

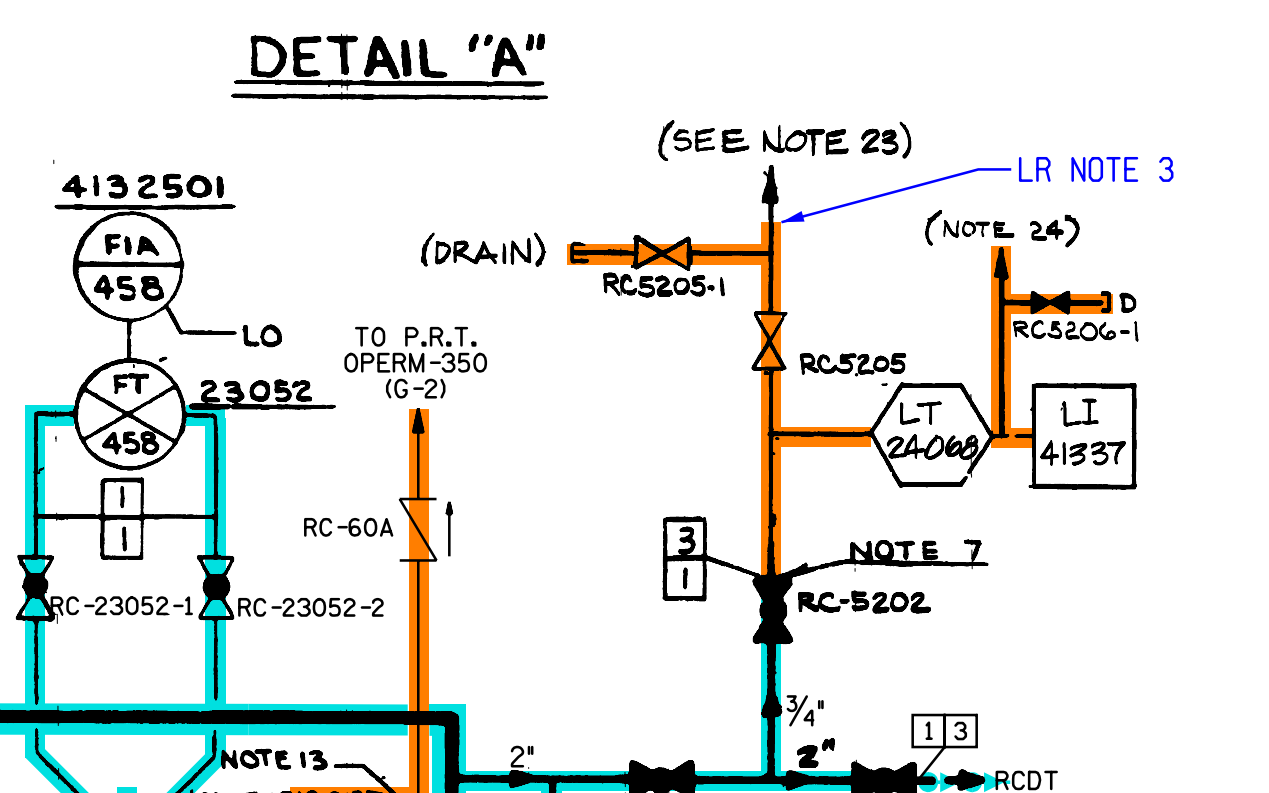
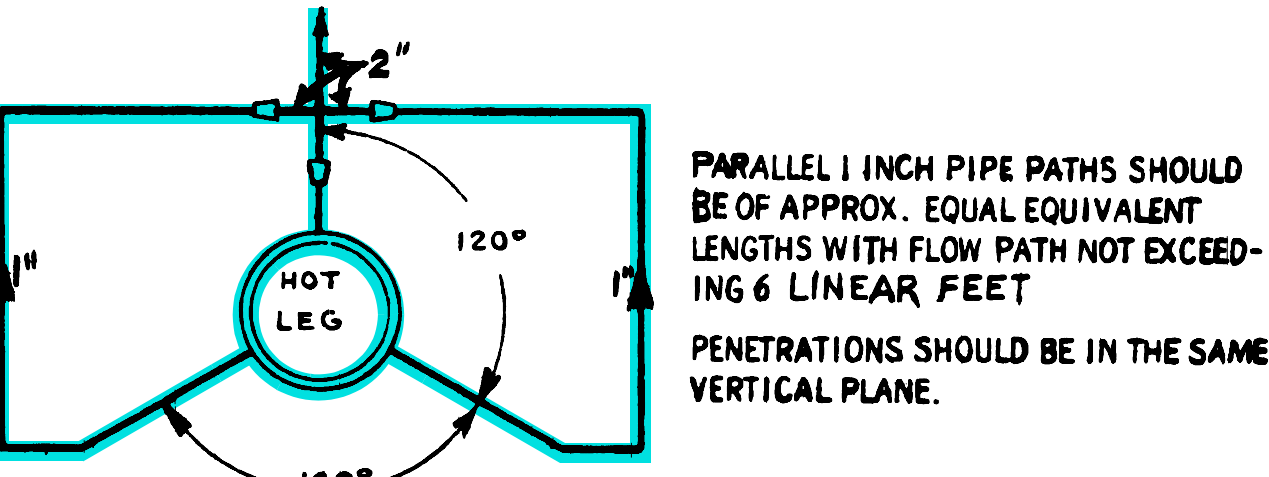
LRXK-100-10

REVISION

REFERENCE DRAWINGS:
 1. LEGEND X-K100-45
 2. LINE LIST X-K100-366

NOTES:

1. 29" INSIDE DIA.
2. 31" INSIDE DIA.
3. 27.5" INSIDE DIA.
4. ALL ITEM NUMBERS INCLUDE PREFIX WPSRC
5. SCHEDULE 140 PIPE
6. 14" SCH. 140 NOZZLE
7. 3/4" PIPE X 3/8" TUBE INSERT
8. ELBOW FLOW METER
9. SPRAY LINE SCOOP
10. RTD MANIFOLD - APPROX. 20 INCHES LONG.
11. LOCATE RTD MANIFOLD ISOLATION VALVES APPROX. 9 INCHES FROM MANIFOLD.
12. LOCATE HOT AND COLD LEG COMMON CONNECTION AS CLOSE AS POSSIBLE TO COMMON PIPE CONNECTION TO PUMP SUCTION LINE.
13. LOCATE CONNECTION ON UPPER 180° OF PIPE CIRCUMFERENCE.
14. ALL BYPASS LOOP PIPING AND THE RTD MANIFOLDS SHALL HAVE REMOVABLE INSULATION UP TO ROOT VALVES.
15. LOCATE ROOT VALVE ABOVE ELEVATION OF REACTOR VESSEL NOZZLES.
16. LENGTH OF HOT LEG 2 INCH PIPE UPSTREAM OF RTD MANIFOLD (A TO B) TO BE A MAXIMUM OF 3 FEET.
17. LENGTH OF COLD LEG 2 INCH PIPE UPSTREAM OF RTD MANIFOLD (C TO D) TO BE A MAXIMUM OF 6 FEET.
18. LOCATE VALVE AND ORIFICE AS NEAR MANIFOLD AS POSSIBLE.
19. Q.A. CODES BY P.S.F.E
20. DELETED
21. LOOP "C" ORIFICES WILL BE INSTALLED IF REQUIRED AFTER TESTING
22. SEE M758 SERIES FOR ADDITIONAL INSTRUMENTS ON MAJOR COMPONENTS.
23. TUBING CONNECTION FOR REFUEL LVL SIGHT GLASS.
24. REFUELING LVL VENT TO PRZR SEE DETAIL "B" LOC. C-6, DPT-2158 AND DPT-2159 VENT TO LT-428 LT-428 VENT TO LT-427
25. CONTROL VALVE MODULATES OPEN/CLOSE TO MAINTAIN DOWNSTREAM PRESSURE OF 5 PSIG
26. RELIEF VALVE WAS INSTALLED FOR NRC GENERIC LETTER 96-06 OVER PRESSURE PROTECTION, REF. DCR 3087
27. FILTER HOUSINGS INSTALLED BACKWARDS PER DCR 1638 FOR COALESCING PURPOSES.
28. VALVE SHALL NOT BE CLOSED WITH PLANT AT HOT SHUTDOWN OR ABOVE WITHOUT AN ENGINEERING EVALUATION OF GL 96-06 IMPACT (REF. CALC. C11483).



- LR NOTES:
1. THE RTDS ON THE RTD BYPASS LINE ARE DIRECT IMMERSION AND ARE THEREFORE PASSIVE.
 2. REPRESENTS PRESSURIZER HEATER SLEEVES AND SHEATHS PRESSURE BOUNDARY.
 3. THE LR BOUNDARY STOPS AT THE END OF THE METAL PIPE, THE ATTACHED TYGON TUBING IS NOT IN SCOPE.

LICENSE RENEWAL DRAWING LEGEND

| | |
|--|---|
| | 36/RC REACTOR COOLANT |
| | 27A/MUP MAKE-UP AND DEMINERALIZED WATER |
| | 32A/WD-L LIQUID WASTE PROCESSING & DISCHARGE |
| | 32B/WD-G GASEOUS WASTE PROCESSING & DISCHARGE |
| | 33/SI SAFETY INJECTION |
| | 34/RHR RESIDUAL HEAT REMOVAL |
| | 35/CVC CHEMICAL AND VOLUME CONTROL |
| | 51/GS MISCELLANEOUS GAS |

DOMINION ENERGY KEWAUNEE, INC.
 KEWAUNEE POWER STATION

LICENSE RENEWAL DRAWING
 REACTOR COOLANT SYSTEM

| | | | |
|----------|-------|-------------|------|
| APPROVED | DRAWN | DATE | REV. |
| REVIEWED | SCALE | LRXK-100-10 | 0 |

HYBRID CADD

REFERENCED PER MASTER DRAWING: OPERXK-100-10 BS

REV 'BS' PER LAST UPDATE