

TE13433
TE13434
TE13435
TE13436
TE13437
TE13438
TE13439
TE13440
TE13441
TE13442

TE13423
TE13424
TE13425
TE13426
TE13427
TE13428
TE13429
TE13430
TE13431
TE13432

MAIN STEAM PIPING (TYPICAL)
FOR CONT. SEE M203
LRM-203 (D-5)

CONTROL LINE TO BLEED CHECK VALVE
HIGH LEVEL TRIP DEVICE
SEE M206 (TYPICAL)

LRM-206 (F-3)

TO BLEED STN. SEE M206

LRM-206 (F-3)

TO BLEED STN. SEE M206
LRM-206 (H-2)

TO BLEED STN. SEE M206
LRM-206 (H-2)

FEEDWATER PUMP SUCTION (CONDENSATE SYSTEM) FOR CONTIN. SEE M206
LRM-206 (H-12)

VENT TO #14 HEATERS
SEE M206
LRM-206 (D-1)

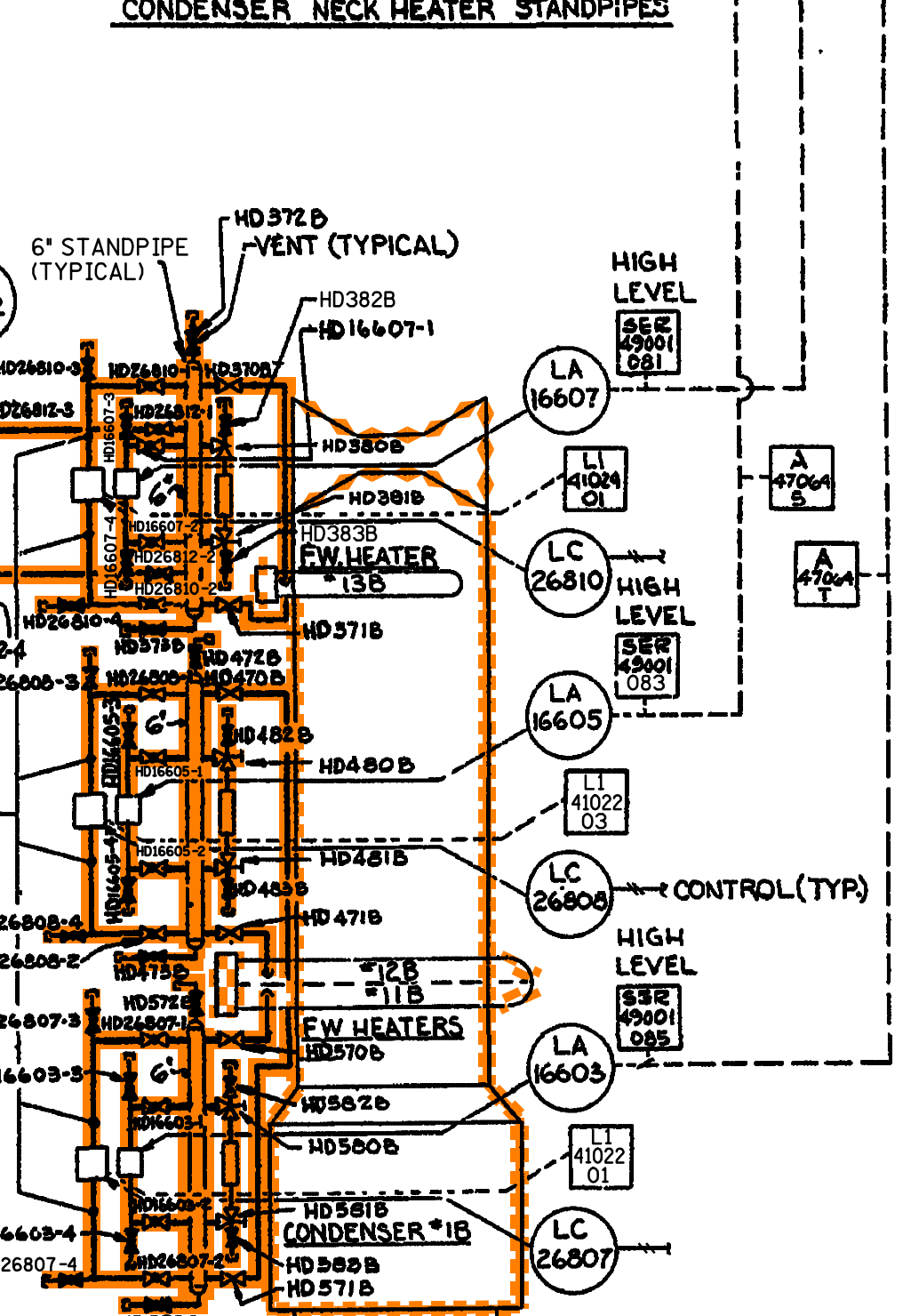
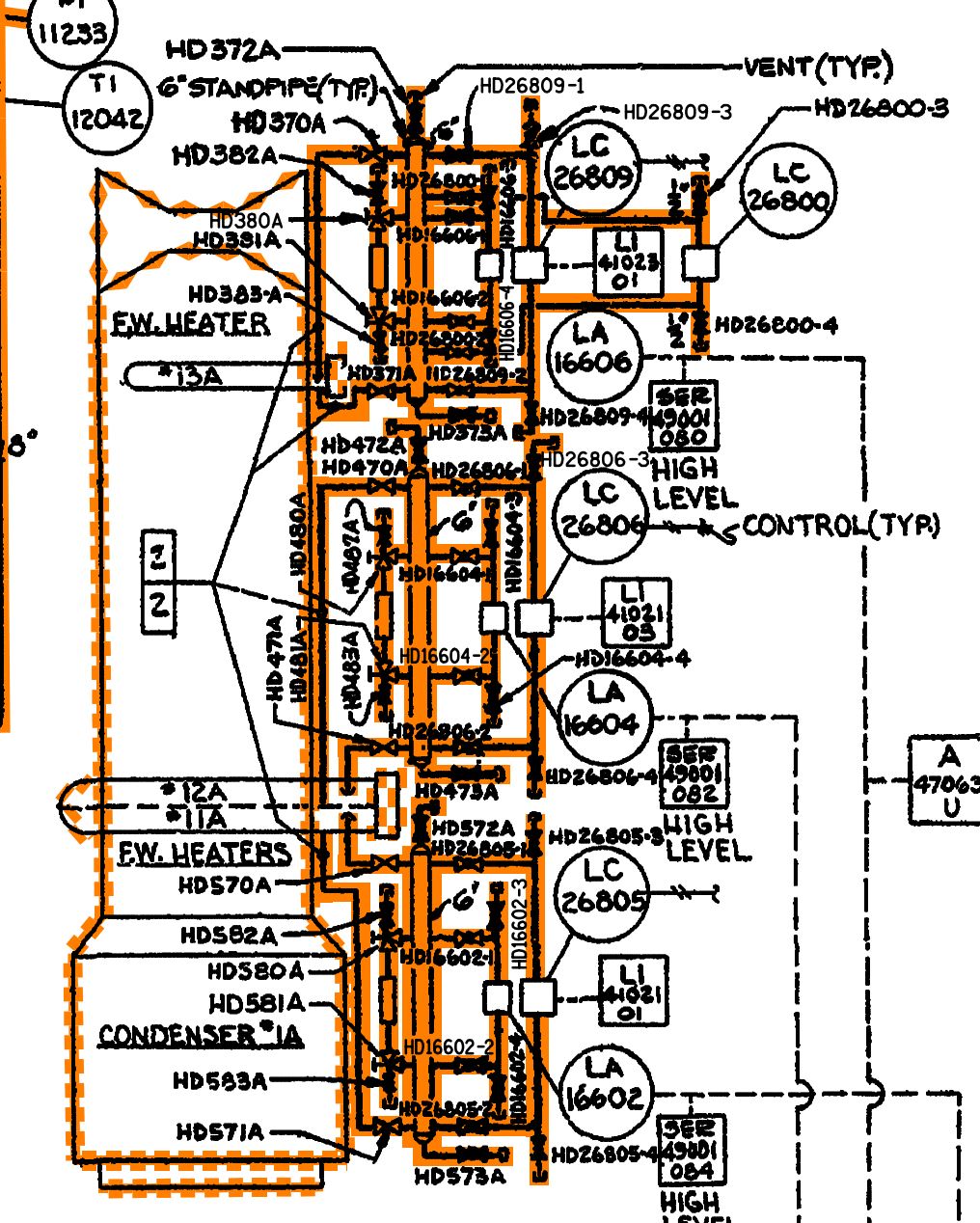
HEATER DRAIN PUMP IA/PUMP IB CUTOFF CONTROL

CONSTANT HEAD CHAMBER
TURBINE CROSSUNDRY PIPE CONTAINS
SEE M211 LRM-211 (G-9)

CONDENSATE FOR SUB-COOLING
SEE M219
LRM-219 (B-10)

1/4" L.P. SENSING LINE FROM HTR. DRAIN PUMP GLAND SEAL PRESS. REG. VALVE SEE M-204
HD625 LRM-204 (G-7)

NOTES:
1) SEE M768 SERIES FOR ADDITIONAL INSTRUMENTS ON MAJOR COMPONENTS.
2) SEE PIPING DRAWINGS FOR PIPE REPLACEMENT, CS TO S3.
3) ROOT VALVE NUMBERS WILL NOT BE SHOWN ON THIS DRAWING. THIS OPERATION VALVE NUMBER CONTAINS THE SYSTEM DESIGNATOR (I.E., SW-11007).



CONDENSER NECK HEATER STANDPIPES

NOTE: ALL ITEMS ARE Q.A. TYPE 2

LR NOTES:
1. THE COMPONENTS LOCATED WITHIN THE CONDENSER ARE EXCLUDED FROM SCOPE RELEVANT TO SPATIAL CONSIDERATION.

LICENSE RENEWAL DRAWING LEGEND

	11/HO HEATER & MOISTURE SEPARATOR DRAIN
	03/CD CONDENSATE
	04/CW CIRCULATING WATER
	05A/FW FEEDWATER
	06/MS MAIN STEAM AND STEAM DUMP
	12/BS BLEED STEAM
	54/TB TURBINE

IN SCOPE FOR LR PER 10CFR 54.4 (a) (2)

IN SCOPE FOR LR PER 10CFR 54.4 (a) (3)

DOMINION ENERGY KEWAUNEE, INC.
KEWAUNEE POWER STATION

LICENSE RENEWAL DRAWING
HEATER & MOISTURE SEPARATOR DRAIN

HYBRID CADD	APPROVED	DRAWN	DATE	REV.
	REVIEWED	SCALE	LRM-207	0
	REFERENCED PER MASTER DRAWING	OPERM-207	AM	