

**INDIANA UNIVERSITY
SOUTH BEND****Indiana University South Bend**1700 Mishawaka Ave. P.O. Box 7111
South Bend, IN 46634**Department of Biological Sciences****FAX COVER SHEET**☐ Urgent ☐ Reply ASAP ☐ Please Comment ☐ Please Review ☐ FYI

Send To: <i>Toye Simmons</i>	From: <i>Andrew Schnabel</i>
Attention: <i>Control #</i>	Office Location: <i>134E Northside</i>
Office Location:	Date: <i>8/16/08</i>
Fax Number: <i>630-515-1078</i>	Fax Number: <i>(574) 520-4482</i>
Phone Number: <i>630-829-9842</i>	Phone Number: <i>(574) 520-4233</i>

Total Pages, Including Cover: _____

COMMENTS:*Dear Ms. Simmons-**Attached is information about close-out
radiation survey. Dr. Gress should be contacting you
separately about accepting the position of RSO for
IU South Bend**Thanks for your attention to this
matter, Andrew Schnabel*

INDIANA UNIVERSITY
SOUTH BEND

August 16, 2008

Materials Licensing Branch
U.S. Nuclear Regulatory Commission, Region III
2443 Warrenville Road, Suite 210
Lisle IL 60532-4352
Attn: Ms. Toye Simmons

DEPARTMENT OF
BIOLOGICAL SCIENCES

Dear Ms. Simmons:

I am writing with reference to proposed amendments to Licence No. 13-26387-01 (Control #317182). You requested that we perform a close-out radiation survey for Room 134C, which we have requested to be decommissioned as a space for use of radioisotopes. The incoming RSO, Dr. Ann Grens, and I collected 17 samples for wipe test analysis on August 14, 2008, from the locations shown on the attached sheet and described below. The samples were tested by Mr. Andrew Welding, who is RSO for the University of Notre Dame. We used their facility, because their scintillation counter undergoes routine and frequent testing and calibration. The instrument used was a Beckman LS6500, and it was calibrated on August 15, 2008, the same day our samples were run.

Here are the descriptions of areas tested and labeled on the diagram of Rm 134C.

- 1 = sink and countertop immediately adjacent to sink
- 2 = cabinet and cabinet doors beneath sink
- 3 = east countertop next to sink
- 4 = floor underneath east countertop next to sink
- 5 = interior surface of hood
- 6 = exterior surfaces of hood
- 7 = floor immediately in front of hood
- 8 = floor immediately in front of east countertop
- 9 = floor in front of sink
- 10 = floor, middle of room, between sink and door
- 11 = floor in front of west countertop
- 12 = floor in northwest corner of room
- 13 = north half of west countertop
- 14 = surface of drawers and cabinet door beneath north half of west countertop
- 15 = south half of west countertop
- 16 = surface of cabinet doors beneath south half of west countertop
- 17 = floor in area where door swings open

Attached also to this message are the results of the tests. As you can see, all readings were very close to background. If you have additional questions regarding these tests, please contact me at aschnabe@iusb.edu or 574-520-4413. If I cannot be reached, please contact Dr. Ann Grens at agrens@iusb.edu or 574-520-4426.

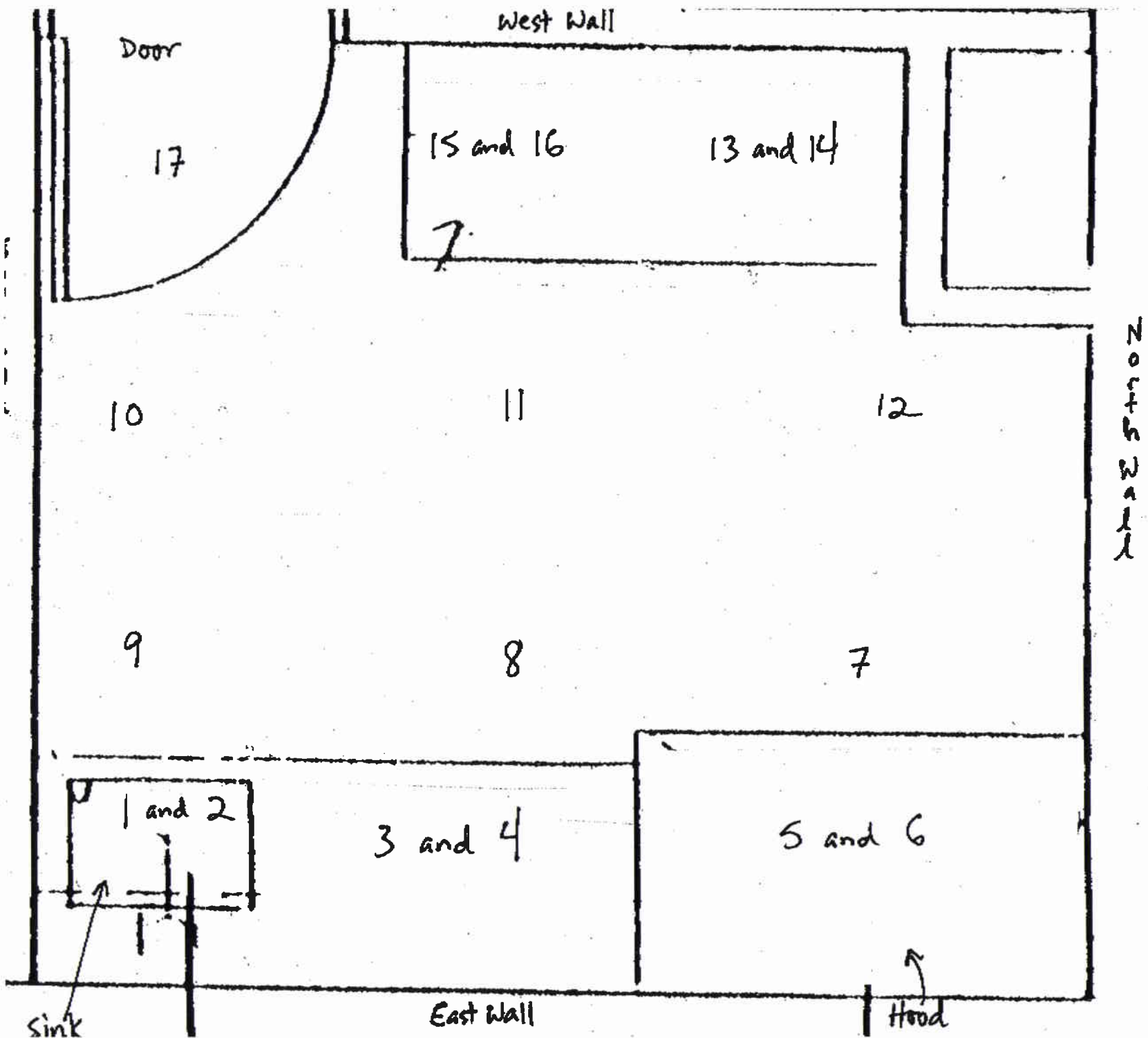
Northside Hall
1700 Mishawaka Avenue
Post Office Box 7111
South Bend, Indiana
46634-7111

Yours sincerely,

A handwritten signature in cursive script that reads "Andrew Schnabel".

Andrew Schnabel, RSO

574-520-4233
Fax: 574-520-5589
<http://www.iusb.edu/~Biol>



Room 134C
Northside Hall
IUSB

Room is
~3.5m NS
x 3m EW

Quench Limits Low: 1.809 High: 314.96

SAN NO	POS	TIME MIN	HD	3H		14C		WIDE		3H CPM	3H EFF-1	LUMEX %	ELAPSED TIME
				CPM	ERROR	CPM	ERROR	CPM	ERROR				
0691 11-1		5.00	63.1	17.80	21.20	14.20	23.74	47.00	13.05	33.54	33.06	2.69	5.50
1 2 11-2		5.00	72.1	13.40	24.43	18.80	20.63	49.00	13.33	26.28	31.00	1.64	11.09
2 3 11-3		5.00	71.1	16.80	21.82	14.80	23.25	48.20	12.88	32.80	31.22	1.17	16.62
3 4 11-4		5.00	68.9	12.60	25.20	12.00	25.82	39.40	14.25	24.35	31.75	0.97	22.18
4 5 11-5		5.00	68.0	11.00	26.97	16.00	22.36	41.60	13.87	21.18	31.94	0.67	27.85
5 6 11-6		5.00	77.0	12.20	25.61	12.60	25.20	36.80	14.74	24.47	49.85	0.47	33.52
6 7 11-7		5.00	77.2	10.40	27.74	14.40	23.57	37.40	14.63	20.89	49.79	0.59	39.19
7 8 11-8		5.00	77.2	9.40	29.17	11.20	26.73	31.60	15.91	18.88	49.80	0.70	44.86
8 9 11-9		5.00	71.9	13.90	24.81	13.00	24.81	38.60	14.40	25.47	31.04	0.53	50.52
9 10 11-10		5.00	72.2	11.60	26.26	11.40	26.49	36.00	14.91	22.76	30.98	0.92	56.20
10 11 11-11		5.00	72.3	10.20	28.01	12.00	23.82	36.80	14.74	20.02	30.95	0.44	61.77
11 12 11-12		5.00	70.3	11.40	26.49	13.40	24.43	35.60	14.99	22.17	31.41	0.37	67.34
12 13 11-13		5.00	72.1	12.00	25.82	13.20	24.62	40.80	14.00	23.54	30.99	0.32	73.02
13 14 11-14		5.00	69.0	10.80	27.22	13.40	24.43	39.60	14.21	20.88	31.72	0.29	78.99
14 15 11-15		5.00	73.1	11.20	26.73	11.00	26.97	34.20	15.29	22.06	30.77	0.36	84.16
15 16 11-16		5.00	76.0	10.00	28.28	13.40	24.43	36.60	14.78	19.97	30.88	0.49	89.73
16 17 11-17		5.00	70.1	11.00	26.97	13.20	24.62	38.60	14.40	21.37	31.47	0.32	95.31
17 18 11-18		5.00	75.1	14.60	23.41	13.80	24.08	41.00	13.97	29.03	30.30	0.33	100.87

Beckman LSC500

8-15-08

Calibrated 8-15-08