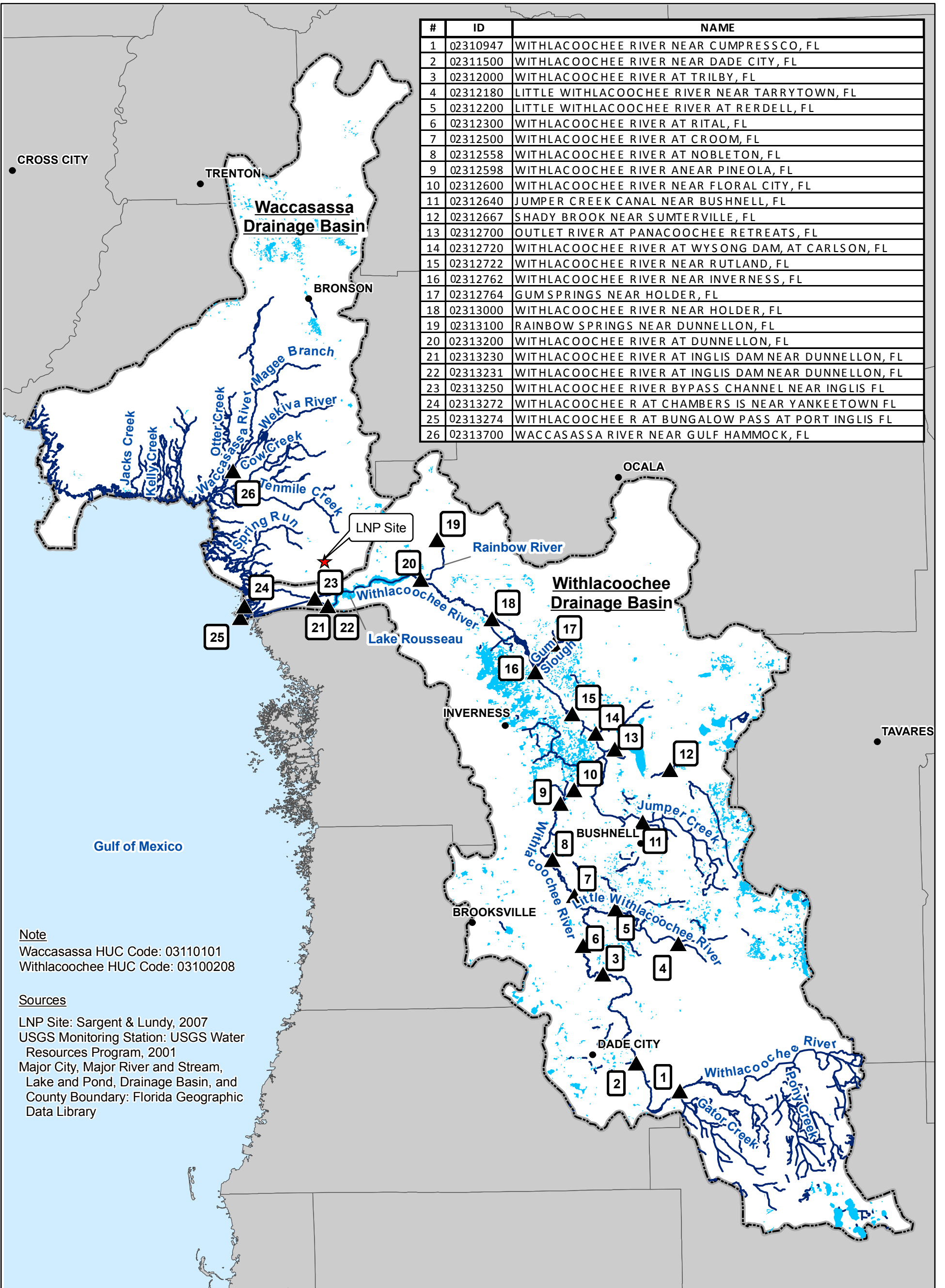


#	ID	NAME
1	02310947	WITHLACOOCHEE RIVER NEAR CUMPRESSCO, FL
2	02311500	WITHLACOOCHEE RIVER NEAR DADE CITY, FL
3	02312000	WITHLACOOCHEE RIVER AT TRILBY, FL
4	02312180	LITTLE WITHLACOOCHEE RIVER NEAR TARRYTOWN, FL
5	02312200	LITTLE WITHLACOOCHEE RIVER AT RERDELL, FL
6	02312300	WITHLACOOCHEE RIVER AT RITAL, FL
7	02312500	WITHLACOOCHEE RIVER AT CROOM, FL
8	02312558	WITHLACOOCHEE RIVER AT NOBLETON, FL
9	02312598	WITHLACOOCHEE RIVER ANEAR PINEOLA, FL
10	02312600	WITHLACOOCHEE RIVER NEAR FLORAL CITY, FL
11	02312640	JUMPER CREEK CANAL NEAR BUSHNELL, FL
12	02312667	SHADY BROOK NEAR SUMTERVILLE, FL
13	02312700	OUTLET RIVER AT PANACOOCHEE RETREATS, FL
14	02312720	WITHLACOOCHEE RIVER AT WYSONG DAM, AT CARLSON, FL
15	02312722	WITHLACOOCHEE RIVER NEAR RUTLAND, FL
16	02312762	WITHLACOOCHEE RIVER NEAR INVERNESS, FL
17	02312764	GUM SPRINGS NEAR HOLDER, FL
18	02313000	WITHLACOOCHEE RIVER NEAR HOLDER, FL
19	02313100	RAINBOW SPRINGS NEAR DUNNELON, FL
20	02313200	WITHLACOOCHEE RIVER AT DUNNELON, FL
21	02313230	WITHLACOOCHEE RIVER AT INGLIS DAM NEAR DUNNELON, FL
22	02313231	WITHLACOOCHEE RIVER AT INGLIS DAM NEAR DUNNELON, FL
23	02313250	WITHLACOOCHEE RIVER BYPASS CHANNEL NEAR INGLIS FL
24	02313272	WITHLACOOCHEE R AT CHAMBERS IS NEAR YANKEETOWN FL
25	02313274	WITHLACOOCHEE R AT BUNGALOW PASS AT PORT INGLIS FL
26	02313700	WACCASASSA RIVER NEAR GULF HAMMOCK, FL

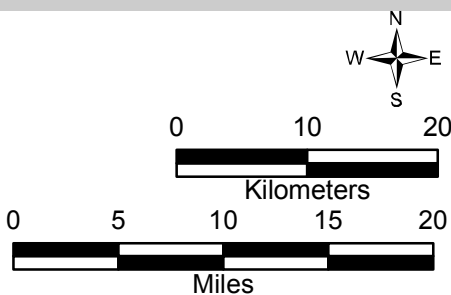


Note
Waccasassa HUC Code: 03110101
Withlacoochee HUC Code: 03100208

Sources
LNP Site: Sargent & Lundy, 2007
USGS Monitoring Station: USGS Water Resources Program, 2001
Major City, Major River and Stream, Lake and Pond, Drainage Basin, and County Boundary: Florida Geographic Data Library

LEGEND

- ★ LNP Site
- ▲ USGS Monitoring Station
- Major City
- Major River and Stream
- Lake and Pond
- ▭ Drainage Basin
- ▭ County Boundary



Progress Energy Florida

**Levy Nuclear Plant
Units 1 and 2
Part 3, Environmental Report**

USGS Monitoring Stations within the
Waccasassa and Withlacoochee
Drainage Basins

FIGURE 2.3-6

Rev 0