

LEGEND

- Substations
- Interstate
- US road
- State road
- Toll road
- County road
- Railroad
- Corridor boundary
- Proposed substation areas
- County boundary

Note

1. See Figure 2.2.2-20 for Future Land Use legend

Sources

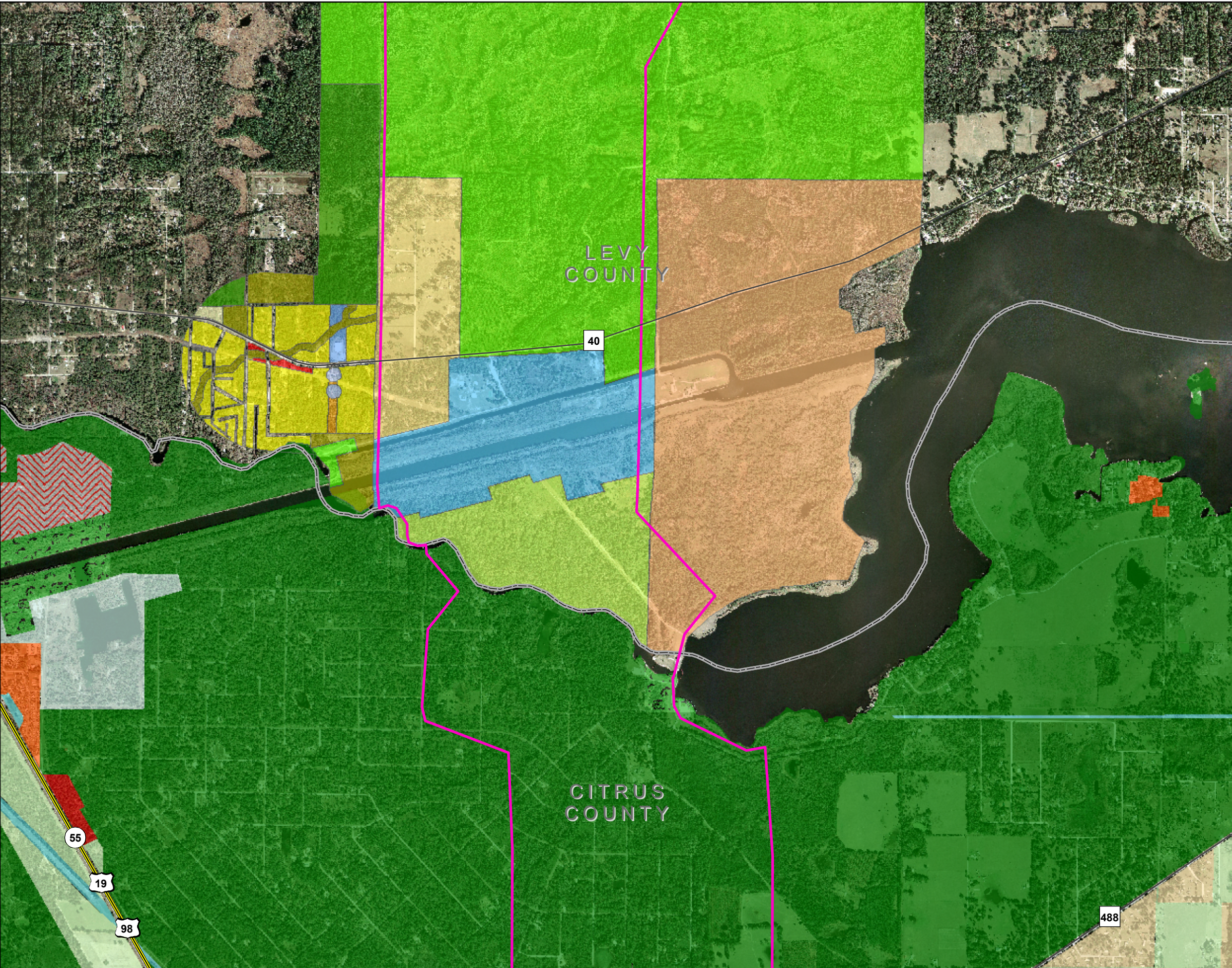
1. County boundaries - US Census Bureau
2. Major roads - Florida Department of Transportation April 2006
3. Railroads - Florida Department of Environmental Protection 1999
4. Future Land use - Current data from County and municipality planning departments 2007 and 2008
5. Aerial photography - Aerials Express January 2007
6. Proposed Levy Nuclear Plant - Progress Energy 2008
7. Corridor and proposed substation locations - Golder Associates and Progress Energy 2008

00.51

Kilometers

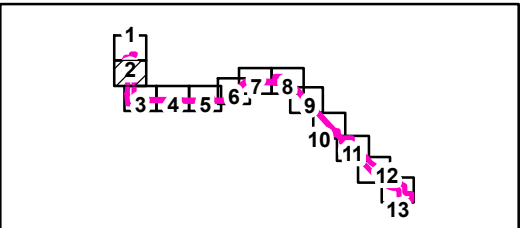
02,0004,000

Feet



LEGEND

- Substations
- Interstate
- US road
- State road
- Toll road
- County road
- Railroad
- Corridor boundary
- Proposed substation areas
- County boundary

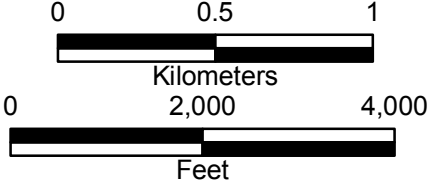


Note

1. See Figure 2.2.2-20 for Future Land Use legend

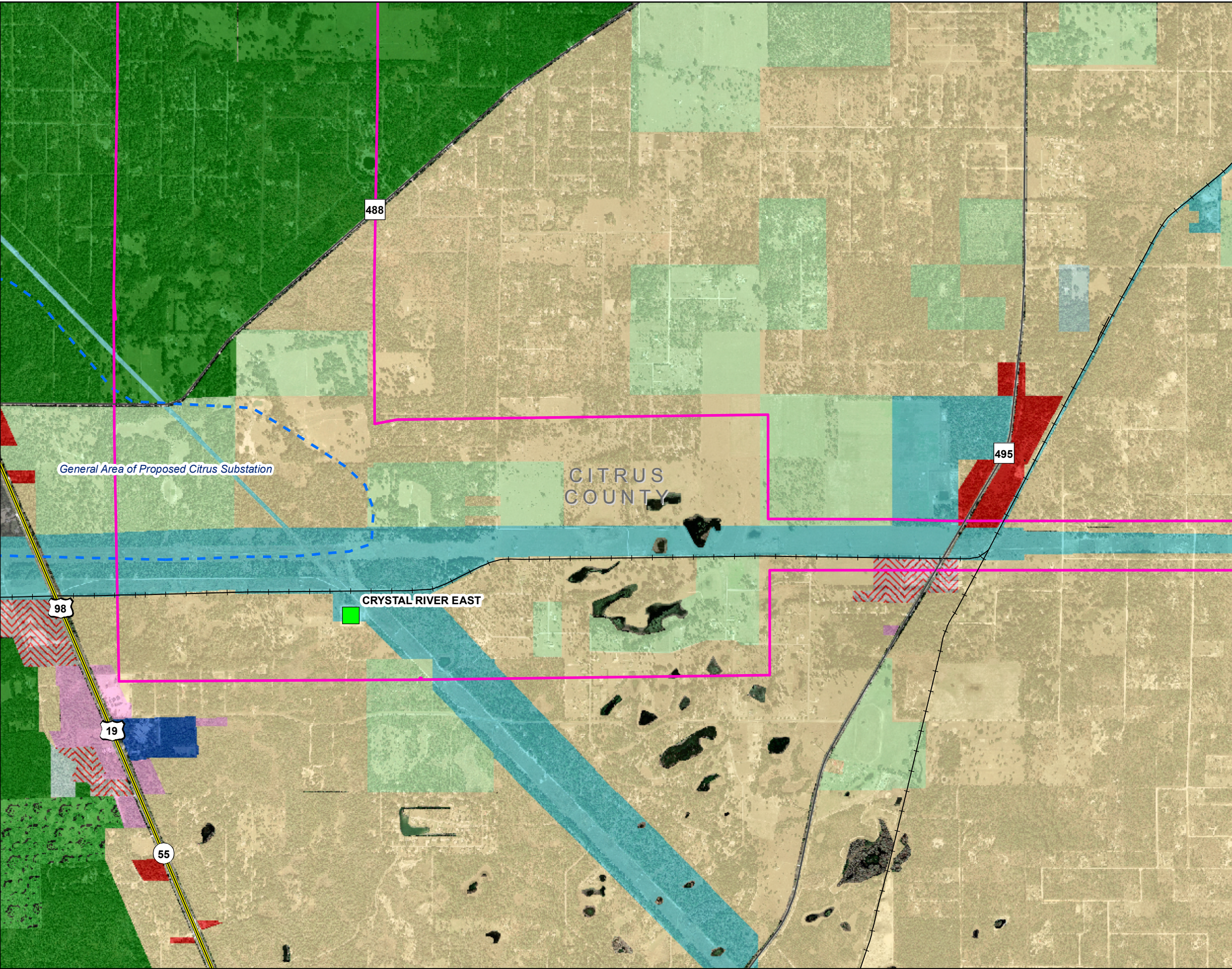
Sources

- County boundaries - US Census Bureau
- Major roads - Florida Department of Transportation April 2006
- Railroads - Florida Department of Environmental Protection 1999
- Future Land use - Current data from County and municipality planning departments 2007 and 2008
- Aerial photography - Aerials Express January 2007
- Proposed Levy Nuclear Plant - Progress Energy 2008
- Corridor and proposed substation locations - Golder Associates and Progress Energy 2008



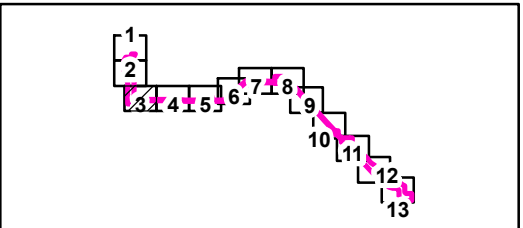
Progress Energy Florida

**Levy Nuclear Plant
Units 1 and 2
Part 3, Environmental Report**



LEGEND

- Substations
- Interstate
- US road
- State road
- Toll road
- County road
- Railroad
- Corridor boundary
- Proposed substation areas
- County boundary

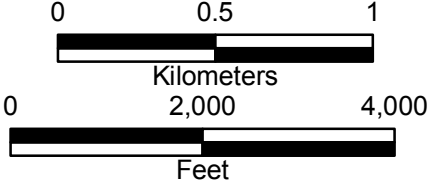


Note

1. See Figure 2.2.2-20 for Future Land Use legend

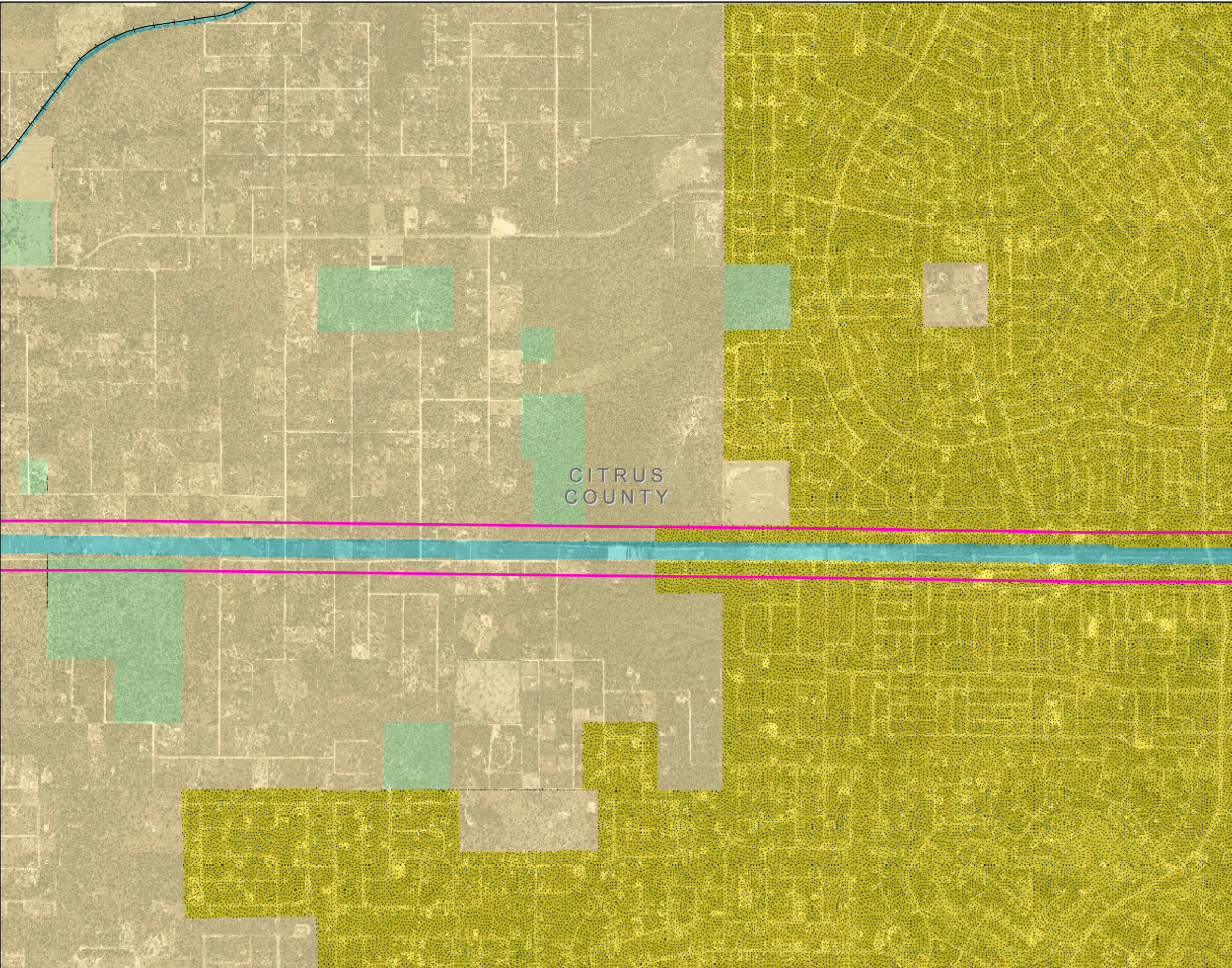
Sources

- County boundaries - US Census Bureau
- Major roads - Florida Department of Transportation April 2006
- Railroads - Florida Department of Environmental Protection 1999
- Future Land use - Current data from County and municipality planning departments 2007 and 2008
- Aerial photography - Aerials Express January 2007
- Proposed Levy Nuclear Plant - Progress Energy 2008
- Corridor and proposed substation locations - Golder Associates and Progress Energy 2008



Progress Energy Florida

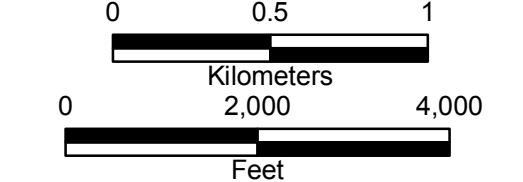
**Levy Nuclear Plant
Units 1 and 2
Part 3, Environmental Report**



LEGEND

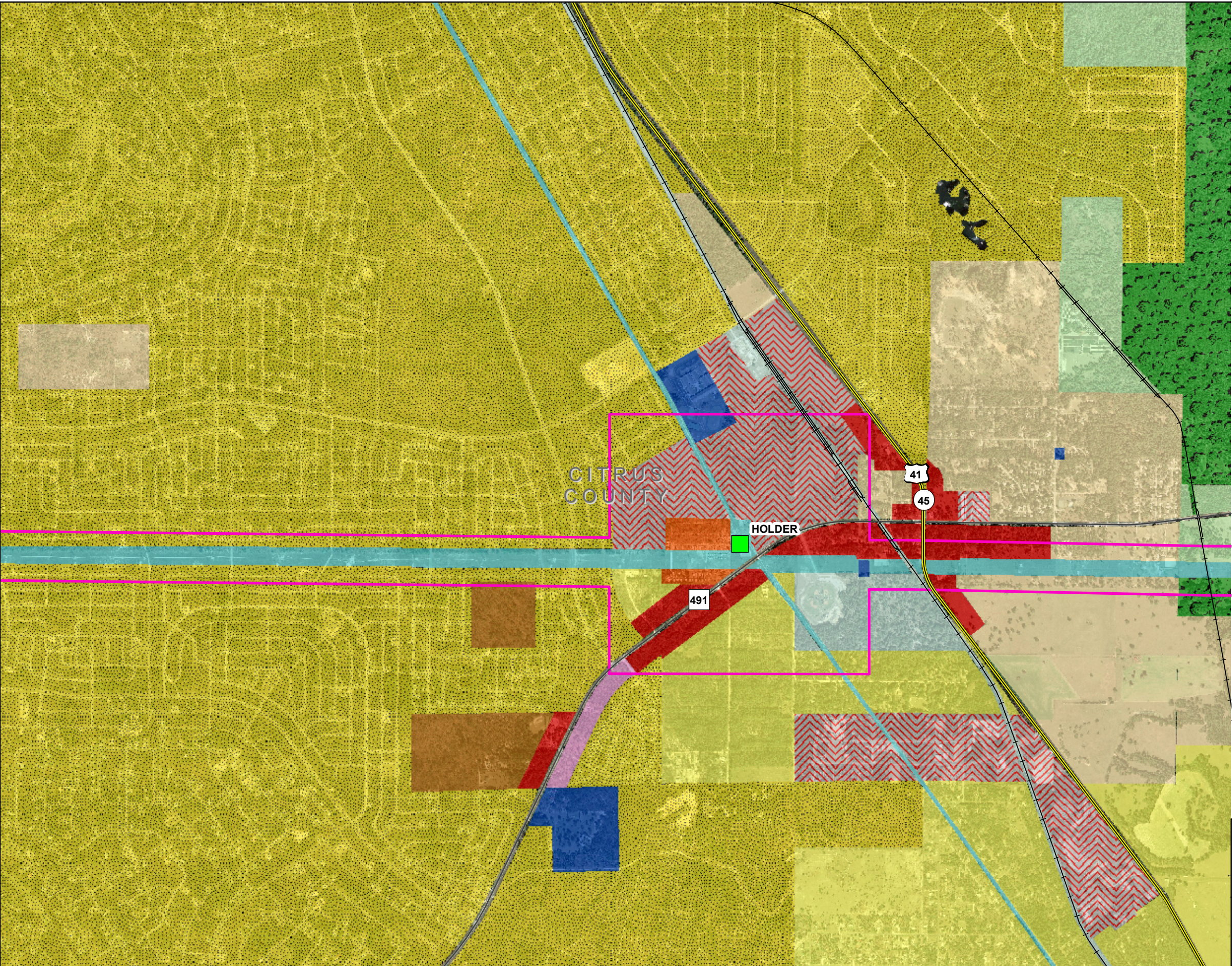
- Substations
- Interstate
- US road
- State road
- Toll road
- County road
- Railroad
- Corridor boundary
- Proposed substation areas
- County boundary

- Note**
- See Figure 2.2.2-20 for Future Land Use legend
- Sources**
- County boundaries - US Census Bureau
 - Major roads - Florida Department of Transportation April 2006
 - Railroads - Florida Department of Environmental Protection 1999
 - Future Land use - Current data from County and municipality planning departments 2007 and 2008
 - Aerial photography - Aerials Express January 2007
 - Proposed Levy Nuclear Plant - Progress Energy 2008
 - Corridor and proposed substation locations - Golder Associates and Progress Energy 2008



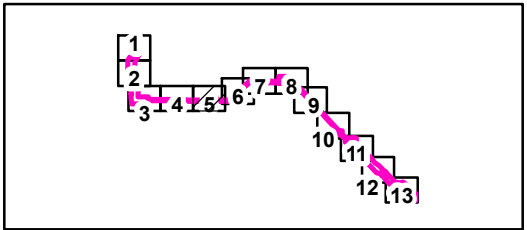
Progress Energy Florida

**Levy Nuclear Plant
Units 1 and 2
Part 3, Environmental Report**

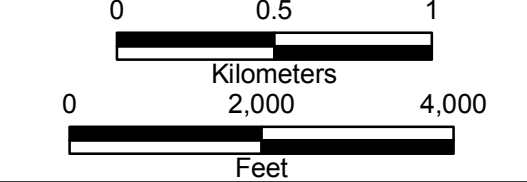


LEGEND

- Substations
- Interstate
- US road
- State road
- Toll road
- County road
- Railroad
- Corridor boundary
- Proposed substation areas
- County boundary

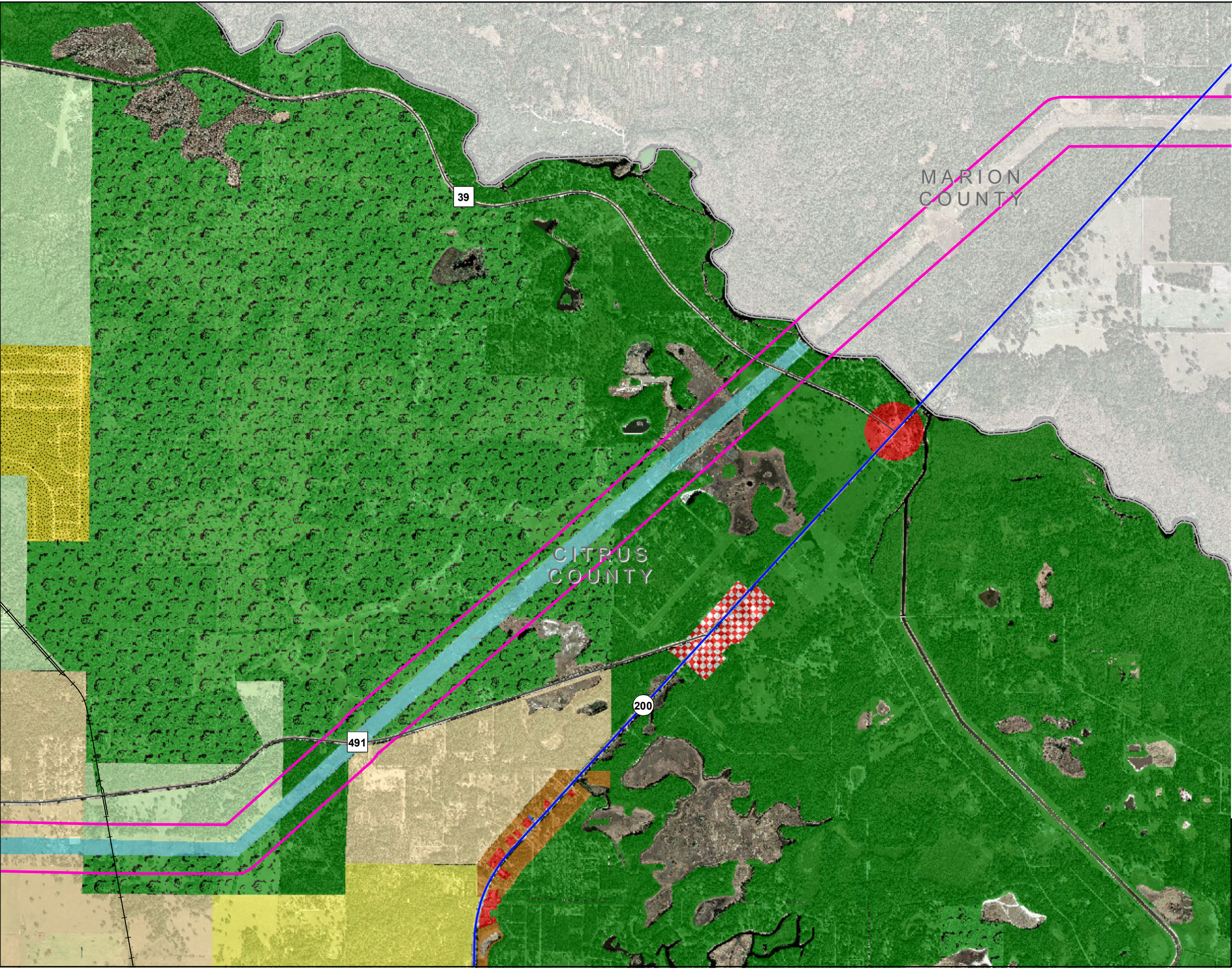


- Note**
1. See Figure 2.2.2-20 for Future Land Use legend
- Sources**
1. County boundaries - US Census Bureau
 2. Major roads - Florida Department of Transportation April 2006
 3. Railroads - Florida Department of Environmental Protection 1999
 4. Future Land use - Current data from County and municipality planning departments 2007 and 2008
 5. Aerial photography - Aerials Express January 2007
 6. Proposed Levy Nuclear Plant - Progress Energy 2008
 7. Corridor and proposed substation locations - Golder Associates and Progress Energy 2008



Progress Energy Florida

**Levy Nuclear Plant
Units 1 and 2
Part 3, Environmental Report**



LEGEND

- Substations
- Interstate
- US road
- State road
- Toll road
- County road
- Railroad
- Corridor boundary
- Proposed substation areas
- County boundary

Note

1. See Figure 2.2.2-20 for Future Land Use legend

Sources

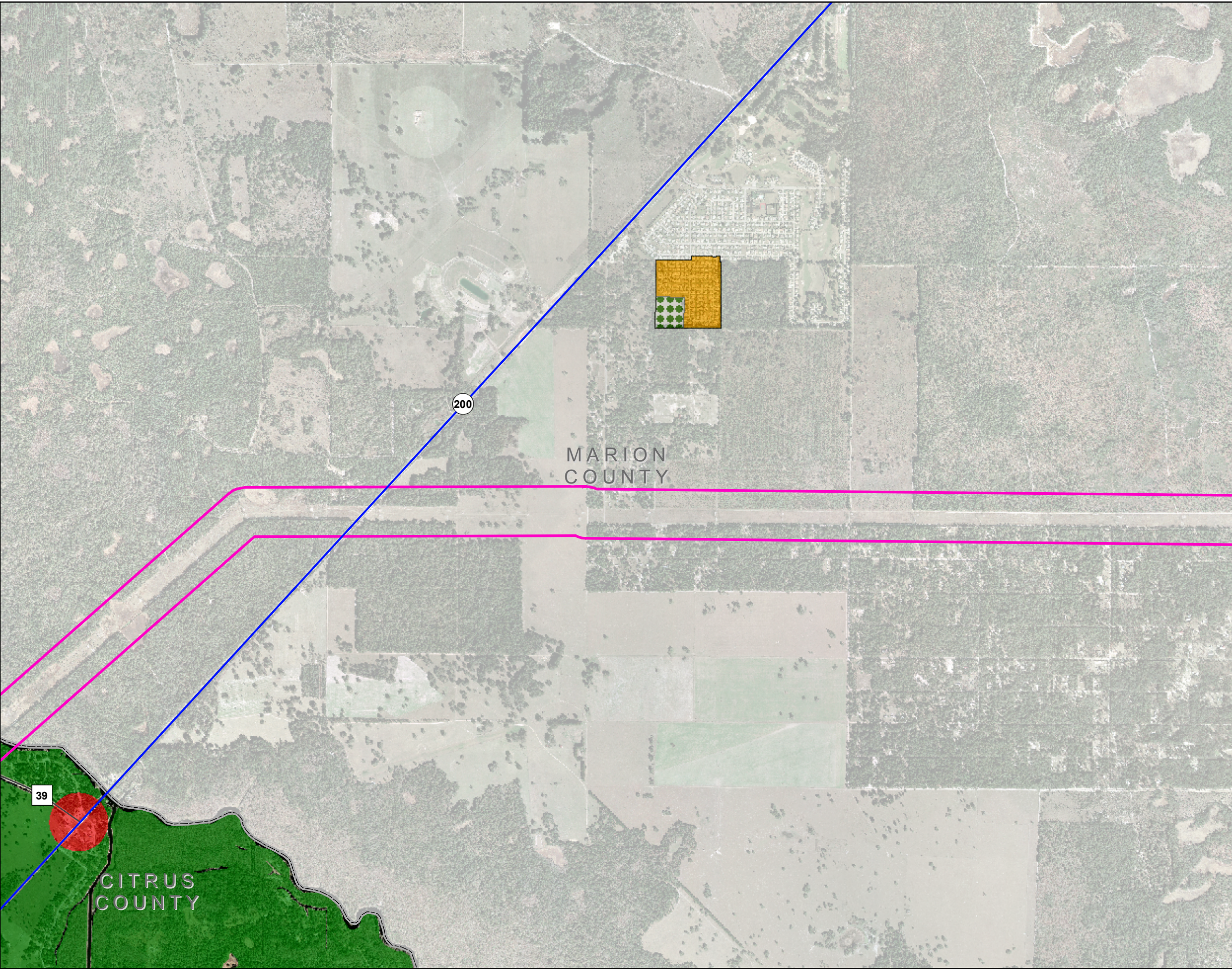
1. County boundaries - US Census Bureau
2. Major roads - Florida Department of Transportation April 2006
3. Railroads - Florida Department of Environmental Protection 1999
4. Future Land use - Current data from County and municipality planning departments 2007 and 2008
5. Aerial photography - Aerials Express January 2007
6. Proposed Levy Nuclear Plant - Progress Energy 2008
7. Corridor and proposed substation locations - Golder Associates and Progress Energy 2008

00.51

Kilometers

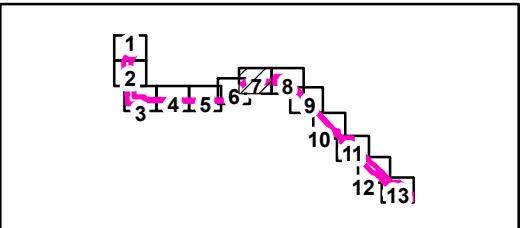
02,0004,000

Feet



LEGEND

- Substations
- Interstate
- US road
- State road
- Toll road
- County road
- Railroad
- Corridor boundary
- Proposed substation areas
- County boundary

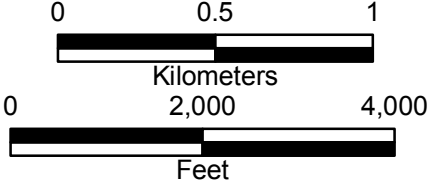


Note

1. See Figure 2.2.2-20 for Future Land Use legend

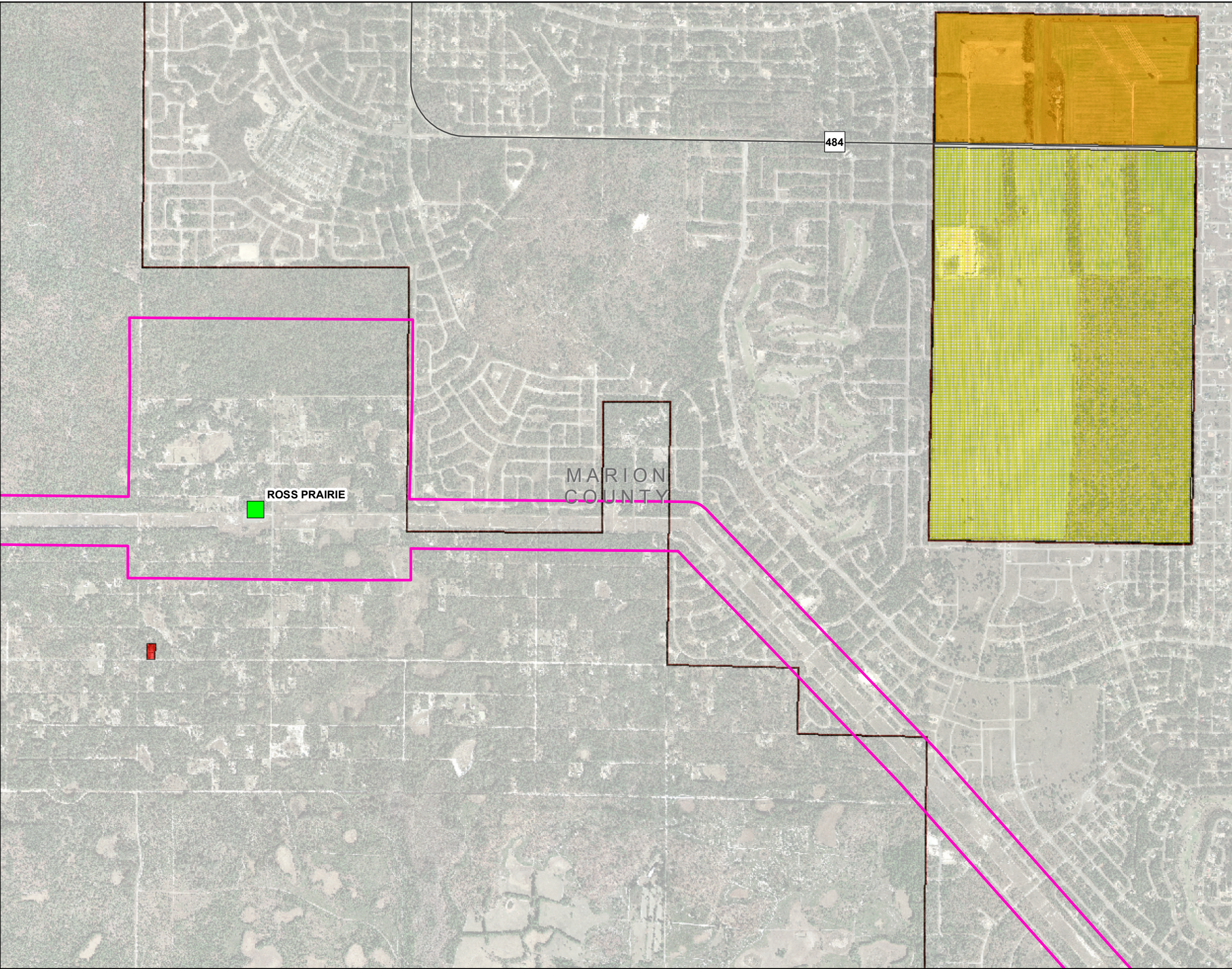
Sources

1. County boundaries - US Census Bureau
2. Major roads - Florida Department of Transportation April 2006
3. Railroads - Florida Department of Environmental Protection 1999
4. Future Land use - Current data from County and municipality planning departments 2007 and 2008
5. Aerial photography - Aerials Express January 2007
6. Proposed Levy Nuclear Plant - Progress Energy 2008
7. Corridor and proposed substation locations - Golder Associates and Progress Energy 2008

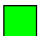











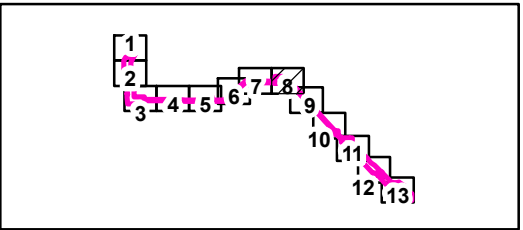
Progress Energy Florida

**Levy Nuclear Plant
Units 1 and 2
Part 3, Environmental Report**



LEGEND

-  Substations
-  Interstate
-  US road
-  State road
-  Toll road
-  County road
-  Railroad
-  Corridor boundary
-  Proposed substation areas
-  County boundary

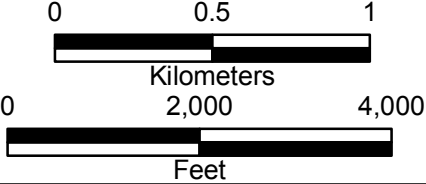


Note

1. See Figure 2.2.2-20 for Future Land Use legend

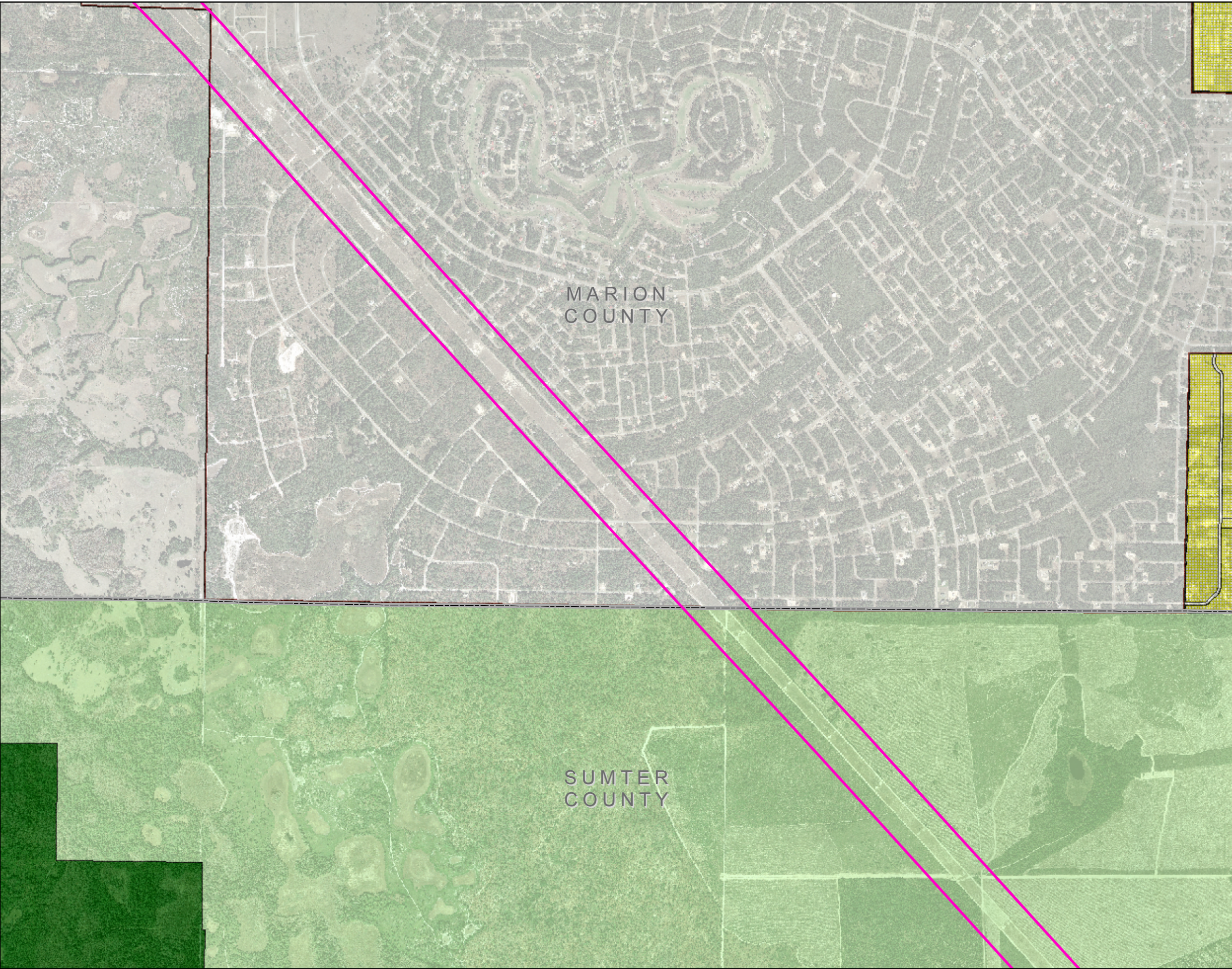
Sources

1. County boundaries - US Census Bureau
2. Major roads - Florida Department of Transportation April 2006
3. Railroads - Florida Department of Environmental Protection 1999
4. Future Land use - Current data from County and municipality planning departments 2007 and 2008
5. Aerial photography - Aerials Express January 2007
6. Proposed Levy Nuclear Plant - Progress Energy 2008
7. Corridor and proposed substation locations - Golder Associates and Progress Energy 2008



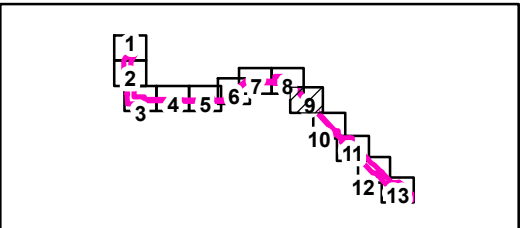
Progress Energy Florida

**Levy Nuclear Plant
Units 1 and 2
Part 3, Environmental Report**



LEGEND

- Substations
- Interstate
- US road
- State road
- Toll road
- County road
- Railroad
- Corridor boundary
- Proposed substation areas
- County boundary

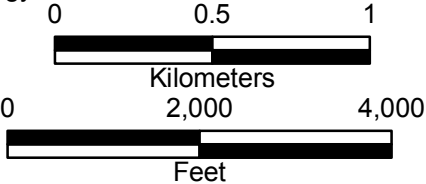


Note

1. See Figure 2.2.2-20 for Future Land Use legend

Sources

- County boundaries - US Census Bureau
- Major roads - Florida Department of Transportation April 2006
- Railroads - Florida Department of Environmental Protection 1999
- Future Land use - Current data from County and municipality planning departments 2007 and 2008
- Aerial photography - Aerials Express January 2007
- Proposed Levy Nuclear Plant - Progress Energy 2008
- Corridor and proposed substation locations - Golder Associates and Progress Energy 2008

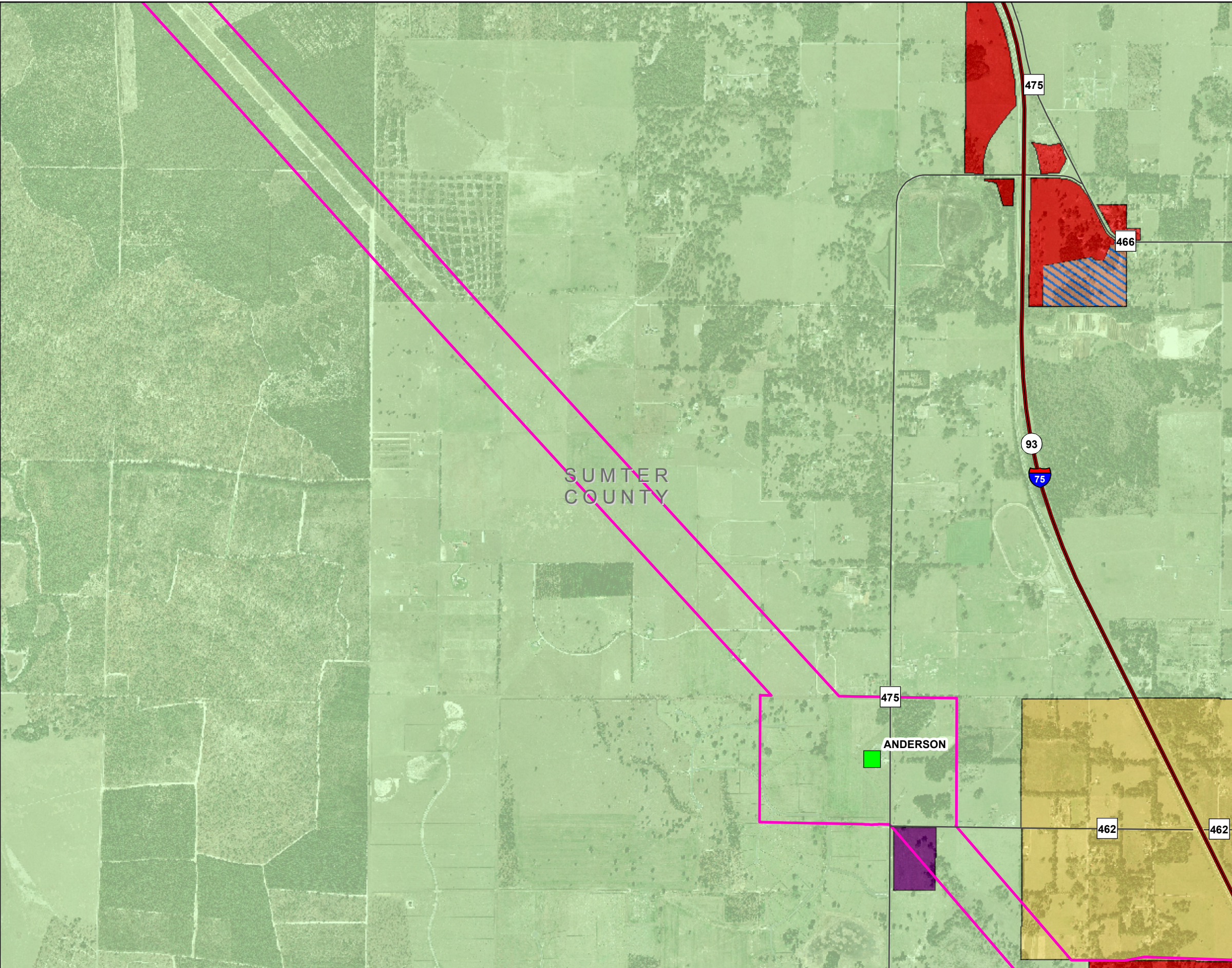


Progress Energy Florida

**Levy Nuclear Plant
Units 1 and 2
Part 3, Environmental Report**

Future Land Use
LNP to Proposed Central Florida South Substation
FIGURE 2.2-25
9 OF 13

Rev 0



LEGEND

- Substations
- Interstate
- US road
- State road
- Toll road
- County road
- Railroad
- Corridor boundary
- Proposed substation areas
- County boundary

Note

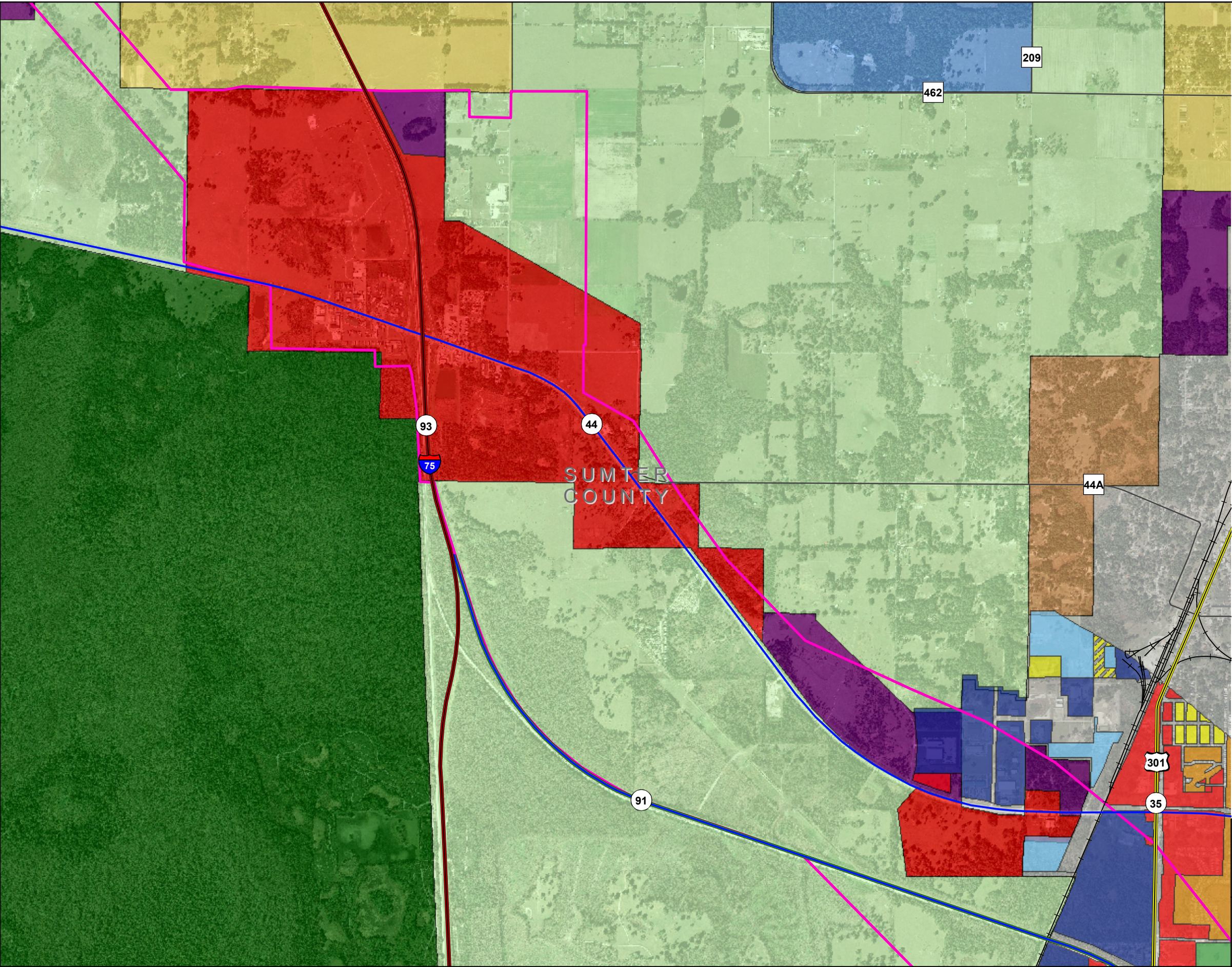
1. See Figure 2.2.2-20 for Future Land Use legend

Sources

1. County boundaries - US Census Bureau
2. Major roads - Florida Department of Transportation April 2006
3. Railroads - Florida Department of Environmental Protection 1999
4. Future Land use - Current data from County and municipality planning departments 2007 and 2008
5. Aerial photography - Aerials Express January 2007
6. Proposed Levy Nuclear Plant - Progress Energy 2008
7. Corridor and proposed substation locations - Golder Associates and Progress Energy 2008

Kilometers

Feet



LEGEND

- Substations
- Interstate
- US road
- State road
- Toll road
- County road
- Railroad
- Corridor boundary
- Proposed substation areas
- County boundary

Note

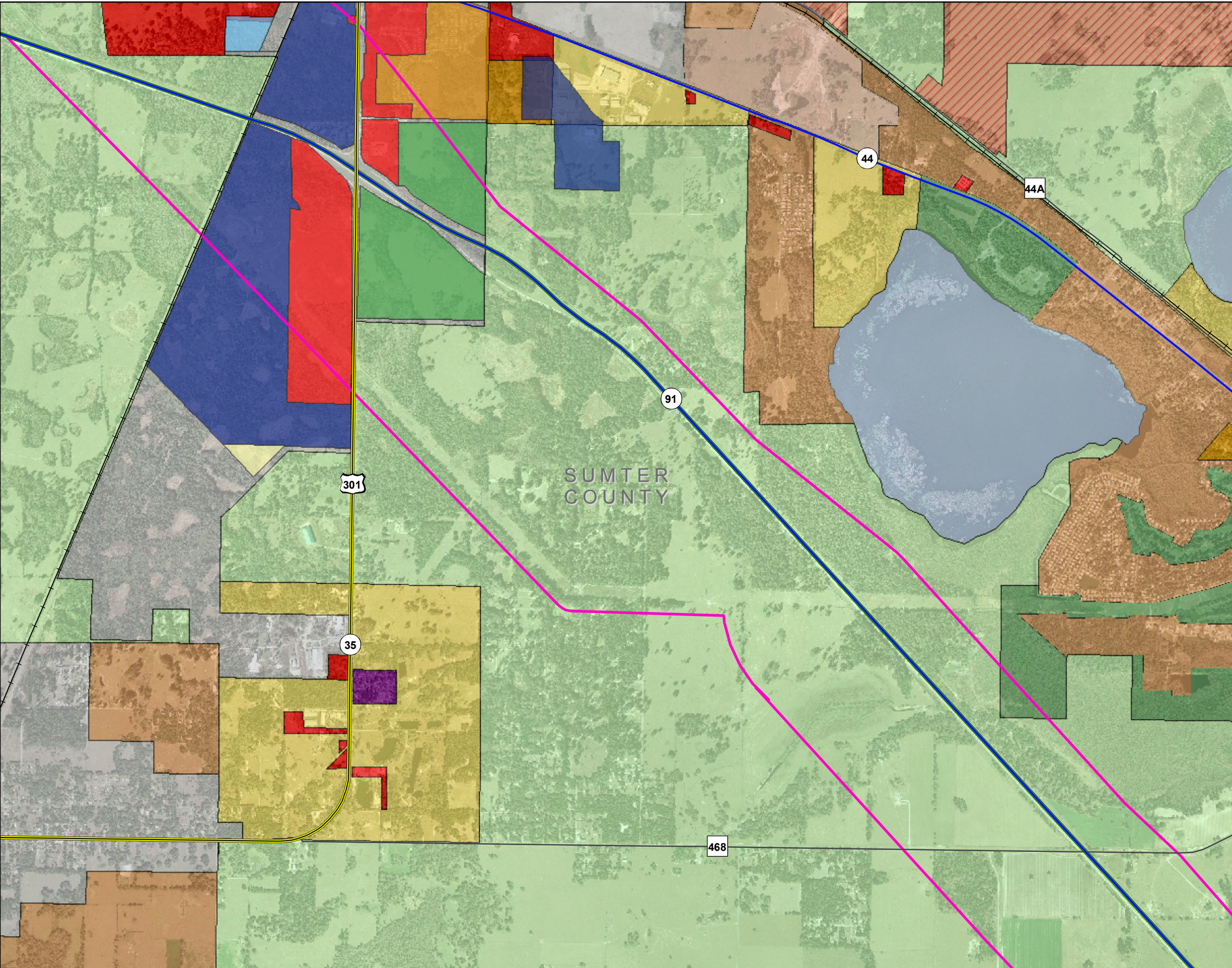
1. See Figure 2.2.2-20 for Future Land Use legend

Sources

1. County boundaries - US Census Bureau
2. Major roads - Florida Department of Transportation April 2006
3. Railroads - Florida Department of Environmental Protection 1999
4. Future Land use - Current data from County and municipality planning departments 2007 and 2008
5. Aerial photography - Aerials Express January 2007
6. Proposed Levy Nuclear Plant - Progress Energy 2008
7. Corridor and proposed substation locations - Golder Associates and Progress Energy 2008

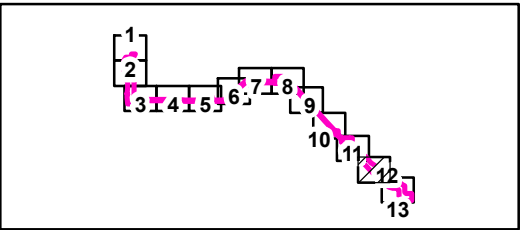
Kilometers

Feet



LEGEND

- Substations
- Interstate
- US road
- State road
- Toll road
- County road
- Railroad
- Corridor boundary
- Proposed substation areas
- County boundary

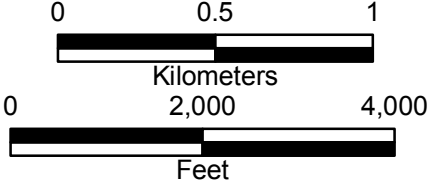


Note

1. See Figure 2.2.2-20 for Future Land Use legend

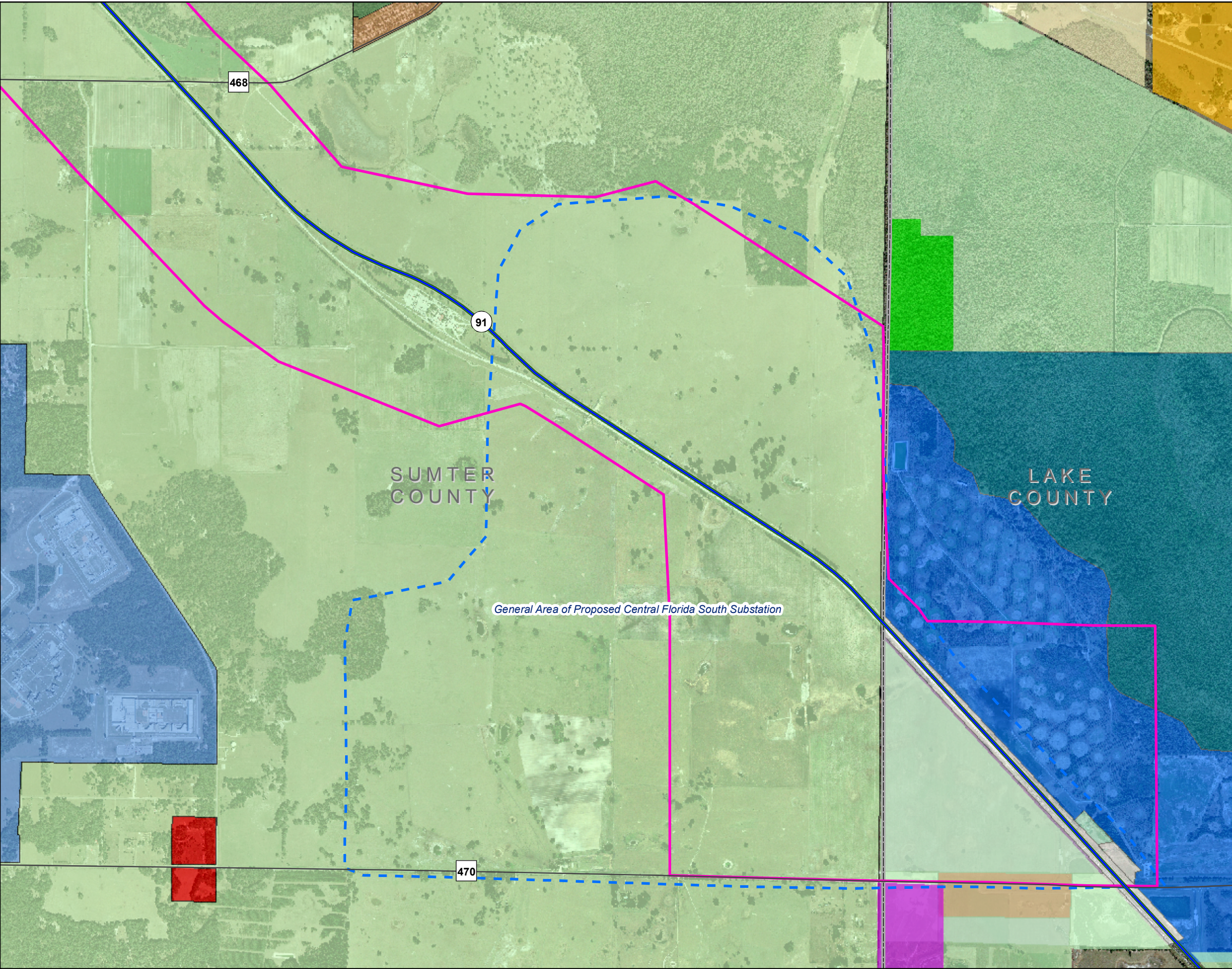
Sources

- 1. County boundaries - US Census Bureau
- 2. Major roads - Florida Department of Transportation April 2006
- 3. Railroads - Florida Department of Environmental Protection 1999
- 4. Future Land use - Current data from County and municipality planning departments 2007 and 2008
- 5. Aerial photography - Aerials Express January 2007
- 6. Proposed Levy Nuclear Plant - Progress Energy 2008
- 7. Corridor and proposed substation locations - Golder Associates and Progress Energy 2008



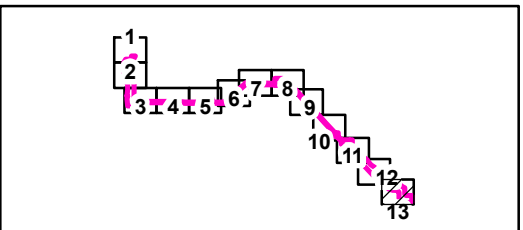
Progress Energy Florida

Levy Nuclear Plant
Units 1 and 2
Part 3, Environmental Report



LEGEND

- Substations
- Interstate
- US road
- State road
- Toll road
- County road
- Railroad
- Corridor boundary
- Proposed substation areas
- County boundary

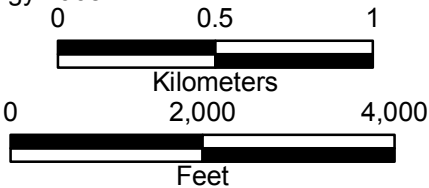


Note

1. See Figure 2.2.2-20 for Future Land Use legend

Sources

- County boundaries - US Census Bureau
- Major roads - Florida Department of Transportation April 2006
- Railroads - Florida Department of Environmental Protection 1999
- Future Land use - Current data from County and municipality planning departments 2007 and 2008
- Aerial photography - Aerials Express January 2007
- Proposed Levy Nuclear Plant - Progress Energy 2008
- Corridor and proposed substation locations - Golder Associates and Progress Energy 2008



Progress Energy Florida

**Levy Nuclear Plant
Units 1 and 2
Part 3, Environmental Report**