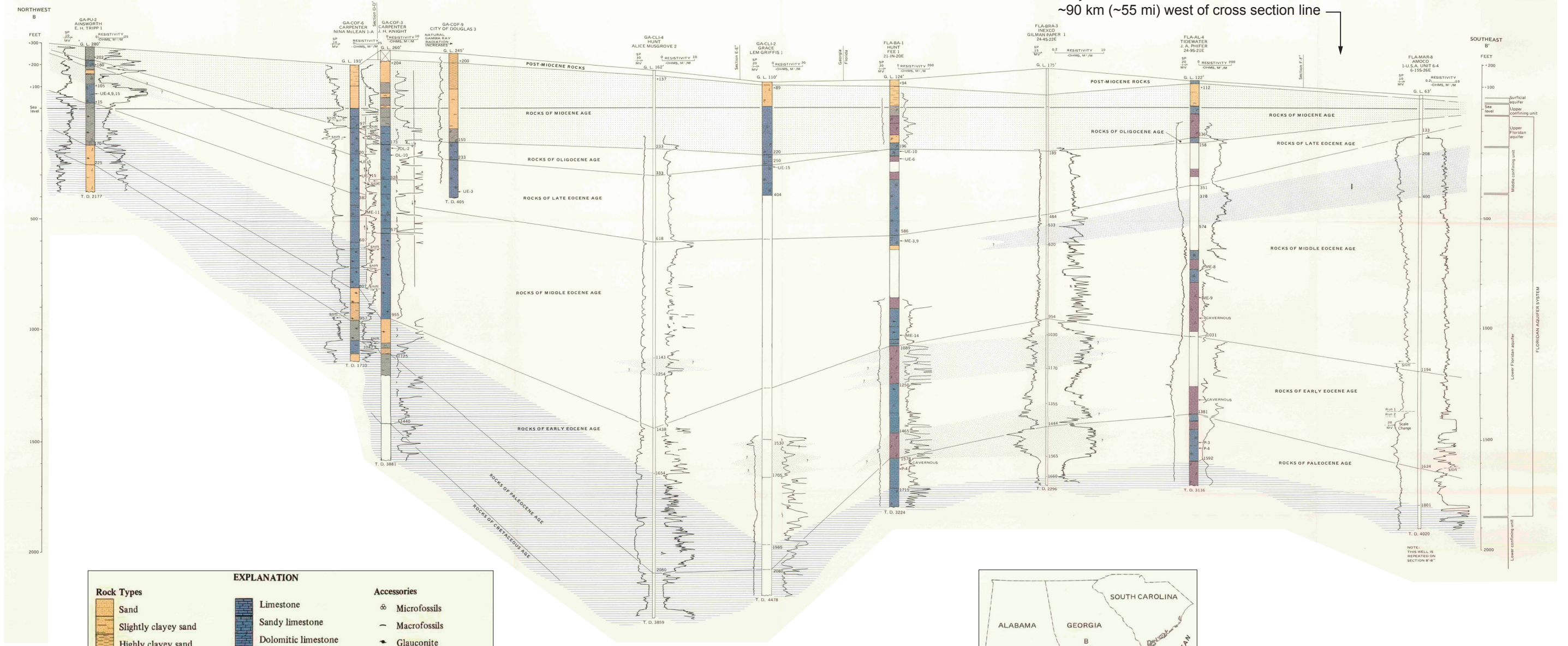


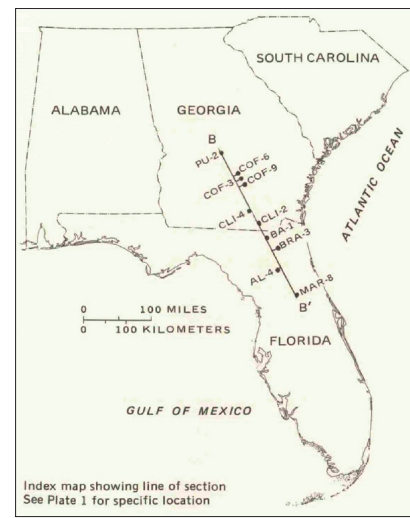
UNITED STATES DEPARTMENT OF THE INTERIOR
GEOLOGICAL SURVEY

PROFESSIONAL PAPER 1403-B
PLATE 16

Projected location of LNP site:
~90 km (~55 mi) west of cross section line



EXPLANATION		
Rock Types	Lithology	Accessories
Sand	Limestone	⊕ Microfossils
Slightly clayey sand	Sandy limestone	- Macrofossils
Highly clayey sand	Dolomitic limestone	⚡ Glauconite
Calcareous silt	Dolomite	ρ Phosphate
Clay	Sandy dolomite	⌒ Carbonaceous material
Sandy clay	No sample	~ Mica
		△ Chert
		/ Intergranular gypsum
Hydrologic Units		UE-3 Index fossil occurrence (see table 1)
High-permeability units are unpatterned		
Upper confining unit of the Floridan aquifer system		
Confining unit of subregional extent within the Floridan aquifer system (Roman numerals keyed to text)		
Local confining unit within the Floridan aquifer system		
Lower confining unit of the Floridan aquifer system		



0 10 20 miles
0 10 20 kilometers
Vertical scale greatly exaggerated

Source: Miller (1986)

Progress Energy Florida
**Levy Nuclear Plant
Units 1 and 2**
Part 2, Final Safety Analysis Report
Geohydrologic Cross Section B-B' from
Pulaski County, Georgia to
Marion County, Florida
Figure 2.5.1-215