

July 22, 2008

Emily Rusch, Environmental Review Assistant
Wisconsin Department of Natural Resources
Bureau of Endangered Species
PO Box 7921
Madison, WI 53707

SUBJECT: REQUEST FOR LIST OF STATE-PROTECTED SPECIES WITHIN THE AREA
UNDER EVALUATION FOR THE PRAIRIE ISLAND NUCLEAR GENERATING
PLANT, UNITS 1 AND 2, LICENSE RENEWAL APPLICATION REVIEW

Dear Ms. Rusch:

The U.S. Nuclear Regulatory Commission (NRC or the staff) is reviewing an application submitted by Nuclear Management Company, LLC (NMC), for the renewal of the operating licenses for Prairie Island Nuclear Generating Plant, Units 1 and 2 (PINGP). PINGP is located near Red Wing, Minnesota, approximately 39 miles southeast of Minneapolis. As part of the review of the license renewal application (LRA), the NRC is preparing a Supplemental Environmental Impact Statement (SEIS) under the provisions of Title 10 of the *Code of Federal Regulations* Part 51 (10 CFR Part 51), the NRC's regulation that implements the National Environmental Policy Act (NEPA) of 1969. The SEIS includes an analysis of pertinent environmental issues, including impacts to endangered or threatened species and fish and wildlife. This letter is being submitted under the provisions of the Endangered Species Act of 1973, as amended, and the Fish and Wildlife Coordination Act of 1934, as amended.

NMC is requesting renewal of its operating licenses for PINGP for a period of 20 years beyond the expiration of the current license terms of August 9, 2013, and October 29, 2014. This proposed action would include the use and continued maintenance of existing plant facilities and transmission lines. For the purpose of license renewal, NMC plans to replace the PINGP steam generators. As part of this refurbishment activity, NMC also plans to establish a temporary construction area approximately 100 yards northwest of the turbine building and to build permanent warehouses within existing plant boundaries. NMC states there will be no clearing of previously-undisturbed areas.

The PINGP site encompasses approximately 578 acres, and is located on the western shore of Sturgeon Lake. Prairie Island, upon which PINGP is located, is a low island terrace in the Mississippi River; please see the enclosed site boundary map. The Prairie Island Indian Reservation is directly north of the site.

PINGP has three cooling system operating modes: once-through, once-through with "helper" (mechanical draft) cooling towers in operation, and closed cycle (mechanical draft cooling towers only). The circulating water and service water systems withdraw water from the Mississippi River. River water moves into the intake screenhouse, where the circulating water pumps are housed, through eight intake bays, each equipped with a trash rack, a traveling screen, and high/low pressure wash systems. Four circulating water pumps supply water to the

condensers for cooling. Each pump has a design capacity of 147,000 gpm, with a total circulating water flow of approximately 588,000 gpm. Conditions outlined in NMC's National Pollutant Discharge Elimination System permit specify requirements for use of the cooling towers, in order to minimize effects on local aquatic resources. Three groundwater wells are used to meet domestic water needs.

One 161-kilovolt (kV) and four 345-kV transmission lines connect PINGP to the regional transmission system; please see the enclosed PINGP transmission system map. To support the SEIS preparation process and to ensure compliance with Section 7 of the Endangered Species Act, the NRC requests information on state-listed, proposed, and candidate species and critical habitat that may be in the vicinity of PINGP and its associated transmission line corridors. In addition, please provide any information you consider appropriate under the provisions of the Fish and Wildlife Coordination Act.

The NRC staff plans to hold two public NEPA scoping meetings on July 30, 2008. The first session will be held in the afternoon and an identical session will be held later that evening. The first meeting will convene at 1:30 p.m. and will continue until 4:30 p.m., as necessary. The second meeting will convene at 7:00 p.m. and will continue until 10:00 p.m., as necessary. Both sessions will be held at the Red Wing Public Library, 225 East Avenue, Red Wing, MN 55066. In addition, during the week of August 18, 2008, the NRC plans to conduct a site audit. You and your staff are invited to attend both the public meetings and the site audit. Your office will receive a copy of the draft SEIS along with a request for comments. The anticipated publication date for the draft SEIS is March 2009.

If you have any questions concerning the NRC staff's review of this LRA, please contact Mr. J.P. Leous, License Renewal Project Manager, at 301-415-2864 or Justin.Leous@nrc.gov.

Sincerely,

/RA by AStuyvenberg for/

Rani Franovich, Branch Chief
Projects Branch 2
Division of License Renewal
Office of Nuclear Reactor Regulation

Docket Nos. 50-282 & 50-306

Enclosures:
As stated

cc w/encls: See next page

condensers for cooling. Each pump has a design capacity of 147,000 gpm, with a total circulating water flow of approximately 588,000 gpm. Conditions outlined in NMC's National Pollutant Discharge Elimination System permit specify requirements for use of the cooling towers, in order to minimize effects on local aquatic resources. Three groundwater wells are used to meet domestic water needs.

One 161-kilovolt (kV) and four 345-kV transmission lines connect PINGP to the regional transmission system; please see the enclosed PINGP transmission system map. To support the SEIS preparation process and to ensure compliance with Section 7 of the Endangered Species Act, the NRC requests information on state-listed, proposed, and candidate species and critical habitat that may be in the vicinity of PINGP and its associated transmission line corridors. In addition, please provide any information you consider appropriate under the provisions of the Fish and Wildlife Coordination Act.

The NRC staff plans to hold two public NEPA scoping meetings on July 30, 2008. The first session will be held in the afternoon and an identical session will be held later that evening. The first meeting will convene at 1:30 p.m. and will continue until 4:30 p.m., as necessary. The second meeting will convene at 7:00 p.m. and will continue until 10:00 p.m., as necessary. Both sessions will be held at the Red Wing Public Library, 225 East Avenue, Red Wing, MN 55066. In addition, during the week of August 18, 2008, the NRC plans to conduct a site audit. You and your staff are invited to attend both the public meetings and the site audit. Your office will receive a copy of the draft SEIS along with a request for comments. The anticipated publication date for the draft SEIS is March 2009.

If you have any questions concerning the NRC staff's review of this LRA, please contact Mr. J.P. Leous, License Renewal Project Manager, at 301-415-2864 or Justin.Leous@nrc.gov.

Sincerely,

/RA by AStuyvenberg for/

Rani Franovich, Branch Chief
Projects Branch 2
Division of License Renewal
Office of Nuclear Reactor Regulation

Docket Nos. 50-282 & 50-306

Enclosures:

As stated

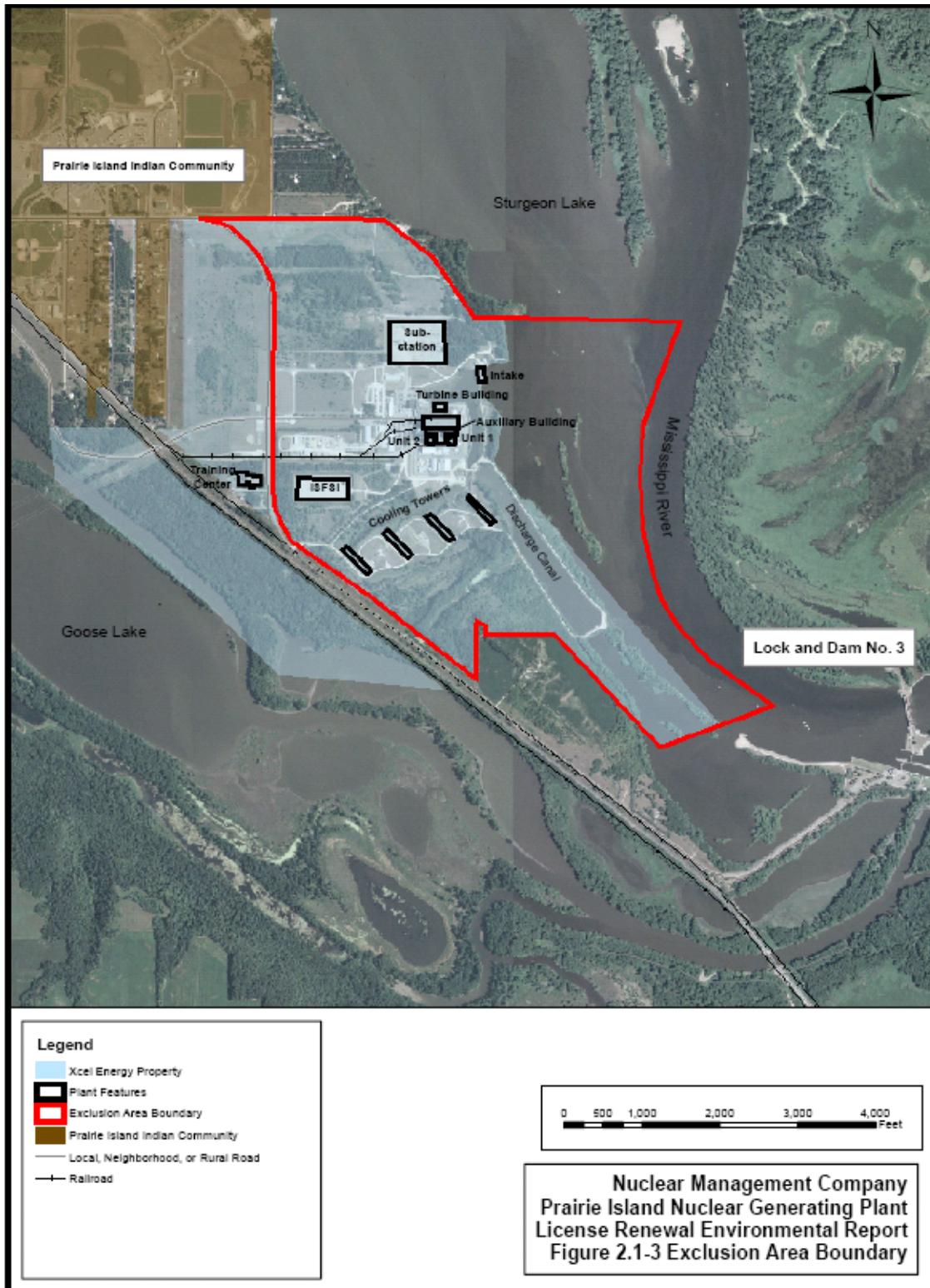
cc w/encls: See next page

DISTRIBUTION: See next page

ADAMS Accession Nos.: ML081930340

OFFICE	LA:DLR	PM:DLR:RPB1	PM:DLR:RPB2	BC:DLR:RPB2
NAME	SFigueroa	JLeous	RPlasse	AStuyvenberg for RFranovich
DATE	07/14/08	07/16/08	07/16/08	07/22/08

OFFICIAL RECORD COPY



Letter to E. Rusch from R. Franovich, July 22, 2008

SUBJECT: REQUEST FOR LIST OF STATE-PROTECTED SPECIES WITHIN THE AREA UNDER EVALUATION FOR THE PRAIRIE ISLAND NUCLEAR GENERATING PLANT, UNITS 1 AND 2, LICENSE RENEWAL APPLICATION REVIEW

HARD COPY:

DLR RF

DISTRIBUTION:

E-MAIL:

B. Holian / S. Lee(RidsNrrDlr)
T. Combs, OCA
T. Madden, OCA
R. Shane, OCA
B. Keeling, OCA
R. Franovich (RidsNrrDlrRebb)
R. Rikhoff (RidsNrrDlrReba)
R. Plasse
J. Leous
T. Wengert
R. Skokowski
K. Stoedter
P. Zurawski
OPA (RidsOpaMail)
D. McIntyre, OPA
V. Mitlyng
D. Roth, OGC
B. Mizuno, OGC
OGC (RidsOGCMailRoom)
DLR/REBB

Prairie Island Nuclear Generating Plant,
Units 1 and 2

cc:

Peter M. Glass
Assistant General Counsel
Xcel Energy Services, Inc.
414 Nicollet Mall (MP4)
Minneapolis, MN 55401

Manager, Regulatory Affairs
Prairie Island Nuclear Generating Plant
Nuclear Management Company, LLC
1717 Wakonade Drive East
Welch, MN 55089

Manager - Environmental Protection Division
Minnesota Attorney General's Office
445 Minnesota St., Suite 900
St. Paul, MN 55101-2127

U.S. Nuclear Regulatory Commission
Resident Inspector's Office
1719 Wakonade Drive East
Welch, MN 55089-9642

Administrator
Goodhue County Courthouse
Box 408
Red Wing, MN 55066-0408

Philip R. Mahowald
General Counsel
Prairie Island Indian Community
5636 Sturgeon Lake Road
Welch, MN 55089

Heather Westra
Prairie Island Indian Community
5636 Sturgeon Lake Road
Welch, MN 55089

Gene Eckholt
Nuclear Management Company, LLC
1717 Wakonade Drive East
Welch, MN 55089

Jim Holthaus
Nuclear Management Company, LLC
1717 Wakonade Drive East
Welch, MN 55089

Katie Himanga, Mayor
City of Lake City
205 West Center St.
Lake City, MN 55041

Commissioner
Minnesota Department of Commerce
85 7th Place East, Suite 500
St. Paul, MN 55101-2198

Tribal Council
Prairie Island Indian Community
ATTN: Environmental Department
5636 Sturgeon Lake Road
Welch, MN 55089

Nuclear Asset Manager
Xcel Energy, Inc.
414 Nicollet Mall (MP4)
Minneapolis, MN 55401

Dennis L. Koehl
Chief Nuclear Officer
Nuclear Management Company, LLC
414 Nicollet Mall (MP4)
Minneapolis, MN 55401

Joel P. Sorenson
Director, Site Operations
Prairie Island Nuclear Generating Plant
Nuclear Management Company, LLC
1717 Wakonade Drive East
Welch, MN 55089

Prairie Island Nuclear Generating Plant,
Units 1 and 2

Joan Marshman
30129 County 2 Blvd.
P.O. Box 62
Frontenac, MN 55026

Kristen Eide-Tollefson
Florence Township Commission
P.O. Box 130
Frontenac, MN 55026