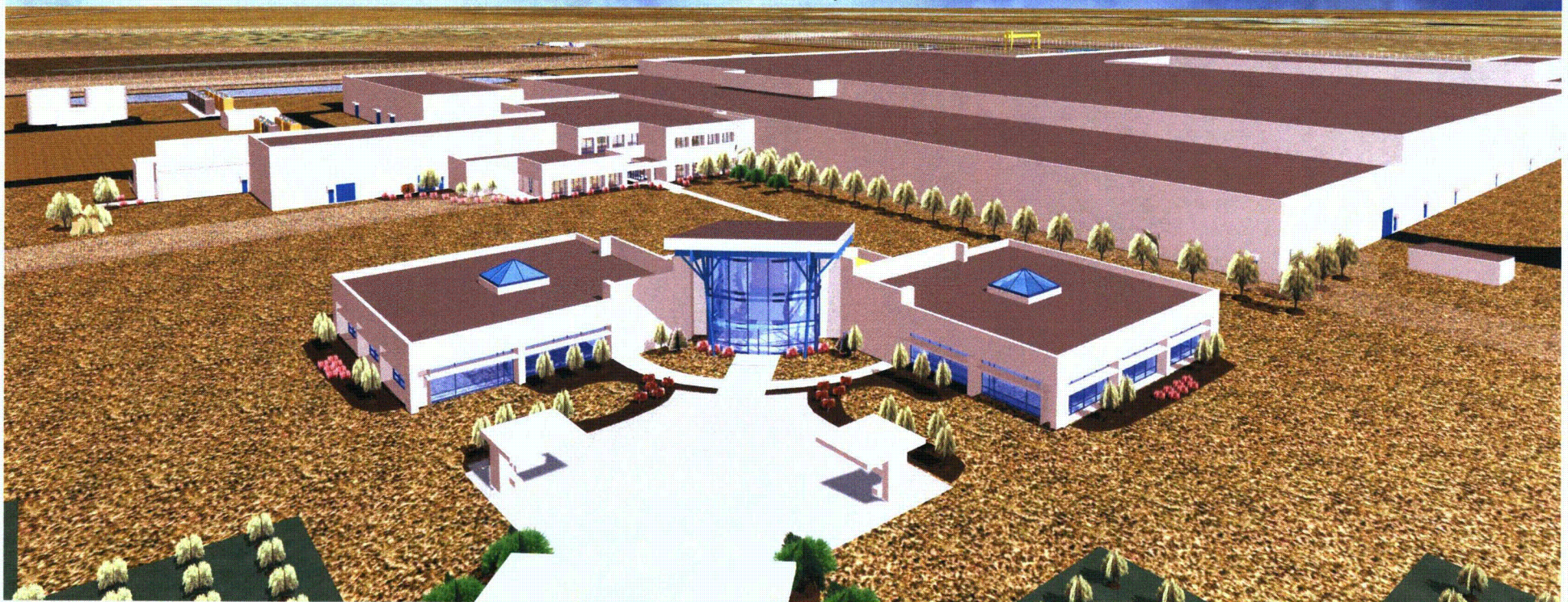


NRC Management Meeting

June 19, 2008



Agenda

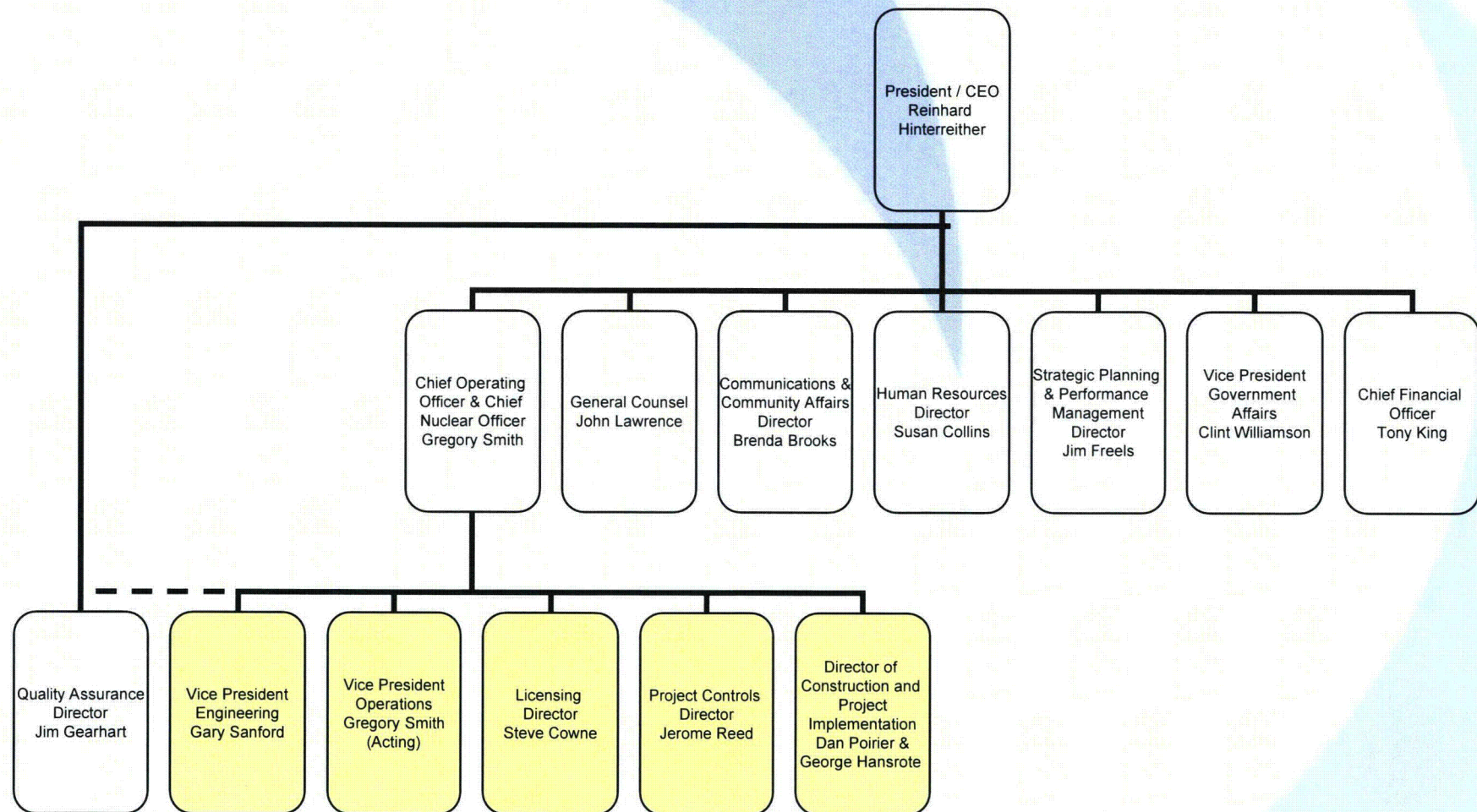


- Introduction & Opening Remarks
- Reorganization and its Impact
- Staffing
- Engineering Activities
- Construction Activities
- Operations Activities
- Regulatory Affairs
- Potential Site Expansion Plans
- Questions & Answers

- Opening Remarks

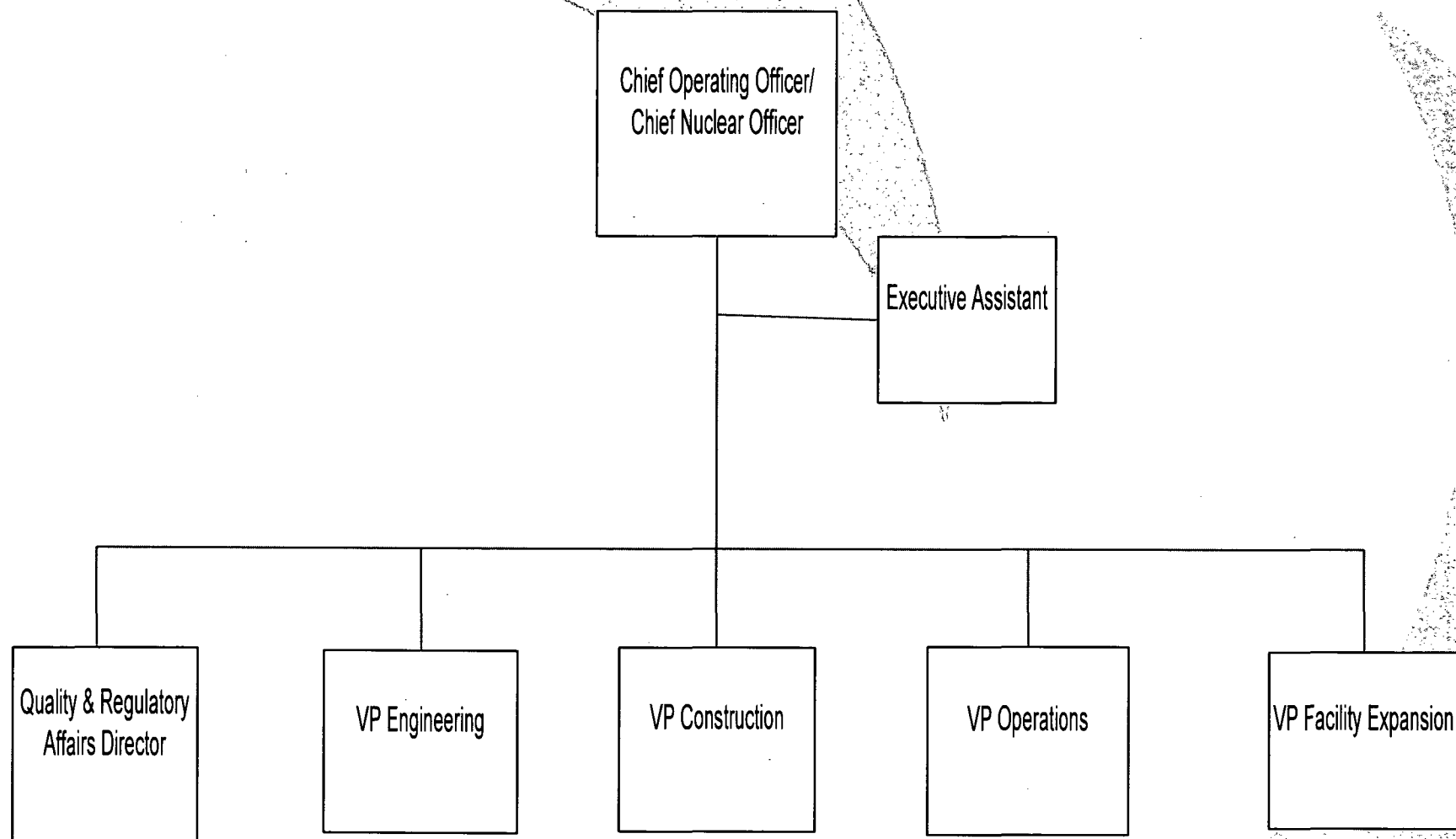
Organizational Structure

December 2007

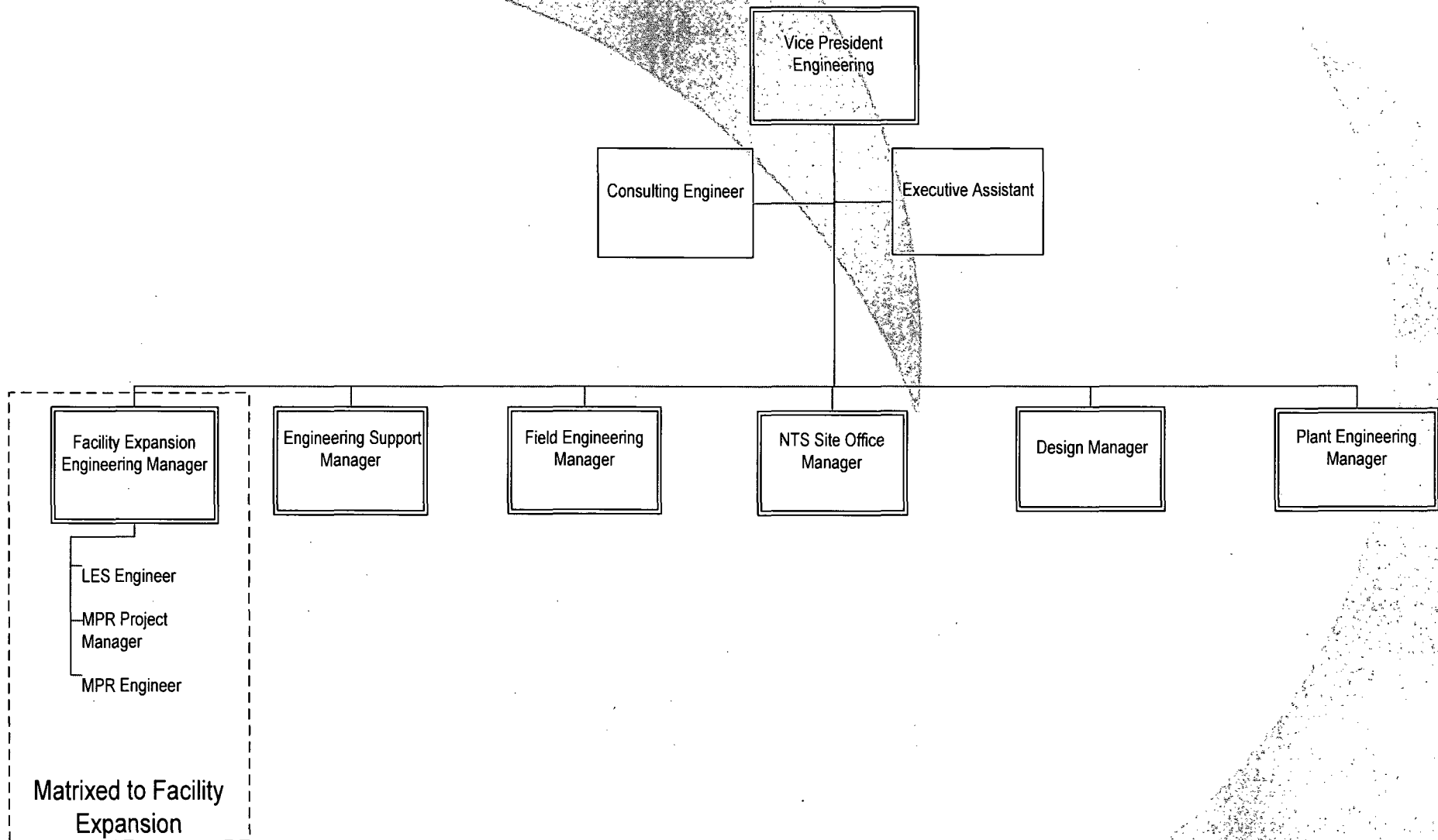


Organizational Structure [COO]

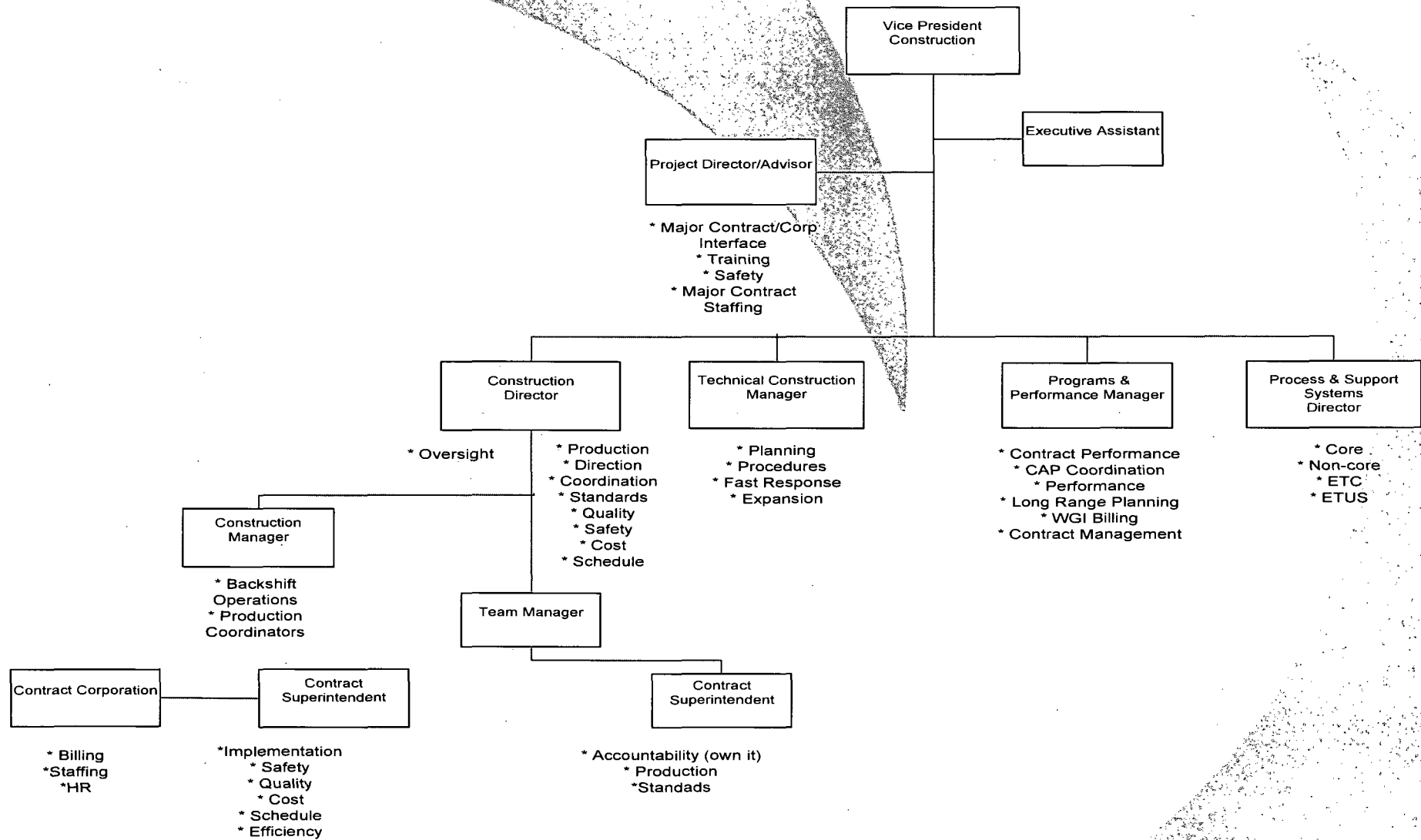
June 2008



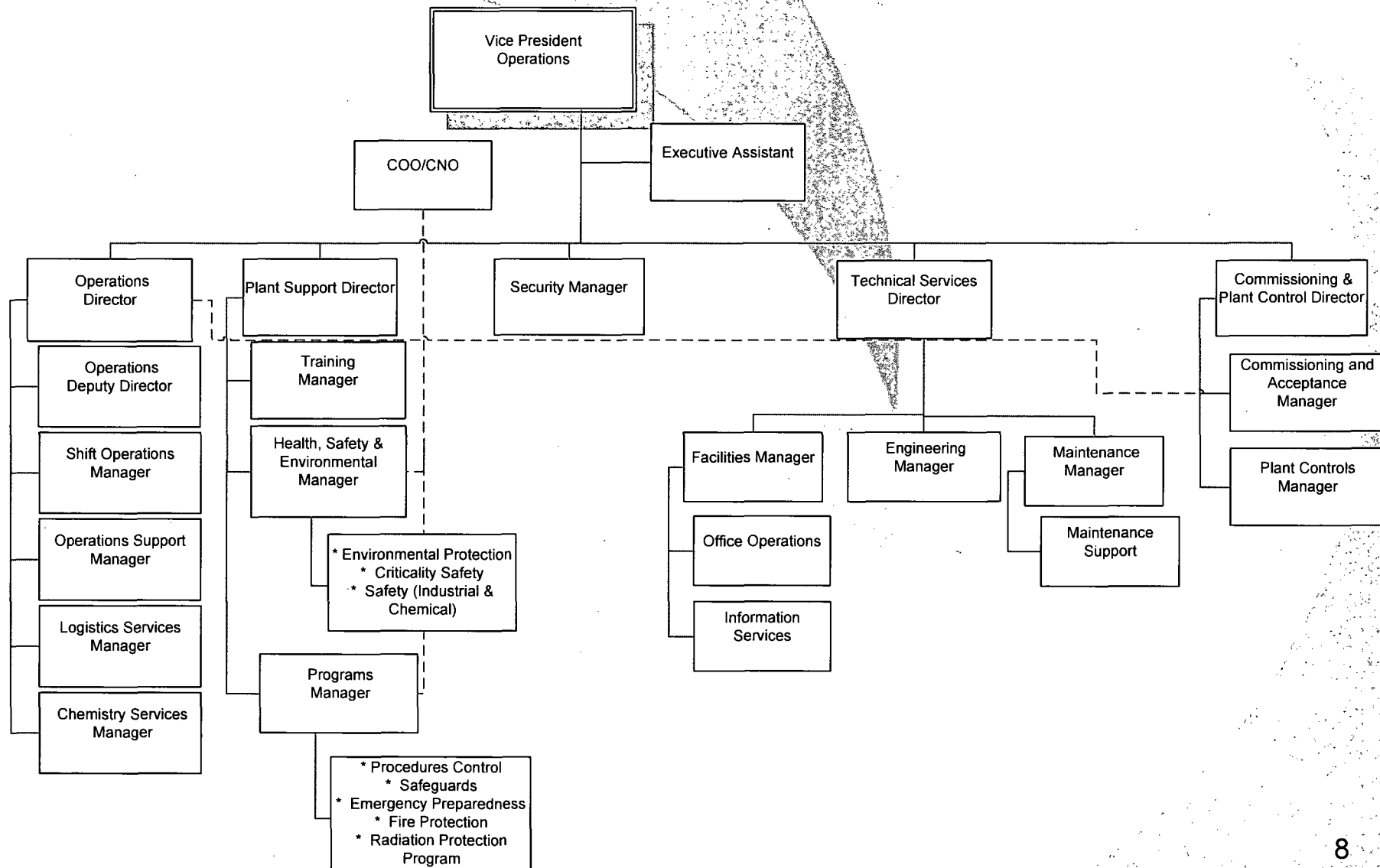
Engineering



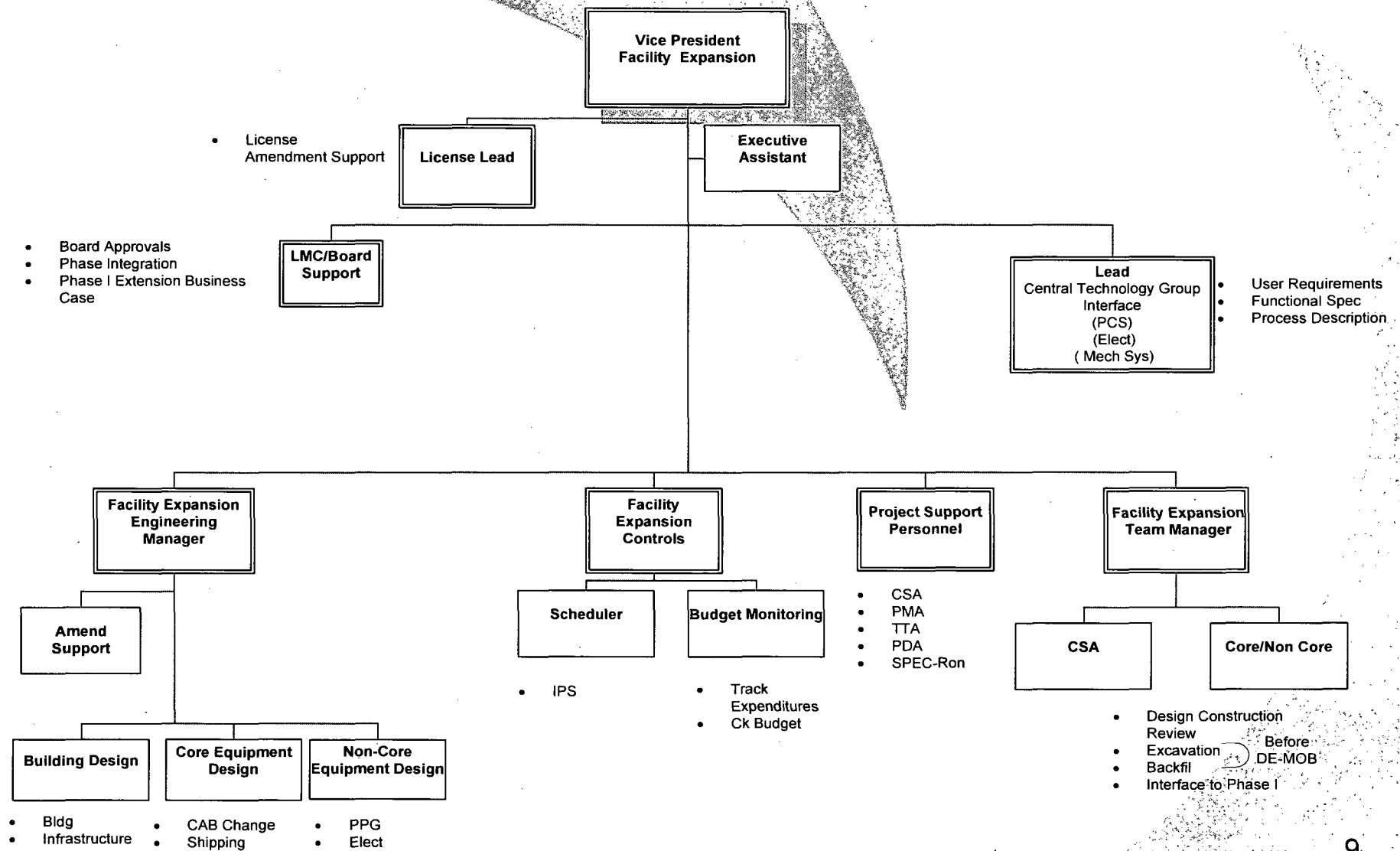
Construction Organization



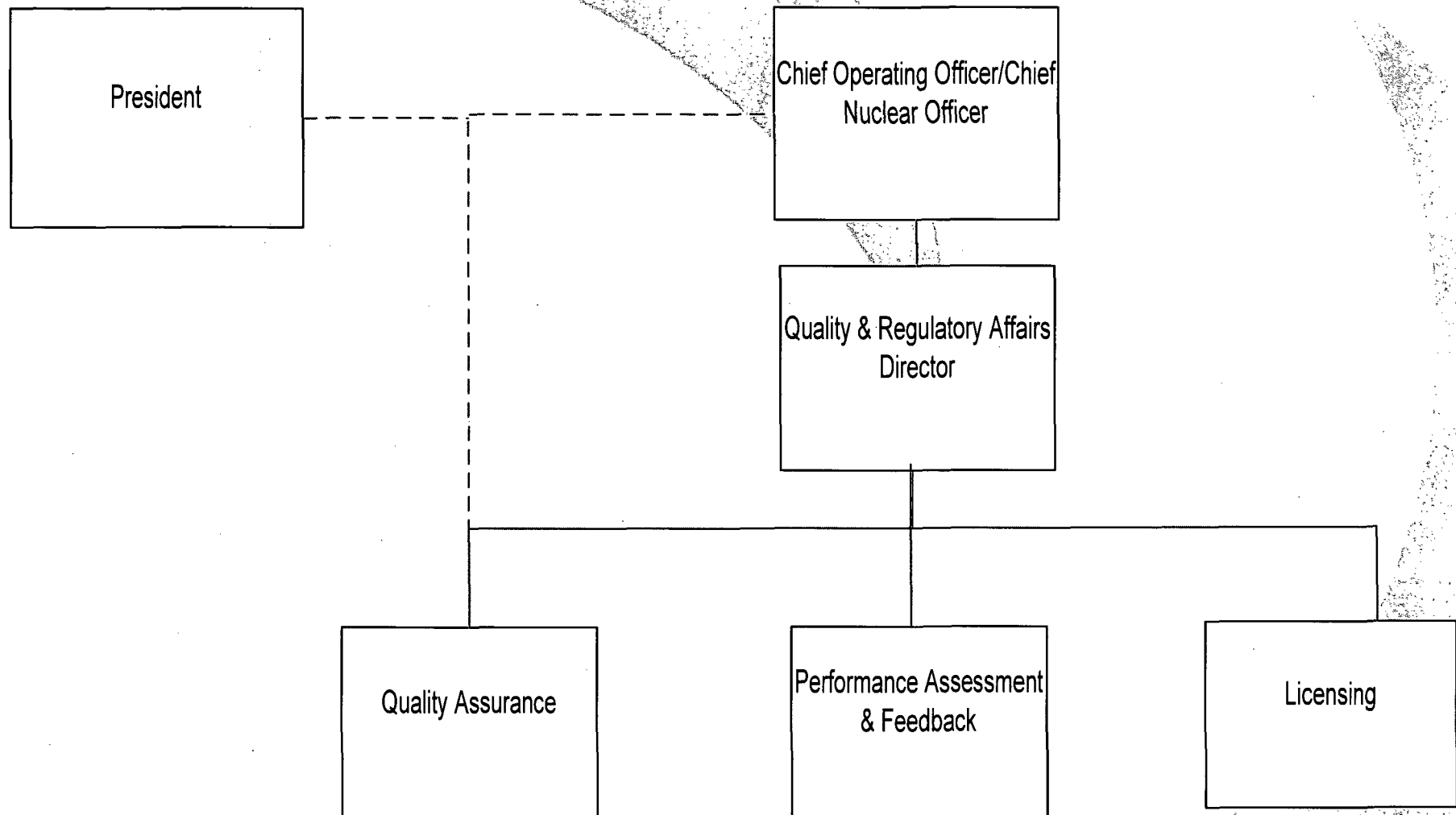
Operations Organization



Site Expansion Organization

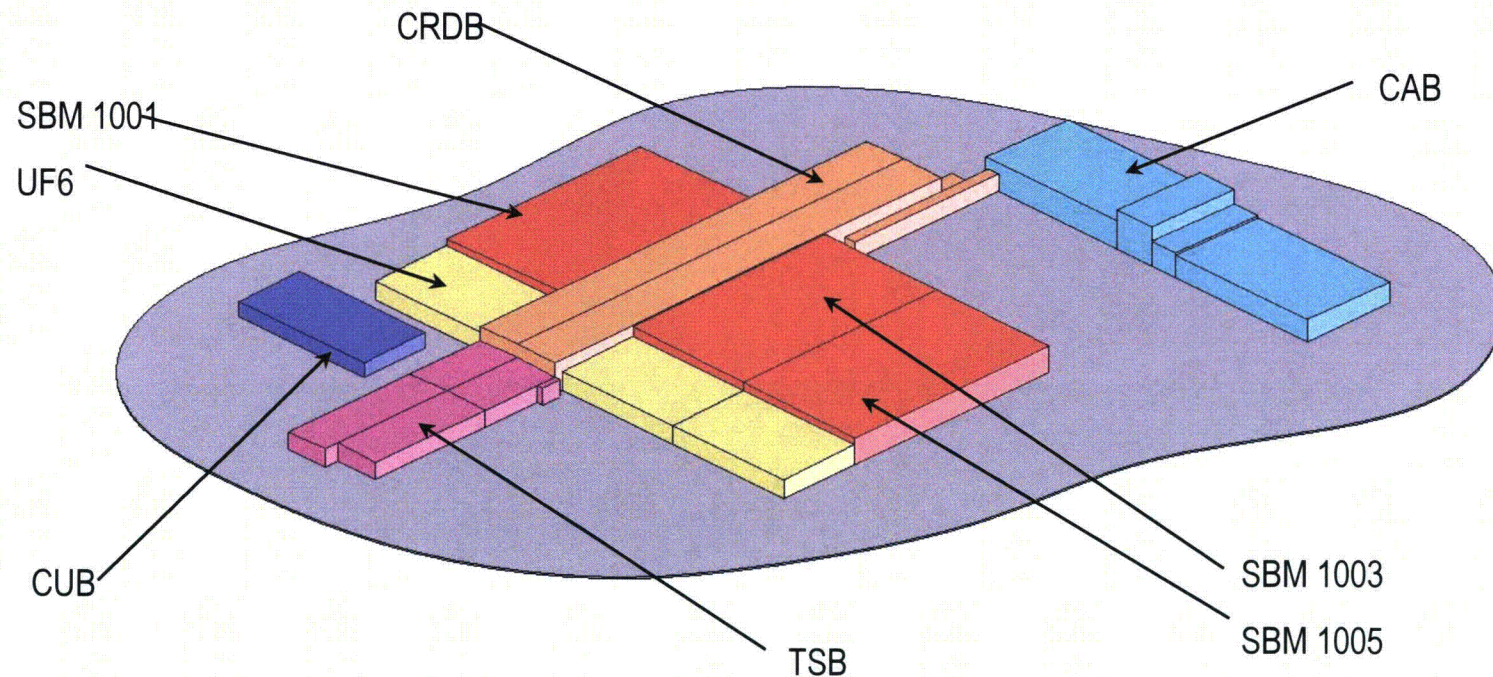


Quality & Regulatory Affairs



- **Employment as of the end of May:**
 - 225 regular employees
 - Our current annual payroll is over \$16 million
 - 1450 Contractors [approximate]

NEF Facility – General Plant Layout



CAB – Centrifuge Assembly Building
CUB – Central Utility Building
TSB – Technical Services Building

SBM 1001 – Separation Building 1
SBM 1003 and 1005 – Separation Building 2 & 3
CRDB – Cylinder Receipt & Dispatch Building

Engineering Design Activities



- All LES Design Management personnel now reside onsite.
- Engineering is on track to:
 - Complete all initial design (other than small design/build projects inside buildings) by mid 2008
 - Complete all owner acceptance reviews of design by 7/31/08
 - Transfer all NTS design agency responsibilities to NTS Site Office
 - Begin issuance of LES drawings and specifications on site
- Recent accomplishments include:
 - Organization staffed to approximately 180 with plan to downsize as work is completed, includes
 - Design Engineering
 - Design Management
 - Field Engineering
 - Procurement Engineering
 - Convening in-house ISA Team Reviews
 - Completing classified 70.72 reviews (documents to be transferred to NEF)

Construction Activities/Progress



- 115 KV Substation Energized
- 12,000 sq ft Warehouse complete
- 30,000 sq ft Warehouse complete
- ISO Freight Storage Pad complete
- Domestic Water Loop Complete
- Fire Protection Loop 95% Complete

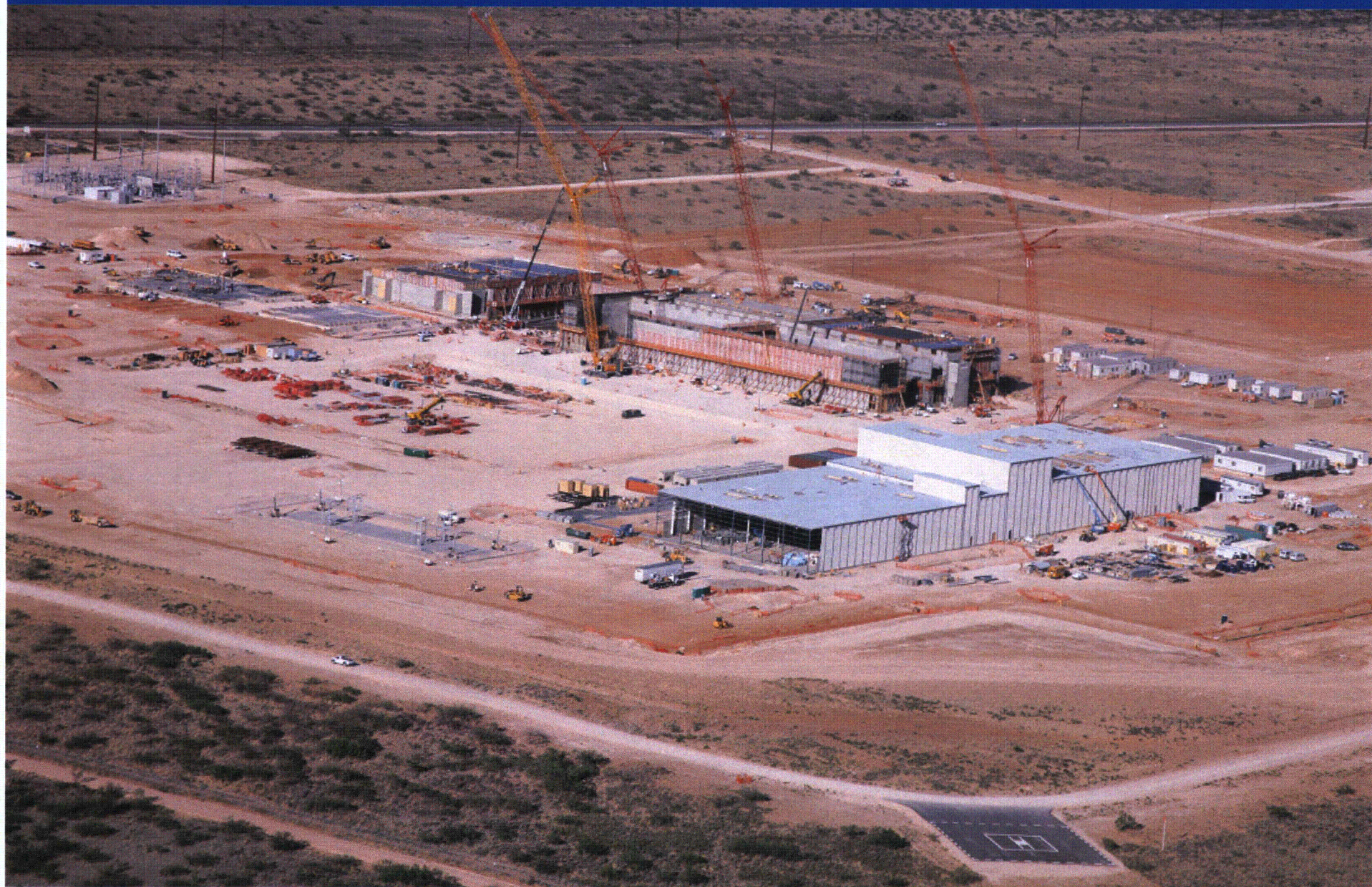
Construction Activities/Progress



- Central Utilities Building
 - Structure Essentially Complete
 - Diesel Generators Set
 - Electrical Cable Trays In progress
- Centrifuge Assembly Building
 - Structure Essentially Complete
 - Interior Walls, Mechanical & HVAC In Progress
 - Electrical cable Trays, Lighting & Conduit in Progress

- Separation Building Module
 - Structure 80% Complete
 - Thermal Enclosure & HVAC Ducting In Progress
 - Electrical Conduit & lighting In Progress
- Cylinder Receipt & Dispatch Building
 - Backfill Complete
 - Excavation For Footings In progress
- Technical Services Building
 - Foundation Concrete 85% Complete
 - Slab On-Grade & Steel Erection In Progress

Aerial View June 2008



Separations Building Module 1001



Inside Mini Hall 1



Inside Mini Hall 2



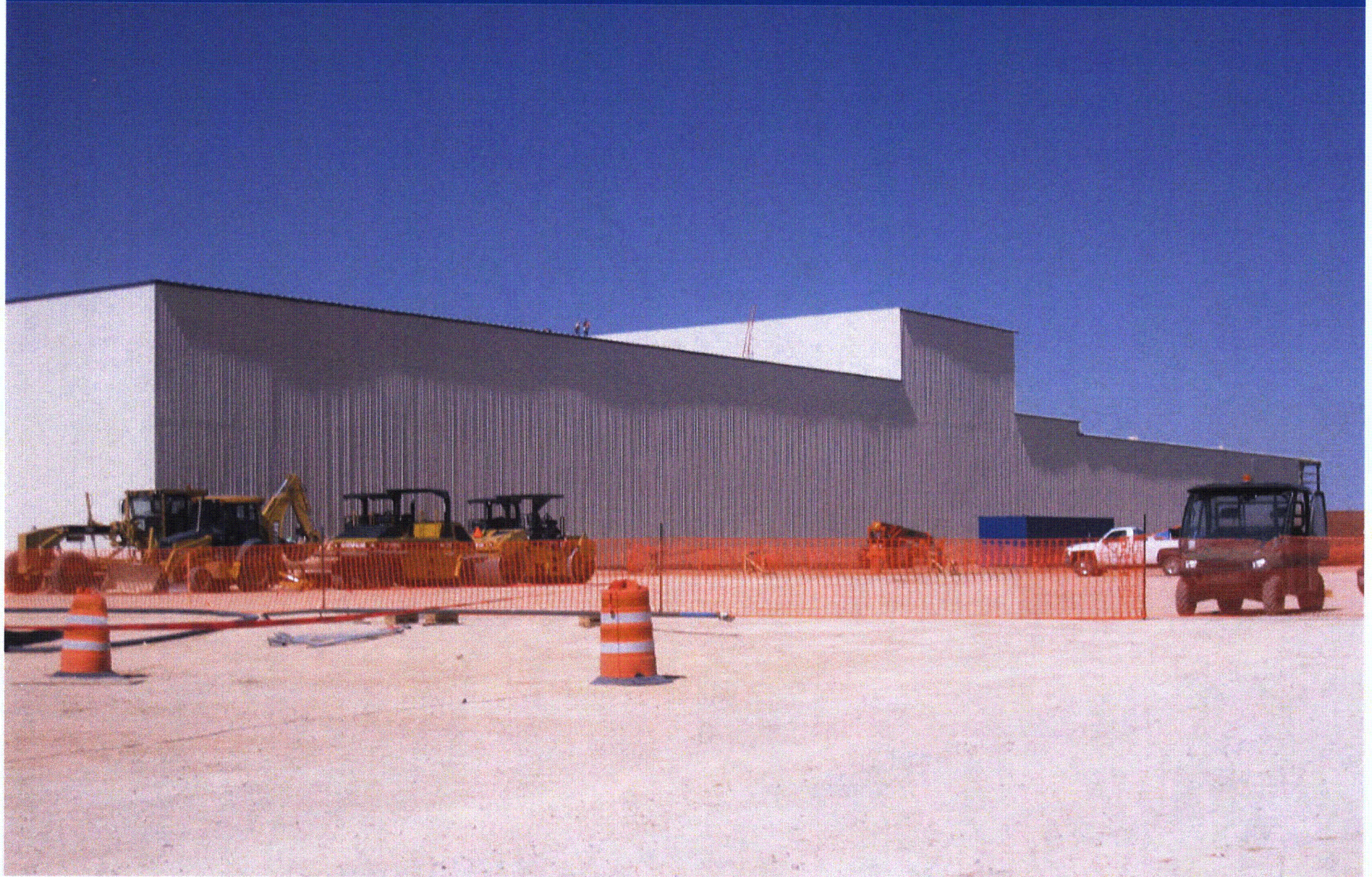
SBM 1001 Wall Construction



Process Services Corridor SBM 1001



Centrifuge Assembly Building [CAB]



Inside the CAB



Central Utilities Building [CUB]



Central Utilities Building



115 Kv Substation



- **Facilities**

- All LES personnel will be on site in temporary office space by the end of June.
- Engineering is being relocated to the site from Cherry Hill NJ. Completion of this is scheduled for the end of June.

- **Maintenance**

- Drafts of CAB IROFS surveillance procedures have been completed.
- Maintenance is supporting factory acceptance testing as needed.
- Maintenance has been supporting construction activities as a learning opportunity, and to assist.

- **FFD Program Implemented**

Operations/Maintenance Training



- Operator Class 1 and 2 completed Fundamentals Training, Almelo Systems Training, and 33 have completed Almelo On-the-Job Training.
- Almelo and Capenhurst operators have arrived and are being integrated into the shifts and receiving site-specific training.
- Hot Acceptance Test training for operators to be conducted during the summer of 2008.
- Maintenance Class 1 (20 technicians) completed Fundamentals training in December 2007.
- Mechanical Maintenance completed Maintenance Basic Skills (Level 100) in April 2008.
- Electrical & I & C Maintenance completed all but two Basic Skills courses in April 2008. Remaining courses awaiting delivery of Process Trainer for practical exercises, delivery June 2008
- Advanced Maintenance Skills training begins June 2008.

UPCOMING MILESTONES



- **First UF6 Onsite**
- **CAB Operational**
- **First cascade online in SBM 1001**
- **First Feed Cylinder Receipt**
- **Centrifuge placements in SBM 1001 begins**

Licensing Activities



- **CAB License Amendment Approved by NRC April 2008**
- **NRC Insp. of Construction Activities Jan. & April 2008**
- **NRC Inspection of QA February 2008**
- **NRC Inspection of ETUS Security February 2008**
- **Transportation Security Plan Approved 2008**
- **LES SPPP for ISO Pad submitted February 2008**
- **License Amendment Request for SBM Re-Design Submitted May 2008**

- **NRC Inspection of CROON Training System March 2008**
- **NRC Application for Byproduct Processing, Decommissioning Funding & Liability Insurance Amendment Mar 2008**
- **Physical Security Plan Submitted February 12, 2008**
- **ETUS SPPP for CAB Submitted April 2008**
- **NRC Initial Inspection of Selected Electrical IROFS April 2008**
- **NRC Security Inspection of ISO Pad May 2008**

Corrective Action Program



- Electronic Corrective Action Database operating for personnel at NEF
 - LES and Contractor Personnel have access
 - Operating Experience Database obtain INPO and NRC information daily
 - Developing URENCO and DOE database links
 - Trending Manager determines trends on a monthly basis for analysis and performance improvement initiatives
- Root Cause Training established with New Mexico Junior College
 - Professor has Root Cause certifications
 - First new analyst class completed in May 2008

Potential Site Expansion Plans



- **Phase 1 – SBM 1001 – 24 Cascades, TC-12, 1.6M SWU
Approved by URENCO Board**
- **Phase 2 – SBM 1003 & CAB Mod
Requires URENCO Board Approval**
- **Phase 3 – SBM 1005 & CUB Mod
Requires URENCO Board Approval**
- **Phase 4 – SBM 1007
Requires URENCO Board Approval**

- Closing Remarks