



U.S.NRC

UNITED STATES NUCLEAR REGULATORY COMMISSION

Protecting People and the Environment

Screening Criteria for Inspection Results

July 10, 2008

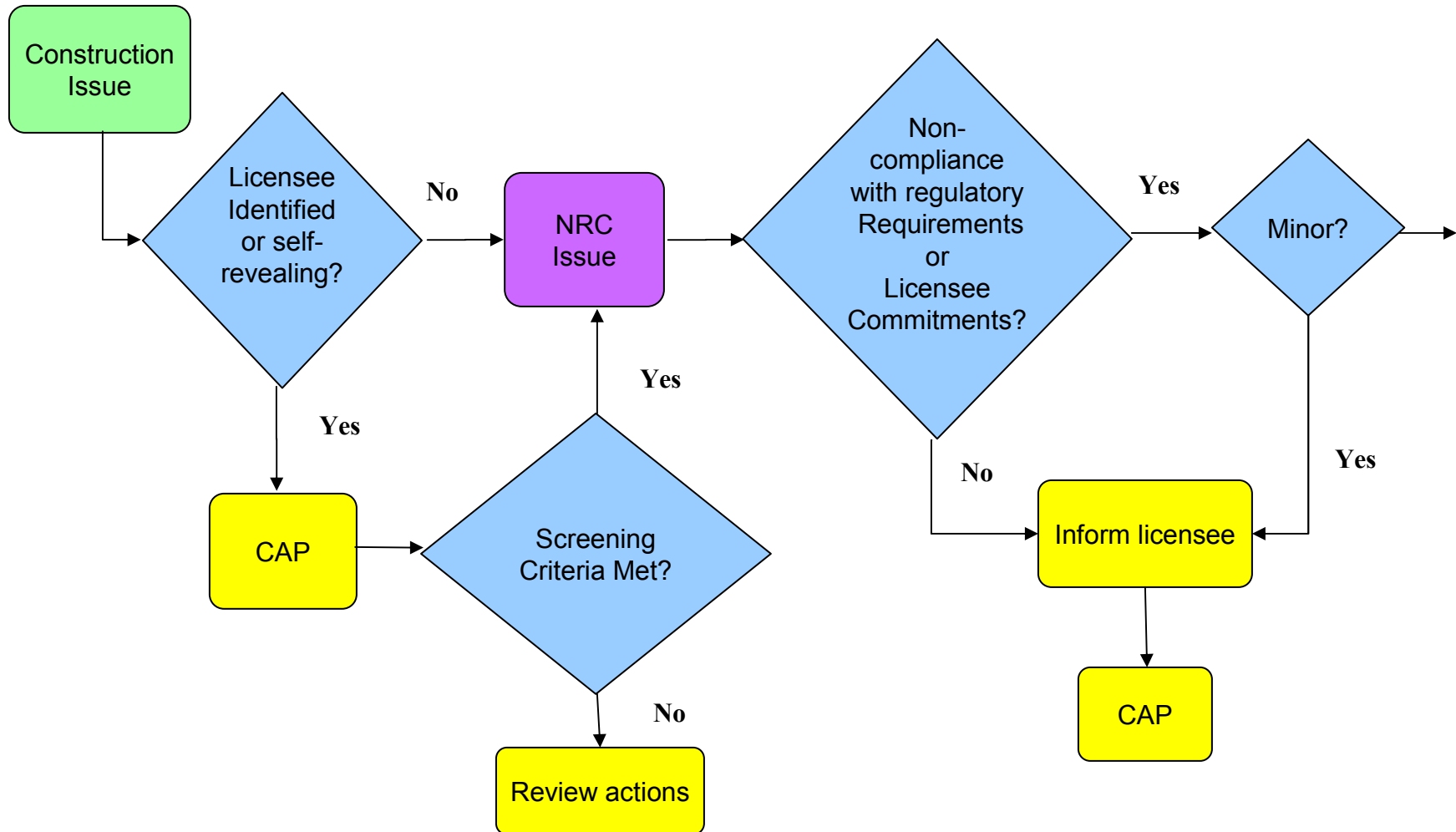


Presentation Topics

- Background (flowchart)
- Licensee-identified
- Self-revealing
- NRC-identified
- Stakeholder comments



Background - Flowchart





Licensee-identified

- Not NRC-identified or self-revealing
- Most are discovered through a licensee program or process
- Examples include deficiencies during routine construction activities, QA activities, pre-operational testing, etc



NRC and Licensee Response

- Licensee places deficiency into CAP
- NRC will not take enforcement action in most cases except when:
 - Escalated enforcement action threshold
 - Potential harassment, intimidation, or willfulness



NRC and Licensee Response

- Technical or environmental condition not previously observed
- Invalidates previously closed ITAAC
- previously unknown weakness identified by inspector (adding value)



Self-Revealing

- Self-evident and require no active and deliberate observation
- Readily apparent through a detectable degradation in material condition, capability, or functionality of equipment
- Examples include failure of equipment or instrumentation during testing, non-compliance with radiography exclusion area requirements discovered through electronic dosimeter alarms, etc



NRC and Licensee Response

- Licensee places deficiency into CAP
- NRC will not take enforcement action in most cases except when:
 - Threshold for examples listed above for licensee-identified are met
 - Inspections or tests yield results outside the scope of test
 - Prior missed opportunities or are repetitive due to inadequate CA's
 - inadequately controlled construction activities that directly causes an event



NRC-Identified

- Licensee enters deficiency into CAP
- Deficiencies found by NRC inspectors of which the licensee was not previously aware or had in their CAP
- Deficiencies where an NRC inspector has added value
- NRC processes deficiency through flowchart



Summary

- Licensees expected to place deficiencies into CAP
- Graded approach applied to NRC engagement of identified deficiencies
- Screening criteria allows NRC to engage in certain circumstances for licensee-identified and self-revealing issues



U.S.NRC

UNITED STATES NUCLEAR REGULATORY COMMISSION

Protecting People and the Environment

Input/Feedback/Questions