



Entergy Nuclear Operations, Inc.
Palisades Nuclear Plant
27780 Blue Star Memorial Highway
Covert, MI 49043
Tel 269 764 2000

April 28, 2008

10 CFR 50, Appendix I
Technical Specification 6.6.3

U. S. Nuclear Regulatory Commission
ATTN: Document Control Desk
Washington, DC 20555-0001

Big Rock Point Plant
Dockets 50-155 and 72-043
License No. DPR-6

2007 Radiological Environmental Operating Report

Dear Sir or Madam:

Entergy Nuclear Operations, Inc. is submitting the enclosed Radiological Environmental Operating Report for the Big Rock Point Plant. This report was prepared in accordance with the requirements of 10 CFR 50, Appendix I, Section IV.B, and Technical Specification 6.6.3. The period covered by the enclosed report is January 1, 2007, through December 31, 2007.

Summary of Commitments

This letter contains no new commitments and no revision to existing commitments.

A handwritten signature in cursive script that reads "Laurie Lahti".

Laurie A. Lahti
Licensing Manager
Palisades Nuclear Plant

Enclosure

CC Administrator, Region III, USNRC
NRC Decommissioning Inspector, Big Rock Point
NRC NMSS Project Manager

**ENCLOSURE
BIG ROCK POINT PLANT
2007 RADIOLOGICAL ENVIRONMENTAL OPERATING REPORT**

I. Introduction

The 2007 Big Rock Point (BRP) Annual Radiological Environmental Operating Report provides a summary and data interpretation of the BRP Radiological Environmental Monitoring Program (REMP) as conducted during the 2007 reporting period. Reporting requirements are detailed in the BRP Defueled Technical Specification, Section 6.6.3, and the Offsite Dose Calculation Manual (ODCM) Section III, Subsection 2.0.

During 2006, site decommissioning activities were completed. The last activity was the final site survey which concluded that the former BRP Nuclear Plant met the radiological criteria for unrestricted use in accordance with 10 CFR 20.1402. On April 11, 2007, the BRP license was transferred to Entergy Nuclear Palisades, LLC.

The BRP ODCM, Section III, contains the requirements for the REMP. The radiological environmental monitoring sampling requirements are greatly reduced from the plant's operating period and now encompass independent spent fuel storage installation (ISFSI) operations.

There was a revision to the ODCM in 2007 that provided clarification of which thermoluminescent dosimeters (TLDs) are required for ISFSI-only operation.

Tables 1, 2 and 3 provide a summary of 2007 BRP REMP sample requirements and results. Detailed sample station identification and location information is included in Attachment 2.

II. Discussion and Interpretation of Results

A. TLDs – Gamma Dose

The BRP Gamma Dose Assessment Program consists of 11 TLD locations: Four at the outside perimeter of the ISFSI (locations: BR-18, BR-19, BR-20 and BR-21), four at the ISFSI protected area fence line (locations: BR-22, BR-23, BR-24 and BR-25), and three control TLDs, 10.5 to 50 miles out (locations: BR-5 Petoskey, BR-6 Boyne City and BR-7 Traverse City). Environmental gamma doses are measured quarterly and annually by placement of two TLD badges per designated location. Attachment 2 provides a description and diagram of TLD locations.

For 2007 the average quarterly gamma readings were:

20.4 millirem for protected area fence TLDs,
15.2 millirem for ISFSI outside perimeter TLDs, and
17.8 millirem for the control TLD locations.

For 2007 the average annual gamma readings were:

96.8 millirem for protected area fence TLDs,
53.4 millirem for ISFSI outside perimeter TLDs, and
73.3 millirem for the control TLD locations.

The comparative evaluation of the protected area fence line quarterly TLD mean and the ISFSI outside perimeter TLD mean measured in 2007 are nominally elevated from that of 2006. This is comparable to the nominal elevation of the control TLD data for 2007.

A comparative evaluation was also completed of the 2007 offsite control TLD data to the ISFSI outside perimeter TLD data. The ISFSI outside perimeter mean, although lower than the offsite control mean, is not statistically different than the offsite control TLD mean.

Each TLD badge contains a 4-zone CaSO_2 phosphor wafer (the wafer also includes an additional backup/reserve read-out zone). Sensitivity for the multi-zone TLDs are 1.0 millirem with a linear response to 1000 rem.

B. Air Samples

The BRP REMP no longer requires that airborne surveillance be conducted.

C. Milk

The BRP REMP no longer requires that milk samples be collected.

D. Lake Water

The BRP REMP no longer requires that lake water samples be collected.

E. Drinking Water

The BRP REMP no longer requires that drinking water samples be collected.

F. Crops

The collection of food crops/vegetation is not required by the BRP REMP.

G. Sediment

The BRP REMP no longer requires that well water samples be collected.

H. Aquatic Biota

The collection of aquatic biota (algae and periphyton) is no longer required by the BRP REMP.

III. Assessment of BRP's Operational Environmental Impact

Review and comparison of the 2007 BRP radiological environmental monitoring data to previous data shows that the parameters analyzed support the conclusion that ISFSI operations have had minimal environmental impact.

Table 1. Sampling and Analysis Summary

<u>Medium</u>	<u>Description</u>	<u>Location(s)</u>	<u>Type of Analysis</u>	<u>Number of Samples Collected</u>	<u>Frequency of Analysis</u>
TLD	Continuous	BRP 18-25, 5-PT, 6-BC, 7-TR	Gamma Isotopic	44 11	Quarterly Annual ^a
Lake Water	1 gallon composite	1-ST	Tritium, Gamma Isotopic	0	No Longer Required
Well Water	1 gallon grab/composite	Site Well	Tritium, Gamma Isotopic	0	No Longer Required
Monitoring Wells	1 gallon grab	MW 1-9 Gamma Isotopic	Tritium, Gamma Isotopic	0	No Longer Required
Sediment	Grab	1-ST, 24-STS, 25-STN, 26-LP	Gamma Isotopic	0	No Longer Required
Fish	Grab	1-ST Discharge	Gamma Isotopic	0	No Longer Required

Table Notes

^a Only quarterly TLD's are required per Big Rock Point ODCM

Table 2. Sample Data Summary ^a

Medium or Pathway Sampled (Units)	Analysis Evaluated Versus Total Number Analyses Performed	Lower Limit of Detection (LLD) ^b	All Indicator Locations Mean ^c (Range)	All Control Locations Mean ^c (Range)	Nonroutine Measurements	
<u>Direct Radiation:</u>						
TLD – Protected Area (mR) Fence	TLD (quarterly) ^{d e}	16/16	1.0	16/16 20.4 (6.8-38.7)	12/12 17.8 (11.7-27.8)	None
	TLD (annual) ^e	4/4	1.0	4/4 96.8 (68.7-165.0)	3/3 73.3 (50.5-111.4)	None
TLD – ISFSI Outside (mR) Perimeter	TLD (quarterly) ^{d e}	16/16	1.0	16/16 15.2 (10.1-40.4)	12/12 17.8 (11.7-27.8)	None
	TLD (annual) ^e	4/4	1.0	4/4 53.4 (45.2-61.2)	3/3 73.3 (50.5-111.4)	None
<u>Waterborne:</u>						
Lake Water (pCi/L)	Sample not required					
Well Water (pCi/L)	Sample not required					
<u>Lake Sediment:</u>						
Sediment (pCi/g dry)	Sample not required					
<u>Biota:</u>						
Fish (pCi/g wet)	Sample not required					
Crayfish (pCi/g wet)	Sample not required					

Table Notes:

^a Values for sample locations with the greatest annual mean are provided in Table 3.

^b Nominal LLD as defined in the Big Rock Offsite Dose Calculation Manual Section I, Table I-3 and vendor analytical capabilities.

^c Mean and range data reported are based upon detectable measurements.

^d Quarterly TLD results are normalized for 91 days net.

^e Annual TLDs are read annually, and quarterly TLDs are read quarterly. Annual and quarterly measurements are compared to control measurements to evaluate compliance with 10 CFR 72.104. The results for the ISFSI TLDs and the average of the control TLDs measured in 2007 are summarized in the Table.

Table 3. Reporting Results Greatest Mean Sampling Location

<u>Medium</u>	<u>Type of Analysis</u>	<u>Location</u>	<u>High</u>	<u>Low</u>	<u>Mean</u>
TLD – Protected Area Fence (mR)	TLD (Quarterly) ^{a b}	BRP-23	38.7	19.1	31.0
	TLD (Annual) ^b	BRP-23	---	---	165.0
TLD – ISFSI Outside Perimeter (mR)	TLD (Quarterly) ^{a b}	BRP-21	40.4	10.4	18.9
	TLD (Annual) ^b	BRP-21	---	---	61.2
Lake Water (pCi/L)	No Longer Required				
Well Water (pCi/L)	No Longer Required				
Sediment (pCi/g dry)	No Longer Required				
Fish (pCi/g wet)	No Longer Required				
Crayfish (pCi/g wet)	No Longer Required				

Table Notes:

^a Quarterly TLD results are normalized for 91 days net.

^b Annual TLDs are read annually, and quarterly TLDs are read quarterly. Annual and quarterly measurements are compared to control measurements to evaluate compliance with 10 CFR 72.104. The results for the ISFSI TLDs and the average of the control TLDs measured in 2007 are summarized in the Table.

Attachments

1. Sample Collection Anomalies
2. Big Rock Point Environmental Sample Schedule and Sample Location Maps
3. Radiological Environmental Monitoring Program data as provided by Environmental, Inc. Midwest Laboratory, Northbrook, IL
4. Environmental, Inc. Midwest Laboratory EPA Interlaboratory Comparison Program Results

Attachment 1
Sample Collection Anomalies

There were no sample anomalies in 2007.

**Attachment 2
Big Rock Point
Environmental Sample Schedule and Sample Location Maps**

TABLE 1-1

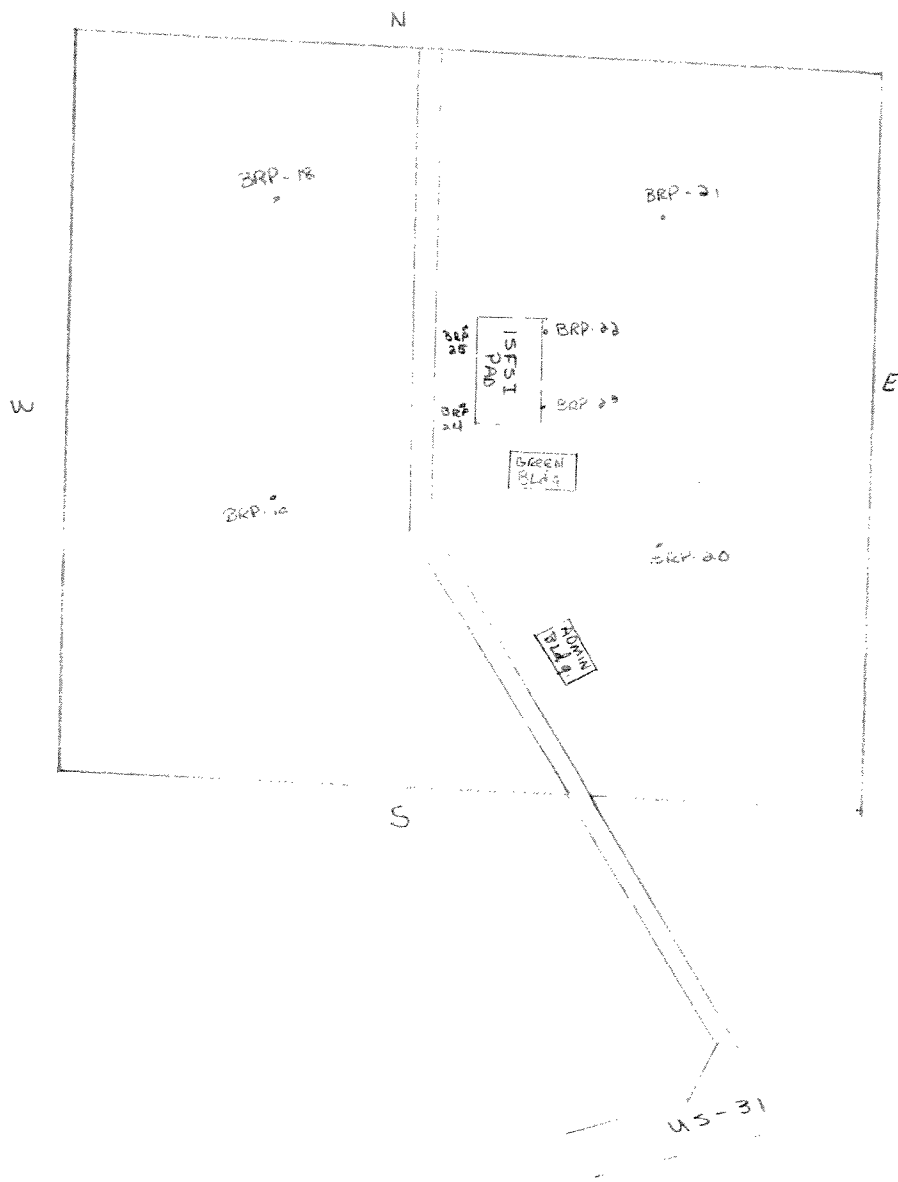
RADIOLOGICAL ENVIRONMENTAL MONITORING PROGRAM

Exposure Pathway and/or Sample	Number of Representative Samples and Sample Locations ^a	Sampling and Collection Frequency	Type and frequency of Analysis
1. Direct Radiation ^b	21 monitoring stations either with two or more TLDs or one instrument for measuring and recording dose rate continuously, placed as follows ^d : a) Miscellaneous site locations (4) b) A ring of stations (6) at or near the Site boundary c) Balance of stations (3) placed to serve as control stations d) Outside perimeter of ISFSI (4) ^e e) ISFSI protected area fence line (4) ^e	Quarterly	Gamma dose quarterly
2. Waterborne			
a. Lake	1 sample near site	Semiannual (grab)	Tritium and gamma isotopic ^c
b. Well (drinking) and groundwater monitoring wells	1 sample from Site well, if in use, and 1 sample from minimum of 6 monitor wells	Semiannual (grab) Semiannual (grab)	Tritium and gamma isotopic semiannually
3. Biota			
a. Marine	1 fish or invertebrate sample where clarified, detained water enters lake	Semiannual (grab) Apr-Nov	Gamma Isotopic Semiannually
4. Lake Sediment			
a. Shoreline	1 sample where clarified, detained water enters lake	Semiannual (grab) Apr-Nov	Gamma Isotopic Semiannually
b. Shoreline	1 sample each side of 4.a (above), within ~½ mile	Semiannual (grab) Apr-Nov	Gamma Isotopic Semiannually

Table 1-1 Notations

- a. Deviations are permitted from the required sampling schedule if specimens are unobtainable due to hazardous conditions, seasonal unavailability, malfunction of automatic sampling equipment and other legitimate reasons. If specimens are unobtainable due to sampling equipment malfunction, every effort shall be made to complete corrective action prior to the end of the next sampling period. All deviations from the sampling schedule shall be documented in the Annual Radiological Environmental Operating Report pursuant to the Reporting Requirements of ODCM, Section III. Alternative media and locations may be chosen for any particular pathway if designated locations or media are not available, and appropriate substitutions are made within 30 days in the radiological environmental monitoring program.
- b. One or more instruments, such as a pressurized ion chamber, for measuring and recording dose rate continuously may be used in place of, or in addition to, integrating dosimeters. The background dosimetry requirement also may be met through use of dosimeters shared with another facility, or from data provided by another entity, such as the State of Michigan, as appropriate for this site.
- c. Gamma isotopic analysis means the identification and quantification of gamma-emitting radionuclides that may be attributable to licensed materials in the effluents from the facility.
- d. For the purposes of this table, a TLD is considered to be one phosphor; two or more phosphors or phosphor readout zones in a packet are considered as two or more dosimeters.
- e. TLDs designated for ISFSI-only operation.

Big Rock Point Environmental Sample Location Map



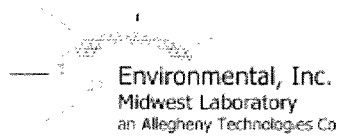
Big Rock Point Control TLD Locations

Big Rock Point
CONTROL TLD LOCATIONS



Attachment 3

**Radiological Environmental Monitoring Program data as provided by
Environmental, Inc. Midwest Laboratory, Northbrook, IL**



Environmental, Inc.
Midwest Laboratory
an Allegheny Technologies Co.

700 Landwehr Road • Northbrook, IL 60062-2320
(847) 564-0700 fax (847) 564-4517

FINAL REPORT
TO
ENERGY NUCLEAR OPERATIONS, INC
COVERT, MICHIGAN

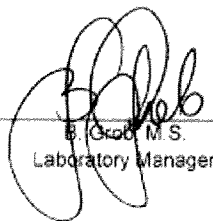
RADIOLOGICAL ENVIRONMENTAL MONITORING PROGRAM (REMP)
FOR
BIG ROCK INDEPENDENT SPENT FUEL STORAGE INSTALLATION

PREPARED AND SUBMITTED
BY
ENVIRONMENTAL INCORPORATED MIDWEST LABORATORY

Project Number: 8022

Reporting Period January - December, 2007

Reviewed and
Approved by _____



B. Grob, M. S.
Laboratory Manager

Date 1/17/08

Distribution: Larry Potter (1 copy)

BIG ROCK POINT
TABLE OF CONTENTS

<u>Section</u>	List of Tables	iii
1	INTRODUCTION.....	1
2	LISTING OF MISSED SAMPLES	2
<u>Appendices</u>		
A	Interlaboratory Comparison Program Results	A-1
B	Data Reporting Conventions.....	B-1
C	Special Analyses	C-1

BIG ROCK

LIST OF TABLES

<u>No.</u>		<u>Page</u>
1	Gamma Radiation, as measured by TLDs, Quarterly Exposure	1-1
2	Gamma Radiation, as measured by TLDs, Annual Exposure	2-1

BIG ROCK

1 0 INTRODUCTION

The following constitutes a final 2007 Progress Report for the Radiological Environmental Monitoring Program conducted at the Entergy Nuclear Operations, Big Rock Independent Spent Fuel Storage Installation. Results of completed analyses are presented in the attached tables.

All concentrations, except gross alpha and gross beta, are decay corrected to the time of collection.

All samples were collected within the scheduled period unless noted otherwise in the Listing of Missed Samples.

BIG ROCK
2.0 LISTING OF MISSED SAMPLES

Sample Type	Location	Expected Collection Date	Reason
-------------	----------	--------------------------------	--------

BIG ROCK

Table 1. Gamma radiation, as measured by TLDs, quarterly exposure.
Units: mR/31 days^a

	<u>1st Qtr.</u>	<u>2nd Qtr.</u>	<u>3rd Qtr.</u>	<u>4th Qtr.</u>
Date Placed	12-01-06	04-03-07	07-05-07	10-01-07
Date Removed	04-02-07	07-05-07	10-01-07	01-02-08
Intransit (mR)	3.0 ± 0.4	2.6 ± 1.5	4.5 ± 1.0	5.2 ± 0.4
BRP-05 (PT) (Control)	11.8 ± 0.6	16.1 ± 1.6	11.7 ± 1.5	14.7 ± 0.9
BRP-06 (BC) (Control)	14.1 ± 0.6	17.9 ± 1.7	13.6 ± 1.2	17.7 ± 1.2
BRP-07 (TR) (Control)	22.3 ± 1.1	25.5 ± 1.7	20.5 ± 1.3	27.8 ± 0.7
BRP-16 (ISFSI-NW)	10.4 ± 1.0	14.3 ± 1.5	10.1 ± 1.1	12.3 ± 0.6
BRP-19 (ISFSI-SW)	12.6 ± 0.6	16.9 ± 1.5	13.5 ± 1.1	12.6 ± 0.5
BRP-20 (ISFSI-SE)	13.4 ± 0.6	16.4 ± 1.5	14.8 ± 1.2	20.0 ± 1.2
BRP-21 (ISFSI-NE)	10.4 ± 0.6	14.3 ± 1.4	10.5 ± 1.1	40.4 ± 1.5
BRP-22 (ISFSI-FNE)	16.7 ± 1.0	20.9 ± 1.6	15.8 ± 1.2	23.3 ± 0.9
BRP-23 (ISFSI-FSE)	32.8 ± 1.0	38.7 ± 3.3	33.3 ± 2.8	19.1 ± 0.7
BRP-24 (ISFSI-FSW)	19.0 ± 0.8	22.8 ± 1.5	18.7 ± 1.2	7.3 ± 0.6
BRP-25 (ISFSI-FNW)	15.5 ± 0.8	20.1 ± 1.5	15.2 ± 1.2	6.8 ± 0.5

^a Intransit exposure has been subtracted.

BIG ROCK

Table 2. Gamma radiation, as measured by TLDs, annual exposure.
Units: mR/365 days^a

	<u>2007</u>
Date Placed	01-03-07
Date Removed	01-02-08
Intransit (mR)	7.4 ± 1.1
BRP-05 (PT) (Control)	50.5 ± 1.7
BRP-06 (BC) (Control)	58.1 ± 3.0
BRP-07 (TR) (Control)	111.4 ± 2.4
BRP-18 (ISFSI-NW)	47.9 ± 1.3
BRP-19 (ISFSI-SW)	59.3 ± 2.9
BRP-20 (ISFSI-SE)	61.2 ± 1.2
BRP-21 (ISFSI-NE)	45.2 ± 2.6
BRP-22 (ISFSI-FNE)	71.8 ± 2.2
BRP-23 (ISFSI-FSE)	165.0 ± 2.9
BRP-24 (ISFSI-FSW)	81.5 ± 1.7
BRP-25 (ISFSI-FNW)	68.7 ± 2.0
Control 1 (Shield)	27.5 ± 1.5
Control 2 (Shield)	27.6 ± 1.5

^a Intransit exposure has been subtracted.

Attachment 4

**Environmental, Inc. Midwest Laboratory EPA
Interlaboratory Comparison Program Results**



APPENDIX A

INTERLABORATORY COMPARISON PROGRAM RESULTS

NOTE: Environmental Inc., Midwest Laboratory participates in intercomparison studies administered by Environmental Resources Associates, and serves as a replacement for studies conducted previously by the U.S. EPA Environmental Monitoring Systems Laboratory, Las Vegas, Nevada. Results are reported in Appendix A. TLD Intercomparison results, in-house spikes, blanks, duplicates and mixed analyte performance evaluation program results are also reported. Appendix A is updated four times a year; the complete Appendix is included in March, June, September and December monthly progress reports only.

January through December, 2007

Appendix A

Interlaboratory Comparison Program Results

Environmental, Inc., Midwest Laboratory has participated in interlaboratory comparison (crosscheck) programs since the formulation of its quality control program in December 1971. These programs are operated by agencies which supply environmental type samples containing concentrations of radionuclides known to the issuing agency but not to participant laboratories. The purpose of such a program is to provide an independent check on a laboratory's analytical procedures and to alert it of any possible problems.

Participant laboratories measure the concentration of specified radionuclides and report them to the issuing agency. Several months later, the agency reports the known values to the participant laboratories and specifies control limits. Results consistently higher or lower than the known values or outside the control limits indicate a need to check the instruments or procedures used.

Results in Table A-1 were obtained through participation in the environmental sample crosscheck program administered by Environmental Resources Associates, serving as a replacement for studies conducted previously by the U.S. EPA Environmental Monitoring Systems Laboratory, Las Vegas, Nevada.

The results in Table A-2 list results for thermoluminescent dosimeters (TLDs), via International Intercomparison of Environmental Dosimeters, when available, and internal laboratory testing.

Table A-3 lists results of the analyses on in-house "spiked" samples for the past twelve months. All samples are prepared using NIST traceable sources. Data for previous years available upon request.

Table A-4 lists results of the analyses on in-house "blank" samples for the past twelve months. Data for previous years available upon request.

Table A-5 lists REMP specific analytical results from the in-house "duplicate" program for the past twelve months. Acceptance is based on the difference of the results being less than the sum of the errors. Complete analytical data for duplicate analyses is available upon request.

The results in Table A-6 were obtained through participation in the Mixed Analyte Performance Evaluation Program.

Results in Table A-7 were obtained through participation in the environmental sample crosscheck program administered by Environmental Resources Associates, serving as a replacement for studies conducted previously by the Environmental Measurement Laboratory Quality Assessment Program (EML).

Attachment A lists acceptance criteria for "spiked" samples.

Out-of-limit results are explained directly below the result.

Attachment A

ACCEPTANCE CRITERIA FOR 'SPIKED' SAMPLES

LABORATORY PRECISION: ONE STANDARD DEVIATION VALUES FOR VARIOUS ANALYSES^a

Analysis	Level	One standard deviation for single determination
Gamma Emitters	5 to 100 pCi/liter or kg > 100 pCi/liter or kg	5.0 pCi/liter 5% of known value
Strontium-89 ^b	5 to 50 pCi/liter or kg > 50 pCi/liter or kg	5.0 pCi/liter 10% of known value
Strontium-90 ^b	2 to 30 pCi/liter or kg > 30 pCi/liter or kg	5.0 pCi/liter 10% of known value
Potassium-40	≥ 0.1 g/liter or kg	5% of known value
Gross alpha	≤ 20 pCi/liter > 20 pCi/liter	5.0 pCi/liter 25% of known value
Gross beta	≤ 100 pCi/liter > 100 pCi/liter	5.0 pCi/liter 5% of known value
Tritium	≤ 4,000 pCi/liter > 4,000 pCi/liter	± 1σ = 169.85 x (known) ^{0.0933} 10% of known value
Radium-226,-228	≥ 0.1 pCi/liter	15% of known value
Plutonium	≥ 0.1 pCi/liter, gram or sample	10% of known value
Iodine-131, Iodine-129 ^b	≤ 55 pCi/liter > 55 pCi/liter	6.0 pCi/liter 10% of known value
Uranium-238, Nickel-63 ^b Technetium-99 ^b	≤ 35 pCi/liter > 35 pCi/liter	6.0 pCi/liter 15% of known value
Iron-55 ^b	50 to 100 pCi/liter > 100 pCi/liter	10 pCi/liter 10% of known value
Others ^b	---	20% of known value

^a From EPA publication, 'Environmental Radioactivity Laboratory Intercomparison Studies Program, Fiscal Year, 1981-1982, EPA-600/4-81-004

^b Laboratory limit.

TABLE A-1. Interlaboratory Comparison Crosscheck program, Environmental Resource Associates (ERA)^a.

Lab Code	Date	Analysis	Concentration (pCi/L)				Acceptance
			Laboratory Result ^b	ERA Result ^c	Control Limits		
STW-1121	04/09/07	Sr-89	30.7 ± 4.3	35.4	26.7 - 44.1	Pass	
STW-1121	04/09/07	Sr-90	39.3 ± 1.8	42.1	33.4 - 50.8	Pass	
STW-1122	04/09/07	Ba-133	30.0 ± 2.4	29.3	20.6 - 38.0	Pass	
STW-1122	04/09/07	Co-60	118.5 ± 3.9	119.0	109.0 - 129.0	Pass	
STW-1122	04/09/07	Cs-134	52.6 ± 2.3	54.3	45.6 - 63.0	Pass	
STW-1122	04/09/07	Cs-137	49.5 ± 3.8	50.3	41.6 - 59.0	Pass	
STW-1122	04/09/07	Zn-85	91.7 ± 6.3	88.6	73.3 - 104.0	Pass	
STW-1123	04/09/07	Gr. Alpha	33.8 ± 3.5	56.5	32.0 - 81.0	Pass	
STW-1123	04/09/07	Gr. Beta	24.2 ± 2.3	25.3	16.6 - 34.0	Pass	
STW-1124	04/09/07	I-131	19.2 ± 1.2	18.9	13.7 - 24.1	Pass	
STW-1125	04/09/07	H-3	7540.0 ± 255.0	8060.0	6660.0 - 9450.0	Pass	
STW-1125	04/09/07	Ra-226	13.0 ± 0.6	13.4	9.9 - 16.9	Pass	
STW-1125	04/09/07	Ra-228	19.9 ± 2.7	18.2	10.3 - 26.1	Pass	
STW-1125	04/09/07	Uranium	4.5 ± 0.2	4.6	0.0 - 9.8	Pass	
STW-1127	07/09/07	Sr-89	51.7 ± 5.0	58.2	49.5 - 66.9	Pass	
STW-1127	07/09/07	Sr-90	21.4 ± 2.3	19.0	10.3 - 27.7	Pass	
STW-1128	07/09/07	Ba-133	19.4 ± 2.2	19.4	10.7 - 28.1	Pass	
STW-1128	07/09/07	Co-60	32.8 ± 2.0	33.5	24.8 - 42.2	Pass	
STW-1128	07/09/07	Cs-134	67.0 ± 2.9	68.9	60.2 - 77.6	Pass	
STW-1128	07/09/07	Cs-137	61.6 ± 3.8	61.3	52.6 - 70.0	Pass	
STW-1128	07/09/07	Zn-65	55.6 ± 7.5	54.6	45.2 - 64.0	Pass	
STW-1129	07/09/07	Gr. Alpha	19.2 ± 1.6	27.1	15.4 - 38.8	Pass	
STW-1129	07/09/07	Gr. Beta	9.1 ± 0.9	11.5	2.8 - 20.2	Pass	
STW-1130	07/09/07	Ra-226	7.0 ± 0.5	7.7	5.7 - 9.7	Pass	
STW-1130	07/09/07	Ra-228	9.2 ± 2.3	9.1	5.2 - 13.1	Pass	
STW-1130	07/09/07	Uranium	23.9 ± 1.1	25.1	19.9 - 30.3	Pass	
STW-1131	10/05/07	Sr-89	27.3 ± 3.3	27.4	19.3 - 33.9	Pass	
STW-1131	10/05/07	Sr-90	17.7 ± 1.2	18.2	12.9 - 21.6	Pass	
STW-1132	10/05/07	Ba-133	12.2 ± 3.3	12.6	8.6 - 15.5	Pass	
STW-1132	10/05/07	Co-60	23.8 ± 1.4	23.2	19.9 - 28.3	Pass	
STW-1132	10/05/07	Cs-134	70.5 ± 4.2	71.1	58.0 - 78.2	Pass	
STW-1132	10/05/07	Cs-137	178.2 ± 3.3	180.0	162.0 - 200.0	Pass	
STW-1132	10/05/07	Zn-65	263.9 ± 6.9	251.0	226.0 - 294.0	Pass	
STW-1133	10/05/07	Gr. Alpha	54.7 ± 2.1	58.6	30.6 - 72.9	Pass	
STW-1133	10/05/07	Gr. Beta	11.9 ± 0.9	9.7	4.3 - 18.2	Pass	
STW-1134	10/05/07	I-131	33.0 ± 1.5	28.9	24.0 - 33.8	Pass	
STW-1135	10/05/07	H-3	9965.0 ± 250.0	9700.0	8430.0 - 10700.0	Pass	
STW-1135	10/05/07	Ra-226	12.7 ± 0.2	12.9	9.6 - 14.9	Pass	
STW-1135	10/05/07	Ra-228	19.6 ± 2.4	17.9	12.0 - 21.5	Pass	
STW-1135	10/05/07	Uranium	27.3 ± 1.1	27.5	22.1 - 30.8	Pass	

^a Results obtained by Environmental, Inc., Midwest Laboratory as a participant in the crosscheck program for proficiency testing in drinking water conducted by Environmental Resources Associates (ERA).

^b Unless otherwise indicated, the laboratory result is given as the mean ± standard deviation for three determinations.

^c Results are presented as the known values, expected laboratory precision (1 sigma, 1 determination) and control limits as provided by ERA.

TABLE A-2. Crosscheck program results; Thermoluminescent Dosimetry, (TLD, CaSO₄; Dy Cards).

Lab Code	Date	Description	mR			Acceptance
			Known Value	Lab Result ± 2 sigma	Control Limits	
<u>Environmental, Inc.</u>						
2007-1	7/13/2007	30 cm.	54.25	60.56 ± 5.54	37.98 - 70.53	Pass
2007-1	7/13/2007	40 cm.	30.51	34.23 ± 0.96	21.36 - 39.66	Pass
2007-1	7/13/2007	50 cm.	19.53	17.95 ± 1.86	13.67 - 25.39	Pass
2007-1	7/13/2007	60 cm.	13.56	16.61 ± 0.60	9.49 - 17.63	Pass
2007-1	7/13/2007	70 cm.	9.96	9.72 ± 0.90	6.97 - 12.95	Pass
2007-1	7/13/2007	80 cm.	7.63	7.79 ± 0.33	5.34 - 9.92	Pass
2007-1	7/13/2007	90 cm.	6.03	5.53 ± 0.72	4.22 - 7.84	Pass
2007-1	7/13/2007	100 cm.	4.88	5.32 ± 0.17	3.42 - 6.34	Pass
2007-1	7/13/2007	110 cm.	4.03	3.49 ± 0.14	2.82 - 5.24	Pass
2007-1	7/13/2007	120 cm.	3.39	2.64 ± 0.14	2.37 - 4.41	Pass
2007-1	7/13/2007	150 cm.	2.17	2.13 ± 0.87	1.52 - 2.82	Pass
<u>Environmental, Inc.</u>						
2007-2	11/12/2007	30 cm.	54.37	65.47 ± 5.25	38.06 - 70.68	Pass
2007-2	11/12/2007	40 cm.	30.59	37.43 ± 2.18	21.41 - 39.77	Pass
2007-2	11/12/2007	60 cm.	13.59	15.18 ± 0.50	9.51 - 17.67	Pass
2007-2	11/12/2007	70 cm.	9.99	12.18 ± 0.46	6.99 - 12.99	Pass
2007-2	11/12/2007	80 cm.	7.65	8.74 ± 0.39	5.36 - 9.95	Pass
2007-2	11/12/2007	90 cm.	6.04	5.89 ± 0.25	4.23 - 7.85	Pass
2007-2	11/12/2007	110 cm.	4.04	4.13 ± 0.41	2.83 - 5.25	Pass
2007-2	11/12/2007	120 cm.	3.4	2.92 ± 0.13	2.38 - 4.42	Pass
2007-2	11/12/2007	120 cm.	3.4	2.91 ± 0.31	2.38 - 4.42	Pass
2007-2	11/12/2007	150 cm.	2.17	1.95 ± 0.72	1.52 - 2.82	Pass
2007-2	11/12/2007	180 cm.	1.51	1.38 ± 0.05	1.06 - 1.98	Pass

TABLE A-3. In-House "Spike" Samples

Lab Code ^b	Date	Analysis	Concentration (pCi/L) ^a			Acceptance
			Laboratory results 2s, n=1 ^c	Known Activity	Control Limits ^c	
W-30707	3/7/2007	Gr. Alpha	19.51 ± 0.40	20.08	10.04 - 30.12	Pass
W-30707	3/7/2007	Gr. Beta	67.45 ± 0.49	65.73	55.73 - 75.73	Pass
SPAP-1566	3/23/2007	Cs-134	25.35 ± 1.31	27.82	17.82 - 37.82	Pass
SPAP-1566	3/23/2007	Cs-137	107.52 ± 3.02	116.48	104.83 - 128.13	Pass
SPW-1568	3/23/2007	H-3	65595.00 ± 672.00	71118.00	56894.40 - 85341.60	Pass
SPW-1678	3/28/2007	Tc-99	28.44 ± 1.12	32.35	20.35 - 44.35	Pass
SPW-1595	4/5/2007	Cs-134	54.48 ± 2.12	54.99	44.99 - 64.99	Pass
SPW-1595	4/5/2007	Cs-137	59.03 ± 2.94	58.19	48.19 - 68.19	Pass
SPW-1595	4/5/2007	I-131(G)	83.11 ± 3.51	82.07	72.07 - 92.07	Pass
SPW-1595A	4/5/2007	I-131	78.40 ± 1.10	82.07	65.66 - 98.48	Pass
SPW-1595B	4/5/2007	I-131	78.97 ± 1.10	82.07	65.66 - 98.48	Pass
SPMI-1597	4/5/2007	Cs-134	54.03 ± 2.15	54.99	44.99 - 64.99	Pass
SPMI-1597	4/5/2007	Cs-137	59.81 ± 4.75	58.19	48.19 - 68.19	Pass
SPMI-1597	4/5/2007	I-131(G)	83.97 ± 4.07	82.07	72.07 - 92.07	Pass
SPMI-1597A	4/5/2007	I-131	79.53 ± 1.03	82.07	65.66 - 98.48	Pass
SPMI-1597B	4/5/2007	I-131	83.51 ± 1.05	82.07	65.66 - 98.48	Pass
SPCH-2839	5/17/2007	I-131(G)	78.70 ± 7.36	70.40	60.40 - 80.40	Pass
SPW-2847	5/17/2007	Cs-134	55.43 ± 1.68	52.85	42.85 - 62.85	Pass
SPW-2847	5/17/2007	Cs-137	59.86 ± 2.71	58.03	48.03 - 68.03	Pass
SPW-2847	5/17/2007	I-131(G)	63.95 ± 2.69	70.87	60.87 - 80.87	Pass
SPMI-2849	5/17/2007	Cs-134	51.37 ± 1.65	52.85	42.85 - 62.85	Pass
SPMI-2849	5/17/2007	Cs-137	60.42 ± 4.31	58.03	48.03 - 68.03	Pass
SPMI-2849	5/17/2007	I-131(G)	82.44 ± 3.14	70.87	60.87 - 80.87	Pass
SPCH-2922	5/17/2007	I-131(G)	80.00 ± 6.40	70.40	41.60 - 99.20	Pass
SPW-2847	5/18/2007	I-131	60.14 ± 0.89	70.87	56.70 - 85.04	Pass
SPW-2847	5/18/2007	Sr-89	104.93 ± 6.64	121.90	97.52 - 146.28	Pass
SPW-2847	5/18/2007	Sr-89	46.72 ± 1.97	46.08	36.08 - 56.08	Pass
SPMI-2849	5/18/2007	I-131	67.97 ± 0.88	70.87	56.70 - 85.04	Pass
SPW-2909 ^a	5/22/2007	Fe-55	11137.00 ± 316.00	14271.50	11417.20 - 17125.80	Fail
SPW-2911	5/22/2007	H-3	65023.00 ± 679.00	70485.00	56388.00 - 84582.00	Pass
SPAP-2913	5/22/2007	Gr. Beta	55.27 ± 8.51	52.65	42.12 - 73.71	Pass
SPAP-2915	5/22/2007	Cs-134	22.53 ± 1.12	26.42	16.42 - 36.42	Pass
SPAP-2915	5/22/2007	Cs-137	111.14 ± 3.57	116.06	104.45 - 127.67	Pass
SPF-2922	5/22/2007	Cs-134	0.52 ± 0.03	0.53	0.32 - 0.74	Pass
SPF-2922	5/22/2007	Cs-137	2.58 ± 0.07	2.32	1.39 - 3.25	Pass
SPW-3223	5/24/2007	Ni-63	2233.10 ± 10.32	2135.90	1281.54 - 2990.26	Pass
W-80507	6/5/2007	Gr. Alpha	20.93 ± 0.42	20.08	10.04 - 30.12	Pass
W-80507	6/5/2007	Gr. Beta	60.50 ± 0.46	65.73	55.73 - 75.73	Pass
SPW-4327	7/19/2007	Tc-99	25.58 ± 1.11	32.35	20.35 - 44.35	Pass
SPW-5476	8/17/2007	Ni-63	1925.18 ± 9.62	2135.90	1281.54 - 2990.26	Pass
W-92107	9/21/2007	Gr. Alpha	23.02 ± 0.44	20.08	10.04 - 30.12	Pass
W-92107	9/21/2007	Gr. Beta	61.48 ± 0.47	65.73	55.73 - 75.73	Pass

TABLE A-3. In-House "Spike" Samples

Lab Code	Date	Analysis	Concentration (pCi/L) ^a			Acceptance
			Laboratory results 2s, n=1 ^b	Known Activity	Control Limits ^c	
SPW-6880	10/10/2007	Tc-99	30.97 ± 1.21	32.35	20.35 - 44.35	Pass
w-111007	11/10/2007	Gr. Alpha	22.43 ± 0.42	20.08	10.04 - 30.12	Pass
w-111007	11/10/2007	Gr. Beta	64.49 ± 0.48	65.73	55.73 - 75.73	Pass
SPAP-7742	11/13/2007	Cs-134	21.18 ± 1.29	22.41	12.41 - 32.41	Pass
SPAP-7742	11/13/2007	Cs-137	113.61 ± 3.16	114.76	103.26 - 126.24	Pass
SPAP-7744	11/13/2007	Gr. Beta	53.41 ± 0.13	52.03	41.62 - 72.84	Pass
SPMI-7746	11/13/2007	Cs-134	42.20 ± 1.48	44.83	34.83 - 54.83	Pass
SPMI-7746	11/13/2007	Cs-137	56.05 ± 2.83	57.40	47.40 - 67.40	Pass
SPMI-7746	11/13/2007	Sr-90	41.02 ± 1.61	45.54	36.43 - 54.65	Pass
SPW-7748	11/13/2007	Cs-134	43.11 ± 1.52	44.80	34.80 - 54.80	Pass
SPW-7748	11/13/2007	Cs-137	59.28 ± 3.50	57.40	47.40 - 67.40	Pass
SPW-7748	11/13/2007	Sr-90	37.23 ± 1.51	45.54	36.43 - 54.65	Pass
SPW-7752	11/13/2007	Fe-55	12935.10 ± 357.00	12640.50	10112.40 - 15168.60	Pass
SPW-7758	11/13/2007	H-3	65405.00 ± 712.50	68618.00	54894.40 - 82341.60	Pass
SPF-7760	11/13/2007	Cs-134	0.45 ± 0.02	0.45	0.27 - 0.63	Pass
SPF-7760	11/13/2007	Cs-137	2.45 ± 0.07	2.29	1.37 - 3.21	Pass
SPW-8034	11/13/2007	Ni-63	2194.06 ± 10.77	2129.03	1277.42 - 2980.64	Pass

^a Liquid sample results are reported in pCi/Liter, air filters (pCi/filter), charcoal (pCi/m³), and solid samples (pCi/g).

^b Laboratory codes as follows: W (water), MI (milk), AP (air filter), SO (soil), VE (vegetation).

CH (charcoal canister), F (fish).

^c Results are based on single determinations.

^d Control limits are based on Attachment A, Page A2 of this report.

* Sample recount: 12557 ± 335.

NOTE: For fish, Jello is used for the Spike matrix. For Vegetation, cabbage is used for the Spike matrix.

TABLE A-4. In-House "Blank" Samples

Lab Code	Sample Type	Date	Analysis ^a	Concentration (pCi/L) ^b		
				Laboratory results (4.66σ)		Acceptance Criteria (4.66 σ)
				LLD	Activity ^c	
W-30707	water	3/7/2007	Gr. Alpha	0.40	0.01 ± 0.28	2
W-30707	water	3/7/2007	Gr. Beta	0.75	0.06 ± 0.53	4
SPAP-1567	Air Filter	3/23/2007	Cs-134	0.79		100
SPW-1567	Air Filter	3/23/2007	Cs-137	1.01		100
SPW-1568	water	3/23/2007	H-3	178.10	-26.16 ± 91.62	200
SPW-1596	water	4/5/2007	Cs-134	3.28		10
SPW-1596	water	4/5/2007	Cs-137	3.45		10
SPW-1596	water	4/5/2007	I-131	0.27	0.02 ± 0.18	0.5
SPW-1596	water	4/5/2007	I-131(G)	2.91		20
SPMI-1598	Milk	4/5/2007	Cs-134	3.30		10
SPMI-1598	Milk	4/5/2007	Cs-137	5.08		10
SPMI-1598	Milk	4/5/2007	I-131	0.26	-0.10 ± 0.17	0.5
SPMI-1598	Milk	4/5/2007	I-131(G)	4.10		20
SPCH-2839	Charcoal Canister	5/17/2007	I-131(G)	2.24		9.6
SPW-2848	water	5/17/2007	Cs-134	3.14		10
SPW-2848	water	5/17/2007	Cs-137	1.37		10
SPW-2848	water	5/17/2007	I-131(G)	5.34		20
SPMI-2850	Milk	5/17/2007	Cs-134	3.32		10
SPMI-2850	Milk	5/17/2007	Cs-137	2.60		10
SPMI-2850	Milk	5/17/2007	I-131(G)	4.77		20
SPW-2848	water	5/18/2007	I-131	0.34	-0.06 ± 0.19	0.5
SPW-2848	water	5/18/2007	Sr-89	0.81	-0.02 ± 0.65	5
SPW-2848	water	5/18/2007	Sr-90	0.53	0.01 ± 0.25	1
SPMI-2850	Milk	5/18/2007	I-131	0.45	0.20 ± 0.26	0.5
SPMI-2850	Milk	5/18/2007	Sr-89	0.96	-0.73 ± 1.02	5
SPMI-2850 ^d	Milk	5/18/2007	Sr-90	0.58	0.96 ± 0.38	1
SPAP-2914	Air Filter	5/22/2007	Gr. Beta	0.004	-0.002 ± 0.002	0.01
SPAP-2916	Air Filter	5/22/2007	Cs-134	2.84		100
SPAP-2916	Air Filter	5/22/2007	Cs-137	2.24		100
SPF-2923	Fish	5/22/2007	Cs-134	8.71		100
SPF-2923	Fish	5/22/2007	Cs-137	8.35		100
SPW-3224	water	5/24/2007	Ni-63	1.61	-0.30 ± 0.84	20
W-60507	water	6/5/2007	Gr. Alpha	0.43	-0.01 ± 0.30	2
W-60507	water	6/5/2007	Gr. Beta	0.77	0.01 ± 0.54	4
SPW-4328	water	7/18/2007	Tc-99	6.41	-3.12 ± 3.84	10
SPW-5477	water	8/17/2007	Ni-63	1.48	4.38 ± 1.01	20
W-92107	water	9/21/2007	Gr. Alpha	0.41	0.09 ± 0.29	2
W-92107	water	9/21/2007	Gr. Beta	0.75	-0.26 ± 0.51	4

TABLE A-4. In-House "Blank" Samples

Lab Code	Sample Type	Date	Analysis ^b	Concentration (pCi/L) ^a		Acceptance Criteria (4.66 σ)
				Laboratory results (4.66 σ)		
				LLD	Activity ^c	
SPW-6881	water	10/10/2007	Tc-99	6.82	-6.58 \pm 4.04	10
SPAP-7743	Air Filter	11/13/2007	Gr. Beta	0.003	-0.002 \pm 0.002	0.01
SPMI-7745	Milk	11/13/2007	Cs-134	2.16		10
SPMI-7745	Milk	11/13/2007	Cs-137	3.46		10
SPMI-7745	Milk	11/13/2007	I-131(G)	5.89		20
SPMI-7745	Milk	11/13/2007	Sr-90	0.59	0.73 \pm 0.35	1
SPW-7747	water	11/13/2007	Cs-134	2.39		10
SPW-7747	water	11/13/2007	Cs-137	3.53		10
SPW-7747	water	11/13/2007	I-131(G)	12.51		20
SPW-7747	water	11/13/2007	Sr-90	0.71	-0.04 \pm 0.32	1
SPW-7751	water	11/13/2007	Fe-55	15.50	-4.18 \pm 9.20	1000
SPW-7757	water	11/13/2007	H-3	151.35	-14.98 \pm 78.85	200
SPF-7759	Fish	11/13/2007	Cs-134	5.50		100
SPF-7759	Fish	11/13/2007	Cs-137	5.10		100
SPW-8033	water	11/13/2007	Ni-63	1.45	-0.19 \pm 0.87	20
W-120607	water	12/6/2007	Gr Alpha	0.40	0.02 \pm 0.28	2
W-120607	water	12/6/2007	Gr Beta	0.77	-0.70 \pm 0.51	4

^a Liquid sample results are reported in pCi/Liter, air filters(pCi/filter), charcoal (pCi/charcoal canister), and solid samples (pCi/kg).

^b I-131(G); iodine-131 as analyzed by gamma spectroscopy.

^c Activity reported is a net activity result. For gamma spectroscopic analysis, activity detected below the LLD value is not reported.

^d Low levels of Sr-90 are still detected in the environment. A concentration of (1-5 pCi/L) in milk is not unusual

TABLE A-5. In-House "Duplicate" Samples

Lab Code	Date	Analysis	Concentration (pCi/L) ^a			Acceptance
			First Result	Second Result	Averaged Result	
E-20, 21	1/2/2007	Gr. Beta	1.76 ± 0.07	1.70 ± 0.06	1.73 ± 0.05	Pass
E-20, 21	1/2/2007	K-40	1.49 ± 0.24	1.57 ± 0.27	1.53 ± 0.18	Pass
CF-41, 42	1/2/2007	Gr. Beta	18.02 ± 0.41	18.81 ± 0.42	18.42 ± 0.29	Pass
CF-41, 42	1/2/2007	K-40	11.68 ± 1.12	12.67 ± 0.97	12.18 ± 0.74	Pass
CF-41, 42	1/2/2007	Sr-90	0.039 ± 0.011	0.026 ± 0.010	0.033 ± 0.007	Pass
P-9516, 9517	1/3/2007	H-3	270.78 ± 91.74	301.18 ± 92.99	285.98 ± 65.31	Pass
LW-9579, 9580	1/4/2007	Gr. Beta	0.91 ± 0.31	0.93 ± 0.30	0.92 ± 0.22	Pass
DW-70085, 70086	1/9/2007	Gr. Alpha	7.95 ± 1.20	7.92 ± 1.42	7.94 ± 0.93	Pass
DW-70037, 70038	1/11/2007	Gr. Alpha	55.47 ± 3.99	52.87 ± 4.02	54.17 ± 2.83	Pass
DW-70054, 70055	1/18/2007	Gr. Alpha	2.68 ± 0.88	1.88 ± 0.78	2.28 ± 0.59	Pass
DW-70122, 70123	1/18/2007	Gr. Alpha	4.30 ± 1.14	6.25 ± 1.16	5.28 ± 0.81	Pass
DW-70122, 70123	1/18/2007	Gr. Beta	4.22 ± 0.70	5.33 ± 0.75	4.78 ± 0.51	Pass
DW-70098, 70099	1/25/2007	Gr. Alpha	3.27 ± 0.90	1.97 ± 0.92	2.62 ± 0.64	Pass
DW-70110, 70111	1/25/2007	Gr. Alpha	2.19 ± 0.92	1.69 ± 0.79	1.94 ± 0.61	Pass
SWU-676, 677	1/30/2007	Gr. Beta	1.77 ± 0.39	2.11 ± 0.39	1.94 ± 0.28	Pass
DW-70148, 70149	1/30/2007	Gr. Alpha	4.65 ± 1.37	5.20 ± 1.81	4.93 ± 1.14	Pass
SW-600, 601	2/1/2007	K-40	1.24 ± 0.12	1.20 ± 0.12	1.22 ± 0.08	Pass
SW-601, 602	2/1/2007	Gr. Beta	0.89 ± 0.37	1.02 ± 0.25	0.96 ± 0.22	Pass
DW-1138, 1139	2/9/2007	H-3	2707.00 ± 161.00	2700.00 ± 161.00	2703.50 ± 113.84	Pass
Mi-721, 722	2/13/2007	K-40	1330.40 ± 117.60	1316.40 ± 116.50	1323.40 ± 82.77	Pass
SW-847, 848	2/13/2007	Gr. Alpha	3.82 ± 1.67	2.61 ± 1.24	3.22 ± 1.04	Pass
SW-847, 848	2/13/2007	Gr. Beta	7.33 ± 1.37	5.89 ± 0.90	6.61 ± 0.82	Pass
DW-70175, 70176	2/14/2007	Gr. Alpha	11.72 ± 1.88	8.84 ± 1.32	10.28 ± 1.07	Pass
DW-70187, 70188	2/14/2007	Gr. Alpha	6.79 ± 1.18	6.47 ± 1.08	6.63 ± 0.80	Pass
SWU-1162, 1163	2/27/2007	Gr. Beta	3.63 ± 0.69	2.61 ± 0.44	3.12 ± 0.41	Pass
DW-70205, 70206	2/28/2007	Gr. Alpha	0.88 ± 0.80	1.31 ± 0.79	1.10 ± 0.56	Pass
PW-1117, 1118	3/1/2007	Gr. Alpha	3.79 ± 1.91	3.62 ± 2.09	3.71 ± 1.42	Pass
PW-1117, 1118	3/1/2007	Gr. Beta	7.12 ± 1.40	7.20 ± 1.39	7.16 ± 0.99	Pass
W-2122, 2123	3/5/2007	Gr. Alpha	6.10 ± 4.16	3.80 ± 4.30	4.95 ± 2.99	Pass
W-2122, 2123	3/5/2007	Gr. Beta	10.65 ± 2.15	13.11 ± 2.42	11.88 ± 1.62	Pass
W-2085, 2086	3/6/2007	Gr. Alpha	2.51 ± 2.29	1.10 ± 2.78	1.81 ± 1.80	Pass
W-2085, 2086	3/6/2007	Gr. Beta	11.02 ± 1.85	9.50 ± 2.01	10.26 ± 1.37	Pass
DW-70232, 70233	3/8/2007	Gr. Alpha	4.75 ± 1.28	5.98 ± 1.31	5.37 ± 0.92	Pass
WW-1477, 1478	3/12/2007	Gr. Beta	6.41 ± 1.48	4.10 ± 1.25	5.26 ± 0.97	Pass
WW-1498, 1499	3/15/2007	Gr. Beta	0.83 ± 0.31	0.97 ± 0.33	0.90 ± 0.22	Pass
W-2140, 2141	3/19/2007	Gr. Alpha	2.31 ± 1.57	1.33 ± 1.64	1.82 ± 1.14	Pass
W-2140, 2141	3/19/2007	Gr. Beta	4.26 ± 1.00	5.58 ± 1.02	4.92 ± 0.71	Pass
DW-1626, 1627	3/21/2007	H-3	4973.00 ± 209.00	5190.00 ± 213.00	5081.50 ± 149.21	Pass
Mi-1647, 1648	3/21/2007	K-40	1448.80 ± 120.20	1439.30 ± 126.00	1444.05 ± 87.07	Pass
DW-70248, 70249	3/21/2007	Gr. Alpha	11.10 ± 1.18	9.90 ± 1.16	10.50 ± 0.83	Pass
W-2150, 2151	3/26/2007	Gr. Alpha	3.56 ± 2.20	3.30 ± 1.81	3.43 ± 1.42	Pass
W-2150, 2151	3/26/2007	Gr. Beta	9.26 ± 1.00	10.17 ± 1.90	9.72 ± 1.07	Pass
LW-1941, 1942	3/31/2007	Gr. Beta	1.35 ± 0.43	1.36 ± 0.41	1.36 ± 0.30	Pass

TABLE A-5. In-House "Duplicate" Samples

Lab Code	Date	Analysis	Concentration (pCi/L) ^a			Acceptance
			First Result	Second Result	Averaged Result	
MI-1824, 1825	4/2/2007	K-40	1316.10 ± 110.60	1229.80 ± 110.50	1272.95 ± 78.17	Pass
MI-1824, 1825	4/2/2007	Sr-90	1.20 ± 0.50	1.10 ± 0.36	1.15 ± 0.31	Pass
AP-2170, 2171	4/2/2007	Be-7	0.08 ± 0.01	0.08 ± 0.01	0.08 ± 0.01	Pass
WW-1850, 1851	4/3/2007	H-3	-5.83 ± 102.29	150.05 ± 80.14	72.11 ± 64.97	Pass
AP-2198, 2199	4/3/2007	Be-7	0.08 ± 0.01	0.08 ± 0.01	0.08 ± 0.01	Pass
AP-2370, 2371	4/3/2007	Be-7	0.07 ± 0.01	0.07 ± 0.01	0.07 ± 0.01	Pass
DW-70300, 70301	4/4/2007	Gr. Alpha	3.78 ± 0.89	3.66 ± 0.96	3.72 ± 0.65	Pass
DW-70300, 70301	4/4/2007	Gr. Beta	2.93 ± 0.61	2.91 ± 0.64	2.92 ± 0.44	Pass
DW-70335, 70336	4/5/2007	Gr. Alpha	24.37 ± 2.89	22.72 ± 2.91	23.55 ± 2.05	Pass
DW-70335, 70336	4/5/2007	Gr. Beta	20.26 ± 1.37	18.33 ± 1.34	19.30 ± 0.96	Pass
SW-1898, 1899	4/10/2007	Gr. Alpha	3.86 ± 1.40	4.78 ± 1.51	4.32 ± 1.03	Pass
SW-1898, 1899	4/10/2007	Gr. Beta	6.31 ± 1.36	7.03 ± 1.42	6.67 ± 0.98	Pass
SW-1898, 1899	4/10/2007	H-3	241.99 ± 93.35	318.10 ± 96.48	280.04 ± 67.12	Pass
DW-70346, 70347	4/11/2007	Gr. Alpha	1.83 ± 1.08	2.54 ± 1.04	2.19 ± 0.75	Pass
DW-70346, 70347	4/11/2007	Gr. Beta	4.62 ± 0.72	4.01 ± 0.71	4.32 ± 0.51	Pass
DW-70376, 70377	4/11/2007	Gr. Alpha	1.81 ± 0.80	1.66 ± 0.86	1.74 ± 0.59	Pass
DW-70376, 70377	4/11/2007	Gr. Beta	1.84 ± 0.62	2.24 ± 0.61	2.04 ± 0.44	Pass
DW-70311, 70312	4/12/2007	Gr. Alpha	10.82 ± 1.50	13.20 ± 1.56	12.01 ± 1.08	Pass
WW-2349, 2350	4/17/2007	Gr. Alpha	0.71 ± 0.56	0.62 ± 0.52	0.66 ± 0.38	Pass
WW-2461, 2462	4/25/2007	H-3	190.30 ± 100.31	115.95 ± 97.65	153.13 ± 70.00	Pass
LW-2437, 2438	4/26/2007	Gr. Beta	2.71 ± 0.50	2.15 ± 0.45	2.43 ± 0.34	Pass
LW-2917, 2918	4/30/2007	Gr. Beta	1.97 ± 0.79	2.78 ± 0.81	2.38 ± 0.57	Pass
SO-2583, 2584	5/1/2007	Be-7	544.99 ± 247.70	601.13 ± 192.20	573.06 ± 156.76	Pass
SO-2583, 2584	5/1/2007	Cs-137	119.22 ± 36.61	87.46 ± 23.97	103.34 ± 21.88	Pass
SO-2583, 2584	5/1/2007	K-40	17825.00 ± 749.90	17672.00 ± 724.30	17748.50 ± 521.29	Pass
SO-2583, 2584	5/1/2007	Gr. Alpha	11.49 ± 3.96	8.04 ± 3.88	9.77 ± 2.77	Pass
SO-2583, 2584	5/1/2007	Gr. Beta	31.02 ± 3.74	26.10 ± 3.40	28.56 ± 2.53	Pass
SO-2583, 2584	5/1/2007	Sr-90	0.086 ± 0.024	0.068 ± 0.025	0.077 ± 0.017	Pass
S-2620, 2621	5/2/2007	H-3	277.90 ± 126.70	304.40 ± 101.00	291.15 ± 81.02	Pass
MI-2610, 2611	5/3/2007	K-40	1549.20 ± 184.20	1388.80 ± 128.20	1469.00 ± 112.21	Pass
W-4469, 4470	5/7/2007	Gr. Beta	10.60 ± 1.90	11.10 ± 1.80	10.85 ± 1.31	Pass
SS-2697, 2698	5/8/2007	Cs-137	0.06 ± 0.02	0.05 ± 0.03	0.05 ± 0.02	Pass
SS-2697, 2698	5/8/2007	K-40	8.03 ± 0.57	7.36 ± 0.68	7.70 ± 0.44	Pass
MI-2790, 2791	5/14/2007	K-40	1694.30 ± 126.20	1627.60 ± 128.80	1660.95 ± 90.16	Pass
W-4505, 4506	5/14/2007	Gr. Beta	3.30 ± 1.70	3.90 ± 1.50	3.60 ± 1.13	Pass
DW-3219, 3220	5/26/2007	I-131	0.62 ± 0.32	0.69 ± 0.31	0.66 ± 0.22	Pass
SO-3416, 3417	5/31/2007	Cs-137	0.15 ± 0.03	0.15 ± 0.03	0.15 ± 0.02	Pass
SO-3416, 3417	5/31/2007	Gr. Beta	22.88 ± 2.33	22.46 ± 2.37	22.67 ± 1.66	Pass
SO-3416, 3417	5/31/2007	K-40	12.26 ± 0.80	12.36 ± 0.65	12.31 ± 0.52	Pass
F-3561, 3562	5/31/2007	K-40	3.06 ± 0.39	3.37 ± 0.45	3.21 ± 0.30	Pass
SL-3311, 3312	6/4/2007	Be-7	0.61 ± 0.29	0.55 ± 0.25	0.58 ± 0.19	Pass
SL-3311, 3312	6/4/2007	K-40	5.78 ± 0.67	4.87 ± 0.25	5.33 ± 0.36	Pass

TABLE A-5. In-House "Duplicate" Samples

Lab Code	Date	Analysis	Concentration (pCi/L) ^a			Acceptance
			First Result	Second Result	Averaged Result	
SL-3992, 3993	6/4/2007	Be-7	0.75 ± 0.19	0.74 ± 0.32	0.75 ± 0.19	Pass
SL-3992, 3993	6/4/2007	Gr. Beta	13.61 ± 1.12	14.06 ± 1.08	13.84 ± 0.78	Pass
SL-3992, 3993	6/4/2007	K-40	2.43 ± 0.36	2.29 ± 0.40	2.36 ± 0.27	Pass
W-5087, 5088	6/11/2007	Gr. Beta	8.70 ± 1.90	7.70 ± 1.90	8.20 ± 1.34	Pass
SW-3710, 3711	6/14/2007	H-3	9571.51 ± 287.22	9879.21 ± 291.42	9725.36 ± 204.59	Pass
W-4062, 4063	6/28/2007	Gr. Alpha	0.76 ± 0.63	0.32 ± 0.66	0.54 ± 0.45	Pass
W-4062, 4063	6/28/2007	Gr. Beta	0.97 ± 0.53	0.58 ± 0.57	0.78 ± 0.39	Pass
AP-4448, 4449	6/28/2007	Be-7	0.10 ± 0.02	0.09 ± 0.02	0.10 ± 0.01	Pass
SG-3735, 3736	6/30/2007	Be-7	0.84 ± 0.12	0.82 ± 0.18	0.83 ± 0.11	Pass
SG-3735, 3736	6/30/2007	Cs-137	0.07 ± 0.01	0.07 ± 0.01	0.07 ± 0.01	Pass
SG-3735, 3736	6/30/2007	Gr. Beta	29.51 ± 2.22	30.81 ± 2.22	30.16 ± 1.57	Pass
SG-3735, 3736	6/30/2007	K-40	9.41 ± 0.31	8.90 ± 0.48	9.16 ± 0.29	Pass
LW-4175, 4176	6/30/2007	Gr. Beta	2.18 ± 0.60	1.93 ± 0.68	2.06 ± 0.45	Pass
SG-5422, 5423	7/2/2007	Gr. Alpha	10.31 ± 1.98	10.57 ± 1.99	10.44 ± 1.40	Pass
SG-5422, 5423	7/2/2007	Gr. Beta	18.59 ± 1.46	20.97 ± 1.49	19.78 ± 1.04	Pass
AP-4656, 4657	7/3/2007	Be-7	0.09 ± 0.02	0.10 ± 0.02	0.10 ± 0.01	Pass
AP-4763, 4764	7/3/2007	Be-7	0.11 ± 0.02	0.10 ± 0.02	0.11 ± 0.01	Pass
SG-5430, 5431	7/11/2007	Be-7	10.17 ± 0.48	10.06 ± 0.51	10.12 ± 0.35	Pass
SG-5430, 5431	7/11/2007	Cs-137	0.050 ± 0.010	0.059 ± 0.011	0.055 ± 0.007	Pass
SG-5430, 5431	7/11/2007	Gr. Alpha	17.86 ± 2.78	15.74 ± 2.70	16.80 ± 1.94	Pass
SG-5430, 5431	7/11/2007	Gr. Beta	26.19 ± 1.74	25.04 ± 1.86	25.62 ± 1.27	Pass
SG-5430, 5431	7/11/2007	K-40	7.69 ± 0.30	7.65 ± 0.28	7.67 ± 0.21	Pass
WW-4298, 4299	7/12/2007	Gr. Beta	1.74 ± 0.74	2.22 ± 0.80	1.98 ± 0.55	Pass
DW-70612, 70613	7/23/2007	Gr. Alpha	4.54 ± 1.11	4.19 ± 0.97	4.37 ± 0.74	Pass
WW-4918, 4919	7/25/2007	H-3	240.43 ± 111.12	216.68 ± 110.27	228.56 ± 78.27	Pass
MI-4742, 4743	7/26/2007	K-40	1820.30 ± 134.10	1802.90 ± 199.50	1811.60 ± 120.19	Pass
VE-4939, 4940	8/1/2007	Be-7	0.39 ± 0.21	0.45 ± 0.20	0.42 ± 0.15	Pass
VE-4939, 4940	8/1/2007	Gr. Beta	5.50 ± 0.14	5.76 ± 0.13	5.63 ± 0.10	Pass
VE-4939, 4940	8/1/2007	K-40	3.36 ± 0.45	3.36 ± 0.21	3.36 ± 0.25	Pass
SG-6274, 6275	8/6/2007	Gr. Alpha	16.68 ± 3.29	19.26 ± 3.39	17.97 ± 2.36	Pass
SG-6274, 6275	8/6/2007	Gr. Beta	40.93 ± 2.74	42.42 ± 2.66	41.68 ± 1.91	Pass
SW-5218, 5219	8/7/2007	I-131	1.31 ± 0.24	1.42 ± 0.24	1.37 ± 0.17	Pass
SG-6284, 6285	8/8/2007	Cs-137	0.043 ± 0.006	0.051 ± 0.007	0.047 ± 0.005	Pass
SG-6284, 6285	8/8/2007	Gr. Alpha	9.38 ± 2.93	13.61 ± 3.38	11.50 ± 2.24	Pass
SG-6284, 6285	8/8/2007	Gr. Beta	33.46 ± 2.84	32.87 ± 2.93	33.17 ± 2.04	Pass
SG-6284, 6285	8/8/2007	K-40	16.15 ± 0.24	16.23 ± 0.25	16.19 ± 0.17	Pass
WW-5310, 5311	8/9/2007	H-3	644.00 ± 106.00	831.00 ± 113.00	737.50 ± 77.47	Pass
SW-5393, 5394	8/14/2007	Gr. Beta	2.32 ± 1.31	1.71 ± 1.27	2.02 ± 0.92	Pass
SW-5393, 5394	8/14/2007	H-3	190.06 ± 86.80	69.05 ± 80.88	129.55 ± 69.32	Pass
W-5468, 5469	8/15/2007	H-3	262.58 ± 108.43	346.53 ± 111.42	304.55 ± 77.74	Pass

TABLE A-5. In-House "Duplicate" Samples

Lab Code	Date	Analysis	Concentration (pCi/L) ^a			Acceptance
			First Result	Second Result	Averaged Result	
VE-5553, 5554	8/22/2007	K-40	1.89 ± 0.33	1.89 ± 0.22	1.89 ± 0.20	Pass
WW-5643, 5644	8/22/2007	H-3	259.00 ± 110.00	266.00 ± 110.00	262.50 ± 77.78	Pass
SWU-5799, 5800	8/28/2007	Gr. Beta	2.64 ± 1.18	3.62 ± 1.06	3.13 ± 0.79	Pass
DW-70752, 70753	8/31/2007	Gr. Alpha	14.41 ± 1.48	12.90 ± 1.50	13.66 ± 1.05	Pass
VE-5917, 5918	9/4/2007	Be-7	0.94 ± 0.17	0.83 ± 0.20	0.89 ± 0.13	Pass
VE-5917, 5918	9/4/2007	K-40	3.73 ± 0.37	3.58 ± 0.36	3.66 ± 0.26	Pass
VE-5917, 5918	9/4/2007	Gr. Beta	2.71 ± 0.10	2.69 ± 0.10	2.70 ± 0.07	Pass
MI-6009, 6010	9/11/2007	K-40	1348.90 ± 113.40	1388.10 ± 116.40	1368.50 ± 81.25	Pass
MI-6030, 6031	9/12/2007	K-40	1242.70 ± 118.00	1475.60 ± 119.60	1359.15 ± 84.01	Pass
MI-6030, 6031	9/12/2007	Sr-90	1.00 ± 0.38	0.90 ± 0.34	0.95 ± 0.26	Pass
DW-70718, 70719	9/12/2007	Gr. Alpha	23.04 ± 3.71	23.22 ± 3.61	23.13 ± 2.59	Pass
DW-70718, 70719	9/12/2007	Gr. Beta	16.13 ± 1.59	17.36 ± 1.69	16.75 ± 1.16	Pass
SO-6156, 6157	9/14/2007	H-3	181.99 ± 90.67	232.19 ± 92.95	207.09 ± 64.92	Pass
SO-6484, 6485	9/17/2007	Cs-137	0.01 ± 0.00	0.01 ± 0.00	0.01 ± 0.00	Pass
SO-6484, 6485	9/17/2007	Gr. Beta	24.20 ± 2.60	23.30 ± 2.30	23.75 ± 1.74	Pass
SO-6484, 6485	9/17/2007	K-40	11.52 ± 1.16	10.89 ± 1.10	11.20 ± 0.80	Pass
WW-6469, 6470	9/21/2007	Gr. Beta	27.19 ± 2.51	24.23 ± 2.29	25.71 ± 1.70	Pass
E-6647, 6648	10/1/2007	Gr. Beta	1.82 ± 0.10	1.93 ± 0.11	1.88 ± 0.07	Pass
E-6647, 6648	10/1/2007	K-40	1.48 ± 0.24	1.31 ± 0.23	1.40 ± 0.17	Pass
WW-6656, 6657	10/1/2007	Gr. Beta	2.80 ± 0.97	1.95 ± 0.87	2.38 ± 0.65	Pass
TD-7080, 7081	10/2/2007	H-3	332.00 ± 229.00	383.00 ± 191.00	357.50 ± 149.10	Pass
SG-6891, 6892	10/3/2007	Gr. Alpha	12.93 ± 2.12	13.52 ± 2.07	13.23 ± 1.48	Pass
SG-6891, 6892	10/3/2007	Gr. Beta	18.08 ± 1.41	18.27 ± 1.36	18.18 ± 0.98	Pass
AP-7191, 7192	10/3/2007	Be-7	0.09 ± 0.01	0.09 ± 0.01	0.09 ± 0.01	Pass
WW-6786, 6787	10/8/2007	H-3	13333 ± 322	13532 ± 324	13433 ± 228	Pass
WW-6786, 6787	10/8/2007	H-3	13188 ± 322	13556 ± 326	13372 ± 229	Pass
VE-6828, 6829	10/8/2007	Gr. Alpha	0.06 ± 0.04	0.06 ± 0.05	0.06 ± 0.03	Pass
VE-6828, 6829	10/8/2007	Gr. Beta	5.55 ± 0.21	5.20 ± 0.22	5.38 ± 0.10	Pass
VE-6828, 6829	10/8/2007	K-40	5.45 ± 0.43	5.20 ± 0.49	5.32 ± 0.33	Pass
SS-6870, 6871	10/9/2007	Gr. Beta	18.10 ± 2.08	21.71 ± 2.19	19.90 ± 1.51	Pass
SS-6870, 6871	10/9/2007	K-40	10.19 ± 0.66	9.72 ± 0.68	9.95 ± 0.47	Pass
LW-7507, 7508	10/11/2007	Gr. Beta	1.40 ± 0.56	1.44 ± 0.54	1.42 ± 0.39	Pass
MI-6933, 6934	10/16/2007	K-40	1386.60 ± 104.70	1331.20 ± 106.70	1358.90 ± 74.74	Pass
MI-6933, 6934	10/16/2007	Sr-90	1.73 ± 0.52	2.17 ± 0.57	1.95 ± 0.39	Pass
MI-7059, 7060	10/17/2007	K-40	1424.80 ± 106.60	1448.60 ± 115.30	1436.70 ± 76.51	Pass
F-7213, 7214	10/24/2007	H-3	6.83 ± 0.22	7.24 ± 0.22	7.03 ± 0.16	Pass
F-7213, 7214	10/24/2007	K-40	3.13 ± 0.51	3.16 ± 0.48	3.15 ± 0.35	Pass
WW-7408, 7409	10/24/2007	H-3	340.71 ± 90.45	346.22 ± 90.67	343.46 ± 64.03	Pass
DW-70856, 70857	10/24/2007	Gr. Alpha	11.03 ± 1.66	10.71 ± 1.34	10.87 ± 1.07	Pass
SO-7508, 7509	10/26/2007	Cs-137	0.30 ± 0.04	0.29 ± 0.05	0.29 ± 0.03	Pass
SO-7508, 7509	10/26/2007	Gr. Beta	34.43 ± 2.72	37.25 ± 3.07	35.84 ± 2.05	Pass
SO-7508, 7509	10/26/2007	K-40	16.84 ± 0.84	17.43 ± 1.05	17.14 ± 0.67	Pass

TABLE A-5. In-House "Duplicate" Samples

Lab Code	Date	Analysis	Concentration (pCi/L) ^a		Averaged Result	Acceptance
			First Result	Second Result		
SS-7529, 7530	10/29/2007	Cs-137	0.12 ± 0.03	0.12 ± 0.02	0.12 ± 0.02	Pass
SS-7529, 7530	10/29/2007	K-40	11.85 ± 0.68	11.75 ± 0.58	11.80 ± 0.45	Pass
SW-7589, 7590	10/30/2007	Gr. Beta	1.75 ± 0.29	1.24 ± 0.26	1.50 ± 0.19	Pass
SWU-7733, 7734	10/30/2007	Gr. Beta	1.66 ± 1.01	2.43 ± 1.13	2.05 ± 0.76	Pass
MI-7618, 7619	10/31/2007	K-40	1376.80 ± 114.30	1426.70 ± 128.80	1401.75 ± 86.10	Pass
VE-7666, 7667	11/5/2007	Gr. Alpha	0.07 ± 0.04	0.16 ± 0.05	0.11 ± 0.03	Pass
VE-7666, 7667	11/5/2007	Gr. Beta	6.03 ± 0.15	6.13 ± 0.15	6.08 ± 0.10	Pass
VE-7666, 7667	11/5/2007	K-40	5.82 ± 0.36	5.74 ± 0.36	5.78 ± 0.25	Pass
DW-7853, 7854	11/9/2007	I-131	1.61 ± 0.40	1.08 ± 0.39	1.35 ± 0.28	Pass
MI-7874, 7875	11/14/2007	K-40	1407.70 ± 101.30	1362.60 ± 114.50	1385.15 ± 76.44	Pass
WW-8142, 8143	11/28/2007	Gr. Beta	9.51 ± 2.21	7.86 ± 2.01	8.68 ± 1.49	Pass
DW-8094, 8095	11/29/2007	Gr. Beta	1.60 ± 0.56	1.25 ± 0.54	1.43 ± 0.40	Pass
F-8328, 8329	12/11/2007	Gr. Beta	3.97 ± 0.08	4.00 ± 0.08	3.99 ± 0.05	Pass
WW-8378, 8379	12/11/2007	H-3	296.00 ± 103.00	407.00 ± 107.00	351.50 ± 74.26	Pass

Note: Duplicate analyses are performed on every twentieth sample received in-house. Results are not listed for those analyses with activities that measure below the LLD.

^a Results are reported in units of pCi/L, except for air filters (pCi/Filter), food products, vegetation, soil, sediment (pCi/g).

TABLE A-6. Department of Energy's Mixed Analyte Performance Evaluation Program (MAPEP)^a.

Lab Code ^c	Date	Analysis	Concentration ^b			Acceptance
			Laboratory result	Known Activity	Control Limits ^d	
STW-1110	01/01/07	Gr. Alpha	0.45 ± 0.08	0.33	0.00 - 0.65	Pass
STW-1110	01/01/07	Gr. Beta	0.90 ± 0.14	0.85	0.43 - 1.28	Pass
STW-1111 [*]	01/01/07	Am-241	2.80 ± 0.21	1.71	1.20 - 2.22	Fail
STW-1111	01/01/07	Co-57	151.60 ± 10.00	143.70	100.60 - 186.80	Pass
STW-1111	01/01/07	Cs-134	79.20 ± 8.00	83.50	58.50 - 108.60	Pass
STW-1111	01/01/07	Cs-137	168.70 ± 12.10	163.00	114.10 - 211.90	Pass
STW-1111	01/01/07	Fe-55	130.30 ± 19.90	129.30	90.50 - 168.10	Pass
STW-1111	01/01/07	H-3	282.20 ± 9.10	283.00	198.10 - 367.90	Pass
STW-1111	01/01/07	Mn-54	130.60 ± 11.50	123.80	86.70 - 160.90	Pass
STW-1111	01/01/07	Ni-63	127.80 ± 3.60	130.40	91.30 - 169.50	Pass
STW-1111	01/01/07	Ni-63	127.80 ± 3.60	130.40	91.30 - 169.50	Pass
STW-1111	01/01/07	Pu-238	2.03 ± 0.17	2.25	1.58 - 2.93	Pass
STW-1111	01/01/07	Pu-239/40	2.27 ± 0.17	2.22	1.55 - 2.89	Pass
STW-1111	01/01/07	Sr-90	9.60 ± 1.40	8.87	6.21 - 11.53	Pass
STW-1111	01/01/07	Tc-99	8.80 ± 1.50	88.00	7.40 - 13.70	Pass
STW-1111	01/01/07	U-233/4	2.44 ± 0.21	2.49	1.74 - 3.24	Pass
STW-1111	01/01/07	U-238	2.44 ± 0.21	2.48	1.74 - 3.22	Pass
STW-1111	01/01/07	Zn-65	123.70 ± 17.00	114.80	80.40 - 149.20	Pass
STSO-1112 [†]	01/01/07	Am-241	46.40 ± 9.00	34.80	24.40 - 45.20	Fail
STSO-1112	01/01/07	Co-57	501.20 ± 2.90	471.20	329.80 - 612.60	Pass
STSO-1112	01/01/07	Co-60	285.90 ± 2.10	274.70	192.30 - 357.10	Pass
STSO-1112	01/01/07	Cs-134	325.90 ± 7.40	327.40	229.20 - 425.60	Pass
STSO-1112	01/01/07	Cs-137	855.70 ± 4.60	799.70	559.80 - 1039.60	Pass
STSO-1112	01/01/07	Mn-54	750.90 ± 4.70	685.20	479.60 - 890.80	Pass
STAP-1113	01/01/07	Gr. Alpha	0.27 ± 0.04	0.60	0.00 - 1.20	Pass
STAP-1113	01/01/07	Gr. Beta	0.57 ± 0.05	0.44	0.22 - 0.66	Pass
STAP-1114	01/01/07	Am-241	0.10 ± 0.03	0.10	0.07 - 0.13	Pass
STAP-1114	01/01/07	Co-57	3.51 ± 0.07	2.89	2.02 - 3.75	Pass
STAP-1114	01/01/07	Co-60	2.98 ± 0.10	2.91	2.03 - 3.78	Pass
STAP-1114	01/01/07	Cs-134	4.02 ± 0.16	4.20	2.94 - 5.45	Pass
STAP-1114	01/01/07	Cs-137	2.75 ± 0.12	2.57	1.80 - 3.34	Pass
STAP-1114	01/01/07	Mn-54	3.94 ± 0.12	3.52	2.46 - 4.57	Pass
STAP-1114	01/01/07	Pu-238	0.07 ± 0.01	0.07	0.05 - 0.09	Pass
STAP-1114	01/01/07	Pu-239/40	0.08 ± 0.01	0.08	0.06 - 0.11	Pass
STAP-1114	01/01/07	Sr-90	0.58 ± 0.18	0.61	0.43 - 0.79	Pass
STAP-1114	01/01/07	U-233/4	0.09 ± 0.01	0.10	0.07 - 0.13	Pass
STAP-1114	01/01/07	U-238	0.09 ± 0.01	0.10	0.07 - 0.13	Pass
STAP-1114	01/01/07	Zn-65	2.70 ± 0.10	2.68	1.88 - 3.49	Pass

TABLE A-6. Department of Energy's Mixed Analyte Performance Evaluation Program (MAPEP)^a.

Lab Code ^c	Date	Analysis	Concentration ^b			Acceptance
			Laboratory result	Known Activity	Control Limits ^d	
STVE-1115	01/01/07	Co-57	8.90 ± 0.20	8.19	5.73 - 10.64	Pass
STVE-1115	01/01/07	Co-60	6.50 ± 0.20	5.82	4.08 - 7.57	Pass
STVE-1115	01/01/07	Cs-134	6.90 ± 0.30	6.21	4.35 - 8.07	Pass
STVE-1115	01/01/07	Cs-137	8.20 ± 0.30	6.99	4.90 - 9.09	Pass
STVE-1115	01/01/07	Mn-54	10.10 ± 0.30	8.46	5.91 - 10.98	Pass

^a Results obtained by Environmental, Inc., Midwest Laboratory as a participant in the Department of Energy's Mixed Analyte Performance Evaluation Program, Idaho Operations office, Idaho Falls, Idaho

^b Results are reported in units of Bq/kg (soil), Bq/L (water) or Bq/total sample (filters, vegetation)

^c Laboratory codes as follows: STW (water), STAP (air filter), STSO (soil), STVE (vegetation)

^d MAPEP results are presented as the known values and expected laboratory precision (1 sigma, 1 determination) and control limits as defined by the MAPEP.

^e Result of reanalysis, 2.06 ± 0.13 pCi/L.

^f The test samples were recounted on lower background detectors. Result of the recounts- 41.4 ± 6.3 Bq/kg.

TABLE A-7. Interlaboratory Comparison Crosscheck program, Environmental Resource Associates (ERA)^g.

Lab Code ^b	Date	Analysis	Concentration (pCi/L)		Control Limits	Acceptance
			Laboratory Result ^c	ERA Result ^d		
STAP-1116	03/19/07	Gr. Alpha	34.64 ± 2.56	25.8	12.4 - 39	Pass
STAP-1116	03/19/07	Gr. Beta	93.41 ± 3.20	79.5	48.8 - 116	Pass
STAP-1117	03/19/07	Am-241	56.04 ± 3.90	57.5	33.1 - 80	Pass
STAP-1117	03/19/07	Co-60	1610.00 ± 8.40	1300.0	1010.0 - 1620	Pass
STAP-1117	03/19/07	Cs-134	1340.40 ± 48.84	1120.0	732.0 - 1380	Pass
STAP-1117 ^o	03/19/07	Cs-137	345.30 ± 8.20	255.0	192.0 - 336	Fail
STAP-1117 ^r	03/19/07	Fe-55	< 134.0	0.0		Pass
STAP-1117 ^f	03/19/07	Mn-54	< 5.0	0.0		Pass
STAP-1117	03/19/07	Pu-238	43.32 ± 2.28	37.4	25.7 - 49	Pass
STAP-1117	03/19/07	Pu-239/40	35.23 ± 2.24	31.6	22.9 - 41	Pass
STAP-1117	03/19/07	Sr-90	156.10 ± 6.60	156.0	66.6 - 246	Pass
STAP-1117	03/19/07	U-233/4	42.22 ± 1.84	47.8	30.1 - 71	Pass
STAP-1117	03/19/07	U-238	42.00 ± 1.84	47.4	30.2 - 68	Pass
STAP-1117	03/19/07	Uranium	85.79 ± 3.60	97.3	49.5 - 155	Pass
STAP-1117	03/19/07	Zn-65	363.80 ± 11.90	245.0	208.0 - 412	Pass
STSO-1118	03/19/07	Ac-228	3097.77 ± 94.96	2790.0	1790.0 - 3930	Pass
STSO-1118	03/19/07	Am-241	1000.70 ± 156.10	927.0	548.0 - 1200	Pass
STSO-1118	03/19/07	Bi-212	2467.87 ± 114.33	2500.0	658.0 - 3730	Pass
STSO-1118	03/19/07	Co-60	7847.40 ± 86.60	7330.0	5340.0 - 9820	Pass
STSO-1118	03/19/07	Cs-134	7910.60 ± 356.88	7560.0	4850.0 - 9070	Pass
STSO-1118	03/19/07	Cs-137	4635.00 ± 99.10	4300.0	3290.0 - 5580	Pass
STSO-1118	03/19/07	K-40	12201.60 ± 423.20	11100.0	8050.0 - 15000	Pass
STSO-1118 ^l	03/19/07	Mn-54	< 34.0	0.0		Pass
STSO-1118	03/19/07	Pb-212	2046.80 ± 127.20	1730.0	1120.0 - 2430	Pass
STSO-1118	03/19/07	Pb-214	4142.80 ± 110.40	3330.0	1980.0 - 4980	Pass
STSO-1118	03/19/07	Pu-238	1099.20 ± 73.10	857.0	490.0 - 1200	Pass
STSO-1118	03/19/07	Pu-239/40	1586.10 ± 82.00	1360.0	928.0 - 1810	Pass
STSO-1118	03/19/07	Sr-90	6163.30 ± 791.60	7500.0	2610.0 - 12400	Pass
STSO-1118	03/19/07	Th-234	4329.40 ± 569.10	3590.0	2190.0 - 4560	Pass
STSO-1118	03/19/07	U-233/4	3236.70 ± 106.00	3620.0	2280.0 - 4520	Pass
STSO-1118	03/19/07	U-238	3425.20 ± 134.00	3590.0	2190.0 - 4560	Pass
STSO-1118	03/19/07	Uranium	6787.80 ± 240.00	7380.0	4210.0 - 9930	Pass
STSO-1118	03/19/07	Uranium	6787.80 ± 240.00	7380.0	4210.0 - 9930	Pass
STSO-1118 ^l	03/19/07	Zn-65	0.00 ± 0.00	0.0	0.0 - 0	Pass

TABLE A-7. Interlaboratory Comparison Crosscheck program, Environmental Resource Associates (ERA)^a.

Lab Code ^b	Date	Analysis	Concentration (pCi/L)		Control Limits	Acceptance
			Laboratory Result ^c	ERA Result ^d		
STVE-1119	03/19/07	Am-241	3249.60 ± 150.30	3550.0	2020.0 - 4890	Pass
STVE-1119	03/19/07	Cm-244	1860.70 ± 91.50	1840.0	905.0 - 2870	Pass
STVE-1119	03/19/07	Co-60	2827.90 ± 62.40	2600.0	1760.0 - 3720	Pass
STVE-1119	03/19/07	Cs-134	654.80 ± 48.40	579.0	308.0 - 822	Pass
STVE-1119	03/19/07	Cs-137	3307.30 ± 58.80	2920.0	2150.0 - 4060	Pass
STVE-1119	03/19/07	K-40	40814.20 ± 618.80	37900.0	27200.0 - 53600	Pass
STVE-1119 ^f	03/19/07	Mn-54	< 27.6	0.0		Pass
STVE-1119	03/19/07	Pu-238	2762.00 ± 251.10	2430.0	1250.0 - 3600	Pass
STVE-1119	03/19/07	Pu-239/40	2156.60 ± 83.40	1900.0	1180.0 - 2600	Pass
STVE-1119	03/19/07	Sr-90	8999.70 ± 580.90	8890.0	4900.0 - 11800	Pass
STVE-1119	03/19/07	U-233/4	2821.90 ± 73.50	2940.0	1930.0 - 3920	Pass
STVE-1119	03/19/07	U-238	2896.10 ± 50.70	2910.0	2090.0 - 3610	Pass
STVE-1119	03/19/07	Uranium	5718.00 ± 124.15	5980.0	4110.0 - 7770	Pass
STVE-1119	03/19/07	Zn-65	474.30 ± 45.70	366.0	267.0 - 500	Pass
STW-1120	03/19/07	Am-241	133.50 ± 10.60	179.0	123.0 - 243	Pass
STW-1120	03/19/07	Co-60	541.40 ± 9.00	536.0	467.0 - 631	Pass
STW-1120	03/19/07	Cs-134	1623.80 ± 66.10	1750.0	1290.0 - 2020	Pass
STW-1120	03/19/07	Cs-137	1839.10 ± 17.90	1850.0	1570.0 - 2220	Pass
STW-1120	03/19/07	Fe-55	829.50 ± 226.90	671.0	392.0 - 896	Pass
STW-1120 ^f	03/19/07	Mn-54	< 8.1	0.0		Pass
STW-1120	03/19/07	Pu-238	123.30 ± 4.30	116.0	87.6 - 144	Pass
STW-1120	03/19/07	Pu-239/40	95.10 ± 3.80	90.9	70.3 - 113	Pass
STW-1120	03/19/07	Sr-90	949.40 ± 16.70	989.0	630.0 - 1320	Pass
STW-1120	03/19/07	U-233/4	164.20 ± 6.58	192.0	145.0 - 247	Pass
STW-1120	03/19/07	U-238	169.20 ± 8.22	190.0	145.0 - 236	Pass
STW-1120	03/19/07	Uranium	339.60 ± 10.66	391.0	282.0 - 521	Pass
STW-1120	03/19/07	Zn-65	2009.00 ± 36.40	1910.0	1600.0 - 2410	Pass

^a Results obtained by Environmental, Inc., Midwest Laboratory as a participant in the crosscheck program for proficiency testing administered by Environmental Resources Associates, serving as a replacement for studies conducted previously by the Environmental Measurements Laboratory Quality Assessment Program (EML).

^b Laboratory codes as follows: STW (water), STAP (air filter), STSO (soil), STVE (vegetation).

^c Unless otherwise indicated, the laboratory result is given as the mean ± standard deviation for three determinations.

^d Results are presented as the known values, expected laboratory precision (1 sigma, 1 determination) and control limits as provided by ERA.

^e A high bias (~ 20%) was observed in gamma results for air filters. A composite filter geometry was used in the calculations vs. a single filter geometry. Result of recalculation, Cs-137, 305.8 ± 6.0 pCi/filter.

^f Included in the testing series as a "false positive". No activity expected.