



APR 23 2008

Technical Specification 6.9.1.9

LR-N08-0062

U.S. Nuclear Regulatory Commission
ATTN: Document Control Desk
Washington DC 20555-001

Salem Nuclear Generating Station Unit 2
Facility Operating License No. DPR-75
NRC Docket No. 50-311

SUBJECT: CORE OPERATING LIMITS REPORT - CYCLE 17

In accordance with section 6.9.1.9 of the Salem Unit 2 Technical Specifications, PSEG Nuclear LLC submits the Core Operating Limits Report (COLR) for Salem Unit 2 Cycle 17 in Attachment 1 to this letter.

Should you have any questions regarding this submittal, please contact Mr. E. Villar at (856) 339-5456.

Sincerely,

A handwritten signature in black ink, appearing to be "R. Braun", written in a cursive style.

Robert C. Braun
Site Vice President - Salem

Attachments (1)

A001
NRB

APR 23 2008

Document Control Desk

Page 2

LR-N08-0062

C Mr. Samuel Collins, Administrator - Region I
U. S. Nuclear Regulatory Commission
475 Allendale Road
King of Prussia, PA 19406

U. S. Nuclear Regulatory Commission
Attn: Mr. R. Ennis, Licensing Project Manager – Salem
Mail Stop 08B1
Washington, DC 20555-0001

USNRC Senior Resident Inspector - Salem (X24)

Mr. P. Mulligan, Manager IV
Bureau of Nuclear Engineering
P.O. Box 415
Trenton, NJ 08625

Attachment 1
LR-N08-0062

Core Operating Limit Report For Salem Unit 2, Cycle 17

COLR SALEM 2
Revision 1
February 2008

Core Operating Limits Report for Salem Unit 2, Cycle 17

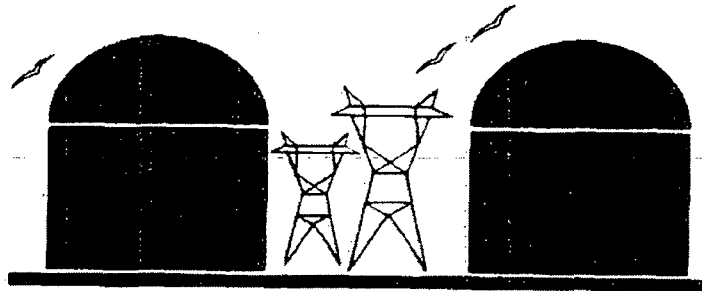


TABLE OF CONTENTS

<u>Section Number</u>	<u>Section Title</u>	<u>Page Number</u>
	Table of Contents	2
	List of Figures	3
1.0	Core Operating Limits Report	4
2.0	Operating Limits	5
2.1	Moderator Temperature Coefficient (Specification 3.1.1.3)	5
2.2	Control Rod Insertion Limits (Specification 3.1.3.5)	6
2.3	Axial Flux Difference (Specification 3.2.1)	6
2.4	Heat Flux Hot Channel Factor – $F_Q(z)$ (Specification 3.2.2)	6
2.5	Nuclear Enthalpy Rise Hot Channel Factor $F_{\Delta H}^N$ (Specification 3.2.3)	8
2.6	Boron Concentration (Specification 3.9.1)	9
3.0	Analytical Methods	9
4.0	References	10

LIST OF FIGURES

<u>Figure Number</u>	<u>Figure Title</u>	<u>Page Number</u>
1	Rod Bank Insertion Limits vs. Thermal Power	11
2	Axial Flux Difference Limits as a Function of Rated Thermal Power	12
3	$K(z)$ – Normalized $F_Q(z)$ as a Function of Core Height	13

1.0 CORE OPERATING LIMITS REPORT

This Core Operating Limits Report (COLR) for Salem Unit 2 Cycle 17 has been prepared in accordance with the requirements of Technical Specification 6.9.1.9.

The Technical Specifications affected by this report are listed below:

- 3.1.1.3 Moderator Temperature Coefficient
- 3.1.3.5 Control Rod Insertion Limits
- 3.2.1 Axial Flux Difference
- 3.2.2 Heat Flux Hot Channel Factor - $F_Q(Z)$
- 3.2.3 Nuclear Enthalpy Rise Hot Channel Factor - $F_{\Delta H}^N$
- 3.9.1 Boron Concentration

2.0 OPERATING LIMITS

The cycle-specific parameter limits for the specifications listed in Section 1.0 are presented in the following subsections. These limits have been developed using the NRC-approved methodologies specified in Technical Specification 6.9.1.9 and in Section 3.0 of this report.

2.1 Moderator Temperature Coefficient (Specification 3.1.1.3)

2.1.1 The Moderator Temperature Coefficient (MTC) limits are:

The BOL/ARO/HZP-MTC shall be less positive than or equal to $0 \Delta k/k/^\circ F$.

The EOL/ARO/RTP-MTC shall be less negative than or equal to $-4.3 \times 10^{-4} \Delta k/k/^\circ F$.

2.1.2 The MTC Surveillance limit is:

The 300 ppm/ARO/RTP-MTC should be less negative than or equal to $-3.6 \times 10^{-4} \Delta k/k/^\circ F$.

where: BOL stands for Beginning of Cycle Life

ARO stands for All Rods Out

HZP stands for Hot Zero THERMAL POWER

EOL stands for End of Cycle Life

RTP stands for Rated THERMAL POWER

2.2 Control Rod Insertion Limits (Specification 3.1.3.5)

2.2.1 The control rod banks shall be limited in physical insertion as shown in Figure 1.

2.3 Axial Flux Difference (Specification 3.2.1)

[Constant Axial Offset Control (CAOC) Methodology]

2.3.1 The Axial Flux Difference (AFD) target band shall be **the more restrictive of** (+6%, -9%) or **the target band as defined in Reference 1.**

2.3.2 The AFD Acceptable Operation Limits are provided in Figure 2.

2.4 Heat Flux Hot Channel Factor - $F_Q(Z)$ (Specification 3.2.2)

[F_{xy} Methodology]

$$F_Q(Z) \leq \frac{F_Q^{RTP}}{P} * K(Z) \text{ for } P > 0.5$$

$$F_{\bar{Q}}(Z) \leq \frac{F_Q^{RTP}}{0.5} * K(Z) \text{ for } P \leq 0.5$$

where: $P = \frac{\text{THERMAL POWER}}{\text{RATED THERMAL POWER}}$

2.4.1 $F_Q^{RTP} = 2.40$

2.4.2 $K(Z)$ is provided in Figure 3.

2.4.3 $F_{xy}^L = F_{xy}^{RTP} [1.0 + PF_{xy}(1.0 - P)]$

where:	$F_{xy}^{RTP} = 2.00$	for unrodded upper core planes 1 through 6
	1.71	for unrodded upper core planes 7 through 31
	1.78	for unrodded lower core planes 32 through 55
	2.00	for unrodded lower core planes 56 through 61
	2.13	for the core planes containing Bank D control rods

$PF_{xy} = 0.3$

- 2.4.4 If the Power Distribution Monitoring System (PDMS) is used for core power distribution surveillance and is OPERABLE, as defined in Technical Specification 3.3.3.14, the uncertainty, U_{FQ} , to be applied to the Heat Flux Hot Channel Factor $F_Q(z)$ shall be calculated by the following formula:

$$U_{FQ} = \left(1.0 + \frac{U_Q}{100.0} \right) \cdot U_e$$

where:

U_Q = Uncertainty for power peaking factor as defined in equation 5-19 of Analytical Method 3.5.

U_e = Engineering uncertainty factor.
= 1.03

Note: U_{FQ} = PDMS Surveillance Report Core Monitor Fxy Uncertainty in %.

- 2.4.5 If the INCORE movable detectors are used for core power distribution surveillance, the uncertainty, U_{FQ} , to be applied to the Heat Flux Hot Channel Factor $F_Q(z)$ shall be calculated by the following formula:

$$U_{FQ} = U_{qu} \cdot U_e$$

where:

U_{qu} = Base F_Q measurement uncertainty.
= 1.05

U_e = Engineering uncertainty factor.
= 1.03

2.5 Nuclear Enthalpy Rise Hot Channel Factor - $F_{\Delta H}^N$ (Specification 3.2.3)

$$F_{\Delta H}^N = F_{\Delta H}^{RTP} [1.0 + PF_{\Delta H} (1.0 - P)]$$

where: $P = \frac{\text{THERMAL POWER}}{\text{RATED THERMAL POWER}}$

2.5.1 $F_{\Delta H}^{RTP} = 1.65$

2.5.2 $PF_{\Delta H} = 0.3$

2.5.3 If the Power Distribution Monitoring System (PDMS) is used for core power distribution surveillance and is OPERABLE, as defined in Technical Specification 3.3.3.14, the uncertainty, $U_{F_{\Delta H}}$, to be applied to the Nuclear Enthalpy Rise Hot Channel Factor, $F_{\Delta H}^N$, shall be calculated by the following formula:

$$U_{F_{\Delta H}} = 1.0 + \frac{U_{\Delta H}}{100.0}$$

where:

$U_{\Delta H}$ = Uncertainty for nuclear enthalpy rise hot channel factor as defined in equation 5-19 of Analytical Method 3.5.

2.5.4 If the INCORE movable detectors are used for core power distribution surveillance, the uncertainty, $U_{F_{\Delta H}}$, to be applied to the Nuclear Enthalpy Rise Hot Channel Factor $F_{\Delta H}^N$ shall be calculated by the following formula:

$$U_{F_{\Delta H}} = U_{F_{\Delta Hm}}$$

where:

$U_{F_{\Delta Hm}}$ = Base $F_{\Delta H}$ measurement uncertainty.
= 1.04

2.6 Boron Concentration (Specification 3.9.1)

A Mode 6 boron concentration, maintained at or above 2124 ppm, in the Reactor Coolant System, the fuel storage pool, the refueling canal, and the refueling cavity ensures the most restrictive of the following reactivity conditions is met:

- a) A K-effective (K_{eff}) of 0.95 or less at All Rods In (ARI), Cold Zero Power (CZP) conditions with a 1% $\Delta k/k$ uncertainty added.
- b) A K_{eff} of 0.99 or less at All Rods Out (ARO), CZP conditions with a 1% $\Delta k/k$ uncertainty added.
- c) c) A boron concentration of greater than or equal to 2000 ppm, which includes a 50 ppm conservative allowance for uncertainties.

3.0 ANALYTICAL METHODS

The analytical methods used to determine the core operating limits shall be those previously reviewed and approved by the NRC, specifically those described in the following documents.

- 3.1 WCAP-9272-P-A, Westinghouse Reload Safety Evaluation Methodology, July 1985 (W proprietary), Methodology for Specifications listed in 6.9.1.9.a., Approved by Safety Evaluation Dated-May 28, 1985.
- 3.2 WCAP-8385, Power Distribution Control and Load Following Procedures – Topical Report, September 1974 (W proprietary) Methodology for Specification 3 / 4.2.1 Axial Flux Difference, Approved by Safety Evaluation dated January 31, 1978.
- 3.3 WCAP-10054-P-A, Rev. 1, Westinghouse Small Break ECCS Evaluation Model Using NOTRUMP Code, August 1985 (W proprietary), Methodology for Specification 3 / 4.2.2 Heat Flux Hot Channel Factor. Approved for Salem by NRC letter dated August 25, 1993.
- 3.4 WCAP-10266-P-A, Rev. 2, The 1981 Version of Westinghouse Evaluation Model Using the BASH Code, Rev. 2 March 1987 (W proprietary) Methodology for Specification 3 / 4.2.2 Heat Flux Hot Channel Factor, Approved by Safety Evaluation dated November 13, 1986.
- 3.5 WCAP-12472-P-A, BEACON Core Monitoring and Operations Support System, Revision 0, (W proprietary). Approved February 1994.
- 3.6 CENPD-397-P-A, Rev. 1, Improved Flow Measurement Accuracy Using Crossflow Ultrasonic Flow Measurement Technology, May 2000.
- 3.7 WCAP-10054-P-A, Addendum 2, Rev. 1, Addendum to the Westinghouse Small Break ECCS Evaluation Model Using the NOTRUMP Code: Safety Injection into the Broken Loop and COSI Condensation Model, July 1997

4.0 REFERENCES

1. Salem Unit 2 Reactor Engineering Procedure, S2.RE-RA.ZZ-0011(Q), Tables.
2. Salem Nuclear Generating Station Unit No. 2, Amendment No. 262, License No. DPR-75, Docket No. 50-311.

FIGURE 1

ROD BANK INSERTION LIMITS VS. THERMAL POWER

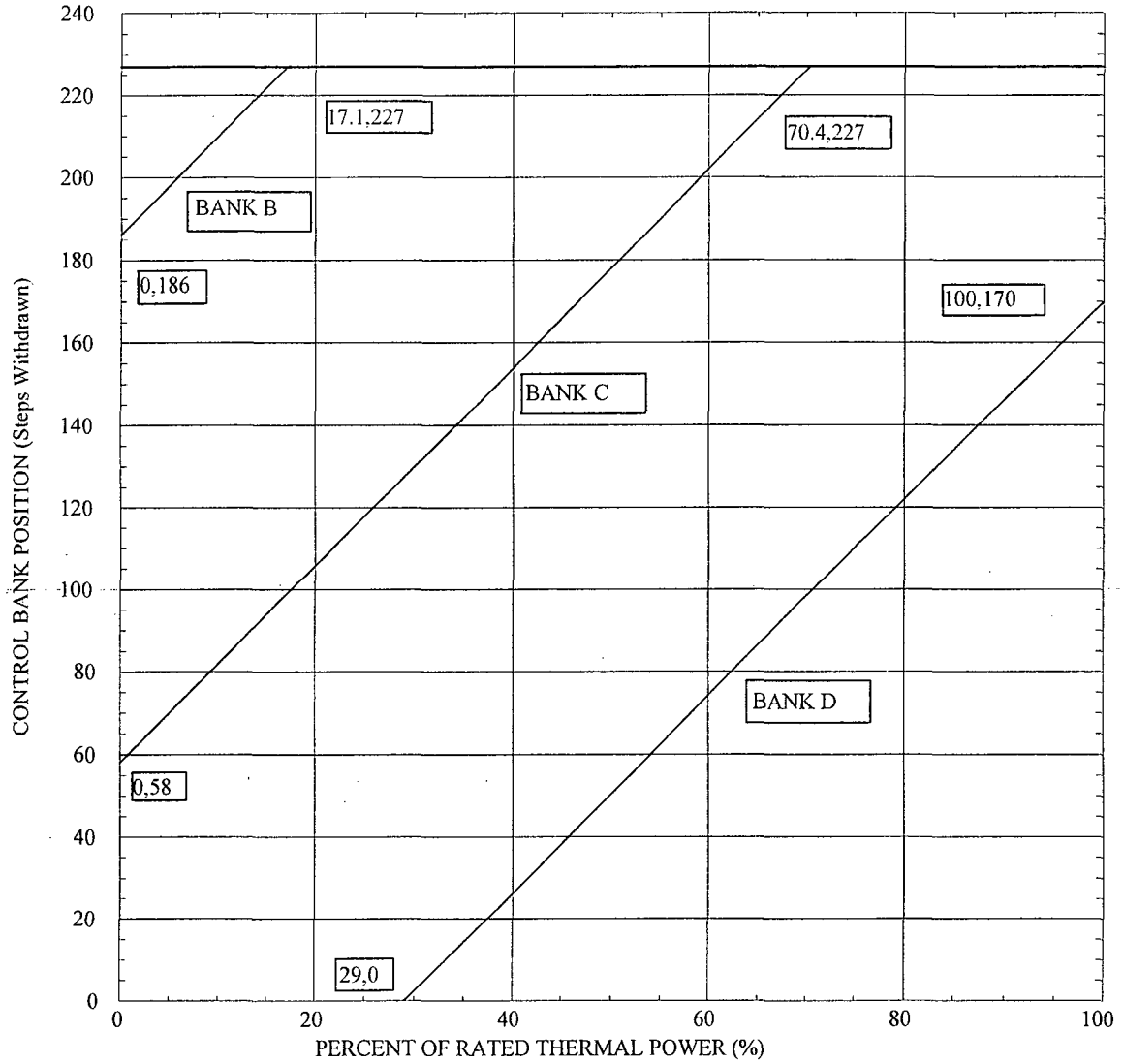


FIGURE 2
AXIAL FLUX DIFFERENCE LIMITS AS A FUNCTION OF RATED
THERMAL POWER

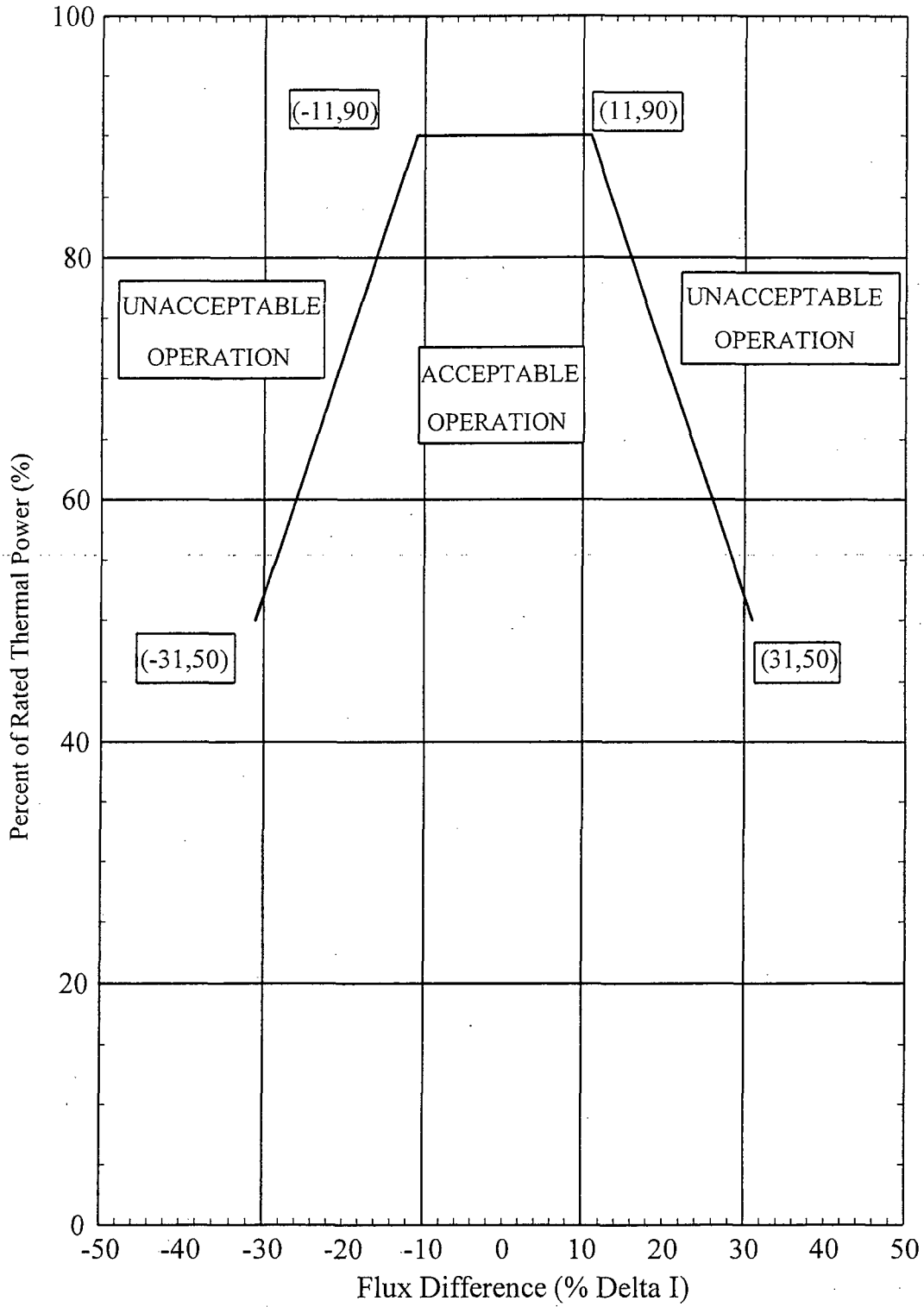
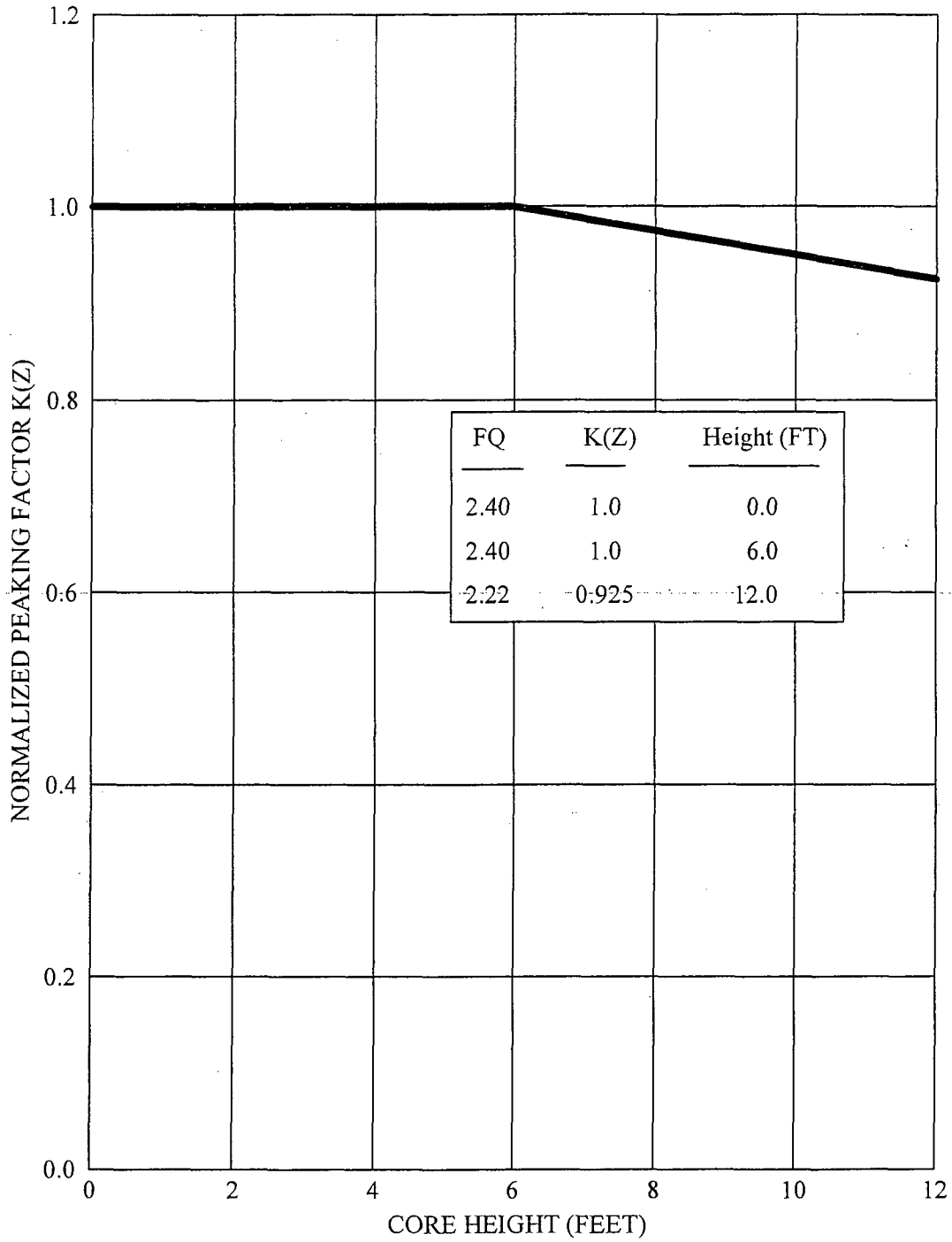
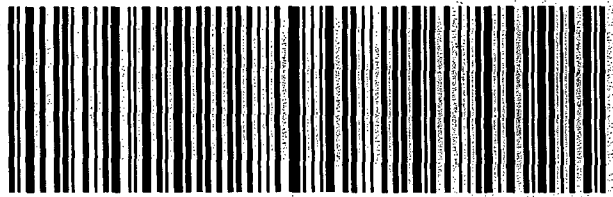


FIGURE 3
K(Z) – NORMALIZED FQ(Z) AS A FUNCTION OF CORE HEIGHT



ZD OBTA

MD-US IAD



Emp# 110751 24APR08 IL6A

27

00

FedEx US Airbill

Express

FedEx Tracking Number 8646 0901 5411

0215

Recipient's Copy

1 From: This portion can be removed for Recipient's records.

Date 4/24/08 FedEx Tracking Number 864609015411

Sender's Name Jennifer Giese Phone 856 339 2210

Company PSE&G/NUCLEAR DEPT

Address END OF ALLOWAY CREEK NECK RD Dept./Floor/Suite/Room

City HANCOCKS BRIDGE State NJ ZIP 08039

2 Your Internal Billing Reference

3 To:

Recipient's Name Document Control desk Phone 856 339 2210

Company US NRC

Recipient's Address 11555 Rockville Pike Dept./Floor/Suite/Room

We cannot deliver to P.O. boxes or P.O. ZIP codes.

Address To request a package be held at a specific FedEx location, print FedEx address here.

City Rockville State md ZIP 20852

0374428051



8646 0901 5411

fedex.com 1.800.GoFedEx 1.800.463.3339

RECIPIENT: PEEL HERE

4a Express Package Service Packages up to 150 lbs.

FedEx Priority Overnight Next business morning* Friday shipments will be delivered on Monday unless SATURDAY Delivery is selected. FedEx Standard Overnight Next business afternoon* Saturday Delivery NOT available. FedEx First Overnight Earliest next business morning delivery to select locations.* Saturday Delivery NOT available.

FedEx 2Day Second business day* Thursday shipments will be delivered on Monday unless SATURDAY Delivery is selected. FedEx Express Saver Third business day* Saturday Delivery NOT available. * To most locations.

4b Express Freight Service Packages over 150 lbs.

FedEx 1Day Freight* Next business day* Friday shipments will be delivered on Monday unless SATURDAY Delivery is selected. FedEx 2Day Freight Second business day* Thursday shipments will be delivered on Monday unless SATURDAY Delivery is selected. FedEx 3Day Freight Third business day* Saturday Delivery NOT available. * Call for Confirmation. ** To most locations.

5 Packaging

FedEx Envelope* FedEx Pak* Includes FedEx Small Pak, FedEx Large Pak, and FedEx Sturdy Pak. FedEx Box FedEx Tube Other * Declared value limit \$500.

6 Special Handling Include FedEx address in Section 3.

SATURDAY Delivery Not available for FedEx Standard Overnight, FedEx Express Saver, or FedEx 3Day Freight. HOLD Weekday at FedEx Location Not available for FedEx First Overnight. HOLD Saturday at FedEx Location Available ONLY for FedEx Priority Overnight and FedEx 2Day to select locations.

Does this shipment contain dangerous goods? One box must be checked.

No Yes As per attached Shipper's Declaration. Yes Shipper's Declaration not required. Dry Ice Dry Ice, 9, UN 1845. x _____ to Cargo Aircraft Only

Dangerous goods (including dry ice) cannot be shipped in FedEx packaging.

7 Payment Bill to: Enter FedEx Acct. No. or Credit Card No. below. Obtain Recip. Acct. No.

Sender Acct. No. in Section 3 will be billed. Recipient Third Party Credit Card Cash/Check

Total Packages 1 Total Weight 1.0

Credit Card Auth.

Your liability is limited to \$100 unless you declare a higher value. See the current FedEx Service Guide for details.

8 Residential Delivery Signature Options If you require a signature, check Direct or Indirect.

No Signature Required. Package may be left without obtaining a signature for delivery. Direct Signature Someone at recipient's address may sign for delivery. Fee applies. Indirect Signature If no one is available at recipient's address, someone at a neighboring address may sign for delivery. Fee applies. **519**