



0 0.2 0.4 0.8 1.2 1.6 Miles

FIGURE 2.3.1-3 Rev. 0
 CCNPP SITE AND MAJOR DRAINAGE
 ROUTES (BASED ON USGS 7.5 MINUTE
 SERIES TOPOGRAPHIC MAP, COVE
 POINT QUADRANGLE, 1987)
CCNPP UNIT 3 ER

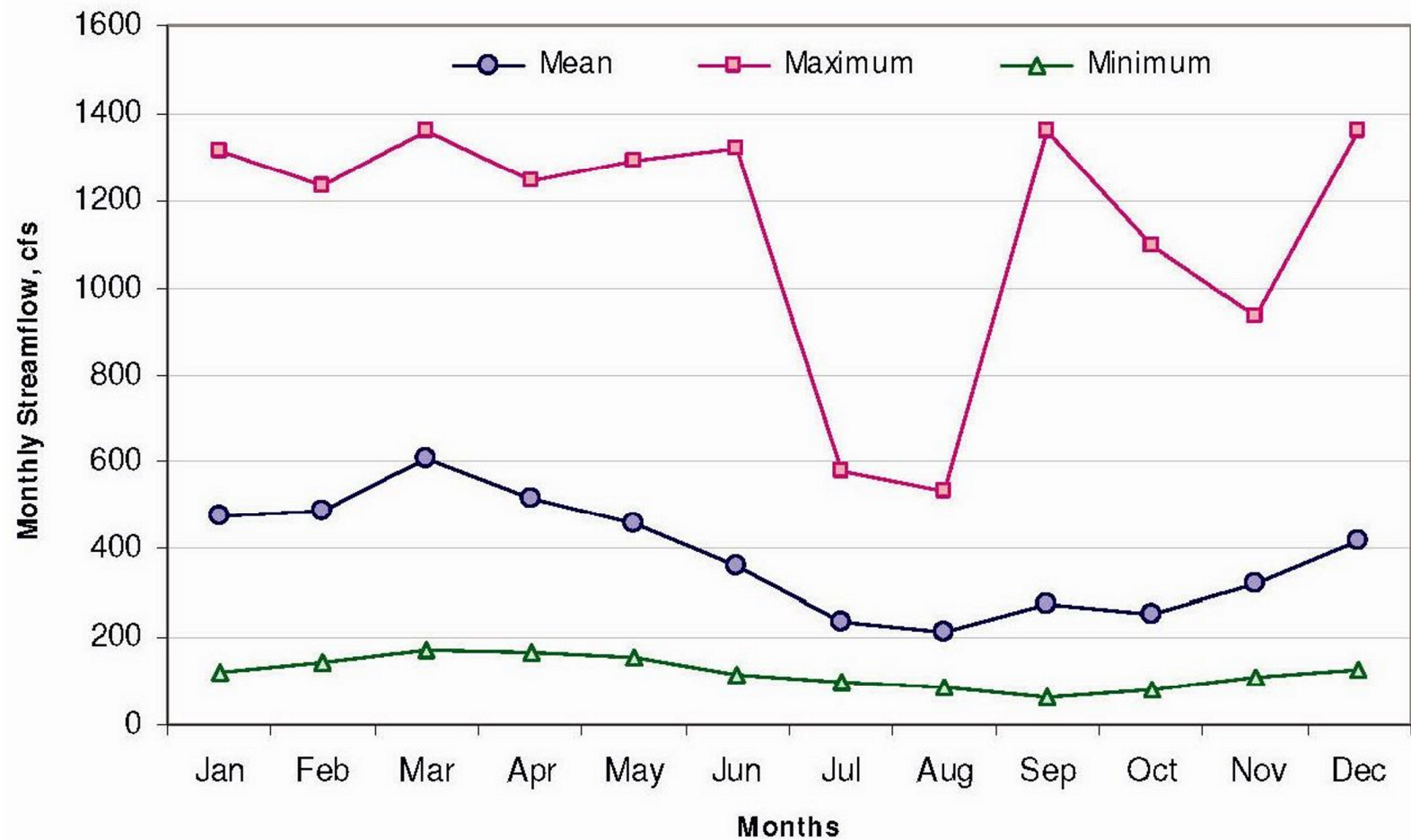


FIGURE 2.3.1-5 **Rev. 0**
MEAN, AVERAGE MAXIMUM AND AVERAGE MINIMUM
MONTHLY STREAMFLOWS IN THE PATUXENT
RIVER NEAR BOWIE, MD, USGS STATION NO.
01594440, PATUXENT RIVER AT BOWIE, MD
(1977-06-01 through 2005-09-30)
CCNPP UNIT 3 ER

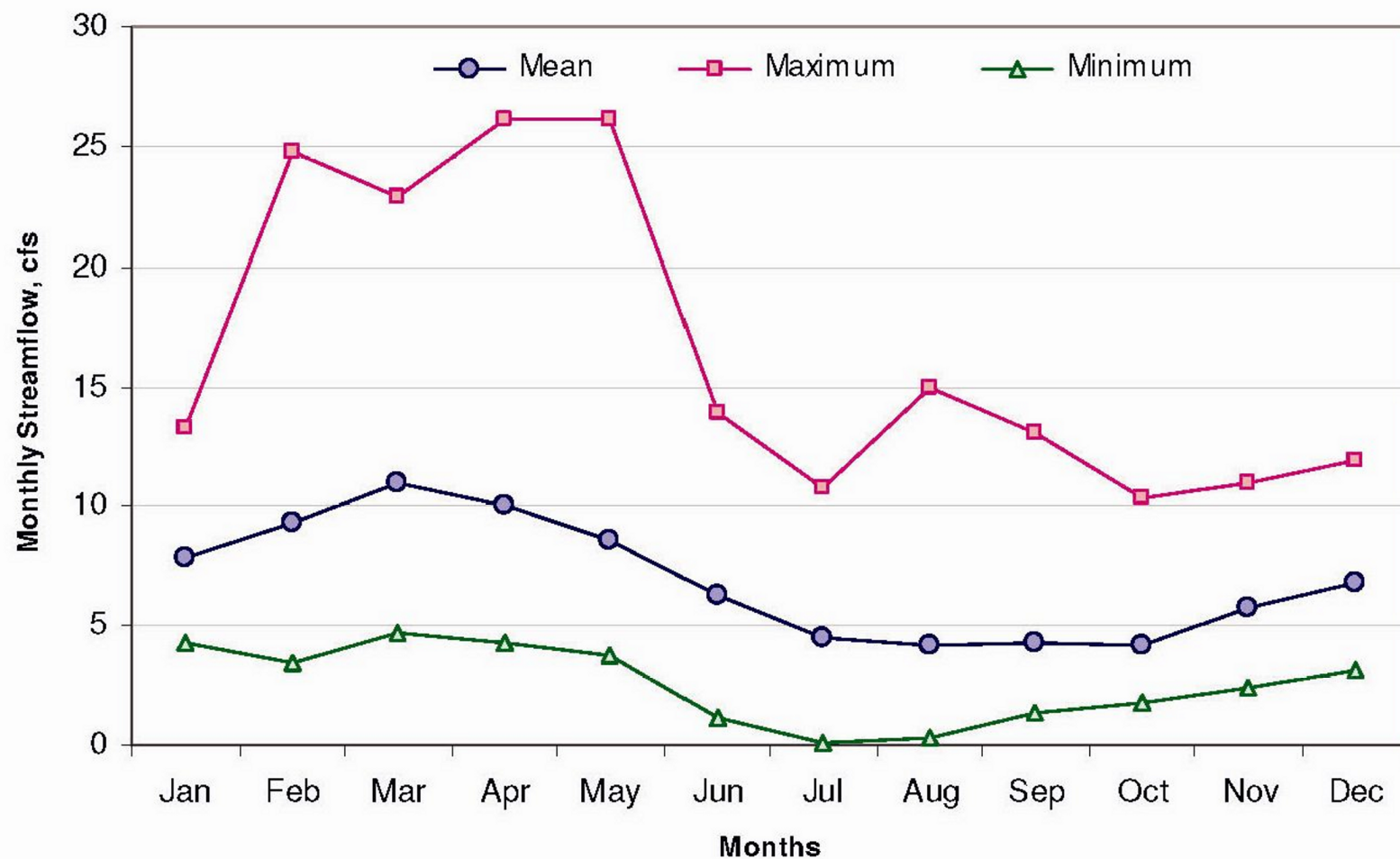


FIGURE 2.3.1-6 **Rev. 0**
MEAN, AVERAGE MAXIMUM AND AVERAGE MINIMUM
MONTHLY STREAMFLOWS IN THE ST. LEONARD CREEK
AT ST. LEONARD, MD, USGS STATION NO. 01594800,
ST. LEONARD CREEK NEAR ST. LEONARD, MD
(1956-12-01 through 2003-09-30)
CCNPP UNIT 3 ER

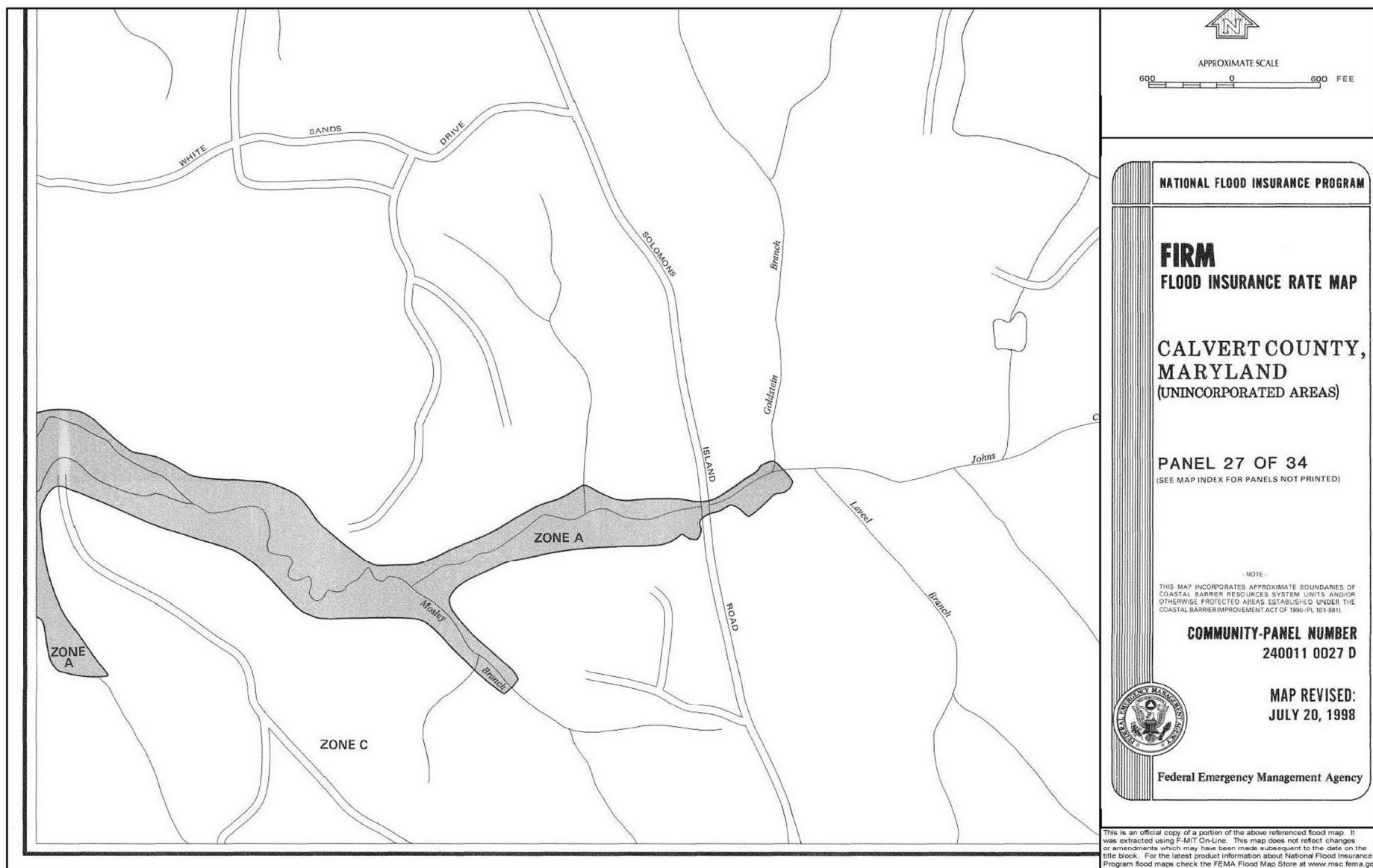


FIGURE 2.3.1-7 Rev. 0
FLOOD INSURANCE MAP
OF CALVERT COUNTY, MD
FOR PORTIONS OF JOHNS CREEK
CCNPP UNIT 3 ER

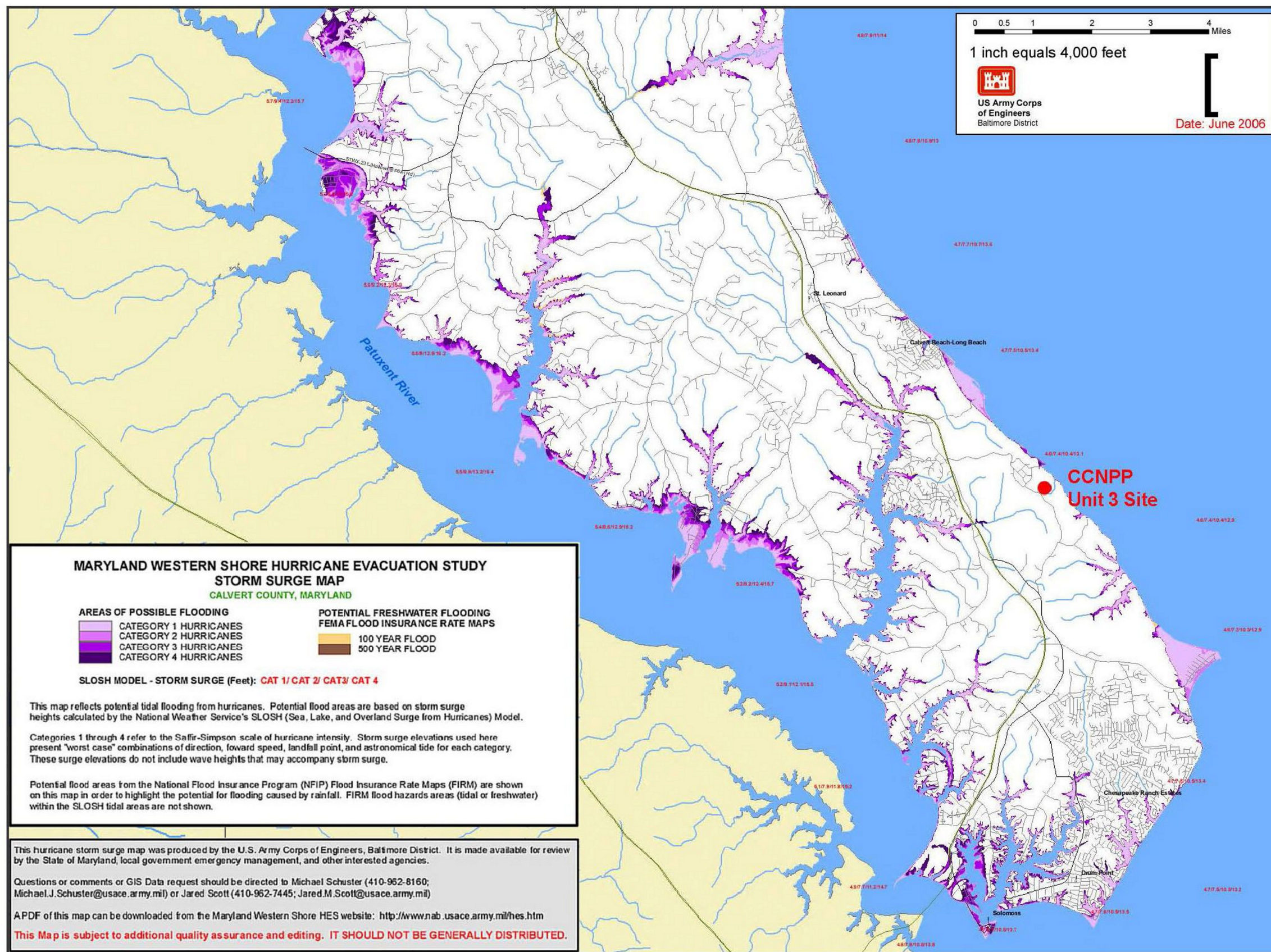


FIGURE 2.3.1-8 **Rev. 0**
STORM SURGE MAP OF
CALVERT COUNTY, MD
CCNPP UNIT 3 ER

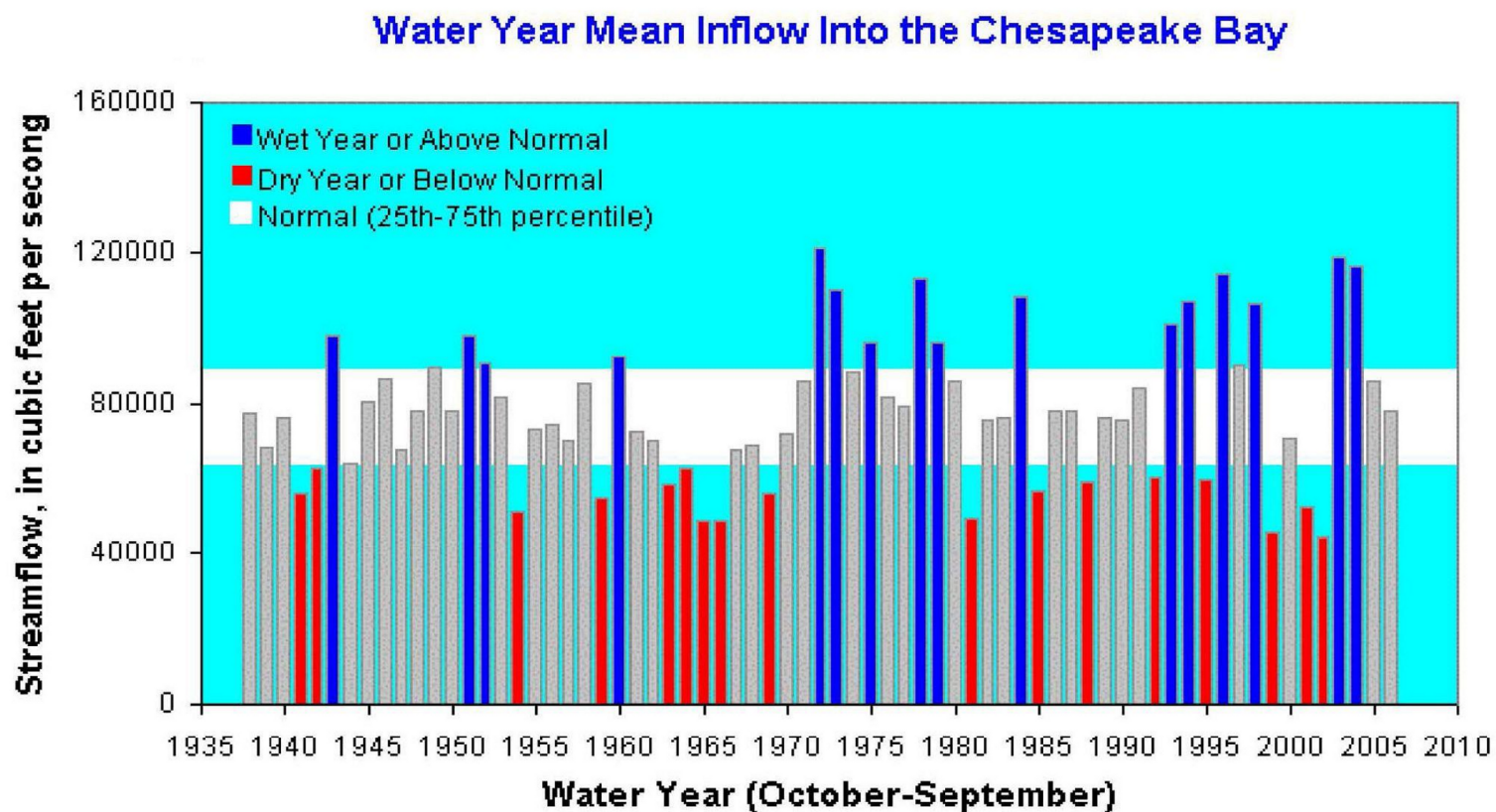


FIGURE 2.3.1-9 **Rev. 0**
 MEAN ANNUAL FRESHWATER INFLOW
 INTO THE CHESAPEAKE BAY
CCNPP UNIT 3 ER

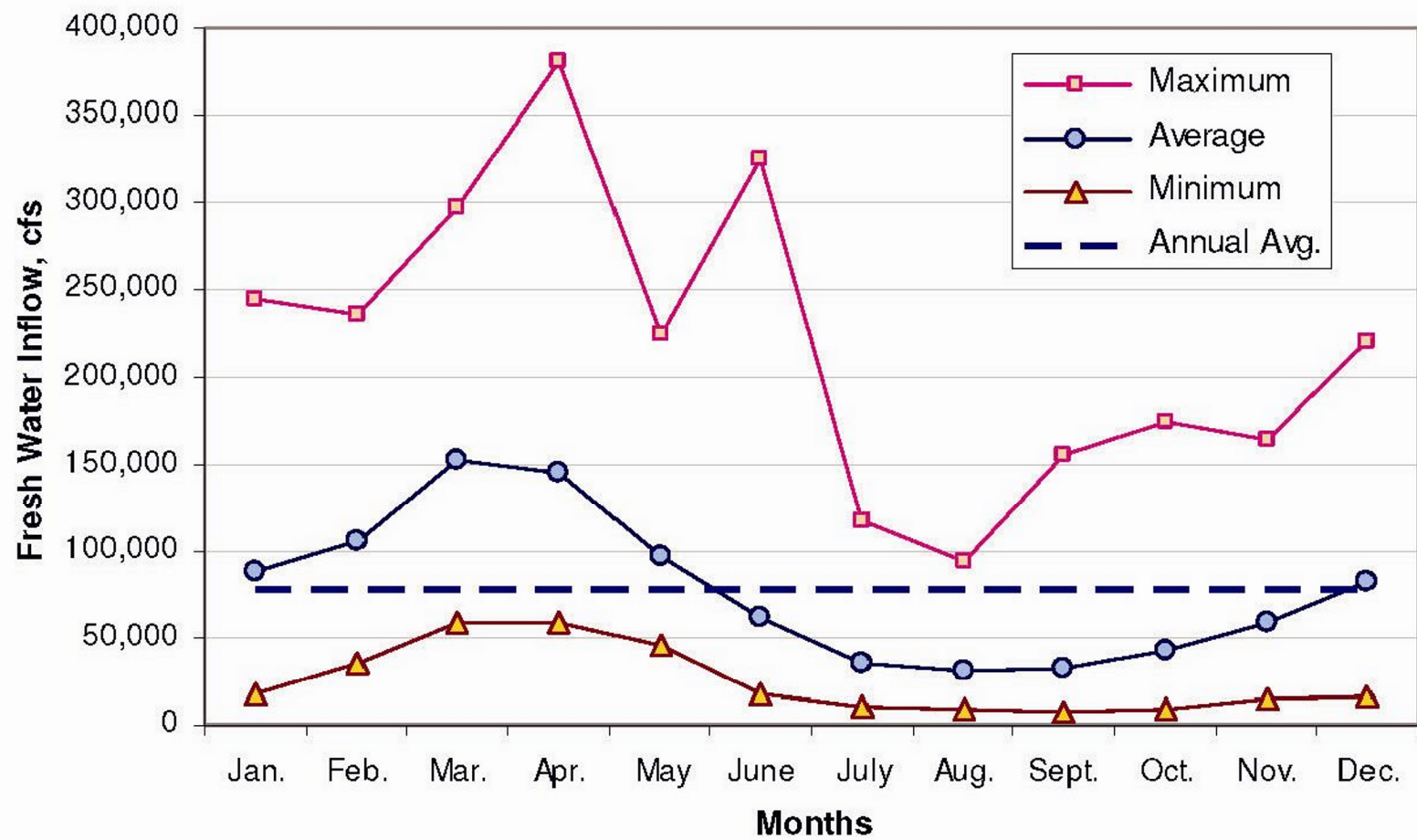


FIGURE 2.3.1-10 **Rev. 0**
MAXIMUM, AVERAGE AND MINIMUM OF MEAN
MONTHLY FRESHWATER INFLOW TO THE
CHESAPEAKE BAY FOR THE PERIOD FROM
1951 TO 2000 INCLUDING AVERAGE
ANNUAL FRESHWATER INFLOW
CCNPP UNIT 3 ER