

From: "Richard Moss" <rmoss@envllc.com>
To: "Lardiere, Eric" <elardiere@wkr.com>
Date: Thu, Nov 17, 2005 10:19 AM
Subject: Whittaker Project Status Report Oct 2005

Attached is the Whittaker Project Status Report describing October 2005 activities.

Please let me know if you have any questions or would like additional information regarding the project activities.

Richard Moss CSP
 Project Manager
 Envirocare of Utah, LLC
 143 West St.
 New Milford, CT 06776
 Office: 860.210.3067

(b)(6)

Fax: 860.210.3015

Confidentiality Notice: The information contained in this message is intended only for the use of the addressee, and may be confidential and/or privileged. If the reader of this message is not the intended recipient, or the employee or agent responsible to deliver it to the intended recipient, you are hereby notified that any dissemination, distribution or copying of this communication is strictly prohibited. So there.

CC: "Edward Doubleday" <edoubleday@envllc.com>, "Lee Penney" <lpenney@envllc.com>, "Roger Pennifill" <roger.pennifill@aig.com>, "Leonard Geraci" <leonard.geraci@aig.com>, "Marjorie McLaughlin" <mmm3@nrc.gov>, "Jim Kotton" <jjk@nrc.gov>, "Bryan Werner" <brwerner@state.pa.us>, "Roy Woods" <royowoods@state.pa.us>, "Gerard Toumey" <gtoumey@envllc.com>, "Patrick Horkman" <phorkman@envllc.com>, "Kevin Taylor" <ktaylor@envllc.com>, "Lori Czyz" <lczyz@envllc.com>, "Robert Maiers" <rmaiers@state.pa.us>

Information in this record was deleted
 in accordance with the Freedom of Information
 Act, exemptions _____
 FOIA- _____

B/118

Mail Envelope Properties (437C9F5F.E1C : 1 : 28188)

Subject: Whittaker Project Status Report Oct 2005
Creation Date Thu, Nov 17, 2005 10:13 AM
From: "Richard Moss" <rmoss@envllc.com>
Created By: rmoss@envllc.com

Recipients

nrc.gov

kp1_po.KP_DO

JJK CC (James Kottan)

MMM3 CC (Marjorie McLaughlin)

state.pa.us

rmaiers CC (Robert Maiers)

royowoods CC (Roy Woods)

brwerner CC (Bryan Werner)

envllc.com

lczyz CC (Lori Czyz)

ktaylor CC (Kevin Taylor)

phorkman CC (Patrick Horkman)

gtoumey CC (Gérard Toumey)

lpenney CC (Lee Penney)

edoubleday CC (Edward Doubleday)

aig.com

leonard.geraci CC (Leonard Geraci)

roger.pennifill CC (Roger Pennifill)

wkr.com

elardiere (Eric Lardiere)

Post Office

kp1_po.KP_DO

Route

nrc.gov

state.pa.us

envllc.com

aig.com

wkr.com

Files

MESSAGE

TEXT.htm

Size

790

1916

Date & Time

Thursday, November 17, 2005 10:13 AM

Whittaker Project Status_11-16-05.doc
Mime.822 2851949

2080256

Options

Expiration Date: None
Priority: Standard
ReplyRequested: No
Return Notification: None

Concealed Subject: No
Security: Standard



ENVIROCARE OF UTAH, LLC
SAFE AND SECURE

WHITTAKER DECOMMISSIONING PROJECT

Date: November 16, 2005
To: E. Lardiere
Cc: L. Geraci, R. Pennifill, E. Doubleday, L. Penney, J. Kotton (USNRC), Marjorie McLaughlin (USNRC), R. Maier (PABRP), B. Werner (PABRP), R. Woods (PABRP), P. Horkman, K. Taylor, G. Toumey, L. Czyz
From: Richard Moss, CSP
Project Manager, Whittaker Decommissioning Project
Subject: Project Status Report October 2005

Major Activities

Site activity during October involved LLRW shipments, the installation of site stabilization measures and limited excavation into two remaining contaminated areas of Section 2.

Several site stabilization measures were undertaken:

1. Type 3 material was applied along the GMI property line in Section 2 as temporary rip-rap. Section 2 was excavated to the fenceline and these areas warranted stabilization to prevent sloughing during the winter or early spring. Additional Type 3 material was applied along the dike at locations that had been previously excavated to prevent potential erosion during the early spring.
2. Additional erosion control fencing was installed within the southern area of Section 2 to inhibit movement of material in an area that is ~15 to 20 feet below original grade.

Shipments were suspended for the year on Friday October 21. To date 6047 tons of thorium bearing slag has been removed from the site. The schedule was intended to move 5300 tons by October 17, which was met and extended several days to meet the minimum quantity contracted for October delivery.

Approximately 4500 tons of LLRW resides on the Section 3 pad for disposition in 2006. This material is mix of contaminated soil fines and slag. Radiological sampling with the ISOCS indicated actinium levels at 30-50 pci/g average with samples as high as 90 pci/g.

Approximately 8,000 cubic yards of radiologically clean soil has been separated from the contaminated slag and is staged to the east of the concrete pad. It is intended for backfilling and contouring Section 2. Environmental characterizations of the stockpiled material are presently being conducted.



ENVIROCARE OF UTAH, LLC

SAFE AND SECURE

Other Site Activities:

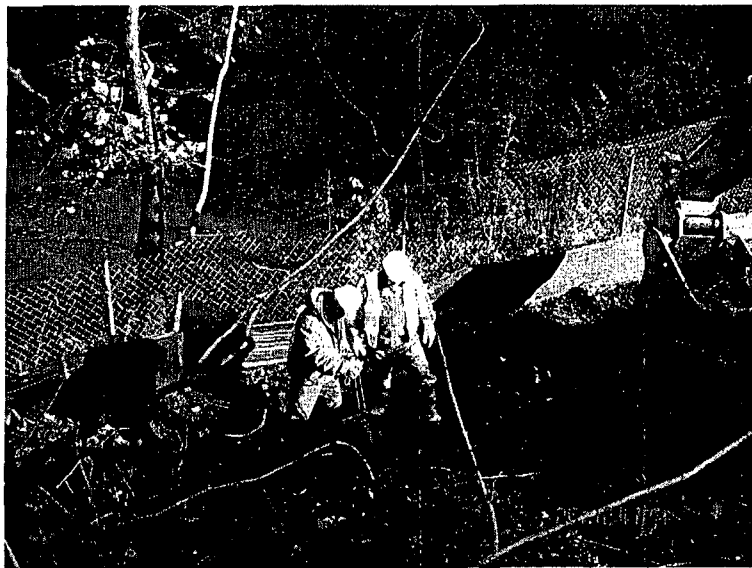
1. A detailed walkover survey of Section 2, using NaI detectors, was conducted to collect isolated surface material that may have eluded the equipment or was previously shielded by other material. Note that the Final Status Survey of Section 2 will be conducted upon completion of work on the adjacent property, as it is likely that LLRW material will be transported across Section 2 during that remedial operation.
2. Fenceline radiological surveys have been conducted weekly.
3. The trommel screener was removed from service is underwent decontamination and radiological release.

Planned November Activities:

1. All site stabilization tasks will be completed.
2. All heavy equipment will be decontaminated and surveyed for free release.
3. Instrumentation and other equipment will be packaged and removed from the site as part of the demobilization.
4. In accordance with requirements of the Radiological Material License, groundwater monitoring will take place during November.

Representative photos of site operations are shown below and on the following page.

Please let me know if you have any questions or require additional information regarding these activities.



During the third week of October work was done along the bank of the Shenango River to remove surface material. Since this process removed some vegetation, stone was applied in areas susceptible to erosion. This area, at the SE corner of Section 2 will need further investigation and LLRW slag removal during 2006.



ENVIROCARE OF UTAH, LLC

SAFE AND SECURE



This view is overlooking the LLRW stockpile, looking north from the Type 3 stockpile (clean slag). The loader is adding the contaminated soil fines pile to the LLRW slag pile. Staged to the left of the stockpile is the unreleasable metal debris that will be shipped in 2006 as LLRW.



Senior HP Joe Trowbridge is shown here conducting a walkover survey of Section 2 at the excavated level. Slope in the background is along the property line with Greenville Metals.