

From: "Rich Moss" <rmoss@scientech.com>
To: "Eric Lardiere" <elardiere@wkr.com>
Date: Tue, Oct 11, 2005 4:31 PM
Subject: Whittaker Decommissioning Project Sept 2005 Status Report

BlankAttached is the Whittaker Project Status Report describing September 2005 activities. Please let me know if you have any questions or would like additional information regarding the project activities.

Richard D. Moss CSP
Project Manager, Field Services
Envirocare of Utah, LLC
143 West St.
New Milford, CT 06776
Office: 860.210.3067

(b)(6)

Confidentiality Notice: The information contained in this message is intended only for the use of the addressee, and may be confidential and/or privileged. If the reader of this message is not the intended recipient, or the employee or agent responsible to deliver it to the intended recipient, you are hereby notified that any dissemination, distribution or copying of this communication is strictly prohibited. So there.

CC: "Leonard Geraci" <leonard.geraci@aig.com>, "Roger Pennifill" <roger.pennifill@aig.com>, "Ed Doubleday" <edoubleday@scientech.com>, "Lee Penney" <lpenney@scientech.com>, "Jim Kotton" <jjk@nrc.gov>, "Marjorie McLaughlin" <mmm3@nrc.gov>, "Robert Maiers" <rmaiers@state.pa.us>, <bwerner@state.pa.us>, <rowoods@state.pa.us>, "Pat Horkman" <phorkman@scientech.com>, "Kevin Taylor" <ktaylor@scientech.com>, "Jerry Toumey" <gtoumey@scientech.com>, "Lori Czyz" <LCzyz@scientech.com>

B/15

Information in this record was deleted
in accordance with the Freedom of Information
Act, exemptions 6
FOIA- 2008-0068

Mail Envelope Properties (434C20BB.E7F : 16 : 15999)

Subject: Whittaker Decommissioning Project Sept 2005 Status Report
Creation Date Tue, Oct 11, 2005 4:24 PM
From: "Rich Moss" <rmoss@scientech.com>

Created By: rmoss@scientech.com

Recipients

nrc.gov

kp1_po.KP_DO

MMM3 CC (Marjorie McLaughlin)

JJK CC (James Kottan)

scientech.com

LCzyz CC ('Lori Czyz')

gtoumey CC (Jerry Toumey)

ktaylor CC (Kevin Taylor)

phorkman CC (Pat Horkman)

lpenney CC (Lee Penney)

edoubleday CC (Ed Doubleday)

state.pa.us

rowoods CC

bwerner CC

rmaiers CC (Robert Maiers)

aig.com

roger.pennifill CC (Roger Pennifill)

leonard.geraci CC (Leonard Geraci)

wkr.com

elardiere (Eric Lardiere)

Post Office

kp1_po.KP_DO

Route

nrc.gov

scientech.com

state.pa.us

aig.com

wkr.com

Files

MESSAGE

TEXT.htm

Size

792

1845

Date & Time

Tuesday, October 11, 2005 4:24 PM

Blank Bkgrd.gif	145	
Whittaker Project Status_10-11-05.doc		1633280
Mime.822	2241082	

Options

Expiration Date:	None
Priority:	Standard
ReplyRequested:	No
Return Notification:	None

Concealed Subject:	No
Security:	Standard



ENVIROCARE OF UTAH, LLC

SAFE AND SECURE

WHITTAKER DECOMMISSIONING PROJECT

Date: October 11, 2005

To: E. Lardiere

Cc: L. Geraci, R. Pennifill, E. Doubleday, L. Penney, J. Kotton (USNRC), Marjorie McLaughlin (USNRC), R. Maier (PABRP), B. Werner (PABRP), R. Woods (PABRP), P. Horkman, K. Taylor, G. Toumey, L. Czyz

From: Richard Moss, CSP
Project Manager, Whittaker Decommissioning Project

Subject: Project Status Report September 2005

Major Activities

Site activity during September consisted primarily of LLRW shipments and the excavation of the Section 2, which was completed later in the month.

The onsite radiological analysis and environmental sampling of the soil stockpile was conducted. The soil material, intended as backfill for Section 2, is being confirmed for compliance with the PADEP Clean Fill Policy. Both the radiological and environmental sampling of the backfill will be concluded by early October 2005. The Radiological Sampling Plan and Environmental Sampling Plan were also completed in September.

With the Section 2 excavation having been completed, a walk-over radiological survey is presently being conducted to identify any isolated debris that may remain. The Final Status Survey Plan for Section 2 (82A9564) was completed during September and was provided to the NRC as the guidance document in support confirmatory sampling of this area.

With completion of the excavation process we are re-examining the total waste volume presently staged for shipment and will provide an updated estimate shortly. The total waste volume, including that which has already shipped, is in excess of 6000 tons. A larger than anticipated amount of LLRW was extracted from the southern portion of Section 2, the last material to have been excavated.

Other Site Activities:

1. Fenceline radiological surveys have been conducted weekly.
2. The trommel screener was removed from service is presently undergoing decontamination and will be radiologically released this week.



ENVIROCARE OF UTAH, LLC

SAFE AND SECURE

Planned Activities:

1. LLRW shipments are expected to continue through the end of October.
2. LLRW identified in Section 1 will be removed and staged in Section 3. This material has been identified in a discrete area assessable at the surface or with very limited excavation.
3. In accordance with requirements of the Radiological Material License, groundwater monitoring will take place during November.

Representative photos of site operations are shown below and on the following page.
Please let me know if you have any questions or require additional information regarding these activities.

Figure 1



Wayne is checking paperwork on this load. On a normal day, 10 trucks such as this one will leave the site with approximately 22 tons of material each.



ENVIROCARE OF UTAH, LLC

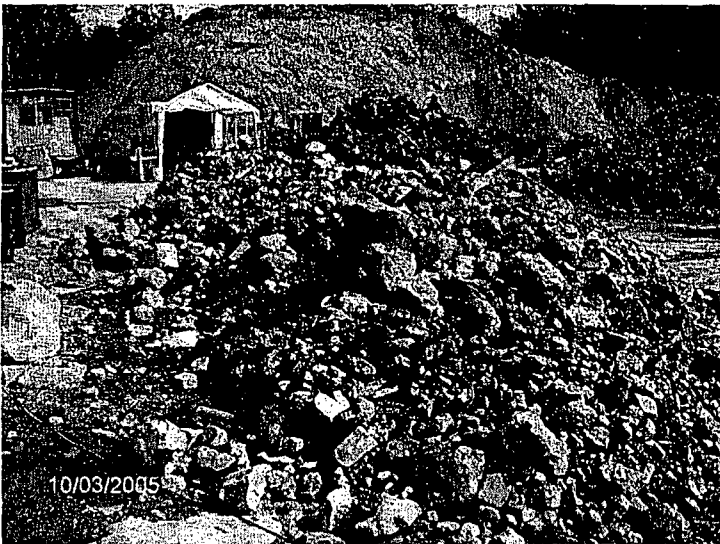
SAFE AND SECURE

Figure 2



The material loading of each truck actually takes about half of the total time expended on each load. While the driver is assembling the cover, Site HP Joe Trowbridge is surveying the vehicle for DOT compliance. In addition to the radiological documentation, the vehicle must be weighed and shipping manifest is endorsed.

Figure 3



This material is typical of the material being shipped. Truck bed have been lined to prevent damage from the larger slag pieces. In addition, damage is prevented by our equipment operator's technique of "laying down" the slag. This picture taken in Section 3 looking east from the property line with Greenville Metals, shows the steel debris pile and backfill soil in the background.