

## **B Assignment of Responsibility**

*In case of an emergency at the Station that requires activation of the Station Emergency Response Organization, various State, local, Federal and private sector organizations will contribute to the emergency response effort. This section describes the responsibilities of those organizations. Table B-1 lists the responsible primary organizations and the title of the individual in charge.*

### **B.1 Overall Responsibility**

*The Station has the responsibility for developing and maintaining an effective Emergency Plan. This is accomplished through the establishment of formal Emergency Plan implementing procedures, providing adequate training for the Emergency Response Organization per Section M of this Plan, establishing and maintaining emergency response facilities and equipment, and the establishment of appropriate partnerships with Federal, State, local government agencies and private organizations as identified in this section. The following tasks are part of the Station's responsibility:*

- *Recognize and declare the existence of an emergency condition.*
- *Classify the event in accordance with the methodology described in Section D of this Plan.*
- *Notify the appropriate Station personnel and offsite authorities.*
- *Request additional support as deemed necessary.*
- *Establish and maintain effective communications within the Station and with offsite response groups as described in Section E of this Plan.*
- *Continuously assess the status of the accident and periodically communicate the status information to the appropriate response groups and Federal authorities. This includes the collection and evaluation of onsite and offsite radiological monitoring data.*
- *Take protective measures onsite and recommend protective actions to offsite authorities.*
- *Monitor and control radiation exposures of personnel responding to the emergency and under the direction of the Station.*
- *Provide emergency information to the public through periodic press briefings in conjunction with State and local officials.*
- *Keep the Station Owners informed of the situation at the site.*

## **B.2 State of Texas Responsibility**

*State of Texas has developed a Radiological Emergency Management Plan as an integral part of the State of Texas Emergency Management Plan. The State of Texas Emergency Management Plan outlines the State organization for emergency activities. The Governor's Division of Emergency Management (DEM) is tasked with administering a program of Comprehensive Emergency Management. Designed to reduce the vulnerability of the citizens and communities of this State to damage, injury, and to loss of life and property by providing a system for the mitigation of, preparedness for, response to and recovery from natural or man-made disasters including fixed nuclear facilities. Established in the Office of the Governor by the Texas Disaster Act of 1975 (Government Code, Chapter 418) and direction of the Director of the Texas Office of Homeland Security (OHS). Office of Homeland Security Director appoints the State Coordinator to manage State Governor's Division of Emergency Management on a daily basis, and the Coordinator reports to the Director of the Office of Homeland Security. The Texas Disaster Act of 1975, as amended, authorizes the creation of local organizations for emergency management, provides the Governor and executive heads of governing bodies of the State certain emergency powers, and provides the rendering of mutual aid among the political subdivisions of the State, with other states, and with the Federal Government. The Chairperson of the Texas Emergency Management Council is responsible for establishing an emergency organization capable of operation over a protracted period. The duties and responsibilities of the principal and support agencies of the State of Texas are summarized below. A detailed discussion of the State's response is contained in the Texas Emergency Management Plan.*

### **B.2.1 Department of State Health Services (DSHS)**

*The Department of State Health Services, is the Lead State agency responsible for responding to all peacetime radiological emergencies throughout Texas. Under the procedure established by the Texas Emergency Management Plan and as reaffirmed in a Letter of Agreement, the Department of State Health Services responds to all types of radiological emergencies throughout the State. The Governor's Division of Emergency Management, upon notification by the Station of a Site Area Emergency or General Emergency, will notify key member agencies of the Emergency Management Council. The State Operations Center (SOC) is operational 24 hours a day, seven days a week. During radiological emergencies, the Department of State Health Services will be the Lead State agency for the assessment of radiological impact and damage to the environment. Once notified of a Site Area Emergency or General Emergency (or an Alert or Unusual Event which is likely to involve an offsite release), the Department of State Health Services will establish a communication link (telephone) from their office in Austin, Texas with Station dose assessment personnel. The Department of State Health Services estimates that it will take about one hour to activate their office after notification. The Department of State Health Services is able to make dose projections in their Austin, Texas office from data provided by the Station. If the situation warrants, the Department of State Health Services will dispatch Radiological Emergency Response Teams to the Station. The Department of State Health Services has estimated the onsite response time to emergencies at the Station*

to be approximately 4 hours, and the full Emergency Response Team response time to field locations around the Station to be approximately 8 hours.

### **B.2.2 Governor's Division of Emergency Management**

*The Governor's Division of Emergency Management has broad legal authority, in case of a radiological emergency, to take actions deemed necessary to protect the health and safety of Texas citizens. This authority includes, but is not limited to, control of public and private transportation corridors, and utilization of all public facilities in support of efforts to protect life and property. The Governor's Division of Emergency Management manages the State Operations Center (SOC), which is located at the Department of Public Safety Headquarters in Austin, Texas. The Department of Public Safety Sub District Office (Pierce, Texas), located approximately 45 miles from the Station, is the headquarters of the Disaster District serving the area around the Station.*

*The Texas Department of Public Safety provides the State with law enforcement services in emergency conditions. This includes but is not limited to disaster reconnaissance, emergency traffic control, and execution of evacuation control. These activities are conducted in support of local government, in accordance with the State of Texas basic Emergency Management Plan, and Annex E, Evacuation, and Annex G, Law Enforcement. The Department of Public Safety Commanding Officer in Sub-District 2C Pierce, Texas serves as Chairperson of the Disaster District Committee. The Department of Public Safety provides statewide communications service for direction of disaster operations. Requests for assistance from the County Emergency Operations Center are forwarded to the Disaster District Sub 2C in Pierce. Requests that exceed the District's ability to respond will be forwarded to the State Operations Center (SOC) in Austin.*

*Response time for Department of Public Safety personnel from the Disaster District Office in Pierce to the Station is approximately 2 hours.*

### **B.3 Matagorda County Responsibility**

*Matagorda County, Texas, has developed an Emergency Management Plan to provide for emergency operations within Matagorda County, Texas, including Bay City, Palacios, and the unincorporated towns within the County proper. The Matagorda County and city governments are responsible to their respective citizens to do everything possible to save lives, minimize damage, alleviate suffering and to help restore and rehabilitate property and society in the event of a natural disaster, man-made incident, or national emergency, including nuclear attack or threat thereof. Existing forms of local government are utilized in the formulation and implementation of this Plan. The organization and operational concepts set forth in this Plan are promulgated under the Texas Disaster Act of 1975, as amended, the Matagorda County Commissioner Court order of 1983 (reissued 1994), and other laws and ordinances detailed in the Matagorda County Emergency Management Plan. The Matagorda County Emergency Management Plan is a stand-alone document that supports the State of Texas Emergency Management Plan and the Station Emergency Plan. Under the Matagorda County Emergency Management Plan, the County Judge, the Commissioners and Mayors, as chief elected officials are responsible for all*

*emergency measures within their respective jurisdictions, including recommending shelter and or evacuation of members of the public.*

*Existing agencies of government in Matagorda County, Bay City, and Palacios will perform emergency activities related to those performed in normal operations. The basic functions of County/City officials are to coordinate activities for efficiency and effectiveness and to assure that any skills not normally available in existing County/City governments are obtained from other resources. The County is the lead governmental entity in an emergency. Should the need arise for State assistance, the County Emergency Management Director has the authority to request assistance from State Disaster District Sub 2C in Pierce, Texas. This responsibility is assigned to the County Emergency Management Director and is not a delegable authority. The Emergency Management Coordinator is appointed by the County Judge. The primary responsibility of the Emergency Management Coordinator is to coordinate emergency response within the county and serve as communications liaison with the Governor's Division of Emergency Management and the Disaster District Committee for day-to-day operations and through the Disaster District during emergencies. A detailed assignment of emergency response actions and responsibilities are defined in the Matagorda County Emergency Management Plan. Figure B-1 indicates the interface of State of Texas and local and civil authorities' Emergency Management Organizations.*

#### **B.4 Other Local, State, and Federal Agencies**

*Additional local, State, and Federal agencies and departments and their responsibilities that provide outside support to the Station in the event of a declared emergency are:*

##### **B.4.1 Bay City Police Department**

*The Bay City Police Department, by Letter of Agreement, will provide law enforcement support to the Station to assist in traffic control, personnel evacuation, or other response requiring law enforcement as needed during an emergency or drill/exercise situation. The Bay City Police Department will be under the control and coordination of the Matagorda County Sheriff's Office. Bay City Police Department and the Matagorda County Sheriff's Office personnel are headquartered approximately 17 road miles northeast of the Station and can respond to the Station in approximately one hour. This service is available 24 hours per day.*

##### **B.4.2 City of Palacios Police Department**

*The City of Palacios Police Department, by Letter of Agreement, will provide law enforcement support to the Station to assist in traffic control, personnel evacuation, or other response requiring law enforcement as needed during an emergency or drill/exercise situation. The City of Palacios Police Department will be under the direction and control of the Matagorda County Sheriff's Office. The City of Palacios Police Department is headquartered approximately 18 road miles southwest of the Station and can respond to the Station in approximately thirty minutes. This service is available 24 hours per day.*

**B.4.3 City of Palacios Volunteer Fire Department**

*The City of Palacios Volunteer Fire Department, by Letter of Agreement, will provide fire-fighting support, and rescue services to the Station in case of an emergency or drill/exercise situation at the Station. The City of Palacios Volunteer Fire Department is located approximately 18 road miles from the Station and has a response time of thirty minutes when responding to requests for assistance from the Station. This service is available 24 hours per day.*

**B.4.4 The Bay City Volunteer Fire Department**

*The Bay City Volunteer Fire Department, by Letter of Agreement, will provide fire fighting support services to the Station in case of an emergency or drill/exercise situation at the Station. The Bay City Volunteer Fire Department is located approximately 17 road miles from the Station and can respond to emergencies at the Station in approximately one-hour. This service is available 24 hours per day.*

**B.4.5 The Matagorda County Hospital District**

*The Matagorda County Hospital District, by Letter of Agreement, will provide medical care for both conventional and radiological injuries that occur in emergency or drill/exercise situations at the Station. The Matagorda County Hospital District provides services via two hospitals in the district, Matagorda General Hospital, located approximately 21 road miles from the Station in Bay City, and Palacios Community Medical Center located approximately 16 road miles from the Station in Palacios. The Matagorda General Hospital maintains a fully staffed Emergency Room that is equipped with a decontamination facility within the emergency room area to handle emergencies arising at the Station. Matagorda General Hospital in Bay City shall serve as the primary response organization with secondary support provided by Palacios Community Medical Center. These services and facilities are available 24 hours per day.*

**B.4.6 Emergency Alert System Stations**

- *Emergency Alert System Station KMKS FM, 102.5 Radio, by Letter of Agreement, shall serve as the primary Matagorda County Emergency Alert System Station serving the Station by having the capability of providing 24 hour per day Emergency Alert Service, including activation of the alert radios.*
- *Emergency Alert System Station KZRC FM, 92.5 Radio, by Letter of Agreement shall serve as the alternate Matagorda County Emergency Alert System Station.*

**B.4.7 Matagorda County Sheriff's Office**

*The Matagorda County Sheriff's Office by letter of agreement will assist the Station in responding to an emergency. The Emergency Management Plan for Matagorda County identifies the responsibilities for the Sheriff's Office as law enforcement, evacuation/traffic control, communications, warning/notifications and maintenance of the Matagorda County Emergency Operations Center. The Matagorda County Sheriff's Office will respond to requests to provide assistance during emergency or drill/exercise situations that develop at the Station. The Matagorda County Sheriff's*

Office has the capability to respond to a request for assistance from the Station in approximately thirty minutes, on a 24 hours a day basis.

#### **B.4.8 United States Coast Guard (Corpus Christi)**

The United States Coast Guard, by Letter of Agreement will provide vessel traffic control on the Colorado River and other navigable waters in the vicinity of the Station by the use of marine warnings, and if necessary, aircraft and surface craft during emergency situations that may develop at the Station. The Coast Guard responds to requests, from the Matagorda County Sheriff's Office, for assistance from Corpus Christi District. Estimated time of response for the Coast Guard is within approximately four hours, on a 24 hours a day basis.

#### **B.4.9 United States Coast Guard (Galveston)**

The United States Coast Guard, by Letter of Agreement will provide vessel traffic control on the Colorado River and other navigable waters in the vicinity of the Station by the use of marine warnings, and if necessary, aircraft and surface craft during emergency situations that may develop at the Station. The Coast Guard responds to requests, from the Matagorda County Sheriff's Office, for assistance from Galveston District. Estimated time of response for the Coast Guard is within approximately four hours, on a 24 hours a day basis.

#### **B.4.10 Resources of Other Federal Agencies**

The resources of Federal agencies appropriate to the emergency condition will be made available in accordance with the ~~Federal Radiological Emergency Response Plan~~. Federal National Response Plan. The Station Emergency Director is specifically authorized to request Federal assistance on behalf of the Station under the provisions of the ~~Federal Radiological Emergency Response Plan~~. Federal National Response Plan. Nuclear Radiological Incident Annex. The Station Emergency Director requests Federal assistance by contacting the NRC. In addition to the NRC, agencies other than those with a Letter of Agreement with the Station that may become involved are the Department of Energy, the DHS-Federal Emergency Management Agency, and the Environmental Protection Agency. These Agencies have the capability of responding to a declared emergency at the Station in approximately twelve hours, on a 24 hours a day basis.

#### **B.4.11 Department of Homeland Security-Federal Emergency Management Agency**

The Federal Emergency Management Agency, Region VI, is responsible for overall coordination of the offsite Federal response effort. The senior Federal Emergency Management Agency official from Region VI will carry out the functions and responsibilities outlined in NUREG-0981.

The Region VI Emergency Response Team will, in addition to the region office response, provide support to State and County authorities in the area of resource coordination, logistics, and telecommunications. The senior Federal Emergency Management Agency official, or designee, will notify the appropriate Federal agency capable of meeting a Specific State or County government need. The Federal

*Emergency Management Agency can respond to a declared accident at the Station in approximately ten hours.*

**B.4.12 Nuclear Regulatory Commission (NRC)**

~~The Nuclear Regulatory Commission~~ The NRC is notified of an incident via the Emergency Notification System telephone line, the initial NRC response is to ascertain the status of the plant and monitor Station activities. The NRC will assess offsite radiological effects and will develop projection of onsite and offsite effects for use by other Federal, State, and local agencies, as appropriate.

To ensure reports can be made, NRC Headquarters Operations Center maintains a 24-hour emergency telephone and duty officer. The NRC Region IV Response Team, located in Arlington, Texas, has the capability of responding in approximately five hours. The leader of this response team will normally be the Region IV Regional Administrator, assuming the role as NRC Director of Site Operations, when so directed by the NRC Chairperson.

**B.5 Private Sector Organizations**

*Private Sector and Contract Organizations include various groups that will provide support and services to the Station as follows:*

**B.5.1 Westinghouse Electric Company**

*Westinghouse Electric Company has established a contract with the Station to provide general services related to nuclear steam supply operation during and following an accident situation. Westinghouse provides a capability to respond on a 24 hour a day basis.*

**B.5.2 ABWR Nuclear Steam Supply Services**

Services provided by an ABWR NSSS vendor during an emergency event at STP will be obtained once an appropriate contract award has occurred. The vendor will be required to establish a contract with the Station to provide general services related to nuclear steam supply operation during and following an accident situation. The vendor will be required to provide the capability to respond on a 24 hour a day basis. (COM EP-1)

**B.5.3 Memorial Hermann Hospital System**

*Memorial Hermann Hospital System- by Letter of Agreement, serves as a referral source for long-term care of radiological injuries. Memorial Hermann Hospital System is available 24 hours per day for consultation or treatment of personnel who have been internally contaminated or may have received an acute dose of radiation. Memorial Hermann Hospital System located in Houston, Texas is approximately 70 air miles from the Station.*

**B.5.4 Lyondell Chemicals, LP and OXEA Chemicals**

*Lyondell Chemicals, LP (Matagorda Operations) and OXEA Chemicals (Bay City Plant) - by separate Letters of Agreement, will notify the Station of emergencies*

occurring at their plants which could involve offsite chemical releases, on a 24 hours a day basis.

**B.5.5 Best Western Matagorda Hotel and Conference Center**

Best Western Matagorda Hotel and Conference Center by Letter of Agreement and contract with the Station will place the facility at the disposal of the Utility during a declared emergency at the Station, on a 24-hour a day basis. This includes the use of a meeting room/ball room for conversion to the Joint Information Center. The Best Western Matagorda Hotel and Conference Center is located approximately 15 road miles from the Station.

**B.5.6 American Red Cross Rio Colorado Chapter**

American Red Cross Matagorda Rio Colorado Chapter - by Letter of Agreement, will provide assistance at the Reception Center for registration of residents and site employees evacuated because of a nuclear power plant event, and will provide for emergency needs by organizing congregate care facilities providing services necessary to support the evacuated population. The American Red Cross will participate in training, drills and exercises on request. These and other responsibilities of this agency are identified in the Emergency Management Plan for Matagorda County, Bay City and Palacios. The American Red Cross supports that Plan and the Emergency Preparedness Program at the Station. The Matagorda County Office of the American Red Cross is located in Bay City approximately 17 road miles from the Station and their service is available 24 hours per day.

**B.5.7 Matagorda County EMS**

Matagorda County EMS by Letter of Agreement; will provide 24 hour per day ambulance service to the Station in case of an emergency or drill/exercise situation. Matagorda County EMS response time to the station is approximately thirty minutes.

**B.5.8 Institute of Nuclear Power Operations (INPO)**

Institute of Nuclear Power Operations by Letter of Agreement will provide assistance in acquiring the help of other organizations in the industry on a 24 hours a day basis. In addition, INPO will provide assistance, utilizing its own resources, as requested and as appropriate.

**B.5.9 American Nuclear Insurers**

The Station maintains a policy with American Nuclear Insurers. American Nuclear Insurers has agreed to assume responsibility, except where excluded by the policy, for promptly assisting members of the public whom may be adversely affected by an incident at the Station.

**B.5.10 TXU Power (Comanche Peak Steam Electric Station)**

TXU Power by Letter of Agreement will in case of an emergency at the South Texas Project and loss of onsite analysis capabilities, support the Station by performing selected post accident analysis.



**B.5.11 Areva NP Inc.**

*Areva NP Inc.: by Letter of Agreement will provide assistance in the radioanalyses of environmental samples or personnel dosimetry as requested.*

**B.5.12 Bay City Independent School District**

*Bay City Independent School District by Letter of Agreement will provide evacuation services (busses, drivers, reception centers and congregate care facilities) to Matagorda County or the Station in case of an accident at the Station.*

**B.5.13 Matagorda Independent School District**

*Matagorda Independent School District by Letter of Agreement will perform early dismissal of students at the Alert classification, and evacuation of students to the Linnie Roberts Elementary School at the Site Area or General Emergency classification.*

**B.5.14 Palacios Independent School District**

*Palacios Independent School District by Letter of Agreement will provide evacuation services (busses, drivers, reception centers and congregate care facilities) to Matagorda County or the Station in case of an accident at the Station.*

**B.5.15 Tidehaven Independent School District**

*Tidehaven Independent School District by Letter of Agreement will perform early dismissal of students at the Alert classification, and evacuation of students to the appropriate Reception Center at the Site Area Emergency classification.*

**B.5.16 Van Vleck Independent School District**

*Van Vleck Independent School District by Letter of Agreement will provide evacuation services (busses, drivers) to Matagorda County or the Station in case of an accident at the Station.*

**B.5.17 Matagorda County Environmental Health**

*Matagorda County Environmental Health by Letter of Agreement, will assist the Station on a 24 hours per day basis, or as needed, during an emergency situation at the Station. provide radiological supplies, equipment, monitoring and decontamination for the offsite response organization.*

**B.5.18 City of Bay City**

*City of Bay City - by Letter of Agreement, will make the Bay City Service Center available in case of the in-operability of the Station Emergency Operations Facility.*

**B.5.19 South Texas Project Operating Agreement**

*South Texas Project Operating Agreement is an agreement among Co-Owners for South Texas Project operations.*

## **B.6 Emergency Organization**

*The Emergency Preparedness program for the Station requires the coordinated response of several organizations. The Emergency Director is the key individual in the Station Emergency Response Organization. The Station Emergency Response Organization is described fully in Section C of this Plan.*

### **B.6.1 Station Emergency Director**

*The Station Emergency Director initiates the activation of the offsite Emergency Response Organizations by contacting the Governor's Division of Emergency Management via the Department of Public Safety Offices in Pierce, Texas, the Matagorda County Sheriff's Office, and the Nuclear Regulatory Commission. All these organizations are staffed 24 hours per day to provide communications links for receiving notification of a radiological emergency. The Federal agencies which may be requested by the Station to provide assistance can be notified by contacting the Nuclear Regulatory Commission on a dedicated communication link, the Emergency Notification System line.*

### **B.6.2 State of Texas and Matagorda County**

*The State of Texas and Matagorda County response is conducted in accordance with the following framework as presented in the State of Texas Emergency Management Plan and the Matagorda County Emergency Management Plan.*

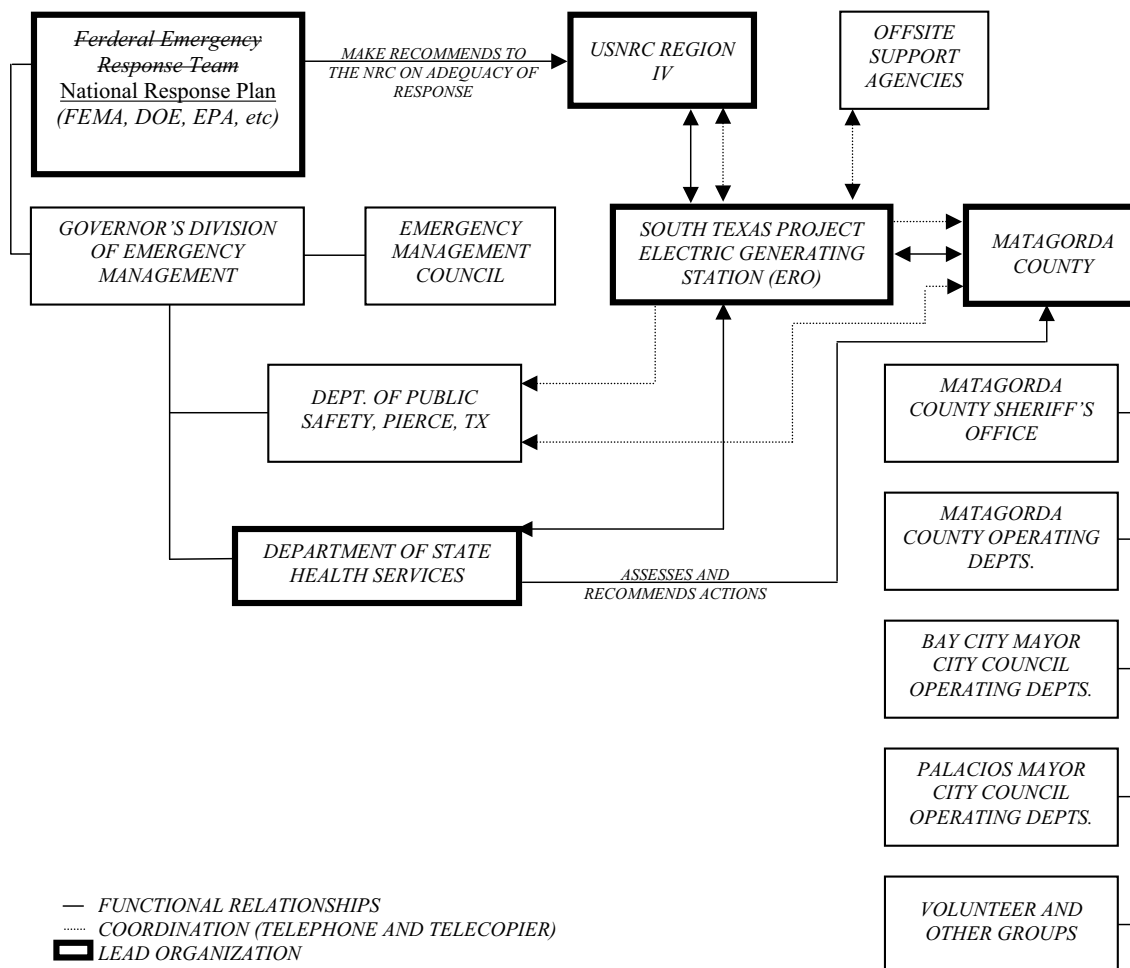
- *The Governor's Division of Emergency Management is responsible for coordinating state-level response and recovery activities during emergencies and disasters regardless of cause. The Department of State Health Services, has been designated as the primary agency for radiological emergencies. The Matagorda County Judge and the Mayors of Bay City and Palacios exercise overall authority for offsite protective actions and measures for the safety and protection of local personnel and property. Overall, direction and control of state response activities will be exercised by the Sub 2C Disaster District Committee Chairperson (Department of Public Safety highway patrol lieutenant) operating from the Emergency Operations Center located in Pierce. The Chairperson will be kept informed of conditions in a timely manner in order to facilitate state response and assistance. The Matagorda County Emergency Operations Center is the direction and control point for county and city response activities for an emergency at the Station.*
- *Upon declaration of a classified emergency, ~~if~~ the State is notified of an emergency at the Station by the Station's Emergency Director via a call to the Department of Public Safety Communication Center located at Disaster District Sub 2C, Pierce, Texas, on the dedicated ringdown telephone. The Communications Center at the Department of Public Safety, Pierce, will notify the Governor's Division of Emergency Management of any emergency notification from the Station. The Governor and Chairperson of the Emergency Management Council are notified by the State Coordinator or the Governor's Division of Emergency Management Duty Officer, depending on the severity of the situation. Notification of a station emergency is from the Governor's Division of Emergency Management to the*

*Texas Department of Health and in turn to the Department of State Health Services. The decision to activate the Radiological Response Team is based on the severity of the incident. ~~The Station's Emergency Director initiates a declaration of Unusual Event, Alert, Site Area Emergency, or General Emergency.~~ The Governor, by executive order or proclamation, may declare a state of disaster. The presiding officer of the governing body of a political subdivision may also declare a local state of disaster. A state of disaster condition activates disaster response, recovery, and rehabilitation aspects of the State Emergency Plan. The Matagorda County Sheriff's Office also has access to the dedicated ringdown telephone, and will be notified of an emergency classification at the Station when the Department of Public Safety Disaster District Sub 2C office is notified.*

- *When requested to assist in response and recovery efforts to radiation emergencies, personnel from other State of Texas Agencies will perform functions and activities as described in the State of Texas Emergency Management Plan.*
- *Local officials shall provide notification to the various personnel in the Matagorda County Emergency Management Organization in accordance with County Procedures. The Matagorda County Sheriff is responsible to verify that notifications are made in accordance with details provided in the Matagorda County Emergency Management Plan.*

**Table B-1 Responsible Primary Organizations**  
**Page 1 of 1**

<b>Organizations</b>	<b>Individual in Charge</b>
<i>South Texas Project Electric Generating Station</i>	<i><u>Station</u> Emergency Director</i>
<i>State of Texas</i>	<i>Governor</i>
<i>State of Texas Emergency Management Council</i>	<i>Chairperson, Emergency Management Council</i>
<i>Governor's Division of Emergency Management</i>	<i>State Coordinator</i>
<i>Department of State Health Services</i>	<i>Bureau Chief</i>
<i>Matagorda County Emergency Management Organization</i>	<i>Emergency Management Director (County Judge or Mayor(s) and County Commissioners)</i>
<i>Bay City Emergency Management Organization</i>	<i>Mayor</i>
<i>City of Palacios Emergency Management Organization</i>	<i>Mayor</i>
<i>Matagorda County Sheriff's Office</i>	<i>Sheriff</i>



**Figure B-1 Interrelationship of Emergency Response Organizations**

