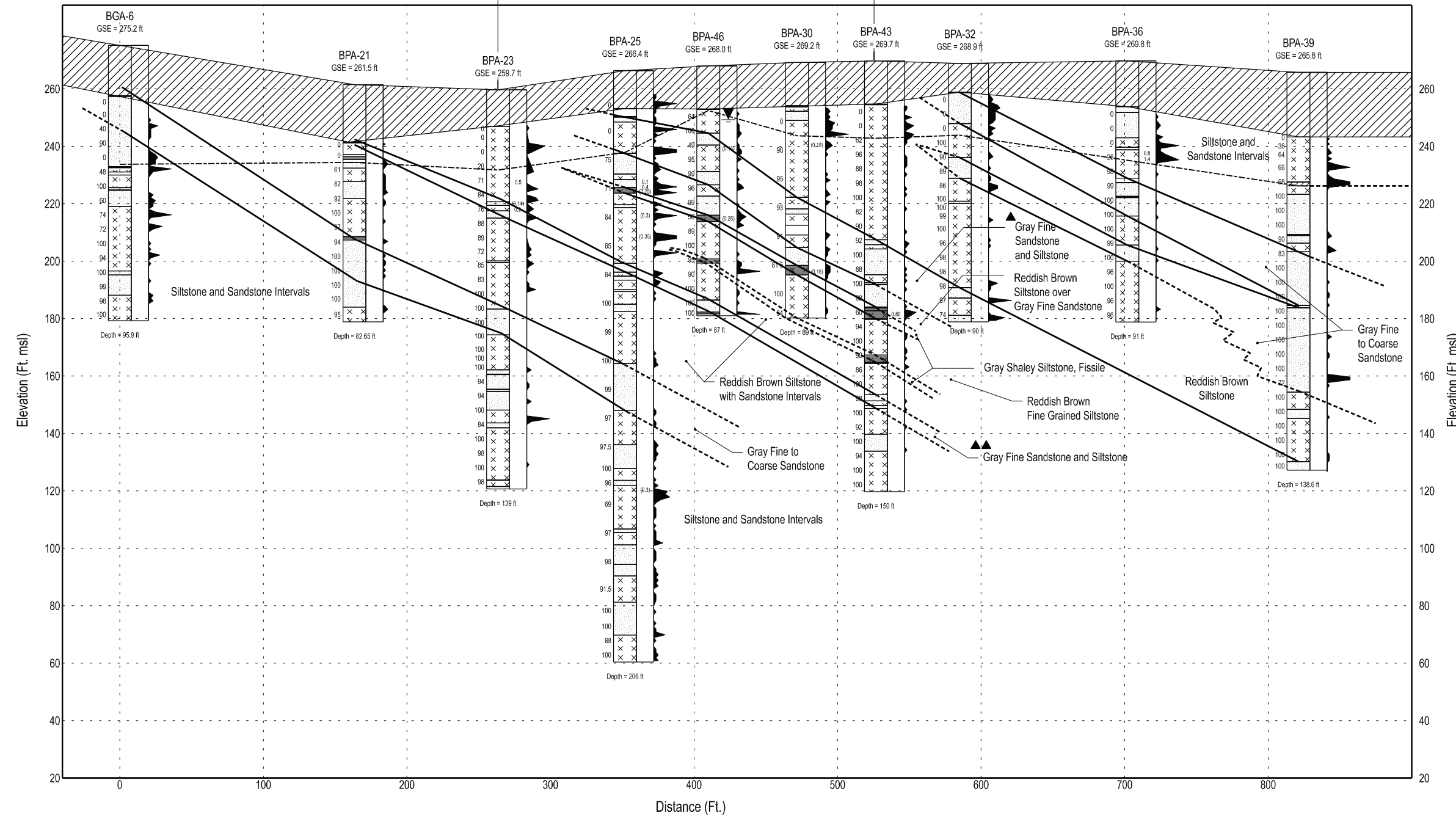


Plant South (S65W)

Plant North (N65E)

Extent of Nuclear Island -  
Excavation to 220 Ft. msl



**LEGEND**

- ▲ HAR 3 Marker Bed A
- ▲▲ HAR 3 Marker Bed B
- ▼ Ground Water Level
- Interpreted Lithology Correlation
- - - - Possible Lithology Correlation
- · - · - Top of Sound Rock  
(See Table 2.5.4-201 for definition)
- ☐ Conglomerate
- ☐ Sandstone
- ☐ Shale
- ☐ Shaley Siltstone and Sandstone
- ☐ Siltstone
- ☐ Soil (N<50/3")

Vertical Scale: 1" = 40.0'  
Horizontal Scale: 1" = 80.0'

**DETAIL:**

- Borehole I.D. → BPA-XX
- Ground Surface → GSE = XXX.X ft  
Elevation (Ft. msl)
- Extent of Soil (SPT "N" < 50/3")
- Lithologic Symbol
- RQD → 0.4
- Observed Clay Seam Thickness in Rock Core (Ft.)
- Fractures Per Foot

**NOTES:**

1. Clay seams or fracture zones with total clay thickness >0.1 ft. thick are shown at their approximate observed elevation. Values in parenthesis ( ) indicate total clay thickness within fraction intervals.
2. See Table 2.5.4-201 for depths and descriptions of soil and top of sound rock.
3. See Figure 2.5.4-202 for Cross Section locations.

Progress Energy Carolinas  
**Shearon Harris Nuclear Power Plant  
 Units 2 and 3**  
**Part 2, Final Safety Analysis Report**  
 New Hill, North Carolina

---

Stratigraphic Cross Section at HAR 3 - Plant  
 South to North  
 FIGURE 2.5.4-205A

Rev. 0