

LEGEND

- * HAR 2 Marker Bed A
- ** HAR 2 Marker Bed B
- ▾ Ground Water Level
- Interpreted Lithology Correlation
- - - - Possible Lithology Correlation
- · - · - Top of Sound Rock (See Table 2.5.4-201 for definition)
- Conglomerate
- Sandstone
- Shale
- Shaley Siltstone and Sandstone
- Siltstone
- Soil (N<50/3")

Vertical Scale: 1" = 40.0'
Horizontal Scale: 1" = 80.0'

DETAIL:

- Borehole I.D. → BPA-XX
- Ground Surface → GSE = XXX.X ft
- Elevation (Ft. msl)
- Extent of Soil (SPT "N" < 50/3")
- Lithologic Symbol
- RQD → 0.4
- Observed Clay Seam Thickness in Rock Core (Ft.)
- Fractures Per Foot

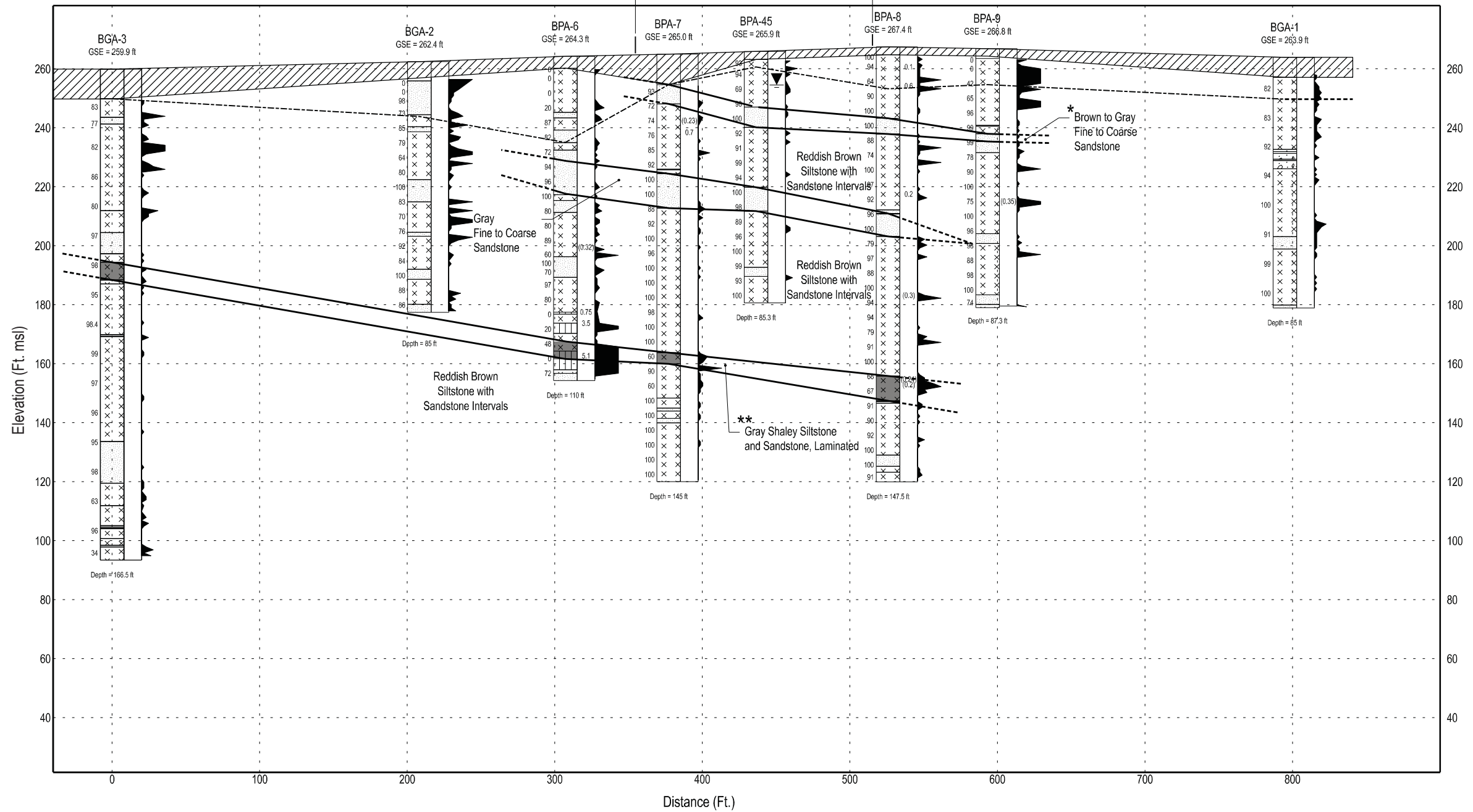
NOTES:

1. Clay seams or fracture zones with total clay thickness >0.1 ft. thick are shown at their approximate observed elevation. Values in parenthesis () indicate total clay thickness within fraction intervals.
2. See Table 2.5.4-201 for depths and descriptions of soil and top of sound rock.
3. See Figure 2.5.4-202 for Cross Section locations.

Plant West (N25W)

Plant East (S25E)

Extent of Nuclear Island -
Excavation to 220 Ft. msl



Progress Energy Carolinas
**Shearon Harris Nuclear Power Plant
Units 2 and 3**
Part 2, Final Safety Analysis Report
New Hill, North Carolina

Stratigraphic Cross Section at HAR 2 -
Plant West to East
FIGURE 2.5.4-204B Rev. 0