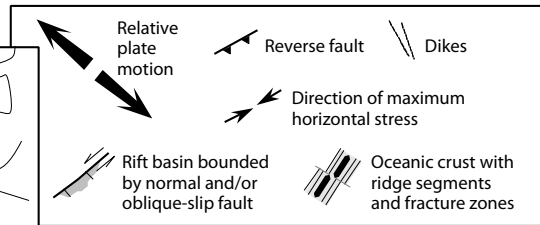
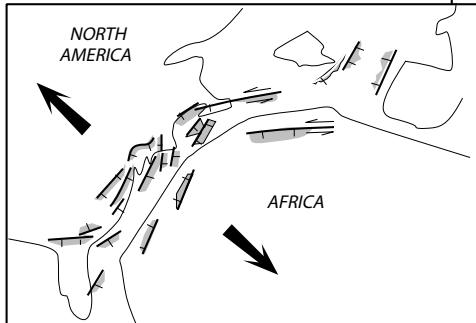
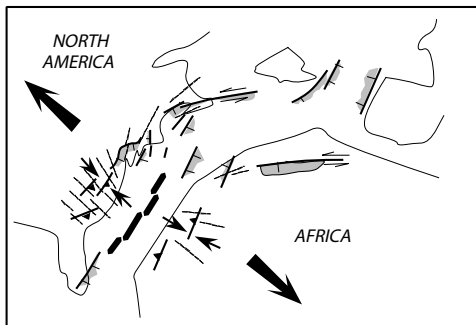


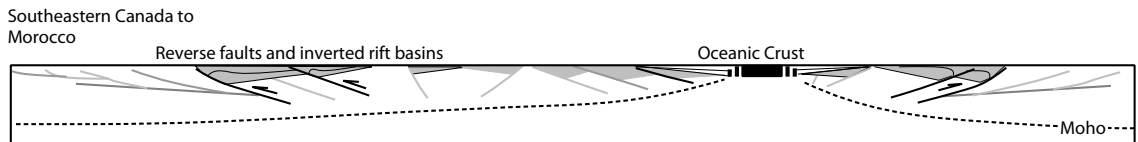
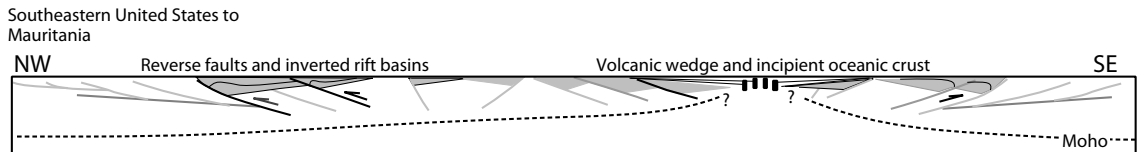
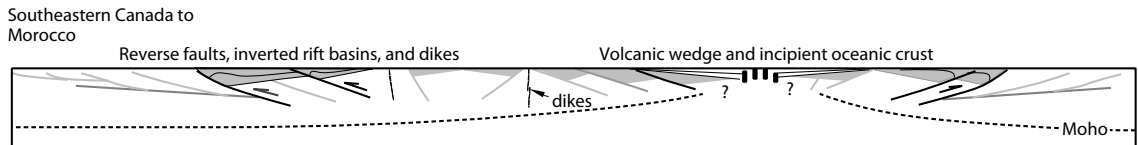
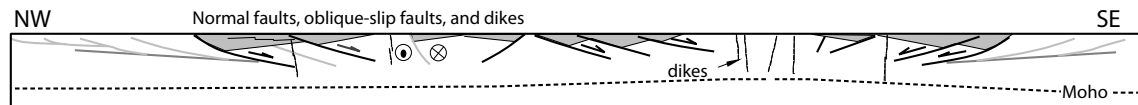
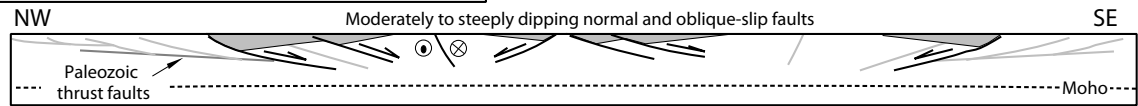
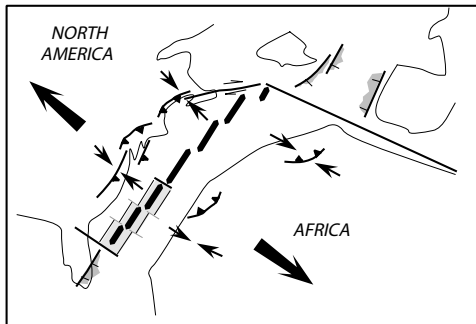
(a)



(b)



(c)



Notes: (a) Middle to Late Triassic: northeast-striking basins developed, subsiding and filling with sediments. (b) Late Triassic to Early Jurassic, shortly before to after eastern North America (ENA) magmatic activity: in the southeastern United States, rifting ceased, and northeast-striking reverse faults and associated folds developed; ENA magmatic activity led to the emplacement of northwest-striking dikes. (c) Early Jurassic (after ENA magmatic activity) to Early Cretaceous: full-fledged drifting began between the southeastern United States and western Africa.

Source: Withjack et al. (1998)

Progress Energy Carolinas
**Shearon Harris Nuclear Power Plant
 Units 2 and 3
 Part 2, Final Safety Analysis Report**
 New Hill, North Carolina

Sketches Showing Evolution of
 Central Eastern North America
 during the Mesozoic
 FIGURE 2.5.1-206

Rev. 0