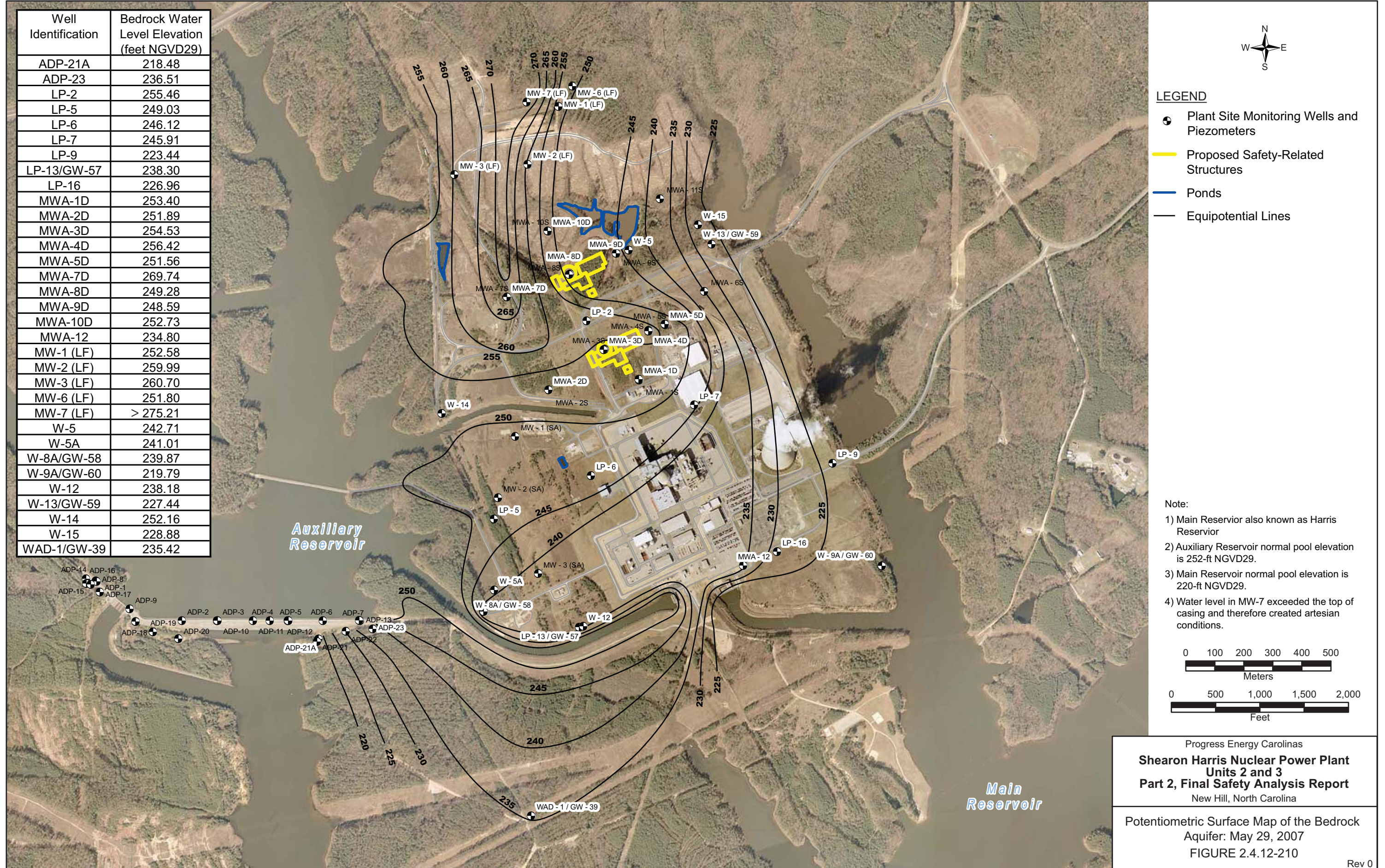
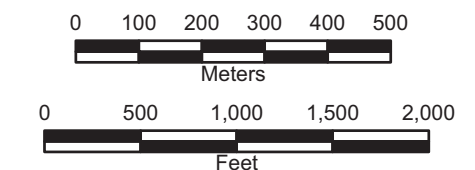


Well Identification	Bedrock Water Level Elevation (feet NGVD29)
ADP-21A	218.48
ADP-23	236.51
LP-2	255.46
LP-5	249.03
LP-6	246.12
LP-7	245.91
LP-9	223.44
LP-13/GW-57	238.30
LP-16	226.96
MWA-1D	253.40
MWA-2D	251.89
MWA-3D	254.53
MWA-4D	256.42
MWA-5D	251.56
MWA-7D	269.74
MWA-8D	249.28
MWA-9D	248.59
MWA-10D	252.73
MWA-12	234.80
MW-1 (LF)	252.58
MW-2 (LF)	259.99
MW-3 (LF)	260.70
MW-6 (LF)	251.80
MW-7 (LF)	> 275.21
W-5	242.71
W-5A	241.01
W-8A/GW-58	239.87
W-9A/GW-60	219.79
W-12	238.18
W-13/GW-59	227.44
W-14	252.16
W-15	228.88
WAD-1/GW-39	235.42



- LEGEND**
- Plant Site Monitoring Wells and Piezometers
 - Proposed Safety-Related Structures
 - Ponds
 - Equipotential Lines

- Note:
- 1) Main Reservoir also known as Harris Reservoir
 - 2) Auxiliary Reservoir normal pool elevation is 252-ft NGVD29.
 - 3) Main Reservoir normal pool elevation is 220-ft NGVD29.
 - 4) Water level in MW-7 exceeded the top of casing and therefore created artesian conditions.



Progress Energy Carolinas
**Shearon Harris Nuclear Power Plant
 Units 2 and 3
 Part 2, Final Safety Analysis Report**
 New Hill, North Carolina

Potentiometric Surface Map of the Bedrock
 Aquifer: May 29, 2007
 FIGURE 2.4.12-210