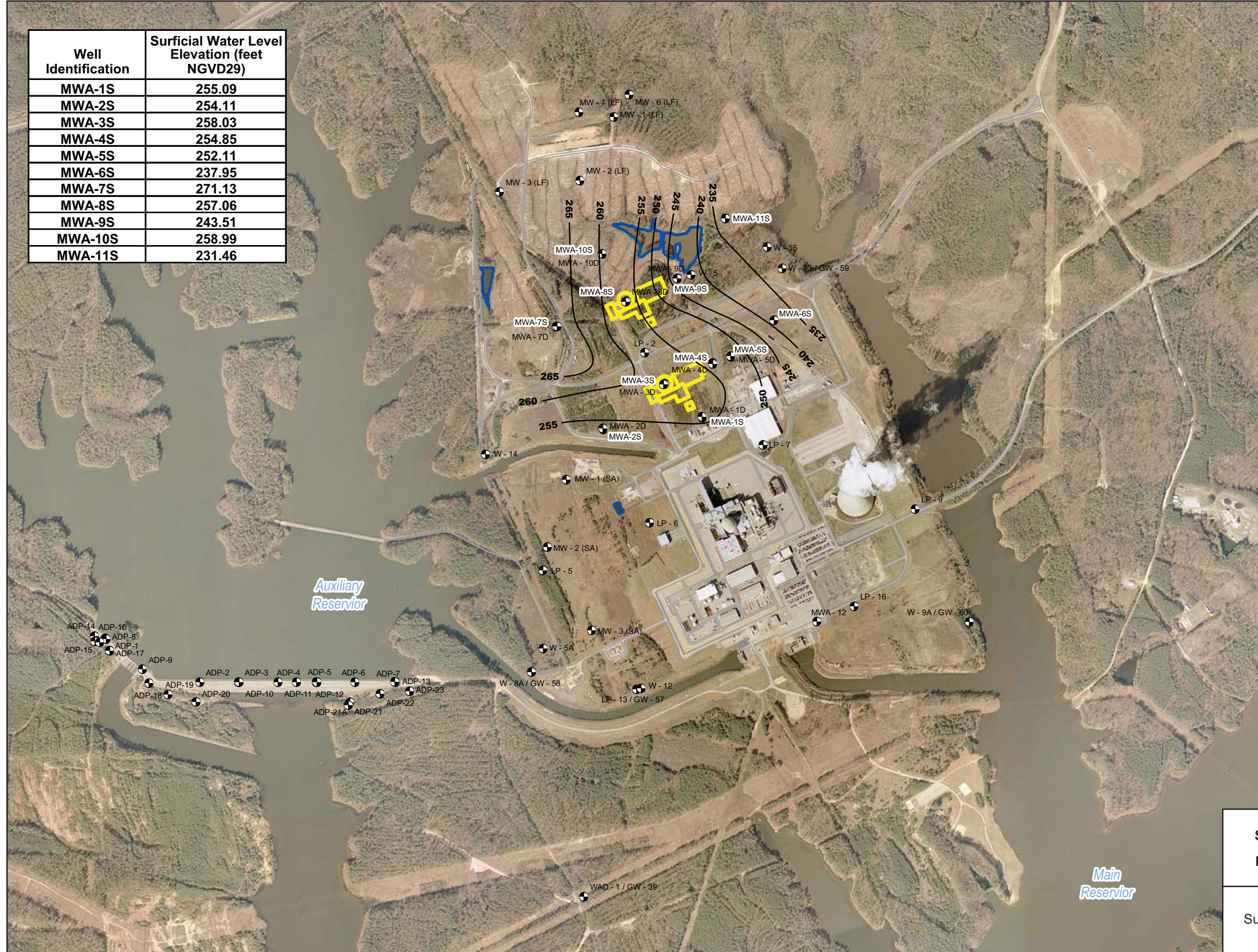


Well Identification	Surficial Water Level Elevation (feet NGVD29)
MWA-1S	255.09
MWA-2S	254.11
MWA-3S	258.03
MWA-4S	254.85
MWA-5S	252.11
MWA-6S	237.95
MWA-7S	271.13
MWA-8S	257.06
MWA-9S	243.51
MWA-10S	258.99
MWA-11S	231.46

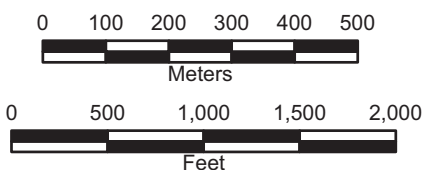


LEGEND

- Plant Site Monitoring Wells and Piezometers
- Proposed Safety-Related Structures
- Ponds
- Equipotential Lines



- Note:
- 1) Main Reservoir also known as Harris Reservoir
 - 2) Auxiliary Reservoir normal pool elevation is 252-ft NGVD29.
 - 3) Main Reservoir normal pool elevation is 220-ft NGVD29.



Progress Energy Carolinas
**Shearon Harris Nuclear Power Plant
 Units 2 and 3**
Part 2, Final Safety Analysis Report
 New Hill, North Carolina

Potentiometric Surface Map of the
 Surficial/Overburen Aquifer: May 29, 2007
 FIGURE 2.4.12-209