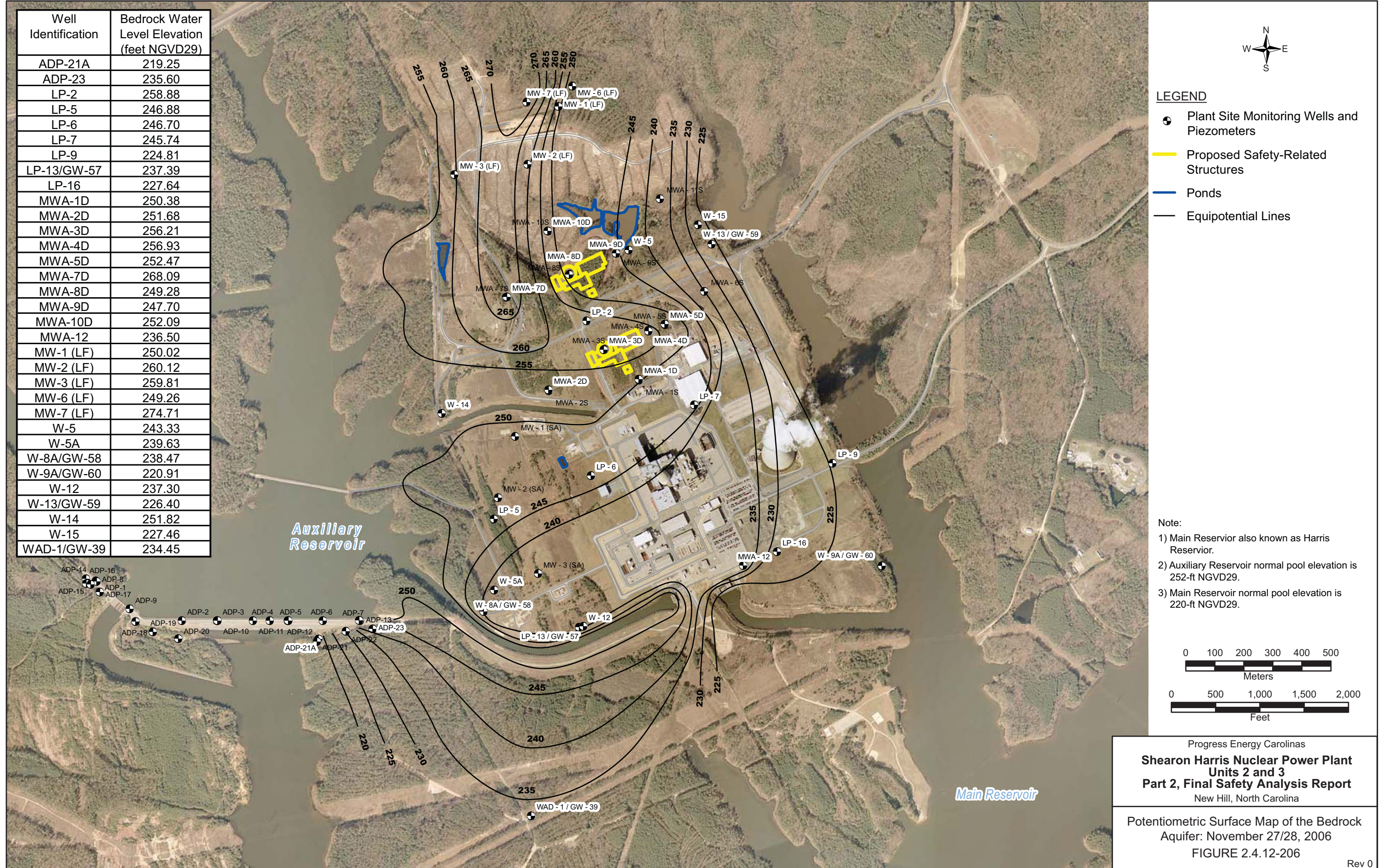
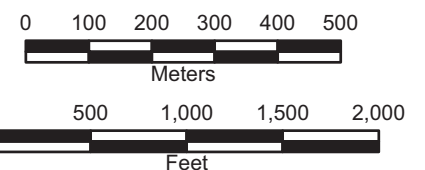


Well Identification	Bedrock Water Level Elevation (feet NGVD29)
ADP-21A	219.25
ADP-23	235.60
LP-2	258.88
LP-5	246.88
LP-6	246.70
LP-7	245.74
LP-9	224.81
LP-13/GW-57	237.39
LP-16	227.64
MWA-1D	250.38
MWA-2D	251.68
MWA-3D	256.21
MWA-4D	256.93
MWA-5D	252.47
MWA-7D	268.09
MWA-8D	249.28
MWA-9D	247.70
MWA-10D	252.09
MWA-12	236.50
MW-1 (LF)	250.02
MW-2 (LF)	260.12
MW-3 (LF)	259.81
MW-6 (LF)	249.26
MW-7 (LF)	274.71
W-5	243.33
W-5A	239.63
W-8A/GW-58	238.47
W-9A/GW-60	220.91
W-12	237.30
W-13/GW-59	226.40
W-14	251.82
W-15	227.46
WAD-1/GW-39	234.45



- LEGEND**
- Plant Site Monitoring Wells and Piezometers
 - Proposed Safety-Related Structures
 - Ponds
 - Equipotential Lines

- Note:**
- 1) Main Reservoir also known as Harris Reservoir.
 - 2) Auxiliary Reservoir normal pool elevation is 252-ft NGVD29.
 - 3) Main Reservoir normal pool elevation is 220-ft NGVD29.



Progress Energy Carolinas
**Shearon Harris Nuclear Power Plant
 Units 2 and 3**
Part 2, Final Safety Analysis Report
 New Hill, North Carolina

Potentiometric Surface Map of the Bedrock
 Aquifer: November 27/28, 2006
 FIGURE 2.4.12-206