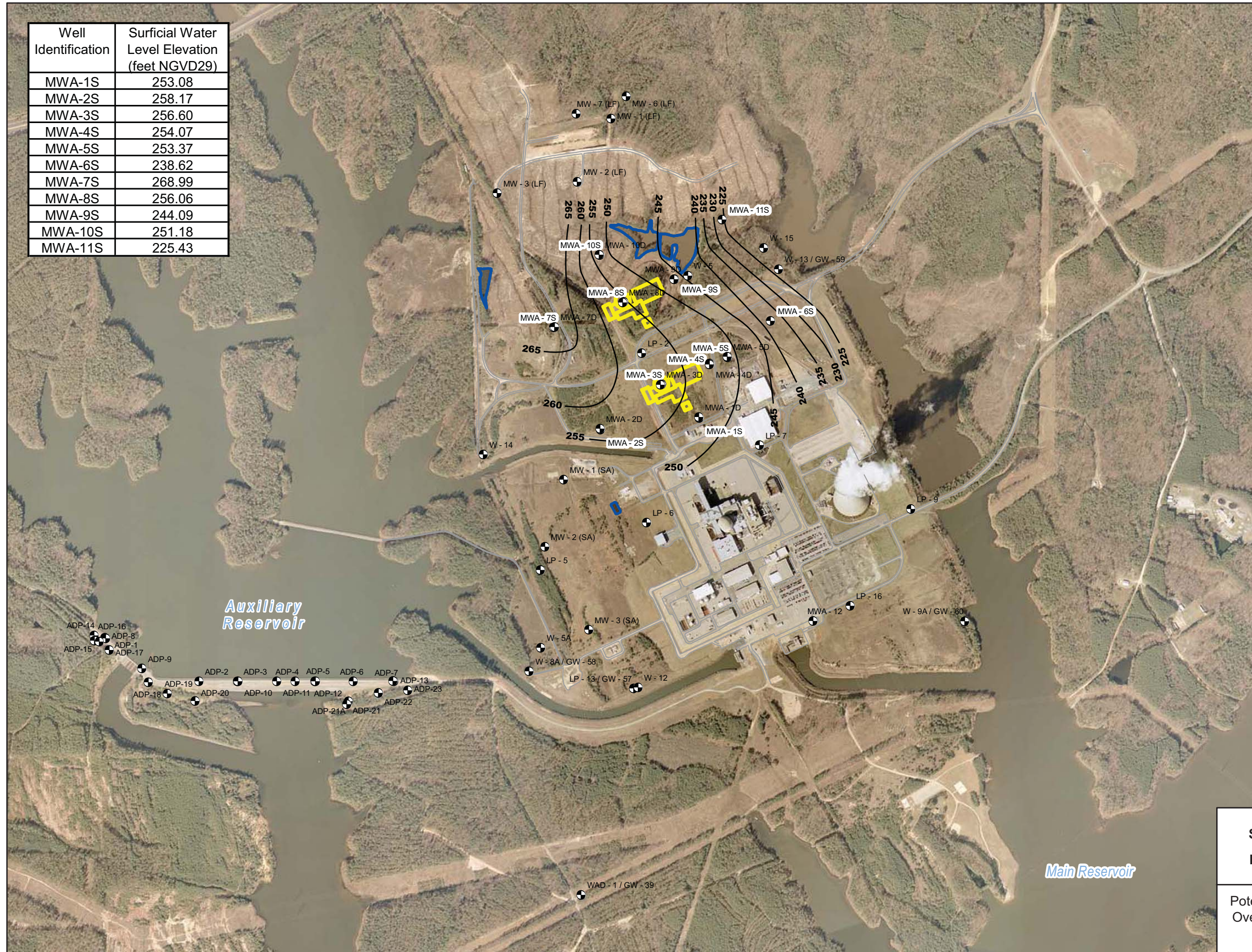


Well Identification	Surficial Water Level Elevation (feet NGVD29)
MWA-1S	253.08
MWA-2S	258.17
MWA-3S	256.60
MWA-4S	254.07
MWA-5S	253.37
MWA-6S	238.62
MWA-7S	268.99
MWA-8S	256.06
MWA-9S	244.09
MWA-10S	251.18
MWA-11S	225.43



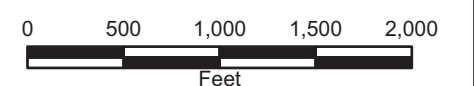
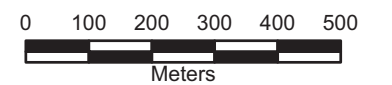
LEGEND

- Plant Site Monitoring Wells and Piezometers
- Proposed Safety-Related Structures
- Ponds
- Equipotential Lines



Note:

- 1) Main Reservoir also known as Harris Reservoir.
- 2) Auxiliary Reservoir normal pool elevation is 252-ft NGVD29.
- 3) Main Reservoir normal pool elevation is 220-ft NGVD29.



Progress Energy Carolinas
**Shearon Harris Nuclear Power Plant
 Units 2 and 3**
Part 2, Final Safety Analysis Report
 New Hill, North Carolina

Potentiometric Surface Map of the Surficial /
 Overburden Aquifer: November 27/28, 2006
 FIGURE 2.4.12-205