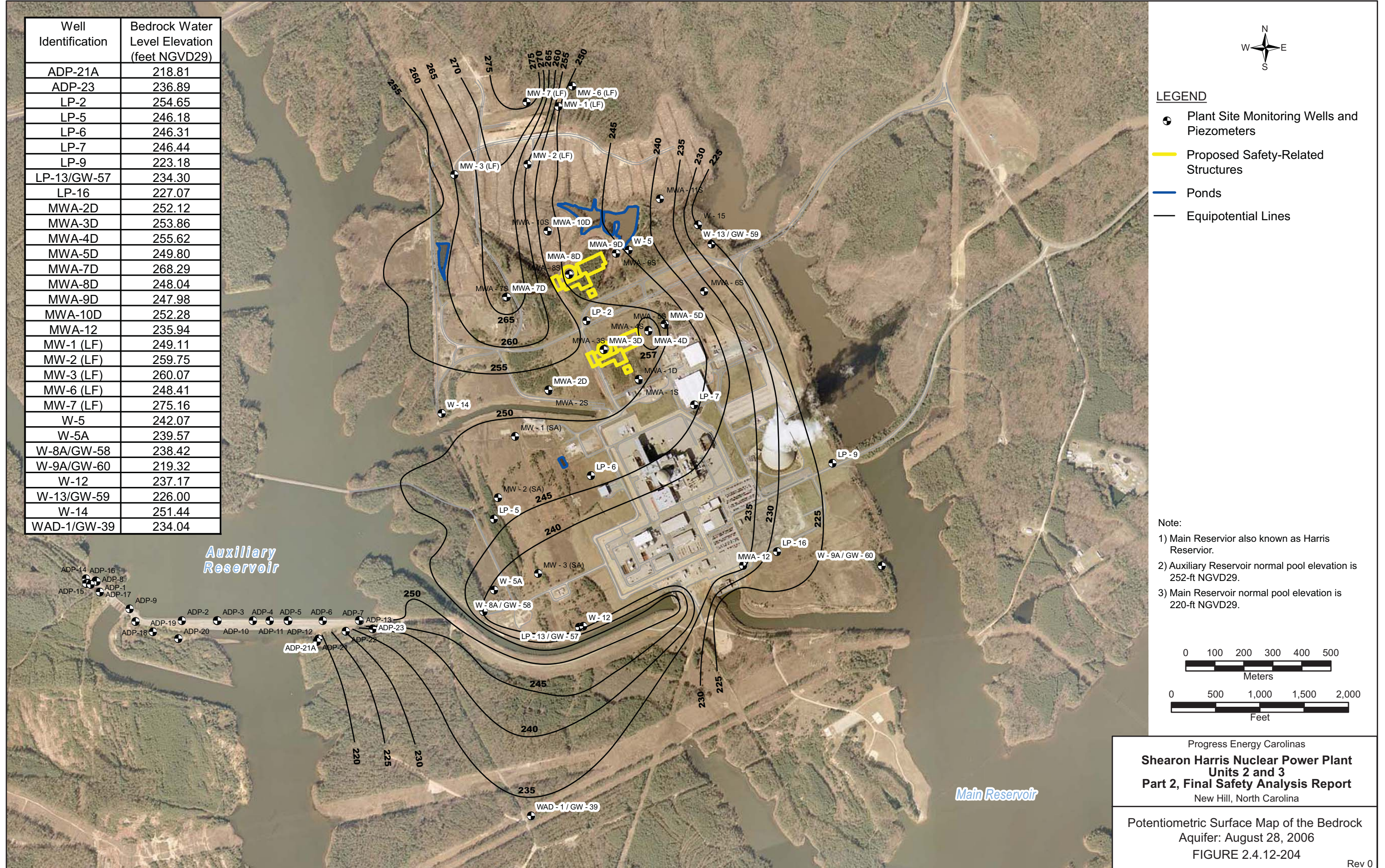


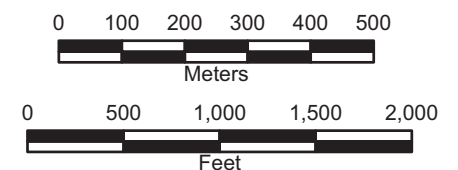
| Well Identification | Bedrock Water Level Elevation (feet NGVD29) |
|---------------------|---|
| ADP-21A | 218.81 |
| ADP-23 | 236.89 |
| LP-2 | 254.65 |
| LP-5 | 246.18 |
| LP-6 | 246.31 |
| LP-7 | 246.44 |
| LP-9 | 223.18 |
| LP-13/GW-57 | 234.30 |
| LP-16 | 227.07 |
| MWA-2D | 252.12 |
| MWA-3D | 253.86 |
| MWA-4D | 255.62 |
| MWA-5D | 249.80 |
| MWA-7D | 268.29 |
| MWA-8D | 248.04 |
| MWA-9D | 247.98 |
| MWA-10D | 252.28 |
| MWA-12 | 235.94 |
| MW-1 (LF) | 249.11 |
| MW-2 (LF) | 259.75 |
| MW-3 (LF) | 260.07 |
| MW-6 (LF) | 248.41 |
| MW-7 (LF) | 275.16 |
| W-5 | 242.07 |
| W-5A | 239.57 |
| W-8A/GW-58 | 238.42 |
| W-9A/GW-60 | 219.32 |
| W-12 | 237.17 |
| W-13/GW-59 | 226.00 |
| W-14 | 251.44 |
| WAD-1/GW-39 | 234.04 |



- LEGEND**
- Plant Site Monitoring Wells and Piezometers
 - Proposed Safety-Related Structures
 - Ponds
 - Equipotential Lines

Note:

- 1) Main Reservoir also known as Harris Reservoir.
- 2) Auxiliary Reservoir normal pool elevation is 252-ft NGVD29.
- 3) Main Reservoir normal pool elevation is 220-ft NGVD29.



Progress Energy Carolinas
**Shearon Harris Nuclear Power Plant
 Units 2 and 3
 Part 2, Final Safety Analysis Report**
 New Hill, North Carolina

Potentiometric Surface Map of the Bedrock
 Aquifer: August 28, 2006
 FIGURE 2.4.12-204

Rev 0