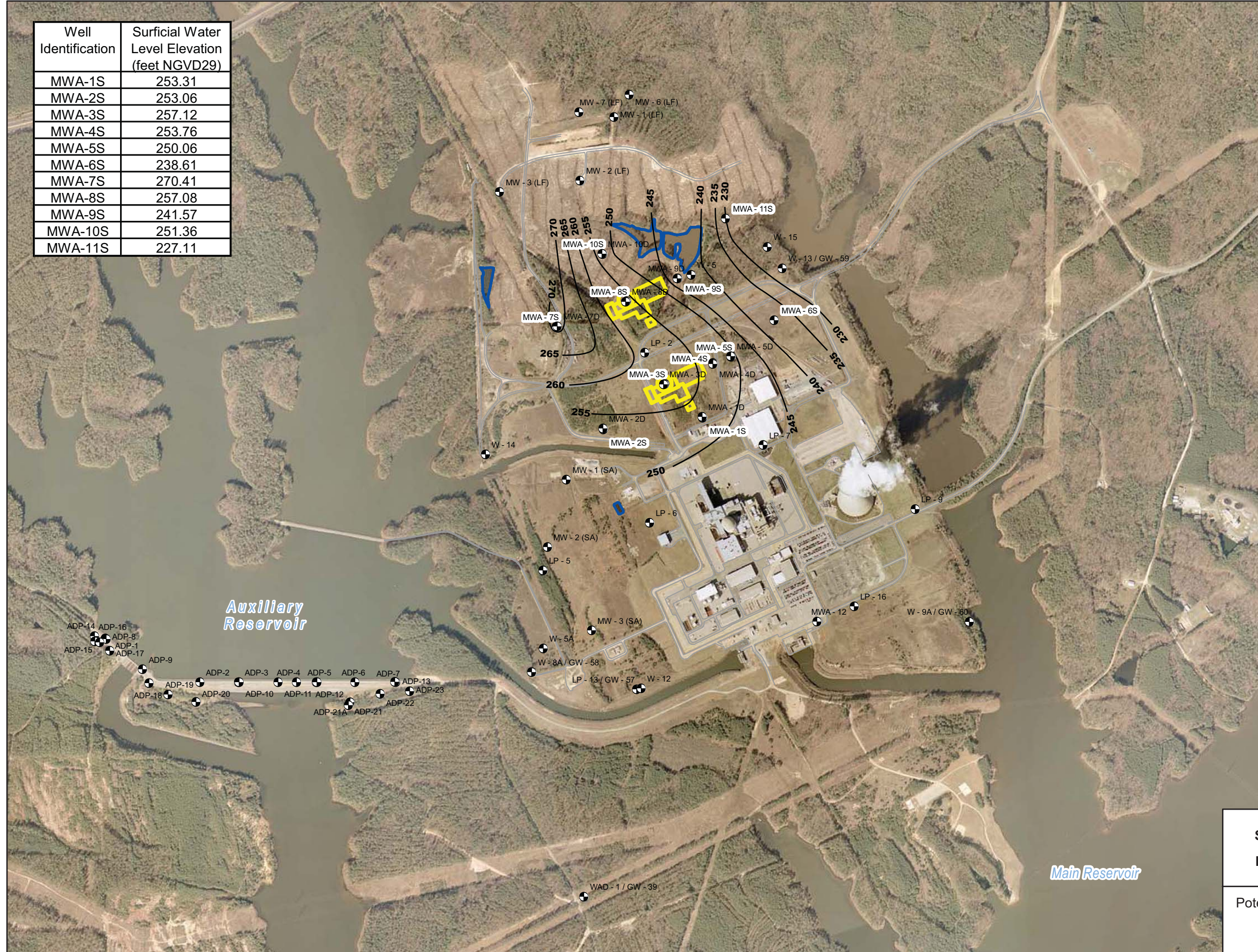


Well Identification	Surficial Water Level Elevation (feet NGVD29)
MWA-1S	253.31
MWA-2S	253.06
MWA-3S	257.12
MWA-4S	253.76
MWA-5S	250.06
MWA-6S	238.61
MWA-7S	270.41
MWA-8S	257.08
MWA-9S	241.57
MWA-10S	251.36
MWA-11S	227.11



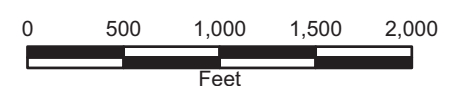
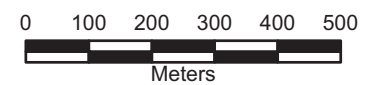
**LEGEND**

- Plant Site Monitoring Wells and Piezometers
- Proposed Safety-Related Structures
- Ponds
- Equipotential Lines



**Note:**

- 1) Main Reservoir also known as Harris Reservoir.
- 2) Auxiliary Reservoir normal pool elevation is 252-ft NGVD29.
- 3) Main Reservoir normal pool elevation is 220-ft NGVD29.



Progress Energy Carolinas  
**Shearon Harris Nuclear Power Plant  
 Units 2 and 3  
 Part 2, Final Safety Analysis Report**  
 New Hill, North Carolina

Potentiometric Surface Map of the Surficial /  
 Overburden Aquifer: August 28, 2006  
**FIGURE 2.4.12-203**