

# **SOUTH TEXAS PROJECT**

## **Units 3 & 4**

**DEPARTMENT OF HOMELAND SECURITY**  
**Site Visit**

January 30, 2008

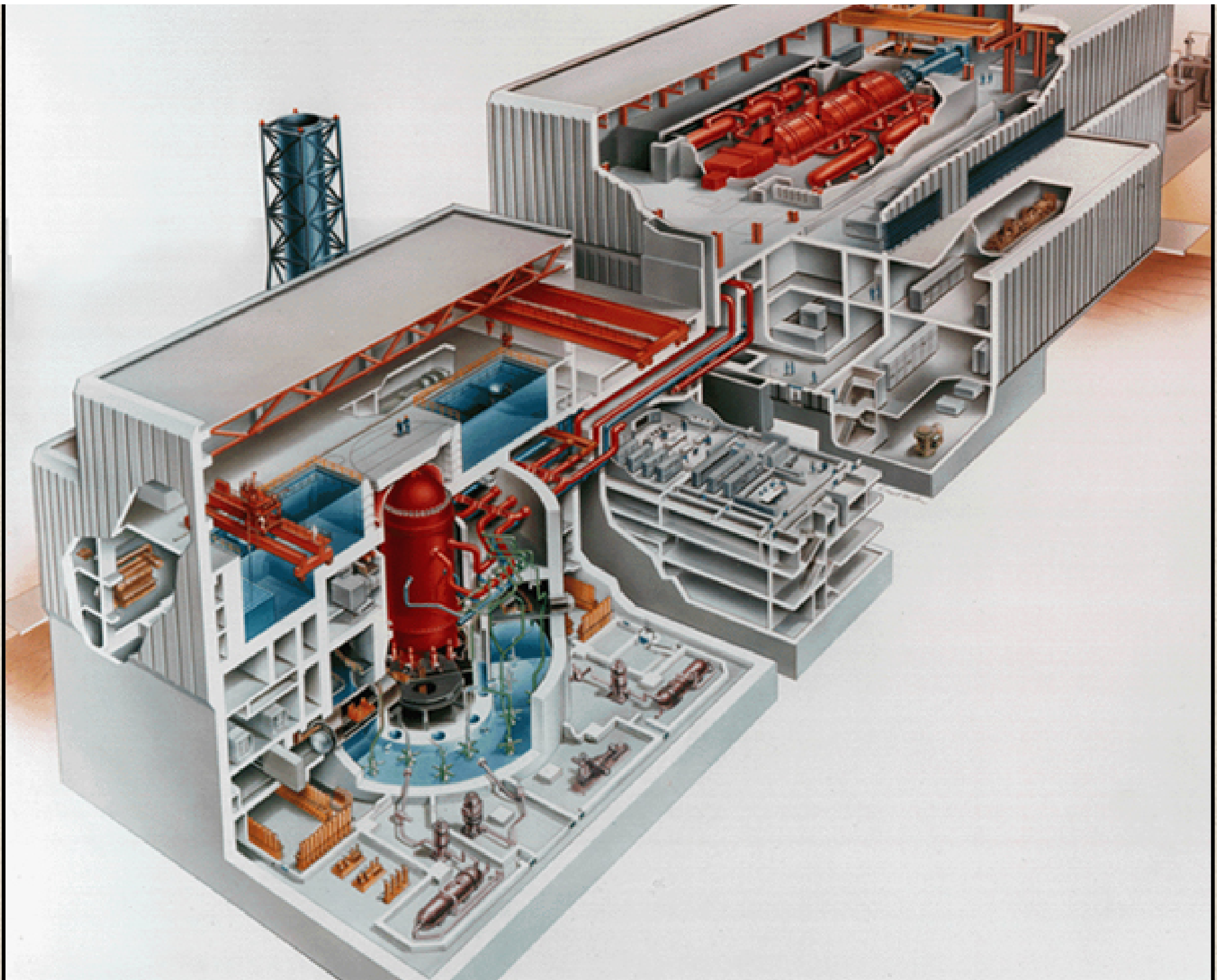




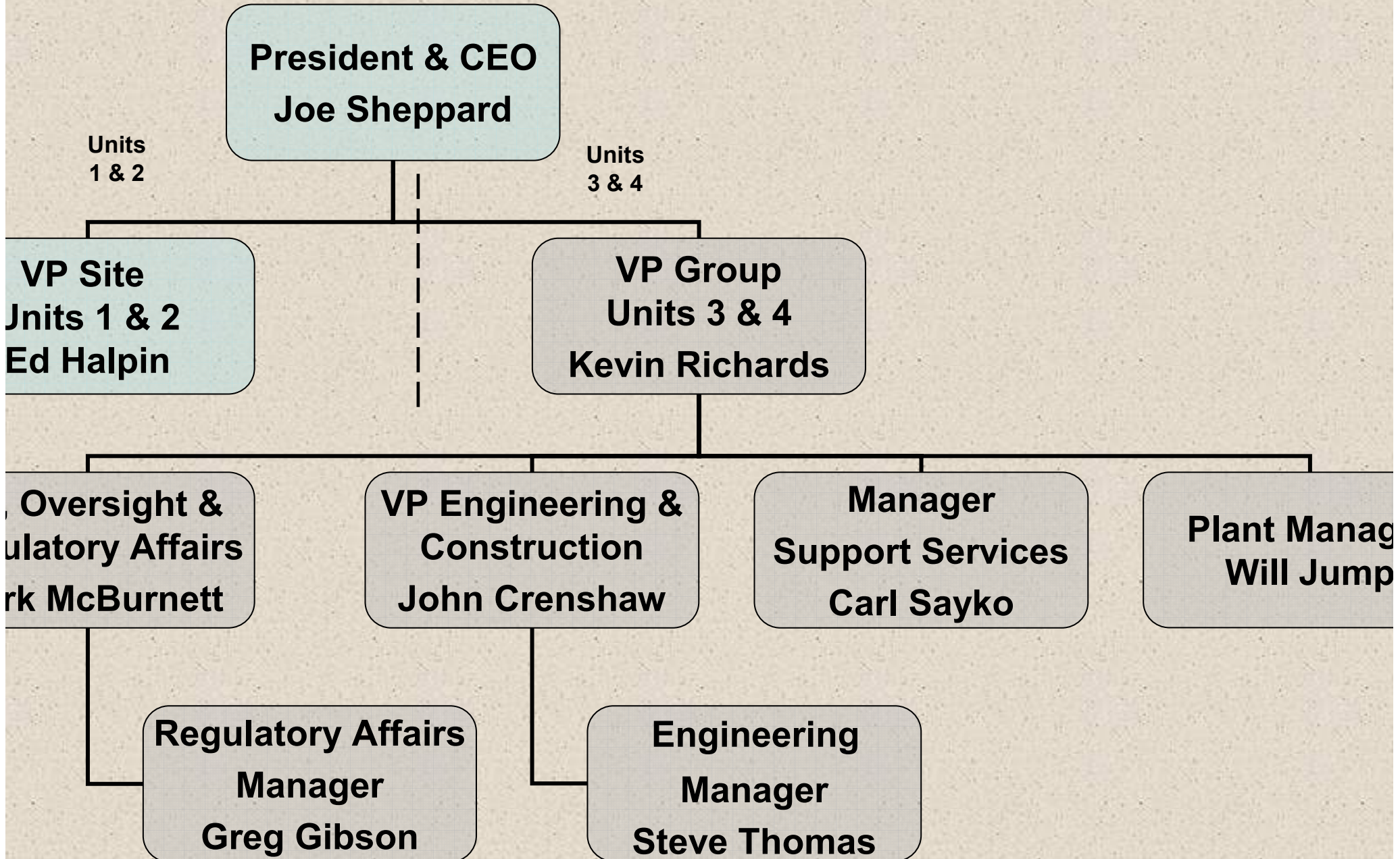
# Site Orientation



Bill Mookhoek



# STP Organization Key Position



# Proven Site

Existing 12,200-acre site

7,000-acre reservoir designed for 4 units

Minimal site preparation work required

Barge and rail access

Transmission  
facilities

Low population  
in EPZ



# Project Schedule

---

COLA Submittal to NRC: September 2007

COLA Acceptance by NRC: December 2007

COLA Revision 1.0: February 2008

NRC RAI Process: Start 2008

COL Issued by NRC: Late 2011

Unit 3 Operation 2015

slowdown and  
spillway to River

Colorado  
River

dam

Main Cooling Reservoir  
7000 Acre Surface Area

Essential Cooling  
Pond

Unit 1 Unit 2

North

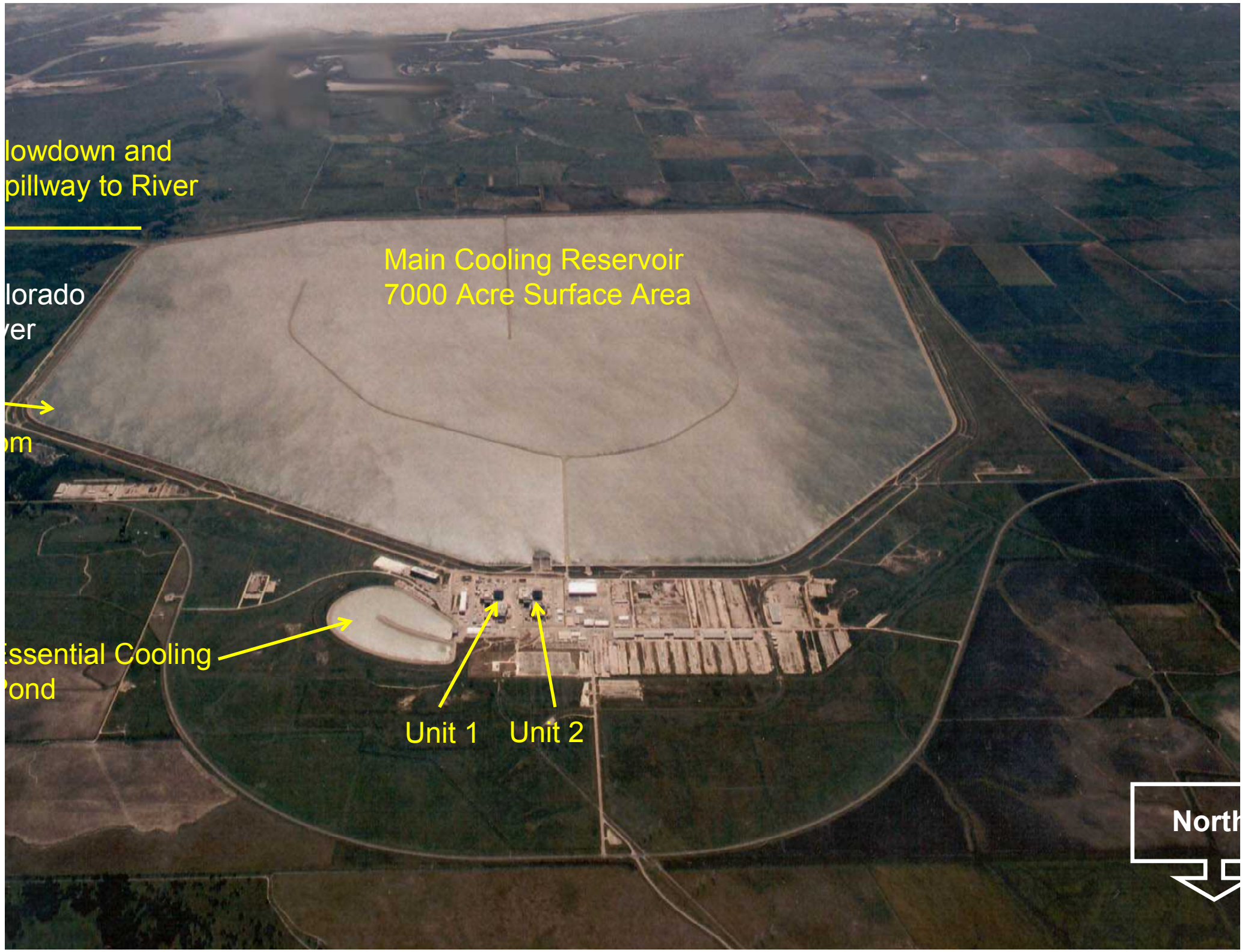




Image Houston-Galveston Area Council

© 2007 Google™

Pointer 28°42'03.31" N 96°03'54.68" W

Streaming ||||| 100%

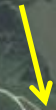
Eye alt 20.08 mi





**Main Cooling Reservoir (MCR)**

**Reservoir Makeup Pumping Facility (RMPF)**



**Blowdown Spillway**



Image Houston-Galveston Area Council

© 2007 Google™

Pointer 28°46'17.94" N 96°02'20.84" W

Streaming 100%

Eye alt 30046 ft



RMPF (Intake)

Barge Slip

Selkirk Island

© 2007 Tele Atlas

© 2007 Google™

Pointer 28°46'27.95" N 95°59'52.52" W

Streaming ||||| 100%

Eye alt 9421 ft

Exotic Isle

Selkirk Island

Spillway

Blowdown  
Diffusion  
Ports



© 2007 Tele Atlas

© 2007 Google™

Pointer 28°44'44.29" N 96°00'18.99" W

Streaming ||||| 100%

Eye alt 9568 ft



Switchyard

Units 3 & 4

© 2006 Europa Technologies

©2006 Google

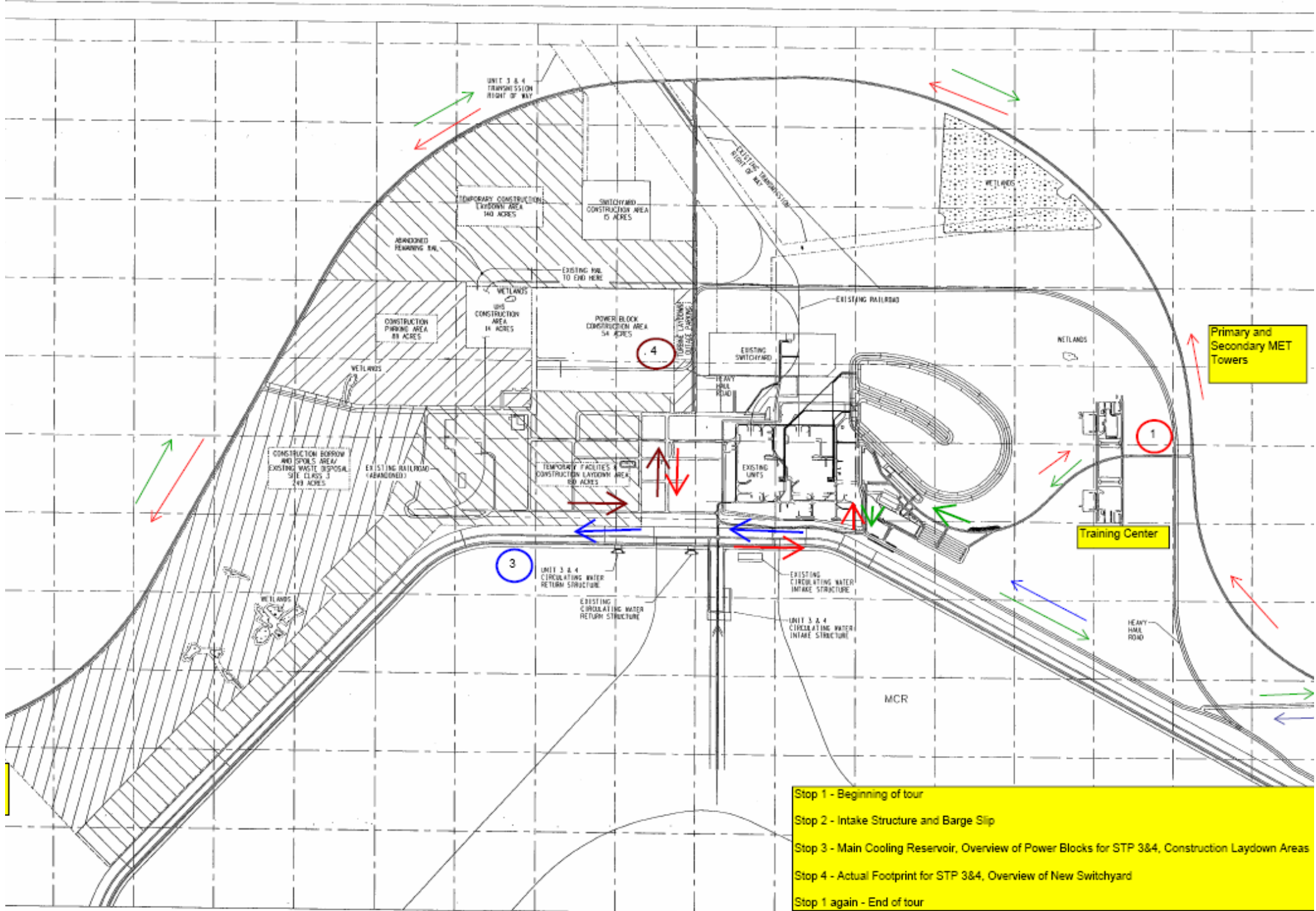


FIGURE 3.9-1 CONSTRUCTION FACILITIES PLAN

Questions  
Comments  
or  
Additions  
???