



OBSTETRICS/GYNECOLOGY

Christiane K. Korba, M.D.
Erika R. O'Donnell, M.D.

GASTROENTEROLOGY

Barbara Dixon-Scott, M.D., Ph.D.

GASTROENTEROLOGY

Leslie E. Tucker, M.D., F.A.C.G., F.A.C.P.
Carl F. Blatt, Jr., M.D.
Chien-Huan Chen, M.D., Ph.D.

CARDIOLOGY

Dilip Banerjee, M.D., F.A.C.C.
John M. Mohart, M.D.

FAMILY MEDICINE

Kelly J. Bain, M.D.
Kim D. Colter, M.D.
Thomas E. Davis, M.D., F.A.A.F.P.
James R. Grimes, M.D.
David P. Guss, M.D.
Craig S. Holzem, M.D., F.A.A.F.P.
Trevor P. King, M.D.
Timothy P. Long, M.D.
Keith M. Ratcliff, M.D., F.A.A.F.P.
James D. Turner, M.D., F.A.A.F.P.
Kristin Weidle, M.D.

GENERAL SURGERY

James D. Cassat, M.D., F.A.C.S.
James D. Jansen, M.D., F.A.C.S.

INTERNAL MEDICINE

Bryce A. Ayers, M.D.
Gary DuMontier, M.D.
Robert W. Halsted, M.D.
Michael E. Rau, M.D., F.A.C.P.
Kenneth B. Smith, M.D., F.A.C.P.
Shaukat A. Thanawalla, M.D.

FAMILY MEDICINE

Mark D. Rickmeyer, D.O.
Craig J. Schmidt, M.D.

NEUROLOGY/SLEEP DISORDERS

Jamie T. Haas, M.D.

URGENT CARE

Thomas M. Farrell, M.D.
Ann Elizabeth Mohart, M.D.

UROLOGY

Sunil M. Apte, M.D.

FAMILY MEDICINE

Matthew J. Tiefenbrunn, M.D.
Peter J. Lamble, M.D.

PLASTIC/RECONSTRUCTIVE SURGERY

Benjamin W. Verdine, M.D.

ORTHOPEDIC SURGERY

Thomas D. Matthews, M.D.
David E. Chalk, M.D.
Dean A. Lusardi, M.D.
James R. Rotramel, M.D.

PEDIATRICS

Elizabeth P. Hammer, M.D.

U. S. Nuclear Regulatory Commission
Region III
Materials Licensing Section
2443 Warrenville Road, Suite 210
Lisle, Illinois 60532-4352

License Number 24-32304-01

Dear Materials Licensing Section:

We are requesting an amendment to our license that will add a second location for the use and storage of radioactive material. The additional location will be at Patients First Health Care, LLC., located at 101 Progress Parkway, Sullivan, Missouri, 63080. The telephone number for this location is (573) 468-3555. Attached is a facility diagram of this location, along with a letter from the building owner giving us permission to use and store radioactive material at this site, and our radiation safety program for the site.

Our use of radioactive material at this site will be the same as described in our current NRC License. Radioactive material will be secured in the locked "Hot Lab Cabinet" (see diagram).

If you have any additional questions, please contact me at (636) 390-1750.

Sincerely,

Signature

Joseph Gubbels

Name

C.E.O.

Title

January 11, 2008

Date

RECEIVED JAN 22 2008

**Radiation Safety Program
Patients First Health Care, LLC
101 Progress Parkway
Sullivan, MO 63081**

Our use of radioactive material at this site will be the same as described in our current NRC License. Senior management of Patients First Health Care, LLC., is aware that they are responsible for the safe use of licensed material at both locations of use. The nuclear medicine technologist on site will be responsible for ensuring that the day-to-day use of licensed material will be used according to NRC regulations and the conditions of our license. Problems or questions pertaining to the use of licensed material will be addressed at the time they are encountered by the technologist and by our radiation safety officer, Brenda Overschmidt, or in her absence one of our authorized users.

These individuals can be reached at all time by way of telephone, cell phone, or facsimile. If the situation warrants, one of the above individuals will immediately travel to the location to assist with any radiation safety emergencies. The Sullivan office is approximately 30 miles from our Washington office.

In order to provide additional oversight of the licensed use program at this additional locations of use, the R.S.O. will visit each office periodically. These visits will be used to review the radiation safety program to ensure that it is operating in accordance with our NRC license, and pertinent NRC regulations that apply to the medical use of radioactive material. Brenda Overschmidt has been granted, by senior management, the time and authority necessary to meet these responsibilities. Any area where corrective action is necessary, based on the RSO's review of the program will be implemented.

The 101 Progress Parkway, office will be provided with all necessary radiation safety equipment such as, calibrated survey instrument, instrument to evaluate wipe smears for removable contamination sensitive enough to detect 2,000 dpm/100cm², dose calibrator, syringe shields, counter top L-shield, shielded decay-in-storage containers and other shielded containers, , and other items necessary for compliance with NRC regulations and the conditions of our license. Shielding will be provided to maintain radiation exposure in unrestricted areas below the limits stated in 10 CFR Part 20.1301(a).

We are requesting the same radioactive material, chemical and/or physical form, and possession levels as listed on our current materials license for the Sullivan, Missouri office.

Licensed material for medical use will be obtained from a licensed manufacturer or licensed nuclear pharmacy and secured in the locked hot lab cabinet at the time of delivery.

Senior management of Patients First Health Care, LLC., has reviewed this proposed oversight of the use and control of licensed material and can ensure the safe use of licensed material at both of our locations. Both locations of use will be included in managements annual review of the ALARA and Radiation Safety Program.



101 PROGRESS PARKWAY • SULLIVAN, MISSOURI 63080 • (573) 468-3555
FAX: (573)468-3554 • WWW.PATIENTSFIRSTHC.COM

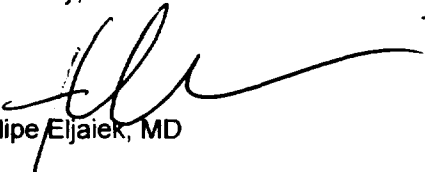
November 20, 2007

Joseph Gubbels, CEO
Patients First Health Care, LLC
Administration
901 Patients First Drive
Washington, Missouri 63090

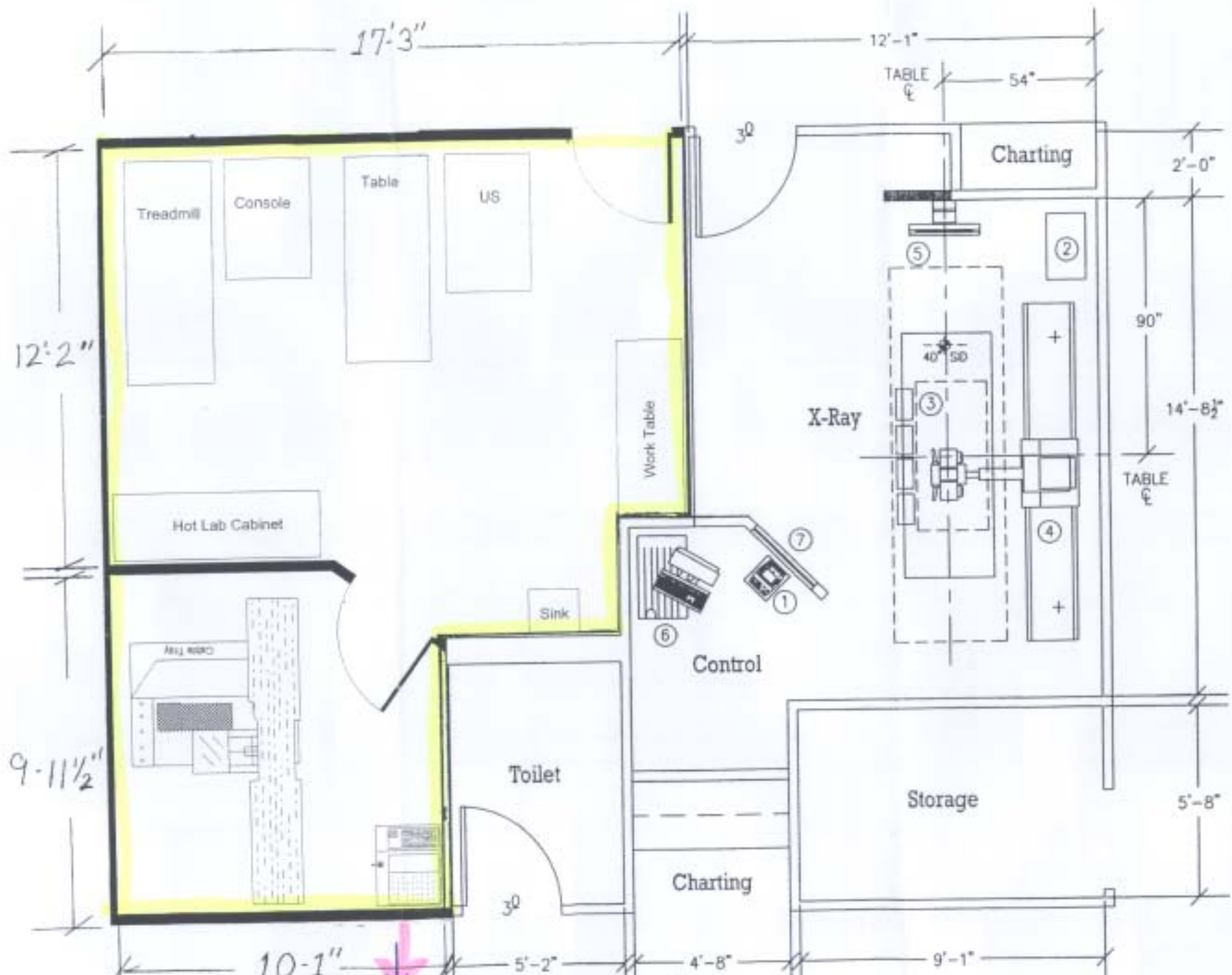
Dear Mr. Gubbels:

I understand that Patients First Health Care, LLC is preparing for application of Radioactive Material licensure for the intent of diagnostic medical testing at 101 Progress Parkway, Sullivan, Missouri. As owner of the facility at this address, I have no objections to the proposed use and storage of radioactive material at this location.

Sincerely,



Felipe Eljaiek, MD

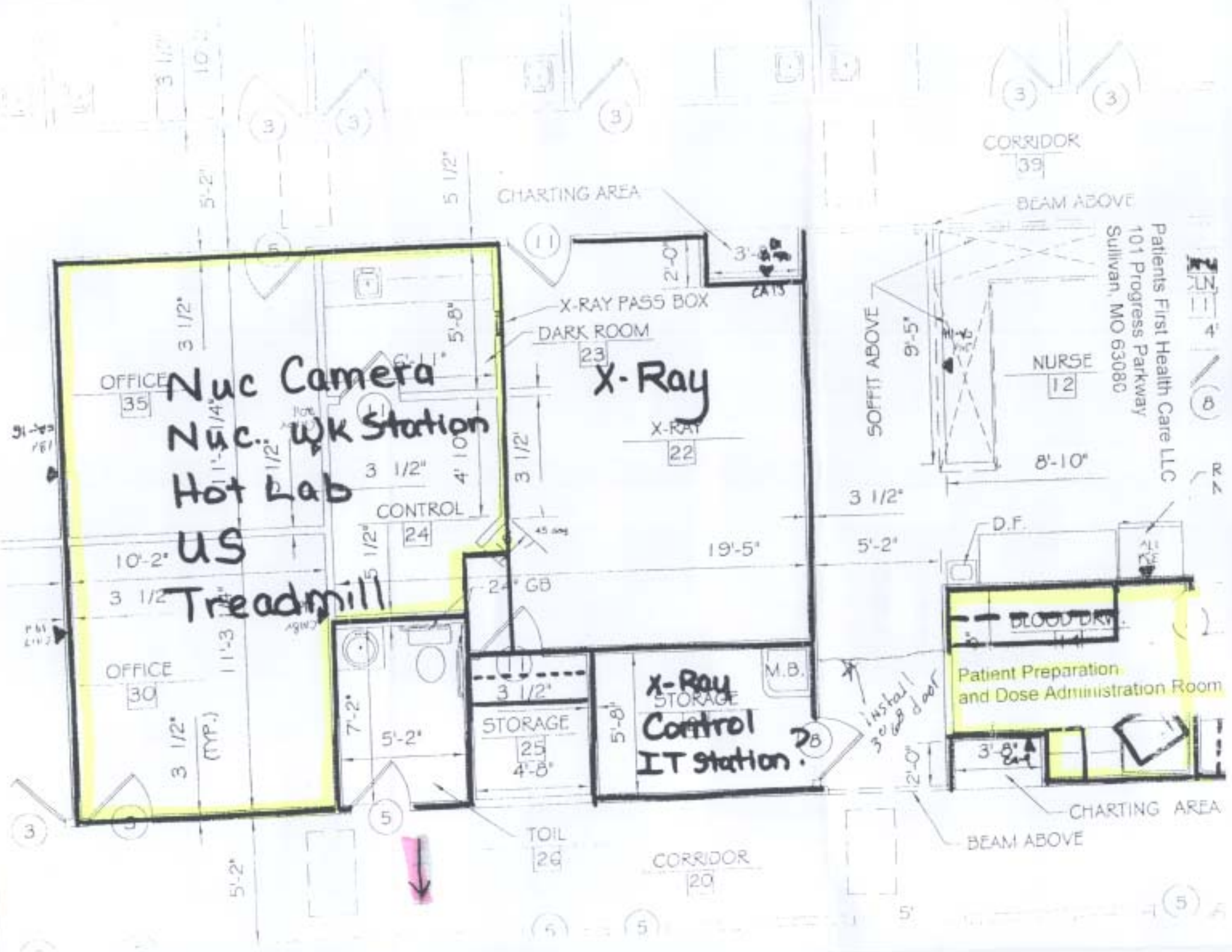


Patients First Health Care LLC
 101 Progress Parkway
 Sullivan, MO 63080

Room modifications for Nuclear Medicine
 One story building
 Roof above restricted area
 Basement below restricted area (Medical Records)

1/4" = 1'

Patients First Health Care LLC
101 Progress Parkway
Sullivan, MO 63080



Nuc Camera
Nuc. Wk Station
Hot Lab
US
Treadmill

X-Ray

X-Ray Storage
Control
IT station?

BLOOD DRAW
Patient Preparation and Dose Administration Room

CHARTING AREA

CORRIDOR
39

BEAM ABOVE

SOFFIT ABOVE

NURSE
12

D.F.

TOIL
26

CORRIDOR
20

CHARTING AREA


BEAM ABOVE





901 PATIENTS FIRST DRIVE
WASHINGTON, MISSOURI 63090



UNITED STATES POSTAGE

FIRST CLASS
02 1A \$ 00.58⁰
0004339787 JAN 16 2008
MAILED FROM ZIP CODE 63090

*U.S. Nuclear Regulatory Commission
Region III
Materials Licensing Section
2443 Warrenville Road, Suite 210
Lisle, Illinois 60532-4352*

605324352 0021

