

WATTS BAR NUCLEAR PLANT

TECHNICAL INSTRUCTION

TI-50A

ASME SECTION XI

PRESERVICE INSPECTION PROGRAM

UNIT 1

CURRENT REVISION LEVEL 16

Prepared By Jeff Goulart

Revised By Jeff Goulart

Submitted By Henry Belus
ISI Programs Supervisor

FQE Review Howard Pop

PORC Review Date 2/30/85

Approved By MSM
Superintendent

Date Approved 2/30/85

Last page of this instruction: 454

- 1C Document Control Unit, 1520 CST2C
- NRC
- 1C Nuclear Safety Review Staff
- 1C Plant Master File
- Plant Superintendent
- Asst. Plant Supt. (Operations)
- Asst. Plant Supt. (Maintenance)
- Adm. Svs. Supervisor
- 1C Asst. Mechanical Maint. Sup.
- Chemical Laboratory
- Chemical Unit Supervisor
- 1C Chief, Nuclear Training Branch
- Compliance Unit
- DPSO-WBN
- Document Control Supervisor
- Electrical Maint. Supervisor
- Electrical Shop
- 1C Engineering Supervisor
- 1C Field Services Supervisor
- 1C Health Physicist
- Health Physics Laboratory
- Instrument Engineer
- 1C Instrument Maint. Supervisor
- Instrument Shop
- Janitor & Labor Supervisor
- Management Svs. Supervisor
- 1C Mechanical Maint. Supervisor
- 1C Mechanical Unit Supervisor
- 1C Operations Supervisor
- OPQA - Plant Coordinator
- Plant Services Supervisor
- Plant Training Officer
- 1U Plant Training Shift Engineer
- Power Stores Unit Supervisor
- Preop Test Supervisor
- Public Safety
- QA Manager, QA and Audit Staff
- 2C Field Quality Engineering Supervisor
- Reactor Unit Supervisor
- Safety Engineer
- 1C Shift Engineer's Office
- Stationary Equipment Group
- Technical Support Center
- 1C Unit 1 Control Room
- Unit 2 Control Room
- 1U Regulatory Engineer
- 1C Inservice Inspection Group-C
- 2C ISI Programs Section-C
- 1C NDE Engineering Section-C
- 1C NDE Engineering Section-WBNP
- 1C NDE Inspection Section-C
- 1C NDE Inspection Section-WBNP
- 1C DCU-B-WBNP-CONST
- 1C ANI
- 1C **NEB**

HISTORY OF REVISION/REVIEW

<u>REV. NO.</u>	<u>DATE</u>	<u>REVISED PAGES</u>	<u>REASON FOR CURRENT REVISION (INCLUDE ALL TEMPORARY CHANGE NUMBERS)</u>
0	07/14/81	All	
1	09/29/81	Page 55	
2	10/13/81	Page 103	
3	10/17/81	Pages 69,70,75, 76,89-97,105-109 Added pages 69a, 76a,97a,97b,97c, 109a,109b,109c, 109d, & 109e	
4	11/10/81	Added page 92a	
5	01/15/82	Table of Contents 34a, 35	
6	01/20/82	Punchlist	
7	04/28/82	All	
8	01/11/83	Cover sheet; Table of Contents; Punch- list; Pages 2-4, 17, 18, 20-22, 38-46, 48, 49 100; Added pages 20a-20d, 22a, 22b, 45a, 45b, 49a, 51a, 109L-109Q, 137-151	Add Appendix E - Minor corrections and clarifications
9	03/22/83	Pg. 1	Change WB7.3.8 to AI-9.7
10	07/25/83	Table of Contents; Pages 2-4, 7, 15, 20b, 20c, 22a, 22b, 25, 31-40, 47, 49a, 51, 51a, 73-76, 89a, 90, 91, 104, 150; Added pages 31a, 46a, 79a, 79b, 109J1, 109J2, 109R, 109S; Deleted pages 26-30, 36	- Minor corrections, added and revised weld location drawings, revised section on repairs and replacement, and revised organizations titles.
11	09/21/83	Pages 33,34,50,51a, added pages 51b, 109T-109BBBB	Incorporated temporary change number 83118, revised section on Notification of Indication, and added hanger location drawings.

HISTORY OF REVISION/REVIEW

<u>REV. NO.</u>	<u>DATE</u>	<u>REVISED PAGES</u>	<u>REASON FOR CURRENT REVISION (INCLUDE ALL TEMPORARY CHANGE NUMBERS)</u>
12		All	General revision to update program, added support drawings, tables, incorporated temporary changes <u>83-137</u> , <u>83-149</u> , and <u>84-46</u> , removed calibration block drawings, removed reciprocation charging pump drawings and renumbered all pages.
13		Punchlist, Table of Contents, 2-4, 7, 9, 13-19, 21-36, 38, 42-47, 50, 53, 63-65, 87, 93-106, 113, 120-123, 128, 137, 146, 149, 154, 162-164, 170, 171, 178, 181, 185, 188, 189, 191, 264, 270, 276, 288, 292, 315, 316, 320, 325, 327, 334-342, 405, 413-418, 426, 430-432 Added 4a, .15a, 15b, 35a, 82a, 312a, 417a, 417b, 417c, 432a, 432b, 432c, 432d, 433-454	Revised Request for Relief to incorporate NRC comments, added construction examinations of socket welds, incorporated temporary change TC-84-179, minor corrections and clarification, added reciprocation charging pump, added national board numbers.
14		Punchlist, 2, 3, 4, 11, 15a, 19, 22, 23, 29, 30, 32, 34-38, 41, 47, 63, 64, 73-75, 85, 100, 106, 121, 122, 124, 125, 126, 178, 187, 281-342, 401-408, 416, 417, 417a, 417b, 417c, 429, 435-437, 440, 442-445, 454, Added 38a, 312a, 312b, 429a, 429b	Added acceptance ranges for snubber and spring supports, made minor corrections and clarifications, added detail of safe end on steam generator drawing, revised Request for Relief ISI-10.

HISTORY OF REVISION/REVIEW

<u>REV. NO.</u>	<u>DATE</u>	<u>REVISED PAGES</u>	<u>REASON FOR CURRENT REVISION (INCLUDE ALL TEMPORARY CHANGE NUMBERS)</u>
15	2/1/85	Cover Sheet, History of Revision/Review, Table of Contents, 2, 3, 4, 6, 15, 15B, 22, 25, 38, 45, 50, 88, 89, 92, 95-106, 111, 112, 124, 165, 180, 181, 189, 304, 308, 309, 311, 328, 330, 333, 416, 417C, 418, 434-446, 448-452 ADDED History of Revision/Review Page DELETED Punchlist Page	Minor corrections and clarifications, added penetration welds to drawings, added penetration welds to Request for Relief ISI-4, revised some of the National Board Numbers, and deleted punchlist page.
16	3/30/85	Table of Contents 1 of 2, 12, 15b, 16, 42, 64, 126, 282-295, 298, 303-305, 307-309, 311, 312, 312b, 313-322, 324-326, 328, 330-332, 337-339, 341, 403, 417	Revised some support acceptance ranges in Appendix A, also revised section 6.4 because weld RCF-B4-4 was added to request for relief ISI-4, and corrected page numbers in Table of Contents.

TABLE OF CONTENTS

	<u>Page No.</u>
1.0 STATEMENT OF APPLICABILITY	1
2.0 PURPOSE	1
3.0 CODES OF RECORD AND CODE CASES	1
4.0 METHOD OF IMPLEMENTATION AND RESPONSIBILITIES	2
5.0 ABBREVIATIONS AND DEFINITIONS	4a
6.0 COMPONENTS SUBJECT TO EXAMINATION - ASME CLASS 1	5
7.0 COMPONENTS SUBJECT TO EXAMINATION - ASME CLASS 2	19
8.0 COMPONENTS SUBJECT TO EXAMINATION - ASME CLASS 3	30
9.0 HYDROSTATIC PRESSURE TESTS	30
10.0 AUTHORIZED INSPECTOR	30
11.0 EXAMINATION METHODS	31
12.0 QUALIFICATIONS OF NONDESTRUCTIVE EXAMINATION PERSONNEL	32
13.0 ACCEPTANCE CRITERIA	32
14.0 REPAIRS AND REPLACEMENTS	32
15.0 RECORDS AND REPORTS	33
16.0 NOTIFICATION OF INDICATION	36
17.0 CALIBRATION BLOCKS	37
18.0 REQUESTS FOR RELIEF	37
19.0 AUGMENTED INSPECTIONS	38
20.0 REFERENCES	38
APPENDIX A - Table A	39
APPENDIX A - Table B	44

6.3.5 Steam Generator Primary Pressure-Retaining Bolting
2 Inches and Smaller in Diameter

The bolting on the manway covers (2) on the primary side of all the generators shall be visually examined. The bolting may be examined either in place under tension or when the bolting is removed.

Each manway has 16 bolts at 1.88 inches in diameter. The bolts are fabricated to SA-193, Gr. B7.

6.3.6 Steam Generator Integrally-Welded Vessel Supports

There are no integrally-welded vessel supports. The four main support pads are secured to the steam generator field support system by high strength bolts.

6.3.7 Steam Generator Vessel Cladding

A clad patch (36 square inches) is in the steam generator interior cladding near each generator manway. In accordance with the 1977 Edition, 1978 Summer Addenda of Section XI, no examination is required.

The hemispherical chamber is clad with austenitic stainless steel.

6.3.8 Steam Generator Tubing

Each steam generator tube bundle consists of 4,674 NiCrFe alloy (Inconel SB-163) U-tubes of 0.750 O.D. by 0.042 average wall thickness.

All tubes shall undergo a preservice inspection by eddy current examination. The preservice examination shall be performed in accordance with Appendix IV of the 1974 Edition, Summer 1976 Addenda of Section XI and Regulatory Guide 1.83, Rev. 1. (See Section 19.0)

6.3.8.1 Acceptance Criteria

6.3.8.1.1 As Used In This Section:

6.3.8.1.1.1 Imperfection means an exception to the dimensions, finish or contour of a tube from that required by fabrication drawings or specifications.

1-062B-T217-6
-22

1-062B-T198-1
-2
-3
-4
-5
-6
-7
-7A
-7B
-8
-9
-10
-11
-12
-13
-14

1-062B-T225-2
-3
-4
-5
-6A
-6B
-7
-7A
-7B
-8
-9
-11

1-063B-T108-1
-2
-3
-4
-5
-6
-7
-8
-9

1-063B-T048-2
-3
-4
-5
-6
-7
-8
-9
-10

1-063B-T044-12

1-063B-T105-1
-2
-3
-4
-5
-6
-6A
-6B
-7
-8
-9
-10
-10A
-10B
-11
-12
-12A
-12B
-16
-17

1-063B-T112-1
-2
-6
-7
-9
-11
-13

1-063B-T063-2A

1-063B-T063-3
-4
-5
-6
-7
-8
-9

1-063B-T026-12
-15
-16

1-063B-T034-1
-2
-3
-4
-5
-6
-7
-8

1-063B-T034-9

1-063B-T113-11
-12
-15
-16
-19
-23
-26
-30
-32

1-063B-T060-2

1-063B-T061-11
-17

1-063B-T058-19A
-19B
-19C
-19D
-19E
-19F
-19G
-19H

6.4.4 Piping Integrally-Welded Supports

All piping integrally-welded external support attachments whose support base material design thickness is 5/8 inch and greater shall be surface examined. Integrally-welded external support attachments include those supports which have attachment welds to the piping pressure-retaining boundary. (See Appendix A, Table G)

6.4.5 Piping Support Components

All piping support components shall be visually examined. This examination includes integrally-welded and nonintegrally-welded support components. The support settings of constant and variable spring type hangers, snubbers, and shock absorbers shall also be verified. (See Appendix A, Table G)

6.4.6 Piping Pressure-Retaining Bolting Larger Than 2 Inches in Diameter

There is no Class 1 piping pressure-retaining bolting larger than 2 inches in diameter.

6.4.7 Piping Pressure-Retaining Bolting 2 Inches and Smaller in Diameter

Class 1 bolting 2 inches and smaller in diameter shall be visually examined. These examinations shall include bolts, studs, and nuts. (See Weld Map Isometrics in Appendix A for location of bolted connections).

The bolting may be examined either in place under tension, when the connection is disassembled, or when the bolting is removed.

6.4.8 Piping Safe-End Welds

There are no piping safe-end welds other than those discussed in Sections 6.1.4, 6.2.4, and 6.3.3.

6.5 Reactor Coolant Pumps (4)-RCP

6.5.1 RCP Pressure-Retaining Bolting Larger Than 2 Inches in Diameter

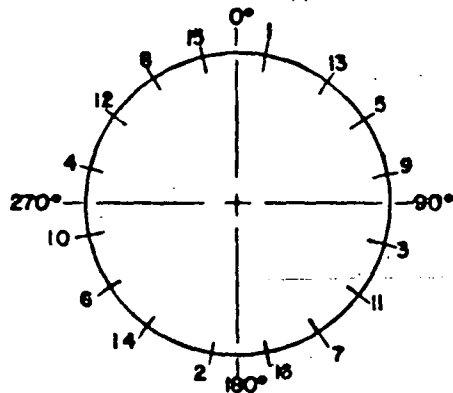
The main flange on each pump includes 24 bolts at 4-1/2 inches in diameter. The bolts shall be ultrasonically examined and shall be surface examined if removed. Threads in the base material and flange ligaments between threaded stud holes shall be visually examined if the connection is disassembled.

TABLE A
WATTS BAR PRESERVICE INSPECTION PROGRAM - ASME CLASS 1 COMPONENTS

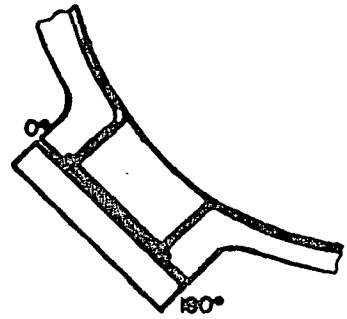
WBNP
 TI-50A
 Appendix A
 Page 4 of 36
 Revision 16

<u>Component</u>	<u>Program Reference Section (See Note 1)</u>	<u>Examination Category Item No. From Table IWB-2600, Section XI</u>	<u>From Table IWB-2600, Section XI</u>	<u>Method of Inspection</u>	<u>Reference Drawing No.</u>
D. <u>Piping (Continued)</u>					
4. Branch Pipe Connection Welds 6" Diameter and Smaller	6.4.2	B4.7	B-J	PT	Appendix A, Piping Weld Location Dwg
5. Socket Welds	6.4.3	B4.8	B-J	PT	Appendix A, Piping Weld Location Dwgs
6. Integrally-Welded Supports	6.4.4	B10.10 (See Note 2)	B-K-1 (See Note 2)	PT	Appendix A, Table G
7. Support Components	6.4.5	B11.10 (See Note 2)	B-K-2 (See Note 2)	VT-3 VT-4	Appendix A, Hanger Location Dwgs
8. Pressure-Retaining Bolting Two Inches and Smaller in Diameter	6.4.7	B7.50 (See Note 2)	B-G-2 (See Note 2)	VT	Appendix A, Piping Weld Location Dwg
E. <u>Reactor Coolant Pumps</u>					
1. Pressure-Retaining Bolting Larger Than Two Inches in Diameter	6.5.1	B6.180, B6.190 (See Note 2)	B-G-1 (See Note 2)	UT, VT-1, PT or MT	CH-M-2672-B
2. Pressure-Retaining Bolting Two Inches and Smaller in Diameter	6.5.2	B7.60 (See Note 2)	B-G-2 (See Note 2)	VT-1	CH-M-2672-B

NOTES: 1. See Section 6.0 for additional information.
 2. Item number and examination category from 1977 Edition, 1978 Summer Addenda of Section XI.

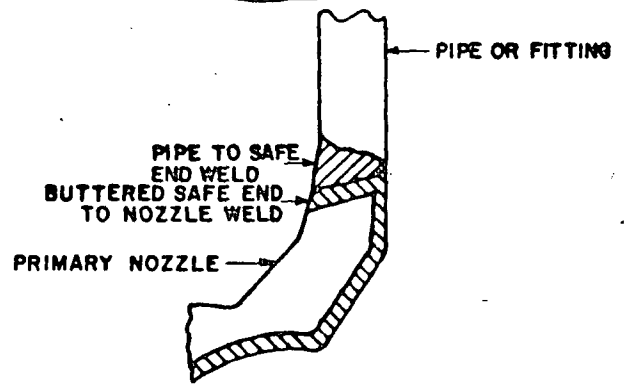


PRIMARY MANWAY BOLTING
SEE NOTE 1



NOTES

1. PROCEED THE BOLT NUMBER WITH 90X-Y WHERE X=STEAM GENERATOR NUMBER & Y=C FOR COLD LEG MANWAY OR H FOR HOT LEG MANWAY.



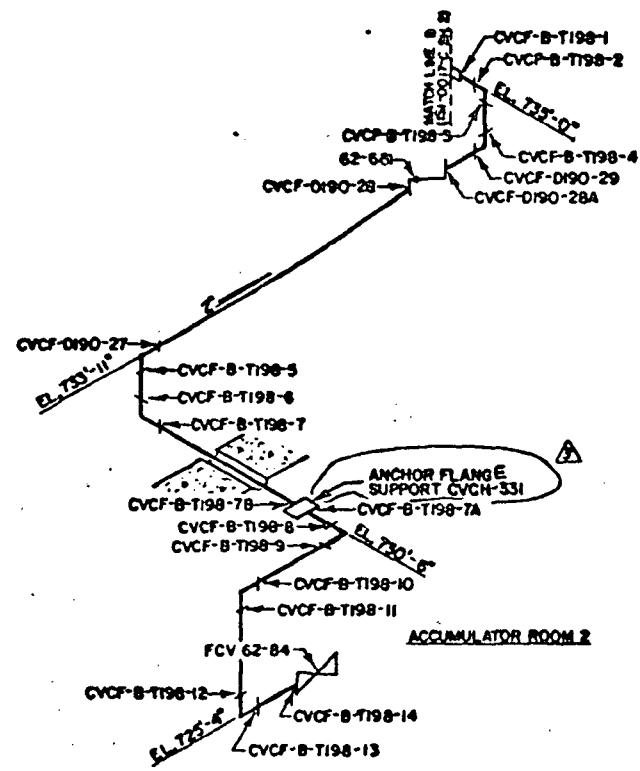
DETAIL A

MBNP
TI-50A
Page 26 of 362
Revision 16

3	3-6-85	ADD NOTES AND REFERENCES TO THE NOTES REV	✓	✓
2	8-6-84	ADD DETAIL A	✓	✓
1	7-13-84	CORRECT BOLT NUMBER SEQUENCE AND DELETED NOTE	✓	✓
NO DATE		REVISIONS	CKD	APP
TENNESSEE VALLEY AUTHORITY DIVISION OF NUCLEAR POWER				
WATTS BAR NUCLEAR PLANT UNITS #1 & #2 STEAM GENERATOR				
DATE	DESIGNED	APPROVED	DATE	BY
7-13-84	REV	✓	7-13-84	CKD
				CH-M-2660-B R 3

REFERENCE DRAWINGS

SK. 406-9 SH. 16
 MATERIAL SPECIFICATIONS
 CLASS I
 PIPE
 SA 376 TP 304
 2" SCH 160
 FITTINGS
 SA 182 F 304
 2" BORED SCH 160
 FLANGES
 SA 182 F 304
 2" BORED SCH 160



WBNP
 TI-50A
 Appendix A
 Page 88 of 362
 Revision 16

NO.	DATE	REVISIONS	CK'D/APP
3	12-05	CORRECT SUPPORT NUMBER AND	JLB
2	10-22-84	DELETED BOLTER CONNECTION NUMBER CVCFC-1 SEE	JLB
1	1-20-84	ADD BOLTER DESIGNATION AND CHANGED CLASS DESIGNATIONS AND	JLB

TENNESSEE VALLEY AUTHORITY
 DIVISION OF NUCLEAR POWER
WATTS BAR NUCLEAR PLANT
 UNIT #1
CHEMICAL AND VOLUME CONTROL SYSTEM
 WELD LOCATIONS

JLB
 12-05-84
 154-0005-C

TABLE G (CONTINUED)

COMPONENTS SUBJECT TO EXAMINATION CATEGORY

ASME CLASS 1 SUPPORTS

WBNP
 TI-50A
 Appendix A
 Page 244 of 362
 Revision 16

System		Dwg. No.	Table								
RC		ISI-0010-C	IWB								
Support No.	Sheet No.	Support Type					Integrally-Welded Attachment Size	Exam Required	Bolting	Acceptance Range	
		Pipe Size	Restraint	Snubber	Spring	Anchor					Stroke
RCH-433	1	6		PSA-10 (2)			6"	No	VT-3,4	Yes	9/16" - 5 3/4"
RCH-11	2	6				BP-22A1 (2)	4"	No	VT-3,4	Yes	3 1/16" - 3 3/4"
RCH-12	2	6		PSA-3			5"	No	VT-3,4	Yes	5/8" - 4 3/4"
RCH-14	2	6	X					No	VT-3	Yes	
RCH-15	2	6	X					No	VT-3	Yes	
RCH-18	2	6		PSA-1/4			4"	No	VT-3,4	Yes	1" - 1 3/4"
RCH-20	2	4		PSA-3			5"	No	VT-3,4	Yes	9/16" - 4 9/16"
RCH-21	2	4		PSA-1 (2)			4"	No	VT-3,4	Yes	1/4" - 3 3/8"
RCH-22	2	4		PSA-1			4"	No	VT-3,4	Yes	1/4" - 2 5/8"
RCH-25	2	4				BP-VS2F-10	2 3/8	No	VT-3,4	Yes	5/8" - 2 1/8"
RCH-26	2	4	X					No	VT-3	Yes	
RCH-27	2	4		PSA-3			5"	No	VT-3,4	Yes	1/4" - 4 3/16"
RCH-28	2	4				BP-VS4A-8	4 3/4	No	VT-3,4	Yes	1" - 4 1/2"
RCH-29	2	4	X					No	VT-3	Yes	
RCH-30	2	4		PSA-3			5"	No	VT-3,4	Yes	3/4" - 4 3/4"

TABLE G (CONTINUED)

COMPONENTS SUBJECT TO EXAMINATION CATEGORY

ASME CLASS 1 SUPPORTS

WBNP
 TI-50A
 Appendix A
 Page 245 of 352
 Revision 16

System Dwg. No. Table
 RC ISI-0010-C IWB

283

Support No.	Sheet No.	Support Type						Integrally-Welded Attachment Size	Exam Required	Bolting	Acceptance Range
		Pipe Size	Restraint	Snubber	Spring	Anchor	Stroke				
RCH-31	2	4		PSA-1/4			4"	No	VT-3,4	Yes	1 5/8" - 3 3/4"
RCH-34	2	4		PSA-1			4"	No	VT-3,4	Yes	1" - 3 3/4"
RCH-35	2	4			BP-VS4B-7 (2)		4 3/4	No	VT-3,4	Yes	3/4" - 4 1/2"
RCH-36	2	4		PSA-1/2			2 1/2	No	VT-3,4	Yes	3/4" - 2 1/4"
RCH-37	2	4	X					No	VT-3	Yes	
RCH-38	2	4	X					No	VT-3	Yes	
RCH-39	2	4		PSA-10			6"	No	VT-3,4	Yes	1 13/16" - 5 3/4"
RCH-40	2	4	X					No	VT-3	Yes	
RCH-41	2	4		PSA-3			5"	No	VT-3,4	Yes	1 1/16" - 4 3/4"
RCH-54	2	6	X					No	VT-3	Yes	
RCH-55	2	6		PSA-1/2			2 1/2	No	VT-3,4	Yes	5/8" - 2 1/4"
RCH-57	2	6	X					No	VT-3	Yes	
RCH-151	3	3		PSA-3			5"	No	VT-3,4	Yes	1/4" - 3 15/16"
RCH-152	3	3		PSA-1/4			4"	No	VT-3,4	Yes	1 1/2" - 3 3/4"
RCH-153	3	3	X					No	VT-3	Yes	

TABLE G (CONTINUED)
COMPONENTS SUBJECT TO EXAMINATION CATEGORY
 ASME CLASS 1 SUPPORTS

WBNP
 TI-50A
 Appendix A
 Page 246 of 362
 Revision 16

<u>System</u>		<u>Dwg. No.</u>		<u>Table</u>							
RC		ISI-0010-C		IWB							
Support No.	Sheet No.	<u>Support Type</u>					Integrally-Welded Attachment Size	Exam Required	Bolting	Acceptance Range	
		Pipe Size	Restraint	Snubber	Spring	Anchor					Stroke
RCH-155	3	3		PSA-3			5"	No	VT-3,4	Yes	3/8" - 4 11/16"
RCH-156	3	3	X					No	VT-3	No	
RCH-157	3	3		PSA-1			4"	No	VT-3,4	Yes	1 1/2" - 3 3/4"
RCH-163	3	3			BP-VS2C-9		2 3/8	No	VT-3,4	Yes	11/16" - 2 1/8"
RCH-164	3	3		PSA-1			4"	No	VT-3,4	Yes	1/4" - 3 3/8"
RCH-165	3	3	X					No	VT-3	Yes	
RCH-166	3	3	X					No	VT-3	Yes	
RCH-167	3	3		PSA-1			4"	No	VT-3,4	Yes	1/4" - 1 7/8"
RCH-168	3	3	X					No	VT-3	Yes	
RCH-192	4	3		PSA-1			4"	No	VT-3,4	Yes	1" - 3 3/4"
RCH-193	4	3		PSA-3			5"	No	VT-3,4	Yes	1 5/8" - 4 3/4"
RCH-194	4	3		PSA-3			5"	No	VT-3,4	Yes	7/16" - 4 3/4"
RCH-195	4	3		PSA-1/4			4"	No	VT-3,4	Yes	1 1/2" - 3 3/4"
RCH-196	4	3	X					No	VT-3	Yes	

284

TABLE G (CONTINUED)
COMPONENTS SUBJECT TO EXAMINATION CATEGORY

WBNP
 TI-50A
 Appendix A
 Page 247 of 362
 Revision 16

ASME CLASS 1 SUPPORTS

System Dwg. No. Table
 RC ISI-0010-C IWB

Support No.	Sheet No.	Support Type						Integrally-Welded Attachment Size	Exam Required	Bolting	Acceptance Range	
		Pipe Size	Restraint	Snubber	Spring	Anchor	Stroke					
RCH-197	4	3	X					No	VT-3	Yes		
RCH-198	4	3	X					No	VT-3	Yes		
RCH-199	4	3			PSA-1			4"	No	VT-3,4	Yes	1 7/8" - 3 3/4"
RCH-200	4	3	X						No	VT-3	No	
RCH-201	4	3			PSA-1/2			2 1/2"	No	VT-3,4	Yes	1/4" - 1 13/16"
RCH-202	4	3	X						No	VT-3	Yes	
RCH-203	4	3	X						No	VT-3	Yes	
RCH-204	4	3			PSA-1			4"	No	VT-3,4	Yes	2 7/16" - 3 3/4"
RCH-246	5	3				BP-3200-B6		2 3/8"	No	VT-3,4	Yes	1/4" - 1 15/16"
RCH-251	5	3			PSA-1/2			2 1/2"	No	VT-3,4	Yes	3/8" - 1 7/8"
RCH-252	5	3			PSA-1/4			4"	No	VT-3,4	Yes	2 3/8" - 3 3/4"
RCH-253	5	3	X						No	VT-3	Yes	
RCH-255	5	3			PSA-1/2			2 1/2"	No	VT-3,4	Yes	1/4" - 2 1/16"
RCH-257	5	3			PSA-1			4"	No	VT-3,4	Yes	2 3/16" - 3 3/4"

285

TABLE G (CONTINUED)
COMPONENTS SUBJECT TO EXAMINATION CATEGORY
 ASME CLASS 1 SUPPORTS

WBNP
 TI-50A
 Appendix A
 Page 248 of 362
 Revision 16

System Dwg. No. Table
 RC ISI-0010-C IWB

286

Support No.	Sheet No.	Support Type					Integrally-Welded Attachment Size	Exam Required	Bolting	Acceptance Range
		Pipe Size	Restraint	Snubber	Spring	Anchor Stroke				
RCH-263	5	3			BP-VS2C-10	2 3/8	No	VT-3,4	Yes	5/16" - 1 3/4"
RCH-264	5	3		PSA-1/4		4"	No	VT-3,4	Yes	5/16" - 3 5/16"
RCH-265	5	3	X				No	VT-3	Yes	
RCH-266	5	3	X				No	VT-3	Yes	
RCH-267	5	3	X				No	VT-3	Yes	
RCH-268	5	3		PSA-1		4"	No	VT-3,4	Yes	1/4" - 1 3/4"
RCH-301	6	3		PSA-1		4"	No	VT-3,4	Yes	9/16" - 3 5/16"
RCH-302	6	3		PSA-1/4		4"	No	VT-3,4	Yes	1 9/16" - 3 3/4"
RCH-303	6	3	X				No	VT-3	Yes	
RCH-305	6	3		PSA-1		4"	No	VT-3,4	Yes	3/8" - 3 5/8"
RCH-306	6	3	X				No	VT-3	Yes	
RCH-307	6	3		PSA-1		4"	No	VT-3,4	Yes	2" - 3 3/4"
RCH-313	6	3			BP-VS2C-9	2 3/8	No	VT-3,4	Yes	3/8" - 2 1/16"
RCH-314	6	3		PSA-1		4"	No	VT-3,4	Yes	5/16" - 3 5/8"
RCH-315	6	3	X				No	VT-3	Yes	

TABLE G (CONTINUED)

COMPONENTS SUBJECT TO EXAMINATION CATEGORY

ASME CLASS 1 SUPPORTS

WBNP
 TI-50A
 Appendix A
 Page 249 of 362
 Revision 16

<u>System</u>		<u>Dwg. No.</u>		<u>Table</u>						
RC		ISI-0010-C		IWB						
Support No.	Sheet No.	<u>Support Type</u>					Integrally-Welded Attachment Size	Exam Required	Bolting	Acceptance Range
		Pipe Size	Restraint	Snubber	Spring	Anchor Stroke				
RCH-316	6	3	X				No	VT-3	Yes	
RCH-317	6	3	X				No	VT-3	Yes	
RCH-318	6	3		PSA-1		4"	No	VT-3,4	Yes	1/4" - 1 5/8"
RCH-146	7	2			BP-3200-CR13-6	2 3/8	No	VT-3,4	Yes	1/4" - 1 13/16"
RCH-147	7	2	X				No	VT-3	Yes	
RCH-148	7	2		PSA-1/2		2 1/2	No	VT-3,4	Yes	1 3/4" - 2 1/4"
RCH-149	7	2	X				No	VT-3	Yes	
RCH-150	7	2		PSA-1/4		4"	No	VT-3,4	Yes	1 9/16" - 3 3/4"
RCH-158	7	2	X				No	VT-3	Yes	
RCH-159	7	2	X				No	VT-3	Yes	
RCH-160	7	2		PSA-1/4		4"	No	VT-3,4	Yes	1/4" - 1 3/4"
RCH-161	7	2	X				No	VT-3	Yes	
RCH-162	7	2		PSA-1		4"	No	VT-3,4	Yes	1/4" - 1 5/8"
RCH-173	7	2		PSA-3		5"	No	VT-3,4	Yes	1 1/2" - 4 1/2"

TABLE G (CONTINUED)

COMPONENTS SUBJECT TO EXAMINATION CATEGORY

ASME CLASS 1 SUPPORTS

WBNP
 TI-50A
 Appendix A
 Page 250 of 362
 Revision 16

System Dwg. No. Table
 RC ISI-0010-C IWB

Support No.	Sheet No.	Pipe Size	Support Type					Integrally-Welded Attachment Size	Exam Required	Bolting	Acceptance Range	
			Restraint	Snubber	Spring	Anchor	Stroke					
RCH-189	8	2			BP-VSID-8			1 3/16	No	VT-3,4	Yes	7/16" - 1 15/16"
RCH-190	8	2	X						No	VT-3	Yes	
RCH-191	8	2		PSA-1/2				2 1/2	No	VT-3	Yes	1 15/16" - 2 1/4"
RCH-205	8	2	X						No	VT-3	Yes	
RCH-206	8	2	X						No	VT-3	Yes	
RCH-207	8	2		PSA-1				4"	No	VT-3,4	Yes	5/16" - 3 5/8"
RCH-208	8	2		PSA-1				4"	No	VT-3,4	Yes	5/16" - 1 9/16"
RCH-209	8	2	X						No	VT-3	Yes	
RCH-210	8	2		PSA-1				4"	No	VT-3,4	Yes	1/4" - 2 1/4"
RCH-215	8	2		PSA-3				5"	No	VT-3,4	Yes	7/8" - 3 15/16"
RCH-247	9	2	X						No	VT-3	Yes	
RCH-248	9	2		PSA-1/4				4"	No	VT-3,4	Yes	1/4" - 2 1/8"
RCH-250	9	2		PSA-1/4				4"	No	VT-3,4	Yes	2 3/8" - 3 3/4"
RCH-258	9	2	X						No	VT-3	Yes	
RCH-259	9	2	X						No	VT-3	Yes	
RCH-260	9	2		PSA-1				4"	No	VT-3,4	Yes	1/4" - 1 9/16"

288

TABLE G (CONTINUED)
COMPONENTS SUBJECT TO EXAMINATION CATEGORY
 ASME CLASS 1 SUPPORTS

WBNP
 TI-50A
 Appendix A
 Page 251 of 362
 Revision 16

System Dwg. No. Table
 RC ISI-0010-C IWB

Support No.	Sheet No.	Support Type					Integrally-Welded Attachment Size	Exam Required	Bolting	Acceptance Range	
		Pipe Size	Restraint	Snubber	Spring	Anchor Stroke					
RCH-261	9	2	X				No	VT-3	No		
RCH-262	9	2		PSA-1			4"	No	VT-3,4	Yes	2 3/4" - 3 3/4"
RCH-296	10	2			BP-VS2C-9		2 3/8"	No	VT-3,4	Yes	19/64" - 1 3/4"
RCH-297	10	2	X					No	VT-3	Yes	
RCH-298	10	2		PSA-1			4"	No	VT-3,4	Yes	2 1/16" - 3 3/4"
RCH-299	10	2	X					No	VT-3	Yes	
RCH-300	10	2		PSA-1/4			4"	No	VT-3,4	Yes	1 5/8" - 3 3/4"
RCH-308	10	2	X					No	VT-3	Yes	
RCH-309	10	2	X					No	VT-3	Yes	
RCH-310	10	2		PSA-1			4"	No	VT-3,4	Yes	1/4" - 1 7/16"
RCH-311	10	2	X					No	VT-3	Yes	
RCH-312	10	2		PSA-3			5"	No	VT-3,4	Yes	2 5/16" - 4 3/4"
RCH-319	10	2		PSA-3			5"	No	VT-3,4	Yes	1/4" - 3 7/8"
RCH-333	11	2		PSA-1/2			2 1/2"	No	VT-3,4	Yes	1/4" - 1 1/8"
RCH-334	11	2		PSA-1	BP-VS2A-4		4"	No	VT-3,4	Yes	1/4" - 3 1/4"
							2 3/8"				1/4" - 1 1/4"

289

TABLE G (CONTINUED)

COMPONENTS SUBJECT TO EXAMINATION CATEGORY

ASME CLASS 1 SUPPORTS

WBNP
 TI-50A
 Appendix A
 Page 252 of 362
 Revision 16

System Dwg. No. Table
 RC ISI-0010-C IWB

Support No.	Sheet No.	Support Type					Integrally-Welded Attachment Size	Exam Required	Bolting	Acceptance Range	
		Pipe Size	Restraint	Snubber	Spring	Anchor					Stroke
RCH-335	11	2		PSA 1/4(2)			4"(vert) 4"(horz)	No	VT-3,4	Yes	1/4" - 3 1/16" 1/4" - 2 1/16"
RCH-347	11	2		PSA-1/4			4"	No	VT-3,4	Yes	1/4" - 2 5/8"
RCH-348	11	2			BP-3400-4C		4 3/4	No	VT-3,4	Yes	1/4" - 3 5/8"
RCH-349	11	2		PSA-1/4			4"	No	VT-3,4	Yes	7/8" - 3 3/4"
RCH-350	11	2		PSA-1/4(2)			4"(vert) 4"(horz)	No	VT-3,4	Yes	1/4" - 3 1/16" 1/4" - 2 1/8"
RCH-363	11	2		PSA-1/2			2 1/2	No	VT-3,4	Yes	1/4" - 1 1/8"
RCH-364	11	2		PSA-1	BP-VS2B-3		4" 2 3/8"	No	VT-3,4	Yes	1/4" - 3 5/16" 1/4" - 1 11/16"
RCH-365	11	2		PSA-1/4 (2)			4"(vert) 4"(horz)	No	VT-3,4	Yes	1/4" - 2 15/16" 1 7/8" - 3 3/4"
RCH-378	11	2		PSA-1/2			2 1/2	No	VT-3,4	Yes	1/4" - 1 5/16"
RCH-379	11	2		PSA-1/2	BP-VS2B-3		2 1/2 2 3/8	No	VT-3,4	Yes	1/4" - 2" 1/4" - 1 1/2"
RCH-380	11	2		PSA-1/4(2)			4"(vert) 4"(horz)	No	VT-3,4	Yes	1/4" - 3 5/16" 1 13/16" - 3 3/4"

290

TABLE G (CONTINUED)

COMPONENTS SUBJECT TO EXAMINATION CATEGORY

ASME CLASS 1 SUPPORTS

WBNP
 TI-50A
 Appendix A
 Page 253 of 362
 Revision 16

System Dwg. No. Table
 RHR ISI-0020-C IWB

Support No.	Sheet No.	Support Type					Integrally-Welded Attachment Size	Exam Required	Bolting	Acceptance Range
		Pipe Size	Restraint	Snubber	Spring	Anchor				
RHRH-2	1	14	X				No	VT-3	Yes	
RHRH-5	1	14	X				No	VT-3	Yes	
RHRH-6	1	14	X				No	VT-3	Yes	
RHRH-7	1	14		PSA-10 (2)		6"	No	VT-3,4	Yes	2 3/8" - 5 3/4"
RHRH-8	1	14		PSA-35 (2)		6"	No	VT-3,4	Yes	1 1/4" - 5 1/8"
RHRH-10	1	14	X				No	VT-3	Yes	
RHRH-11	1	10		PSA-10		6"	No	VT-3,4	Yes	1/4" - 3 13/16"
RHRH-12	1	10	X				No	VT-3	No	
RHRH-20	1	14		PSA-10 (2)		6"	No	VT-3,4	Yes	1 1/8" - 5 3/4"
RHRH-22	1	14			BP-VSIF-18	1 3/16	No	VT-3	Yes	3/8" - 1/2"
RHRH-23	1	14		PSA-35		6"	No	VT-3, 4	Yes	1/4" - 5 1/2"
SIH-365	7	6		PSA-10		6"	No	VT-3,4	Yes	3/4" - 5 1/4"
SIH-366	7	6		PSA-10		6"	No	VT-3,4	Yes	1 3/8" - 5 3/4"
SIH-367	7	8			BP-VS2F	2 3/8	No	VT-3	Yes	1/2 - 2 1/8"
SIH-368	7	8		PSA-10		6"	No	VT-3,4	Yes	1/4" - 5 3/8"
SIH-369	7	8	X				No	VT-3	Yes	

291

TABLE G (CONTINUED)

COMPONENTS SUBJECT TO EXAMINATION CATEGORY

ASME CLASS 1 SUPPORTS

WBNP
 TI-50A
 Appendix A
 Page 254 of 362
 Revision 16

System Dwg. No. Table
 RHR ISI-0020-C IWB

Support No.	Sheet No.	Support Type						Integrally-Welded Attachment Size	Exam Required	Bolting	Acceptance Range
		Pipe Size	Restraint	Snubber	Spring	Anchor	Stroke				
SIH-370	7	8	X					No	VT-3	Yes	
SIH-340	8	8			PSA-35		6"	No	VT-3,4	Yes	1 1/4" - 5 3/4"
SIH-341	8	8			PSA-10		6"	No	VT-3,4	Yes	11/16" - 5 3/4"
SIH-342	8	8				BP-VS4B	4 3/4	No	VT-3	Yes	5/8" - 4 1/2"
SIH-343	8	8	X					No	VT-3	Yes	
SIH-344	8	8			PSA-3		5"	No	VT-3,4	Yes	1/4" - 3 3/4"
SIH-345	8	8	X					No	VT-3	Yes	
SIH-346	8	8	X					No	VT-3	Yes	
SIH-596	8	2			PSA-1		4"	No	VT-3,4	Yes	3/8" - 3 3/4"
SIH-597	8	8			PSA-1/4		4"	No	VT-3,4	Yes	1/4" - 3 9/16"
SIH-598	8	8			PSA-1/4		4"	No	VT-3,4	Yes	5/16" - 3 3/4"
SIH-602	8	8			PSA-10		6"	No	VT-3,4	No	7/8" - 5 3/4"
SIH-388	7	2	X					No	VT-3	Yes	
SIH-387	7	2	X					No	VT-3	Yes	

292

TABLE G (CONTINUED)

COMPONENTS SUBJECT TO EXAMINATION CATEGORY

ASME CLASS 1 SUPPORTS

WBNP
 TI-50A
 Appendix A
 Page 255 of 362
 Revision 16

System		Dwg. No.		Table							
SIS		ISI-0021-C		IWB							
Support No.	Sheet No.	Support Type					Integrally-Welded Attachment Size	Exam Required	Bolting	Acceptance Range	
		Pipe Size	Restraint	Snubber	Spring	Anchor Stroke					
SIH-065	4	6		PSA-3			5"	No	VT-3,4	Yes	2 3/8" - 4 3/4"
SIH-066	4	6		PSA-3			5"	No	VT-3,4	Yes	11/16" - 4 3/4"
SIH-067	4	6	X					No	VT-3	Yes	
SIH-068	4	6	X					No	VT-3	Yes	
SIH-070	4	10	X					No	VT-3	Yes	
SIH-071	4	10		PSA-35			6"	No	VT-3,4	Yes	1/4" - 5 5/8"
SIH-072	4	10	X					No	VT-3	Yes	
SIH-073	4	10		PSA-10			6"	No	VT-3,4	Yes	1/4" - 5 11/16"
SIH-080	4	6			BP-VS2B (2)		2 3/8"	No	VT-3	Yes	1/4" - 1 11/16"
SIH-081	4	6		PSA-3			5"	No	VT-3,4	Yes	15/16" - 4 3/4"
SIH-082	4	6	X					No	VT-3	Yes	
SIH-083	4	6	X					No	VT-3	Yes	
SIH-084	4	10	X					No	VT-3	Yes	
SIH-085	4	10		PSA-10 (2)			6"	No	VT-3,4	Yes	1/4" - 5 3/8"
SIH-086	4	10		PSA-35			6"	No	VT-3,4	Yes	1/4 - 5 1/4"

TABLE G (CONTINUED)

COMPONENTS SUBJECT TO EXAMINATION CATEGORY

ASME CLASS 1 SUPPORTS

WBNP
 TI-50A
 Appendix A
 Page 256 of 362
 Revision 16

System Dwg. No. Table
 SIS ISI-0021-C IWB

Support No.	Sheet No.	Pipe Size	Support Type				Integrally-Welded Attachment Size	Exam Required	Bolting	Acceptance Range
			Restraint	Snubber	Spring	Anchor Stroke				
SIH-087	4	10	X				No	VT-3	Yes	
SIH-088	4	10	X				No	VT-3,4	Yes	
SIH-089	4	10	X				No	VT-3,4	Yes	
SIH-090	4	10	X				No	VT-3	Yes	
47A435-9-69	4	10	X				No	VT-3	Yes	
SIH-1	7	10		PSA-35		6"	No	VT-3,4	Yes	1 7/16" - 5 3/4"
SIH-2	7	10			BP-VS2B	2 3/8"	No	VT-3	Yes	9/16" - 2 1/8"
SIH-3	7	10		PSA-3		5"	No	VT-3,4	Yes	11/16" - 4 5/8"
SIH-4	7	10	X				No	VT-3	Yes	
SIH-5	7	10	X				No	VT-3	Yes	
SIH-6	7	10	X				No	VT-3	Yes	
SIH-7	7	10	X				No	VT-3	No	
SIH-8	7	10		PSA-10		6"	No	VT-3,4	Yes	1/4" - 4 7/8"
SIH-10	7	6	X				No	VT-3	Yes	
SIH-11	7	6		PSA-1		4"	No	VT-3,4	Yes	3/8" - 3 3/4"

TABLE G (CONTINUED)

COMPONENTS SUBJECT TO EXAMINATION CATEGORY

ASME CLASS 1 SUPPORTS

WBNP
 TI-50A
 Appendix A
 Page 257 of 362
 Revision 16

System Dwg. No. Table
 SIS ISI-0021-C IWB

Support No.	Sheet No.	Support Type					Integrally-Welded Attachment Size	Exam Required	Bolting	Acceptance Range
		Pipe Size	Restraint	Snubber	Spring	Anchor Stroke				
SIH-12	7	6	X				No	VT-3	Yes	
SIH-451	7	10			BP-VS1A	1 3/16	No	VT-3,4	Yes	7/16" - 15/16"
SIH-452	7	10		PSA-10		6"	No	VT-3,4	Yes	7/16" - 5 3/4"
SIH-453	7	10		PSA-35		6"	No	VT-3,4	Yes	9/16" - 5 3/4"
SIH-454	7	10		PSA-10 (2)		6"	No	VT-3,4	Yes	1/4" - 5 11/16"
SIH-455	7	10	X				No	VT-3	Yes	
SIH-456	7	10	X				No	VT-3	Yes	
SIH-458	7	10		PSA-35		6"	No	VT-3,4	Yes	1/4" - 4 5/8"
SIH-459	7	10		PSA-3		5"	No	VT-3,4	Yes	1/4" - 4 1/8"
SIH-444	7	10			BP-VS1B	1 3/16	No	VT-3	Yes	1/4" - 13/16"
SIH-480	7	10		PSA-3		5"	No	VT-3,4	Yes	1/4" - 4 5/8"
SIH-482	7	10	X				No	VT-3	No	
47A435-7-60	7	10		PSA-35		6"	No	VT-3,4	Yes	1 7/16" - 5 3/4"
SIH-461	7	6	X				No	VT-3	Yes	
SIH-462	7	6		PSA-3 (2)		5"	No	VT-3,4	Yes	1/2" - 4 3/4"

TABLE G (CONTINUED)
COMPONENTS SUBJECT TO EXAMINATION CATEGORY
 ASME CLASS 1 SUPPORTS

WBNP
 TI-50A
 Appendix A
 Page 260 of 362
 Revision 16

System Dwg. No. Table
 SIS ISI-0021-C IWB

Support No.	Sheet No.	Support Type						Integrally-Welded Attachment Size	Exam Required	Bolting	Acceptance Range
		Pipe Size	Restraint	Snubber	Spring	Anchor	Stroke				
RHRH-18	10	2	X					No	VT-3	No	
RHRH-19	10	2	X					No	VT-3	No	
RHRH-21	10	2	X					No	VT-3	No	
SIH-38	10	2		PSA-1/4 (2)			4"	No	VT-3,4	Yes	1/4" - 3 11/16"
SIH-39	10	2		PSA-1/4			4"	No	VT-3,4	Yes	9/16" - 3 3/4"
47A435-8-34	10	6			BPVS1GB (2)		1 3/16"	No	VT-3,4	Yes	3/8" - 15/16"
47A435-8-35	10	2		PSA-1			4"	No	VT-3,4	Yes	1/4" - 2 13/16"
47A435-8-36	10	2		PSA-1			4"	No	VT-3,4	Yes	1/4" - 2 7/8"
47A435-8-37	10	2	X					No	VT-3	No	
47A435-8-38	10	2		PSA-1/4			4"	No	VT-3,4	No	1 1/16" - 3 3/4"
47A435-8-39	10	2		PSA-1/4			4"	No	VT-3,4	Yes	1/4" - 3 9/16"
47A435-8-40	10	2		PSA-1/4			4"	No	VT-3,4	Yes	1/4 - 3 5/16"

298

TABLE G (CONTINUED)

COMPONENTS SUBJECT TO EXAMINATION CATEGORY

ASME CLASS 1 SUPPORTS

WBNP
 TI-50A
 Appendix A
 Page 265 of 362
 Revision 16

System Dwg. No. Table
 SIS ISI-0021-C IWB

Support No.	Sheet No.	Support Type				Stroke	Integrally-Welded Attachment Size	Exam Required	Bolting	Acceptance Range
		Pipe Size	Restraint	Snubber	Spring					
SIH-205	13	1 1/2	X				No	VT-3	No	
SIH-206	13	1 1/2	X				No	VT-3	Yes	
SIH-209	13	1 1/2	X				No	VT-3	No	
SIH-211	13	1 1/2		PSA-1/2		2 1/2	No	VT-3	No	1 1/4" - 2 1/4"
SIH-156	13	1 1/2		PSA-1/4		4"	No	VT-3,4	Yes	1" - 3 3/4"
SIH-157	13	1 1/2	X				No	VT-3	Yes	
SIH-158	13	1 1/2	X				No	VT-3	No	
SIH-159	13	1 1/2	X				No	VT-3	Yes	
SIH-160	13	1 1/2		PSA-1/4		4"	No	VT-3,4	Yes	1/4" - 2 1/2"
SIH-161	13	1 1/2		PSA-1/4		4"	No	VT-3,4	Yes	3/8" - 3 11/16"
SIH-162	13	1 1/2	X			4"	No	VT-3	Yes	7/16" - 3 3/4"
SIH-163	13	1 1/2		PSA-1/4			No	VT-3	Yes	
SIH-164	13	1 1/2		PSA-1/4		4"	No	VT-3,4	Yes	1/4" - 3 1/16"
SIH-165	12	1 1/2			BP-VS1B	1 3/16	No	VT-3	Yes	7/16" - 15/16"
SIH-545	13	1 1/2	X				No	VT-3	Yes	

303

TABLE G (CONTINUED)

COMPONENTS SUBJECT TO EXAMINATION CATEGORY

ASME CLASS 1 SUPPORTS

WBNP
 TI-50A
 Appendix A
 Page 266 of 362
 Revision 16

Support No.	Sheet No.	Support Type					Integrally-Welded Attachment Size	Exam Required	Bolting	Acceptance Range
		Pipe Size	Restraint	Snubber	Spring	Anchor Stroke				
SIH-551	13	1 1/2		PSA-1/2		2 1/2	No	VT-3,4	Yes	1 1/4" - 2 1/4"
SIH-552	13	1 1/2		PSA-1/2		2 1/2	No	VT-3,4	Yes	1/4" - 1 7/16"
UHIH-040	1	8	X				No	VT-3	Yes	
UHIH-043	1	8	X				No	VT-3	Yes	
UHIH-044	1	8	X				No	VT-3	No	
UHIH-045	1	8	X				No	VT-3	Yes	
UHIH-063	1	8		PSA-35		6"	No	VT-3,4	Yes	1 1/16" - 5 3/4"
UHIH-064	1	8		PSA-35		6"	No	VT-3,4	Yes	1 3/16" - 5 3/4"
UHIH-065	1	8	X				No	VT-3	Yes	
UHIH-066	1	8	X				No	VT-3	No	
UHIH-067	1	8		PSA-3		5"	No	VT-3,4	Yes	1/4" - 3 7/8"
47W435-17-13	1	8		PSA-1 (2)		4"	Yes (8 lugs 1/2" thick)	VT-3,4	No	1/4" - 3 11/16"
UHIH-068	1	8		PSA-1		4"	No	VT-3,4	Yes	1/4" - 2 1/2"
UHIH-069	1	8			BP-VSIF-12	1 3/16	No	VT-3,4	Yes	3/8" - 15/16"

TABLE G (CONTINUED)

COMPONENTS SUBJECT TO EXAMINATION CATEGORY

ASME CLASS 1 SUPPORTS

WBNP
 TI-50A
 Appendix A
 Page 267 of 362
 Revision 16

<u>System</u>		<u>Dwg. No.</u>		<u>Table</u>							
UHI		ISI-0025-C		IWB							
Support No.	Sheet No.	<u>Support Type</u>					Integrally-Welded Attachment Size	Exam Required	Bolting	Acceptance Range	
		Pipe Size	Restraint	Snubber	Spring	Anchor Stroke					
UHIH-070	1	8		PSA-3			5"	No	VT-3,4	Yes	1/4" - 4 7/16"
UHIH-071	1	8		PSA-10			6"	No	VT-3,4	Yes	1/4" - 5 5/16"
UHIH-072	1	8			BP-VS4C-11		4 3/4"	No	VT-3,4	Yes	1 1/8" - 4 1/2"
UHIH-073	1	8		PSA-10			6"	No	VT-3,4	Yes	1 1/8" - 5 3/4"
UHIH-074	1	8		PSA-3			5"	No	VT-3,4	Yes	1 7/16" - 4 3/4"
UHIH-075	1	8	X					No	VT-3	No	
UHIH-079	1	5		PSA-3			5"	No	VT-3,4	Yes	9/16" - 4 3/4"
UHIH-084	1	2	X					No	VT-3	Yes	
UHIH-085	1	2	X					No	VT-3	Yes	
UHIH-180	1	5		PSA-10			6"	No	VT-3,4	Yes	1/2" - 5 3/4"
UHIH-046	2	8	X					No	VT-3	No	
UHIH-047	2	8	X					No	VT-3	No	
UHIH-048	2	8	X					No	VT-3	No	
UHIH-049	2	8	X					No	VT-3	No	
UHIH-050	2	8	X					No	VT-3	No	

TABLE G (CONTINUED)

COMPONENTS SUBJECT TO EXAMINATION CATEGORY

ASME CLASS 1 SUPPORTS

WBNP
 TI-50A
 Appendix A
 Page 269 of 362
 Revision 16

System Dwg. No. Table
 UHI ISI-0025-C IWB

Support No.	Sheet No.	Support Type					Integrally-Welded Attachment Size	Exam Required	Bolting	Acceptance Range
		Pipe Size	Restraint	Snubber	Spring	Anchor Stroke				
UHIH-005	3	12	X				No	VT-3	Yes	
UHIH-006	3	12	X				No	VT-3	No	
UHIH-007	3	12	X				No	VT-3	Yes	
UHIH-024	3	5		PSA-10		6"	No	VT-3,4	Yes	9/16" - 5 3/4"
UHIH-025	3	5		PSA-10		6"	No	VT-3,4	Yes	11/16" - 5 3/4"
UHIH-026	3	8	X				No	VT-3	No	
UHIH-027	3	8	X				No	VT-3	No	
UHIH-028	3	8		PSA-3		5"	No	VT-3,4	Yes	1/4" - 3 15/16"
UHIH-029	3	8		PSA-3		5"	No	VT-3,4	Yes	
UHIH-033	3	8		PSA-10		6"	No	VT-3,4	Yes	2 1/2" - 5 3/4"
UHIH-034	3	8			BP-VS46B-9	4 3/4	No	VT-3	Yes	1/4" - 3 15/32"
UHIH-036	3	8		PSA-35		6"	No	VT-3,4	Yes	15/16" - 5 3/4"
UHIH-039	3	8			BP-VS26-10	2 3/8	No	VT-3,4	Yes	3/4" - 2 1/8"
UHIH-087	3	2	X				No	VT-3	Yes	
UHIH-31	3	8		PSA-10		6"	Yes (2 lug 1/2" thick)	VT-3,4	Yes	1/4" - 5 1/8"

307

TABLE G (CONTINUED)

COMPONENTS SUBJECT TO EXAMINATION CATEGORY

ASME CLASS 1 SUPPORTS

WBNP
 TI-50A
 Appendix A
 Page 270 of 362
 Revision 16

<u>System</u>		<u>Dwg. No.</u>		<u>Table</u>							
UHI		ISI-0025-C		IWB							
Support No.	Sheet No.	Pipe Size	<u>Support Type</u>				Integrally-Welded Attachment Size	Exam Required	Bolting	Acceptance Range	
			Restraint	Snubber	Spring	Anchor					Stroke
UHIH-30	3	8		PSA-3			5"	No	VT-3,4	Yes	7/16" - 4 3/4"
UHIH-032	3	8		PSA-3			5"	No	VT-3,4	Yes	1/2" - 4 3/4"
UHIH-150	3	8		PSA-35			6"	No	VT-3,4	Yes	3/4" - 5 3/4"
UHIH-008	4	8	X					No	VT-3	Yes	
UHIH-009	4	8	X					No	VT-3	Yes	
UHIH-010	4	8	X					No	VT-3	No	
UHIH-011	4	8	X					No	VT-3	No	
UHIH-020	4	8	X					No	VT-3	No	
UHIH-012	4	8		PSA-3			5"	No	VT-3,4	Yes	1/4" - 3 7/8"
UHIH-013	4	8		PSA-3			5"	No	VT-3,4	Yes	1/4" - 4 9/16"
UHIH-014	4	8			BP-VS1F-14		1 3/16	No	VT-3	Yes	7/16" - 15/16"
UHIH-015	4	8		PSA-3			5"	No	VT-3,4	Yes	1/4" - 2 5/16"
UHIH-016	4	8			BP-VS2F-8(2)		2 3/8	No	VT-3	Yes	1" - 2 1/8"
UHIH-018	4	8		PSA-3			5"	No	VT-3,4	Yes	5/16" - 3 7/16"
UHIH-021	4	8		PSA-35			6"	No	VT-3,4	Yes	1 9/16" - 5 3/4"
UHIH-038	4	8	X					No	VT-3	Yes	

308

TABLE G (CONTINUED)

COMPONENTS SUBJECT TO EXAMINATION CATEGORY

ASME CLASS 1 SUPPORTS

WBNP
 TI-50A
 Appendix A
 Page 271 of 362
 Revision 16

System		Dwg. No.	Table		Support Type							Integrally-Welded Attachment Size	Exam Required	Bolting	Acceptance Range
Support No.	Sheet No.	Pipe Size	Restraint	Snubber	Spring	Anchor	Stroke								
UHI CVC		ISI-0025-C ISI-0026-C		IWB IWB											
UHIH-022	4	5		PSA-10			6"	No	VT-3,4	Yes	11/16" - 5 3/4"				
UHIH-023	4	5		PSA-3			5"	No	VT-3,4	Yes	3/4" - 4 3/4"				
UHIH-035	4	8	X					No	VT-3	Yes					
UHIH-037	4	8		PSA-35			6"	No	VT-3,4	Yes	1 3/8" - 5 3/4"				
CVCH-290	1	3			BP-3400		4 3/4"	No	VT-3,4	Yes	1/4" - 3 3/8"				
CVCH-291	1	3		PSA-1			4"	No	VT-3,4	Yes	2 5/16" - 3 3/4"				
CVCH-292	1	3		PSA-1			4"	No	VT-3,4	Yes	1/4" - 5/16"				
CVCH-293	1	3	X					No	VT-3	Yes					
CVCH-294	1	3		PSA-1			4"	No	VT-3,4	Yes	1/4" - 3 1/2"				
CVCH-295	1	3		PSA-1			4"	No	VT-3,4	Yes	1/4" - 2 3/8"				
CVCH-296	1	3	X					No	VT-3	Yes					
CVCH-297	1	3	X					No	VT-3	Yes					
CVCH-298	1	3	X					No	VT-3	Yes					
CVCH-299	1	3	X					No	VT-3	Yes					
CVCH-300	1	3	X					No	VT-3	Yes					

309

TABLE G (CONTINUED)

COMPONENTS SUBJECT TO EXAMINATION CATEGORY

ASME CLASS 1 SUPPORTS

WBNP
 TI-50A
 Appendix A
 Page 273 of 362
 Revision 16

Support No.	Sheet No.	System	Dwg. No.	Support Type					Integrally-Welded Attachment Size	Exam Required	Bolting	Acceptance Range
				Table	Pipe Size	Restraint	Snubber	Spring				
		CVC	ISI-0026-C									
		CVC	ISI-0063-C	IWB								
CVCH-331	2								No	VT-3	Yes	
CVCH-383	2				X				No	VT-3	Yes	
CVCH-384	2					PSA-1/4"		4"	No	VT-3,4	Yes	5/16" - 3 3/4"
CVCH-385	2						BP-VS1B-6	1 3/16		No VT-3,4	Yes	5/16" - 15/16"
CVCH-1	1				X				No	VT-3	Yes	
CVCH-2	1					PSA-1/4		4"	No	VT-3,4	Yes	2 11/16" - 3 3/4"
CVCH-3	1				X				No	VT-3	Yes	
CVCH-4	1					PSA-1/4		4"	No	VT-3,4	Yes	15/16" - 3 3/4"
CVCH-5	1				X				No	VT-3	Yes	
CVCH-6	1					PSA-1/4		4"	No	VT-3,4	Yes	2 3/16" - 3 3/4"
CVCH-7	1				X				No	VT-3	Yes	
47A406-8-56	1					PSA-1/4		4"	No	VT-3,4	Yes	1 3/4" - 3 3/4"
CVCH-30	2				X				No	VT-3	Yes	
CVCH-31	2					PSA-1		4"	No	VT-3,4	Yes	1/4" - 2 1/2"

311

TABLE G (CONTINUED)

COMPONENTS SUBJECT TO EXAMINATION CATEGORY

ASME CLASS 1 SUPPORTS

WBNP
 TI-50A
 Appendix A
 Page 274 of 362
 Revision 16

System Dwg. No. Table
 CVC ISI-0063-C IWB

Support No.	Sheet No.	Support Type					Integrally-Welded Attachment Size	Exam Required	Bolting	Acceptance Range	
		Pipe Size	Restraint	Snubber	Spring	Anchor					
CVCH-32	2	2		PSA-1/4			4"	No	VT-3	Yes	5/16" - 3 3/4"
CVCH-33	2	2		PSA-1/4			4"	No	VT-3,4	Yes	1/2" - 3 3/4"
CVCH-34	2	2		PSA-1/4			4"	No	VT-3,4	Yes	1 1/2" - 3 3/4"
CVCH-35	2	2	X					No	VT-3	Yes	
CVCH-37	2	2	X					No	VT-3	Yes	
CVCH-38	2	2	X					No	VT-3	No	
CVCH-64	2	2		PSA-1/4			4"	No	VT-3,4	Yes	3/4" - 3 3/4"
CVCH-65	2	2		PSA-1/4			4"	No	VT-3,4	Yes	3/4" - 3 3/4"
CVCH-67	2	2	X					No	VT-3	Yes	
CVCH-70	3	2				BP-VS2A-13	2 3/8	No	VT-3,4	Yes	5/16" - 2 1/8"
CVCH-71	3	2	X					No	VT-3	Yes	
CVCH-72	3	2	X					No	VT-3	Yes	
CVCH-73	3	2	X					No	VT-3	Yes	
CVCH-74	3	2	X					No	VT-3	Yes	
CVCH-95	3	2		PSA-1/2			2 1/2	No	VT-3,4	Yes	1 7/8" - 2 1/4"

TABLE G (CONTINUED)

COMPONENTS SUBJECT TO EXAMINATION CATEGORY

ASME CLASS 1 SUPPORTS

WBNP
 TI-50A
 Appendix A
 Page 274b of 362
 Revision 16

System Dwg. No. Table
 RC ISI-0124-C-1 IWB

Support No.	Sheet No.	Support Type					Integrally-Welded Attachment Size	Exam Required	Bolting	Acceptance Range	
		Pipe Size	Restraint	Snubber	Spring	Anchor					Stroke
RCH-1	1	14"			BP-VS4A-17		4 3/4	No	VT-3,4	Yes	7/16" - 4 1/2"
RCH-2	1	14"		PSA-3			5" (north)	No	VT-3,4	Yes	9/16" - 4 1/4"
				PSA-10			6" (south)				9/16" - 5 1/4"
RCH-3	1	14"		PSA-10			6"	No	VT-3,4	Yes	3/8" - 5 3/4"
RCH-4	1	14"		PSA-10			6"	No	VT-3,4	Yes	1/4" - 5 5/8"
RCH-5	1	14"			BP-VS2B-16		2 3/8	No	VT-3,4	Yes	1/4" - 2"
RCH-6	1	14"		PSA-35			6"	No	VT-3,4	Yes	7/8" - 5 9/16"

312b

TABLE H
COMPONENTS SUBJECT TO EXAMINATION CATEGORY
 ASME CLASS 2 SUPPORTS

WBNP
 TI-50A
 Appendix A
 Page 275 of 362
 Revision 16

<u>System</u>		<u>Dwg. No.</u>		<u>Table</u>								
MS		ISI-0011-C		IWC								
Support No.	Sheet No.	<u>Support Type</u>					Integrally-Welded Attachment Size	Exam Required	Bolting	Acceptance Range		
		Pipe Size	Restraint	Snubber	Spring	Anchor					Stroke	
MSH-300	1	32		PSA-100			6"	No	VT-3,4	Yes	1 1/8" - 5 3/4"	
MSH-301	1	32		PSA-100			6"	No	VT-3,4	Yes	1/4" - 4 3/8"	
MSH-302	1	32			BP-VS4B(2)		4 3/4"	Yes 1" lug	VT-3,4, ST	Yes	2 1/16" - 4 1/2"	
MSH-303	1	32		PSA-35(2)			6"	Yes 1" lug	VT-3,4, ST	Yes	1 3/4" - 5 3/4"	
MSH-304	1	32		PSA-35(2)			6"	No	VT-3	Yes	1/4" - 5 7/16"	
MSH-305	1	32			BP-VS4A		4 3/4"	No	VT-3,4	Yes	1/2" - 4 1/2"	
MSH-306	1	32	X					No	VT-3,4	Yes		
MSH-307	1	32		PSA-10			6"	No	VT-3,4	Yes	1 1/16" - 5 3/4"	
MSH-308	1	32		PSA-100(2)			6"	No	VT-3,4	Yes	3/4" - 5 9/16"	
MSH-309	1	32			BP-VS2B		2 3/8"	No	VT-3	Yes	1/4" - 1 25/32"	
MSH-310	1	32	X					No	VT-3	Yes		
MSH-311	1	32	X					No	VT-3	Yes		
MSH-312	1	32		PSA-100			6"	No	VT-3,4	Yes	5/8" - 5 5/8"	
MSH-313	1	32		PSA-10			6"	No	VT-3,4	Yes	1/4" - 4 5/8"	
MSH-315	1	32	X					No	VT-3	Yes		

313

TABLE H (CONTINUED)

COMPONENTS SUBJECT TO EXAMINATION CATEGORY

ASME CLASS 2 SUPPORTS

WBNP
 TI-50A
 Appendix A
 Page 276 of 362
 Revision 16

System Dwg. No. Table
 MS ISI-0011-C IWC

Support No.	Sheet No.	Support Type					Integrally-Welded Attachment Size	Exam Required	Bolting	Acceptance Range	
		Pipe Size	Restraint	Snubber	Spring	Anchor Stroke					
MSH-340	2	32		PSA-100			6"	No	VT-3,4	Yes	15/16" - 5 3/4"
MSH-341	2	32		PSA-100			6"	No	VT-3,4	Yes	1/4" - 4 5/8"
MSH-342	2	32			BP-3400(2)		4 3/4	Yes 1" lug	VT-3,4, ST	Yes	2" - 4 1/2"
MSH-343	2	32		PSA-35(2)			6"	Yes 1" lug	VT-3,4, ST	Yes	1 3/4" - 5 3/4"
MSH-344	2	32			BP-VS4D		4 3/4	No	VT-3,4	Yes	1/2" - 4 1/2"
MSH-345	2	32	X					No	VT-3	Yes	
MSH-346	2	32		PSA-35(2)			6"	No	VT-3,4	Yes	1/4" - 5 3/4"
MSH-347	2	32	X					No	VT-3	Yes	
MSH-348	2	32		PSA-10(2)			6"	No	VT-3,4	Yes	1 1/16" - 5 3/4"
MSH-349	2	32		PSA-100			6"	No	VT-3,4	Yes	1/4" - 5 9/16"
MSH-350	2	32		PSA-10			6"	No	VT-3,4	Yes	1/4" - 4 1/2"
MSH-352	2	32	X					No	VT-3	No	
MSH-380	3	32		PSA-100			6"	No	VT-3,4	Yes	15/16" - 5 3/4"
MSH-381	3	32		PSA-100			6"	No	VT-3,4	Yes	1/4" - 4 5/8"
MSH-382	3	32			BP-VS4B		4 3/4	Yes 1" lug	VT-3,4, ST	Yes	2 1/16" - 4 1/2"

314

TABLE H (CONTINUED)

COMPONENTS SUBJECT TO EXAMINATION CATEGORY

ASME CLASS 2 SUPPORTS

WBNP
 TI-50A
 Appendix A
 Page 277 of 362
 Revision 16

System Dwg. No. Table
 MS ISI-0011-C IWC

Support No.	Sheet No.	Support Type					Integrally-Welded Attachment Size	Exam Required	Bolting	Acceptance Range
		Pipe Size	Restraint	Snubber	Spring	Anchor Stroke				
MSH-383	3	32		PSA-35		6"	Yes 1" lug	VT-3,4, ST	Yes	1 5/8" - 5 3/4"
MSH-384	3	32			BP-VS26-B	2 3/8	No	VT-3,4	Yes	5/8" - 2 1/8"
MSH-385	3	32	X				No	VT-3	Yes	
MSH-386	3	32			BP-VS4A	4 3/4	No	VT-3,4	Yes	1/4" - 3 5/8"
MSH-387	3	32		PSA-35		6"	No	VT-3,4	Yes	1 11/16" - 5 3/4"
MSH-388	3	32	X				No	VT-3	Yes	
MSH-389	3	32		PSA-3	BP-VS2F	5" 2 3/8	No	VT-3,4	Yes	13/16" - 4 3/4" 1/4" - 1 9/16"
MSH-391	3	32		PSA-100		6"	No	VT-3,4	Yes	1/4" - 5 1/2"
MSH-392	3	32		PSA-10		6"	No	VT-3,4	Yes	2" - 5 3/4"
MSH-394	3	32	X				No	VT-3	Yes	
MSH-420	4	32		PSA-100		6"	No	VT-3,4	Yes	11/16" - 5 3/4"
MSH-421	4	32		PSA-100		6"	No	VT-3,4	Yes	1/4" - 4 5/16"
MSH-422	4	32			BP-VS4B	4 3/4	Yes 1" lug	VT-3,4, ST	Yes	2 3/16" - 4 1/2"
MSH-423	4	32		PSA-35		6"	Yes 1" lug	VT-3,4, ST	Yes	1 3/4" - 5 3/4"
MSH-424	4	32	X				No	VT-3	Yes	

315

TABLE H (CONTINUED)

COMPONENTS SUBJECT TO EXAMINATION CATEGORY

ASME CLASS 2 SUPPORTS

WBNP
 TI-50A
 Appendix A
 Page 278 of 362
 Revision 16

System Dwg. No. Table
 MS ISI-0011-C IWC

316

Support No.	Sheet No.	Support Type					Integrally-Welded Attachment Size	Exam Required	Bolting	Acceptance Range	
		Pipe Size	Restraint	Snubber	Spring	Anchor Stroke					
MSH-425	4	32				BP-VS46B(2)	4 3/4	No	VT-3,4	Yes	5/8" - 4 1/2"
MSH-426	4	32	X					No	VT-3	Yes	
MSH-427	4	32				BP-VS4A	4 3/4	No	VT-3,4	Yes	1/4" - 3 5/8"
MSH-428	4	32			PSA-100		6"	No	VT-3,4	Yes	1/4" - 5 5/16"
MSH-429	4	32			PSA-35		6"	No	VT-3,4	Yes	3/4" - 5 3/4"
MSH-430	4	32	X					No	VT-3,4	Yes	
MSH-431	4	32				BP-VS2F	2 3/8	No	VT-3,4	Yes	1/4" - 1 5/8"
MSH-432	4	32	X					No	VT-3	Yes	
MSH-434	4	32			PSA-100		6"	No	VT-3,4	Yes	1/4" - 5 1/2"
MSH-435	4	32			PSA-10		6"	No	VT-3,4	Yes	1 9/16" - 5 3/4"
MSH-437	4	32	X					No	VT-3	Yes	

TABLE H (CONTINUED)

COMPONENTS SUBJECT TO EXAMINATION CATEGORY

ASME CLASS 2 SUPPORTS

WBNP
 TI-50A
 Appendix A
 Page 279 of 362
 Revision 16

System Dwg. No. Table
 RHR ISI-0020-C IWC

Support No.	Sheet No.	Support Type					Integrally-Welded Attachment Size	Exam Required	Bolting	Acceptance Range
		Pipe Size	Restraint	Snubber	Spring	Anchor Stroke				
RHRH-1	1	10	X				No	VT-3	Yes	
RHRH-4	1	14	X				No	VT-3	Yes	
47A432-2-1	2	14		PSA-3		5"	No	VT-3,4	Yes	1/4" - 3 13/16"
47A432-6-2	2	14	X				No	VT-3	Yes	
47A432-6-1	2	14		PSA-3		5"	No	VT-3,4	Yes	7/16" - 4 3/4"
SIH-V132	2	14			BP-VS2F	2 3/8	No	VT-3	Yes	5/16" - 2 1/8"
SIH-R133	2	14	X				No	VT-3	No	
SIH-V134	2	14			BP-3100	1 3/16	No	VT-3	Yes	1/4 - 15/16"
SIH-R135	2	14	X				No	VT-3	Yes	
SIH-R157	2	14	X				No	VT-3	No	
SIH-V158	2	14			BP-3100F	1 3/16	No	VT-3,4	Yes	3/8" - 15/16"
SIH-R159	2	14	X				No	VT-3	Yes	
SIH-R177	2	14	X				No	VT-3	Yes	
SIH-R178	2	14	X				No	VT-3	Yes	

317

TABLE H (CONTINUED)

COMPONENTS SUBJECT TO EXAMINATION CATEGORY

ASME CLASS 2 SUPPORTS

WBNP
 TI-50A
 Appendix A
 Page 280 of 362
 Revision 16

<u>System</u>		<u>Dwg. No.</u>		<u>Table</u>							
RHR		ISI-0020-C		IWC							
Support No.	Sheet No.	Pipe Size	<u>Support Type</u>				Integrally-Welded Attachment Size	Exam Required	Bolting	Acceptance Range	
			Restraint	Snubber	Spring	Anchor					Stroke
SIH-V179	2	14			BP-VS2B		2 3/8	No	VT-3	Yes	7/16" - 2 1/8"
SIH-V180	2	14			BP-VS2B		2 3/8	No	VT-3	Yes	3/8" - 2 1/8"
SIH-R181	2	14	X					No	VT-3	Yes	
SIH-R182	2	14	X					No	VT-3	Yes	
47A432-1-5	3	14			PSA-3(2)		5"	No	VT-3,4	Yes	1 1/16" - 4 5/8"
SIH-V136	3	14			BP-VS2F		2 3/8	No	VT-3,4	Yes	5/16" - 2 1/8"
SIH-R142	3	14			PSA-3		5"	No	VT-3,4	Yes	3/8" - 4 3/4"
SIH-V145	3	14			BP-VS2C		2 3/8	No	VT-3,4	Yes	1/4" - 2 1/8"
SIH-R146	3	14			PSA-3		5"	No	VT-3,4	Yes	5/16" - 4 11/16"
SIH-R147	3	14			PSA-10		5"	No	VT-3,4	Yes	11/16" - 4 3/4"
SIH-R148	3	14			PSA-3		6"	No	VT-3,4	Yes	3/8" - 5 5/16"
SIH-R149	3	14			PSA-3		5"	No	VT-3,4	Yes	9/32" - 4 3/4"
SIH-R137	3	14	X					No	VT-3	Yes	
SIH-R138	3	14	X					No	VT-3	Yes	
SIH-V139	3	14			BP-3100		1 3/16	No	VT-3	Yes	1/4" - 3/4"

TABLE H (CONTINUED)

COMPONENTS SUBJECT TO EXAMINATION CATEGORY

ASME CLASS 2 SUPPORTS

WBNP
 TI-50A
 Appendix A
 Page 281 of 362
 Revision 16

System Dwg. No. Table
 RHR ISI-0020-C IWC

Support No.	Sheet No.	Support Type					Integrally-Welded Attachment Size	Exam Required	Bolting	Acceptance Range	
		Pipe Size	Restraint	Snubber	Spring	Anchor					Stroke
SIH-R140	3	14	X				No	VT-3	Yes		
SIH-R141	3	14	X				No	VT-3	Yes		
SIH-V143	3	14			BP-VS2C		2 3/8	No	VT-3	Yes	3/8" - 2 1/8"
47A432-1-7	3	14	X				No	VT-3	Yes		
47A432-1-6	3	14	X				No	VT-3	Yes		
SIH-R144	3	14	X				No	VT-3	Yes		
SIH-V150	3	14			BP-VS2C		2 3/8	No	VT-3	Yes	1/4" - 2 1/8"
SIH-R151	3	14		PSA-3			5"	No	VT-3,4	Yes	1/4" - 3 5/8"
SIH-R152	3	14	X					No	VT-3	Yes	
SIH-R153	3	14	X					No	VT-3	Yes	
SIH-R155	3	14		PSA-35			6"	No	VT-3,4	Yes	1/4" - 4 1/2"
SIH-R161	3	14	X					No	VT-3	Yes	
SIH-R162	3	14	X					No	VT-3	Yes	
SIH-V163	3	14			BP-VS2F-11		2 3/8	No	VT-3	Yes	1/4" - 2 1/16"

319

TABLE H (CONTINUED)

COMPONENTS SUBJECT TO EXAMINATION CATEGORY

ASME CLASS 2 SUPPORTS

WBNP
 TI-50A
 Appendix A
 Page 282 of 352
 Revision 16

System Dwg. No. Table
 RHR ISI-0020-C IWC

Support No.	Sheet No.	Pipe Size	Support Type					Integrally-Welded Attachment Size	Exam Required	Bolting	Acceptance Range
			Restraint	Snubber	Spring	Anchor	Stroke				
SIH-R164	3	14	X					No	VT-3	Yes	
SIH-R165	3	14	X					No	VT-3	Yes	
SIH-V166	3	14			BP-VS2C	2 3/8		No	VT-3	Yes	3/8" - 2 1/8"
SIH-R168	3	14		PSA-3		5"		No	VT-3,4	Yes	1/4" - 4 5/8"
SIH-R169	3	14	X					No	VT-3,4	Yes	
SIH-R170	3	14		PSA-10		6"		No	VT-3,4	Yes	9/16" - 4 1/8"
SIH-R171	3	14	X					No	VT-3	Yes	
SIH-R173	3	14		PSA-35		6"		No	VT-3,4	Yes	1/2" - 4"
SIH-R174	3	14		PSA-35(2)		6"		No	VT-3	Yes	7/16" - 5 1/8"
SIH-R175	3	14	X					No	VT-3,4	Yes	
RHRH-R37	4	8		PSA-3		5"		No	VT-3,4	Yes	1/4" - 4 3/8"
RHRH-V38	4	8			BP-VS4F	4 3/4		No	VT-3	Yes	5/16" - 4 1/2"
RHRH-R39	4	8	X					No	VT-3	Yes	
RHRH-R86	4	8	X					No	VT-3	Yes	
RHRH-V87	4	8			BP-VS2F(2)	2 3/8		No	VT-3	Yes	1/4" - 2 1/16"

320

TABLE H (CONTINUED)

COMPONENTS SUBJECT TO EXAMINATION CATEGORY

ASME CLASS 2 SUPPORTS

WBNP
 TI-50A
 Appendix A
 Page 283 of 362
 Revision 16

System Dwg. No. Table
 RHR ISI-0020-C IWC

Support No.	Sheet No.	Support Type					Integrally-Welded Attachment Size	Exam Required	Bolting	Acceptance Range	
		Pipe Size	Restraint	Snubber	Spring	Anchor					Stroke
RHRH-R88	4	8		PSA-3			5"	No	VT-3,4	Yes	1/4" - 4 5/8"
RHRH-R89	4	8		PSA-1			4"	No	VT-3,4	Yes	3/8" - 3 3/4"
RHRH-V90	4	8			BP-VS2D		2 3/8	No	VT-3	Yes	1/4" - 2 1/8"
RHRH-R91	4	8	X					No	VT-3	Yes	
RHRH-R92	4	8	X					No	VT-3	Yes	
RHRH-R93	4	8	X					No	VT-3	Yes	
RHRH-R94	4	8	X					No	VT-3	Yes	
RHRH-R95	4	8		PSA-1			4"	No	VT-3,4	Yes	1 1/4" - 3 3/4"
RHRH-R96	4	8		PSA-1/2			2 1/2	No	VT-3,4	Yes	1 11/32" - 2 1/4"
RHRH-R97	4	8	X					No	VT-3	Yes	
RHRH-R98	4	8	X					No	VT-3	Yes	
RHRH-R99	4	8		PSA-1/4			4"	No	VT-3,4	Yes	1/4" - 3 21/32"
RHRH-R100	4	8		PSA-1/2			2 1/2	No	VT-3,4	Yes	9/16" - 2 1/4"
RHRH-R101	4	8	X					No	VT-3	Yes	
RHRH-R102	4	8	X					No	VT-3	Yes	

321

TABLE H (CONTINUED)

COMPONENTS SUBJECT TO EXAMINATION CATEGORY

ASME CLASS 2 SUPPORTS

WBNP
 TI-50A
 Appendix A
 Page 284 of 362
 Revision 16

System Dwg. No. Table
 RHR ISI-0020-C IWC

Support No.	Sheet No.	Support Type						Integrally-Welded Attachment Size	Exam Required	Bolting	Acceptance Range
		Pipe Size	Restraint	Snubber	Spring	Anchor	Stroke				
RHRH-R40	5	8		PSA-3			5"	No	VT-3,4	Yes	1/4" - 4 9/16"
RHRH-V41	5	8			BP-VS2C		2 3/8	No	VT-3	Yes	3/4" - 2 1/8"
RHRH-R42	5	8	X					No	VT-3	Yes	
RHRH-R43	5	8		PSA-1/2			2 1/2	No	VT-3,4	Yes	1/4" - 2 1/16"
RHRH-R44	5	8	X					No	VT-3	Yes	
RHRH-V45	5	8			B268-F(2)		2 1/2	No	VT-3	Yes	1/4" - 2 1/4"
RHRH-R46	5	8		PSA-1/4(2)			4"	No	VT-3,4	Yes	3/8" - 3 3/4"
RHRH-R47	5	8		PSA-1/2			2 1/2	No	VT-3,4	Yes	1/4" - 2 1/8"
RHRH-R48	5	8		PSA-1			4"	No	VT-3,4	Yes	1/4" - 3 9/16"
RHRH-V49	5	8			BP-VS2D		2 3/8	No	VT-3	Yes	3/8" - 2 1/8"
RHRH-R50	5	8	X					No	VT-3	Yes	
RHRH-R51	5	8	X					No	VT-3	Yes	
RHRH-R52	5	8	X					No	VT-3	Yes	
RHRH-V53	5	8			BP-VS4C(2)		4 3/4	No	VT-3	Yes	1" - 4 1/2"
RHRH-R54	5	8	X					No	VT-3	Yes	

322

TABLE H (CONTINUED)

COMPONENTS SUBJECT TO EXAMINATION CATEGORY

ASME CLASS 2 SUPPORTS

WBNP
 TI-50A
 Appendix A
 Page 286 of 362
 Revision 16

System Dwg. No. Table
 RHR ISI-0020-C IWC

Support No.	Sheet No.	Support Type					Integrally-Welded Attachment Size	Exam Required	Bolting	Acceptance Range
		Pipe Size	Restraint	Snubber	Spring	Anchor				
RHRH-R12	6	8	X				No	VT-3	Yes	
RHRH-R13	6	8	X				No	VT-3	Yes	
RHRH-R14	6	8		PSA-1/2(2)		2 1/2	No	VT-3,4	Yes	9/16" - 2 1/4"
RHRH-V15	6	8			BP-VS2C(2)	2 3/8	Yes 1/2"	VT-3,4	Yes	1/2" - 2 1/8"
RHRH-R16	6	8		PSA-1/2		2 1/2	No	VT-3,4	Yes	9/16" - 2 1/4"
RHRH-R17	6	8	X				No	VT-3	Yes	
RHRH-R18	6	8	X				No	VT-3	Yes	
RHRH-R19	6	8		PSA-1/2		2 1/2	No	VT-3,4	Yes	1/2" - 2 1/4"
RHRH-R20	6	8	X				No	VT-3	Yes	
RHRH-R21	6	8	X				No	VT-3	Yes	
RHRH-R22	6	12	X				No	VT-3	Yes	
RHRH-R23	6	12	X				No	VT-3	Yes	
RHRH-R24	6	12	X				No	VT-3	Yes	
RHRH-R25	6	12	X				No	VT-3	Yes	
RHRH-R26	6	12	X				No	VT-3	Yes	

324

TABLE H (CONTINUED)

COMPONENTS SUBJECT TO EXAMINATION CATEGORY

ASME CLASS 2 SUPPORTS

WBNP
 TI-50A
 Appendix A
 Page 287 of 362
 Revision 16

System Dwg. No. Table
 RHR ISI-0020-C IWC

325

Support No.	Sheet No.	Support Type						Integrally-Welded Attachment Size	Exam Required	Bolting	Acceptance Range
		Pipe Size	Restraint	Snubber	Spring	Anchor	Stroke				
RHRH-R27	6	12	X					No	VT-3	Yes	
RHRH-R28	6	12		PSA-10			6"	No	VT-3	Yes	1/4" - 5 5/16"
RHRH-R29	6	12	X					No	VT-3	Yes	
RHRH-R10	6	8		PSA-3			5"	No	VT-3,4	Yes	1/4" - 4 7/16"
RHRH-V11	6	8			BP-VS2A		2 3/8"	No	VT-3,4	Yes	1/2" - 2 1/8"
RHRH-R30	6	12	X					No	VT-3	Yes	
RHRH-R31	6	12	X					No	VT-3	Yes	
RHRH-R32	6	12	X					No	VT-3	Yes	
RHRH-R33	6	12	X					No	VT-3	Yes	
RHRH-R34	6	12	X					No	VT-3,4	Yes	
RHRH-R35	6	12	X					No	VT-3	Yes	
RHRH-R36	6	8		PSA-3			5"	No	VT-3,4	Yes	5/8" - 4 3/4"
47A432-1-1A	6	12	X					No	VT-3	Yes	
47A432-1-1B	6	12	X					No	VT-3	Yes	
SIH-363	7	12	X					No	VT-3	Yes	

TABLE H (CONTINUED)
COMPONENTS SUBJECT TO EXAMINATION CATEGORY

WBNP
 TI-50A
 Appendix A
 Page 288 of 362
 Revision 16

ASME CLASS 2 SUPPORTS

System Dwg. No. Table
 RHR ISI-0020-C IWC

326

Support No.	Sheet No.	Support Type					Integrally-Welded Attachment Size	Exam Required	Bolting	Acceptance Range	
		Pipe Size	Restraint	Snubber	Spring	Anchor					Stroke
SIH-371	7	8		PSA-3			5"	No	VT-3,4	Yes	1 11/16" - 4 3/4"
SIH-372	7	8	X					No	VT-3	Yes	
SIH-373	7	8	X					No	VT-3	Yes	
SIH-374	7	8	X					No	VT-3	Yes	
SIH-375	7	8	X					No	VT-3	Yes	
SIH-376	7	8	X					No	VT-3	Yes	
SIH-377	7	8	X					No	VT-3	Yes	
SIH-378	7	8	X					No	VT-3	Yes	
SIH-379	7	8	X					No	VT-3	Yes	
SIH-347	8	8	X					No	VT-3	Yes	
SIH-349	8	8			BP-3100F		1 3/16		No	VT-3	Yes 5/8" - 15/16"
SIH-350	8	8	X					No	VT-3	Yes	
SIH-351	8	8	X					No	VT-3	Yes	
SIH-352	8	8	X					No	VT-3	Yes	
47A432-3-3	8	8		PSA-1/2			2 1/2	No	VT-3,4	Yes	3/4" - 2 1/4"

TABLE H (CONTINUED)

COMPONENTS SUBJECT TO EXAMINATION CATEGORY

ASME CLASS 2 SUPPORTS

WBNP
 TI-50A
 Appendix A
 Page 290 of 362
 Revision 16

System		Dwg. No.	Table		Support Type					Integrally-Welded Attachment Size	Exam Required	Bolting	Acceptance Range
Support No.	Sheet No.	Pipe Size	Restraint	Snubber	Spring	Anchor	Stroke						
SIS		ISI-0021-C	IWC										
RHRH-V121	1	8			BP-VS2F		2 3/8	No		VT-3	Yes	1/4" - 2 3/8"	
RHRH-R122	1	8	X					No		VT-3	Yes		
RHRH-R123	1	8	X					No		VT-3	Yes		
RHRH-R124	1	8	X					No		VT-3	Yes		
RHRH-R134	1	8	X					No		VT-3	No		
RHRH-R211	2	8	X					No		VT-3	Yes		
RHRH-R212	2	8	X					No		VT-3	Yes		
RHRH-R213	2	8	X					Yes - 1/2"		VT-3	Yes		
RHRH-R214	2	8	X					No		VT-3	Yes		
RHRH-R215	2	8	X					No		VT-3	Yes		
RHRH-R216	2	8		PSA-1/2"			2 1/2	No		VT-3,4	Yes	9/32" - 1 3/4"	
RHRH-R217	2	8	X					No		VT-3	Yes		
RHRH-R218	2	8	X					No		VT-3	No		
RHRH-R219	2	8	X					No		VT-3	Yes		
RHRH-R220	2	8	X					No		VT-3	Yes		
SIH-R129	1	16	X					No		VT-3	Yes		
SIH-R130	1	16	X					No		VT-3,4	Yes		
SIH-R131	1	16	X					No		VT-3,4	Yes		

TABLE H (CONTINUED)

COMPONENTS SUBJECT TO EXAMINATION CATEGORY

ASME CLASS 2 SUPPORTS

WBNP
 TI-50A
 Appendix A
 Page 292 of 362
 Revision 16

System Dwg. No. Table
 SIS ISI-0021-C IWC

330

Support No.	Sheet No.	Support Type						Integrally-Welded Attachment Size	Exam Required	Bolting	Acceptance Range
		Pipe Size	Restraint	Snubber	Spring	Anchor	Stroke				
SIH-044	3	8	X					No	VT-3	Yes	
SIH-045	3	8	X					No	VT-3	Yes	
SIH-046	3	8	X					No	VT-3	Yes	
SIH-047	3	8	X					Yes 3/4"	VT-3	Yes	
SIH-048	3	8	X					No	VT-3	Yes	
SIH-049	3	8	X					Yes - 3/4"	VT-3	Yes	
SIH-050	3	8	X					No	VT-3	Yes	
SIH-077	3	6	X					No	VT-3	Yes	
SIH-078	3	6		PSA-3			5"	No	VT-3,4	Yes	1/4" - 3 7/16"
SIH-079	3	6		PSA-3			5"	No	VT-3,4	Yes	5/16" - 4 11/16"
SIH-063	3	6			BP-VS2B		2 3/8	No	VT-3	Yes	3/4" - 2 1/8"
SIH-064	3	6		PSA-3			5"	No	VT-3,4	Yes	1/4" - 4 1/8"
47A435-1-12	5	8	X					No	VT-3	Yes	
RHRH-R221	5	8	X					No	VT-3	Yes	
RHRH-R222	5	8	X					No	VT-3	Yes	

TABLE H (CONTINUED)

COMPONENTS SUBJECT TO EXAMINATION CATEGORY

ASME CLASS 2 SUPPORTS

WBNP
 TI-50A
 Appendix A
 Page 293 of 362
 Revision 16

System Dwg. No. Table
 SIS ISI-0021-C IWC

331

Support No.	Sheet No.	Support Type						Integrally-Welded Attachment Size	Exam Required	Bolting	Acceptance Range
		Pipe Size	Restraint	Snubber	Spring	Anchor	Stroke				
RHRH-R223	5	8	X					No	VT-3	Yes	
RHRH-R224	5	8	X					No	VT-3	Yes	
RHRH-R225	5	8	X					No	VT-3	Yes	
RHRH-R226	5	8	X					No	VT-3	Yes	
RHRH-R227	5	8	X					No	VT-3	Yes	
RHRH-R228	5	8	X					No	VT-3	Yes	
RHRH-R230	5	8		PSA-1			4"	No	VT-3,4	Yes	1/4" - 3 9/16"
RHRH-R231	5	8	X					No	VT-3	Yes	
RHRH-R232	5	8		PSA-1			4"	No	VT-3,4	Yes	5/8" - 3 3/4"
RHRH-R233	5	8	X					No	VT-3	Yes	
SIH-13	6	6				BP-VS4B	4 3/4	No	VT-3	Yes	15/16" - 4 1/2"
SIH-14	6	6		PSA-3			5"	No	VT-3,4	Yes	1 1/8" - 4 3/4"
SIH-15	6	6	X					No	VT-3	Yes	
SIH-16	6	6				BP-CSH	2 1/2	No	VT-3	Yes	1 7/16" - 2 1/4"
SIH-17	6	6		PSA-3			5"	No	VT-3,4	Yes	1/2" - 4 3/4"

TABLE H (CONTINUED)
COMPONENTS SUBJECT TO EXAMINATION CATEGORY
 ASME CLASS 2 SUPPORTS

WBNP
 TI-50A
 Appendix A
 Page 294 of 362
 Revision 16

System Dwg. No. Table
 SIS ISI-0021-C IWC

Support No.	Sheet No.	Support Type					Integrally-Welded Attachment Size	Exam Required	Bolting	Acceptance Range	
		Pipe Size	Restraint	Snubber	Spring	Anchor					Stroke
SIH-18	6	6		PSA-3			5"	No	VT-3,4	Yes	1 5/16" - 4 3/4"
SIH-19	6	6		PSA-3			5"	No	VT-3,4	Yes	3 3/8" - 4 3/4"
SIH-20	6	6				BP-VS4F	4 3/4	No	VT-3	Yes	1 11/16" - 4 1/2"
SIH-21	6	6		PSA-3			5"	No	VT-3,4	Yes	1/4" - 2 3/4"
SIH-22	6	6		PSA-3			5"	No	VT-3,4	Yes	4 3/16" - 4 3/4"
SIH-23	6	6		PSA-3			5"	No	VT-3,4	Yes	1/4" - 4 1/4"
SIH-24	6	6		PSA-3			5"	No	VT-3,4	Yes	1 7/16" - 4 3/4"
SIH-25	6	6	X					No	VT-3	Yes	
SIH-26	6	8				BP-VS4B	4 3/4	No	VT-3	Yes	1" - 4 1/2"
SIH-27	6	8	X					No	VT-3	Yes	
SIH-28	6	8				BP-VS4C	4 3/4	No	VT-3	Yes	1 1/8" - 4 1/2"
SIH-29	6	8		PSA-1			4"	No	VT-3,4	Yes	1/4" - 3"
SIH-30	6	8		PSA-3			5"	No	VT-3,4	Yes	1/4" - 4 3/8"
SIH-31	6	8		PSA-3			5"	No	VT-3,4	Yes	1 1/8" - 3 7/8"
SIH-32	6	8		PSA-3			5"	No	VT-3,4	Yes	3/8" - 3 7/16"
SIH-33	6	8	X					No	VT-3	Yes	

332

TABLE H (CONTINUED)

COMPONENTS SUBJECT TO EXAMINATION CATEGORY

ASME CLASS 2 SUPPORTS

WBNP
 TI-50A
 Appendix A
 Page 299 of 362
 Revision 16

System		Dwg. No.	Table							Integrally- Welded Attachment Size	Exam Required	Bolting	Acceptance Range
Support No.	Sheet No.	Pipe Size	Restraint	Snubber	Spring	Anchor	Stroke	Support Type					
FW		ISI-0062-C	IWC										
FWH-365	5	6	X							No	VT-3	Yes	
FWH-366	5	6	X							No	VT-3	Yes	
FWH-367	5	6	X							No	VT-3	Yes	
FWH-368	5	6	X							No	VT-3	Yes	
337 FWH-369	5	6		PSA-3			5"			No	VT-3	Yes	1 1/2" - 4 3/4"
FWH-370	5	6		PSA-3			5"			No	VT-3,4	Yes	1 3/8" - 4 3/4"
FWH-371	5	6	X							No	VT-3,4	Yes	
FWH-372	5	6	X							No	VT-3	Yes	
FWH-373	5	6		PSA-10			6"			No	VT-3,4	Yes	1/4" - 4 3/4"
FWH-374	5	6		PSA-1			4"			No	VT-3,4	Yes	1/4" - 2 15/16"
FWH-377	5	6		PSA-1	BP-VS2B-13		4" 2 1/4"			No	VT-3,4	Yes	1/4" - 3 5/16" 1/4" - 1 9/16"
FWH-378	5	6			BP-VS4B		4 3/4"			No	VT-3,4	Yes	1 3/8" - 4 1/2"
FWH-379	5	6	X							No	VT-3	Yes	
FWH-380	5	6	X							No	VT-3	Yes	
FWH-381	5	6	X							No	VT-3	Yes	

TABLE H (CONTINUED)

COMPONENTS SUBJECT TO EXAMINATION CATEGORY

ASME CLASS 2 SUPPORTS

WBNP
 TI-50A
 Appendix A
 Page 300 of 362
 Revision 16

System Dwg. No. Table
 FW ISI-0062-C IWC

Support No.	Sheet No.	Pipe Size	Support Type					Integrally-Welded Attachment Size	Exam Required	Bolting	Acceptance Range	
			Restraint	Snubber	Spring	Anchor	Stroke					
FWH-382	5	6	X					No	VT-3	Yes		
FWH-480	8	6		PSA-3				5"	No	VT-3,4	Yes	1 1/2" - 4 3/4"
FWH-481	8	6			BP-VS4B			4 3/4	No	VT-3,4	Yes	1 1/4" - 4 1/2"
FWH-482	8	6	X					No	VT-3	Yes		
FWH-483	8	6		PSA-10				6"	No	VT-3,4	Yes	1 1/2" - 5 3/4"
FWH-484	8	6	X					No	VT-3	Yes		
FWH-485	8	6		PSA-3				5"	No	VT-3,4	Yes	7/8" - 4 9/16"
FWH-486	8	6	X					No	VT-3	Yes		
FWH-487	8	6		PSA-3(2)				5"	No	VT-3,4	Yes	3/8" - 4 3/4"
FWH-488	8	6	X					No	VT-3	Yes		
FWH-489	8	6	X					No	VT-3	Yes		
FWH-490	8	6	X					No	VT-3	No		
FWH-491	8	6	X					No	VT-3	Yes		
FWH-492	8	6	X					No	VT-3	Yes		
FWH-493	8	6	X					No	VT-3	Yes		

338

TABLE H (CONTINUED)

COMPONENTS SUBJECT TO EXAMINATION CATEGORY

ASME CLASS 2 SUPPORTS

WBNP
 TI-50A
 Appendix A
 Page 301 of 362
 Revision 16

<u>System</u>		<u>Dwg. No.</u>		<u>Table</u>								
FW		ISI-0062-C		IWC								
Support No.	Sheet No.	<u>Support Type</u>					Integrally-Welded Attachment Size	Exam Required	Bolting	Acceptance Range		
		Pipe Size	Restraint	Snubber	Spring	Anchor					Stroke	
FWH-494	8	6		PSA-3			5"	No	VT-3,4	Yes	1/4" - 4 1/16"	
FWH-495	8	6	X					No	VT-3	Yes		
FWH-496	8	6	X					No	VT-3	Yes		
FWH-497	8	6		PSA-3			5"	No	VT-3,4	Yes	1/4" - 4 11/16"	
FWH-498	8	6	X					No	VT-3	Yes		
FWH-499	8	6	X					No	VT-3	Yes		
FWH-500	8	6	X					No	VT-3	Yes		
FWH-502	8	6	X					No	VT-3	Yes		
FWH-503	8	6	X					No	VT-3	Yes		
FWH-504	8	6	X					No	VT-3	Yes		
FWH-407	6	6	X					No	VT-3	Yes		
FWH-408	6	6			BP-VS6B		7 1/8	No	VT-3,4	Yes	1 1/8" - 6 7/8"	
FWH-409	6	6		PSA-3			5"	No	VT-3,4	Yes	1 3/8" - 4 3/4"	
FWH-410	6	6	X					No	VT-3,4	Yes		
FWH-411	6	6		PSA-3			5"	No	VT-3	Yes	1 1/4" - 4 3/4"	

TABLE H (CONTINUED)

COMPONENTS SUBJECT TO EXAMINATION CATEGORY

ASME CLASS 2 SUPPORTS

WBNP
TI-50A
Appendix A
Page 303 of 362
Revision 16

System Dwg. No. Table
FW ISI-0062-C IWC

341

Support No.	Sheet No.	Pipe Size	Support Type				Integrally-Welded Attachment Size	Exam Required	Bolting	Acceptance Range	
			Restraint	Snubber	Spring	Anchor					Stroke
FWH-406	6	6	X				No	VT-3	Yes		
47A401-8-2	7	6		PSA-3			5"	No	VT-3,4	Yes	1/4" - 3 1/4"
47A427-6-1	6	6		PSA-3			5"	No	VT-3,4	Yes	1/4" - 3 5/8"
FWH-446	7	6	X					No	VT-3	Yes	
FWH-447	7	6			BP-3400		4 3/4	No	VT-3,4	Yes	1 3/16" - 4 1/2"
FWH-449	7	6		PSA-3			5"	No	VT-3,4	Yes	1/4" - 4 1/4"
FWH-450	7	6		PSA-3			5"	No	VT-3,4	Yes	1 1/2" - 4 3/4"
FWH-452	7	6	X					No	VT-3	Yes	
FWH-453	7	6		PSA-3(2)			5"	No	VT-3,4	Yes	1/4" - 4 1/4"
FWH-454	7	6	X					No	VT-3	Yes	
FWH-455	7	6		PSA-10			6"	No	VT-3,4	Yes	1 1/8" - 5 3/4"
FWH-456	7	6	X					No	VT-3	Yes	
FWH-457	7	6	X					No	VT-3	Yes	
FWH-458	7	6	X					No	VT-3	Yes	

DATA SHEET 1 (Cont'd)

EXAMINATION SECTION NDE INSPECTION SECTION REPRESENTATIVE DATE

Class 1 Components (Continued)
Piping

- 6.4.1
- 6.4.2
- 6.4.3
- 6.4.4
- 6.4.5
- 6.4.7

RCP

- 6.5.1
- 6.5.2
- 6.5.4
- 6.5.5
- 6.5.6

Valves

- 6.6.2
- 6.6.6

Class 2 Components
Steam Generators

- 7.1.1
- 7.1.2

RHRHX

- 7.2.1
- 7.2.2
- 7.2.3

RHX

- 7.3.1
- 7.3.3

LHX

- 7.4.1
- 7.4.3

REQUEST FOR RELIEF ISI-4 (Continued)

Weld Number ¹	Code Category ²	Drawing Number	Physical Configuration ³	Scan ⁴ /Limitation ⁵	Remarks ⁶
MSS-61A-LS	CG	CHM-2669-C 4 of 4	P	All/Limited by 10%	Limited examinations due to pipe support
MSS-61B-LS	CG	CHM-2669-C 4 of 4	P	All/Limited by 10%	Limited examinations due to pipe support
MSF-D006-10 (R-501L)	CG	CHM-2669 4 of 4	P/V	15/Limited	Limited examination due to component geometry
RCS-106	B-J	ISI-0017-C 6 of 11	F/P	3/No scan 4/7:00 to 11:00	No examination due to component geometry. Limited due to permanent pipe restraint. (Note 8)
RHRF-D055-10	C-F	CHM-2636-C 8 of 8	E/V	3/9:00 4/No scan	No examination due to component geometry. Limited due to gamma plug.
SIF-D088-9	CF	CHM-2758-C 6 of 14	E/P	All/6:00	Limited examination due to thermocouple.
RCF-B4-4	B-J	CHM-2758-C 13 of 13	Branch Connection Boss/P	No Scan	No examination due to boss and pipe configuration (Note 8)

417