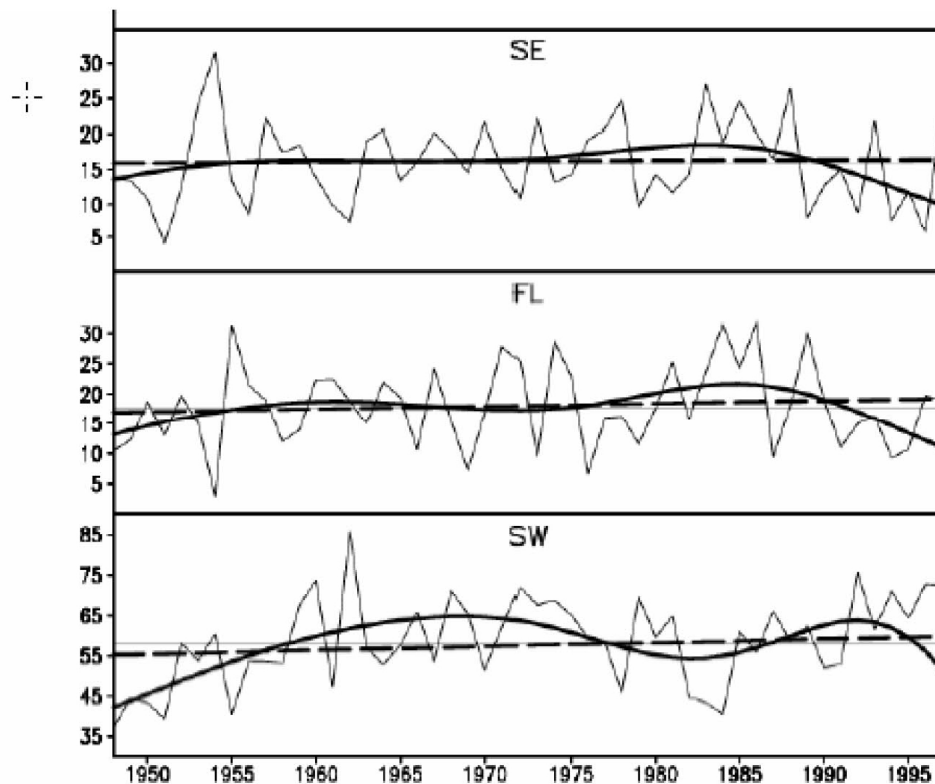


Air Stagnation Trend (Positive)



Note: Annual accumulation of air stagnation days for the noted region with a positive trend. Light solid curve is for the yearly accumulation, smoothed heavy solid curve is for low-frequency component, and heavy dashed line for the trend.

Reference: Air Stagnation Climatology for the United States (1948-1998), NOAA/Air Resources Laboratory ATLAS No. 1, Julian X.L. Wang and James K. Angell, April 1999.

WILLIAM STATES LEE III
NUCLEAR STATION UNITS 1 & 2

Air Stagnation Trend

FIGURE 2.7-2

Rev 0