

- T-406 A**
WASTE WATER TANK
14'-0" DIA. X 18' HT.
20,700 GAL.
FRP V/ GEL COAT
- T-406 B**
WASTE WATER TANK
14'-0" DIA. X 18' HT.
20,700 GAL.
FRP V/ GEL COAT
- P-406 A&B**
TRANSFER PUMPS
150 GPM @ 130 PSI
316 S.S.
40 HP, 460 V, 3 PH, TEFC
- F-406 A&B**
WASTE WATER BAG FILTERS
150 PSIG, M.D.P.
316 S.S.
150 GPM, 5 MICRON
- F-406 C&D**
FILTERS
150 PSIG, M.D.P.
316 S.S.
150 GPM, 1 MICRON
- P-450**
DISPOSAL WELL PUMP
2000 PSI, 150 GPM
150 HP, 1160 RPM
460 V, 3 PH, TEFC
PLUGE PUMP
HP200AC RH
QUINTA FLEX
- P-455**
METERING PUMP
CORROSION / SCALE
CHEMICAL PUMP
0 / 1000 ML / HP
110 V

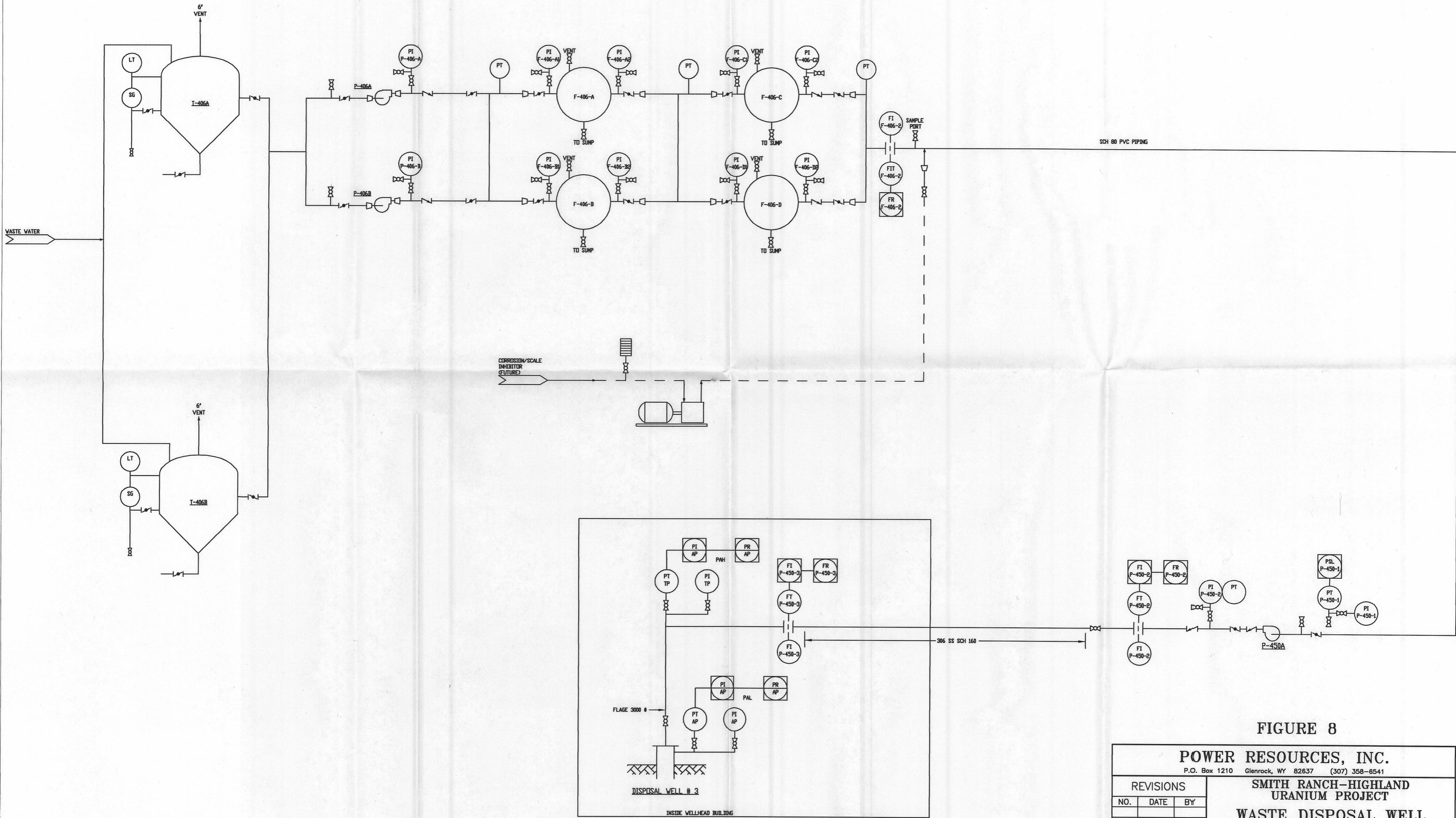


FIGURE 8

POWER RESOURCES, INC.
P.O. Box 1210 Glenrock, WY 82637 (307) 358-6541

REVISIONS		
NO.	DATE	BY

SMITH RANCH-HIGHLAND URANIUM PROJECT

WASTE DISPOSAL WELL INJECTION SYSTEM

P&ID

GEO. BY: _____	DATE: _____	SCALE: _____	SHT. NO. _____
ENG. BY: SMH	DATE: 1-17-2007	FILE: _____	
DRAFT. BY: _____	DATE: _____		