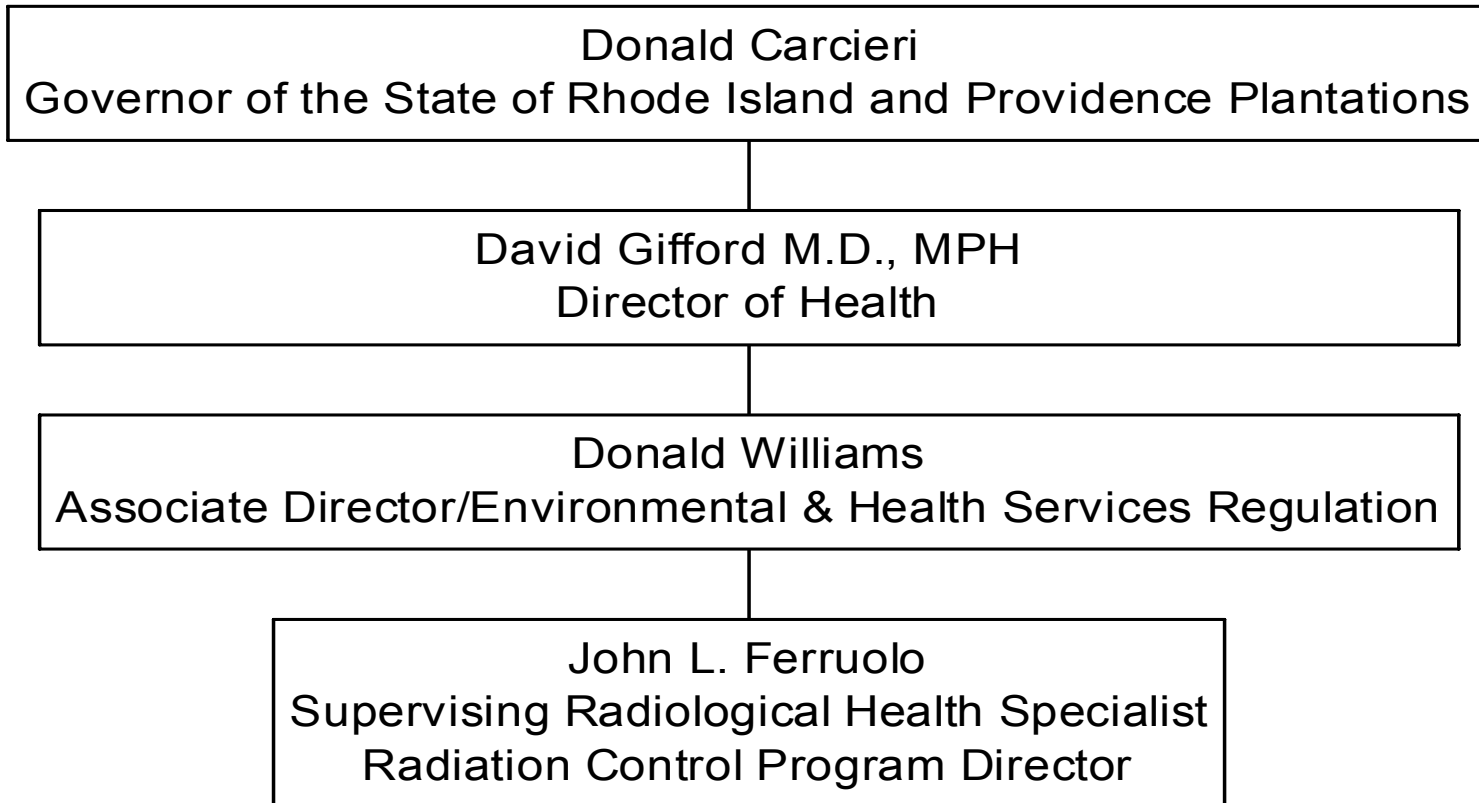
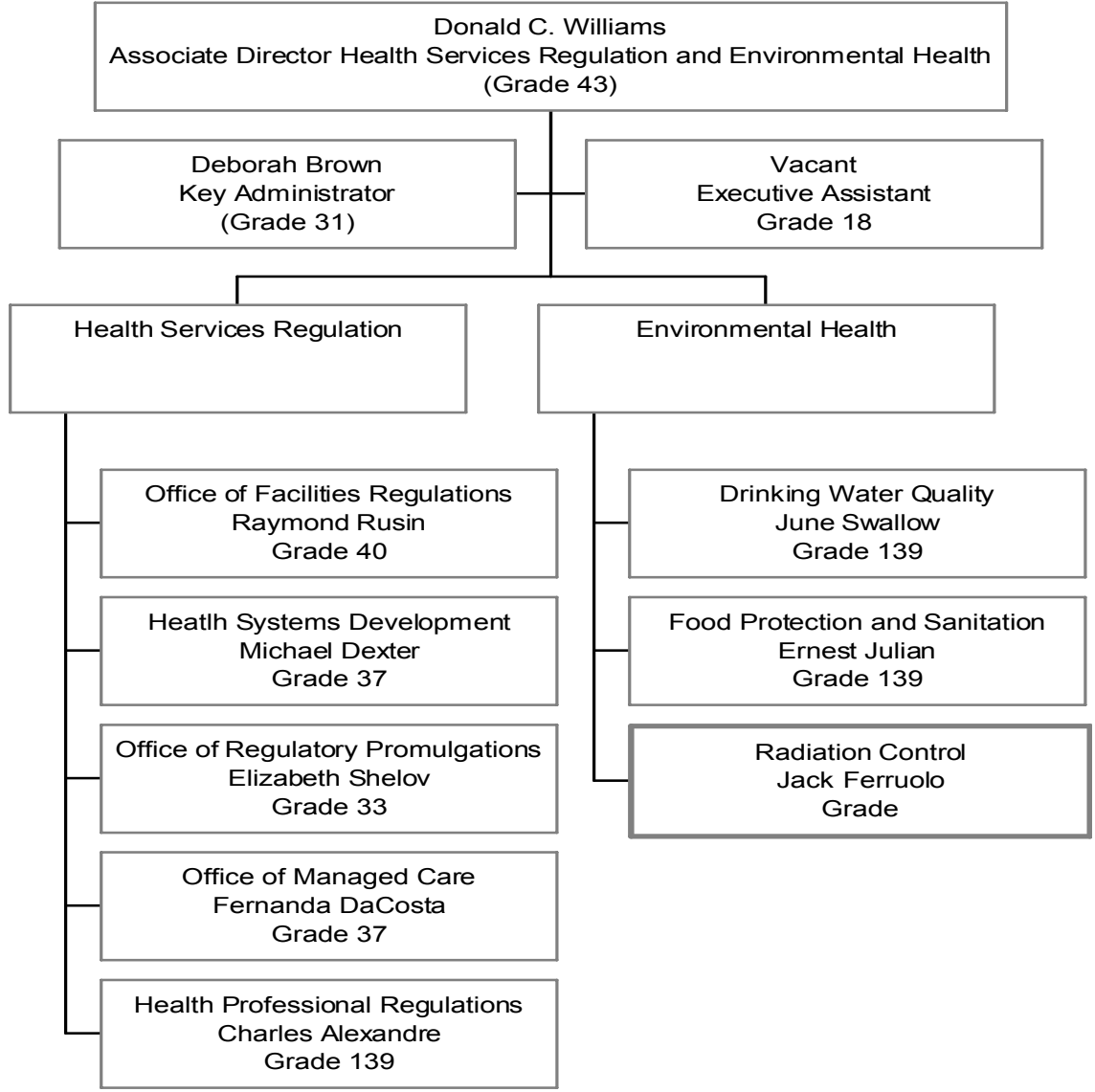


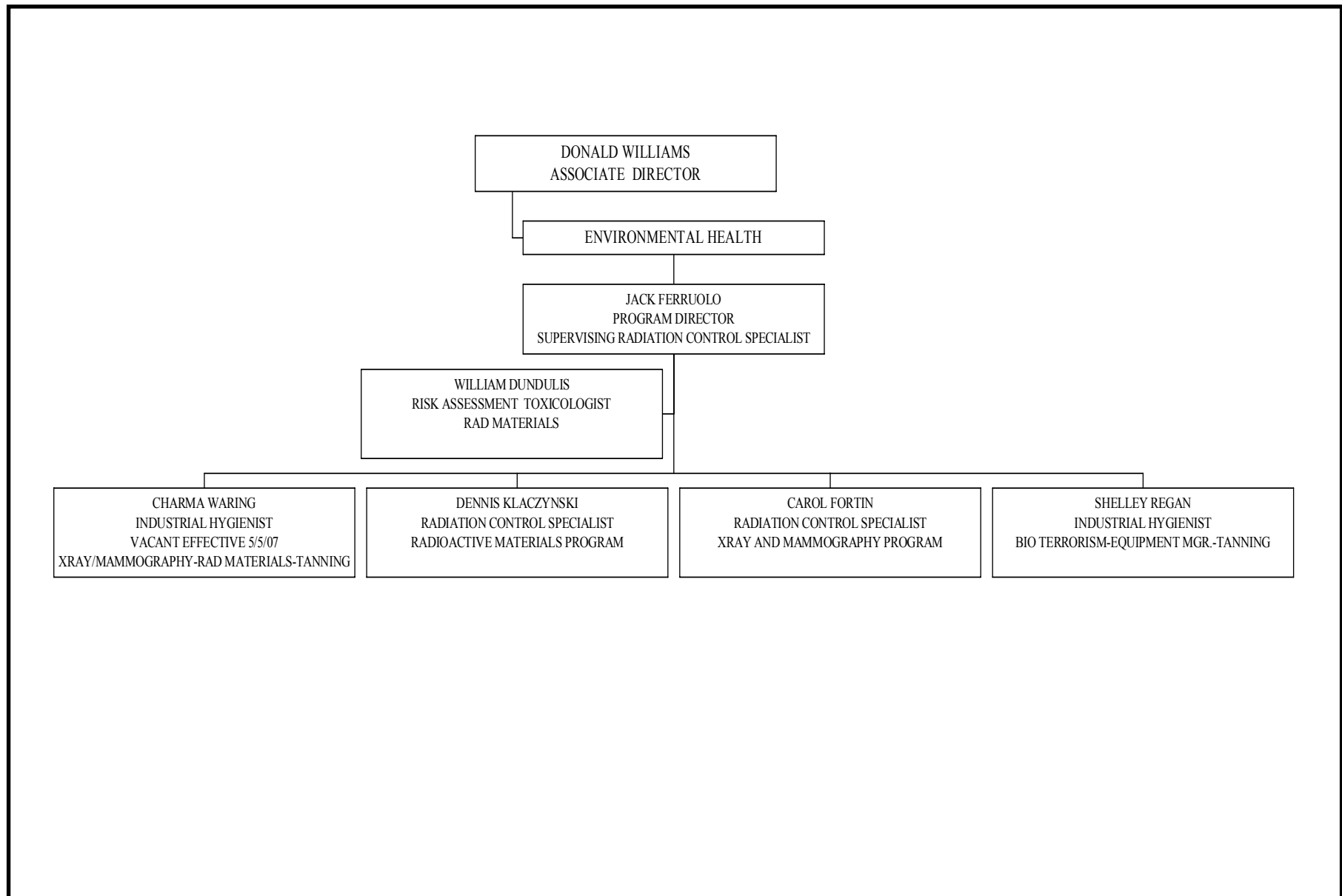
**ORG CHART 1
STATE HIERARCHY**



**ORG CHART -2
HEALTH SERVICES REGULATION
AND ENVIRONMENTAL HEALTH
MANAGEMENT**



ORG CHART 3-RADIATION CONTROL PROGRAM



**APPENDIX 1A
CONDUCTED OVERDUE ROUTINE INSPECTIONS - 2002**

LICENSE #	LICENSEE	NRC LICENSE TYPE	INSP FREQ*	Insp Done	Insp Due	Insp Done	Mo Overdue	Insp Findings Date
PRIORITY 1								
3D-065-01	THIELSCH ENGINEERING, INC.	03320 Indust. Radiography Temp Jobsite	1	2-Apr-1998	2-Apr-1999	24-Jun-2003	51	18-Jul-2003
3D-117-01	OCEAN STATE TECHNICAL SERVICES	03320 Indust. Radiography Temp Jobsite	1	18-Jan-2000	18-Jan-2001	15-Jan-2003	24	15-Jan-2003
3D-005-01	ELECTRIC BOAT CORPORATION	03320 Indust. Radiography Temp Jobsite	1	22-May-1997	22-May-1998	29-Sep-2003	65	20-Oct-2003
3D-083-02	PK ASSOCIATES dba BRIGGS ENGINEERING & TESTING	03320 Indust. Radiography Temp Jobsite	1	23-Dec-1997	23-Dec-1998	24-Jun-2003	55	12-Mar-2003
3D-064-01	ANVIL (SUPPLY SALES CO.)	03320 Indust. Radiography Temp Jobsite	1	26-Aug-1997	26-Aug-1997	28-Mar-2003	68	16-May-2003
7D-051-01	RHODE ISLAND HOSPITAL	02110 Med. Institution Broad	1	23-Jun-1998	23-Jun-1999	15-Apr-2003	46	16-Jun-2003
7D-045-02	WOMEN & INFANTS HOSPITAL OF RHODE ISLAND	02110 Med. Institution Broad	1	5-May-1999	5-May-2000	4-Aug-2003	40	7-Oct-2003
7D-026-01	ROGER WILLIAMS HOSPITAL	02110 Med. Institution Broad	1	15-Sep-1998	15-Sep-1999	29-Jan-2004	53	24-Mar-2004
3B-114-01	CARDINAL HEALTH-SYNCOR INTERNATIONAL CORP	02500 Nuclear Pharmacies	1	1-Jul-1998	1-Jul-1999	7-Oct-2002	40	7-Oct-2002

**APPENDIX 1A
CONDUCTED OVERDUE ROUTINE INSPECTIONS - 2002**

LICENSE #	LICENSEE	NRC LICENSE TYPE	INSP FREQ*	Insp Done	Insp Due	Insp Done	Mo Overdue	Insp Findings Date
PRIORITY 2								
3K-063-01	RI ATOMIC ENERGY COM (NUCLEAR SCIENCE CENTER)	01100 Academic Type A Broad	2	30-Jan-1998	30-Jan-2000	13-Nov-2003	46	7-Jan-2004
PRIORITY 3								
7B-035-01	WESTERLY HOSPITAL, THE	02120 Med. Institution - WD Req.	3	1-Dec-1998	1-Nov-2001	22-Aug-2003	22	22-Aug-2003
3K-040-01	UNIV. OF RHODE ISLAND	01100 Academic Type A Broad	3	4-Feb-1998	4-Feb-2001	13-Nov-2003	34	7-Jan-2004
7B-025-01	ST. JOSEPH HOSPITAL	02120 Med. Institution - WD Req.	3	19-Mar-1999	19-Mar-2002	3-Jun-2004	27	21-Jun-2004
7B-012-01	SOUTH COUNTY HOSPITAL	02120 Med. Institution - WD Req.	3	4-Jun-1999	4-Jun-2002	5-Aug-2004	26	5-Aug-2004
7B-016-01	NEWPORT HOSPITAL	02120 Med. Institution - WD Req.	3	19-Mar-1999	19-Mar-2002	22-Sep-2004	31	24-Sep-2004
7B-020-01	KENT COUNTY MEMORIAL HOSPITAL	02120 Med. Institution - WD Req.	3	31-Jul-1996	31-Jul-1999	27-Jun-2003	48	12-Aug-2003
7B-019-01	LANDMARK MEDICAL CENTER	02120 Med. Institution - WD Req.	3	13-Apr-1998	13-Apr-2001	7-Aug-2003	28	14-Aug-2003
3K-036-01	BROWN UNIVERSITY	01100 Academic Type A Broad	3	27-Jan-1999	27-Jan-2002	27-Oct-2003	21	27-Oct-2003
TOTAL OD/02=18								

**APPENDIX 1B
CONDUCTED OVERDUE ROUTINE INSPECTIONS - 2003**

LICENSE #	LICENSEE	NRC LICENSE TYPE	INSP FREQ*	Insp Done	Insp Due	Insp Done	Mo Overdue	Insp Findings Date
PRIORITY 1								
3D-065-01	THIELSCH ENGINEERING, INC.	03320 Indust. Radiography Temp Jobsite	1	2-Apr-1998	2-Apr-1999	24-Jun-2003	51	18-Jul-2003
3D-117-01	OCEAN STATE TECHNICAL SERVICES	03320 Indust. Radiography Temp Jobsite	1	18-Jan-2000	18-Jan-2001	15-Jan-2003	24	15-Jan-2003
3D-005-01	ELECTRIC BOAT CORPORATION	03320 Indust. Radiography Temp Jobsite	1	22-May-1997	22-May-1998	29-Sep-2003	65	20-Oct-2003
3D-083-02	PK ASSOCIATES dba BRIGGS ENGINEERING & TESTING	03320 Indust. Radiography Temp Jobsite	1	23-Dec-1997	23-Dec-1998	24-Jun-2003	55	12-Mar-2003
3D-064-01	ANVIL (SUPPLY SALES CO.)	03320 Indust. Radiography Temp Jobsite	1	26-Aug-1997	26-Aug-1997	28-Mar-2003	68	16-May-2003
3D-095-01	OCEAN STATE TESTING, INC.	03320 Indust. Radiography Temp Jobsite	1	19-Jul-2002	19-Jul-2003	16-Jul-2004	12	16-Jul-2004
7D-051-01	RHODE ISLAND HOSPITAL	02110 Med. Institution Broad	1	23-Jun-1998	23-Jun-1999	15-Apr-2003	46	13-Jun-2003
7D-045-02	WOMEN & INFANTS HOSPITAL OF RHODE ISLAND	02110 Med. Institution Broad	1	5-May-1999	5-May-2000	4-Aug-2003	40	7-Oct-2003
7D-026-01	ROGER WILLIAMS HOSPITAL	02110 Med. Institution Broad	1	15-Sep-1998	15-Sep-1999	29-Jan-2004	53	24-Mar-2004

**APPENDIX 1B
CONDUCTED OVERDUE ROUTINE INSPECTIONS - 2003**

LICENSE #	LICENSEE	NRC LICENSE TYPE	INSP FREQ*	INSP DONE	Insp Due	Insp Done	Mo Overdue	Insp Findings Date
PRIORITY 2								
3K-040-01	UNIV. OF RHODE ISLAND	01100 Academic Type A Broad	2	4-Feb-1998	4-Feb-2000	13-Nov-2003	46	7-Jan-2004
3K-063-01	RI ATOMIC ENERGY COM (NUCLEAR SCIENCE CENTER)	01100 Academic Type A Broad	2	30-Jan-1998	30-Jan-2000	IN	#VALUE!	7-Jan-2004
3K-036-01	BROWN UNIVERSITY	01100 Academic Type A Broad	2	27-Jan-1999	27-Jan-2001	27-Oct-2003	33	27-Oct-2003
PRIORITY 3								
7B-043-01	MEMORIAL HOSPITAL OF RHODE ISLAND	02120 Med. Institution - WD Req.	3	11-Jan-2000	11-Jan-2003	21-Apr-2004	16	17-May-2004
7B-035-01	WESTERLY HOSPITAL, THE	02120 Med. Institution - WD Req.	3	1-Dec-1998	1-Nov-2001	22-Aug-2003	22	22-Aug-2003
7B-025-01	ST. JOSEPH HOSPITAL	02120 Med. Institution - WD Req.	3	19-Mar-1999	19-Mar-2002	3-Jun-2004	27	21-Jun-2004
7B-012-01	SOUTH COUNTY HOSPITAL	02120 Med. Institution - WD Req.	3	4-Jun-1999	4-Jun-2002	5-Aug-2004	26	5-Aug-2004
7B-016-01	NEWPORT HOSPITAL	02120 Med. Institution - WD Req.	3	19-Mar-1999	19-Mar-2002	22-Sep-2004	31	24-Sep-2004
7B-020-01	KENT COUNTY MEMORIAL HOSPITAL	02120 Med. Institution - WD Req.	3	31-Jul-1996	31-Jul-1999	27-Jun-2003	48	12-Aug-2003
7B-019-01	LANDMARK MEDICAL CENTER	02120 Med. Institution - WD Req.	3	13-Apr-1998	13-Apr-2001	7-Aug-2003	28	14-Aug-2003
TOTAL OD/03=20								

**APPENDIX 1C
CONDUCTED OVERDUE ROUTINE INSPECTIONS - 2004**

LICENSE #	LICENSEE	NRC LICENSE TYPE	INSP FREQ*	Insp Done	Insp Due	Insp Done	Mo Overdue	Insp Findings Date
PRIORITY 1								
3D-065-01	THIELSCH ENGINEERING, INC.	03320 Indust. Radiography Temp Jobsite	1	24-Jun-2003	24-Jun-2004	13-May-2005	11	13-May-2005
3D-117-01	OCEAN STATE TECHNICAL SERVICES	03320 Indust. Radiography Temp Jobsite	1	15-Jan-2003	15-Jan-2004	30-Mar-2005	15	30-Mar-2005
3D-005-01	ELECTRIC BOAT CORPORATION	03320 Indust. Radiography Temp Jobsite	1	29-Sep-2003	29-Sep-2004	28-Sep-2005	12	28-Sep-2005
3D-064-01	ANVIL (SUPPLY SALES CO.)	03320 Indust. Radiography Temp Jobsite	1	28-Mar-2003	28-Mar-2004	13-Apr-2005	13	13-Apr-2005
3D-095-01	OCEAN STATE TESTING, INC.	03320 Indust. Radiography Temp Jobsite	1	19-Jul-2002	19-Jul-2003	16-Jul-2004	12	16-Jul-2004
7D-026-01	ROGER WILLIAMS HOSPITAL	02110 Med. Institution Broad	1	15-Sep-1998	15-Sep-1999	29-Jan-2004	53	24-Mar-2004
PRIORITY 2								
7B-053-02	RADIATION ONCOLOGY SERVICES-PHILIP G. MADDOCK, MD	02230 High-Med-Pulsed Dose Afterload	2	22-Oct-2002	22-Oct-2004	15-Feb-2005	4	13-Apr-2005
7B-038-03	N. MAIN-RADIATION ONCOLOGY ASSOCIATES	02230 High-Med-Pulsed Dose Afterload	2	new 9/1/03	1-Mar-2004	27-May-2004	3	10-Aug-2004
PRIORITY 3								
7B-025-01	ST. JOSEPH HOSPITAL	02120 Med. Institution - WD Req.	3	19-Mar-1999	19-Mar-2002	3-Jun-2004	27	21-Jun-2004
7B-012-01	SOUTH COUNTY HOSPITAL	02120 Med. Institution - WD Req.	3	4-Jun-1999	4-Jun-2002	5-Aug-2004	26	5-Aug-2004
7B-016-01	NEWPORT HOSPITAL	02120 Med. Institution - WD Req.	3	19-Mar-1999	19-Mar-2002	22-Sep-2004	31	24-Sep-2004
7B-043-01	MEMORIAL HOSPITAL OF RHODE ISLAND	02120 Med. Institution - WD Req.	3	11-Jan-2000	11-Jan-2003	21-Apr-2004	16	
7B-131-01	RI PET	02220 Mobile Nuclear Medicine Services	3	new 4/12/04	12-Oct-2004	31-Jan-2005	4	15-Mar-2005
TOTAL OD/04 13								

**APPENDIX 1D
CONDUCTED OVERDUE ROUTINE INSPECTIONS - 2005**

LICENSE #	LICENSEE	NRC LICENSE TYPE	INSP FREQ*	Insp Done	Insp Due	Insp Done	Mo Overdue
PRIORITY 1							
3D-065-01	THIELSCH ENGINEERING, INC.	03320 Indust. Radiography Temp Jobsite	1	24-Jun-2003	24-Jun-2004	13-May-2005	11
3D-117-01	OCEAN STATE TECHNICAL SERVICES	03320 Indust. Radiography Temp Jobsite	1	15-Jan-2003	15-Jan-2004	30-Mar-2005	15
3D-005-01	ELECTRIC BOAT CORPORATION	03320 Indust. Radiography Temp Jobsite	1	29-Sep-2003	29-Sep-2004	28-Sep-2005	12
3D-064-01	ANVIL (SUPPLY SALES CO.)	03320 Indust. Radiography Temp Jobsite	1	28-Mar-2003	28-Mar-2004	13-Apr-2005	13
PRIORITY 2							
7B-053-02	RADIATION ONCOLOGY SERVICES-PHILIP G. MADDOCK, MD	02230 High-Med-Pulsed Dose Afterload	2	22-Oct-2002	22-Oct-2004	15-Feb-2005	4
PRIORITY 3							
7B-131-01	RI PET	02220 Mobile Nuclear Medicine Services	3	new 4/12/04	12-Oct-2004	31-Jan-2005	4
TOTAL OD/05=6							

**APPENDIX 1D
CONDUCTED OVERDUE ROUTINE INSPECTIONS - 2005**

Insp Findings Date
13-May-2005
30-Mar-2005
28-Sep-2005
13-Apr-2005
13-Apr-2005
15-Mar-2005

**APPENDIX 1E
CONDUCTED OVERDUE ROUTINE INSPECTIONS - 2006**

LICENSE #	LICENSEE	NRC LICENSE TYPE	INSP FREQ*	Insp Done	Insp Due	Insp Done	Mo Overdue	Insp Findings Date
PRIORITY 1								
3D-065-01	THIELSCH ENGINEERING, INC.	03320 Indust. Radiography Temp Jobsite	1	13-Apr-2005	13-Apr-2006	18-Jan-2007	9	7-Mar-2007
3D-117-01	OCEAN STATE TECHNICAL SERVICES	03320 Indust. Radiography Temp Jobsite	1	30-Mar-2005	30-Mar-2006	20-Mar-2007	12	20-Mar-2007
3D-005-01	ELECTRIC BOAT CORPORATION	03320 Indust. Radiography Temp Jobsite	1	28-Sep-2005	28-Sep-2006	21-Mar-2007	6	21-Mar-2007
3D-083-02	PK ASSOCIATES dba BRIGGS ENGINEERING & TESTING	03320 Indust. Radiography Temp Jobsite	1	11-May-2005	11-May-2006	10-Apr-2007	11	10-Apr-2007
PRIORITY 2								
7B-038-03	N. MAIN-RADIATION ONCOLOGY ASSOCIATES	02230 High-Med-Pulsed Dose Afterload	2	27-May-2004	27-May-2006	12-Jun-2007	13	12-Jun-2007
PRIORITY 3								
7B-035-01	WESTERLY HOSPITAL, THE	02120 Med. Institution - WD Req.	3	22-Aug-2003	22-Sep-2006	21-Aug-2007	11	29-Aug-2007
3K-040-01	UNIV. OF RHODE ISLAND	01100 Academic Type A Broad	3	13-Nov-2003	13-Nov-2006	1-Nov-2007	12	NA-INSP PENDING
3K-036-01	BROWN UNIVERSITY	01100 Academic Type A Broad	3	27-Oct-2003	27-Oct-2006	9-May-2007	6	11-May-2007
TOTAL OD/06=8								

**APPENDIX 1F
CONDUCTED OVERDUE ROUTINE INSPECTIONS - 2007 [1 JANUARY - 7 SEPTEMBER]**

LICENSE #	LICENSEE	NRC LICENSE TYPE	INSP FREQ*	Insp Done	Insp Due	Insp Done	Mo Overdue	Insp Findings Date
PRIORITY 1								
3D-065-01	THIELSCH ENGINEERING, INC.	03320 Indust. Radiography Temp Jobsite	1	13-Apr-2005	13-Apr-2006	18-Jan-2007	9	7-Mar-2007
3D-117-01	OCEAN STATE TECHNICAL SERVICES	03320 Indust. Radiography Temp Jobsite	1	30-Mar-2005	30-Mar-2006	20-Mar-2007	12	20-Mar-2007
3D-005-01	ELECTRIC BOAT CORPORATION	03320 Indust. Radiography Temp Jobsite	1	28-Sep-2005	28-Sep-2006	21-Mar-2007	6	21-Mar-2007
3D-083-02	PK ASSOCIATES dba BRIGGS ENGINEERING & TESTING	03320 Indust. Radiography Temp Jobsite	1	11-May-2005	11-May-2006	10-Apr-2007	11	10-Apr-2007
PRIORITY 2								
7B-038-03	N. MAIN-RADIATION ONCOLOGY ASSOCIATES	02230 High-Med-Pulsed Dose Afterload	2	27-May-2004	27-May-2006	12-Jun-2007	13	12-Jun-2007
7B-053-02	RADIATION ONCOLOGY SERVICES-PHILIP G. MADDOCK, MD	02230 High-Med-Pulsed Dose Afterload	2	15-Feb-2005	15-Feb-2007	21-Jun-2007	4	21-Jun-2007
PRIORITY 3								
7B-035-01	WESTERLY HOSPITAL, THE	02120 Med. Institution - WD Req.	3	22-Sep-2003	22-Sep-2006	21-Aug-2007	11	29-Aug-2007
3K-036-01	BROWN UNIVERSITY	01100 Academic Type A Broad	3	27-Oct-2003	27-Oct-2006	9-May-2007	6	11-May-2007
7A-051-02***	RHODE ISLAND HOSPITAL	02310 Stereotactic Radiosurgery-	3	23-Jan-2004	23-Jan-2007	6-Aug-2007	7	6-Aug-2007
TOTAL OD/07=9								

**APPENDIX 2
OVERDUE INSPECTIONS AS OF 7 SEPTEMBER 2007**

LICENSE #	LICENSEE	NRC LICENSE TYPE	INSP FREQ*	Insp Done	Insp Due	Insp Done	Mo Overdue	Insp Findings Date
7B-125-01	CARDIOVASCULAR ASSOCIATES OF RHODE ISLAND	02201 Med. Private Prac. - no WD Req.	5	14-Jan-2002	14-Jan-2007		8	NA-INSP PENDING
3K-123-01	PROVIDENCE COLLEGE	03620 Research/Development Other	5	18-Apr-2002	18-Apr-2007		5	NA-INSP PENDING
3K-040-01	UNIV. OF RHODE ISLAND	01100 Academic Type A Broad	3	13-Nov-2003	13-Nov-2006		10	NA-INSP PENDING
7B-025-01	ST. JOSEPH HOSPITAL	02120 Med. Institution - WD Req.	3	3-Jun-2004	3-Jun-2007		3	NA-INSP PENDING
7B-043-01	MEMORIAL HOSPITAL OF RHODE ISLAND	02120 Med. Institution - WD Req.	3	21-Apr-2004	21-Apr-2007		5	NA-INSP PENDING
7B-137-01	RI CARDIOVASCULAR GR	02201 Med. Private Prac. - no WD Req.	5	NEW	2-Aug-2007		1	NA-INSP PENDING
7B-138-01	CARDIOLOGY ASSOC.	02201 Med. Private Prac. - no WD Req.	5	NEW	28-Aug-2007		0.33	NA-INSP PENDING

TOTAL OD PER-7 SEPT-07=5

RECIPROCITY INSPECTIONS - 2002 to 2007

LICENSEE	LICENSE #	EXPIRES	INSPECT DATE
RMRA Reciprocity - Category A			
ABC TESTING INC	RMRA-05-002	31 Dec 2005	
	RMRA-06-003	31 Dec 2006	
ACUREN INSPECTION	RMRA-06-004	31 Dec 2006	11 Oct 2006
	RMRA-07-004	31 Dec 2007	
BAKER TESTING SERVICES INC	RMRA-02-004	31 Dec 2002	22 Oct 2002
	RMRA-03-004	31 Dec 2003	
	RMRA-04-005	31 Dec 2004	02 Dec 2004
	RMRA-06-002	31 Dec 2006	06 Jun 2006
	RMRA-07-001	31 Dec 2007	13-Jul-2007
CONAM INSPECTION INC.	RMRA-02-002	31 Dec 2002	
	RMRA-03-002	31 Dec 2003	14 Apr 2003
	RMRA-04-001	31 Dec 2004	
ELITE INSPECTIONS SERVICES INC	RMRA-02-003	31 Dec 2002	
INTEGRATED TECHNOLOGIES INC	RMRA-02-005	31 Dec 2002	
	RMRA-03-001	31 Dec 2003	
	RMRA-04-003	31 Dec 2004	
JANX	RMRA-02-001	31 Dec 2002	
	RMRA-03-003	31 Dec 2003	10 Jun 2003
	RMRA-04-003	31 Dec 2004	
LONGVIEW INSPECTION INC	RMRA-04-002	31 Dec 2004	
	RMRA-05-001	31 Dec 2005	25 May 2005
QUALITY ASSURANCE LABORATORIES INC	RMRA-06-001	31 Dec 2006	
	RMRA-07-003	31 Dec 2007	
QUALITY INSPECTION SERVICES	RMRA-04-004	31 Dec 2004	
TEAM INDUSTRIAL SERVICES INC	RMRA-07-002	31 Dec 2007	
US INSPECTION SPERVICES INC	RMRA-07-005	31 Dec 2007	13 Jul 2007

YEAR	TYPE A	TYPE B	TOTAL A & B	TYPE C	TOTAL
2002	5	6	11	3	14
2003	4	6	10	4	14
2004	5	5	10	5	15
2005	2	5	7	11	18
2006	4	6	10	12	22
2007	5	6	11	10	21

YEAR	INSP: A & B	INSP: C	TOTAL INSP. DUE	TOTAL INSP. DONE
2002	2	0	2.2	2
2003	3	0	2	3
2004	2	2	2	4
2005	3	0	1.4	3
2006	3	2	2	5
2007	4	0	2.2	4
TOTAL:	17	4	11.8	21

RECIPROCITY INSPECTIONS - 2002 to 2007

RMRB Reciprocity - Category B			
CHASE ENVIRONMENTAL GROUP INC	RMRB-07-005	31 Dec 2007	
CIS-US INC	RMRB-02-006	31 Dec 2002	
	RMRB-03-006	31 Dec 2003	
	RMRB-04-005	31 Dec 2004	
	RMRB-05-004	31 Dec 2005	
	RMRB-06-004	31 Dec 2006	
	RMRB-07-006	31 Dec 2007	19 Jul 2007
	ECOLOGY SERVICES INC	RMRB-02-005	31 Dec 2002
EGS GAUGING INC	RMRB-03-004	31 Dec 2003	
	RMRB-04-004	31 Dec 2004	
	RMRB-02-003	31 Dec 2002	
ELEKTA INSTRUMENTS INC	RMRB-03-003	31 Dec 2003	04 Sep 2003
	RMRB-04-001	31 Dec 2004	
	RMRB-05-001	31 Dec 2005	
	RMRB-06-001	31 Dec 2006	
	RMRB-07-001	31 Dec 2007	
	GE HEALTHCARE	RMRB-06-005	31 Dec 2006
RMRB-07-004		31 Dec 2007	

RECIPROCITY INSPECTIONS - 2002 to 2007

LICENSEE	LICENSE #	EXPIRES	INSPECT DATE
RMRB Reciprocity - Category B			
MDS NORDION A DIVISION OF MDS (CANADA) INC	RMRB-02-002	31 Dec 2002	
	RMRB-03-002	31 Dec 2003	
	RMRB-04-002	31 Dec 2004	27 Jan 2004
	RMRB-05-002	31 Dec 2005	09 Mar 2005
	RMRB-06-003	31 Dec 2006	
	RMRB-07-002	31 Dec 2007	24 May 2007
NDC INFRARED ENGINEERING, INC.	RMRB-02-004	31 Dec 2002	
	RMRB-05-005	31 Dec 2005	
NUCLETRON CORPORATION	RMRB-02-001	31 Dec 2002	20 May 2002
	RMRB-03-001	31 Dec 2003	
	RMRB-04-003	31 Dec 2004	
	RMRB-05-003	31 Dec 2005	24 Feb 2005
	RMRB-06-002	31 Dec 2006	02 Mar 2006
	RMRB-07-003	31 Dec 2007	
OHMART & VEGA CORPORATION	RMRB-03-005	31 Dec 2003	
PHILOTECHNICS LTD	RMRB-06-006	31 Dec 2006	
RMRC Reciprocity - Category C			
ATC ASSOCIATES INC	RMRC-05-005	31 Dec 2005	
	RMRC-06-009	31 Dec 2006	
	RMRC-07-008	31 Dec 2007	
BECKMAN COULTER INC	RMRC-05-004	31 Dec 2005	
	RMRC-06-001	31 Dec 2006	
	RMRC-07-005	31 Dec 2007	
CAMP DRESSER & MCGEE INC	RMRC-05-010	31 Dec 2005	
EAGLE ENVIRONMENTAL INC	RMRC-06-010	31 Dec 2006	12 Jun 2006
EARTH TECH INC	RMRC-05-011	31 Dec 2005	

RECIPROCITY INSPECTIONS - 2002 to 2007

	RMRC-06-002	31 Dec 2006	
ENVIRONMENTAL LEAD DETECTION	RMRC-02-001	31 Dec 2002	
	RMRC-03-001	31 May 2003	
	RMRC-04-001	31 Dec 2004	
	RMRC-05-001	31 Dec 2005	
	RMRC-06-004	31 Dec 2006	
	RMRC-07-001	31 Dec 2007	
FUSS AND O'NEILL INC	RMRC-05-007	31 Dec 2005	
GAMMA IRRADIATOR SERVICE	RMRC-06-011	31 Dec 2006	
GEI CONSULTANTS INC	RMRC-04-005	31 Dec 2004	
	RMRC-06-012	31 Dec 2006	
	RMRC-07-004	31 Dec 2007	
GEOTESTING EXPRESS INC	RMRC-04-004	31 Dec 2004	20 Apr 2004
	RMRC-05-006	31 Dec 2005	
	RMRC-06-008	31 Dec 2006	
	RMRC-07-003	31 Dec 2007	

RECIPROCITY INSPECTIONS - 2002 to 2007

LICENSEE	LICENSE #	EXPIRES	INSPECT DATE
RMRC Reciprocity - Category C			
HALEY & ALDRICH INC	RMRC-05-008	31 Dec 2005	
	RMRC-06-003	31 Dec 2006	
HTE NORTHEAST INC	RMRC-07-006	31 Dec 2007	
J.L. SHEPHERD & ASSOCIATES	RMRC-03-003	31 Dec 2003	
LEADSAFE ENVIRONMENTAL SERVICES INC	RMRC-02-002	31 Dec 2002	
	RMRC-03-002	31 Dec 2003	
	RMRC-04-002	31 Dec 2004	
	RMRC-05-002	31 Dec 2005	
	RMRC-06-006	31 Dec 2006	
	RMRC-07-002	31 Dec 2007	
MILLER ENGINEERING & TESTING INC	RMRC-05-009	31 Dec 2005	
	RMRC-06-007	31 Dec 2006	
PARE ENGINEERING CORPORATION	RMRC-03-005	31 Dec 2003	
	RMRC-04-003	31 Dec 2004	20 Apr 2004
	RMRC-05-003	31 Dec 2005	
	RMRC-06-005	31 Dec 2006	
	RMRC-07-007	31 Dec 2007	
PENNONI ASSOCIATES INC	RMRC-02-003	31 Dec 2002	
PINE AND SWALLOW ASSOCIATES INC	RMRC-07-010	31 Dec 2007	
S W COLE ENGINEERING INC	RMRC-03-004	31 Dec 2003	
TIBBETTS ENGINEERING CORPORATION	RMRC-07-009	31 Dec 2007	

APPENDIX 4
ACCOMPANIMENTS - 2002 to 2007

INSPECTOR	SUPERVISOR	LICENSE #	LICENSEE	LICENSE CATEGORY	DATE
2002					
D. KLACZYNSKI	J. FERRUOLO	7B-073-02	RICHARD P SANANTONIO MD	02201 Med. Private Prac. - no WD Req.	11-Sep-2002
D. KLACZYNSKI	J. FERRUOLO	3B-114-01	CARDINAL HEALTH	02500 Nuclear Pharmacies	7-Oct-2002
C. WARING	J. FERRUOLO	7B-125-01	CARDIOVASCULAR ASSOCIATES OF RHODE ISLAND	02201 Med. Private Prac. - no WD Req.	8-Jan-2002
C. WARING	J. FERRUOLO	3L-015-01	RI DEPT OF TRANSPORTATION	03121 Meas Sys Port Gauge inc Lixiscop	25-Jul-2002
2003					
D. KLACZYNSKI	J. FERRUOLO	3D-083-02	PK ASSOCIATES	03320 Indust. Radiography Temp Jobsite	24-Jan-2003
D. KLACZYNSKI	J. FERRUOLO	3L-083-01	PK ASSOCIATES	03121 Meas Sys Port Gauge inc Lixiscop	24-Jan-2003
D. KLACZYNSKI	J. FERRUOLO	RMRA-03-002	CONAM-reciprocity RHODE ISLAND	03320 Indust. Radiography Temp Jobsite	14-Apr-2003
D. KLACZYNSKI	J. FERRUOLO	7D-051-01	HOSPITAL	02110 Med. Institution Broad	15-Apr-2003
2004					
D. KLACZYNSKI	J. FERRUOLO	7D-026-01	ROGER WILLIAMS MEDICAL CENTER	02110 Med. Institution Broad	4-Feb-2004
2005					
D. KLACZYNSKI	J. FERRUOLO	7B-131-01	RHODE ISLAND P.E.T. SERVICES LLC	02220 Mobile Nuclear Medicine Serv.	31-Jan-2005
C. WARING	J. FERRUOLO	3L-050-01	GEISSER ENGINEERING CORPORATION.	03121 Meas Sys Port Gauge inc Lixiscop	1-Jun-2005
D. KLACZYNSKI	W. DUNDULIS	7A-051-02	RHODE ISLAND HOSPITAL	02310 Stereotactic Radiosurgery	26-Jul-2005
2006					
D. KLACZYNSKI	J. FERRUOLO	7D-026-01	ROGER WILLIAMS MEDICAL CENTER	02110 Med. Institution Broad	3-Feb-2006
D. KLACZYNSKI	J. FERRUOLO	3L-050-01	GEISSER ENGINEERING CORPORATION.	03121 Meas Sys Port Gauge inc Lixiscop	28-Feb-2006
D. KLACZYNSKI	J. FERRUOLO	3D-064-01	ANVIL INTERNATIONAL INC	03320 Indust. Radiography Temp Jobsite	6-Mar-2006
D. KLACZYNSKI	J. FERRUOLO	7A-051-02-IC	RHODE ISLAND HOSPITAL	02310 Stereotactic Radiosurgery	20-Jun-2006
2007					
D. KLACZYNSKI	J. FERRUOLO	RMRB-07-002	MDS NORDION- reciprocity	03225 Teletherapy Services	15-May-2007

APPENDIX 5-CURRENT LICENSEES

LICENSE #	LICENSEE	NRC LICENSE TYPE	STATUS	EXPIRES
3D-005-01	ELECTRIC BOAT CORPORATION	03320 Indust. Radiography Temp Jobsite	Active	30 Jun 2012
3D-065-01	THIELSCH ENGINEERING INC	03320 Indust. Radiography Temp Jobsite	Active	31 Aug 2012
3D-083-02	PK ASSOCIATES	03320 Indust. Radiography Temp Jobsite	Active	31 Dec 2015
3E-100-01	RHODE ISLAND BLOOD CENTER	03510 Irrad. Self-Shield < 370 TBq	Active	31 Mar 2016
3K-036-01	BROWN UNIVERSITY	01100 Academic Type A Broad	Active	30 Jun 2012
3K-040-01	UNIVERSITY OF RHODE ISLAND	01100 Academic Type A Broad	Active	31 Jul 2012
3K-123-01	PROVIDENCE COLLEGE	03620 Research/Development Other	Active	31 Mar 2010
3K-126-01	OCEAN STATE VETERINARY SPECIALISTS	02400 Veterinary Nonhuman	Active	31 Aug 2016
3K-136-01	VERO SCIENCE LLC	03620 Research/Development Other	Active	31 Jan 2017
3L-015-01	RI DEPT OF TRANSPORTATION	03121 Meas Sys Port Gauge inc Lixiscop	Active	31 Aug 2010
3L-050-01	GEISSER ENGINEERING CORPORATION.	03121 Meas Sys Port Gauge inc Lixiscop	Active	31 Dec 2015
3L-055-01	OSRAM SYLVANIA PRODUCTS INC	03120 Measuring System Fixed Gauges	Active	30 Jun 2015
3L-065-02	THIELSCH ENGINEERING INC	03121 Meas Sys Port Gauge inc Lixiscop	Active	28 Feb 2013
3L-070-01	J H LYNCH & SONS	03121 Meas Sys Port Gauge inc Lixiscop	Active	30 Jun 2015
3L-079-01	GZA GEOENVIRONMENTAL INC	03121 Meas Sys Port Gauge inc Lixiscop	Active	31 Oct 2011
3L-083-01	PK ASSOCIATES	03121 Meas Sys Port Gauge inc Lixiscop	Active	31 May 2013
3L-096-01	PROFESSIONAL SERVICE INDUSTRIES INC	03121 Meas Sys Port Gauge inc Lixiscop	Active	31 Mar 2015
3L-107-01	PAUL B ALDINGER & ASSOCIATES INC	03121 Meas Sys Port Gauge inc Lixiscop	Active	30 Sep 2014
3L-115-01	NORTHEAST ENGINEERS & CONSULTANTS INC	03121 Meas Sys Port Gauge inc Lixiscop	Active	31 May 2015

APPENDIX 5-CURRENT LICENSEES

LICENSE #	LICENSEE	NRC LICENSE TYPE	STATUS	EXPIRES
3L-118-01	FUSS & O'NEILL,ENVIROSCIENCE CONSULTANTS LLC	03121 Meas Sys Port Gauge inc Lixiscop	Active	31 Mar 2016
3L-119-01	JGI EASTERN INC	03121 Meas Sys Port Gauge inc Lixiscop	Active	30 Apr 2016
3L-135-01	HALEY AND ALDRICH INC	03121 Meas Sys Port Gauge inc Lixiscop	Active	31 Mar 2016
7A-051-02	RHODE ISLAND HOSPITAL	02310 Stereotactic Radiosurgery	Active	31 Dec 2011
7B-038-03	NORTH MAIN RADIATION ONCOLOGY	02230 High-Med-Pulsed Dose Afterload	Active	30 Sep 2013
7B-043-01	MEMORIAL HOSPITAL OF RHODE ISLAND	02120 Med. Institution - WD Req.	Active	30 Apr 2012
7B-053-02	RADIATION ONCOLOGY SERVICES OF RHODE ISLAND	02230 High-Med-Pulsed Dose Afterload	Active	30 Sep 2013
7B-073-02	RICHARD P SANANTONIO MD	02201 Med. Private Prac. - no WD Req.	Active	31 Aug 2012
7B-091-01	DAVID J FORTUNATO MD	02201 Med. Private Prac. - no WD Req.	Active	30 Sep 2011
7B-109-01	NAVIX DIAGNOSTIX INC	02201 Med. Private Prac. - no WD Req.	Active	30 Nov 2013
7B-120-01	JOHN D LOWNEY DO	02201 Med. Private Prac. - no WD Req.	Active	31 Aug 2013
7B-127-01	BLACKSTONE CARDIOLOGY ASSOCIATES	02201 Med. Private Prac. - no WD Req.	Active	30 Nov 2011
7B-129-01	SOUTH COUNTY CARDIOLOGY ASSOCIATES INC	02201 Med. Private Prac. - no WD Req.	Active	31 Dec 2013
7B-130-01	GLL CARDIOLOGY LLC	02201 Med. Private Prac. - no WD Req.	Active	31 Mar 2014
7B-131-01	RHODE ISLAND P.E.T. SERVICES LLC	02220 Mobile Nuclear Medicine Serv.	Active	30 Apr 2014
7B-132-01	PETER TILKEMEIER MD	02201 Med. Private Prac. - no WD Req.	Active	30 Apr 2014
7B-133-01	DIGIRAD IMAGING SOLUTIONS INC	02201 Med. Private Prac. - no WD Req.	Active	31 Jan 2015
7B-134-01	CARDIOLOGY SPECIALISTS LLC	02201 Med. Private Prac. - no WD Req.	Active	30 Apr 2015
7B-137-01	RHODE ISLAND CARDIOVASCULAR GROUP	02201 Med. Private Prac. - no WD Req.	Active	31 Jan 2017
7B-138-01	CARDIOLOGY ASSOCIATES INC	02201 Med. Private Prac. - no WD Req.	Active	28 Feb 2017

APPENDIX 5-CURRENT LICENSEES

LICENSE #	LICENSEE	NRC LICENSE TYPE	STATUS	EXPIRES
7D-026-01	ROGER WILLIAMS MEDICAL CENTER	02110 Med. Institution Broad	Active	31 Oct 2012
7D-045-02	WOMEN & INFANTS HOSPITAL OF RHODE ISLAND	02110 Med. Institution Broad	Active	31 May 2012
8A-009-01	RI EMERGENCY MANAGEMENT AGENCY	03710 Civil Defense	Active	30 Jun 2016
8A-009-02	RI EMERGENCY MANAGEMENT AGENCY	03710 Civil Defense	Active	31 May 2016
3A-105-01	THERMO NITON ANALYZERS LLC	03214 Manufact. Distrib. Other	TR-timely renewal	30 Jun 2005
3B-114-01	CARDINAL HEALTH	02500 Nuclear Pharmacies	TR	31 Mar 2005
3D-095-01	OCEAN STATE TESTING INC	03320 Indust. Radiography Temp Jobsite	TR	31 Dec 2002
3D-117-01	OCEAN STATE TECHNICAL SERVICES	03320 Indust. Radiography Temp Jobsite	TR	30 Sep 2000
3G-105-02	THERMO NITON ANALYZERS LLC	03240 General Lic. Distribute C.5.5(d)	TR	30 Sep 2001
3K-063-01	RI ATOMIC ENERGY COMMISSION	01100 Academic Type A Broad	TR	31 Mar 2006
3L-057-01	RI DEPT OF HEALTH LABORATORY	03124 Measuring Systems - Other	TR	30 Jun 2004
7B-012-01	SOUTH COUNTY HOSPITAL	02120 Med. Institution - WD Req.	TR	30 Apr 2004
7B-016-01	NEWPORT HOSPITAL	02120 Med. Institution - WD Req.	TR	31 Mar 2003
7B-019-01	LANDMARK MEDICAL CENTER	02120 Med. Institution - WD Req.	TR	31 Oct 2004
7B-020-01	KENT HOSPITAL	02120 Med. Institution - WD Req.	TR	31 Jan 2005
7B-025-01	ST JOSEPH HOSPITAL	02120 Med. Institution - WD Req.	TR	30 Jun 2004
7B-035-01	WESTERLY HOSPITAL	02120 Med. Institution - WD Req.	TR	31 Jul 2001
7B-121-01	RHODE ISLAND CARDIOLOGY CENTER	02201 Med. Private Prac. - no WD Req.	TR	28 Feb 2003
7B-125-01	CARDIOVASCULAR ASSOCIATES OF RHODE ISLAND	02201 Med. Private Prac. - no WD Req.	TR	31 May 2005
7D-051-01	RHODE ISLAND HOSPITAL	02110 Med. Institution Broad	TR	31 Aug 2002

**APPENDIX 6
LICENSE TERMINATIONS - 2002 to 2007**

LICENSE #	LICENSEE	NRC LICENSE TYPE	STATUS	EXPIRES	AMEND #	DATE	STATE
2B-038-02	NORTH MAIN RADIATION ONCOLOGY	11210 Source Material Shielding	TERM	31 Jul 2007	2	29 Sep 2003	RI
3D-064-01	ANVIL INTERNATIONAL INC	03320 Indust. Radiography Temp Jobsite	TERM	28 Feb 2007	15	03 Nov 2006	RI
3K-023-01	RI PSYCHIATRIC RESEARCH	03620 Research/Development Other	TERM	31 Mar 2004	10	30 Oct 2003	RI
3K-128-01	PAN PACIFIC PHARMACEUTICALS INC.	03620 Research/Development Other	TERM	31 Jan 2007	1	06 Jan 2003	RI
3L-062-01	BRISTOL METAL CO, INC.	03800 Radio. Material Possess Only	TERM	31 May 2001	2	30 May 2003	RI
3L-116-01	NARRAGANSETT INDIAN TRIBE	03800 Radio. Material Possess Only	TERM	30 Jun 2005	4	07 Jun 2006	RI
3L-117-02	OCEAN STATE TECHNICAL SERVICES	03121 Meas Sys Port Gauge inc Lixiscop	TERM	30 Sep 2007	1	18 Apr 2007	RI
7A-053-01	RADIATION ONCOLOGY SERVICES	02300 Teletherapy	TERM	31 May 2014	15	21 May 2007	RI
7B-021-01	RI MEDICAL IMAGING	02200 Med. Private Prac. - WD Req.	TERM	30 Apr 2001	11	29 Apr 2003	RI
7B-041-01	TOLLGATE RADIOLOGY, INC	03800 Radio. Material Possess Only	TERM	31 Oct 2002	10	18 Apr 2003	RI

**APPENDIX 7A
OVERDUE RENEWALS - 2002 to 2007**

LICENSE #	LICENSEE	NRC LICENSE TYPE	STATUS	EXPIRED	# AMEND ISSUED	MOST RECENT
3D-117-01	OCEAN STATE TECHNICAL SERVICES	03320 Indust. Radiography Temp Jobsite	TR	30 Sep 2000	3	14 Sep 2006
7B-035-01	WESTERLY HOSPITAL	02120 Med. Institution - WD Req.	TR	31 Jul 2001	5	27 Aug 2007
3G-105-02	THERMO ELECTRON CORP-PORTABLE ELEMENTAL ANALYSIS DIV	03240 General Lic. Distribute C.5.5(d)	TR	30 Sep 2001	5	05 Feb 2007
7D-051-01	RHODE ISLAND HOSPITAL	02110 Med. Institution Broad	TR	31 Aug 2002	20	08 Jun 2007
3D-095-01	OCEAN STATE TESTING INC	03320 Indust. Radiography Temp Jobsite	TR	31 Dec 2002	1	14 Oct 2005
7B-121-01	RHODE ISLAND CARDIOLOGY CENTER	02201 Med. Private Prac. - no WD Req.	TR	28 Feb 2003	4	04 Oct 2006
7B-016-01	NEWPORT HOSPITAL	02120 Med. Institution - WD Req.	TR	31 Mar 2003	0	N/A
7B-012-01	SOUTH COUNTY HOSPITAL	02120 Med. Institution - WD Req.	TR	30 Apr 2004	5	31 Jul 2006
3L-057-01	RI DEPT OF HEALTH LABORATORY	03124 Measuring Systems -Other	TR	30 Jun 2004	1	23 Apr 2007
7B-025-01	ST JOSEPH HOSPITAL	02120 Med. Institution - WD Req.	TR	30 Jun 2004	2	12 Dec 2005
7B-019-01	LANDMARK MEDICAL CENTER	02120 Med. Institution - WD Req.	TR	31 Oct 2004	4	21 Apr 2006
7B-020-01	KENT HOSPITAL	02120 Med. Institution - WD Req.	TR	31 Jan 2005	0	N/A
3B-114-01	CARDINAL HEALTH	02500 Nuclear Pharmacies	TR	31 Mar 2005	3	08 Mar 2007
7B-125-01	CARDIOVASCULAR ASSOCIATES OF RHODE ISLAND	02201 Med. Private Prac. - no WD Req.	TR	31 May 2005	1	04 May 2005
3A-105-01	THERMO ELECTRON CORP-PORTABLE ELEMENTAL ANALYSIS DIV	03214 Manufact. Distrib. Other	TR	30 Jun 2005	8	05 Feb 2007
3K-063-01	RI ATOMIC ENERGY COMMISSION	01100 Academic Type A Broad	TR	31 Mar 2006	0	N/A

NOTE: "# AMEND ISSUED" --REFERS TO THE ACTUAL # ISSUED SINCE THE RENEWAL APPLICATION WAS RECEIVED

**APPENDIX 7B
LICENSING ACTIONS - 2002 to 2007**

CALENDAR YEAR	AMENDMENT REQUESTS	TOTAL PENDING AMENDMENTS	NEW LICENSES	TOTAL PENDING	RENEWALS	TOTAL PENDING	TERMINATED	TOTAL PENDING
2000						1		
2001						2		
2002	39	0	2	0	9	2	3	0
2003	29	0	2	0	7	2	7	0
2004	29	0	3	0	8	5	0	0
2005	59	0	2	0	5	3	0	0
2006	60	0	3	0	4	1	1	0
2007*	40	2	0	0	0	0	1	0
TOTAL:	256	2	12	0	33	16	12	0

* AWAITING RESPONSE FROM LICESEES

AVERAGE # OF DAYS TO COMPLETE: AMENDMENT, NEW, OR TERMINATION- LICENSING ACTION=12 [once initiated]