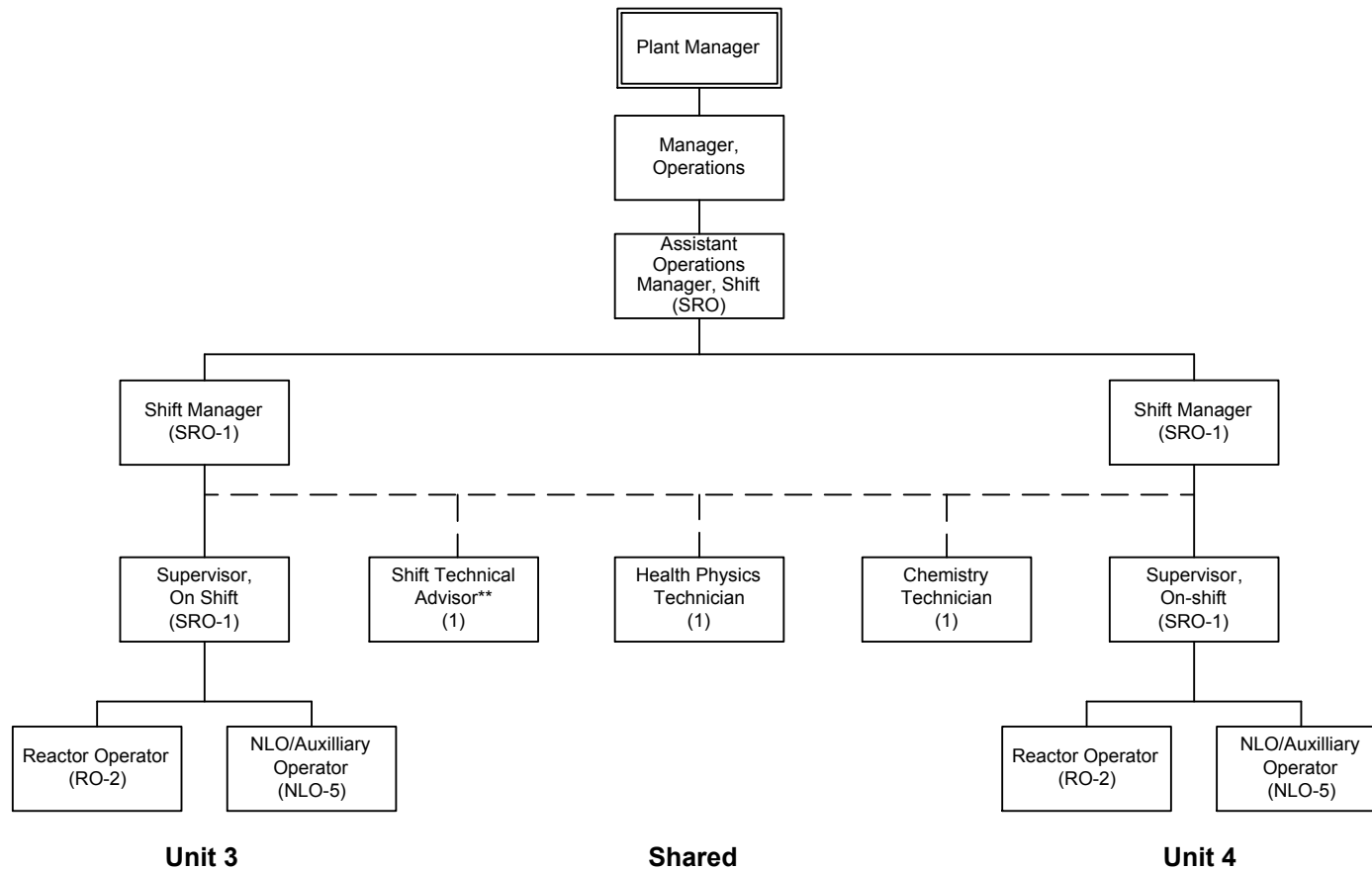


Bellefonte Nuclear Plant, Units 3 & 4  
COL Application  
Part 2, FSAR



\*\*may be met by onshift combined SRO/STA  
 SRO - licensed senior reactor operator  
 RO - licensed reactor operator  
 NLO - non-licensed operator

Shift Manning - 5 shifts (minimum)  
 (No.) - indicate number of positions per shift