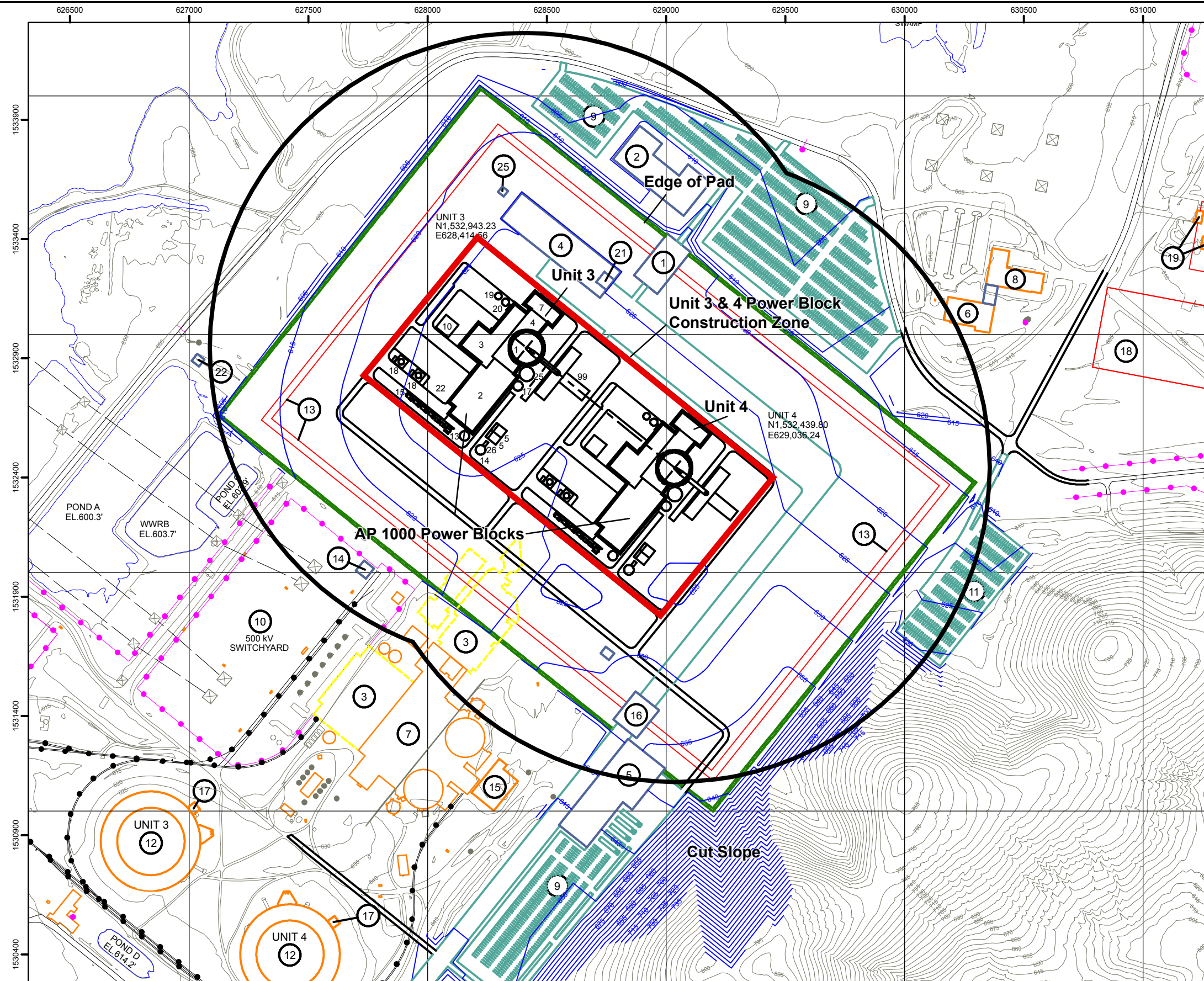


Bellefonte Nuclear, Units 3 & 4  
COL Application  
Part 2, FSAR



**Explanation**

**New Units 3 & 4 Generation Facility Legend**

- 1. CONTAINMENT/SHIELD BUILDING
- 2. TURBINE BUILDING
- 3. ANNEX BUILDING
- 4. AUXILIARY BUILDING
- 5. SWS COOLING TOWERS
- 7. RADWASTE BUILDING
- 10. DIESEL GENERATOR BUILDING
- 13. FIRE WATER/CLEARWELL STORAGE TANK
- 14. FIRE WATER STORAGE TANK
- 15. TRANSFORMER AREA
- 17. CONDENSATE STORAGE TANK
- 18. DIESEL GENERATOR OIL STORAGE TANKS
- 19. DEMINERALIZED WATER STORAGE TANK
- 20. BORIC ACID STORAGE TANK
- 22. TURBINE BUILDING LAYDOWN AREA
- 25. PASSIVE CONTAINMENT COOLING ANCILLARY WATER STORAGE TANK
- 26. DIESEL-DRIVEN FIRE PUMP/ENCLOSURE
- 99. T-PAD FOR CRANE

**Building Legend**

- ① NEW PRIMARY ACCESS PORTAL & SECONDARY ALARM STATION
- ② NEW ADMINISTRATION BUILDING
- ③ REMOVE EXIST BLDGS.
- ④ NEW MAINTENANCE BUILDING
- ⑤ NEW MATERIAL RECEIVING & SALLY PORT BUILDING
- ⑥ EXISTING SIMULATOR BUILDINGS
- ⑦ EXISTING UNIT 1 & 2 BUILDINGS
- ⑧ EXISTING SITE TRAINING BLDG
- ⑨ NEW SITE PARKING
- ⑩ EXISTING SWITCHYARD
- ⑪ NEW OUTAGE PARKING
- ⑫ EXISTING COOLING TOWERS
- ⑬ NEW SECURITY FENCE ASSY.
- ⑭ NEW SWITCHYARD BUILDING
- ⑮ EXISTING STORAGE AREA
- ⑯ NEW SECURITY ACCESS BLDG
- ⑰ NEW CIRCULATING PUMPS
- ⑱ NEW PSO SWITCHYARD FACILITY
- ⑲ EXISTING SECURITY RANGE FACILITY
- ⑳ NEW SECURITY TRAINING BUILDING
- ㉑ NEW TECH SUPPORT CENTER (WITHIN MAINTENANCE BUILDING)
- ㉒ NEW H2 STORAGE BUILDING
- ㉓ NEW HAZ. WASTE STORAGE BUILDING
- ㉔ EXISTING INTAKE PUMPING STATION

**Pond Legend**

- POND A - YARD DRAINAGE POND
- POND B - WASTE WATER RETENTION BASIN
- POND C - CONCENTRATED CHEMICAL TREATMENT POND (LINED)
- POND D - DESILTING POND
- POND E - ALUM SLUDGE PONDS
- POND F - CONSTRUCTION HOLDING POND
- POND G - EAST CULVERT IMPOUNDMENT POND

**Notes:**

- 1. ELEVATIONS SHOWN ARE BASED ON MEAN SEA LEVEL (MSL).
- 2. EXISTING CONDITIONS AND TOPOGRAPHIC CONTOURS BASED UPON THE SANBORN MAP COMPANY, INC. PHOTOGRAMMETRIC SURVEY PERFORMED ON MARCH 26, 2006 PROJECT NO. 060319.
- 3. CONTOUR INTERVAL IS 5 FEET.
- 4. 1000 FOOT GRID AND COORDINATE VALUES ARE BASED UPON AL EAST STATE PLANE COORDINATE SYSTEM NAD 83.

