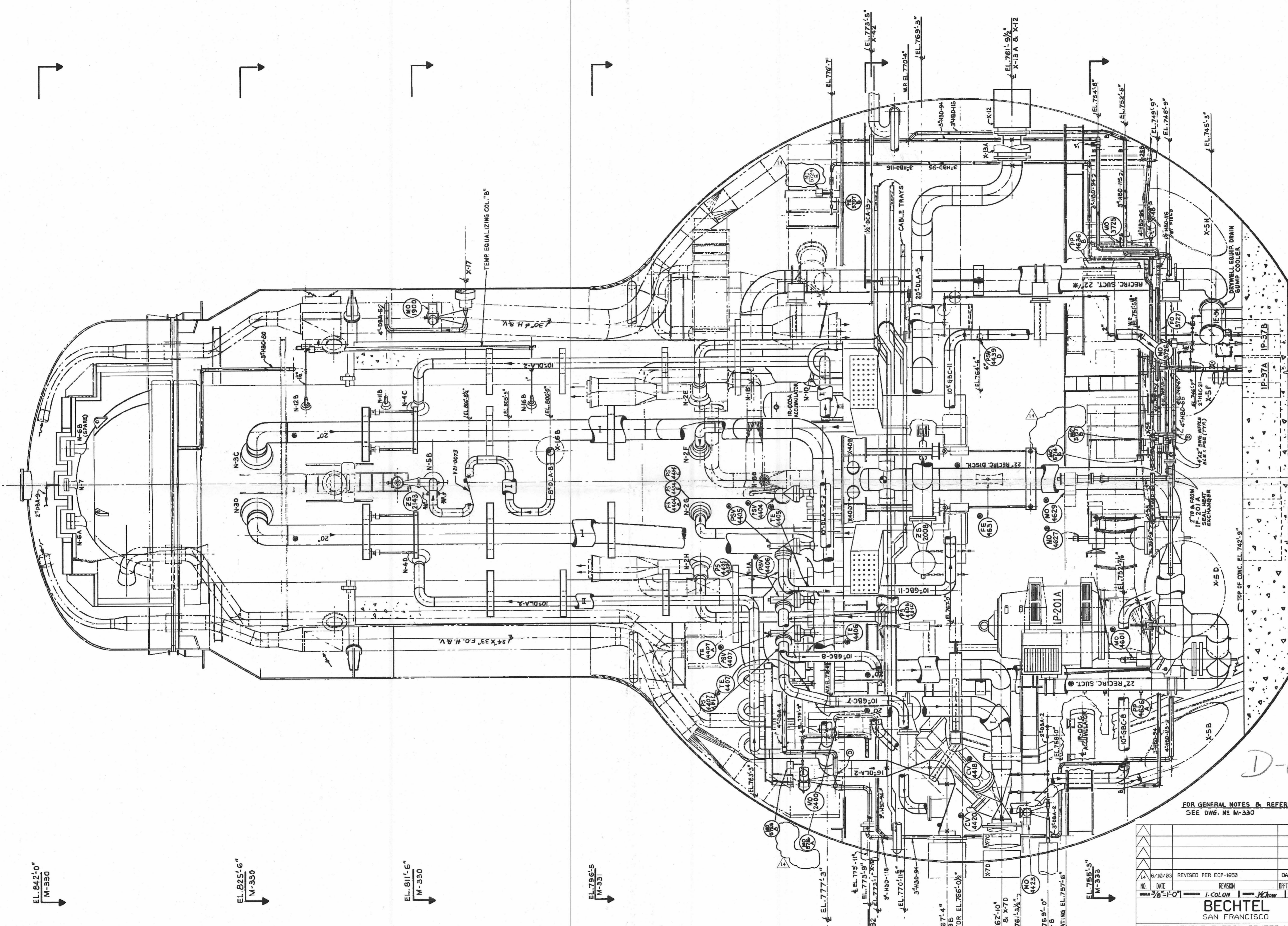


This drawing and the design it covers are the property of BECHTEL. They are hereby loaned and on the borrower's express agreement that they will not be reproduced, copied, altered, or used except in the limited way and within the limits set forth in the license to the borrower.



SECTION D-D

EL. 842'-0" M-330 →

EL. 825'-6" M-330 →

EL. 811'-6" M-330 →

EL. 796'-5" M-331 →

FOR GENERAL NOTES & REFERENCES
SEE DWG. NO. M-330

NO.	DATE	REVISION	BY	CHKD	ENGR	VER
1	6/10/03	REVISED PER ECP-1658	DA	JAH	LAL	TH
2	5/1/01	1. COLON	JK	JK	JK	JK

BECHTEL
SAN FRANCISCO

DUANE ARNOLD ENERGY CENTER-UNIT NO 1
IOWA ELECTRIC LIGHT AND POWER COMPANY
CEDAR RAPIDS, IOWA

**DRYWELL PIPING DRAWING
SECTION D-D**

DRAWING NO. **BECH-M341** REV. 14

NO.	DATE	REVISIONS	BY	CHKD	ENGR	VER
1		ISSUED PER DWPSES (E-C)				
2		REV. PER DLR 132510E-S				
3		REV. PER DCR-7671670E				
4		REVISED PER DCR 4407				
5		REVISED PER DCR 7493				
6		REVISED PER ECP 1658				
7		REVISED PER ECP 1658				
8		REVISED PER ECP 1658				
9		REVISED PER ECP 1658				
10		REVISED PER ECP 1658				

D-03X