



Nuclear Fuel Services, Inc.
1205 Banner Hill Road
Erwin, TN 37650
(423) 743-9141

DHL

21G-07-0115
GOV-01-55-04
ACF-07-0271

September 14, 2007

Jennifer Foster
U.S. Nuclear Regulatory Commission
Region II
Atlanta Federal Center
61 Forsyth Street, SW
Suite 23T85
Atlanta, Georgia 30303

Subject: Contaminant Isopleth Maps

Dear Ms. Foster:

During a conversation with Scott Morie and Janice Greene of Nuclear Fuel Services, Inc. on September 7, 2007, you requested contaminant isopleth maps of the North Site and Survey Unit 4. This submittal is in response to that request.

If you or your staff have any questions, require additional information, or wish to discuss this matter further, please contact me or Scott Morie, at (423) 743-9141. Please reference our unique document identification number (21G-07-0115) in any correspondence concerning this letter.

Sincerely,
NUCLEAR FUEL SERVICES, INC.

A handwritten signature in cursive script that reads "BMMoore".

B. Marie Moore
Vice President, Safety & Regulatory

Attachment

cc: Regional Administrator
U.S. Nuclear Regulatory Commission
Region II
Atlanta Federal Center
61 Forsyth Street, SW
Suite 23T85
Atlanta, Georgia 30303

Mr. Manuel Crespo
Project Inspector
U.S. Nuclear Regulatory Commission
Region II
Atlanta Federal Center
61 Forsyth Street, SW
Suite 23T85
Atlanta, Georgia 30303

Mr. Stephen Burris
Senior Resident Inspector
U.S. Nuclear Regulatory Commission

ATTACHMENT
Contaminant Isopleth Maps
of North Site and Survey Unit 4

(16 pages to follow)

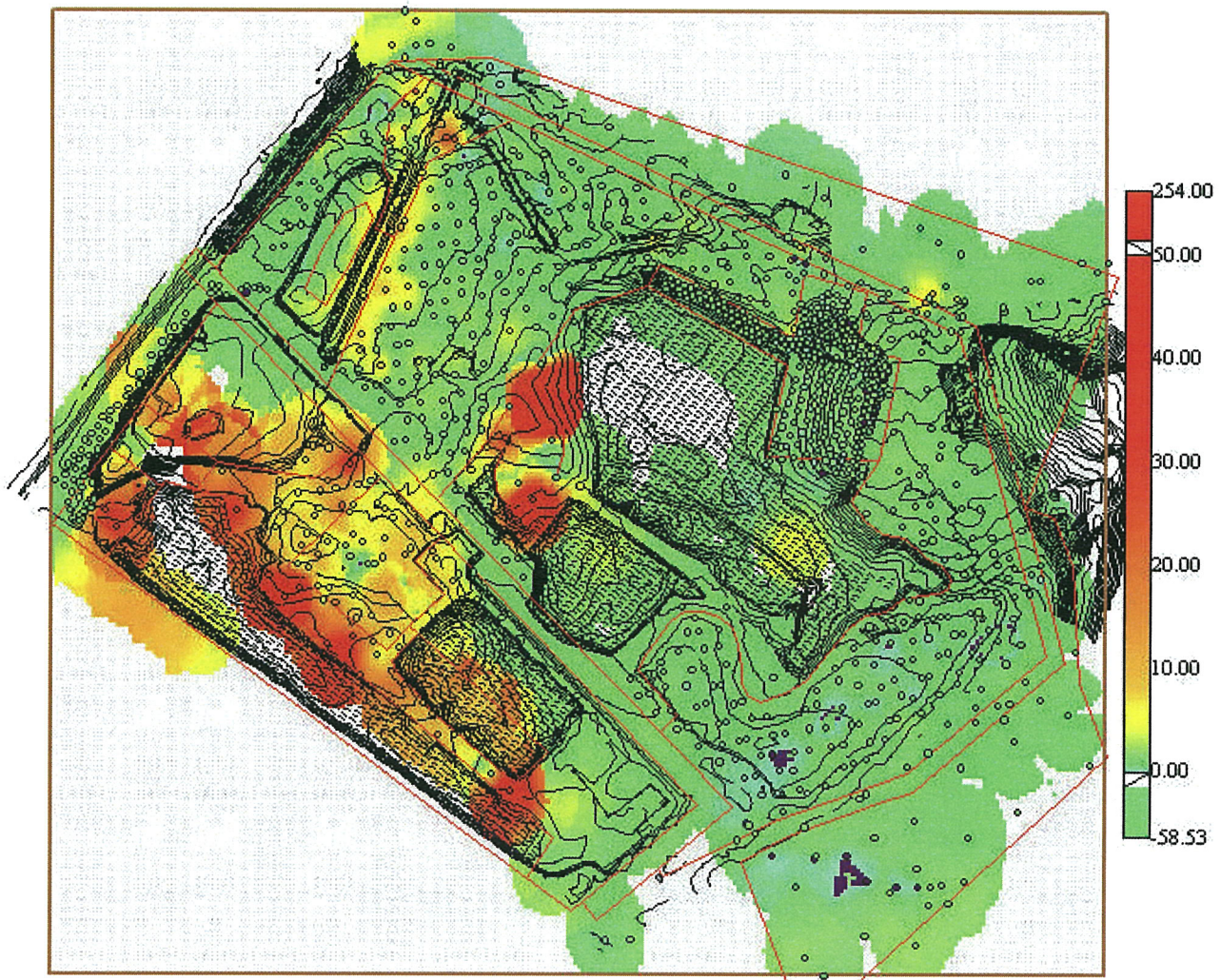


Figure 1. NFS North Site, 0-1 ft.

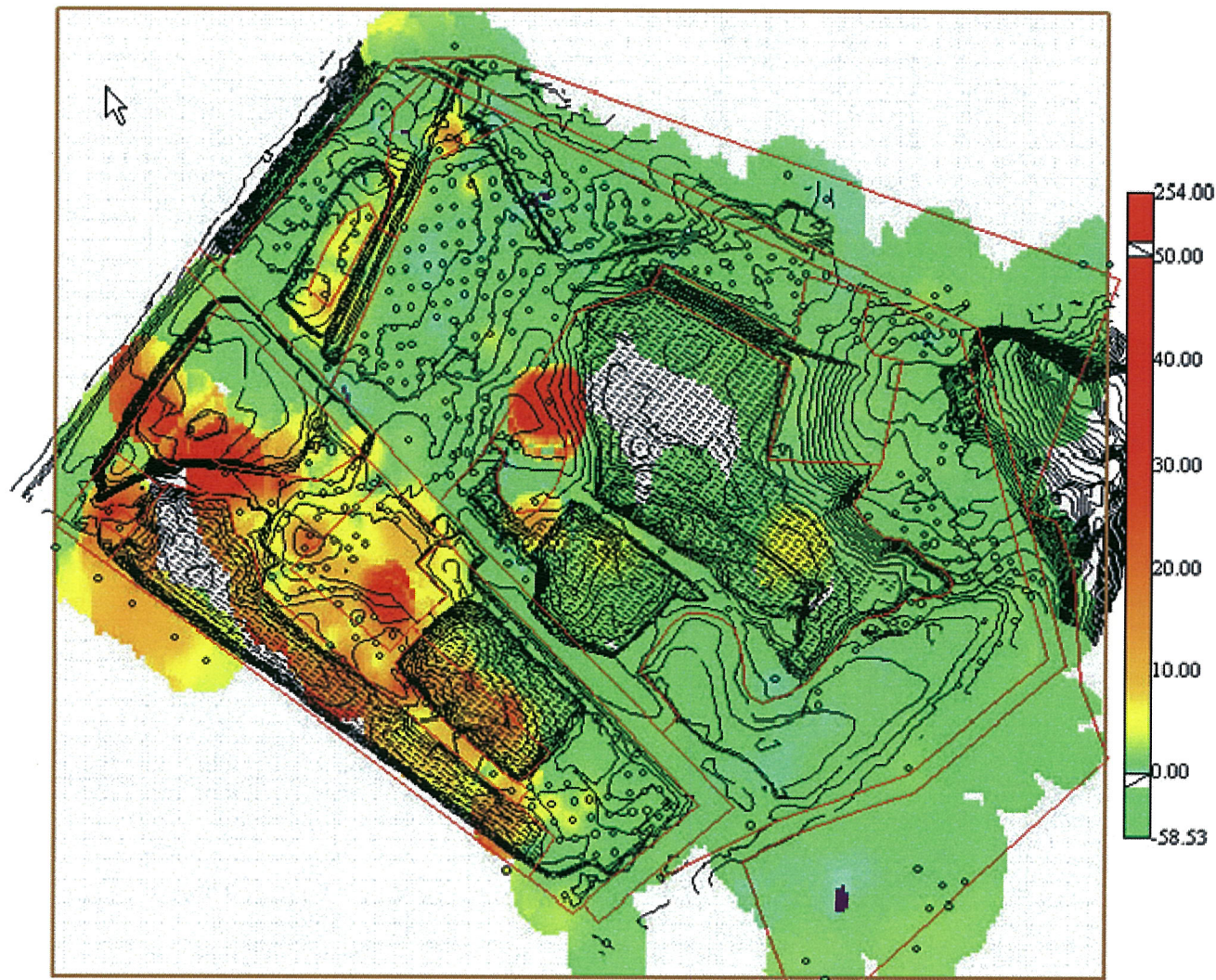


Figure 2. NFS North Site, 1-2 ft.

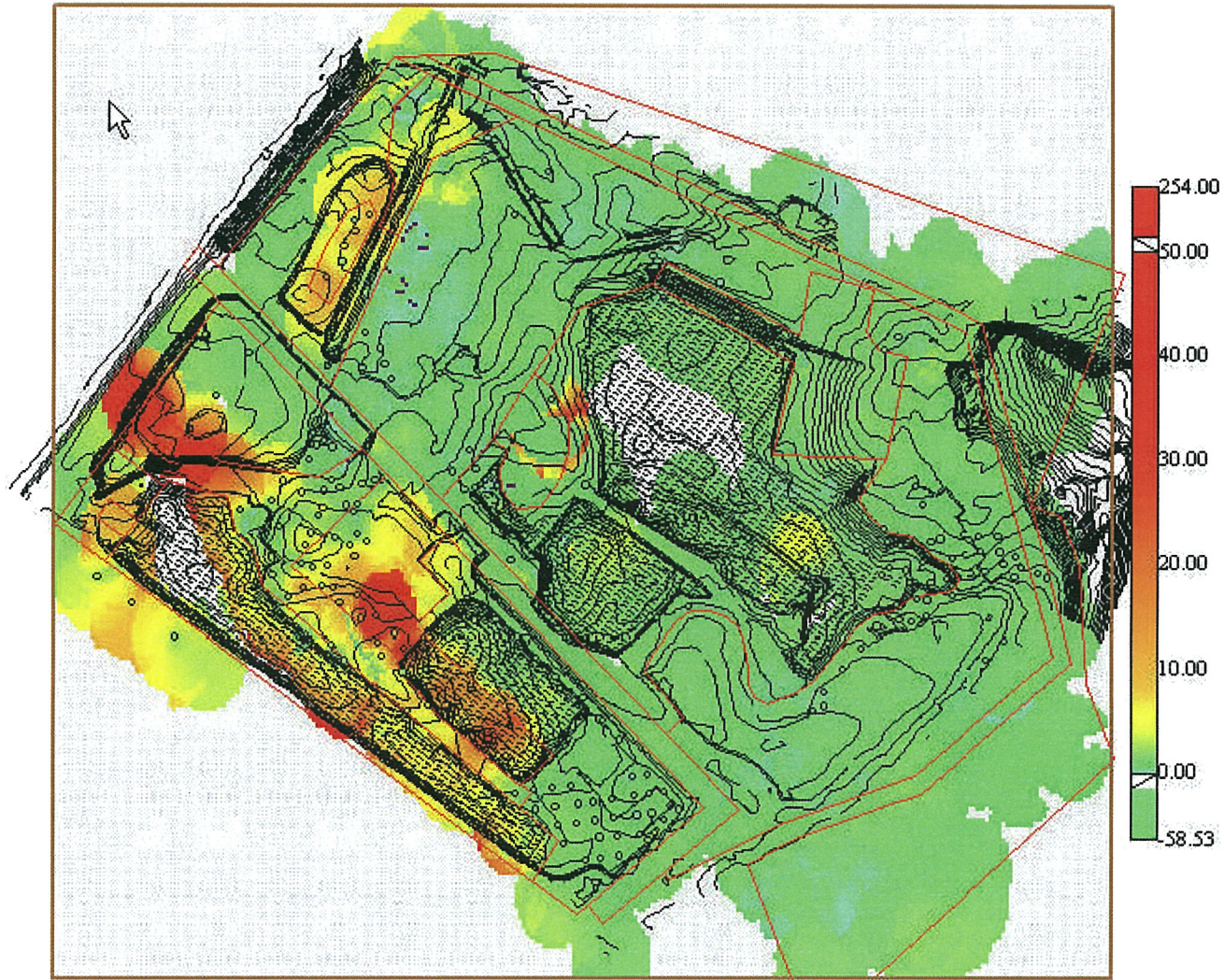


Figure 3. NFS North Site, 2-3 ft.

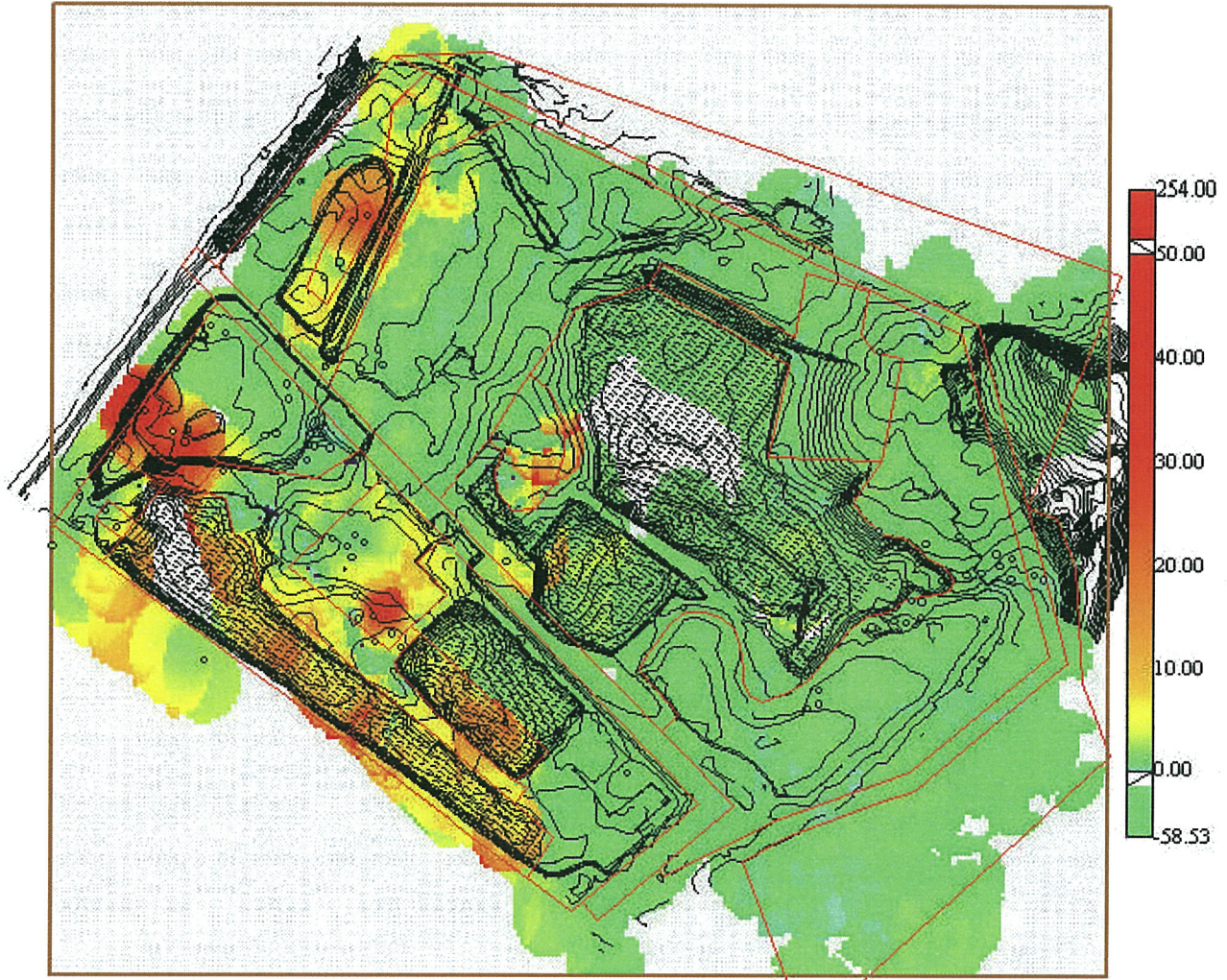


Figure 4. NFS North Site, 3-4 ft.

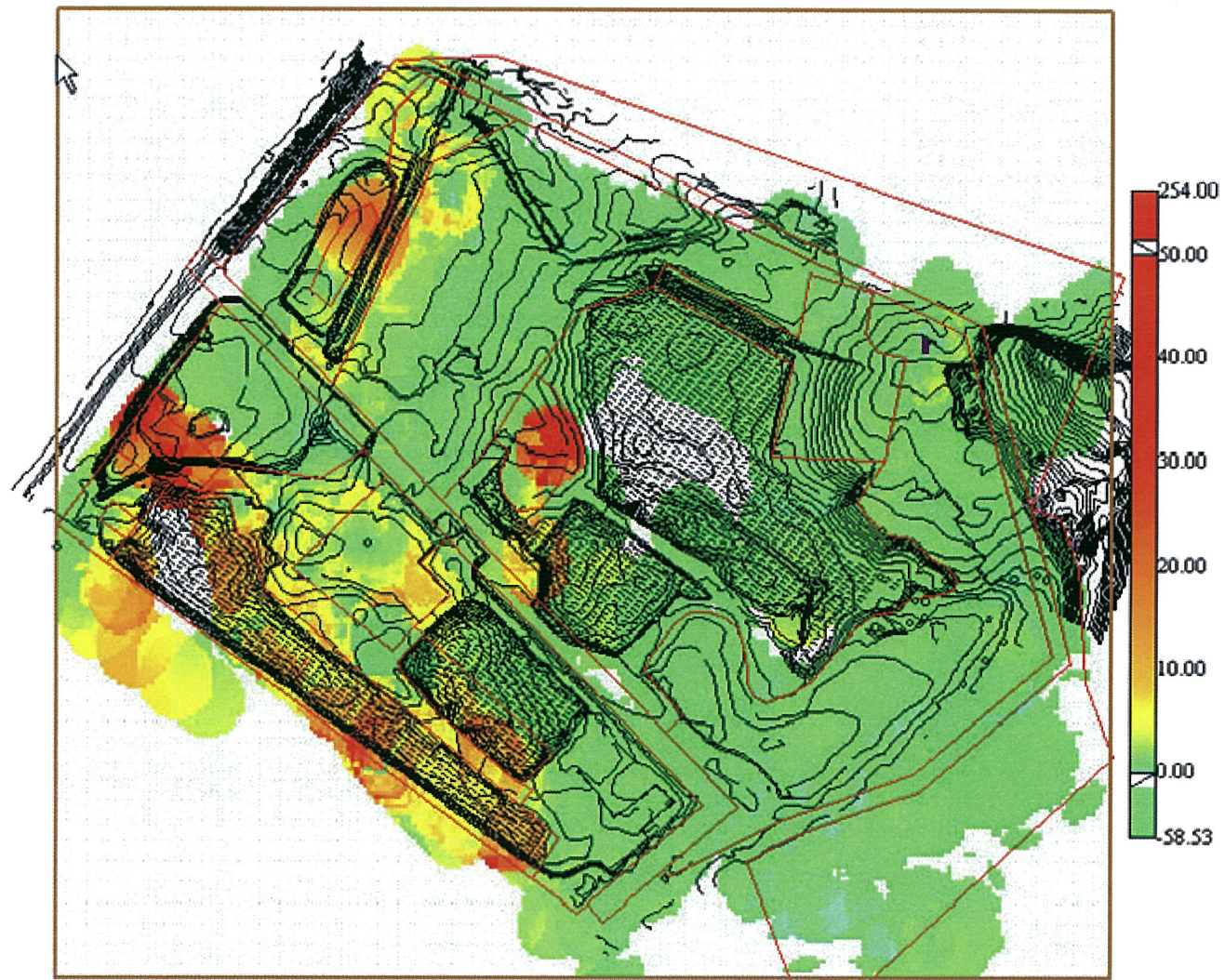


Figure 5. NFS North Site, 4-5 ft.

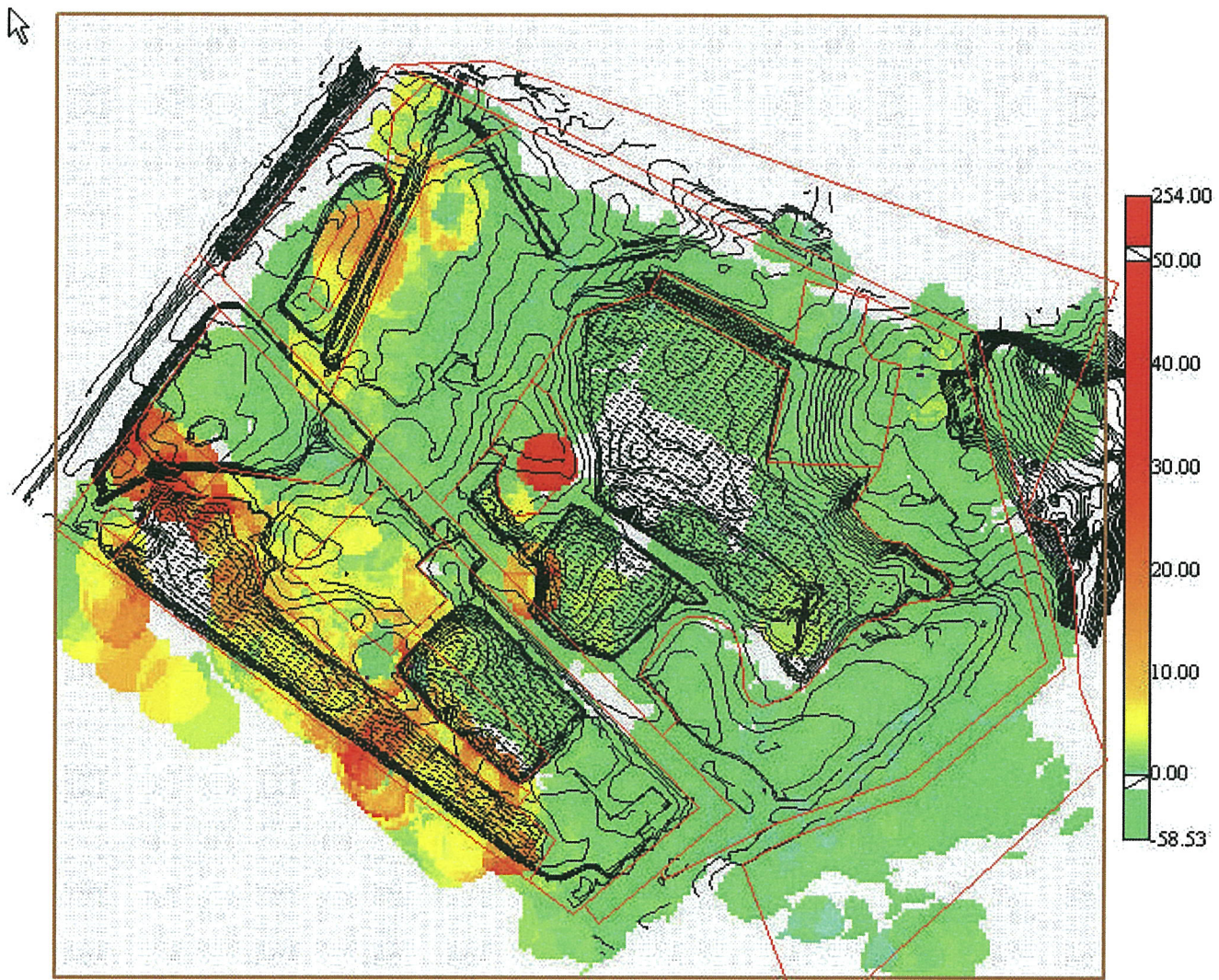


Figure 6. NFS North Site, 5-6 ft.

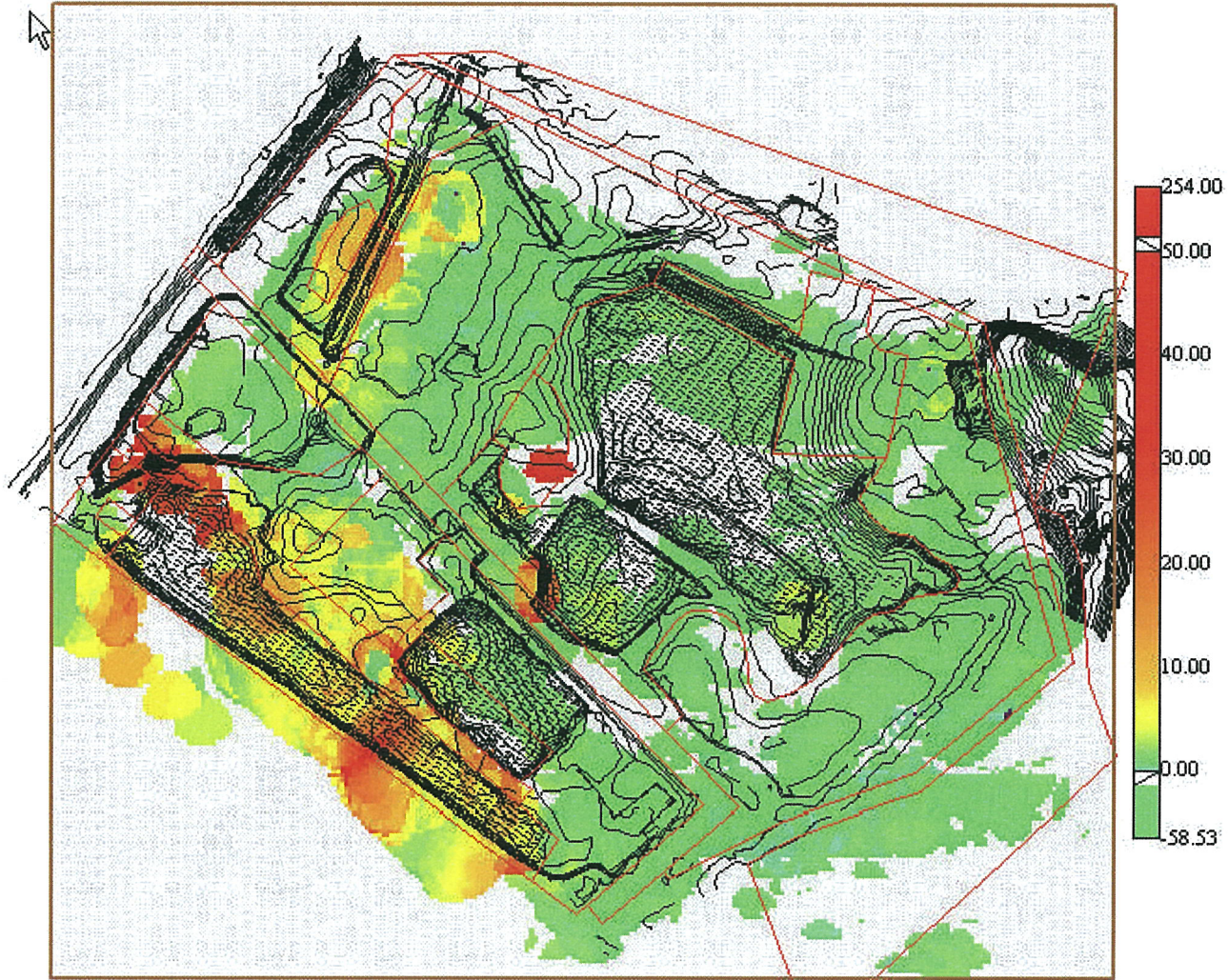


Figure 7. NFS North Site, 6-7 ft.

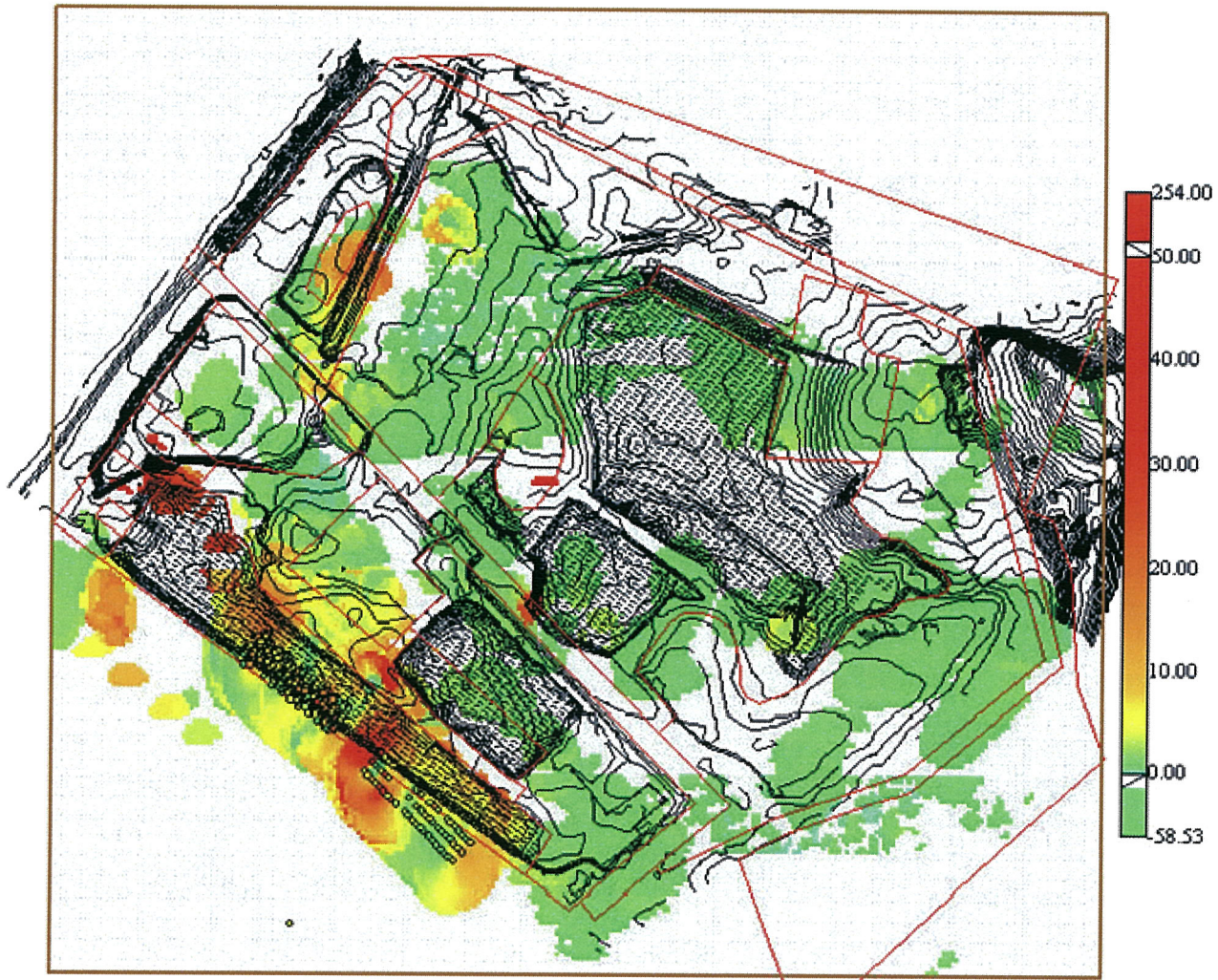


Figure 8. NFS North Site, 7-8 ft.

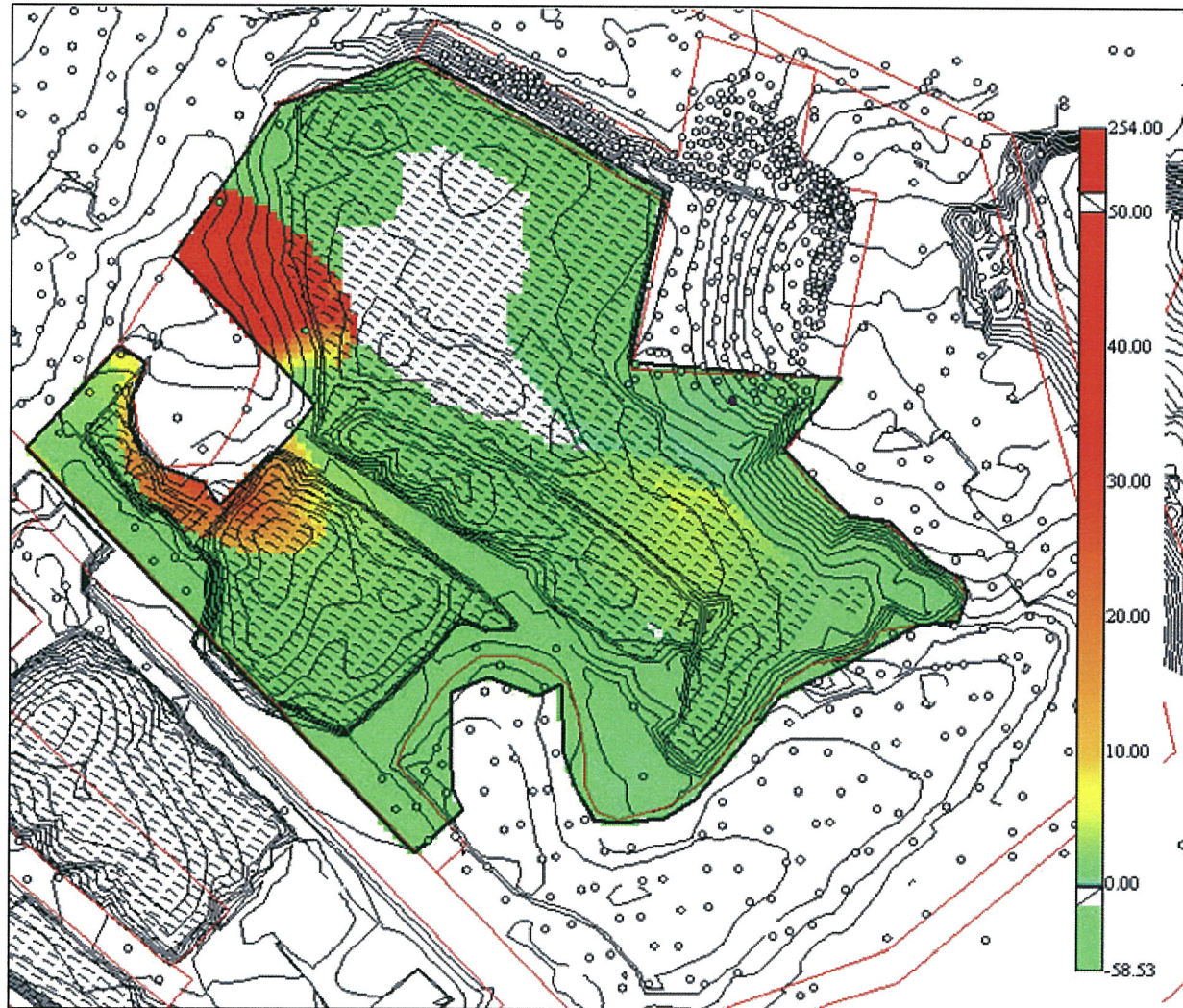


Figure 1. Survey Unit 4, 0-1 ft.

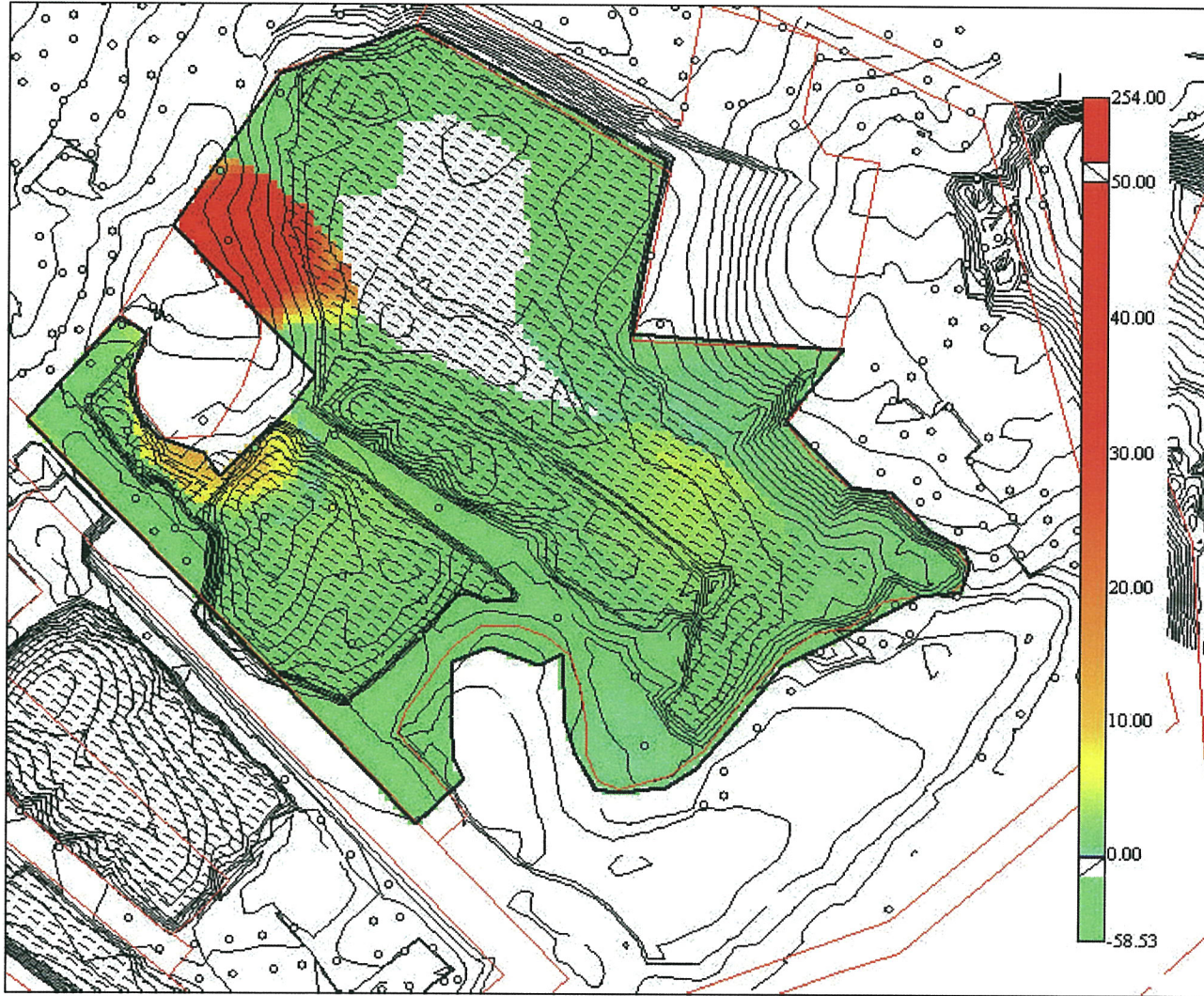


Figure 2. Survey Unit 4, 1-2 ft.

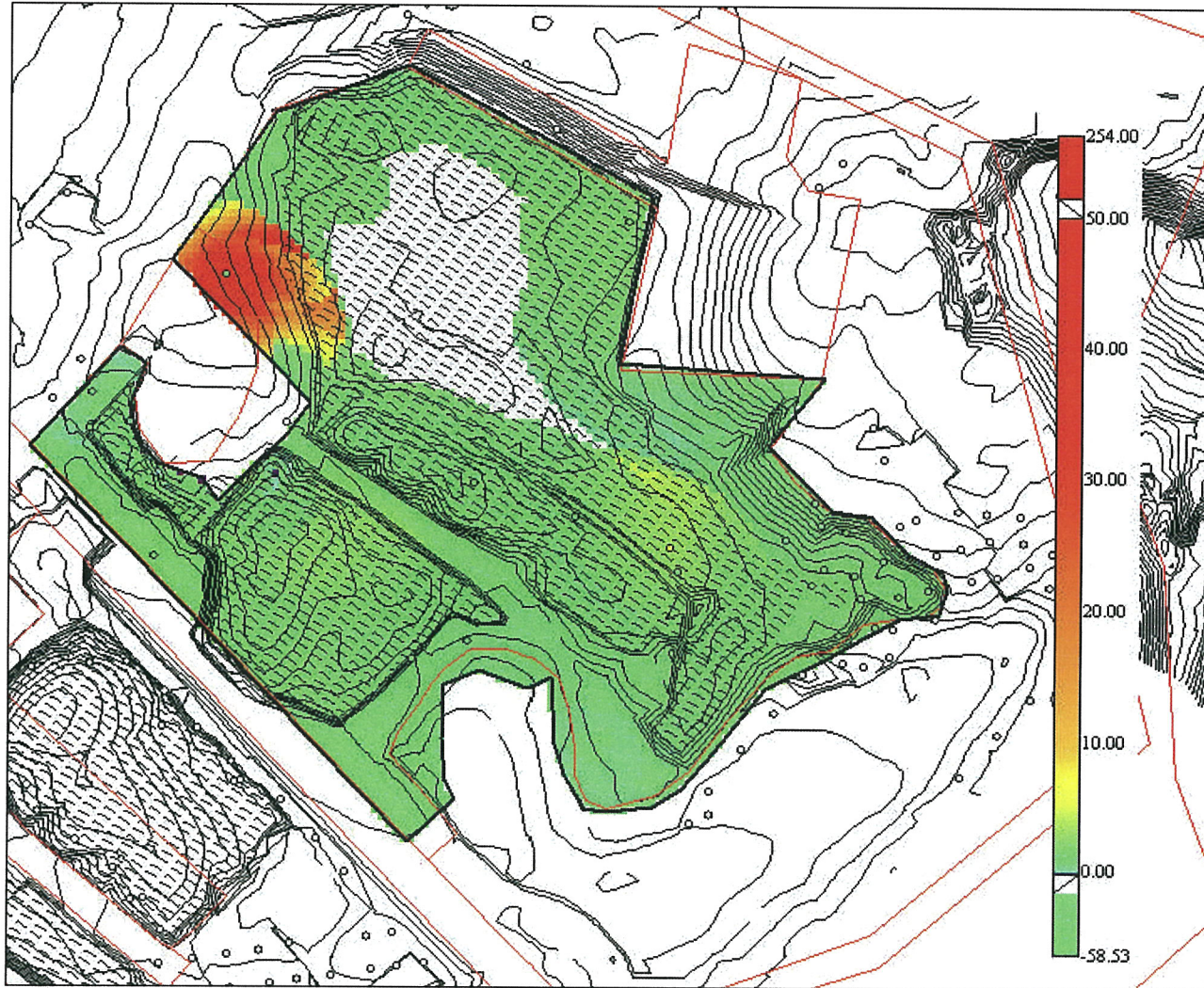


Figure 3. Survey Unit 4, 2-3 ft.

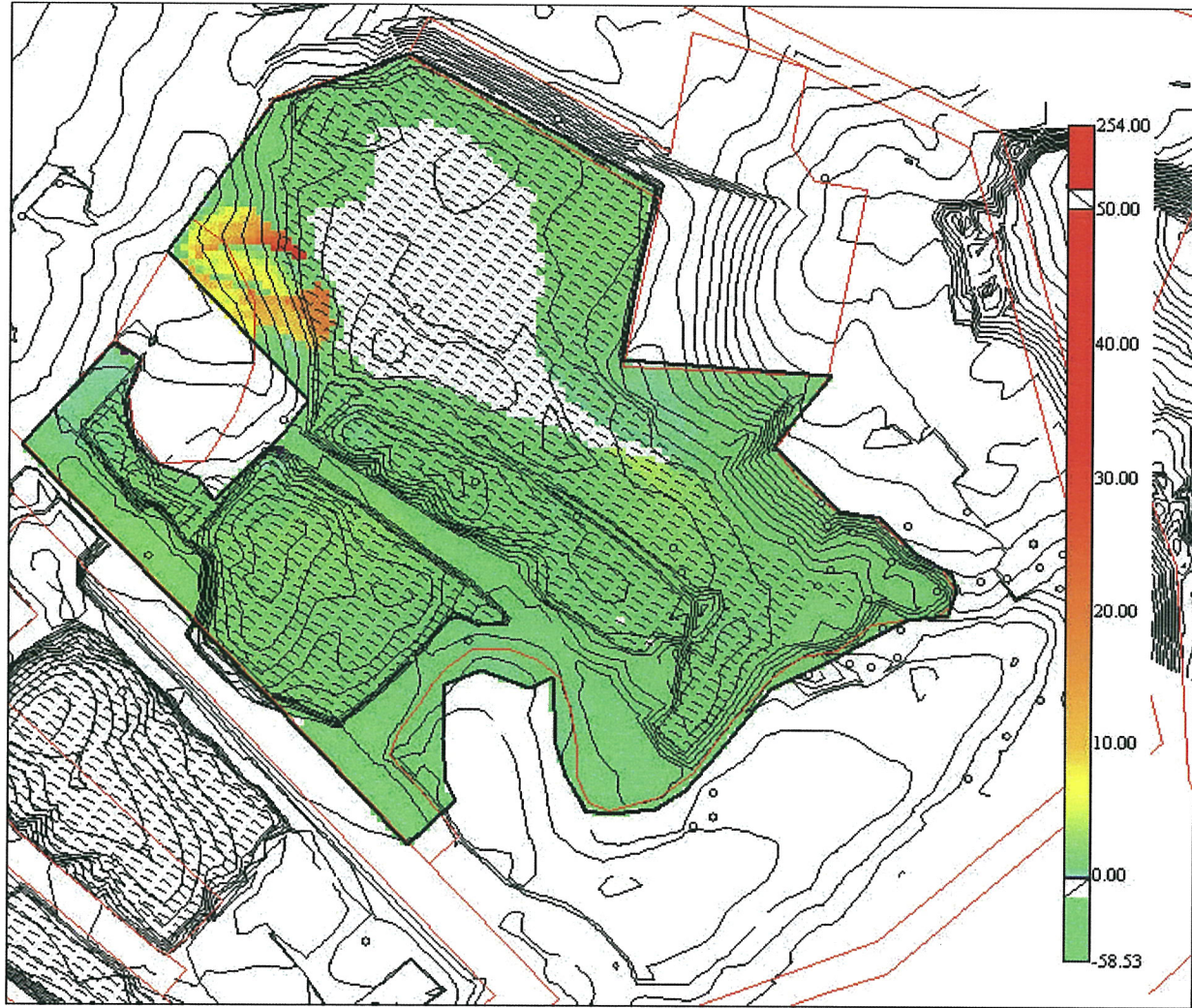


Figure 4. Survey Unit 4, 3-4 ft.

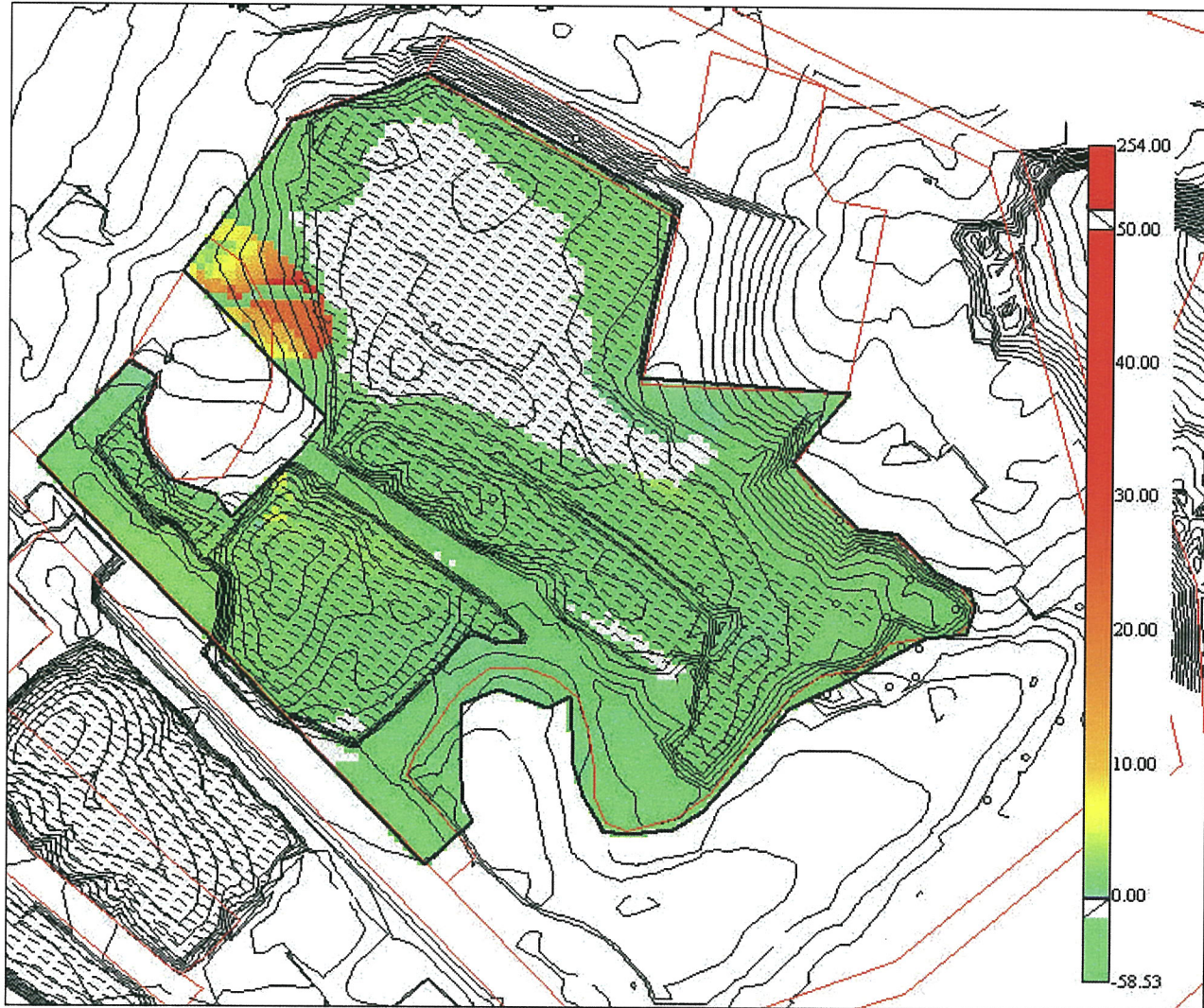


Figure 5. Survey Unit 4, 4-5 ft.

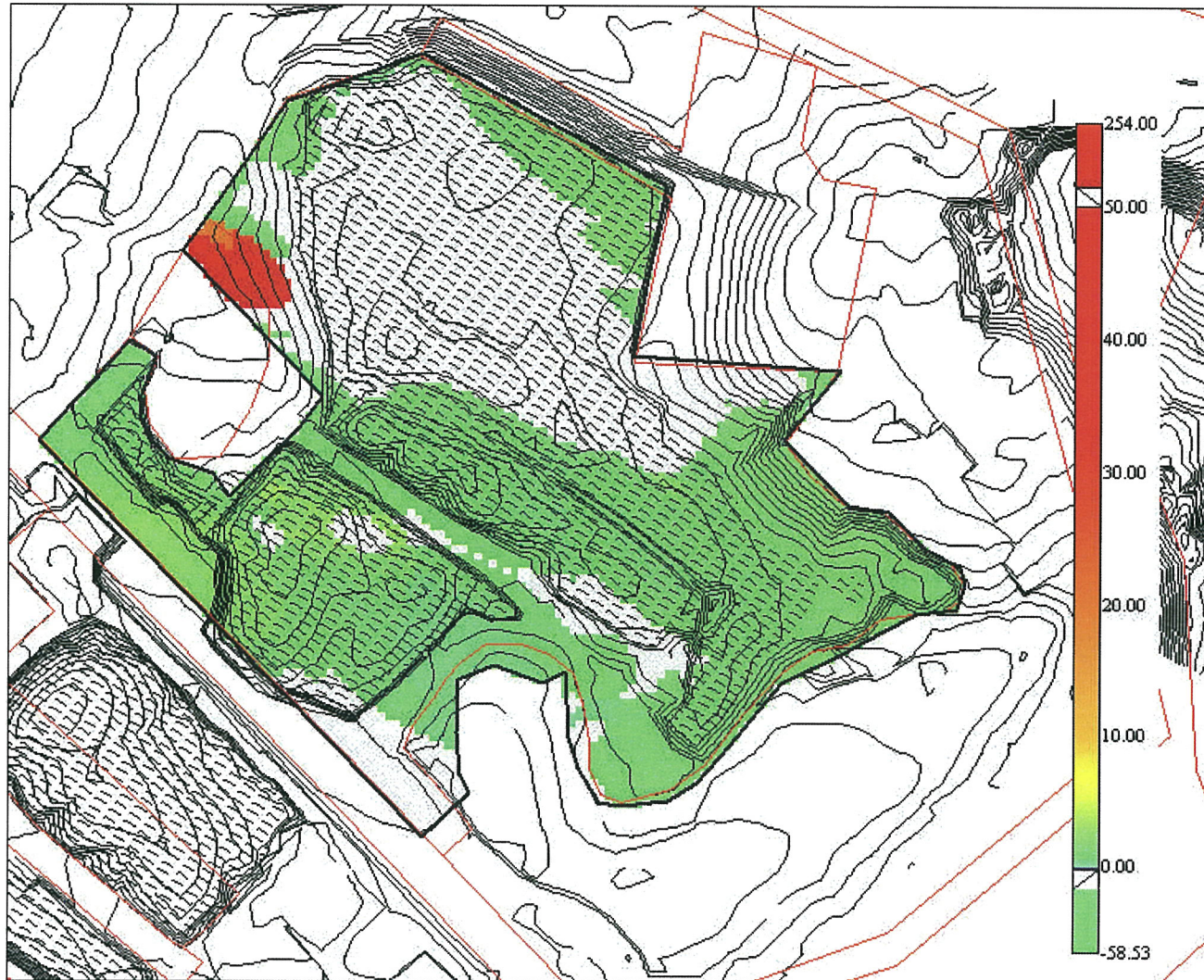


Figure 6. Survey Unit 4, 5-6 ft.

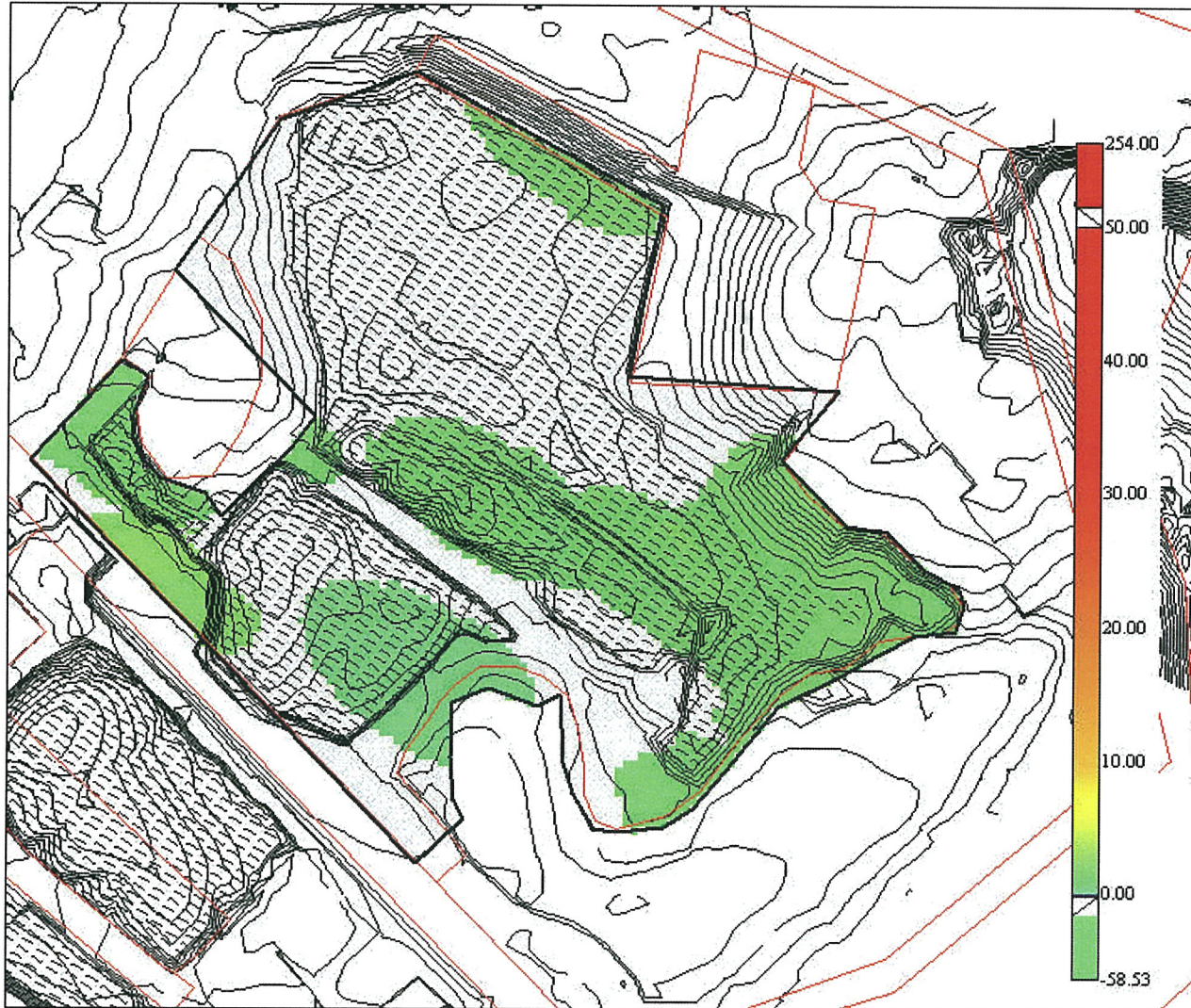


Figure 7. Survey Unit 4, 6-7 ft.

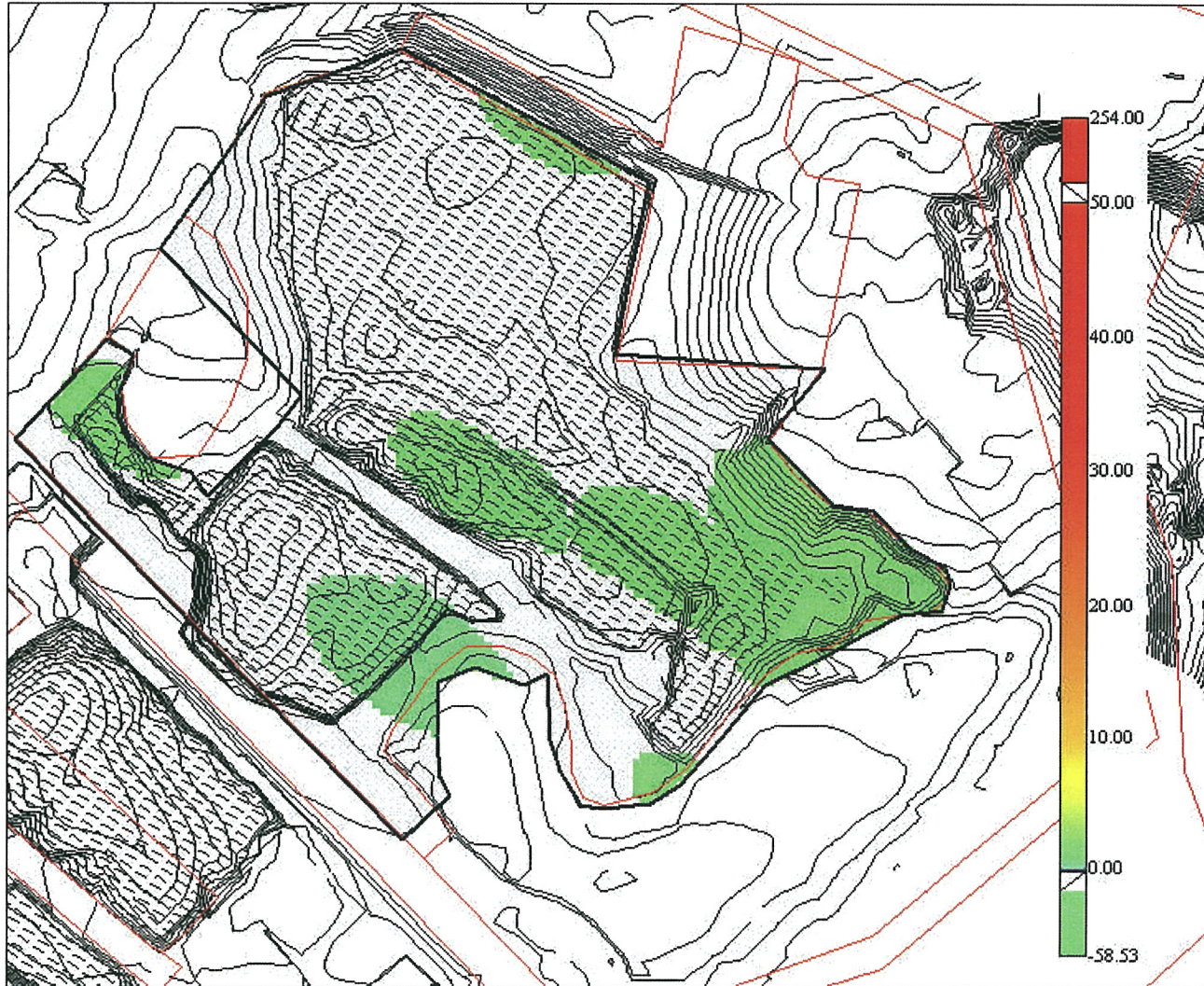


Figure 8. Survey Unit 4, 7-8 ft.