

# ANDERSON ENGINEERING, INC



E M P L O Y E E O W N E D

September 21, 2007

**UNITED STATES NUCLEAR REGULATORY COMMISSION  
REGION III**  
2443 Warrenville Road, Suite 210  
Lisle, Illinois 60532-4352

Att'n: Loren J. Hueter  
1-630-829-9829  
Materials Licensing Branch

Re: License No. 24-20063-01, Request For Amendment No. 16  
Expiration Date: March 31, 2012  
Docket No. 030-17919

As of October 12, 2007, our company needs to have one (1) previously declared storage location deleted, namely:

501 E. 15<sup>th</sup> Street, Suite 100  
Joplin, Missouri 64804

The following units were stored at this facility:

Troxler Model No. 3411-B, Serial No. 15657  
Campbell Pacific Model No. MC-1, Serial No. M11043706  
Campbell Pacific Model No. MC-3, Serial No. M38098472  
Campbell Pacific Model No. MC-1-DR, Serial No. MD01205992

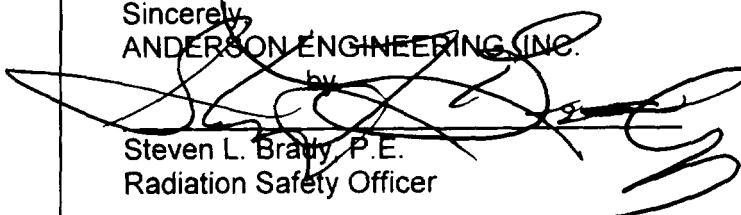
A current Sealed Source Leak Test Analysis Report for each of these units is enclosed.

On October 12, 2007, we request that one (1) additional location be added to our materials license namely:

915 E. 3<sup>rd</sup> Street  
Joplin, Missouri 64801

A copy of the facility design for the new location is enclosed for this Amendment to our license. Should you have any questions regarding this request, please give me a call.

Sincerely,  
ANDERSON ENGINEERING, INC.

by   
Steven L. Brady, P.E.  
Radiation Safety Officer

Enclosures

## SEALED SOURCE LEAK TEST ANALYSIS REPORT

Facility: Anderson Engineering, INC  
Address: 2045 W. Woodland  
Springfield, MO 65807

Telephone: 417-866-2741  
FAX:  
License No.: 24-20063-01

Reference Number:  
Person Submitting Samples: Steven L. Brady, RSO  
Date Samples Collected: June 13, 14 & 26, 2007  
Send Results To: Anderson Engineering, INC.  
**ATTN: Steven L. Brady, RSO**

RSSI SAMPLE NUMBER	CLIENT REFERENCE	RADIO-NUCLIDE	ACTIVITY (mCi)	SOURCE CALIBRATION DATE	DEVICE MANUFACTURER	SOURCE MODEL NUMBER	SOURCE SERIAL NUMBER	RESULTS* ( $\mu\text{Ci}$ )
071352	2	Cs-137 Am-241	-	12/04	Troxler	3411B	15657	< $1.5 \times 10^{-6}$ < $2.4 \times 10^{-6}$
071353	5	Cs-137 Am-241	-	12/04	Campbell Pacific	MC - 1	M11043706	< $1.5 \times 10^{-6}$ < $2.4 \times 10^{-6}$
071354	8	Cs-137 Am-241	-	12/04	Campbell Pacific	MC - 3	M38098472	< $1.5 \times 10^{-6}$ < $2.4 \times 10^{-6}$

Analysis authorized by license No. IL-01429-01. Analysis approved by the Canadian Nuclear Safety Commission, meeting the criteria and requirements of R-116. Analysis instrument: Nuclear-Chicago Spectro Shield 1152  $\alpha/\beta$  counter. Serial number 28458. Calibrated February 5, 2007. Measuring time = 5 minutes. Alpha background = 0.26 cpm. Beta/Gamma background = 3.42 cpm.

Most regulatory agencies consider a source to be leaking if a leak test indicates the presence of more than  $0.005 \mu\text{Ci}$  ( $5 \times 10^{-3} \mu\text{Ci}$ ) of removable contamination. Sources for which the results indicate the presence of  $5 \times 10^{-4} \mu\text{Ci}$  or more of removable activity should be investigated.

\* < followed by a number indicates the activity is below the limit of detection.

A highlighted result exceeds regulatory limits and was reported by telephone to the person submitting the sample and/or \_\_\_\_\_ on \_\_\_\_\_.



## SEALED SOURCE LEAK TEST ANALYSIS REPORT

Facility: Anderson Engineering, INC  
Address: 2045 W. Woodland  
Springfield, MO 65807

Reference Number:  
Person Submitting Samples: Steven L. Brady, RSO  
Date Samples Collected: June 13, 14 & 26, 2007  
Send Results To: Anderson Engineering, INC.  
**ATTN: Steven L. Brady, RSO**

Telephone: 417-866-2741  
FAX:  
License No.: 24-20063-01

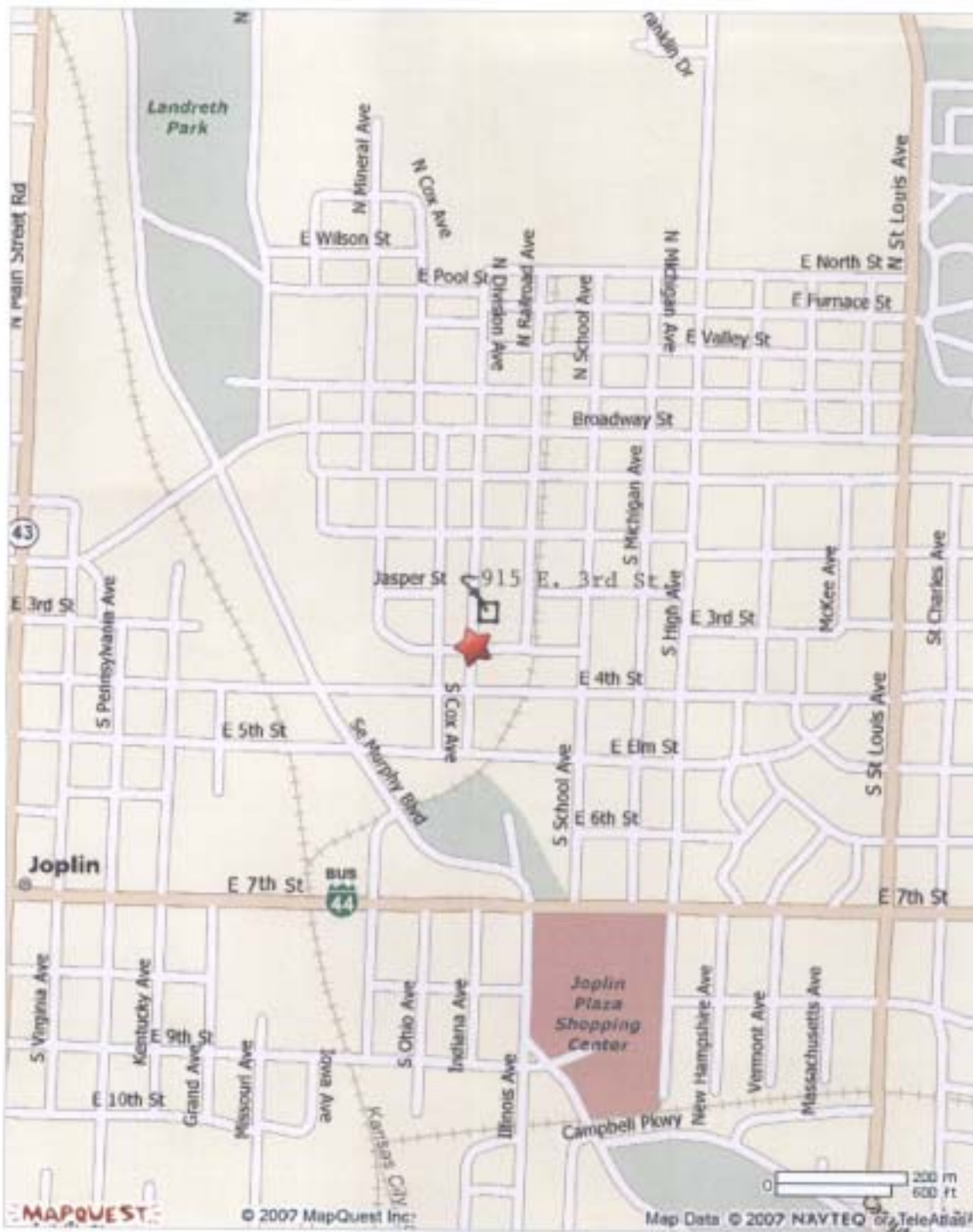
RSSI SAMPLE NUMBER	CLIENT REFERENCE	RADIO-NUCLIDE	ACTIVITY (mCi)	SOURCE CALIBRATION DATE	DEVICE MANUFACTURER	SOURCE MODEL NUMBER	SOURCE SERIAL NUMBER	RESULTS* (μCi)
071355	9	Cs-137 Am-241	-	12/04	Campbell Pacific	MC - 1 - DR	MD01205992	< 1.5 x 10 <sup>-6</sup> < 2.4 x 10 <sup>-6</sup>
071356	1	Cs-137 Am-241	-	03-27-07	Troxler	3411B	12740	< 1.5 x 10 <sup>-6</sup> < 2.4 x 10 <sup>-6</sup>
071357	3	Cs-137 Am-241	-	5-9-2006	Troxler	3411B	16930	< 1.5 x 10 <sup>-6</sup> < 2.4 x 10 <sup>-6</sup>

Analysis authorized by license No. IL-01429-01. Analysis approved by the Canadian Nuclear Safety Commission, meeting the criteria and requirements of R-116. Analysis instrument: Nuclear-Chicago Spectro Shield 1152 α/β counter. Serial number 28458. Calibrated February 5, 2007. Measuring time = 5 minutes. Alpha background = 0.26 cpm. Beta/Gamma background = 3.42 cpm.

Most regulatory agencies consider a source to be leaking if a leak test indicates the presence of more than 0.005 μCi (5 x 10<sup>-3</sup> μCi) of removable contamination. Sources for which the results indicate the presence of 5 x 10<sup>-4</sup> μCi or more of removable activity should be investigated.

\* < followed by a number indicates the activity is below the limit of detection.

A highlighted result exceeds regulatory limits and was reported by telephone to the person submitting the sample and/or \_\_\_\_\_ on \_\_\_\_\_.



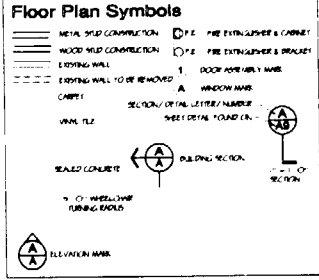
All rights reserved. Use Subject to License/Copyright

This map is informational only. No representation is made or warranty given as to its content. User assumes all risk of use. MapQuest and its suppliers assume no responsibility for any loss or delay resulting from such use.

Wall Types	
<b>INTERIOR PARTITION</b>	1. 5/8" METAL STUD @ 16" O.C. WITH 1/2" Gypsum Board 2. 5/8" METAL STUD @ 16" O.C. WITH 1/2" Gypsum Board AND 1/2" MOISTURE RESISTANT PAPER
<b>EXTERIOR WALL</b>	1. 12" CMU WITH 1/2" Gypsum Board 2. SHELL BLOC WITH ENAMEL FRAME OVERLAY 3. 8" METAL STUD @ 16" O.C. WITH 1/2" Gypsum Board

- Floor Plan Notes**
- CONTRACTOR SHALL VERIFY ALL EXISTING CONDITIONS
  - INTERIOR WALLS METAL STUD CONSTRUCTION
  - SEE ROOM FINISH SCHEDULE FOR FINISHES
  - PREMIER RESIDUE BUILDING - CALL FOR CODES ALL EXISTING PARTITIONS MEETING ALL CODES ETC. COPY WITH OWNER'S REPRESENTATIVE OF ANY BUILDING REQUIREMENTS OR OWNER INSTALLED ITEMS
  - FURNITURE AND WINDOW PARTS SHALL BE CALLED OUT IN CONTRACT DETAILS OTHERWISE NOTED AS ALLOWING
  - WALL DIMENSIONS ARE NOMINAL
  - ACTUAL DIMENSION 4" (1) FOR 5/8" METAL STUD @ 16" O.C. FLOOR EACH SIDE
  - ACTUAL DIMENSION 4" (1) FOR 2.4" WOOD STUD @ 16" O.C. FLOOR EACH SIDE
  - WALLS TO BE DESIGNED BY OWNER

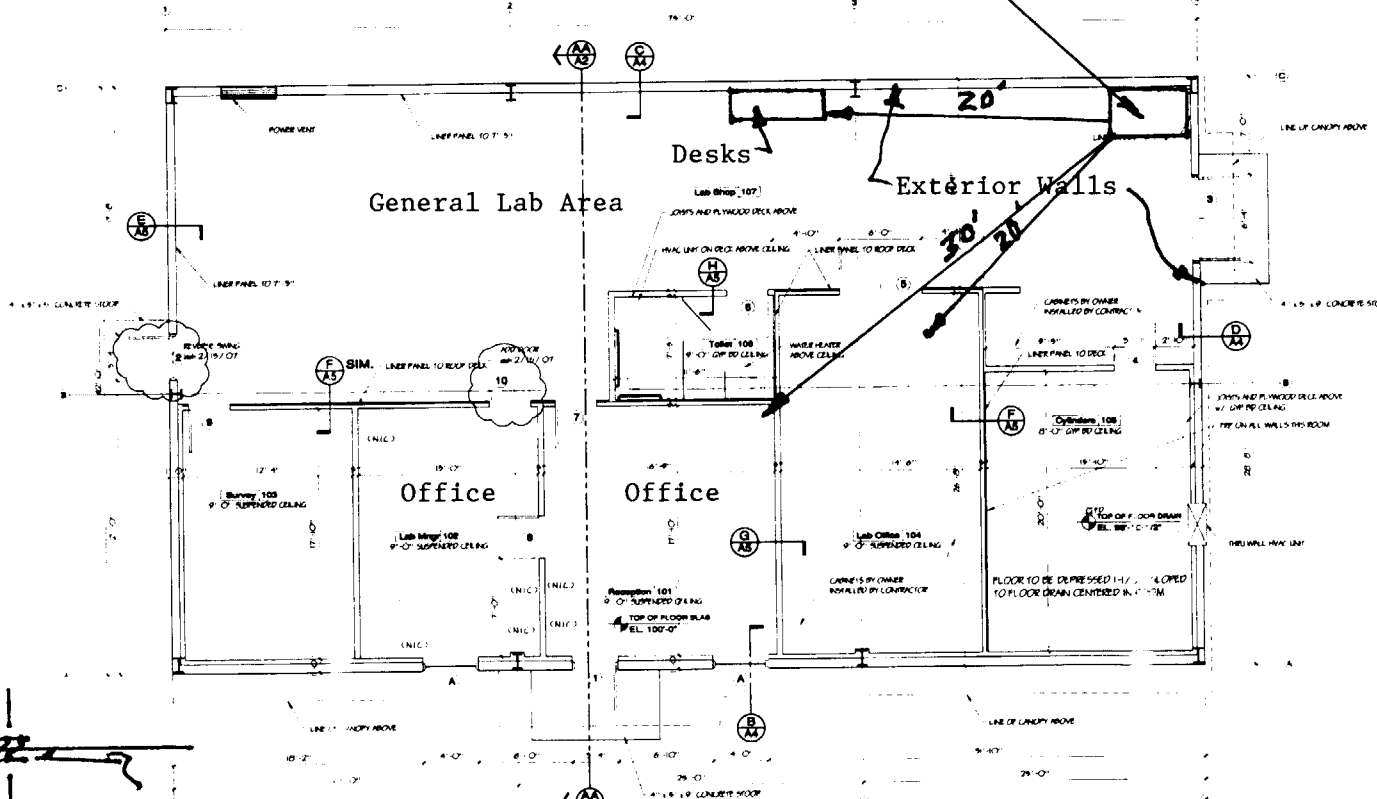
- Floor Plan Abbreviations**
- (P.F.S.) COMPONENT FURNISHED BY THE BUILDING MANUFACTURER (LISTED) (ENIC) NOT IN CONTRACT - FURNISHED AND INSTALLED BY OTHERS  
 F.C. GYPSUM FRAME CORE GYPSUM BOARD  
 E.P.S. 1" POLY EXTERIOR POLYURETHANE FOAM SYSTEM  
 DIMENSIONS TOTAL FINISH WALLS



**Room Finish Schedule**

RM.	Room Name	Flooring	Base	Walls	Ceiling	Ceiling Height	Other Notes
101	WAITING	CARPET	4" VINYL BASE	PAINTED GYPSUM	2.2' SUSPENDED	9'-0"	
102	LAB MANAGER	SEALD CONC.	4" VINYL BASE	PAINTED GYPSUM	2.2' SUSPENDED	9'-0"	
103	SURVEY	SEALD CONC.	4" VINYL BASE	PAINTED GYPSUM	2.2' SUSPENDED	9'-0"	
104	LAB OFFICE	SEALD CONC.	4" VINYL BASE	PAINTED GYPSUM	2.2' SUSPENDED	9'-0"	
106	CHANGERS	SEALD CONC.	4" VINYL BASE	PAINTED GYPSUM	2.2' SUSPENDED	9'-0"	
108	TOILET	SEALD CONC.	4" VINYL BASE	PAINTED GYPSUM	2.2' SUSPENDED	9'-0"	
107	LAB SHOP	SEALD CONC.	NONE	PAINTED GYPSUM	EXPLODED SHELLS	VARIES	

ADDENDUM #1 2-15-07



ANDERSON ENGINEERING, INC.  
 915 E. 3RD STREET  
 JOPLIN, MO 64801

Floor Plan DIVISION ST. (VACATED)  
 SCALE: 1/8" = 1'-0"

ADDEND JM #1 2-15-07

Revisions By

Revisions	By

2.14.07 0.0000m ash  
 Last Modification  
 DATE 02.14.07

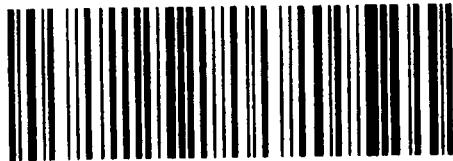
Anderson Engineering, Inc.  
 915 E. 3rd Street  
 Joplin, MO 64801  
 Tel: 417.781.0882  
 Fax: 417.781.0884  
 www.andersoneng.com

Hunter & Millard  
 Architects, Inc.

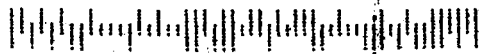
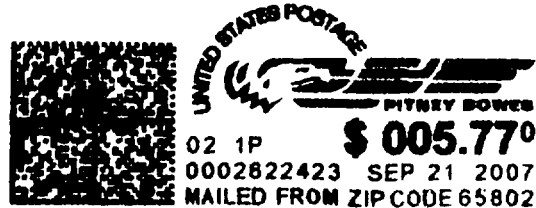
A Project for:  
 Anderson Investment Group Two, LLC  
 Materials Testing Facility  
 915 East 3rd St., Joplin, Mo.

Scale: 1/8" = 1'-0"  
 February 2007  
 548  
 Floor Plan  
 A1

**CERTIFIED MAIL**



7007 0220 0003 6303 2582



**ANDERSON ENGINEERING, INC** 

2045 W. WOODLAND • SPRINGFIELD, MO 65807-5913

UNITED STATES NUCLEAR REGULATORY  
COMMISSION

REGION III  
2443 WARRENVILLE ROAD, SUITE 210  
LISLE, IL 60532-4352

FIRST CLASS MAIL