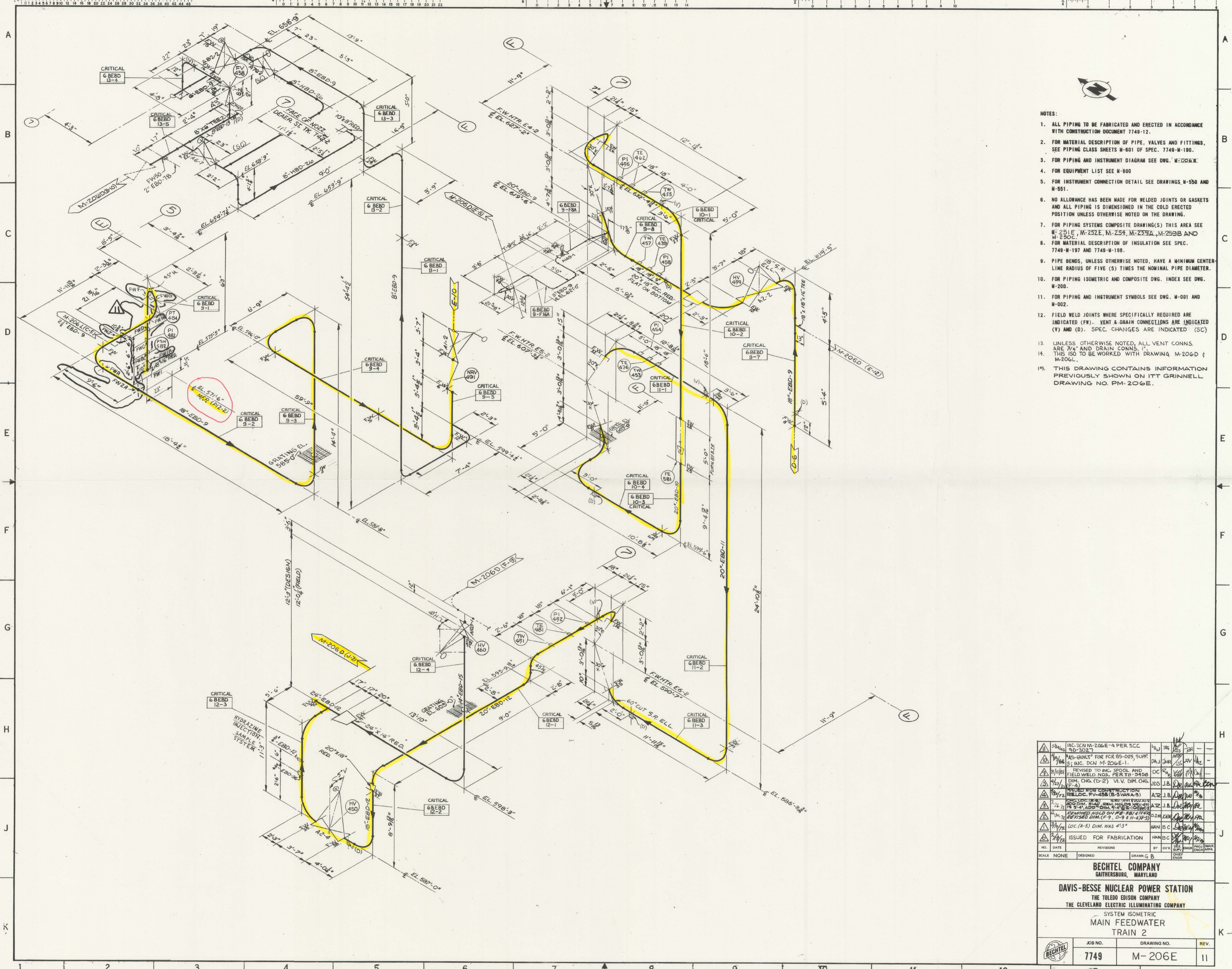


7749 M-206E
SYSTEM ISO
MAIN FEEDWATER
TRAIN 2



- NOTES:
1. ALL PIPING TO BE FABRICATED AND ERECTED IN ACCORDANCE WITH CONSTRUCTION DOCUMENT 7749-12.
 2. FOR MATERIAL DESCRIPTION OF PIPE, VALVES AND FITTINGS, SEE PIPING CLASS SHEETS M-601 OF SPEC. 7749-M-190.
 3. FOR PIPING AND INSTRUMENT DIAGRAM SEE DWG. M-206E-K.
 4. FOR EQUIPMENT LIST SEE M-900.
 5. FOR INSTRUMENT CONNECTION DETAIL SEE DRAWINGS M-550 AND M-551.
 6. NO ALLOWANCE HAS BEEN MADE FOR WELDED JOINTS OR GASKETS AND ALL PIPING IS DIMENSIONED IN THE COLD ERECTED POSITION UNLESS OTHERWISE NOTED ON THE DRAWING.
 7. FOR PIPING SYSTEMS COMPOSITE DRAWING(S) THIS AREA SEE M-251E, M-252E, M-254, M-259A, M-259B AND M-250C.
 8. FOR MATERIAL DESCRIPTION OF INSULATION SEE SPEC. 7749-M-197 AND 7749-M-198.
 9. PIPE BENDS, UNLESS OTHERWISE NOTED, HAVE A MINIMUM CENTER LINE RADIUS OF FIVE (5) TIMES THE NOMINAL PIPE DIAMETER.
 10. FOR PIPING ISOMETRIC AND COMPOSITE DWG. INDEX SEE DWG. M-200.
 11. FOR PIPING AND INSTRUMENT SYMBOLS SEE DWG. M-001 AND M-002.
 12. FIELD WELD JOINTS WHERE SPECIFICALLY REQUIRED ARE INDICATED (FW). VENT & DRAIN CONNECTIONS ARE INDICATED (V) AND (D). SPEC. CHANGES ARE INDICATED (SC).
 13. UNLESS OTHERWISE NOTED, ALL VENT CONNS. ARE 3/4" AND DRAIN CONNS. 1". THIS ISO TO BE WORKED WITH DRAWING M-206D & M-206L.
 15. THIS DRAWING CONTAINS INFORMATION PREVIOUSLY SHOWN ON ITT GRINNELL DRAWING NO. PM-206E.

NO.	DATE	REVISIONS	BY	CHKD	APP'D	PROJ. ENGR.
1	10/1/72	ISSUED FOR FABRICATION	HAN/BC			
2	10/1/72	LOC. (A-5) DIM. WAS 4'3"	HAN/BC			
3	10/1/72	REMOVED HOLD ON RE-881 ATTACH	HAN/BC			
4	10/1/72	RE-11580 DIM. (P. 9, D-9 & H-4-P-3)	HAN/BC			
5	10/1/72	RELOC. FV-458 (B-SWANA'S)	ATZ/J.B.			
6	10/1/72	REVISIONS TO INC. SPOOL AND FIELD WELD NOS. PER TB-5458 (P. 4)	JDS/J.B.			
7	10/1/72	DIM. CHG. (D-2) VLV. DIM. CHG.	JDS/J.B.			
8	10/1/72	REVISED FOR CONSTRUCTION	JDS/J.B.			
9	10/1/72	REVISED TO INC. SPOOL AND FIELD WELD NOS. PER TB-5458 (P. 4)	DC/K.S.			
10	10/1/72	AS-BUILT FOR FCR 65-025, SUPP. 3; INC. DCN M-206E-1.	DAJ/J.W.			
11	10/1/72	INC. DCN M-206E-1.	DAJ/J.W.			
12	10/1/72	INC. DCN M-206E-4 PER SEC. 90-3027	DAJ/J.W.			

BECHTEL COMPANY
GAITHERSBURG, MARYLAND

DAVIS-BESSE NUCLEAR POWER STATION
THE TOLEDO EDISON COMPANY
THE CLEVELAND ELECTRIC ILLUMINATING COMPANY

SYSTEM ISOMETRIC
MAIN FEEDWATER
TRAIN 2

JOB NO.	DRAWING NO.	REV.
7749	M-206E	11

D-02