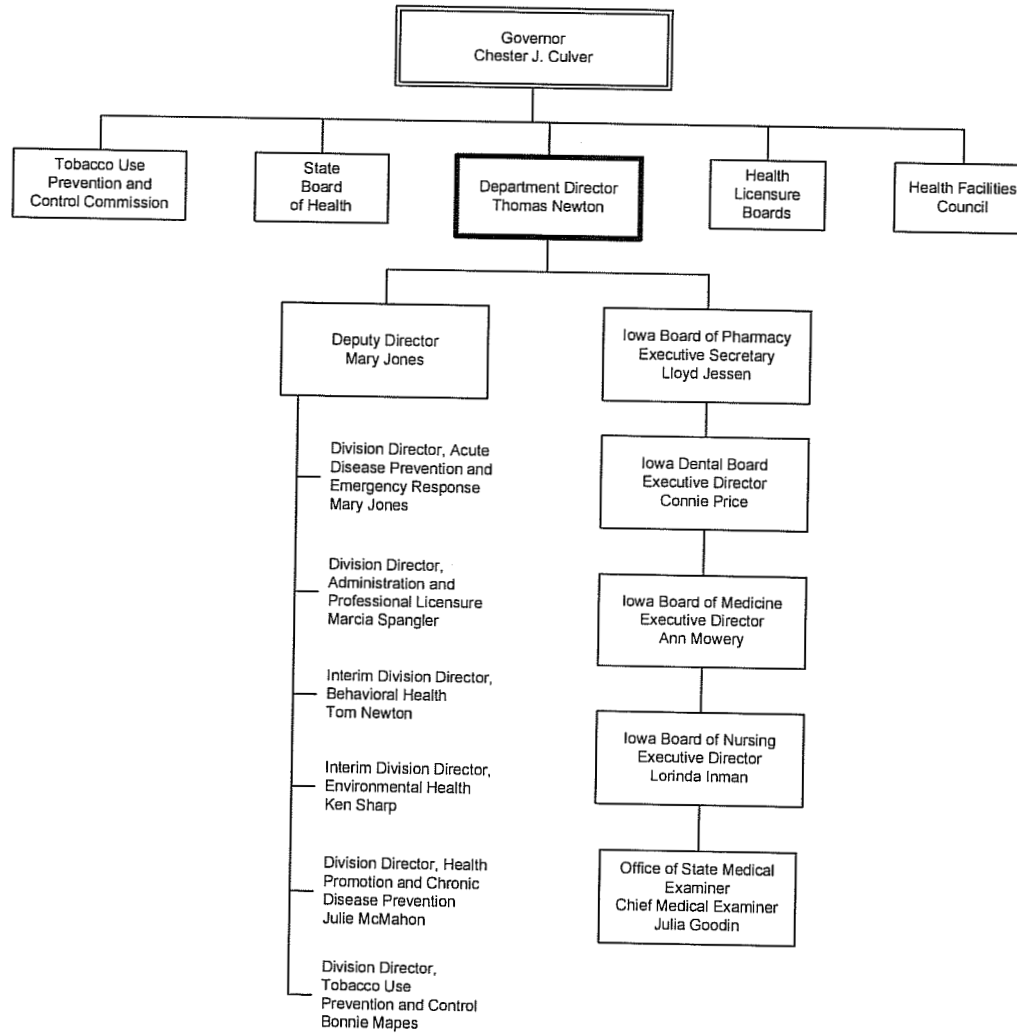
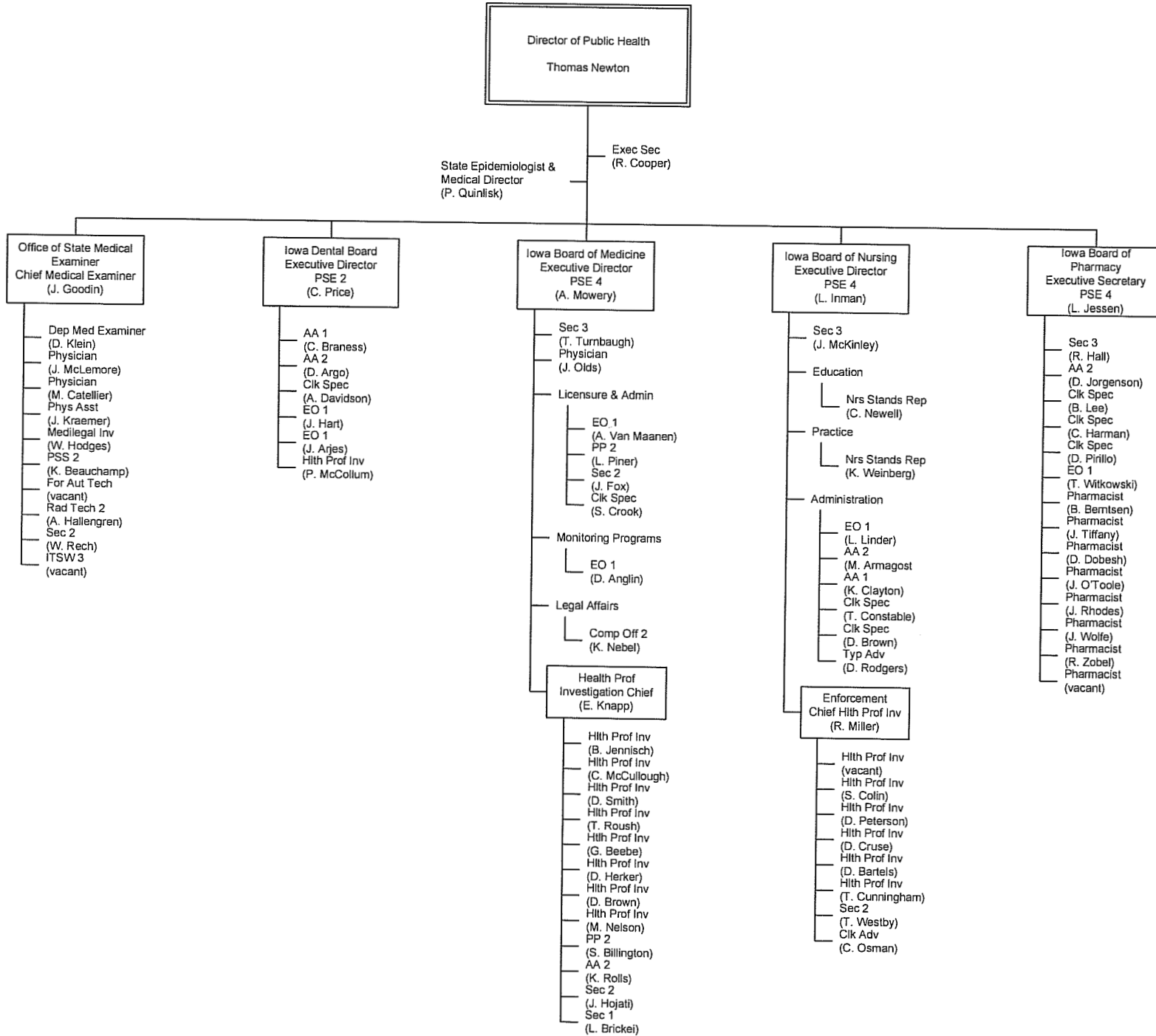


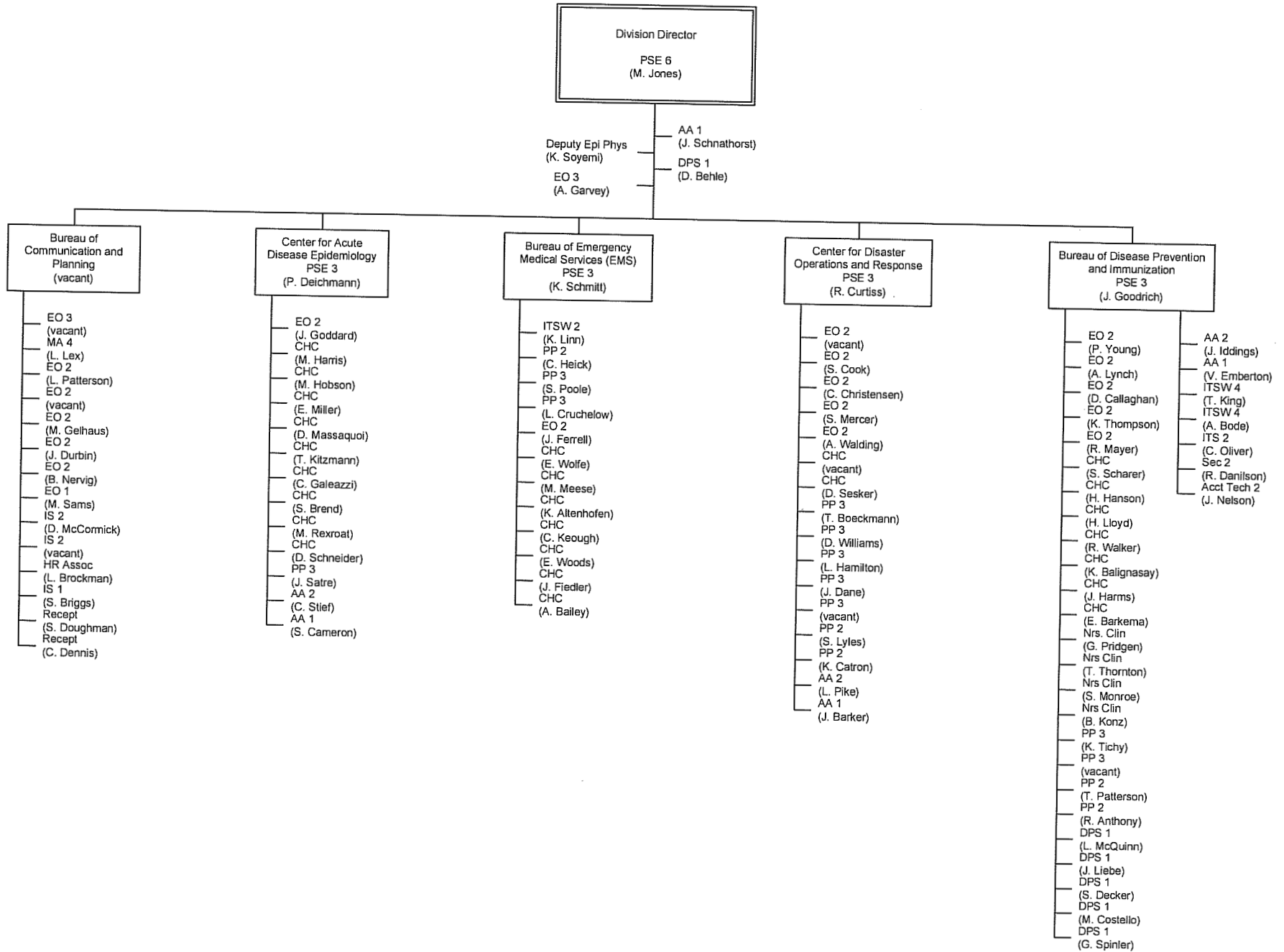
IOWA DEPARTMENT OF PUBLIC HEALTH



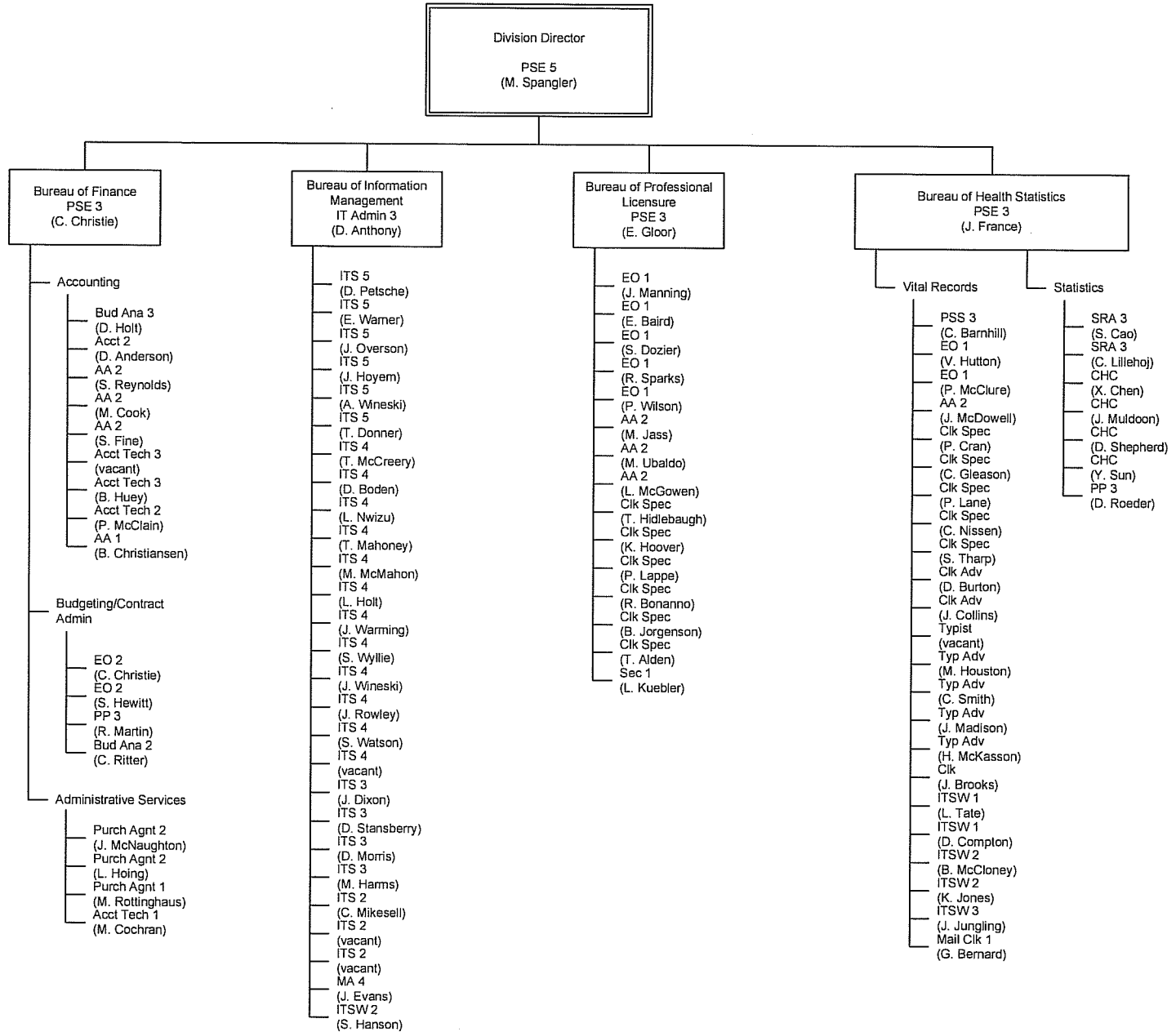
DIRECTOR'S OFFICE



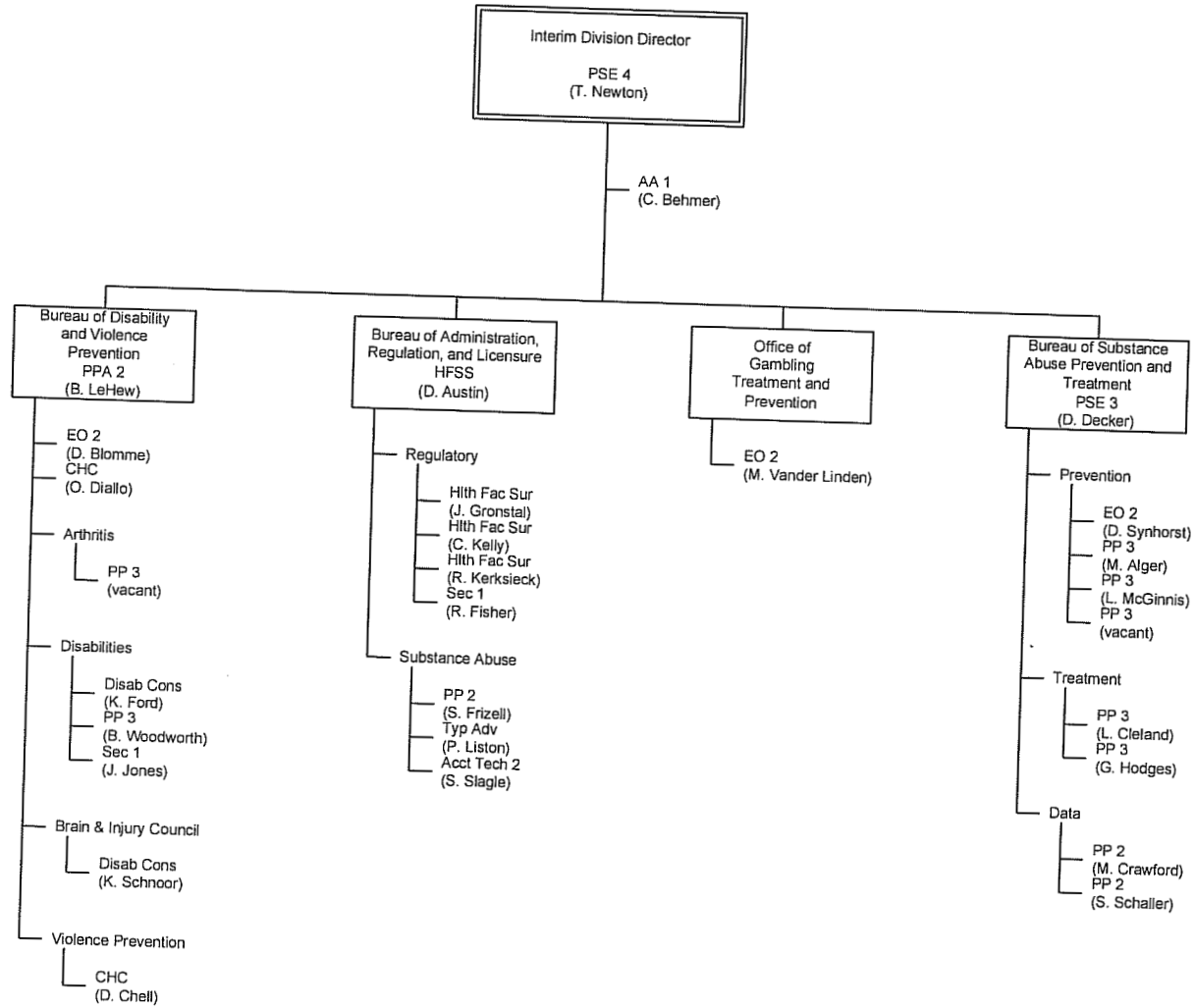
DIVISION OF ACUTE DISEASE PREVENTION AND EMERGENCY RESPONSE



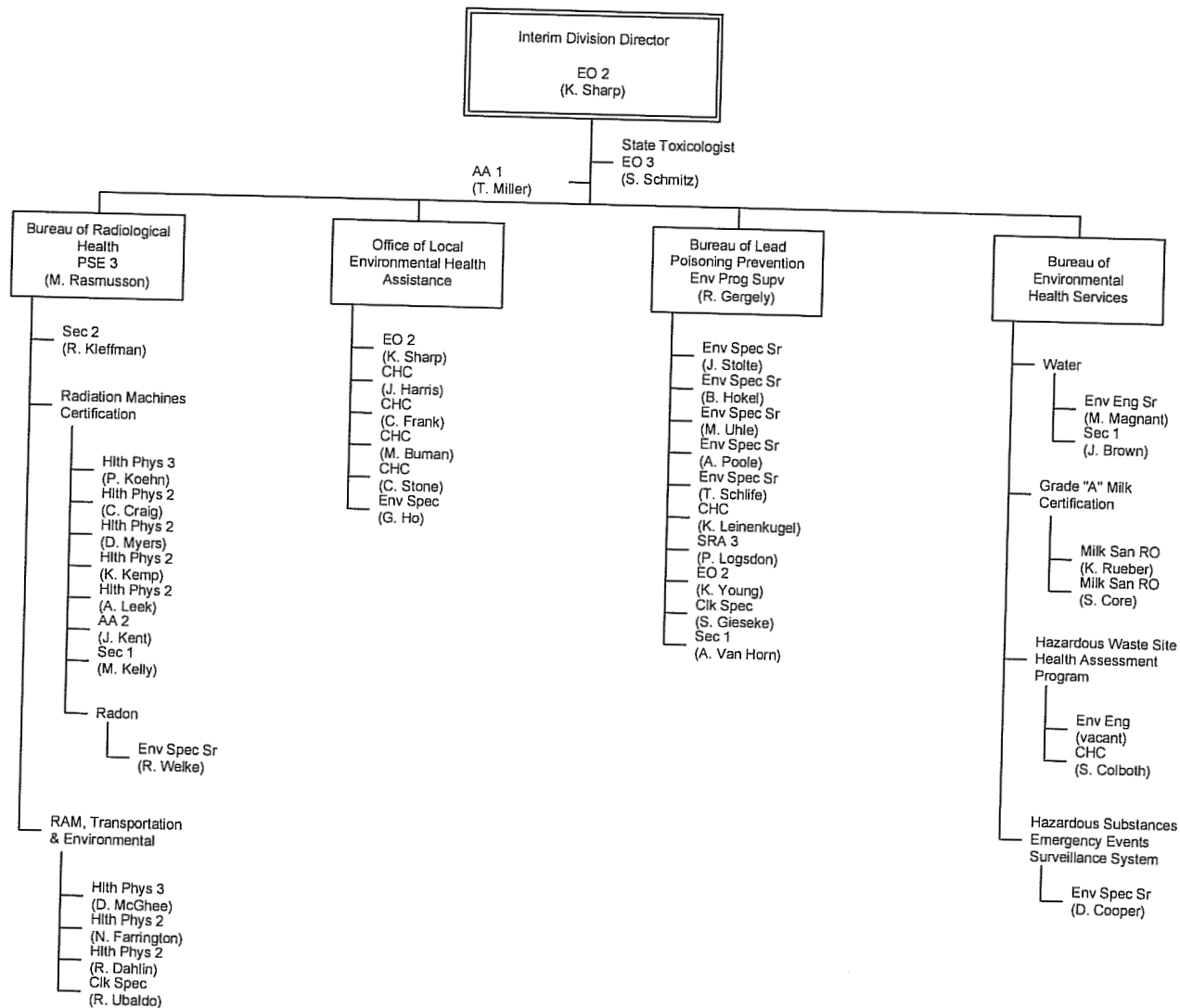
DIVISION OF ADMINISTRATION AND PROFESSIONAL LICENSURE



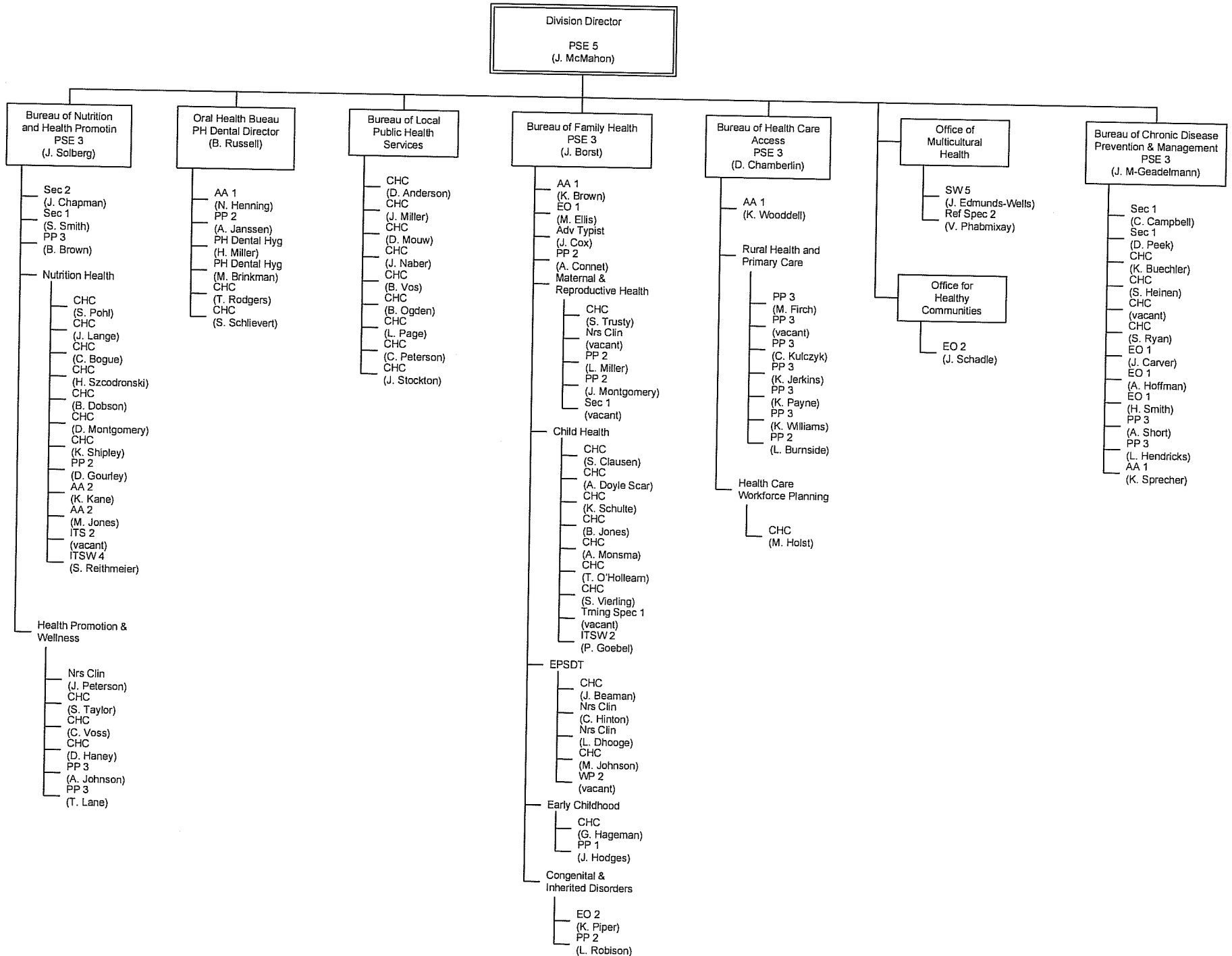
DIVISION OF BEHAVIORAL HEALTH



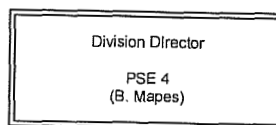
DIVISION OF ENVIRONMENTAL HEALTH



DIVISION OF HEALTH PROMOTION AND CHRONIC DISEASE PREVENTION



DIVISION OF TOBACCO USE PREVENTION AND CONTROL



- AA 1
(D. Weiser)
- EO 2
(A. Swanson)
- CHC
(S. Prior)
- CHC
(D. Owens)
- CHC
(M. O'Rourke)
- CHC
(J. Quigley)
- (R. Semelroth)
- PP 3
- (G. Buttermore)
- AA 2
(S. Stursma)