

R 78 W

R 77 W

R 76 W

T 46 N

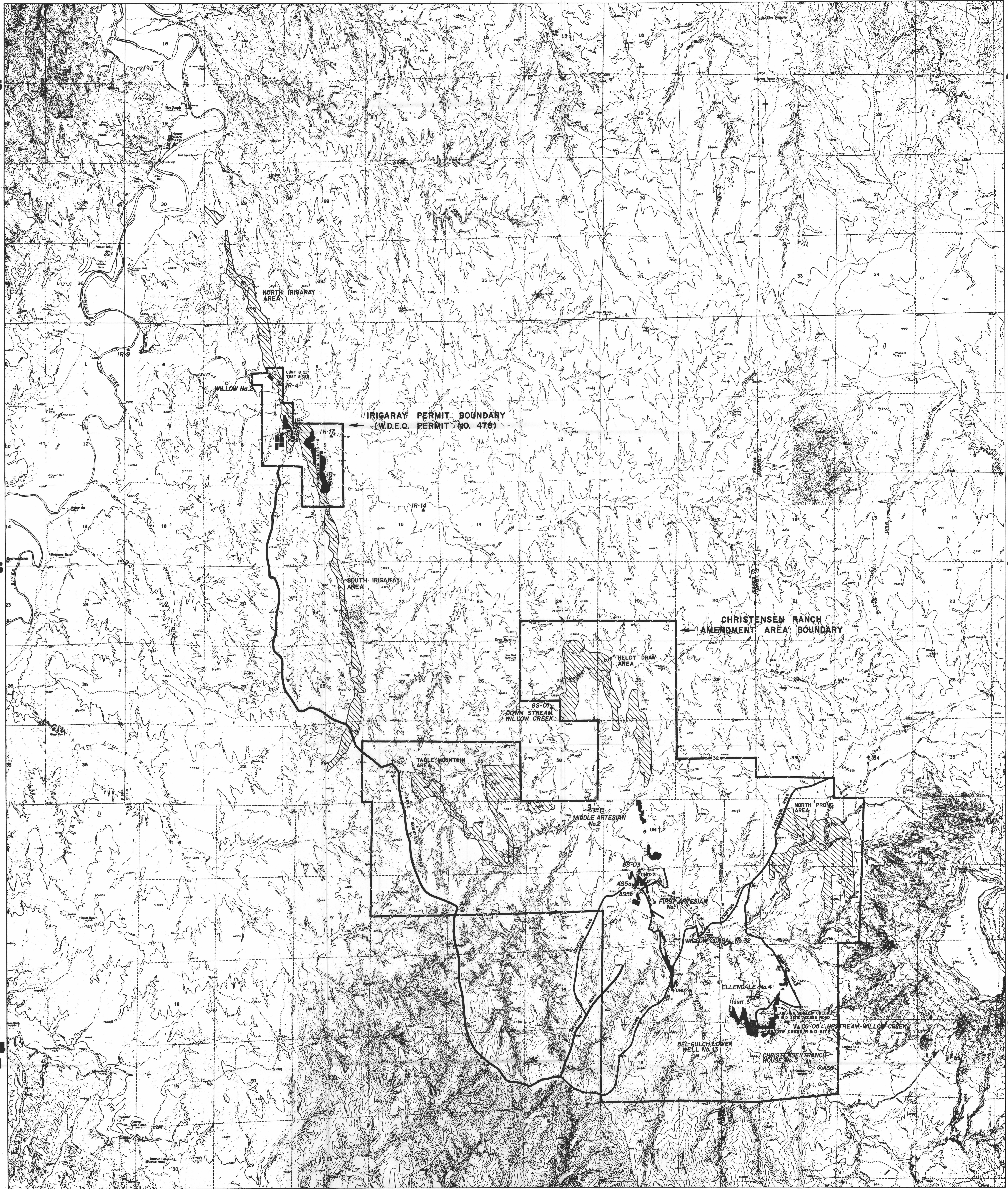
T 46 N

T 45 N

T 45 N

T 44 N

T 44 N

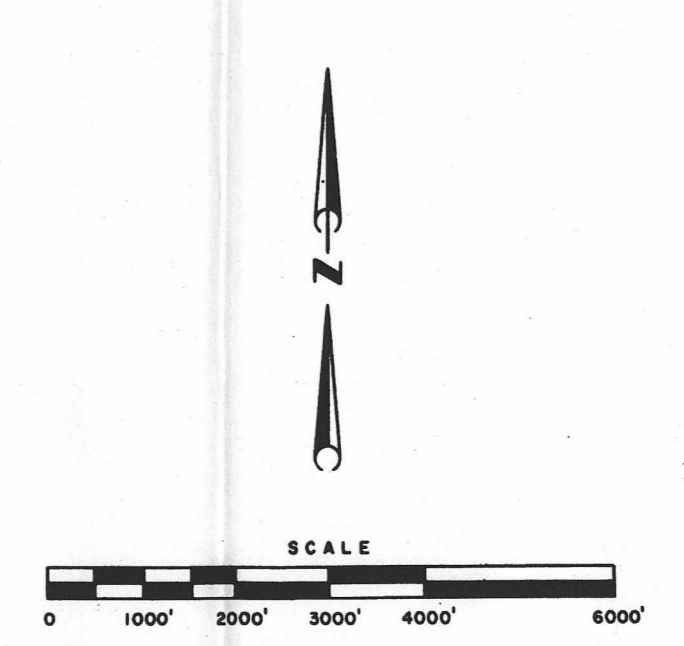


R 78 W

R 77 W

R 76 W

- LEGEND**
- WELL FIELD ACCESS ROADS
 - HAUL ROAD - EXISTING ROAD
 - WELLFIELD AREA
 - DRAINAGE CULVERT LOCATION AND NUMBER
 - TOPSOIL STOCKPILE LOCATION (SIZE APPROXIMATE)
 - EVAPORATION PONDS
 - FUTURE AREA OF DEVELOPMENT
 - AIR SAMPLE LOCATION (RADON AND PARTICULATE)
 - AIR SAMPLE LOCATION (RADON AND PARTICULATE)
 - VEGETATION SAMPLE LOCATION
 - SOIL SAMPLE LOCATION
 - DIRECT RADIATION MONITOR LOCATION
 - AIR SAMPLE LOCATION (RADON)
 - VEGETATION SAMPLE LOCATION
 - SOIL SAMPLE LOCATION
 - DIRECT RADIATION MONITOR LOCATION
 - STOCK & DOMESTIC WELL SAMPLE LOCATION
 - REGIONAL GROUNDWATER MONITORING
 - UPSTREAM & DOWNSTREAM SURFACE WATER SAMPLE LOCATION



COGEMA Mining, Inc.
 P.O. Box 730 Mills, Wyoming 82644

PROJECT: IRIGARAY & CHRISTENSEN RANCH
 JOHNSON & CAMPBELL COUNTIES, WYOMING

TITLE: Irigaray and Christensen Ranch Environmental Monitoring Station Locations

DATE BY: S.L. WIDERS SCALE: FIGURE NO.: 5.5
 DRAFTED BY: SMTH DATE: 8/26/97