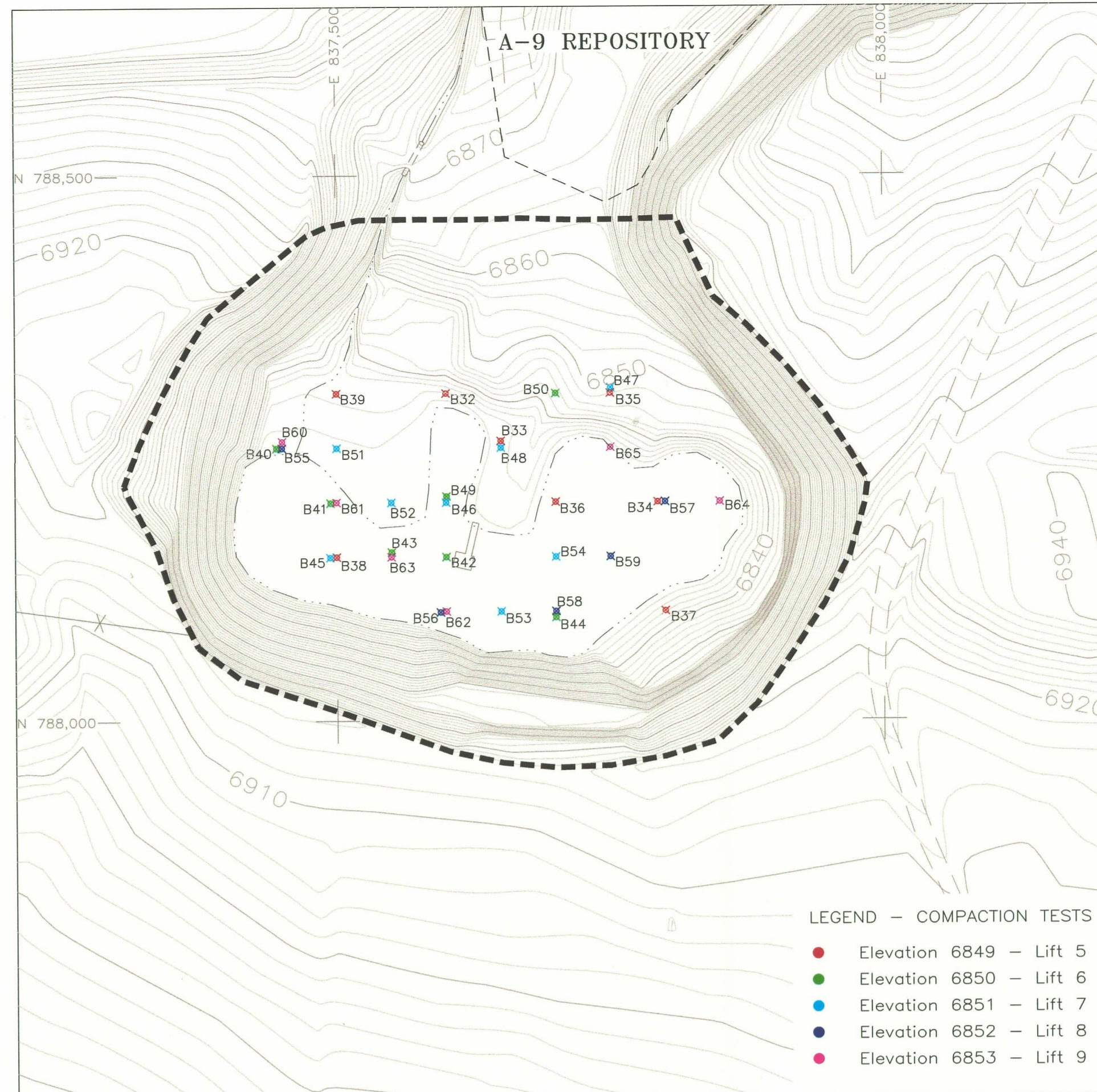
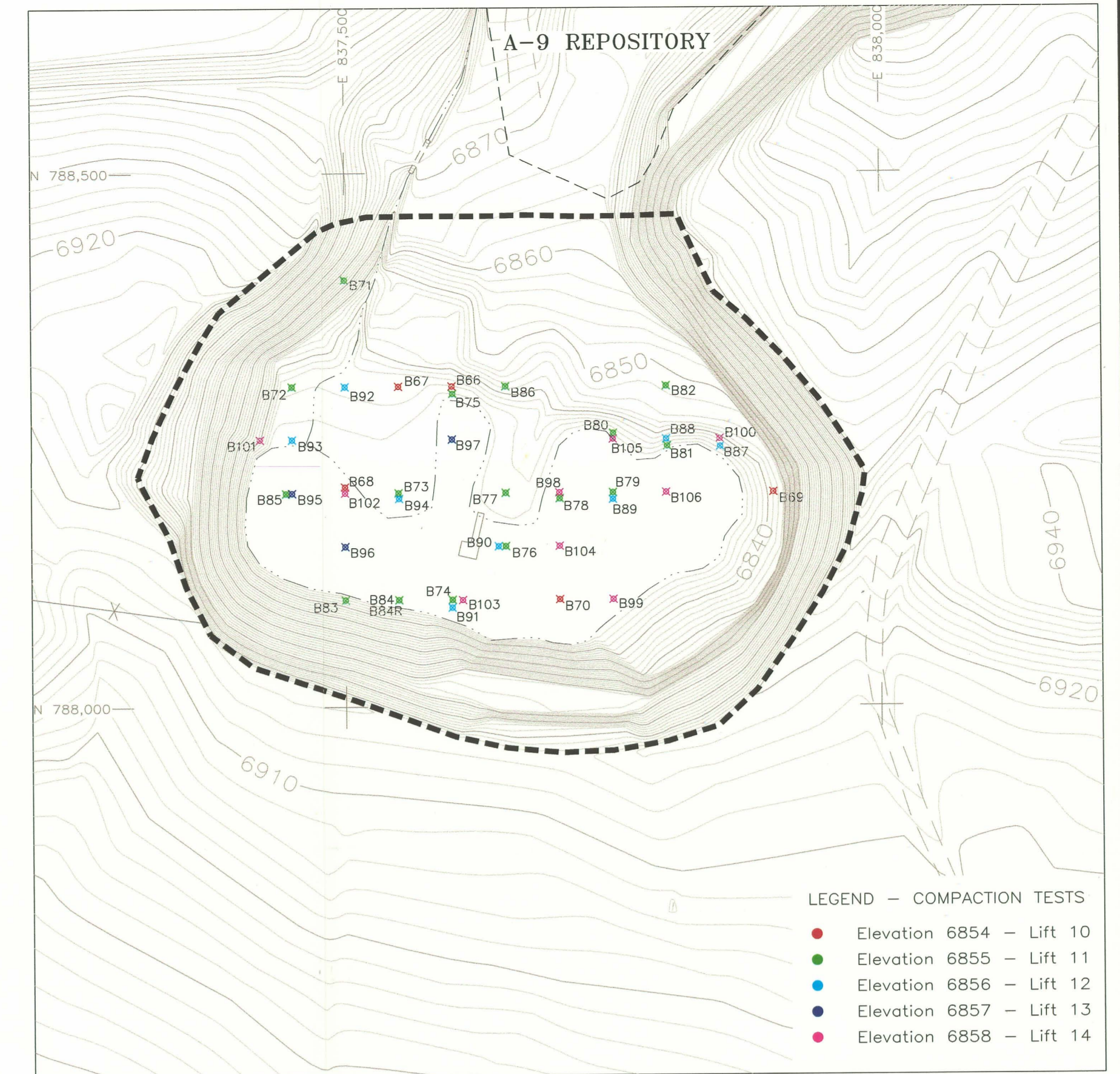


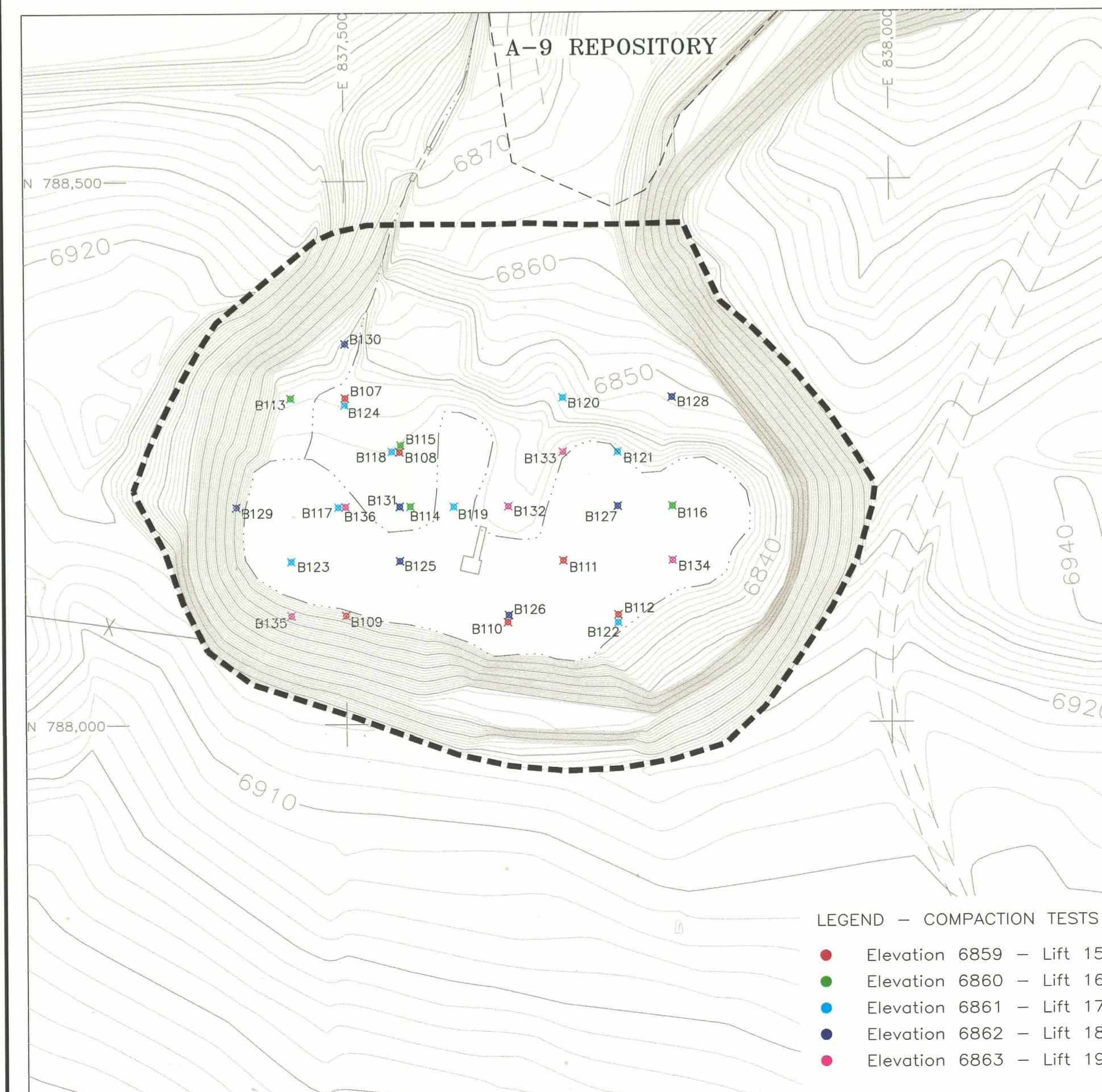
2001 COMPACTION TEST LOCATIONS
ELEVATION 6844 TO 6848



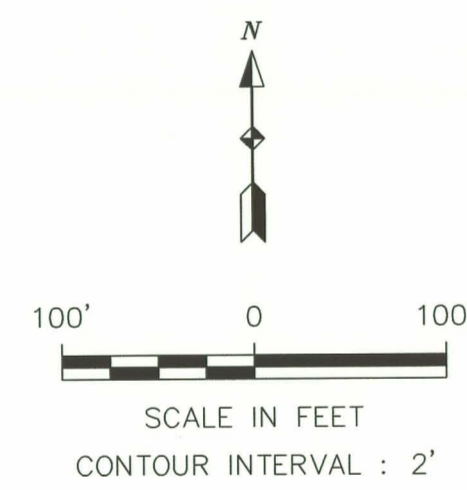
2001 COMPACTION TEST LOCATIONS
ELEVATION 6849 TO 6853



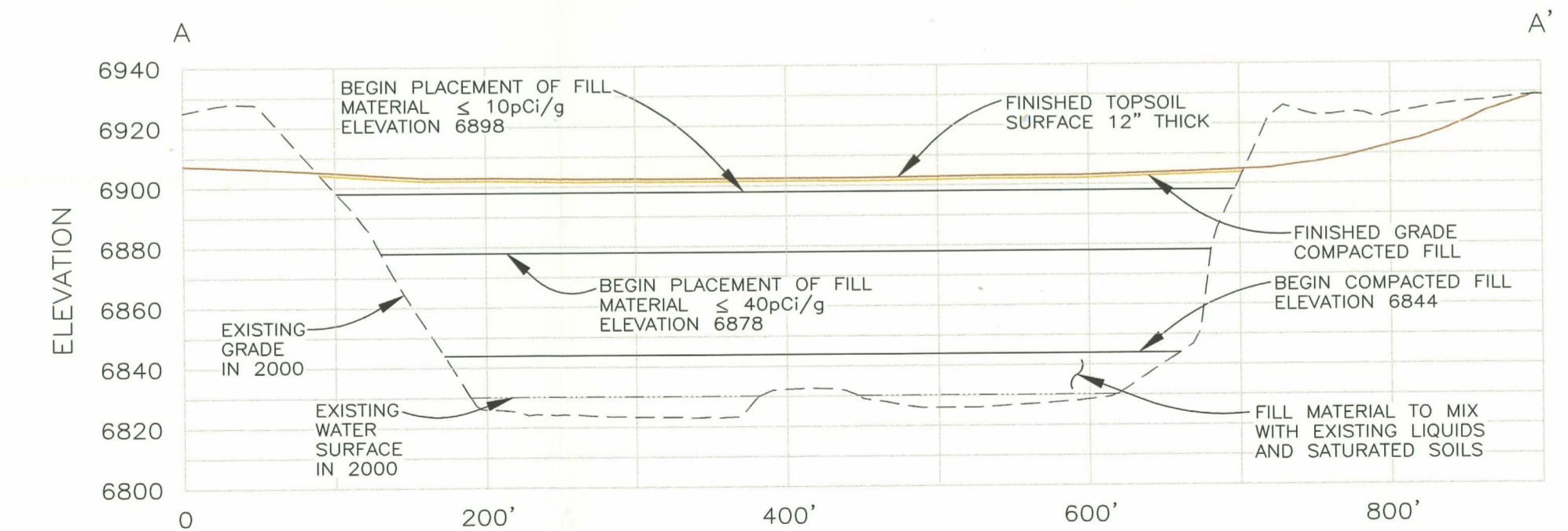
2001 COMPACTION TEST LOCATIONS
ELEVATION 6854 TO 6858



2001 COMPACTION TEST LOCATIONS
ELEVATION 6859 TO 6863



- LEGEND:
- EXISTING 2000 AERIAL TOPOGRAPHY
 - DRAINAGE PATH/PONDED WATER
 - UN-PAVED ROADS
 - UMETCO 1000' SITE GRID
 - C-18 PIT BOUNDARY
 - COMPACTION TEST LOCATIONS AS NOTED



- PROFILE LEGEND:
- EXISTING GRADE 2000 AERIAL TOPOGRAPHY
 - EXISTING WATER LEVEL 2000 AERIAL TOPOGRAPHY
 - FINISHED GRADE COMPACTED FILL - 2005
 - FINISHED GRADE TOPSOIL PLACEMENT - 2006

Umetco Minerals Corporation
2754 COMPASS DRIVE, SUITE 200, GRAND JUNCTION, CO 81506

AS BUILT

RECLAMATION OF THE C-18 PIT
COMPACTION TEST LOCATIONS
BACKFILL MATERIAL
ELEVATION 6844 TO ELEVATION 6863

GAS HILLS, WYOMING