



Cardinal Health  
Medical & Health Physics Services  
9668 Marion Ridge  
Kansas City, MO 64137  
816.965.0330 tel  
816.966.2040 fax

[www.cardinal.com](http://www.cardinal.com)

July 30, 2007

Nuclear Regulatory Commission, Region III  
Medical Licensing Division  
2443 Warrenville Road  
Lisle, IL 60532-4351

Dear Mr. Reichhold,

This letter is a notification for Radioactive Materials License #24-32429-01 (Clinical Cardiovascular Associates; 19550 E. 39<sup>th</sup> Street, Suite 225; Independence, Mo 64057). In the recent amendment we submitted to you, there was an error on the suite number. We had originally stated that the suite number was 225, which is for the main office. The actual suite number for the nuclear department is 227.

It would be greatly appreciated if the suite number is changed to 227.

If you have any further questions, please call me at 417-987-8363.

Sincerely,

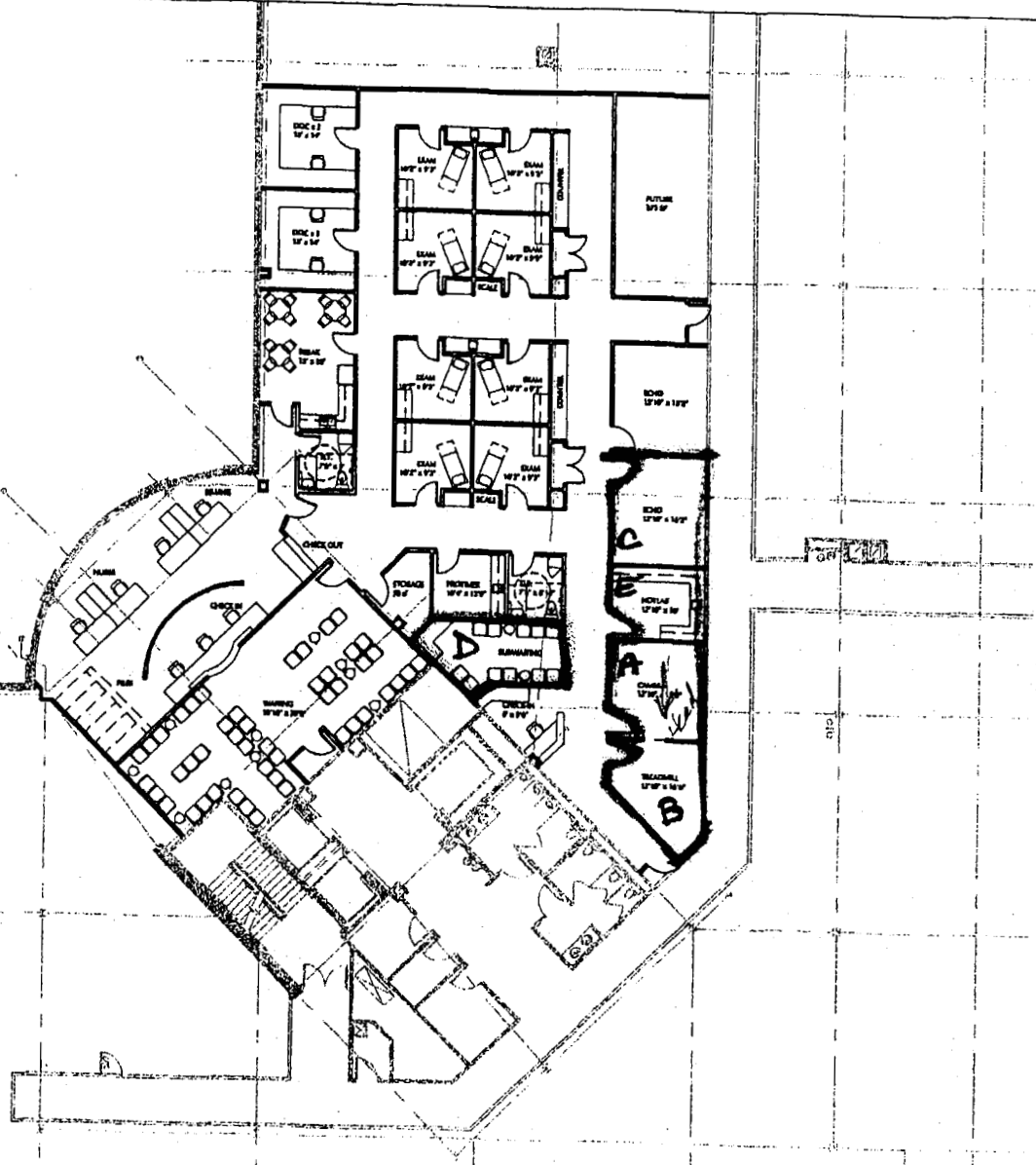
  
Lindsay Eggerman

RECEIVED AUG 03 2007

# OPTION 3.5a

SCALE: 1/8" = 1'-0"

7072 SF



# HWA

HOOPER WYSOCKI  
ARCHITECTS

613 W 47TH ST, SUITE 300  
KANSAS CITY, MO 64112  
P: 816.221.0606  
F: 816.221.0626

PRELIMINARY  
FLOOR

CLINICAL CARDIOVASCULAR ASSOCIATES  
INDEPENDENCE MEDICAL OFFICE BUILDING

19550 E. 39<sup>th</sup> Street, Suite 227  
Independence, Mo 64057

ISSUE DATE:  
FEBRUARY 28, 2007  
SVA PROJ. # 1408.24

Cardinal Health  
Medical & Health Physics Services  
9900 Marion Drive  
Kansas City, MO 64137

SPRINGFIELD MO 658  
JUL 31  
PM  
2007

SPRINGFIELD MO 658  
JUL 31  
PM  
2007

SPRINGFIELD MO 658  
JUL 31  
PM  
2007

CardinalHealth



Cardinal Health  
Medical & Health Physics Services  
9668 Marion Ridge  
Kansas City, MO 64137

Nuclear Regulatory Commission, Region III  
Medical Licensing Division  
Attn: Bill Reichhold  
2443 Warrenville Road  
Lisle, IL 60532-4351

