





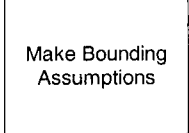
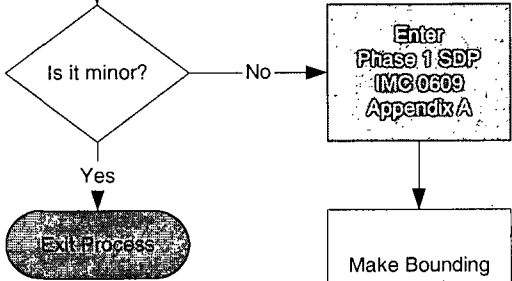
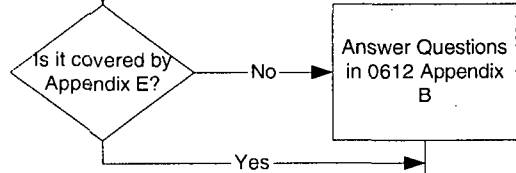
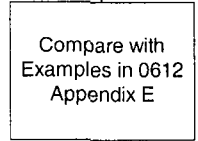
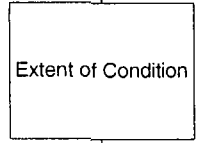
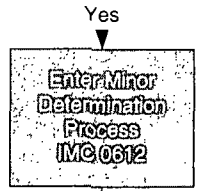


Significance Determination Process Flow

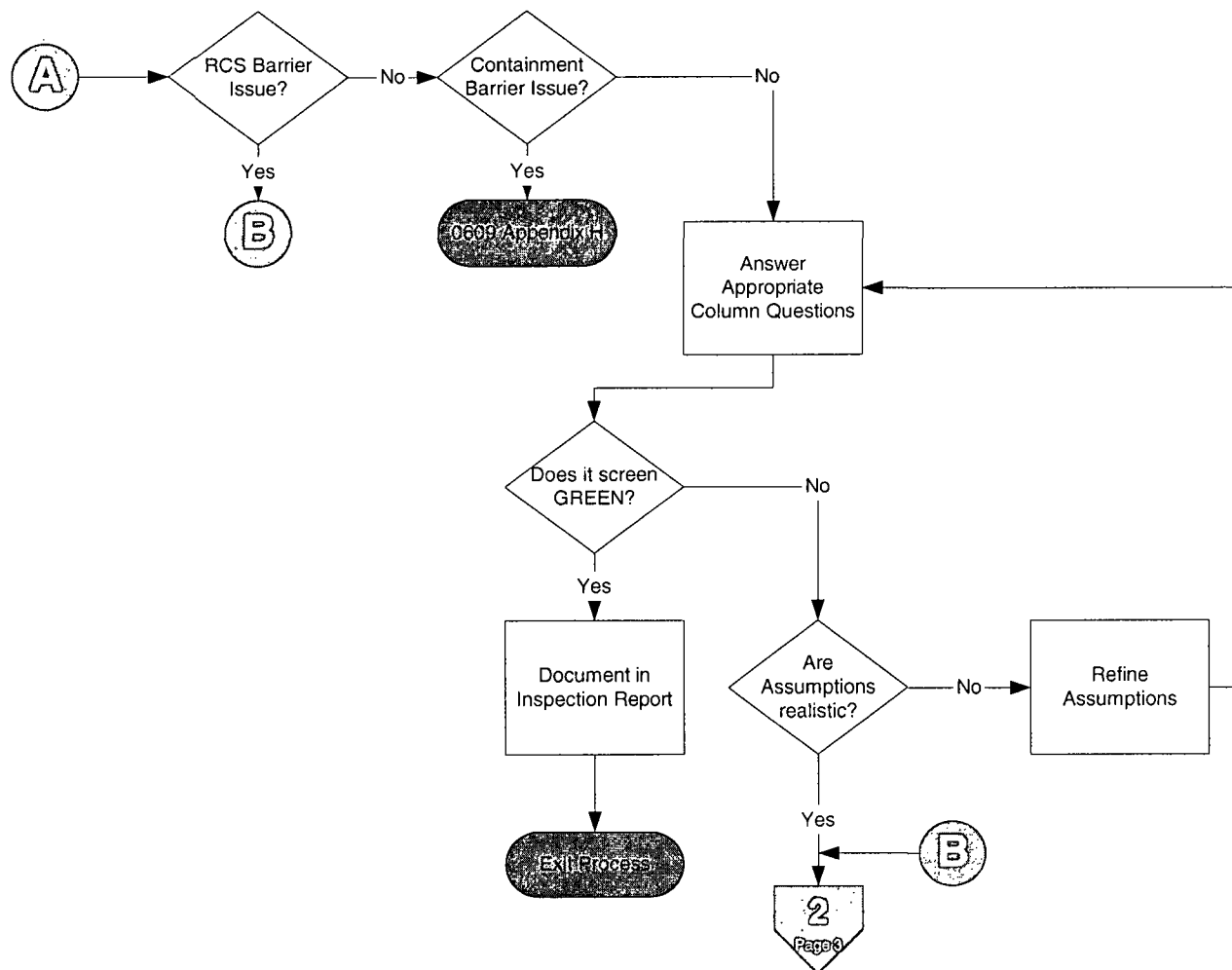
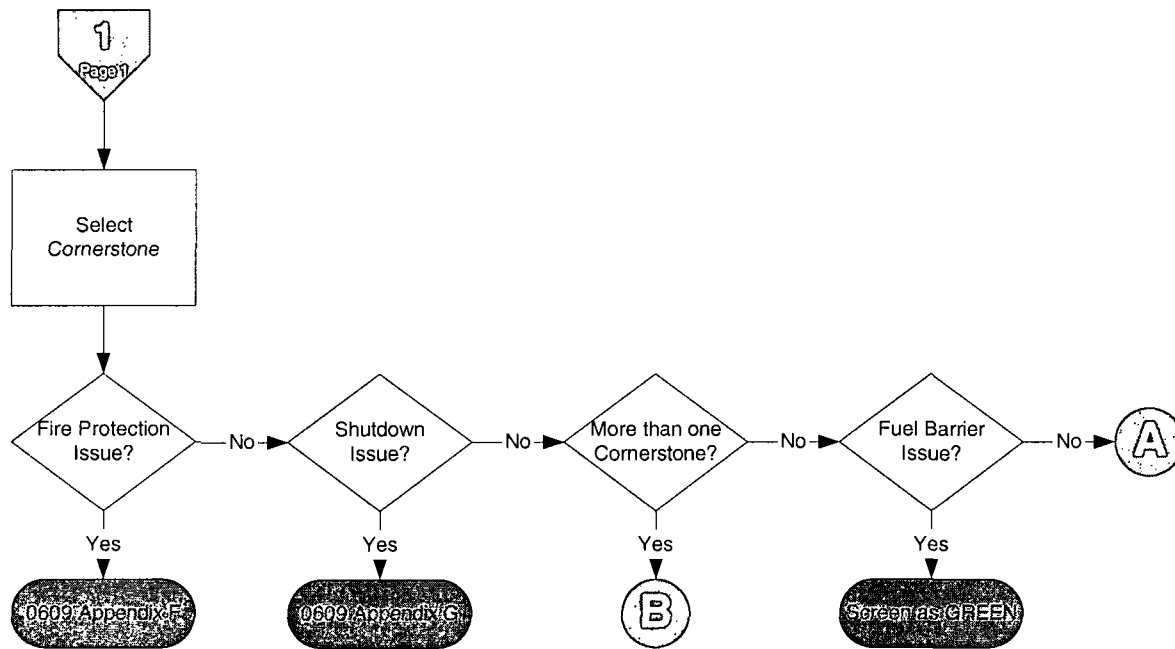
COLOR CODES

-  Transitions
-  Exit Process
-  Minor Determination
-  Phase 1
-  Phase 2
-  Phase 3

NOTE: Do NOT evaluate existing conditions that were not the result of the deficiency.



AI 30



Enter Phase 2
IMC 0609
Appendix A

Review Usage
Rules
0609 Appendix A
Attachment 2

Do Usage
Rules Apply?

Yes

Make Appropriate
Adjustments
during Estimation

No

Go to Site Specific
Notebook

Is Affected
System listed
in Table 2?

No

Contact SRAs

Yes

Note the Affected
Initiating Events
on Table 2

NOTE: If at any time during Phase 2 the assumptions change, return to Minor questions.

For Each Affected
Initiating Event

Select the
Initiating Event
Likelihood
Table 1

Go to Initiating
Event Worksheet

Determine which
functions on
worksheet are
affected

Circle the
sequences that
contain an
affected function

Increase
initiating event
likelihood?

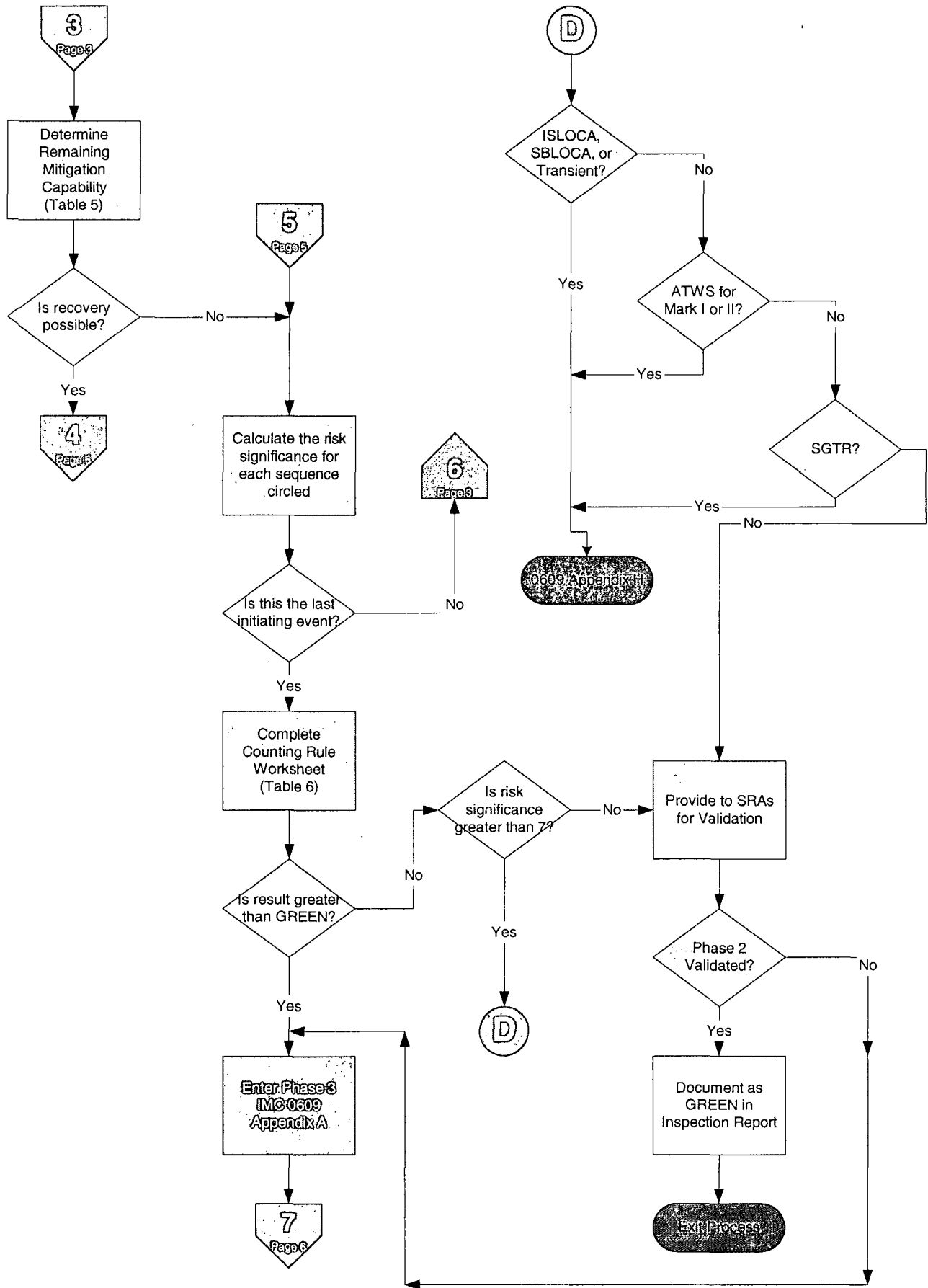
Yes

Circle all
sequences on
worksheet

No

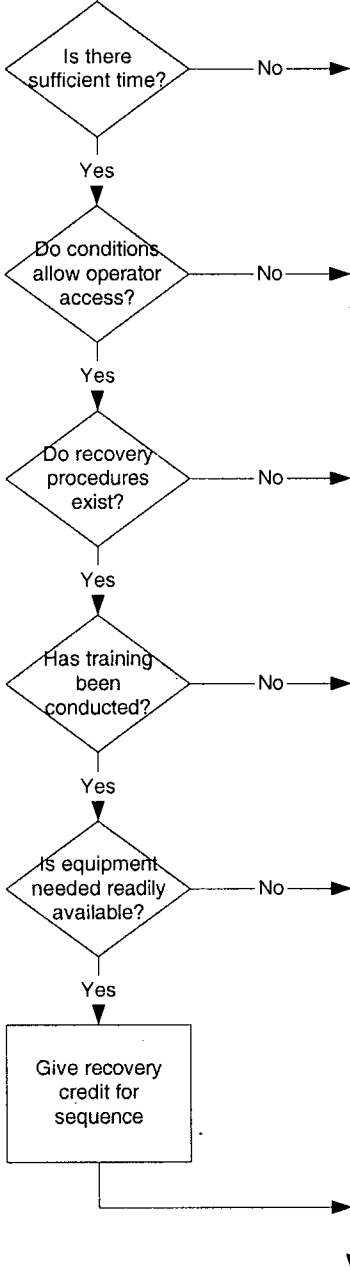
No

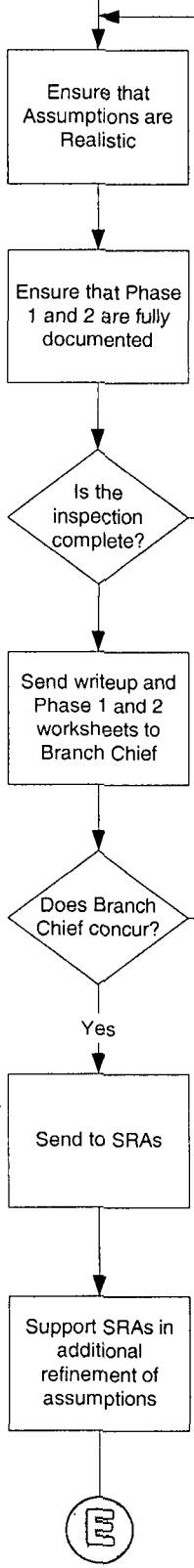
NOTE: DO NOT USE
SAMPLE TABLE 1
FROM APPENDIX A



Answer the following questions related to recovery

NOTE: Recovery credit may be different for different sequences.





NOTE: What do you expect would happen? Would it ALWAYS fail, or only sometimes?

NOTE: Do NOT evaluate existing conditions that were not the result of the deficiency.

