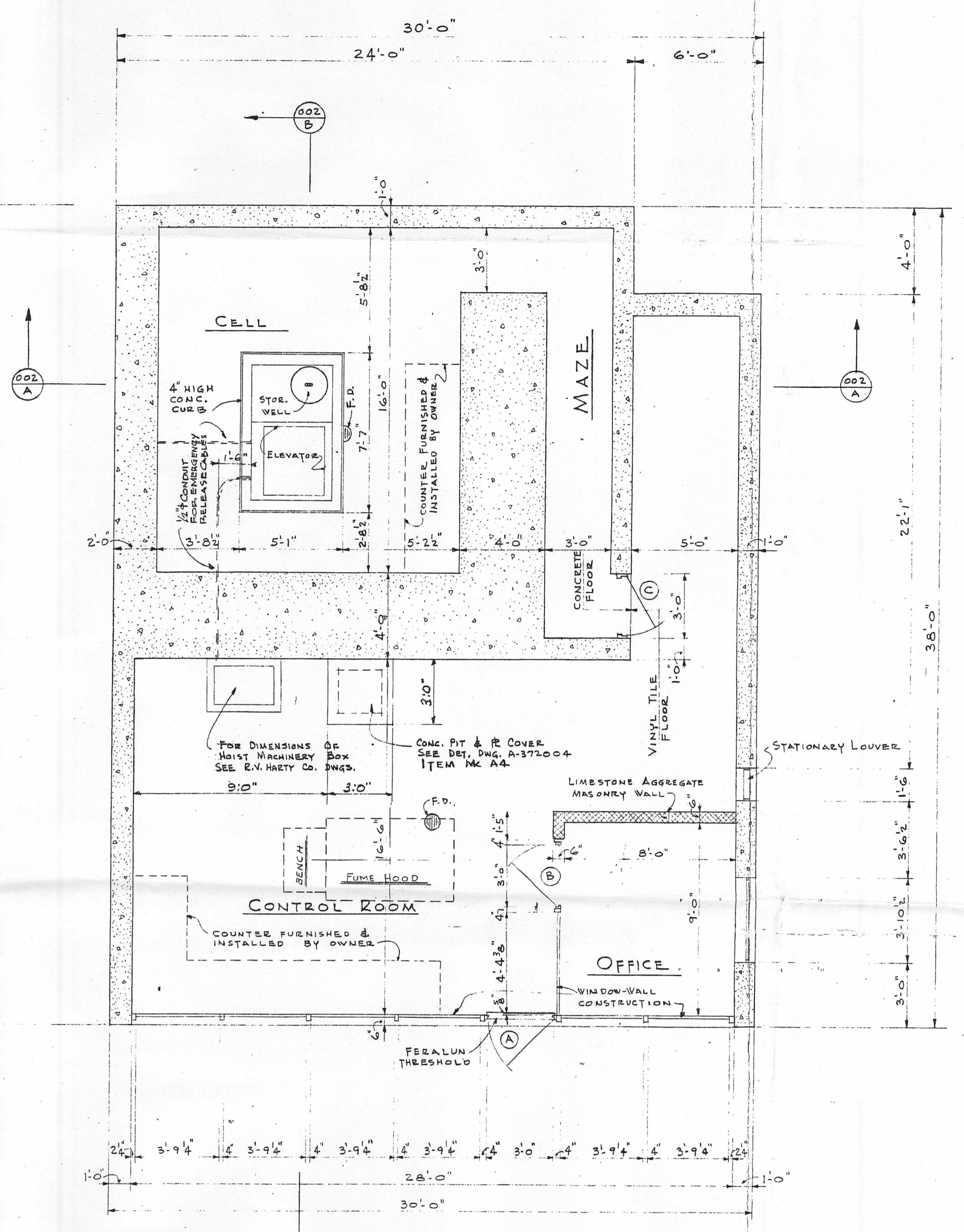


FOUNDATION PLAN
SCALE: 1/4" = 1'-0"



FLOOR PLAN
SCALE: 1/4" = 1'-0"

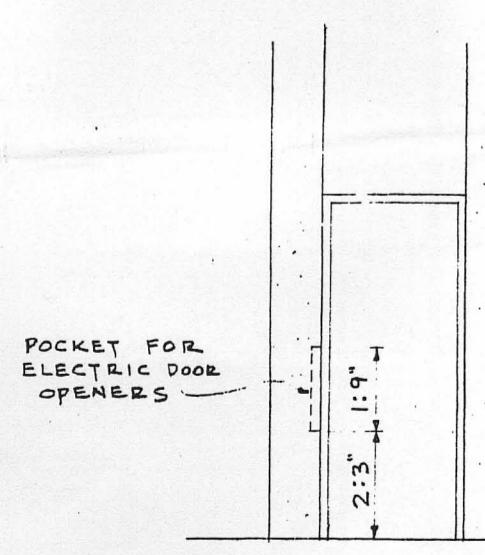
HARDWARE NOTE

ALL DOORS, EXCEPT AS NOTED, SHALL BE FITTED WITH STANDARD HARDWARE AS AVAILABLE FROM TRUSCON. BUTTS SHALL BE BALL BEARING, HALF SURFACE, HEAVY, BRONZE, P-3572. LOCKSETS SHALL BE P-3500-EX, KNOB OPERATED, WITH LATCH BOLT & DEAD BOLT. DEAD BOLT OPERATED BY KEY FROM OUTSIDE AND THUMB TURN INSIDE. FINISH U.S. 10.

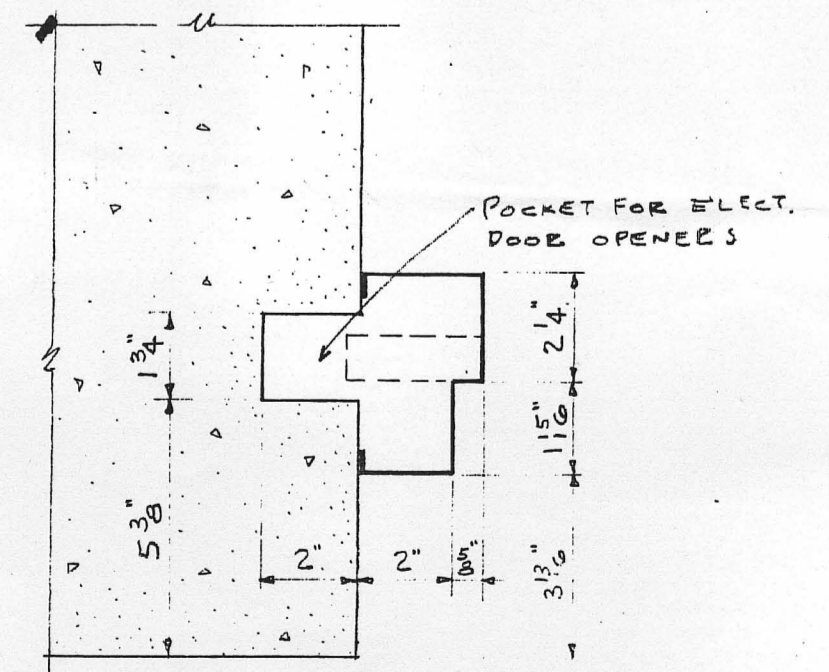
HARDWARE SET - DOOR C

- 1/2 PR. BUTTS P-3572
- 1 ONLY EXIT & PULL 5300 X 2510
- 1 ONLY EXIT DEVICE 8300
- 2 ONLY ELECTRIC OPENERS G33 X 12V RUSSWIN
- 1 ONLY CLOSER P-3535 X HD

HARDWARE SET FOR DOOR 'C' REQUIRES TWO EXIT DEVICES ON INSIDE OF DOOR AND ONE PULL GRIP ON OUTSIDE. PULL GRIP AND ONE EXIT DEVICE MOUNTED AT STANDARD HEIGHT ABOVE FLOOR AND SECOND EXIT DEVICE MOUNTED IMMEDIATELY ABOVE. DOOR FRAME SHALL BE CUT AND BOXED TO RECEIVE, PROTECT, & PERMIT PROPER OPERATION OF ELECTRIC DOOR OPENERS.

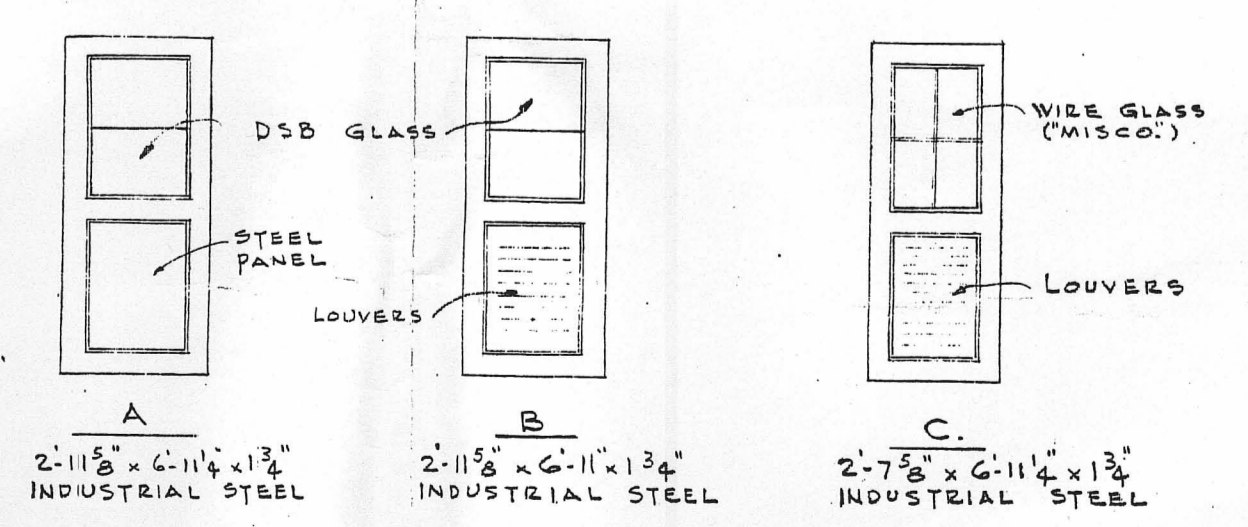


ELEVATION
SCALE: 1/4" = 1'-0"



SECTION AT JAMB
SCALE: 3/4" = 1'-0"

DETAILS OF DOOR "C"
(SHOWING POCKET FOR ELECTRIC OPENERS)



REVISIONS	DATE	BY	CHKD	APP'VD

GENERAL NOTES

REFERENCE DRAWINGS

- ARCHITECTURAL FIRST FLOOR & FOUNDATION PLANS A-372001
- ELEVATIONS & SECTIONS A-372001
- MISCELLANEOUS DETAILS A-372001
- STRUCTURAL A-372004 TO A-372006 INCL.
- ELECTRICAL A-372009 TO A-372013 INCL.
- PLUMBING & DRAINAGE A-372013
- HEATING & AIR COND. A-372014
- SITE PLAN A-372015

BLDG. No. 722

DESIGN AND CONSTRUCTION
CARBIDE AND CARBON CHEMICALS COMPANY
 A DIVISION OF UNION CARBIDE AND CARBON CORPORATION
 SOUTH CHARLESTON, WEST VA.

LOCATION 514
 TITLE ARCHITECTURAL
 FIRST FLOOR &
 FOUNDATION PLANS

DATE 5 MARCH 57 DATE 8 MARCH 57
 DRAWN BY F.N.H. CHECKED BY C.V. APPROVED BY E.C. TAYLOR
 REVISED BY E.C. DATE 6/4/57 SCALE 1/4" = 1'-0" A-372001

IRVING BOWMAN AND ASSOCIATES
 ARCHITECTS & ENGINEERS
 1100 BROADWAY, WEST VIRGINIA