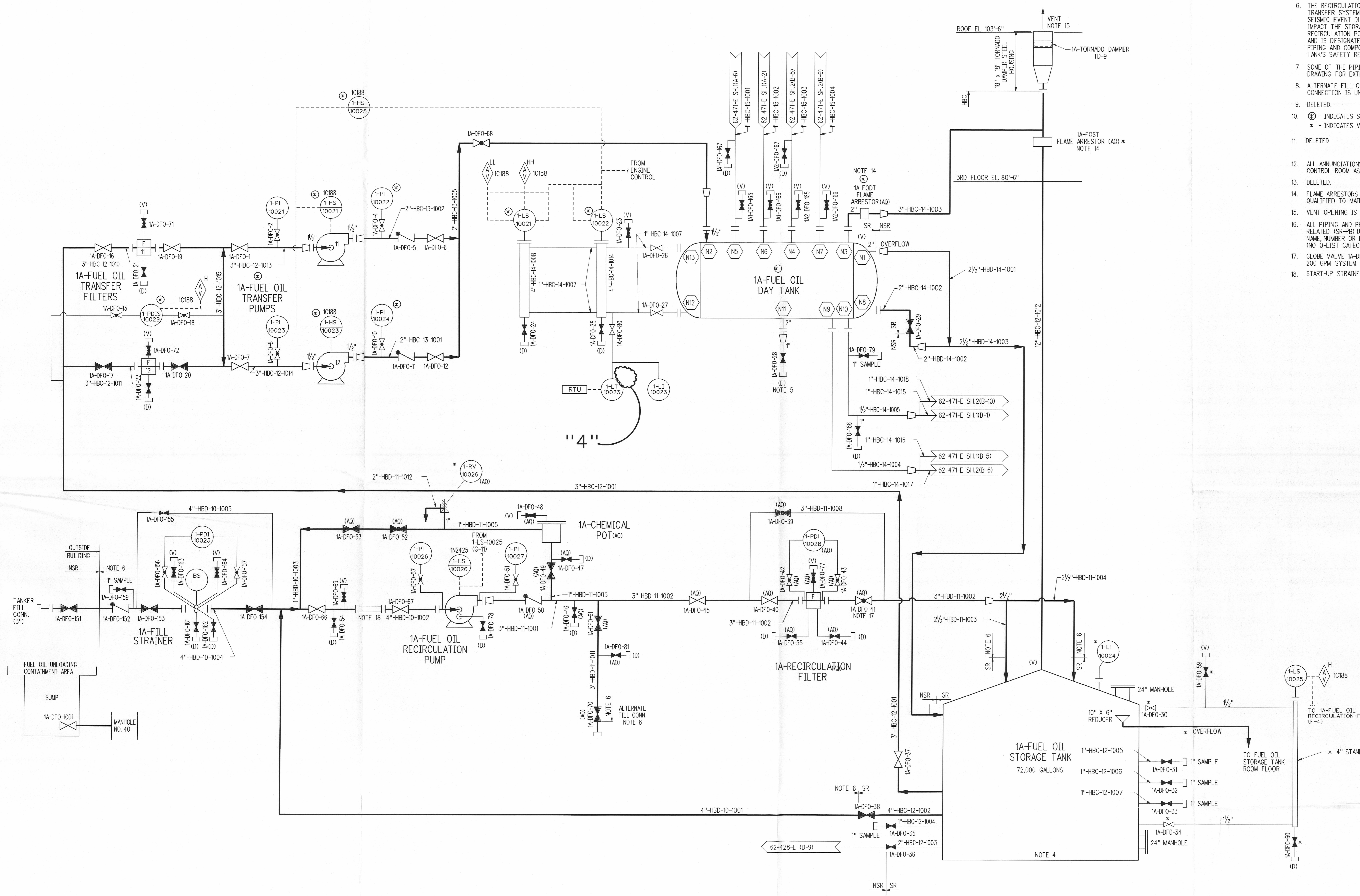


GENERAL NOTES:

- FOR SYMBOLS AND LEGENDS, SEE DWG NO. 6750-M-80 (BG&E DWG NO. 60-263-E).
- FOR DEFINITIONS OF LINE DESIGNATIONS, SEE DG-M600 FOR PIPING CLASS SHEETS AND DG-M601 FOR PIPING CLASS SUMMARY.
- THE DOWNSTREAM SIDE OF ALL VENT, DRAIN, AND SAMPLE PIPING VALVES ARE NON-SAFETY RELATED AND ARE PIPE CLASS JED. ALL VENTS ARE 3/4" AND DRAINS ARE 1" UNLESS OTHERWISE NOTED.
- TANK BOTTOM IS INCLINED.
- DRAIN LINE ALSO PROVIDES FOR SAMPLING OF TANK BOTTOM.
- THE RECIRCULATION AND FILLING FUNCTION OF THE FUEL OIL STORAGE AND TRANSFER SYSTEM IS NON-SAFETY RELATED. HOWEVER, TO ASSURE THAT A SEISMIC EVENT DURING EITHER RECIRCULATION OR FILLING EVOLUTIONS WILL NOT IMPACT THE STORAGE INTEGRITY OF THE 1A-FUEL OIL STORAGE TANK, THE RECIRCULATION PORTION OF THE SYSTEM IS QUALIFIED TO SEISMIC CATEGORY 1 AND IS DESIGNATED AQ. IN ADDITION, PORTIONS OF THE RECIRCULATION SYSTEM'S PIPING AND COMPONENTS ARE DEFINED SR-PB AS A SEISMIC EXTENSION OF THE TANK'S SAFETY RELATED BOUNDARY (SR-PB).
- SOME OF THE PIPING IN THIS SYSTEM IS EMBEDDED. REFER TO PHYSICAL DRAWING FOR EXTENT OF EMBEDDED PIPING.
- ALTERNATE FILL CONNECTION - IN THE EVENT THAT THE TANKER FILL CONNECTION IS UNAVAILABLE.
- DELETED.
- ⊕ - INDICATES SACM SUPPLIED COMPONENT
* - INDICATES VENDOR SUPPLIED COMPONENT
- DELETED.
- ALL ANNUNCIATIONS IN THE DG BUILDING ARE ANNUNCIATED IN THE MAIN CONTROL ROOM AS A COMMON TROUBLE ALARM.
- DELETED.
- FLAME ARRESTORS HAVE NO SAFETY RELATED FUNCTION, BUT ARE SEISMICALLY QUALIFIED TO MAINTAIN THE PRESSURE BOUNDARY. (AQ CLASSIFICATION)
- VENT OPENING IS PROTECTED FROM MISSILES, SNOW, RAIN, AND BIRDS.
- ALL PIPING AND PRESSURE BOUNDARY COMPONENTS ON THIS DRAWING ARE SAFETY RELATED (SR-PB) UNLESS OTHERWISE NOTED. "AQ" DESIGNATION BY THE COMPONENT NAME, NUMBER OR DEVICE BUBBLE INDICATES AUGMENTED QUALITY CLASSIFICATION (NO Q-LIST CATEGORY ASSIGNED), DUE TO THE SEISMIC CATEGORY 1 DESIGN.
- GLOBE VALVE 1A-DFO-41 TO BE THROTTLED TO MAINTAIN A MAXIMUM OF 200 GPM SYSTEM FLOW RATE.
- START-UP STRAINER IS REMOVED FROM SPOOL PIECE FOR NORMAL OPERATION.



REV	DATE	DESCRIPTION	DSN	DSGN	DE	RI	APPROVED
1		INCORP. EQN'S M-176, M-221, M-223, REVISED NOTES 3, 6, 8, 14, 15, 16, ADDED NOTES 17 & 18, CHANGED 1A-DFO-59 VALVE SYMBOL TO GATE, REVISED BOUNDARY CLASSIFICATION FLAGS, ADDED AQ SYMBOLS AND ISSUED AS-BUILT FOR FCR 89-079.					
2	3/24/88	AS BUILT INFO ONLY ES199700699-000	SF	JH			CDL
3	10/26/01	AS BUILT DCN 62437SH0001-2001SH0001 ES200000350-000	MPR				JM
4	3/20/05	AS BUILT DCN 62437SH0001-2002SH0001 ES19990635-001	WHI				

PIPING & INSTRUMENTATION DIAGRAM		FUEL OIL STORAGE & TRANSFER SYSTEM	
DIESEL GENERATOR BUILDING 1			
CALVERT CLIFFS NUCLEAR POWER PLANT		ENGINEERING SERVICES DEPARTMENT	
CALVERT CLIFFS UNIT 1		SIZE	CAT.
		E	C
SCALE: NONE	VENDOR DWG. NO. DG-M-13	REV.	
DWG. NO. 62437SH0001			4