

1944 AERIAL PHOTOGRAPH

1:1,200
1 INCH = 100 FEET



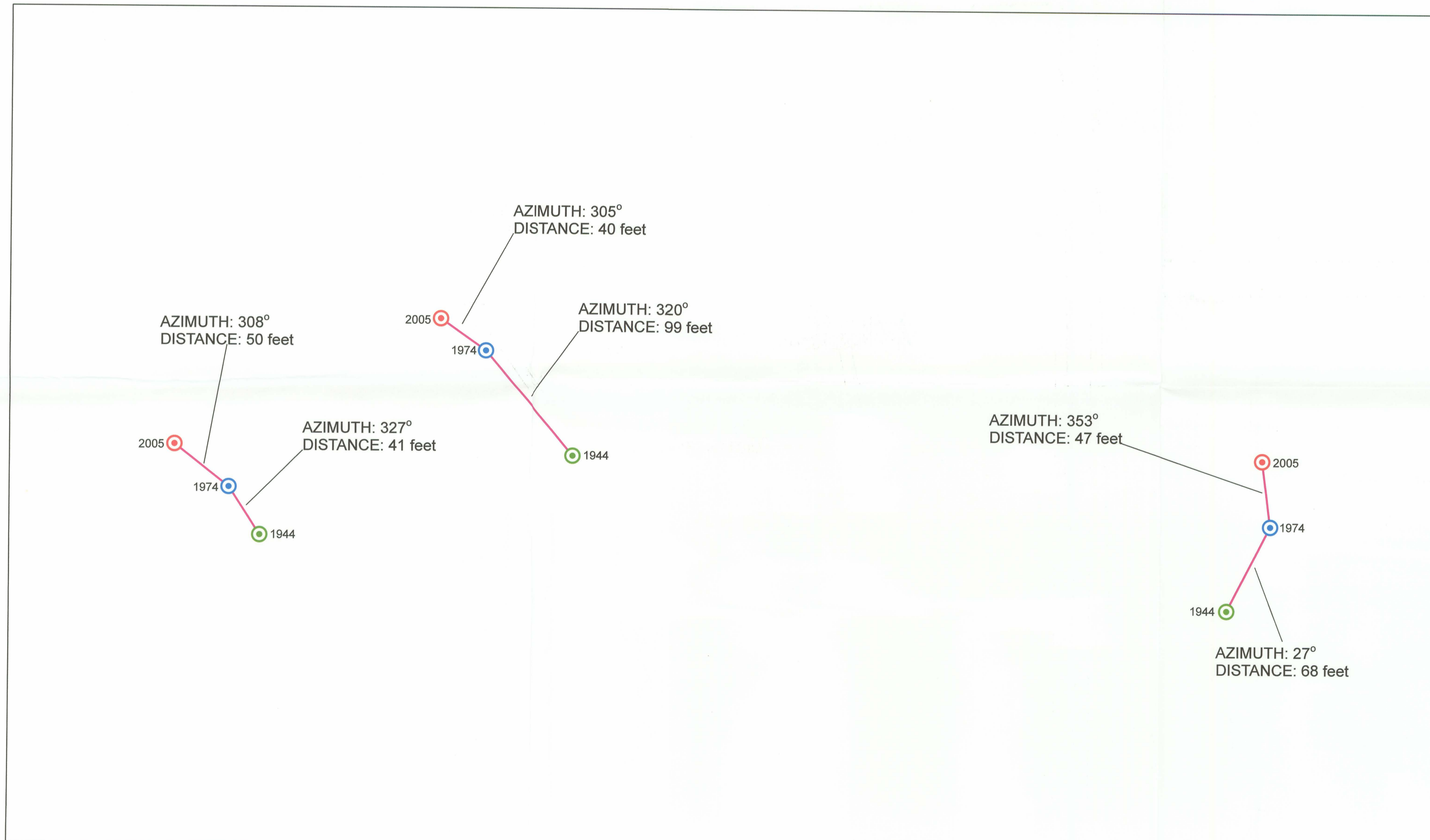
1974 AERIAL PHOTOGRAPH

1:1,200
1 INCH = 100 FEET

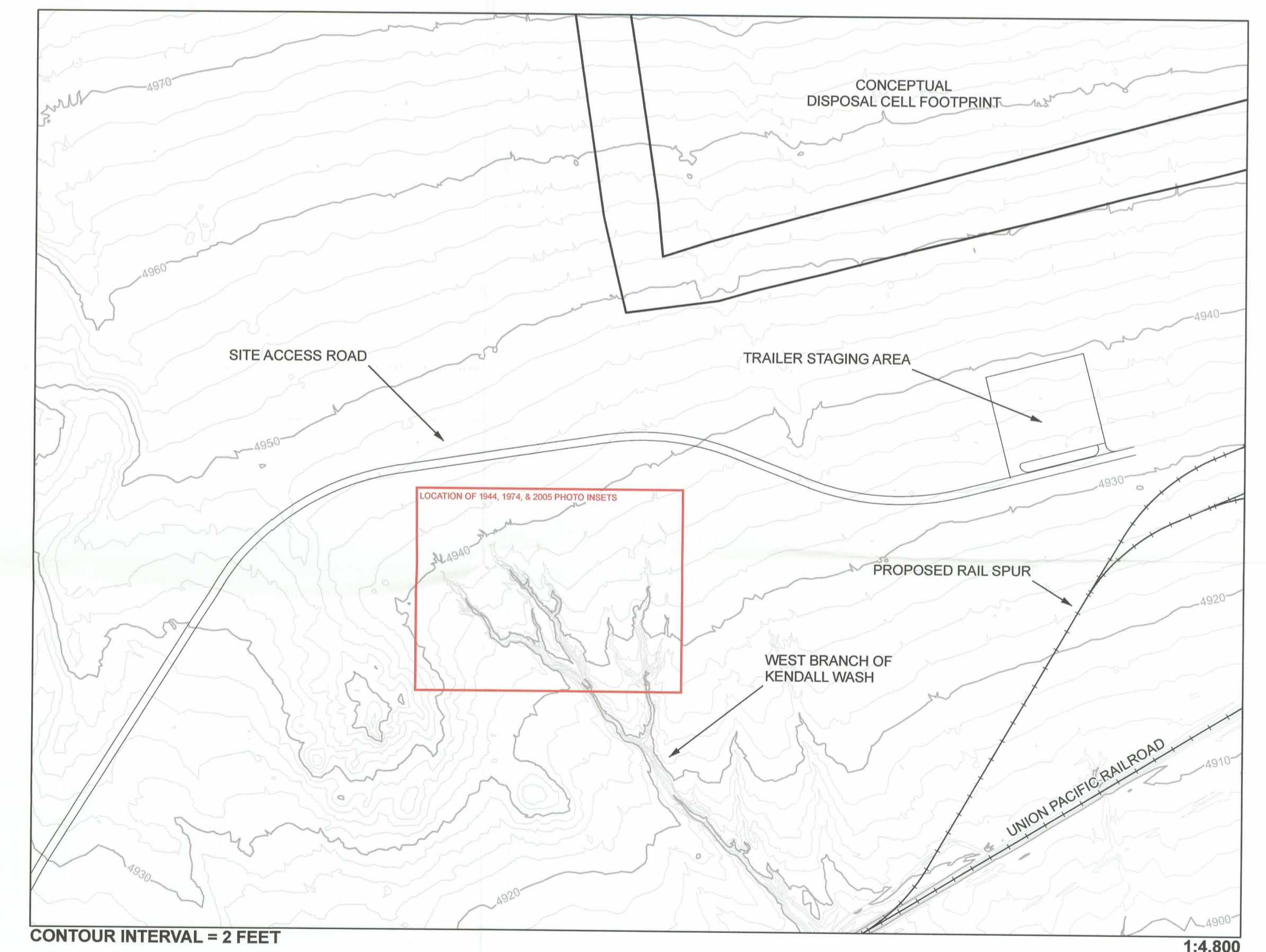


2005 AERIAL PHOTOGRAPH

1:1,200
1 INCH = 100 FEET



1:600
1 INCH = 50 FEET



1:4,800
1 INCH = 400 FEET

EXPLANATION	
●	1944 Head of Erosion Incision (approximate)
●	1974 Head of Erosion Incision (approximate)
●	2005 Head of Erosion Incision (approximate)
Note: All are plotted on the 2005 Aerial Photograph	

PLATE 2

N ↑ ↓ S	U.S. DEPARTMENT OF ENERGY GRAND JUNCTION, COLORADO	Work Performed by S.M. Stoller Corporation Under DOE Contract No. DE-AC01-02GJ79491
	Head of Erosion Incision from 1944 to 2005 at West Branch of Kendall Wash, Crescent Junction, Utah, Site	
DATE PREPARED: March 29, 2007	FILENAME: X0211800	

D-06