



UNITED STATES
NUCLEAR REGULATORY COMMISSION
REGION IV
611 RYAN PLAZA DRIVE, SUITE 400
ARLINGTON, TEXAS 76011-4005

June 20, 2007

Mike Blevins, Senior Vice President
and Chief Nuclear Officer
TXU Power
ATTN: Regulatory Affairs
Comanche Peak Steam Electric Station
P.O. Box 1002
Glen Rose, TX 76043

SUBJECT: SUMMARY OF MEETING WITH TXU POWER REGARDING COMANCHE
PEAK STEAM ELECTRIC STATIONS END-OF-CYCLE ASSESSMENT

Dear Mr. Blevins:

This refers to the end-of-cycle meeting conducted at Glen Rose, Texas on June 12, 2007, between the NRC and your staff. The participants discussed performance at Comanche Peak Steam Electric Station for the period of January 1 through December 31, 2006.

The attendance list is enclosed with this summary (Enclosure 1). A copy of the NRC presentation slides is also enclosed (Enclosure 2).

In accordance with 10 CFR 2.390 of the NRC's "Rules of Practice," a copy of this letter and its enclosures will be available electronically for public inspection in the NRC Public Document Room or from the Publicly Available Records (PARS) component of NRC's document system (ADAMS). ADAMS is accessible from the NRC Web site at <http://www.nrc.gov/reading-rm/adams.html> (the Public Electronic Reading Room).

Should you have any questions concerning this matter, we will be pleased to discuss them with you.

Sincerely,

Claude E. Johnson, Chief
Project Branch A
Division of Reactor Projects

Dockets: 50-445
50-446
Licenses: NPF-87
NPF-89

TXU Power

-2-

Enclosures:

1. Attendance List
2. NRC Presentation Slides

cc w/Enclosures:

Greg Doyle
Sheriff, Somervell County
750 E. Gibbs Blvd.
Glen Rose, TX 76043

The Honorable Pam Miller
Mayor of Glen Rose
P.O. Box 1949
Glen Rose, TX 76043

The Honorable Andy Rash
Hood County Judge
100 E. Pearl Street
Granbury, TX 76048

David Southern
Mayor of Granbury
P.O. Box 969
Granbury, TX 76048

Federal Emergency Management Agency
ATTN: William E. Peterson, Regional Director
Region VI, Federal Center
800 North Loop 288
Denton, TX 76209-3698

Paul Hudson, Chairman
Public Utility Commission
William B. Travis Bldg.
P.O. Box 13326
1701 North Congress Avenue
Austin, TX 78711-3326

William "Dub" Taylor
State Energy Conservation Office
111 East 17th Street, #1114
Austin, TX 78711

Gene Mayo
Sheriff, Hood County
400 N. Gordon Street
Granbury, TX 76048

TXU Power

-3-

Jack Colley, State Coordinator
Division of Emergency Management
Texas Department of Public Safety
Box 4087, 5805 North Lamar Blvd.
Austin, TX 78773-4087

Fred W. Madden, Director
Regulatory Affairs
TXU Power
P.O. Box 1002
Glen Rose, TX 76043

George L. Edgar, Esq.
Morgan Lewis
1111 Pennsylvania Avenue, NW
Washington, DC 20004

Terry Parks, Chief Inspector
Texas Department of Licensing
and Regulation
Boiler Program
P.O. Box 12157
Austin, TX 78711

The Honorable Walter Maynard
Somervell County Judge
P.O. Box 851
Glen Rose, TX 76043

Richard A. Ratliff, Chief
Bureau of Radiation Control
Texas Department of Health
1100 West 49th Street
Austin, TX 78756-3189

Environmental and Natural
Resources Policy Director
Office of the Governor
P.O. Box 12428
Austin, TX 78711-3189

Brian Almon
Public Utility Commission
William B. Travis Building
P.O. Box 13326
Austin, TX 78711-3326

TXU Power

-4-

Susan M. Jablonski
Office of Permitting, Remediation
and Registration
Texas Commission on
Environmental Quality
MC-122
P.O. Box 13087
Austin, TX 78711-3087

Lisa R. Hammond, Chief
Technological Hazards Branch
National Preparedness Division
FEMA Region VI
800 N. Loop 288
Denton, TX 76209

Institute of Nuclear Power Operations (INPO)
Records Center
700 Galleria Parkway SE, Suite 100
Atlanta, GA 30339

Chairperson
Denton Field Office
Chemical and Nuclear Preparedness
and Protection Division
Office of Infrastructure Protection
Preparedness Directorate
Dept. of Homeland Security
Federal Regional Center
800 North Loop 288
Denton, TX 76209-3698

**NRC End of Cycle
Public Meeting
June 12, 2007**

NAME	TITLE	DEPT	PHONE
Xochitl Sanchez			
Jim Ogden	Supervising Planner - TECH STANDARDS	Governor's Div of Emergency Mgmt	512/424-5677
Natasha Sanchez			
Xiomara Sanchez			
Kenneth " " "			
Micaela " " "			
GARY MERKIA	REG AFFAIRS	TXU POWER	254-897-6613
FRANK SHANTS	COMMUNITY RELATIONS	TXU POWER	254/897-0108
Eugene Samuel	CITIZEN	-	817-202-0162
Ed Underwood	Community Relations	TXU Power	254-897-5791
John Maynard	County Judge	Somevell Co	254-897-2322
MIKE BLEVINS	SR VP & CO TXU	TXU Power	254-897-5209
DAVID BARRHAM	EM. PLANNER	TXU POWER	254-897-5984
Claude G. Johnson	Branch Chief, DRP	USNRC	(817) 860-8148
Mahdi Hayes	Reactor Engineer	USNRC	817-276-6546
JEFFRY LEE	Dir. in Rel	TXU	254-897-5265
Sue Samra	Site Secretary	USNRC	817-202-0162
BOBBY BIRD	Director, Strategic Supt	TXU	817-573-7607
RAFAEL FLORES	Site Vice President	TXU	817-559-0403
Eugene Dyes	QA Auditor	TXU	254-897-5468
BOB ARWELL	REG. AFFAIRS	TXU	897-5310
Andy Raul	Co. Judge Hood		817-579-3200

Enclosure 2

Comanche Peak Steam Electric Station Annual Assessment Meeting

Reactor Oversight Program - CY 2006



Nuclear Regulatory Commission - Region IV
Glen Rose, TX
June 12, 2007

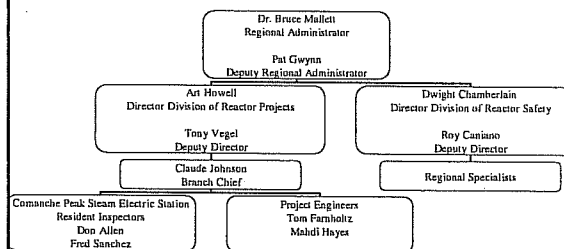
Purpose of Today's Meeting

- A public forum for discussion of the licensee's performance
- NRC will address the licensee performance issues identified in the annual assessment letter
- Licensee will be given the opportunity to respond to the information in the letter and inform the NRC of new or existing programs to maintain or improve their performance

Agenda

- Introduction
- Review of Reactor Oversight Process
- National Summary of Plant Performance
- Discussion of Plant Performance Results
- Licensee Response and Remarks
- NRC Closing Remarks
- Break
- NRC available to address public questions

Region IV Organization

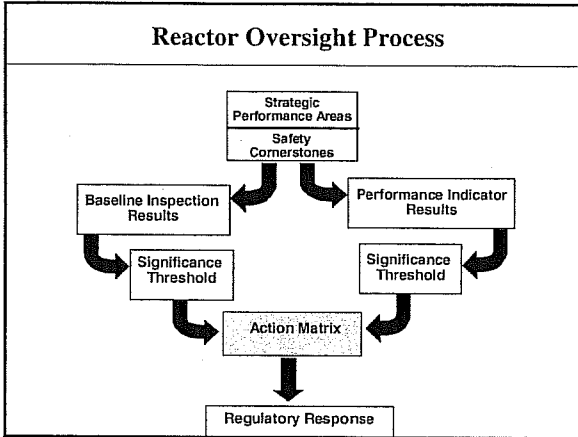


NRC Representatives

- Don Allen, Senior Resident Inspector
- (254) 897-1500
- Fred Sanchez, Resident Inspector
- (254) 897-1500
- Claude Johnson, Branch Chief
- (817) 860-8148
- Mahdi Hayes, Project Engineer
- (817) 276-6546

NRC Performance Goals

- Safety: Ensure protection of the public health and safety and the environment
- Security: Ensure the secure use and management of radioactive materials
- Openness: Ensure openness in our regulatory process
- Effectiveness: Ensure that NRC actions are effective, efficient, realistic, and timely
- Management: Ensure excellence in agency management to carry out the NRC' strategic objective



Examples of Baseline Inspections

- Equipment Alignment ~80 hrs/yr
- Triennial Fire Protection ~200 hrs every 3 yrs
- Operator Response ~125 hrs/yr
- Emergency Preparedness ~80 hrs/yr
- Rad Release Controls ~110 hrs every 2 yrs
- Worker Radiation Protection ~90 hrs/yr
- Corrective Action Program ~250 hrs every 2 yrs
- Corrective Action Case Reviews ~60 hrs/yr

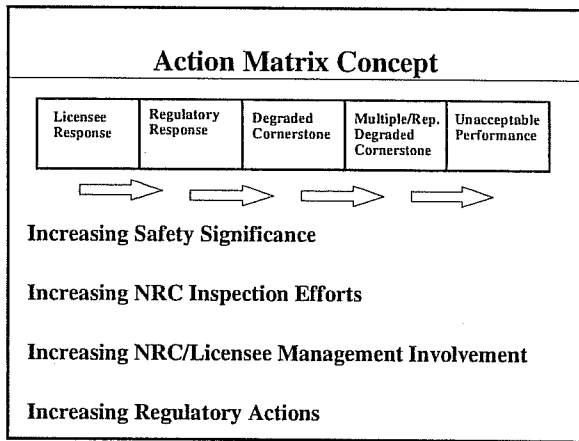
Significance Threshold

Performance Indicators

Green: Only Baseline Inspection
White: May increase NRC oversight
Yellow: Requires more NRC oversight
Red: Requires more NRC oversight

Inspection Findings

Green: Very Low safety issue
White: Low to moderate safety issue
Yellow: Substantial safety issue
Red: High safety issue



National Summary of Plant Performance

Status at End of CY 2006

Licensee Response	84
Regulatory Response	12
Degraded Cornerstone	4
Multiple/Repetitive Degraded Cornerstone	3
Unacceptable	0
Total	103

National Summary

- **Performance Indicator Results (at end of CY 2006)**
 - ▶ **Green** 1843
 - ▶ **White** 11
 - ▶ **Yellow** 0
 - ▶ **Red** 0
- **Total Inspection Findings (CY 2006)**
 - ▶ **Green** 676
 - ▶ **White** 13
 - ▶ **Yellow** 0
 - ▶ **Red** 0

**Comanche Peak Steam Electric Station
Assessment Results**

(January 1 - December 31, 2006)

- Units 1 and 2 were in the Licensee Response Column of the NRC Action Matrix
- No Greater Than Green Inspection Findings
- No Greater Than Green Performance Indicators

**Comanche Peak Steam Electric Station
Substantive Cross-Cutting Issues**

- Substantive Cross-Cutting Issues Potentially Effect Multiple Cornerstones
- No Substantive Cross-Cutting Issues Identified

**Comanche Peak Steam Electric Station
Inspection Activities**

(January 1 - December 31, 2006)

- Resident Inspectors Expended Approximately 2670 Hours Inspecting the Comanche Peak Steam Electric Station in 2006
- Region Based Inspectors Expended Approximately 1720 Hours Inspecting the Comanche Peak Steam Electric Station in 2006
- Comanche Peak Unit 2 Completed a Scheduled Refueling Outage in 2006

**Comanche Peak Steam Electric Station
Inspection Activities**

(January 1 - December 31, 2006)

- Comanche Peak Unit 2 Manual Reactor Trip due to a High Steam Generator Water Level Condition
- Comanche Peak Unit 2 Manual Reactor Trip due to a Low Steam Generator Water Level Condition
- Radiation Safety Team Inspection Conducted at Comanche Peak
- Component Design Basis Team Inspection Conducted at Comanche Peak

**Comanche Peak Steam Electric Station
Annual Assessment Summary**

(January 1 - December 31, 2006)

- TXU Power operated the Comanche Peak Steam Electric Station, Units 1 and 2 in a manner that preserved public health and safety
- All cornerstone objectives were met
- NRC plans to perform baseline inspections at Comanche Peak
- Comanche Peak Unit 1 to Replace Steam Generators and Reactor Vessel Head in 2007

Licensee Response and Remarks

Mike Blevins
Senior Vice President and Chief Nuclear Officer
TXU Power

Contacting the NRC

- Report an emergency
 - ▶ (301) 816-5100 (call collect)
- Report a safety concern:
 - ▶ (800) 695-7403
 - ▶ Allegation@nrc.gov
- General information or questions
 - ▶ www.nrc.gov
 - ▶ Select "What We Do" for Public Affairs

Reference Sources

- Reactor Oversight Process
 - ▶ <http://www.nrc.gov/NRR/OVERSIGHT/ASSESS/index.html>
- Public Electronic Reading Room
 - ▶ <http://www.nrc.gov/reading-rm.html>
- Public Document Room
 - ▶ 1-800-397-4209 (Toll Free)

Exhibit 4 - ACTION MATRIX

	Licensee Response column	Regulatory Response column	Degraded Cornerstone column	Multiple/ Repetitive Degraded Cornerstone column	Unacceptable Performance column	IMC 0350 Process	
RESULTS	All Assessment Inputs (Performance Indicators (PIs) and Inspection Findings) Green; Cornerstone Objectives Fully Met	One or Two White Inputs (in different cornerstones) in a Strategic Performance Area; Cornerstone Objectives Fully Met	One Degraded Cornerstone (2 White Inputs or 1 Yellow Input) or any 3 White Inputs in a Strategic Performance Area; Cornerstone Objectives Met with Moderate Degradation in Safety Performance	Repetitive Degraded Cornerstone; Multiple Degraded Cornerstones; Multiple Yellow Inputs; or 1 Red Input; Cornerstone Objectives Met with Longstanding Issues or Significant Degradation in Safety Performance	Overall Unacceptable Performance; Plants Not Permitted to Operate Within this Band; Unacceptable Margin to Safety	Plants in a shutdown condition with performance problems placed under the IMC 0350 process	
RESPONSE	Regulatory Performance Meeting	None	Branch Chief (BC) or Division Director (DD) Meet with Licensee	DD or Regional Administrator (RA) Meet with Licensee	RA (or EDO) Meet with Senior Licensee Management	Commission meeting with Senior Licensee Management	RA (or EDO) Meet with Senior Licensee Management
	Licensee Action	Licensee Corrective Action	Licensee root cause evaluation and corrective action with NRC Oversight	Licensee cumulative root cause evaluation with NRC Oversight	Licensee Performance Improvement Plan with NRC Oversight		Licensee Performance Improvement Plan / Restart Plan with NRC Oversight
	NRC Inspection	Risk-Informed Baseline Inspection Program	Baseline and supplemental inspection procedure 95001	Baseline and supplemental inspection procedure 95002	Baseline and supplemental inspection procedure 95003		Baseline and supplemental as practicable, plus special inspections per restart checklist.
	Regulatory Actions	None	Supplemental inspection only	Supplemental inspection only	-10 CFR 2.204 DFI -10 CFR 50.54(f) Letter - CAL/Order	Order to Modify, Suspend, or Revoke Licensed Activities	CAL/order requiring NRC approval for restart.
COMMUNICATION	Assessment Letters	BC or DD review/sign assessment report (w/ inspection plan)	DD review/sign assessment report (w/ inspection plan)	RA review/sign assessment report (w/ inspection plan)	RA review/sign assessment report (w/ inspection plan)		N/A. RA (or 0350 Panel Chairman) review/ sign 0350-related correspondence
	Annual Public Meeting	SRI or BC Meet with Licensee	BC or DD Meet with Licensee	RA (or designee) Discuss Performance with Licensee	RA or EDO Discuss Performance with Senior Licensee Management		N/A. 0350 Panel Chairman conduct public status meetings periodically
	Commission Involvement	None	None	None	Plant discussed at AARM	Commission Meeting with Senior Licensee Management	Commission meetings as requested, restart approval in some cases.
INCREASING SAFETY SIGNIFICANCE ----->							

Note 1: Other than the CAL, the regulatory actions for plants in the Multiple/Repetitive Degraded Cornerstone column and IMC 0350 column are not mandatory agency actions. However, the regional office should consider each of these regulatory actions when significant new information regarding licensee performance becomes available.

Note 2: The IMC 0350 Process column is included for illustrative purposes only and is not necessarily representative of the worst level of licensee performance. Plants under the IMC 0350 oversight process are considered outside the auspices of the ROP Action Matrix. See IMC 0350, "Oversight of Reactor Facilities in a Shutdown Condition due to Significant Performance and/or Operational Concerns," for more detail.