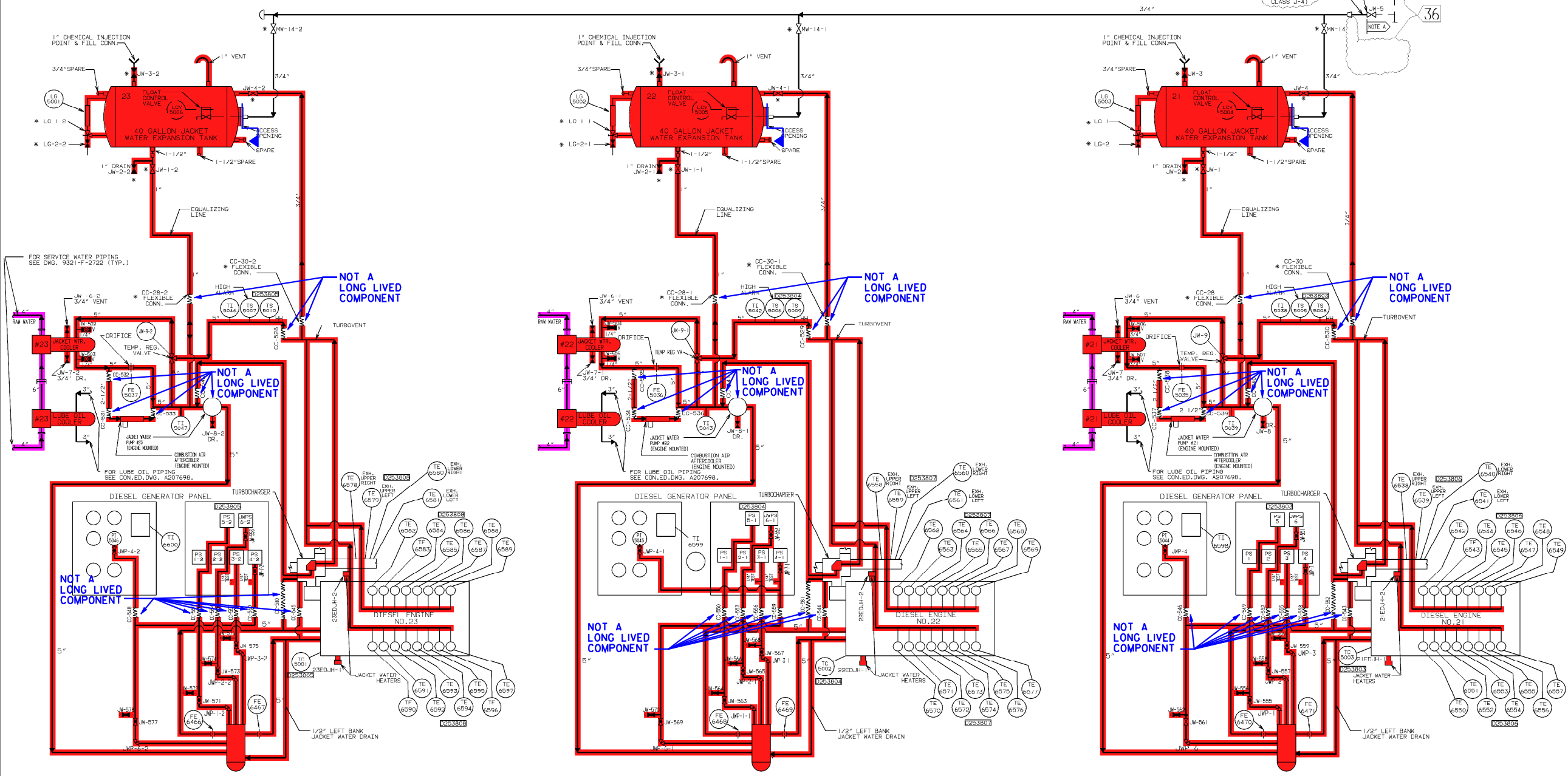


0	7-10-06					
NO.	DATE	DESCRIPTION	BY	ENG	CHK	APP
REVISIONS						
LRA-9321-2027-0						
CAD FILE						
LRA-9321-2027_61.DGN						
RASTER FILE						
9321-2027_61.CAL						

8202-J-2028



REFERENCE DWG.'S.

- U.E. & C. DWG. NO.
- 9321-C-2016 FLOW DIAGRAM SYMBOLS.
 - 9321-F-2257 LOCAL WATER PIPING RIVER WATER SYSTEM.
 - 9321-F-2258 FUEL OIL STARTING AIR & JACKET WATER PIPING-SHT. NO. 1.
 - 9321-F-2259 FUEL OIL STARTING AIR & JACKET WATER PIPING-SHT. NO. 2.
 - 9321-F-2260 FUEL OIL STARTING AIR & JACKET WATER PIPING-SHT. NO. 3.
 - 9321-F-2261 FUEL OIL STARTING AIR & JACKET WATER PIPING-SHT. NO. 4.
 - 8207698 FLOW DIAGRAM JACKET WATER SYSTEM.
- U.E. & C. F.P. NO.
- 9321-20364 OUTLINE OF DIESEL GAUGE PANEL.
 - 9321-20209 EXPANSION TANK ASSEMBLY.

- NOTE :
- 1. ALL VALVES, INSTRUMENTS, EQUIPMENT ETC. IS SUPPLIED WITH DIESEL EXCEPT ITEMS IDENTIFIED THIS *.
 - 2. THE QUALITY GROUP A, B, C AND SEISMIC BOUNDARIES EXTEND TO THE FIRST SEISMIC SUPPORT/RESTRAINT BEYOND THE BOUNDARIES SHOWN.

THIS DRAWING CONTAINS ITEMS WHICH MAY BE CONTROLLED WITHIN CON DESIGN AS
"CLASS A" ITEMS
PER CI-240-1

CLASS I PIPING
WHOLE SYSTEM TO BE CLASS I INCLUDING DIESEL ENGINES & GENERATORS

EVERYTHING ON THIS DWG. IS PART OF THE EMERGENCY DIESEL GENERATOR AUXILIARY SYSTEMS DESCRIBED AS PART OF ON-SITE EMERGENCY A-C POWER SYSTEM LISTED IN EXHIBIT "A", CI-240-1.

NOTE - THE BOUNDARY OF THIS LINE IS LOCATED AT VALVE JW-5 ON DWG. 9321-F-2010

TTT F: FLOW DIAGRAM		STATION	
JACKET WATER TO DIESEL GEN.		INDIAN POINT	
DWG. NO. 9321-F-2028-36		MY	

REV	BY	DATE	DESCRIPTION	APPROVALS
10	W.J.KING	10-31-87	F.A.	
3			EC	
7				
87				
DATE	CHK	SVY	DESIGN MGR.	DISC. ENG.
REVIEW				

SYSTEM INTENDED FUNCTION BOUNDARY

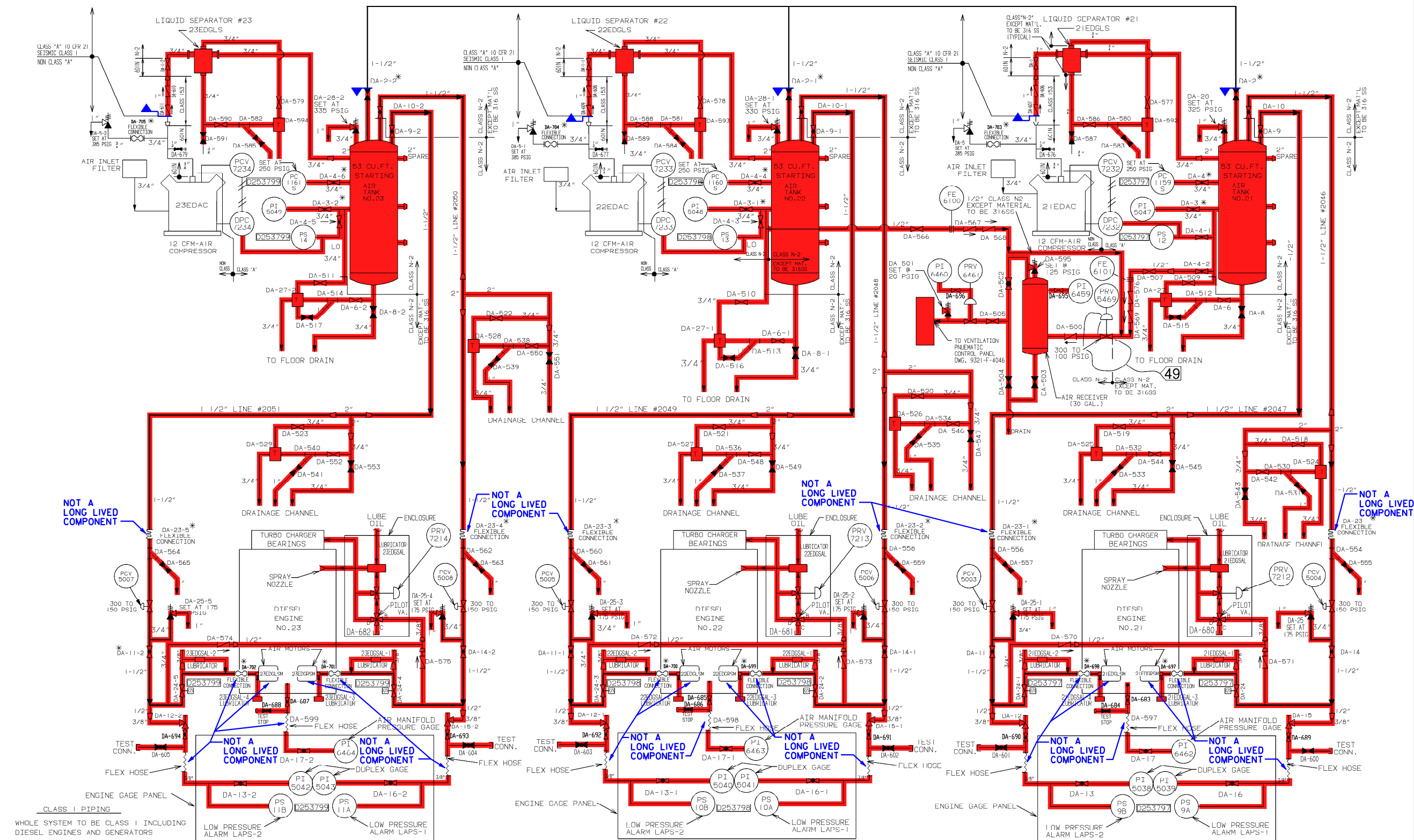
COMPONENTS SUBJECT TO AMR

SERVICE WATER SYSTEMS
AMM-12

EMERGENCY DIESEL
GENERATOR SYSTEM AMM-17

0	1-19-07				
NO.	DATE	DESCRIPTION	BY	CHK	APP
REVISIONS					
LRA-9321-2028-0					
DWG. FILE					
LRA-9321-2028_36.DGN					
PLOT FILE					
9321-2028_36.CAL					

9321-H-2029



 SYSTEM INTENDED
FUNCTION BOUNDARY

COMPONENTS SUBJECT TO AMR

**EMERGENCY DIESEL
GENERATOR SYSTEM AMM-17**

NOTE

EVERYTHING ON THIS DWG. IS PART OF THE
EMERGENCY DIESEL GENERATOR AUXILIARY
SYSTEMS DESCRIBED AS PART OF ON-SITE
EMERGENCY A.C. POWER SYSTEM, LISTED
IN EXHIBIT A CI-240-1
ALL VALVES, INSTRUMENTS, EQUIPMENT ETC.
IS SUPPLIED WITH DIESEL EXCEPT ITEMS
IDENTIFIED THUS*

REFERENCE DWGS.

UE&C. DWG. NO.	DESCRIPTION
9321-C-2016	FLOW DIAGRAM SYMBOLS
9321-F-2250	COOLING WATER PIPING RIVER WATER
9321-F-2258	FUEL OIL, STARTING AIR & JACKET WATER PI
9321-F-2259	FUEL OIL, STARTING AIR & JACKET WATER PI
9321-F-2260	FUEL OIL, STARTING AIR & JACKET WATER PI
9321-F-2261	FUEL OIL, STARTING AIR & JACKET WATER PI
UE&C. F.P. NO.	
9321-20199	FLOW DIAGRAM-STARTING AIR SYSTEM

NOTES:

1. THE QUALITY GROUP A,B,C AND SEISMIC BOUNDARIES
EXTEND TO THE FIRST SEISMIC SUPPORT/RESTRAINT
BEYOND THE BOUNDARIES SHOWN.

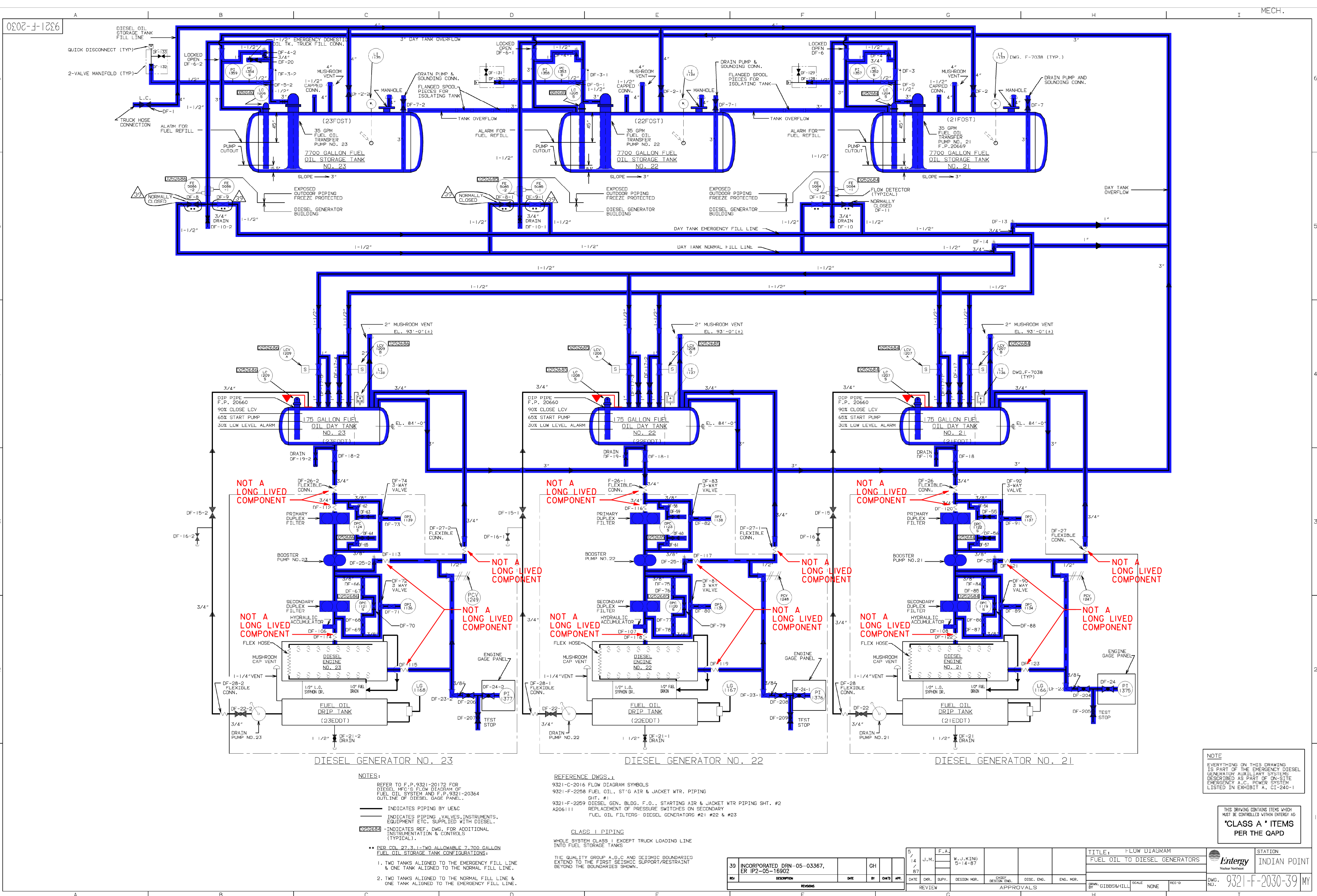
THIS DWG. TO BE REVISED ONLY IN AUTOCAD.

THIS DRAWING CONTAINS ITEMS WHICH
MUST BE CONTROLLED WITHIN ENTERGY A

"CLASS A" ITEMS
PER THE QAPD

REVISION	THIS DWG. TO BE REVISED ONLY IN APPROVAL.										9 / 1 / 87	W.S.	F.A.	W.J.KING 9-1-87			TITLE: FLOW DIAGRAM				STATION	
	DES	THIS REV. IS CLASS A PER QAPD. UPDATED DWG. PER TECHNICAL EVALUATION TE 03-00377.														STARTING AIR TO			INDIAN POINT			
	RADVANSKY 03-05-2003	ISSUED AS CONSTRUCTED. P.N. 69901-AF MPH														DIESEL GENERATORS						
	ENG		DATE	CHK. REVIEW	DESIGN ENG	DTSC. ENG.	ENG. MGR.	DRAWN BY GIBBS&HILL			SCALE NONE	REC'D	DWG. NO.	9321-H-2029-49		M						
	APPROVALS																					

0	1-19-07						
NO.	DATE	DESCRIPTION	BY	ENG	CHK	APP	
REVISIONS							
LRA-9321-2029-0							
CAD FILE							
LRA-9321-2029_49.DGN							
RASTER FILE							
9321-2029_49.CAI							



SYSTEM INTENDED
FUNCTION BOUNDARY

COMPONENTS SUBJECT TO AMR

FUEL OIL SYSTEM
AMM-21

NOTE
EVERYTHING ON THIS DRAWING
IS PART OF THE EMERGENCY DIESEL
GENERATOR AUXILIARY SYSTEMS
DESCRIBED AS PART OF ON-SITE
EMERGENCY A.C. POWER SYSTEM
LISTED IN EXHIBIT A, CI-240-1

THIS DRAWING CONTAINS ITEMS WHICH
NOT BE CONTROLLED WITHIN INTERIO AS
"CLASS A" ITEMS
PER THE QAPD

Entergy
Nuclear Northeast

STATION
INDIAN POINT

0 1-19-07
NO. DATE DESCRIPTION BY ENG CHK APP

REVISIONS

LRA-9321-2030-0

CAD FILE
LRA-9321-2030_39.DGN

PLOT FILE
9321-2030_39.CAL

39	INCORPORATED DRN-05-03367, ER IP2-05-16902	GH	OWS	APP
REV	DESCRIPTION	DATE	BY	OWS
1	INCORPORATED DRN-05-03367, ER IP2-05-16902	DATE	CHR	SLPV
2	DESIGN MGR.	DATE	CHR	SLPV
3	DISC. ENG.	DATE	CHR	SLPV
4	ENG. MGR.	DATE	CHR	SLPV
5	REVIEW	DATE	CHR	SLPV

5
14
J.M.

F.A.

W.J. KING
5-14-87

DATE

CHR

SLPV

DESIGN MGR.

DISC. ENG.

ENG. MGR.

REVIEW

APPROVALS

TITLE: FLOW DIAGRAM
FUEL OIL TO DIESEL GENERATORS

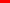
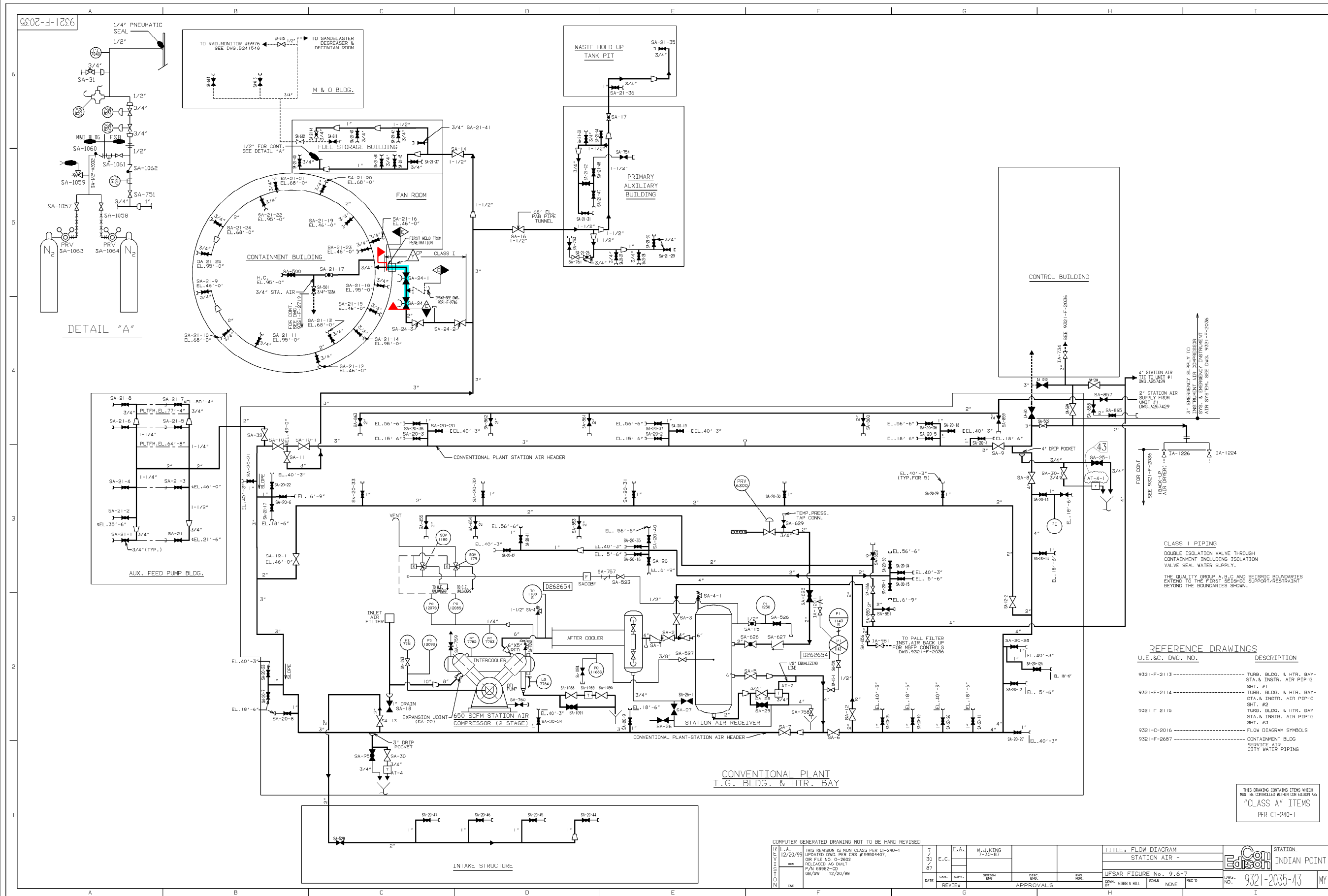
STATION: INDIAN POINT

DWG. NO.: 9321-F-2030-39

SCALE: NONE

REV: 0

APP: WY


 SYSTEM INTENDED
FUNCTION BOUNDARY

COMPONENTS SUBJECT TO AMR

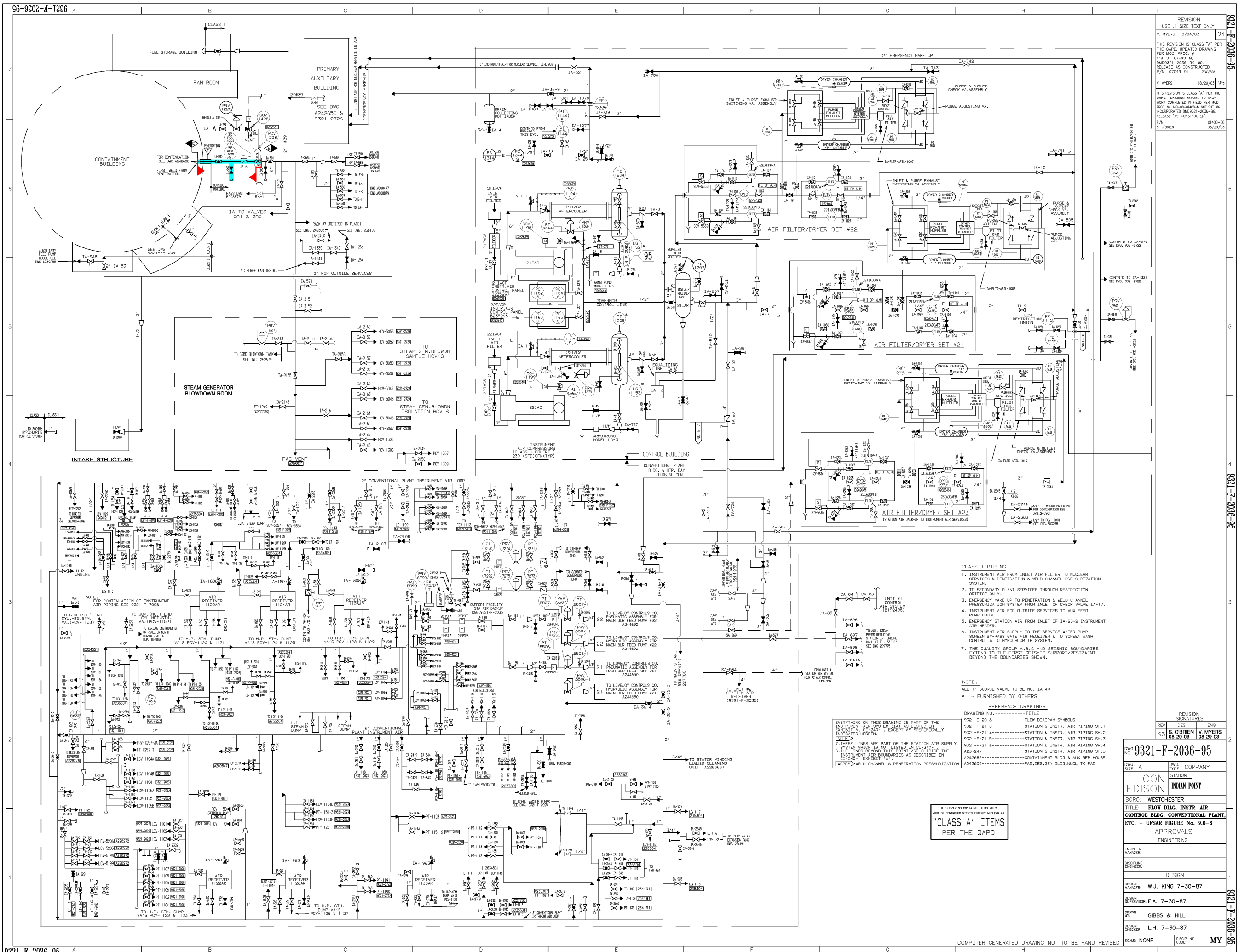
COMPRESSED AIR
SYSTEMS AMM-14

REFERENCE DRAWINGS	
U.E.&C. DWG. NO.	DESCRIPTION
9321-F-2113	TURB. BLDG. & HTR. STA. & INSTR. AIR P SHT. #1
9321-F-2114	TURB. BLDG. & HTR. OTA. & INSTR. AIR P SHT. #2
9321-F-2115	TURB. BLDG. & HTR. STA. & INSTR. AIR P SHT. #3
9321-C-2016	FLOW DIAGRAM SYMBOLS
9321-F-2687	CONTAINMENT BLDG SERVICE AIR CITY WATER PIPING

THIS DRAWING CONTAINS ITEMS WHICH
MUST BE CONTROLLED WITHIN CON EDISON AS
"CLASS A" ITEMS
PFR CT-240-1

REVISION	COMPUTER GENERATED DRAWING NOT TO BE HAND REVISED									
	1	7	F.A.	W.J.KING		TITLE, FLOW DIAGRAM				STATION
	12/20/99	30	E.C.	7-30-87		STATION AIR -				INDIAN POINT
	000	87								
	THIS REVISION IS NON CLASS PER G-240-1 UPDATED DWG PER CRS #199044407. OR FILE NO. O-2602 RELEASED AS DULT P/N 69862-00 12/20/99									
END			DATE	CHK.	SUPV.	DESIGN ENG.	SEC. ENG.	ENG. MR.	UFSAR FIGURE No. 9.6-7	
			REVIEW	APPROVALS				DWN. BY: GIBBS & HILL	SCALE NONE	REC'D
								DWG. NO.: 9321-2035-43	MY	

0	1-19-07					
NO.	DATE	DESCRIPTION	BY	ENG	CHK	APP
REVISIONS						
LRA-9321-2035-0						
CAD FILE LRA-9321-2035_4.3.DGN						
RASTER FILE 9321-2035_4.3.CAL						



REVISION
USE 1/2 SIZE TEXT ONLY

94
V. MYERS 8/04/03
THIS REVISION IS CLASS "A" PER THE GAPD. DRAWING REVISED TO SHOW WORK COMPLETED IN FIELD PER MOD. P/N 07049-91
95
V. MYERS 08/29/03
THIS REVISION IS CLASS "A" PER THE GAPD. DRAWING REVISED TO SHOW WORK COMPLETED IN FIELD PER MOD. P/N 07049-91
96
V. MYERS 08/29/03
THIS REVISION IS CLASS "A" PER THE GAPD. DRAWING REVISED TO SHOW WORK COMPLETED IN FIELD PER MOD. P/N 07049-91

COMPONENTS SUBJECT TO AMR

COMPRESSED AIR SYSTEMS AM-14

REVISION SIGNATURES

REV DES ENG

95 S. OBRIEN V. MYERS

96 S. OBRIEN V. MYERS

DWG. NO. 9321-F-2036-95

DWG. DATE 8/04/03

DWG. COMPANY CON EDISON

DWG. STATION INDIAN POINT

BORO: WESTCHESTER

TITLE: FLOW DIAG. INSTR. AIR CONTROL BLDG. CONVENTIONAL PLANT, ETC. - UFSR FIGURE No. 9.6-6

APPROVALS

ENGINEERING

DESIGN

DESIGN MANAGER: W.J. KING 7-30-87

DESIGN SUPERVISOR: F.A. 7-30-87

DRAWN BY: GIBBS & HILL

DATE: 7-30-87

SCALE: NONE

DISCIPLINE CODE: MY

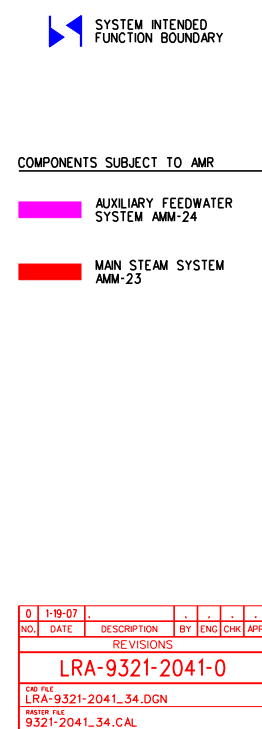
0 1-19-07

NO. DATE DESCRIPTION BY ENG CHK APP

REVISIONS

LRA-9321-2036-0


9321-2036-95.CAL



0	1-19-07					
NO.	DATE	DESCRIPTION	BY	ENG	CHK	APP
<p style="text-align: center;">REVISIONS</p> <p style="text-align: center; font-size: 1.5em;">LRA-9321-2041-0</p>						
<p>CAD FILE LRA-9321-2041_34.DGN</p>						
<p>RASTER FILE 9321-2041_34.CAL</p>						



COMPONENTS SUBJECT TO AMR

 MAIN STEAM SYSTEM
AMM-23

NOTES:

1. THE QUALITY GROUP A,B,C AND SEISMIC BOUNDARIES
EXTEND TO THE FIRST SEISMIC SUPPORT/RESTRAINT
BEYOND THE BOUNDARIES SHOWN.

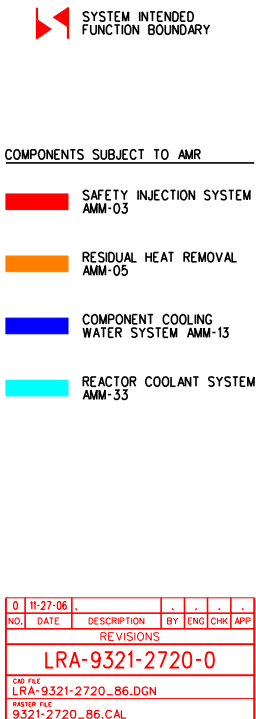
FOR REFERENCE DWG'S. SEE 9321-F-2041

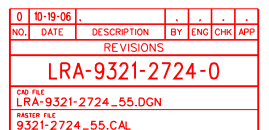
THIS DWG. TO BE REVISED ONLY IN AUTOCAD.

0	1-19-07					
NO.	DATE	DESCRIPTION	BY	ENG	CHK	APP
REVISIONS						
LRA-9321-2042-0						
CAD FILE						
LRA-9321-2042_21.DGN						
RASTER FILE						
9321-2042_21.CAL						

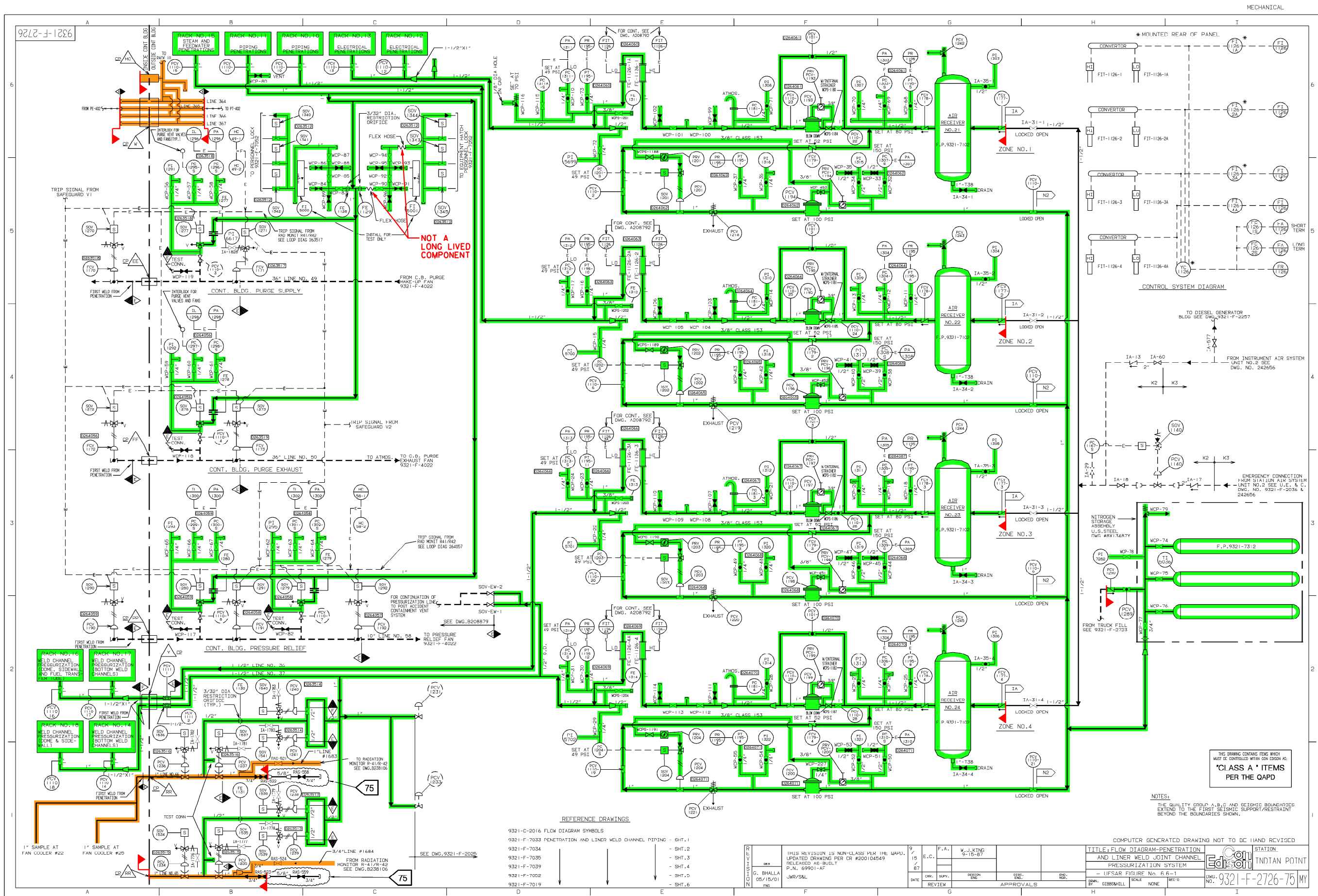
SCALE: NONE	DISCIPLINE CODE:	MY
-------------	------------------	----

9321-2719_130.CAL





THIS DRAWING CONTAINS ITEMS WHICH
MUST BE CONTROLLED WITHIN CON EDISON AS:
"CLASS A" ITEMS
PFR QAPD

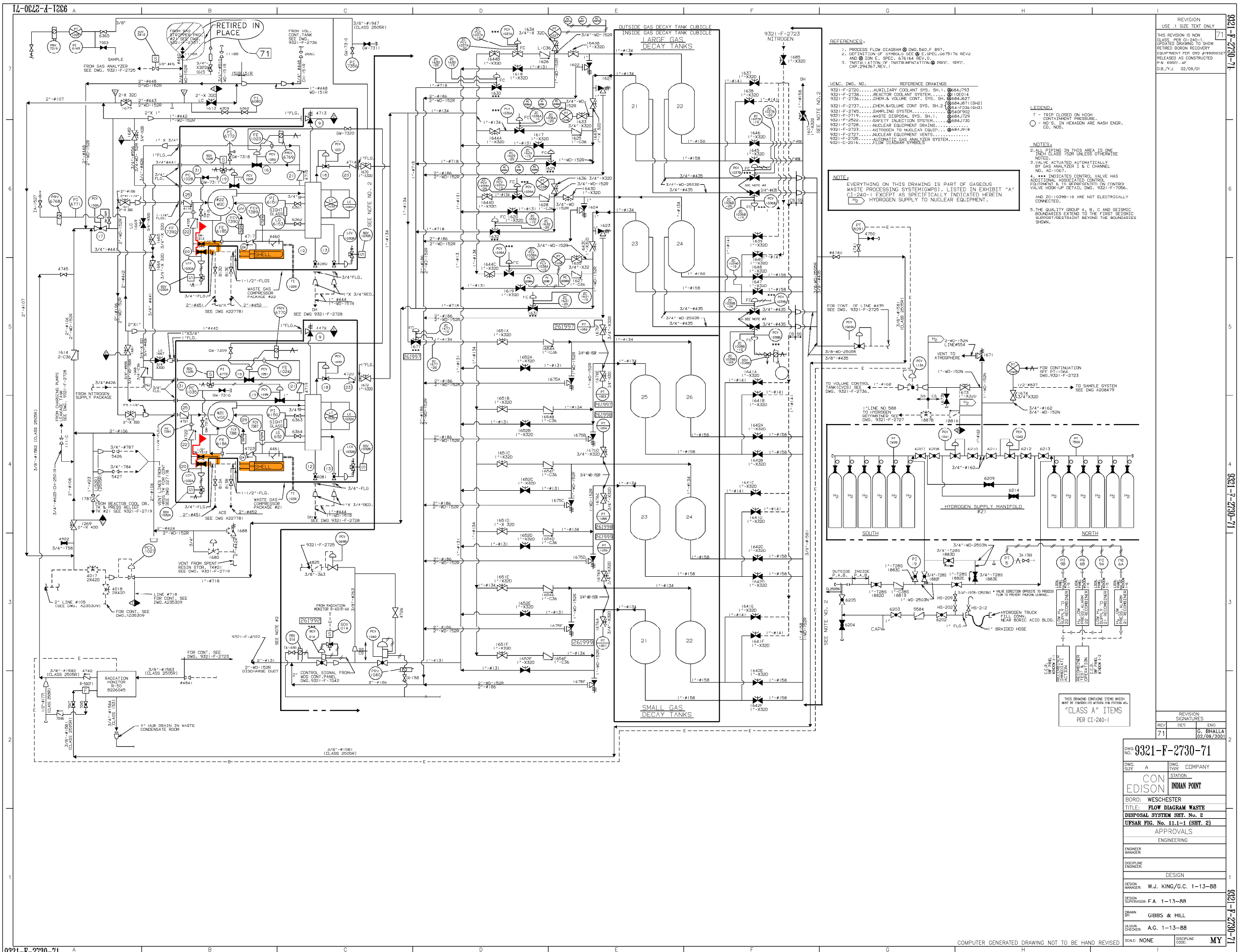




CAD FILE
LRA-9321-2729_66.DGN

RASTER FILE
9321-2729_66.CAL

THIS DRAWING CONTAINS ITEMS WHICH
MUST BE CONTROLLED WITHIN CON EDISON AS:
"CLASS A " ITEMS
PER THE QAPD



COMPONENTS SUBJECT TO AMR

COMPONENT COOLING WATER SYSTEM AMM-13

0	7-24-06				
NO.	DATE	DESCRIPTION	BY	CHK	APP
REVISIONS					
LRA-9321-2730-0					
LRA-9321-2730-71.DGN					
9321-2730-71.CAL					

0	1-19-07					
NO.	DATE	DESCRIPTION	BY	ENG	CHK	APP
REVISIONS						
LRA-9321-2735-0						
CAD FILE						
LRA-9321-2735_136.DGN						
RASTER FILE						
9321-2735_136.CAL						