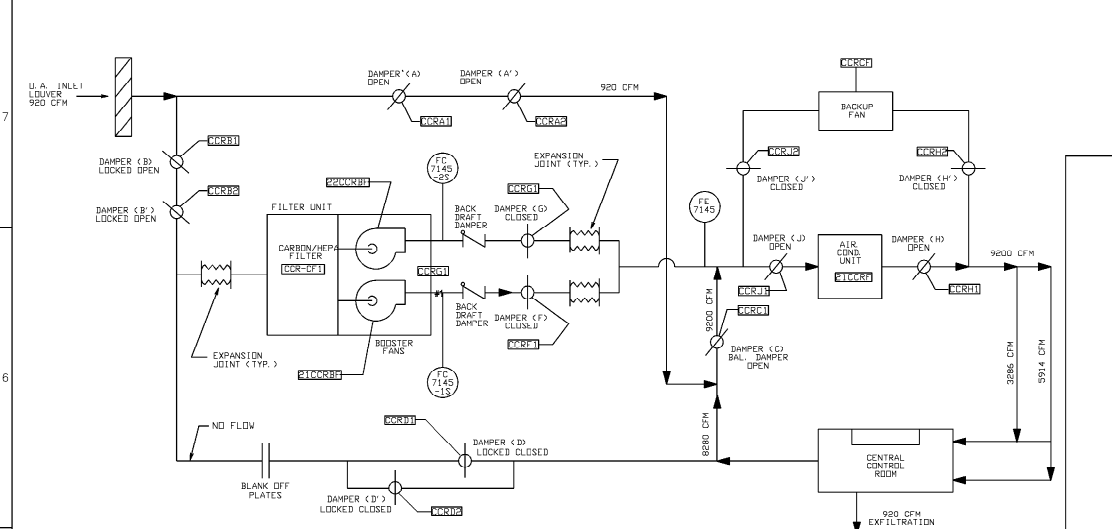


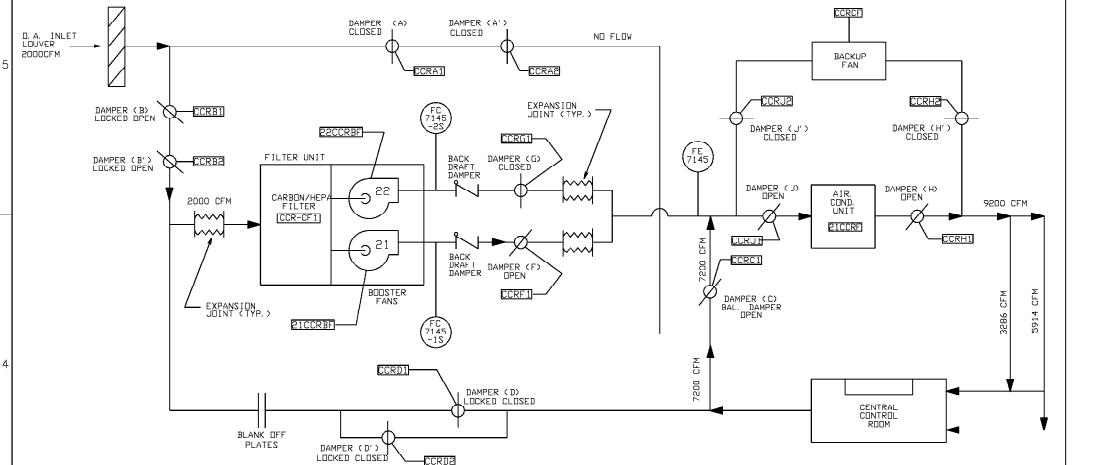
THIS DRAWING CONTAINS ITEMS WHICH
MUST BE CONTROLLED WITHIN ENTERY AS:
'CLASS A' ITEMS
PER THE QAPD

THIS DWG. TO BE REVISED ONLY IN AUTOCAD

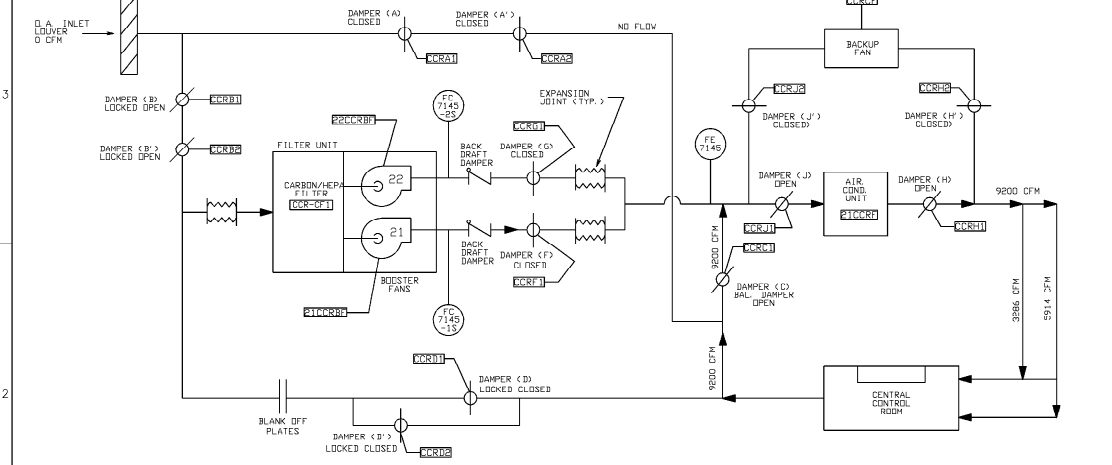
0	1-19-07					
NO.	DATE	DESCRIPTION	BY	ENG	CHK	APP
<div style="text-align: center;"> REVISIONS LRA-251783-0 </div>						
CAD FILE LRA-251783_28.DGN						
RASTER FILE 251783_28.CAL						



(1) NORMAL OPERATION
OUTSIDE AIR MAKEUP

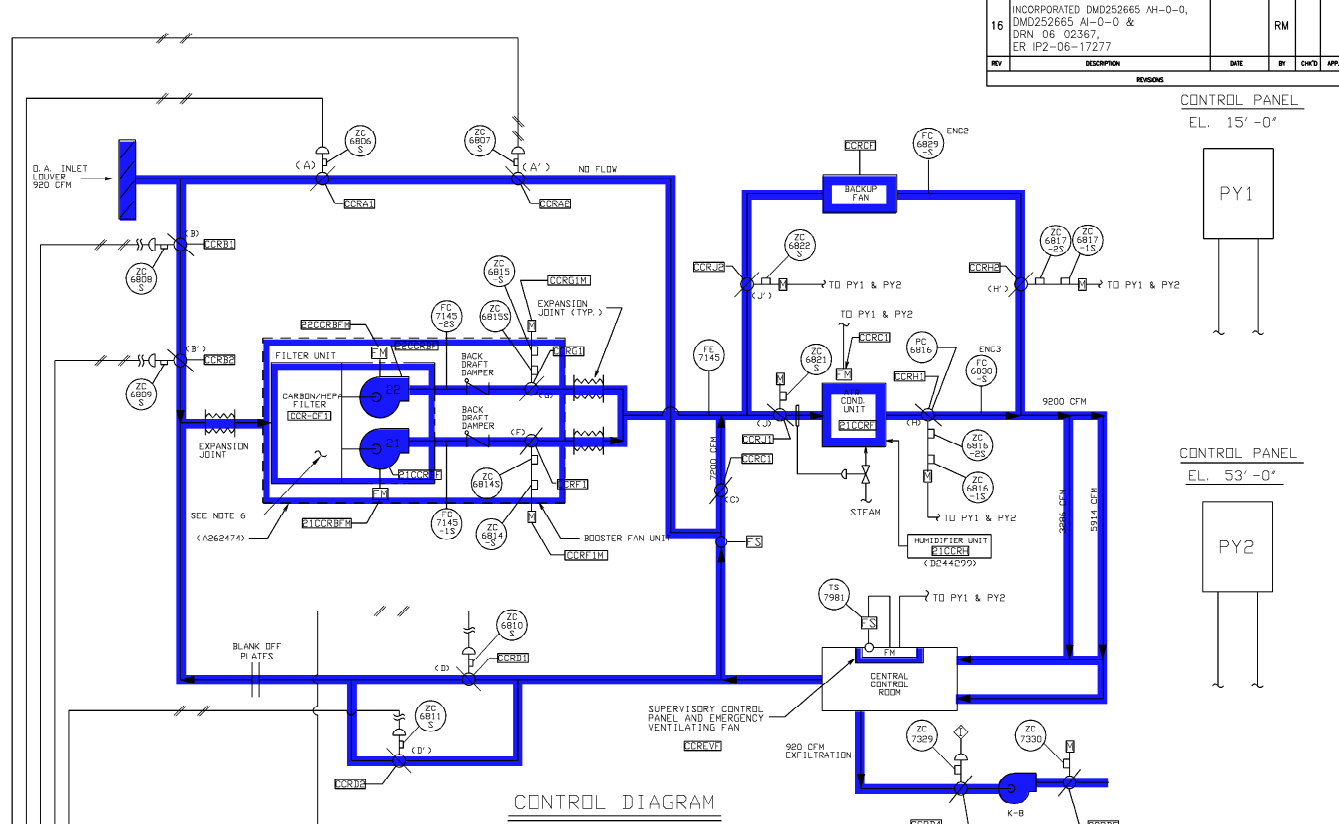


(2) INCIDENT - OUTSIDE
AIR FILTERED PRESSURIZATION
S. I. OR HIGH RADIATION



(3) INCIDENT 100% RECIRCULATION MODE
TOXIC GAS OR SMOKE

AIR FLOW DIAGRAMS



CONTROL DIAGRAM

LEGEND

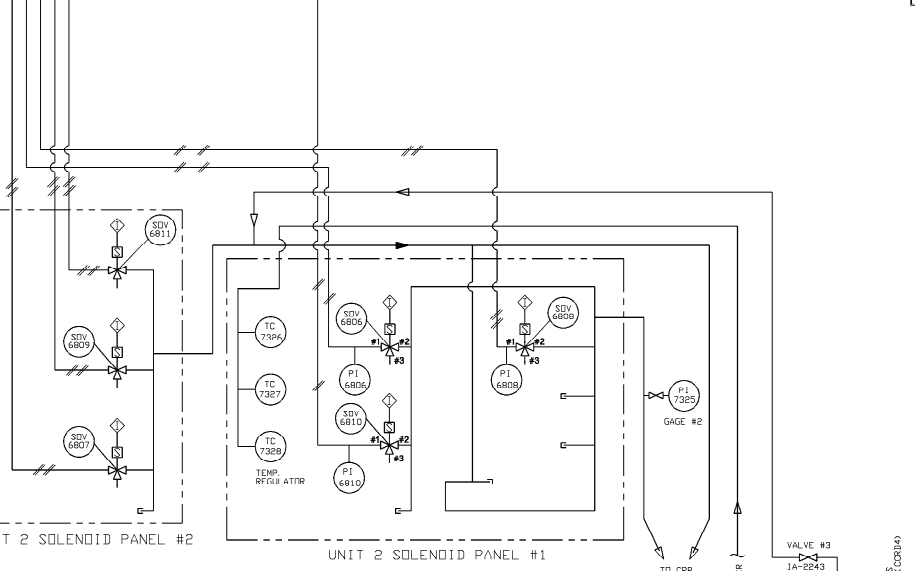
- O.A. - OUTSIDE AIR
- F.S. - FIRE STAT
- F.M. - FAN MOTOR
- D.M. - DAMPER MOTOR
- FC XXXX - FLOW SWITCH
- FE XXXX - FLOW MEASUREMENT DEVICE
- SV XXXX - SOLENOID VALVE
- PC XXXX - POSITION CONTROLLER

REFERENCE DRAWINGS

- 9321-F-4017 - CONTROL BUILDING -HVAC- PLANS.
- 9321-F-4050 - CONTROL BUILDING -HVAC- SECTIONS.
- 9321-F-4055 - CONTROL BUILDING - COOLING WATER TO AIR COND. UNIT.
- A226948 - CENTRAL CONTROL RM. HVAC SYSTEM DAMPERS AND REDUNDANCY.
- A226936 - SUPPLY DWS MODIFICATION OF CCR VENTILATION SYSTEM.
- 9321 F 3147 - CONDUIT LAYOUT CONTROL ROOM AIR CONDITIONING
- A262474 - CARBON FILTER UNIT (SHEET 1 OF 2)
- B244299 - CCR HUMIDIFIER FLOW DIAGRAM
- 192498 - PIPING FLOW DIAGRAM-CONTROL AIR SYSTEM

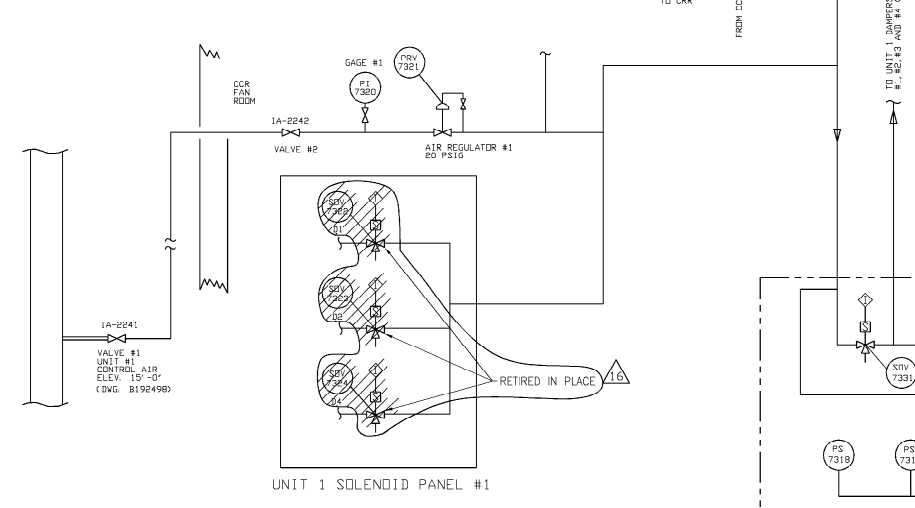
NOTES

- DAMPERS 'J' & 'H' ARE NORMALLY CLOSED. OPEN WHEN A.C. FAN IS OFF. (BACKUP FAN ON)
- DAMPERS 'J' & 'H' ARE NORMALLY OPEN. CLOSED WHEN A.C. FAN OFF. (BACKUP FAN ON)
- 'O' = 'O' DESIGNATED EQUIPMENT NO.
- AIRFLOW RATES (CFM) SHOWN ON THIS FLOW DIAGRAM DRAWING ARE FOR DESIGN CONDITIONS ONLY.
- DAMPER 'D' & 'D' WILL REMAIN CLOSED ON LOSS OF POWER OR AIR
- CCR-CF1 FILTER TAG NUMBERS:
 - HLPA 1 (LILM, CLMHP)
 - CARBON FILTER STACK A (CCRCFA)
 - CARBON FILTER STACK B (CCRCFB)
 - POST FILTER (CCRCFP)



UNIT 2 SOLENOID PANEL #2

UNIT 2 SOLENOID PANEL #1



UNIT 1 SOLENOID PANEL #1

UNIT 1 SOLENOID PANEL #2

CONTROL AIR SUPPLY

REVISION
USE .1 SIZE TEXT ONLY

REV	DESCRIPTION	DATE	BY	CHK	APP
16	INCORPORATED DMD252665 AH-0-0, DMD252665 AI-0-0 & DRN 06 02367, ER IP2-06-17277				

CONTROL PANEL
EL. 15'-0"

PY1

CONTROL PANEL
EL. 53'-0"

PY2

REVISION SIGNATURES

REV	DES	ENG
00		

DWG. NO. 252665-16

DWG. SIZE A

DWG. COMPANY Intertec

DWG. STATION INDIAN POINT

BORO: WESTCHESTER

TITLE: CONTROL BUILDING (CCR)

CONTROL AND AIR FLOW DIAGRAMS

UFSAR FIGURE NO. 9.9-1

APPROVALS

ENGINEERING

ENGINEER

MANAGER

DISCIPLINE ENGINEER

DESIGN

DESIGN MANAGER: M. J. CAPUTO 12/30/93

DESIGN SUPERVISOR: A. D.

DRAWN BY:

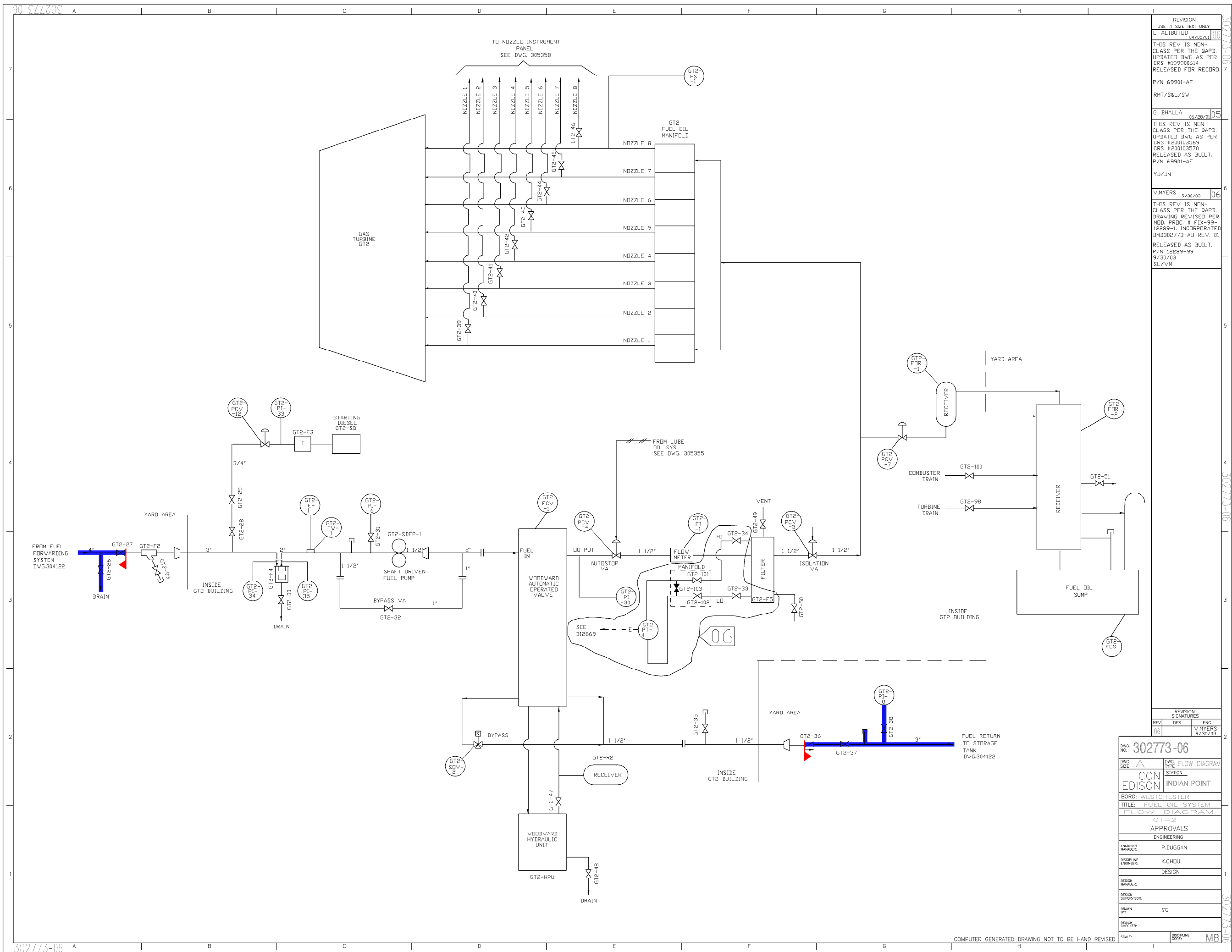
DESIGN CHECKER: E. D.

SCALE: NONE

DISCIPLINE CODE: MY

SYSTEM INTENDED
FUNCTION BOUNDARY

COMPONENTS SUBJECT TO AMR
CONTROL ROOM
HEATING, VENTILATION AND
AIR CONDITIONING SYSTEMS
AMM-29



REVISION	
USE 1 SIZE TEXT ONLY	
L ALIBUTO	04/05/01
THIS REV IS NON-CLASS PER THE GPD.	
UPDATED DWG AS PER CRS #1199900614	
RELEASED FOR RECORD	
P/N 61901-AF	
RMT/S&L/SW	
G. BHALLA	
	06/28/01
THIS REV IS NON-CLASS PER THE GPD.	
UPDATED DWG AS PER CRS #E00103569	
CRS #E00103570	
RELEASED AS BUILT.	
P/N 61901-AF	
Y/J/JN	
V.MYERS	
	9/30/03
THIS REV IS NON-CLASS PER THE GPD.	
DRAWING REVISED PER MOD. PROC. # FIX-99-12289-1, INCORPORATE	
DMD302773-A REV. 0	
RELEASED AS BUILT.	
P/N 12289-99	
9/30/03	
SL/VZ	

REVISION SIGNATURES		
RFV	DFS	ENG
06		V.MYERS 9/30/03

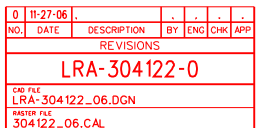
DWG. NO.	302773-06	
DWG. SIZE	A	DWG. TYPE
CON EDISON		FLOW DIAGRAM
BORO: WESTCHESTER		STATION
TITLE: FUEL OIL SYSTEM		INDIAN POINT
FLOW DIAGRAM		
GT-2		
APPROVALS		
ENGINEERING		
DESIGN MANAGER	P. DUGGAN	
DISCIPLINE ENGINEER	K. CHOU	
DESIGN		
DESIGN MANAGER		
DISCIPLINE SUPERVISOR		
DRAWN BY	SG	
CHECKER		
SCALE	DISCIPLINE CODE	MF

 SYSTEM INTENDED
FUNCTION BOUNDARY

COMPONENTS SUBJECT TO AMR

FUEL OIL SYSTEM
AMM-21

0	6-15-06					
NO.	DATE	DESCRIPTION	BY	ENG	CHK	AI
REVISIONS						
LRA-302773-0						
CAD FILE						
LRA-302773_06.DGN						
RASTER FILE						
302773_06.CAI						



308762-03

4

3

2

1

308762-03

B

C

D

E

F

G

REFERENCE DWGS.

A242688 FLOW DIAG INSTR. AIR CONT. BLDG. & AUX. BLR. FEED PUMP
A235296 FLOW DIAG SAFETY INJECTION SYSTEM
A235306 FLOW DIAG NITROGEN TO NUCLEAR EQUIPMENT
A2240128 BLR. FEEDWATER LEVEL & FLOW INSTRUMENTATION SIM. GEN.#21 IHRU #24
9321-2019 FLOW DIAG. BLR FEEDWATER

REVISION
USE 1/2" SIZE TEXT ONLY
G. BHALLA
12/19/02
03
THIS REVISION IS CLASS "A"
PER THE QAPD. UPDATED
DWG PER CR #1P-2-2002-10674.
CHANGED TAGS LABELED
"IIP" TO "IIP" & TRANSFERRED
TAG NUMBERS FROM
DMD08065-AC REV. 00.
RELEASED AS BUILT.
P.N. 69901-AF D.B./G.B.

308762-03

4

3

2

1

308762-03

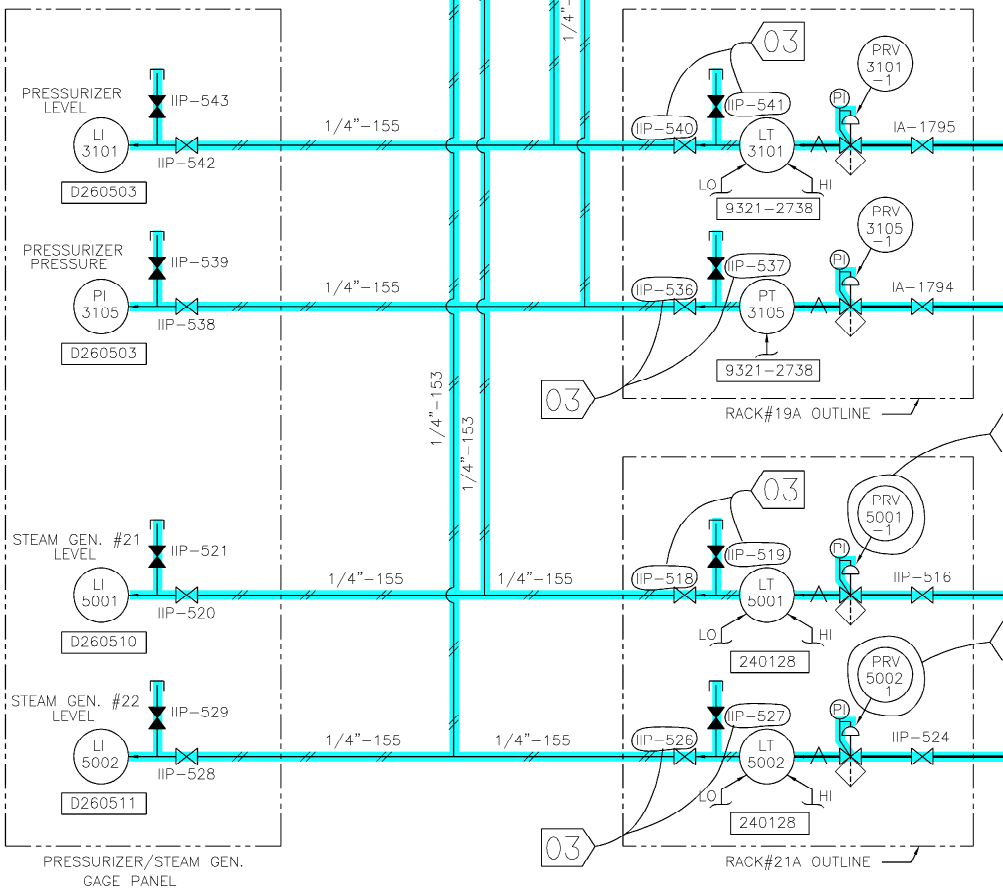


INSTRUMENT PANEL OUTLINE
SEE DWG.A209561

PIPE PENETRATION

INSIDE CONTAINMENT BLDG.

THIS DRAWING CONTAINS ITEMS WHICH
MUST BE CONTROLLED WITHIN ENTERGY NUCLEAR AS
"CLASS A" ITEMS
PER THE QAPD



2" INSTR. AIR/NITROGEN SUPPLY
VALVE MANIFOLD

INSTR. AIR/NITROGEN SUPPLY VALVE
MANIFOLD RACK OUTLINE
SEE DWG.A208065

COMPUTER GENERATED DRAWING NOT TO BE HAND REVISED

REVISION SIGNATURES	
REV	PROJECT ENGINEER
03	G. BHALLA 12/19/02
DWG. NO. 308762-03	
CON EDISON	DWG. TYPE COMPANY
LOCATION: WESTCHESTER	DWG. SIZE B
TITLE: IA/N2 SUPPLY TO PRESSURIZER & STM. GEN. INSTR. FLOW DIAGRAM	
- APPROVALS -	
ENGINEERING MANAGER:	P. DUGGAN
PROJECT ENGINEER:	D. DESAI 01-09-97
DESIGNER:	GACULA
DRAWN BY:	WG
SCALE: NONE	DISCIPLINE CODE: MI

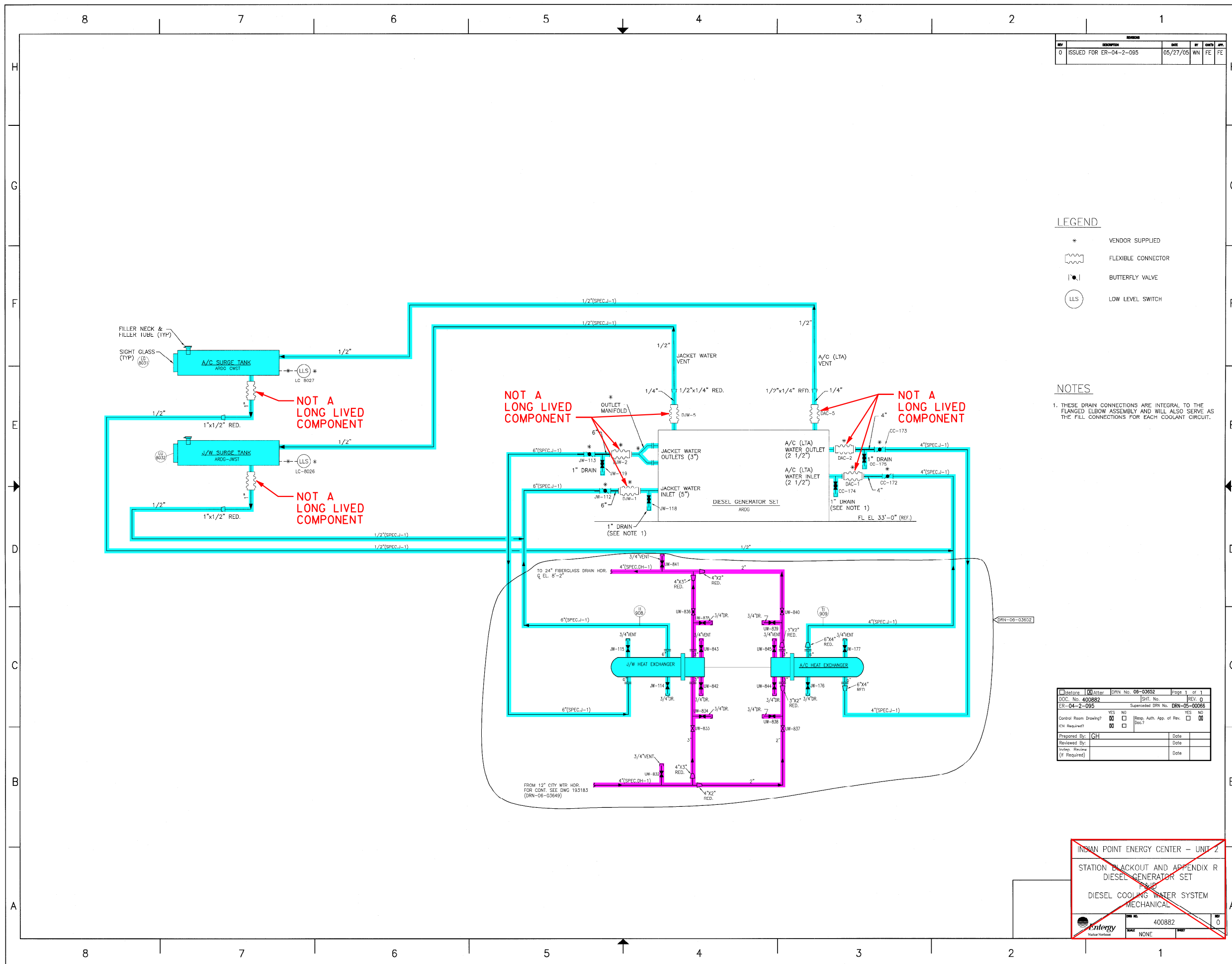
SYSTEM INTENDED
FUNCTION BOUNDARY

COMPONENTS SUBJECT TO AMR

NITROGEN SYSTEMS AMM-10

COMPRESSED AIR
SYSTEMS AMM-14

0	9-28-06								
NO.	DATE	DESCRIPTION	BY	ENG	CHK	APP			
REVISIONS									
LRA-308762-0									
CAB FILE									
LRA-308762_03.DGN									
PAPER FILE									
308762_03.CAL									

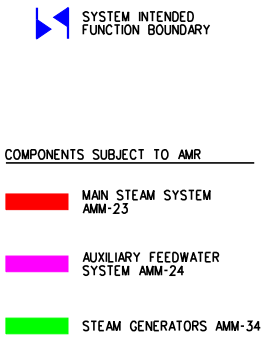
 SYSTEM INTENDED
FUNCTION BOUNDARY

COMPONENTS SUBJECT TO AMR

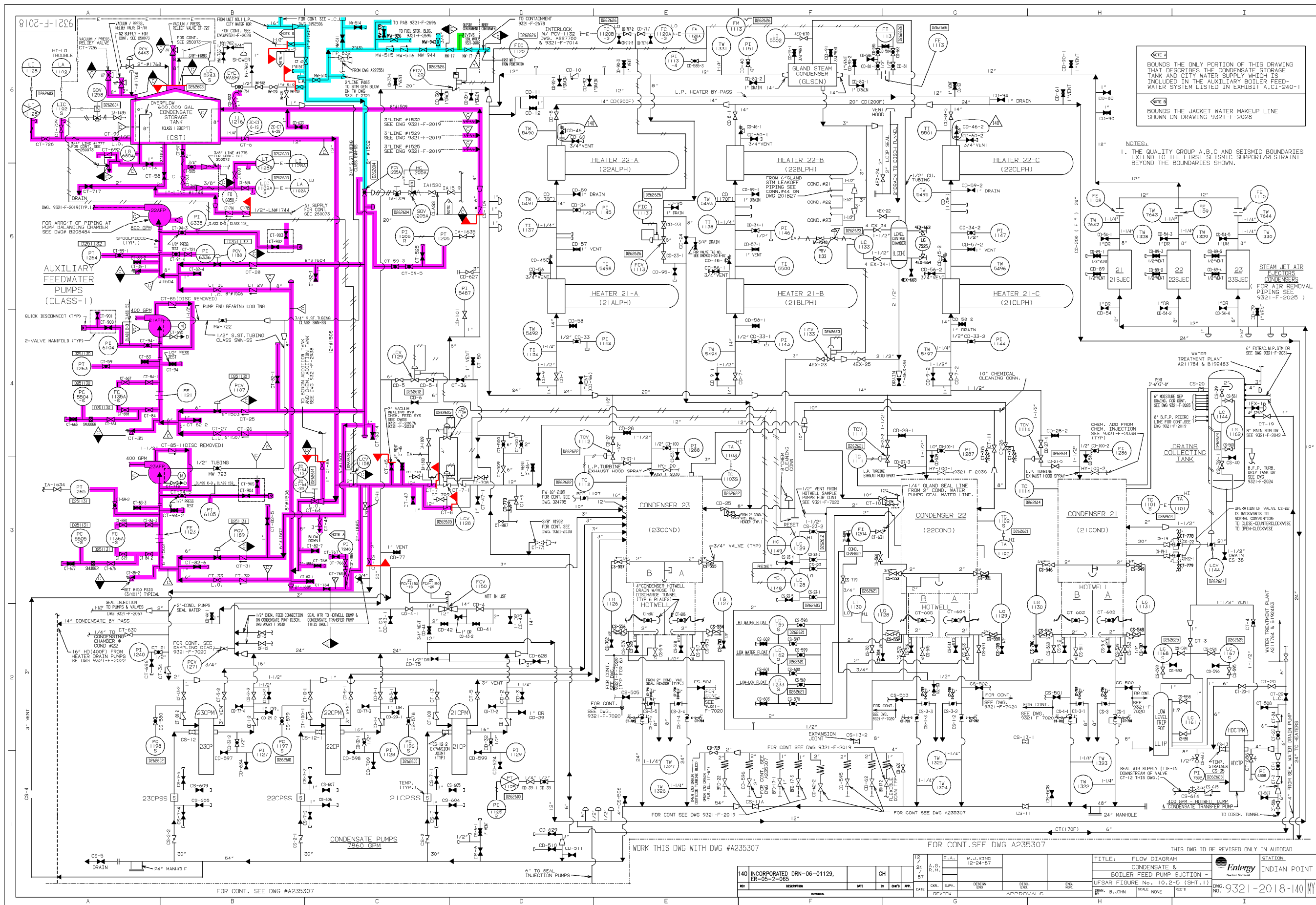
CITY WATER SYSTEM
AMM-04STATION BLACKOUT AND
APPENDIX R DIESEL
GENERATOR SET AMM-20

THIS LRA DRAWING
IS BASED ON AN
UNAPPROVED SITE
DRAWING

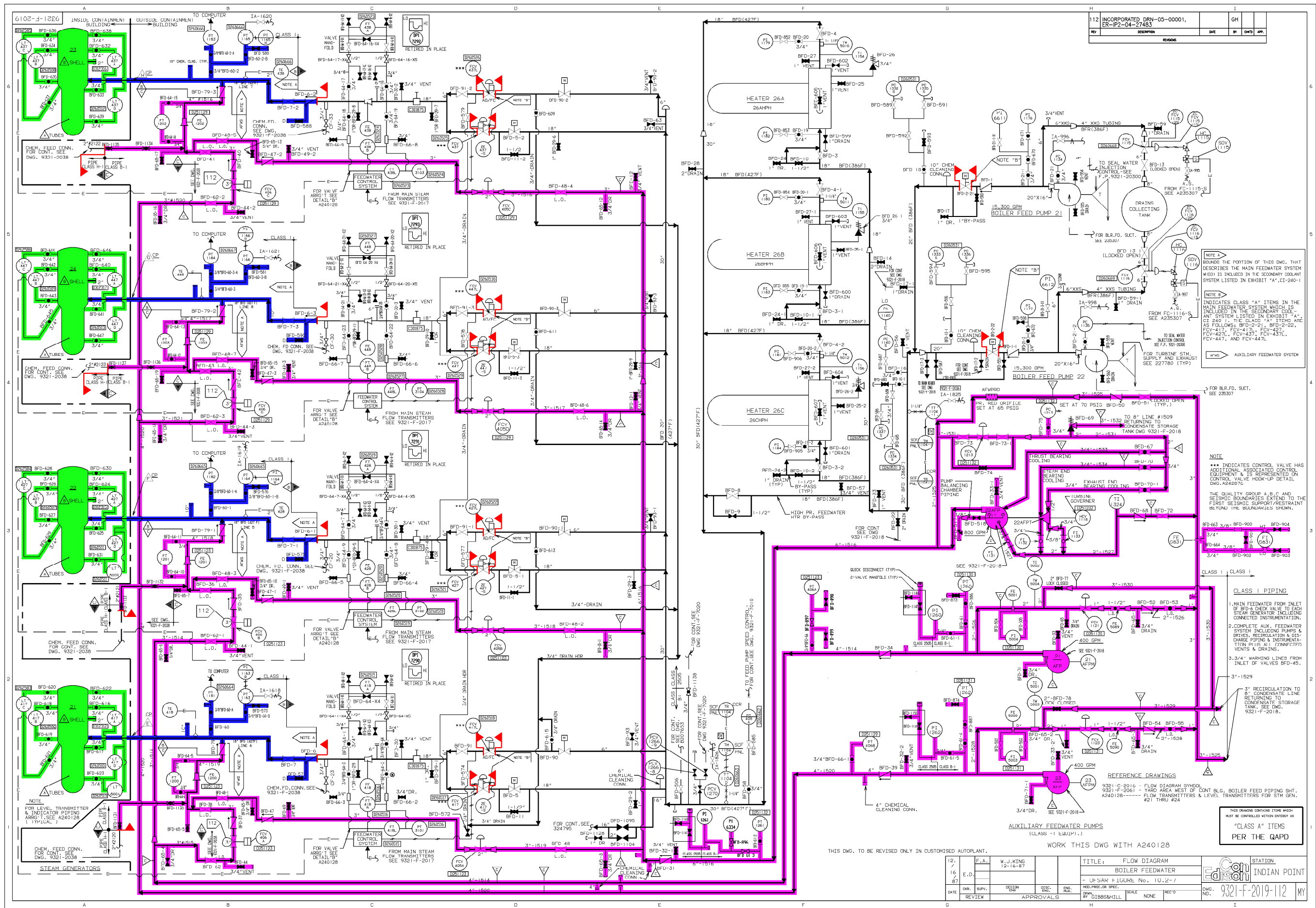
0	3-13-07				
NO.	DATE	DESCRIPTION	BY	ENG	CHK
REVISIONS					
LRA-400882-0					
CAD FILE					
LRA-400882_NR1.DGN					
RASTER FILE					
400882_1.CAL					



0	1-19-07					
NO.	DATE	DESCRIPTION	BY	ENG	CHK	APP
REVISIONS						
LRA-9321-2017-0						
CAD FILE						
LRA-9321-2017_83.DGN						
RASTER FILE						
9321-2017_83.CAL						



0	1-2-07				
NO.	DATE	DESCRIPTION	BY	CHK	APP
REVISIONS					
LRA-9321-2018-0					
LRA-9321-2018-140.DGN					
9321-2018-140.CAL					



SYSTEM INTENDED FUNCTION BOUNDARY

COMPONENTS SUBJECT TO AMR

- AUXILIARY FEEDWATER SYSTEM AMM-24
- MAIN FEEDWATER AMM-27
- STEAM GENERATORS AMM-34

CLASS A PIPING

1. MAIN FEEDWATER FROM INLET OF BOILER FEED PUMP TO EACH STEAM GENERATOR INCLUDING CONNECTED INSTRUMENTATION.
2. COMPLETE AUX. FEEDWATER SYSTEM INCLUDING PUMPS & DRIVES, REGULATOR & DISCHARGE PIPING & INSTRUMENTATION PLUS ALL CONNECTED VENTS & DRAINS.
3. 3/4" WARMING LINES FROM INLET OF VALVES BFD-49.

THIS DRAWING CONTAINS STORE WHICH MUST BE CONTROLLED WITHIN ENTRY AS PER THE QAPD

NO.	DATE	DESCRIPTION	BY	ENG	CHK	APP
0	9-13-06					

REVISIONS

LRA-9321-2019-0

LRA-9321-2019-112.DGN

9321-2019-112.CAL

