

DESCRIPTION OF LITHOLOGY

0'-15' Silty sand, red brown, medium grained, firm
 15'-75' Clayey sand, red brown & yellow, medium grained, firm to soft
 75'-86' Sand & shell, red to white, partially cemented, hard
 86'-140' Sand, gray green, dense, partially cemented, brownish, medium to fine grained silty sand below 105'
 140'-180' Clayey sand, medium grained, occasional beds of clay, firm
 180'-230' Sand, medium to coarse, streaks of clayey sand
 230'-300' Sand with lenses of clayey sand, medium grained, dense to soft
 300'-310' Sand, gray, medium to fine grained, some shell fragments, occasional clay
 310'-340' Sand and silty sand, gray to red, with lenses of clay, carbon & shell fragments
 340'-385' Sand, clay, green, with interbeds of silty sand, red brown. Dense to firm, some shells, carbonaceous chert, some thin sand lens.
 385'-394' Sand, gray, little fine mica, micaceous (micaceous)
 394'-414' Silty sand, red brown, fine to medium grained, fine mica flakes
 414'-424' Sand, gray, little fine mica, micaceous, loose
 424'-470' Sand and clay, red brown and white, dense, interbedded, some kaolinite
 470'-524' Sand, gray, medium to coarse grained, occasional streaks of soft dark gray clay, some fine sand and silt
 524'-534' Clayey sand, dark gray, medium to fine grained, carbonaceous inclusions in clay
 534'-475' Silty sand, tan to gray, fine to medium grained, micaceous, some interbeds of sand, dense
 475'-484' Clayey sand, tan, fine to medium grained, firm
 484'-716' Sand, gray, little to no fines, firm
 716'-721' Sandy clay, dark gray, dense
 721'-740' Sand & silt, tan to gray, fine to medium grained, beds 2 to 5 ft. thick, firm
 740'-761' Sand, gray, little fines, medium grained, firm
 761'-780' Sand, clay, red & white, little sand, dense
 780'-812' Sand with some streaks of clay, firm to soft, medium to fine grained
 812'-861' Sand, gray, only occasional streaks of clay, medium to coarse grained
 861'-888' Sandy clay, red brown & gray, firm
 888'-895' Silty sand, tan to gray, firm to soft
 895'-928' Sand, clay, brick red & white, with few thin beds of fine grained sand
 Bottom of pilot hole 928'

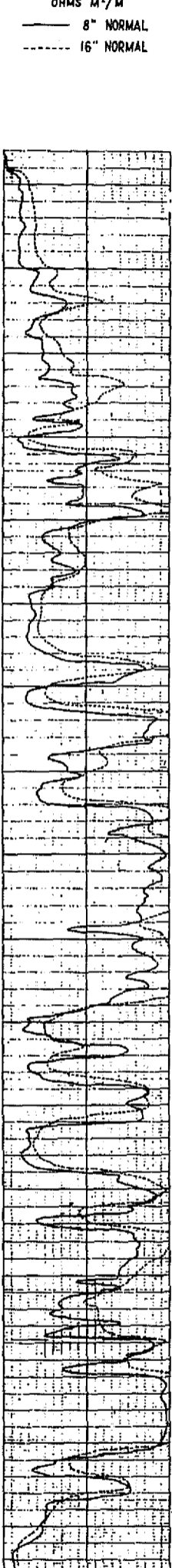
HOLE DIAM. IN INCHES



SPONTANEOUS POTENT. MILLIVOLTS



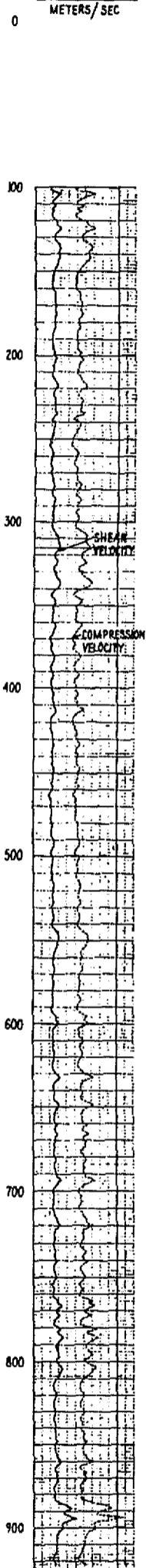
RESISTIVITY OHMS M²/M



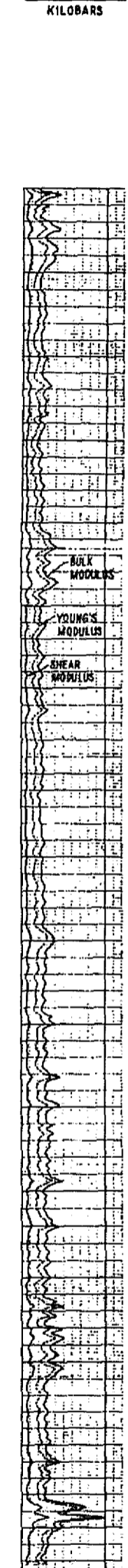
GAMMA RAY API UNITS



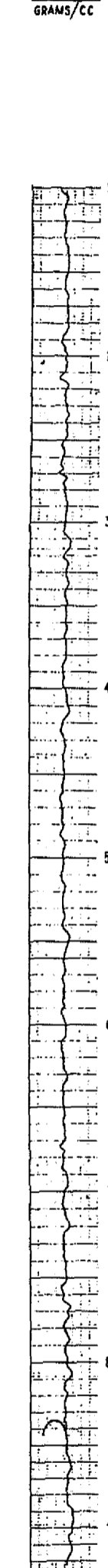
INTERVAL VELOCITY METERS/SEC



ELASTIC MODULI KILOBARS



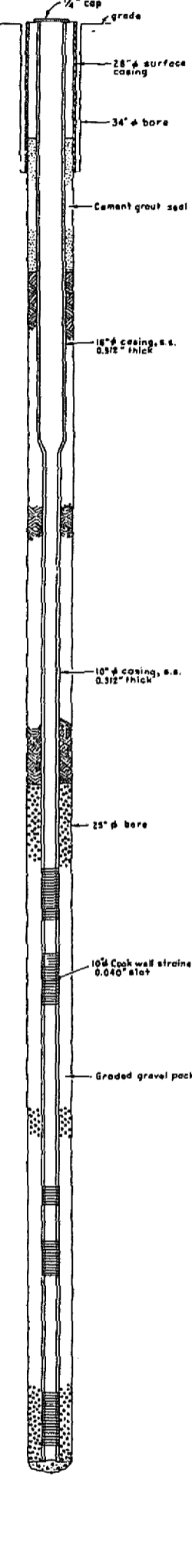
BULK DENSITY GRAMS/CC




POISSON'S RATIO



CONSTRUCTION OF WELL



TW-1


ALVIN W. VOGTLE
 NUCLEAR PLANT
 UNITS 1, 2, 3 & 4

DRILLING LOG OF
 STANDBY MAKEUP TEST WELL,
 FIGURE 3K-6