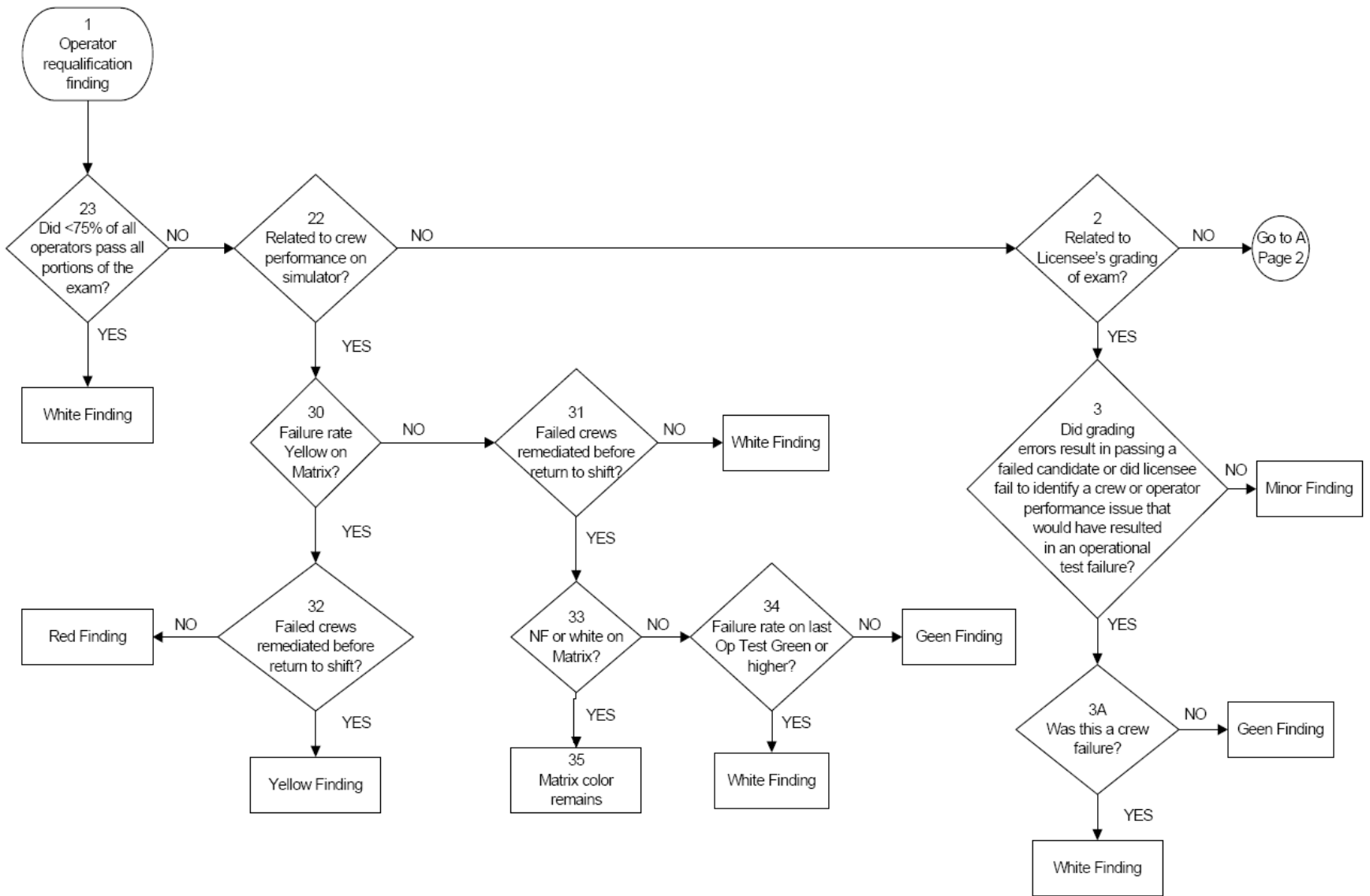


Operator Requalification and Human Performance SDP

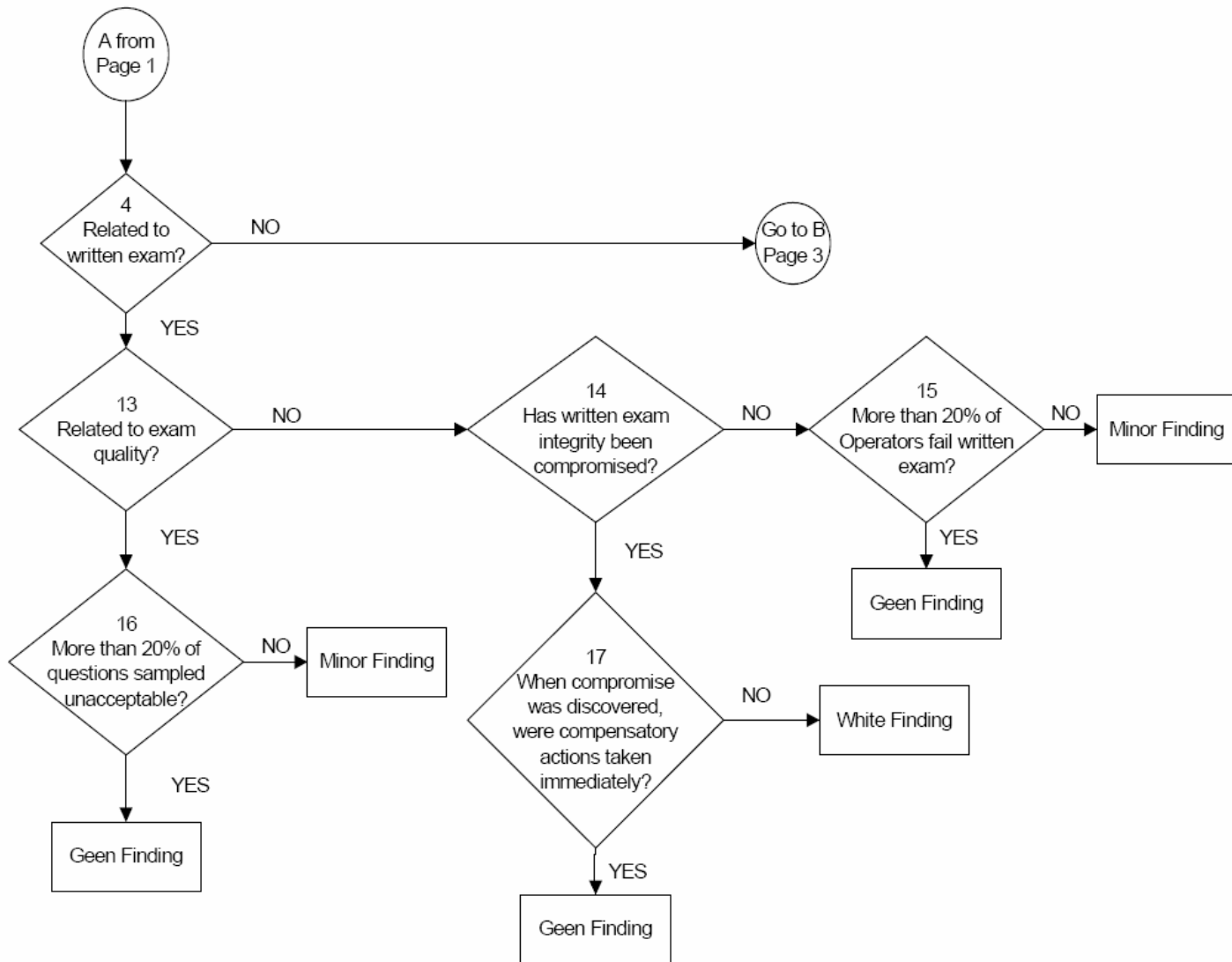
Sample Performance Issue #1

- Inspectors identify potential problem with station implementation and/or effectiveness of SAT-based training program after 3 of 5 licensed operating crews fail annual operating test. Review of past annual operating test results indicate that these 3 crews demonstrated similar weaknesses during last annual operating test.



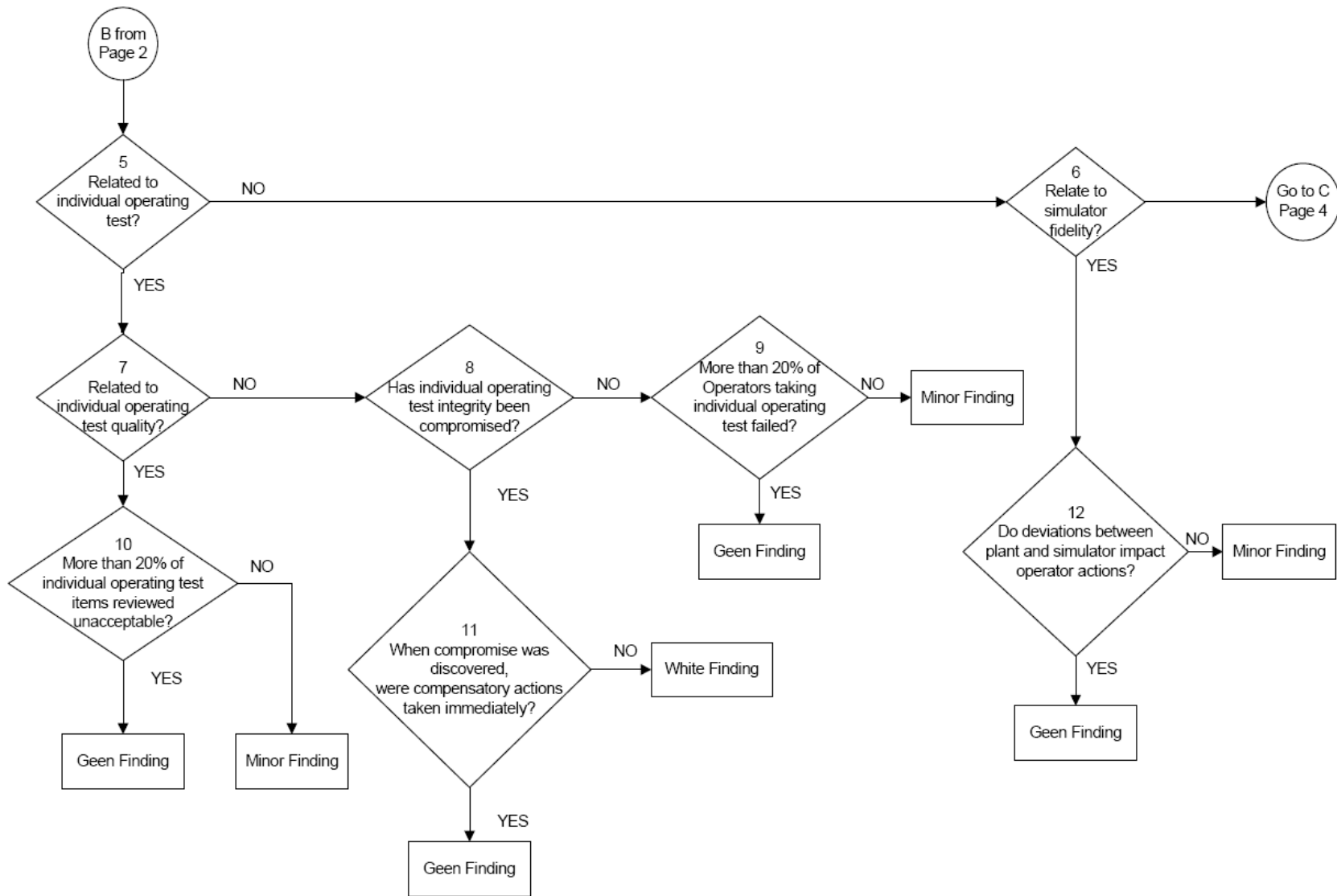
Sample Performance Issue #2

- Inspectors identify that ILT Program Administrator, after exposure to draft initial exam materials, has been revising training program schedules and objectives to refresh applicants on topic areas that had been previously covered or omitted from the initial training schedule.



Sample Performance Issue #3

- Inspectors identify that simulator testing practices are not adequate to assure good simulator modeling of referenced plant. Detailed analysis of key simulator parameters confirm that simulator response during transients and DBA differs substantially from reference plant.



Sample Performance Issue #4

- Inspectors determines that LORT practices compromised operating test validity. During LORT, multiple instances were identified where operating crews were allowed to validate and train on scenarios very similar to those used for their annual operating examination.

