



Research Reactor Center

University of Missouri-Columbia

1513 Research Park Drive
Columbia, MO 65211

PHONE (573) 882-4211

FAX (573) 882-6360

WEBSITE <http://web.missouri.edu/~murrwww>

June 8, 2007

U.S. Nuclear Regulatory Commission
ATTN: Document Control Desk
Mail Station P1-37
Washington, DC 20555-0001

Reference: Docket 50-186
University of Missouri – Columbia Research Reactor
Amended Facility License R-103

Enclosed is a request to amend the Technical Specifications appended to Facility License R-103 pursuant to 10 CFR 50.59(c) and 10 CFR 50.90.

If you have any questions, please contact Leslie P. Foyto, the facility Reactor Manager, at (573) 882-5276.

Sincerely,

Ralph A. Butler, P.E.
Director

RAB/djr

Enclosures:

A020
NRK



Research Reactor Center

University of Missouri-Columbia

1513 Research Park Drive
Columbia, MO 65211

PHONE (573) 882-4211

FAX (573) 882-6360

WEBSITE <http://web.missouri.edu/~murrwww>

June 8, 2007

U.S. Nuclear Regulatory Commission
ATTN: Document Control Desk
Mail Station P1-37
Washington, DC 20555-001

REFERENCE: Docket 50-186
University of Missouri – Columbia Research Reactor
Amended Facility License R-103

SUBJECT: Written communication as specified by 10 CFR 50.4(b)(1) requesting U.S. Nuclear Regulatory Commission approval to amend the Technical Specifications appended to Facility License R-103 pursuant to 10 CFR 50.59(c) and 10 CFR 50.90

The University of Missouri Research Reactor (MURR) is requesting a change to the facility Technical Specifications (TSs) that modifies the organization for the management and operation of the reactor by re-inserting the Office of the Chancellor in Section 6.0 of the MURR TSs as the primary University official responsible for its activities.

Recall that by letter dated December 19, 2003, the U.S. Nuclear Regulatory Commission (NRC) required that the MURR remove the Chancellor's Office from this role as a result of NRC and University concerns regarding potentially inadequate levels of oversight from that entity. Since that time, the MURR has significantly improved its safety culture and has implemented a Corrective Action Program unparalleled by other research reactors in the United States.

In addition, the MURR has expanded its activities, a new Chancellor is now in place, and oversight expectations have been clarified. The facility has implemented all of the activities required by that Order and continues to implement self-initiated safety culture improvement efforts. As such, it is appropriate at this time to return the Chancellor's Office into the chain of command for this significant University undertaking - operating one of the largest research reactors in the United States. The Office of the Chancellor is the appropriate level within the University organization to ensure that performance improvement efforts are not diluted and continue to be effective as the MURR continues to strive for excellence as it operates the reactor in a safe manner.

Attached is the TS page that will implement the requested change. If there are questions regarding this request, please contact me at (573) 882-5276. I declare under penalty of perjury that the foregoing is true and correct.

Sincerely,

Leslie P. Foyto
Reactor Manager

ENDORSEMENT:
Reviewed and Approved,

Ralph A. Butler, P.E.
Director

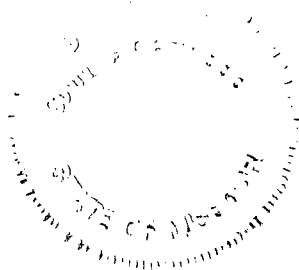
Attachment: Figure 6.0

xc: Reactor Advisory Committee
Reactor Safety Subcommittee
Dr. Jim Coleman, Vice Provost for Research
Mr. Craig Bassett, U.S. NRC
Mr. Al Adams, U.S. NRC

State of Missouri
County of Boone

On this 8th day of June in the year 2007,
before me, the undersigned notary public, personally appeared Leslie Foyto & Ralph Butler, known to me to be the person(s) whose name(s) is/are subscribed to the within instrument and acknowledged that he/she/they executed the same for the purposes therein contained. In witness whereof, I hereunto set my hand and official seal.

Notary Public



TECHNICAL SPECIFICATION
UNIVERSITY OF MISSOURI
RESEARCH REACTOR FACILITY

Number 6.1

Page 2 of 8

Date _____

Amendment No. _____

SUBJECT: Administration (cont'd)

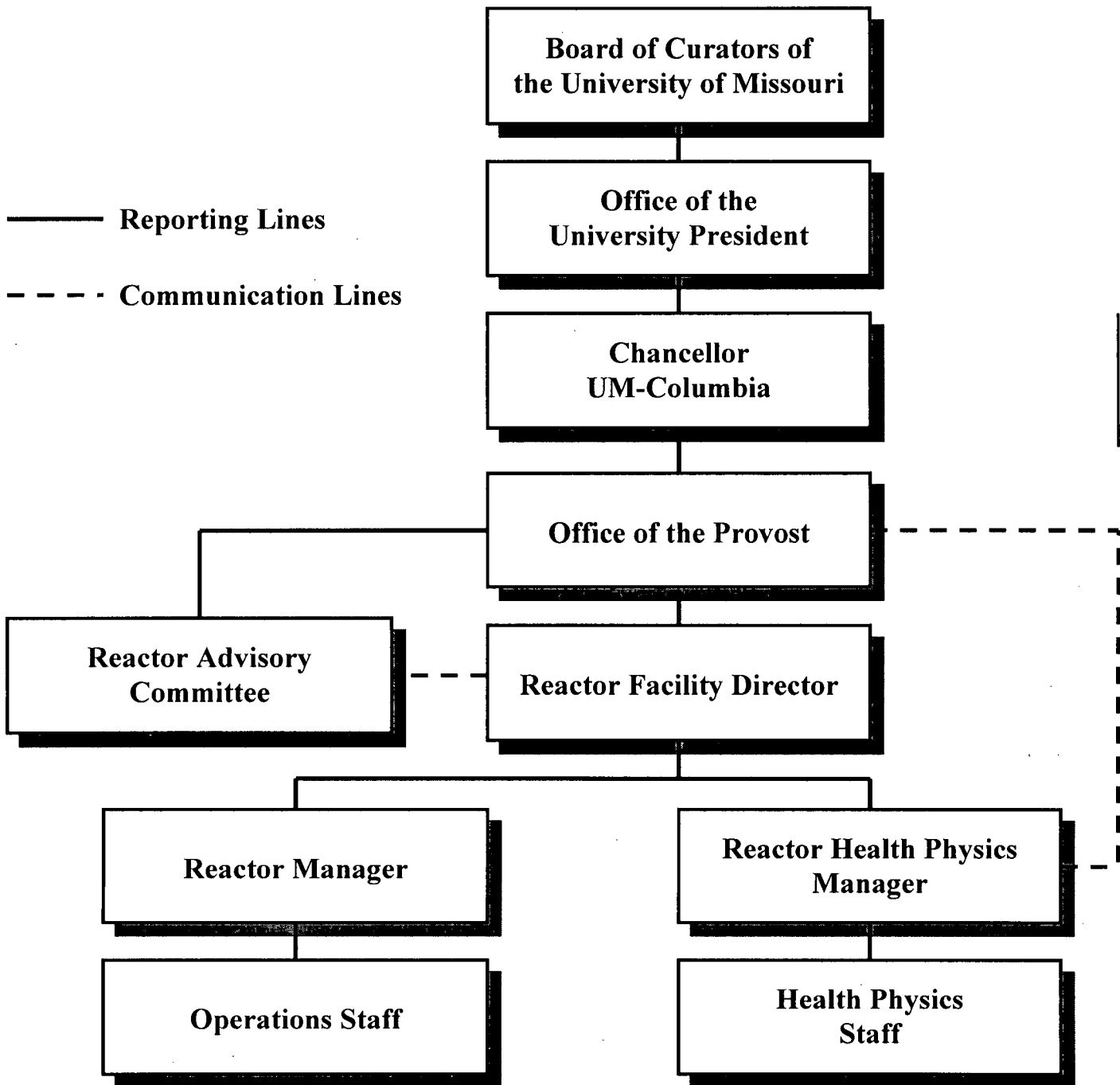


Figure 6.0